

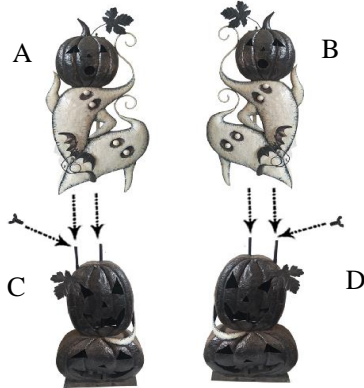
ASSEMBLY INSTRUCTIONS

SPOOKY GHOST & JACK-O-LANTERN CEMETERY ARCH W/LED LIGHTS

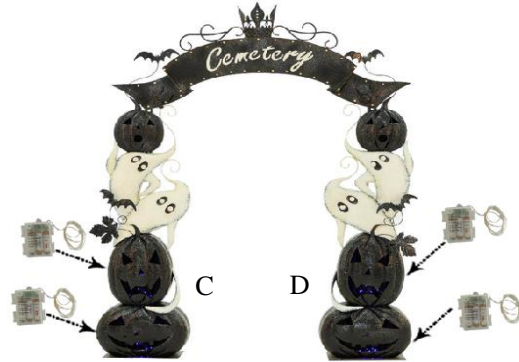
Please read instructions thoroughly before assembling this piece. Familiarize yourself with inventory of parts and the accompanying illustrations to assure safe and proper assembly.

STEPS

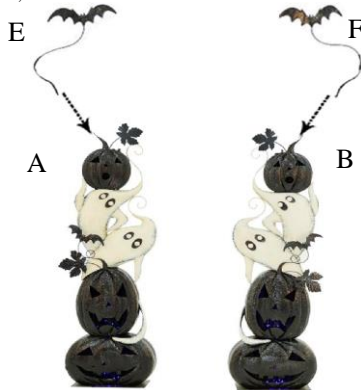
Step 1: Insert A into the tube on C, insert B into the tube on D, lock tight with Screws.



Step 4: Put LED lights into C&D, hang on hook.



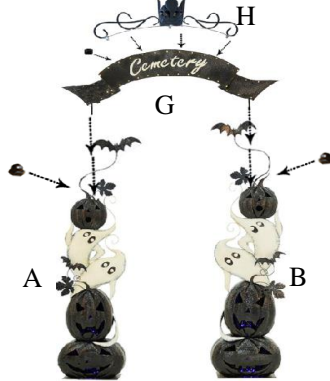
Step 2: Lock E to A, lock F to B.



Congratulations!



Step 3: Lock H to G, lock tight with Nuts. insert G into the tube on A&B, lock tight with Nuts.



IMPORTANT: Check all hardware for tightness before and during use

The assembly requires at least two(2) people and will take approximately 30 minutes to complete

Use and Care:

Safe for both indoor and outdoor use; year round. Clean with damp/dry cloth; use clear protective overspray (ex. Rustoleum) for added protection against potential fading and/or weatherization.

International Warranty

30 day warranty that begins once product is delivered.