

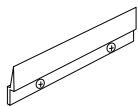
# INSTALLATION MANUAL

## METAL FRAME MIRROR

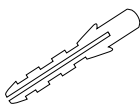
### ABOUT US

Thank you for shopping with us! We hope that our products have added a touch of brightness to your life. If you need any assistance, please don't hesitate to reach out. Our dedicated team is available 24/7 to ensure your satisfaction.

### ACCESSORIES LIST



Bracket



Wall Anchor-A



Wall Anchor-B

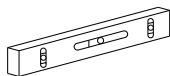


Short Screw



Long Screw

### TOOLS REQUIRED



Level Ruler



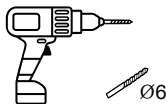
Marker



Hammer



Tape Measure



Electric Drill



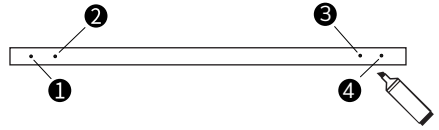
Phillips Screwdriver



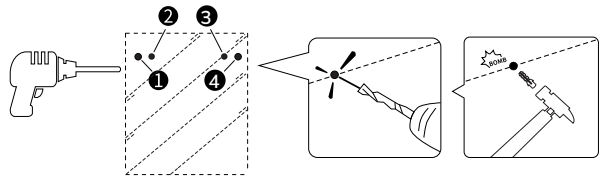
Safety Goggles

# INSTRUCTIONS

1. Confirm the locations of four drill holes with the positioning ruler provided, and mark them on the wall.



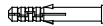
2. Use an electric drill to punch holes at the marked spots, and then apply wall anchors with a hammer.



## Thickness of Wall

## Recommended Drill Bit

> 16mm



1/4" (6mm) drill bit, drilling depth in 1 31/32" (50mm)

8 ~ 16mm



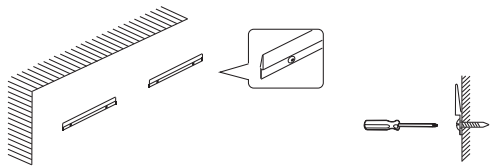
25/64" (10mm) drill bit

< 8mm

Unapplicable

Note: Please wear goggles and pay attention to safety.

3. Screw the two brackets to the wall.



4. Place the mirror against the wall, align the hook with the mounted bracket, slowly lower the mirror down, and make sure that it slots into the right position and hangs securely.

