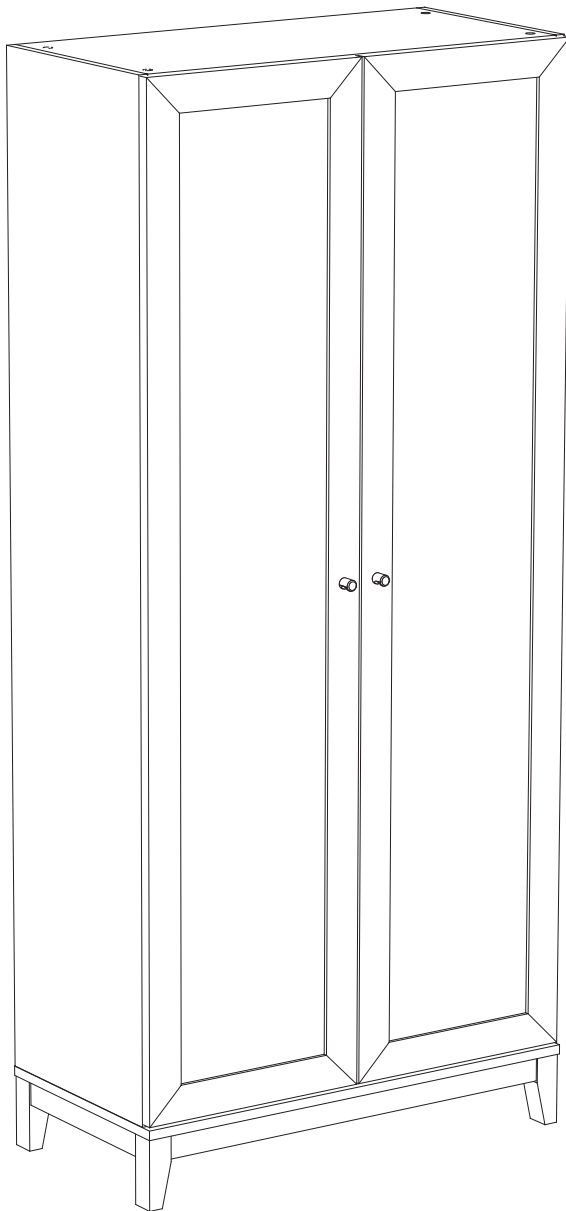


32" Cabinet with legs

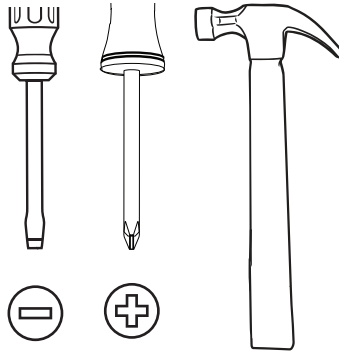
Armoire 32" avec pattes

Gabinete de 32" con patas



Tools

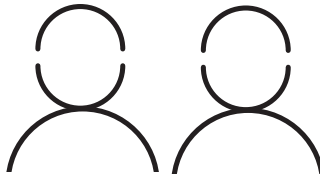
Vous aurez besoin / Necesitarás



2 person recommended

2 personnes recommandées /

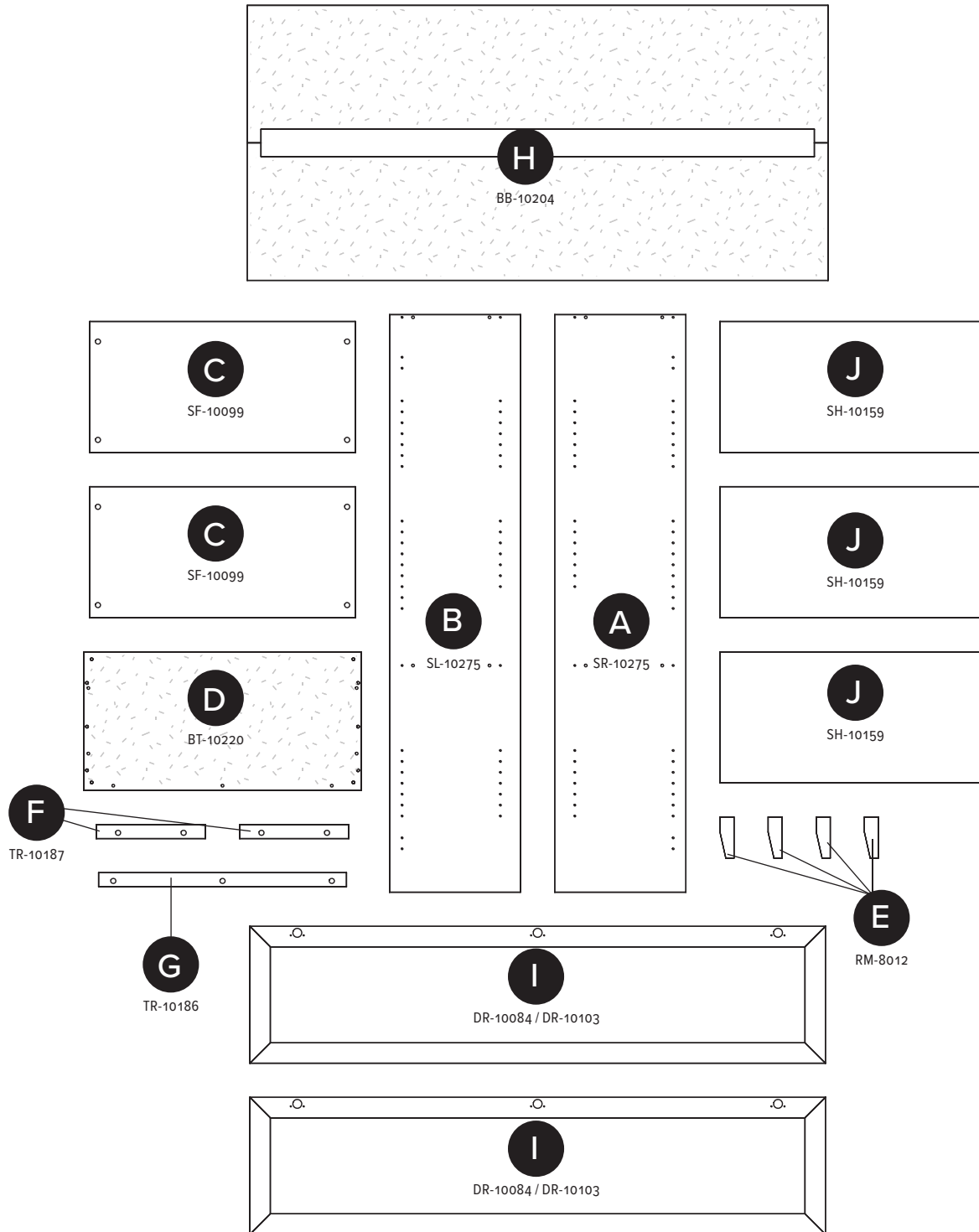
2 personas recomendadas

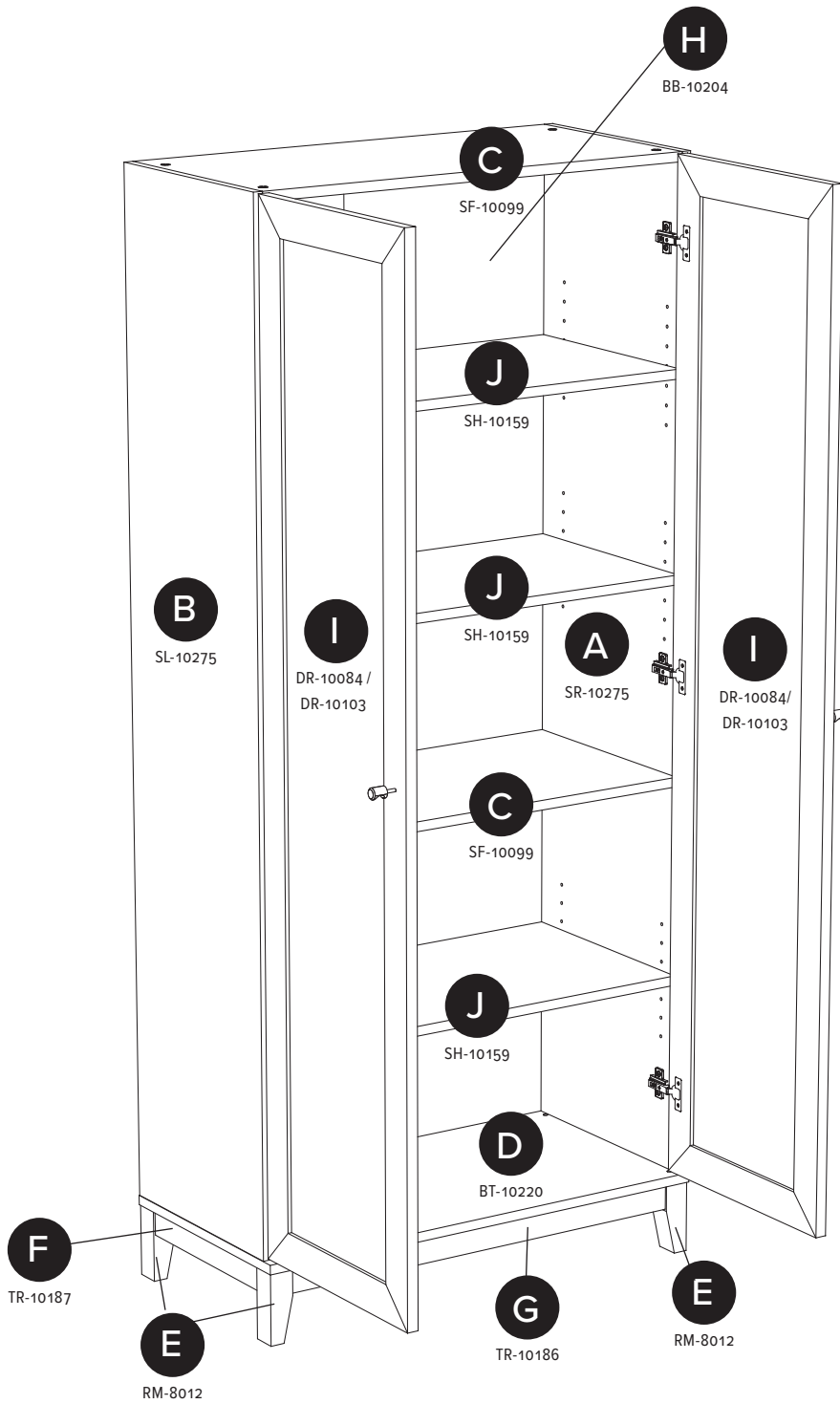


Parts

Pièces

Piezas





Hardware

Quincaillerie Piezas de Conexión

15 X



RM-0103

30 X



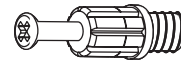
RM-0022

10 X



RM-0001

8 X



RM-0501
GREEN

12 X



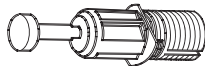
RM-0010-COLOR

8 X



RM-0069

7 X



RM-0583
BLUE

4 X



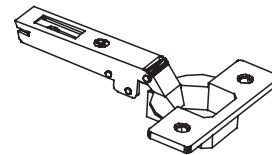
RM-0008-COLOR

8 X



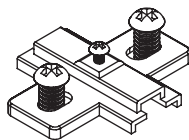
RM-0802 COLOR

6 X



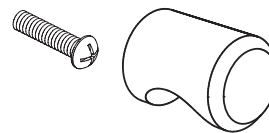
RM-0125

6 X



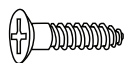
RM-0027

2 X



RM-0917-22B

12 X



RM-0004

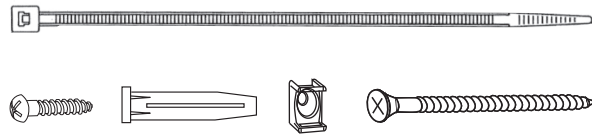
1X

Tipover Restraint Kit

Kit anti-basculement

Kit de sujeción contra
volcaduras

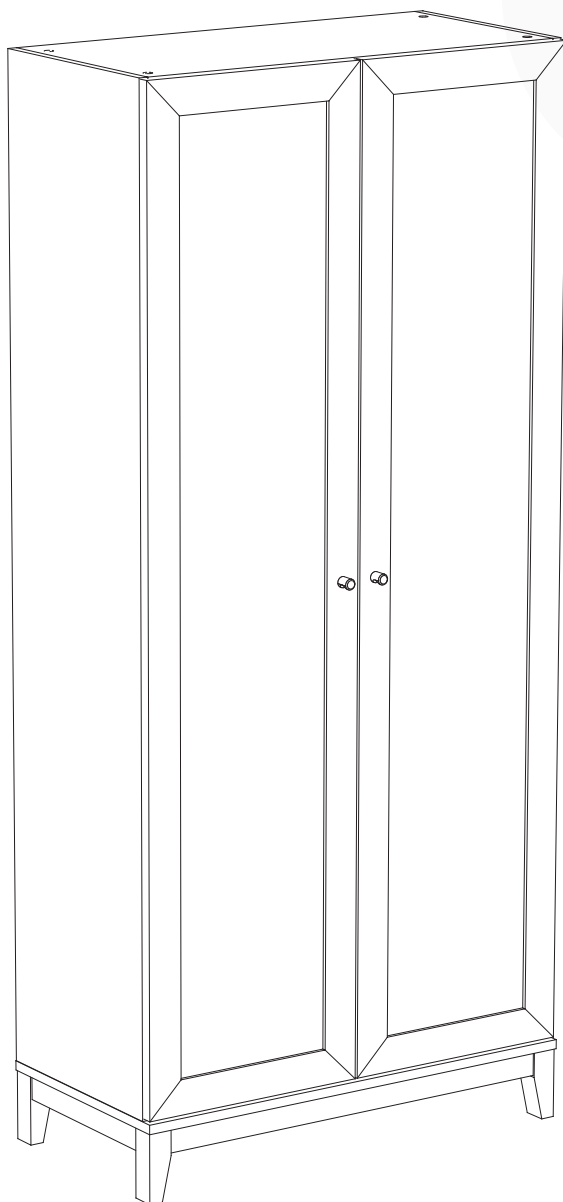
HP-1088



Assemble in 13 steps

Assemblage en 13 étapes

Montar en 13 pasos

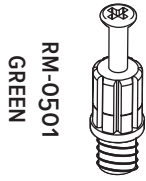


**Let's
start!**

Commençons!

¡Comencemos!

1



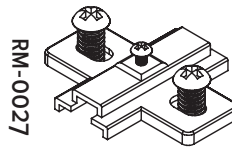
RM-0501
GREEN

8X



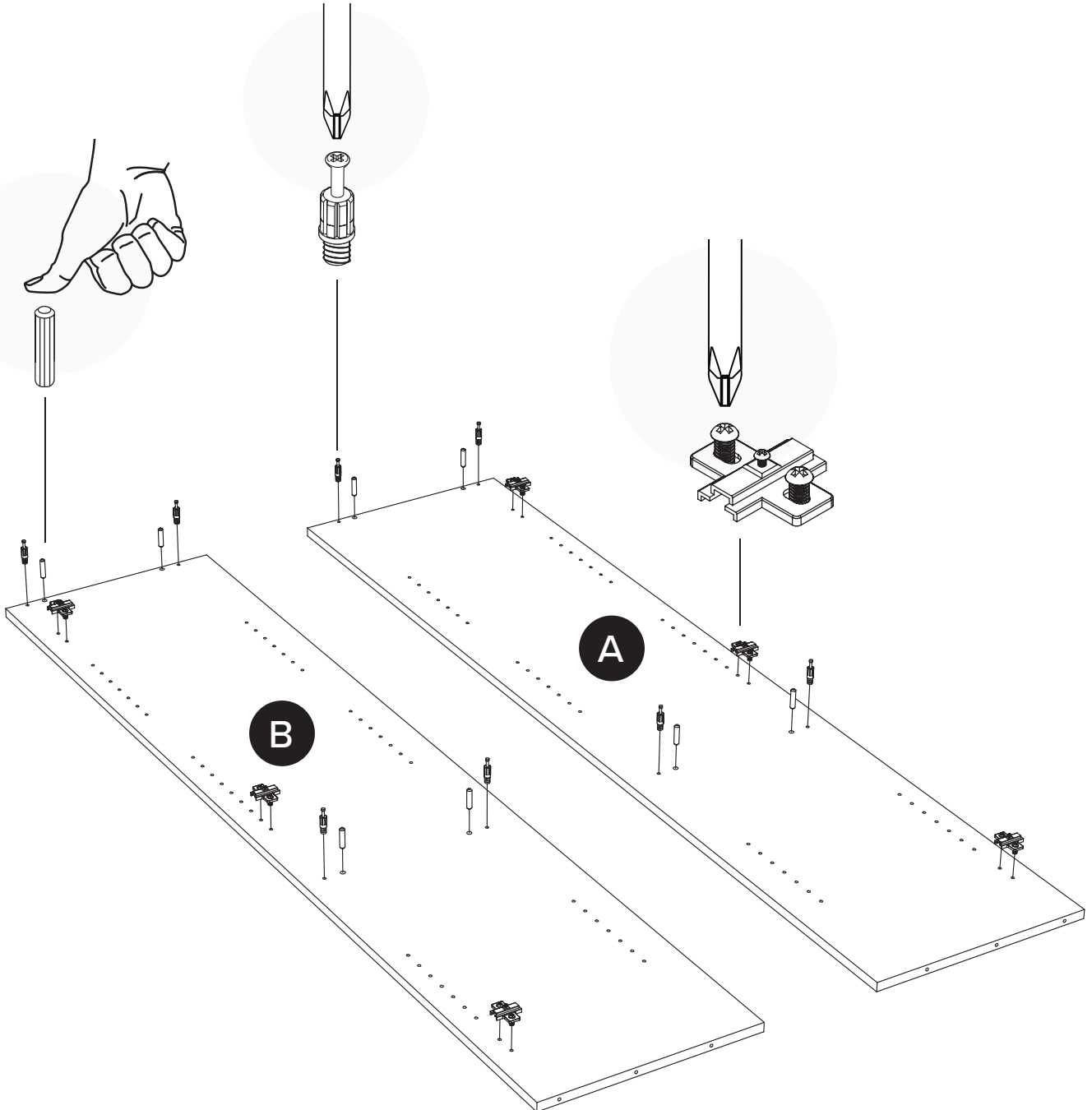
RM-0069

8X



RM-0027

6X



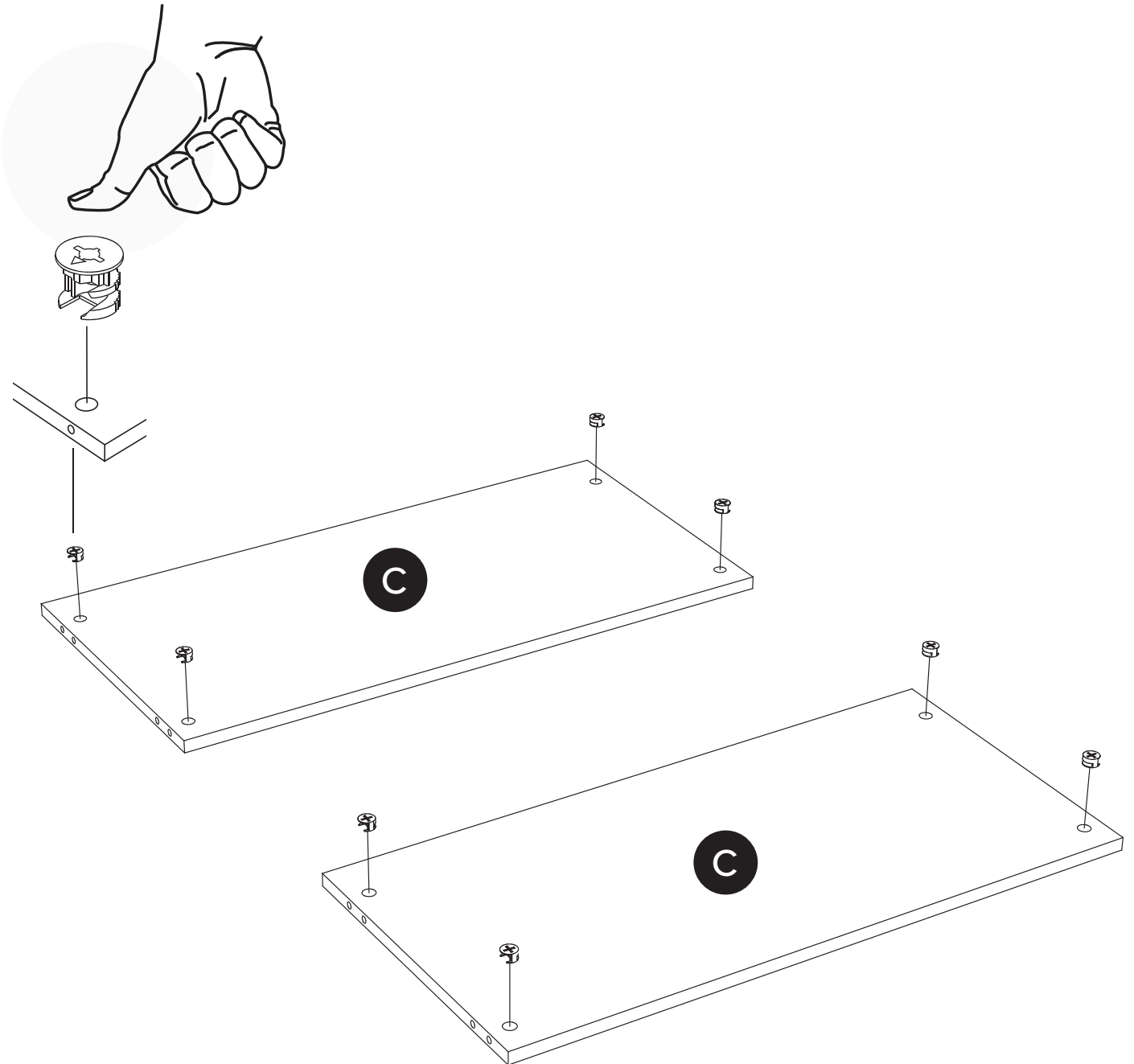
2



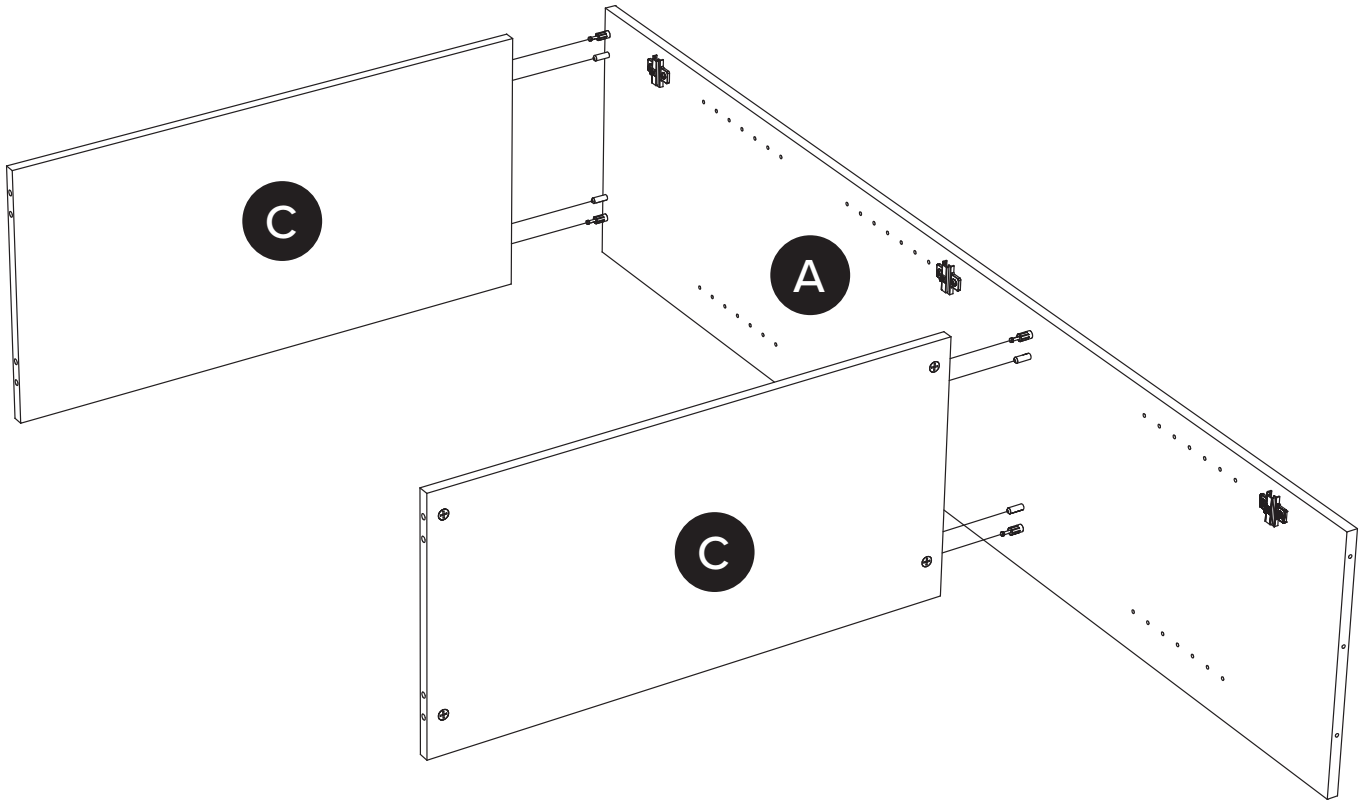
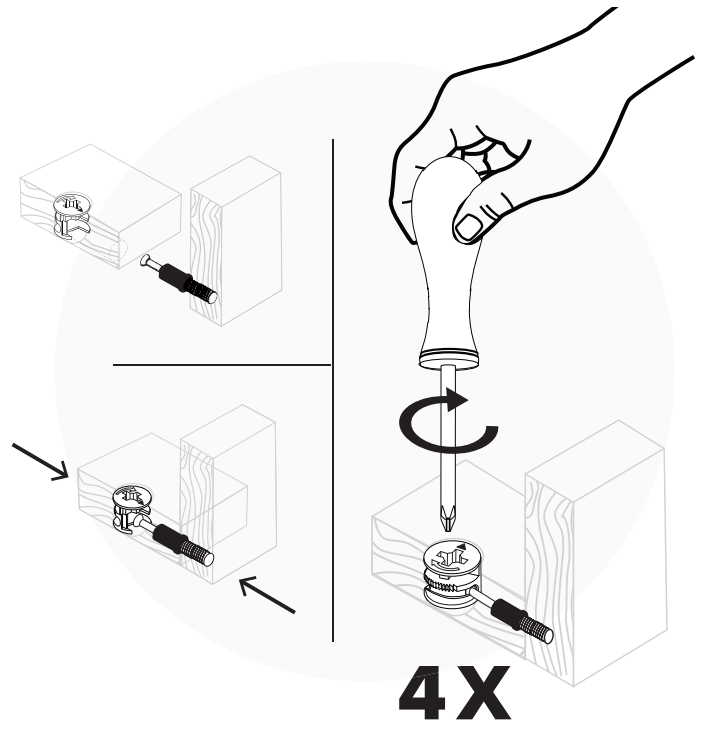
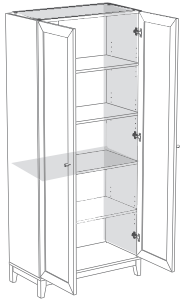
RM-0103



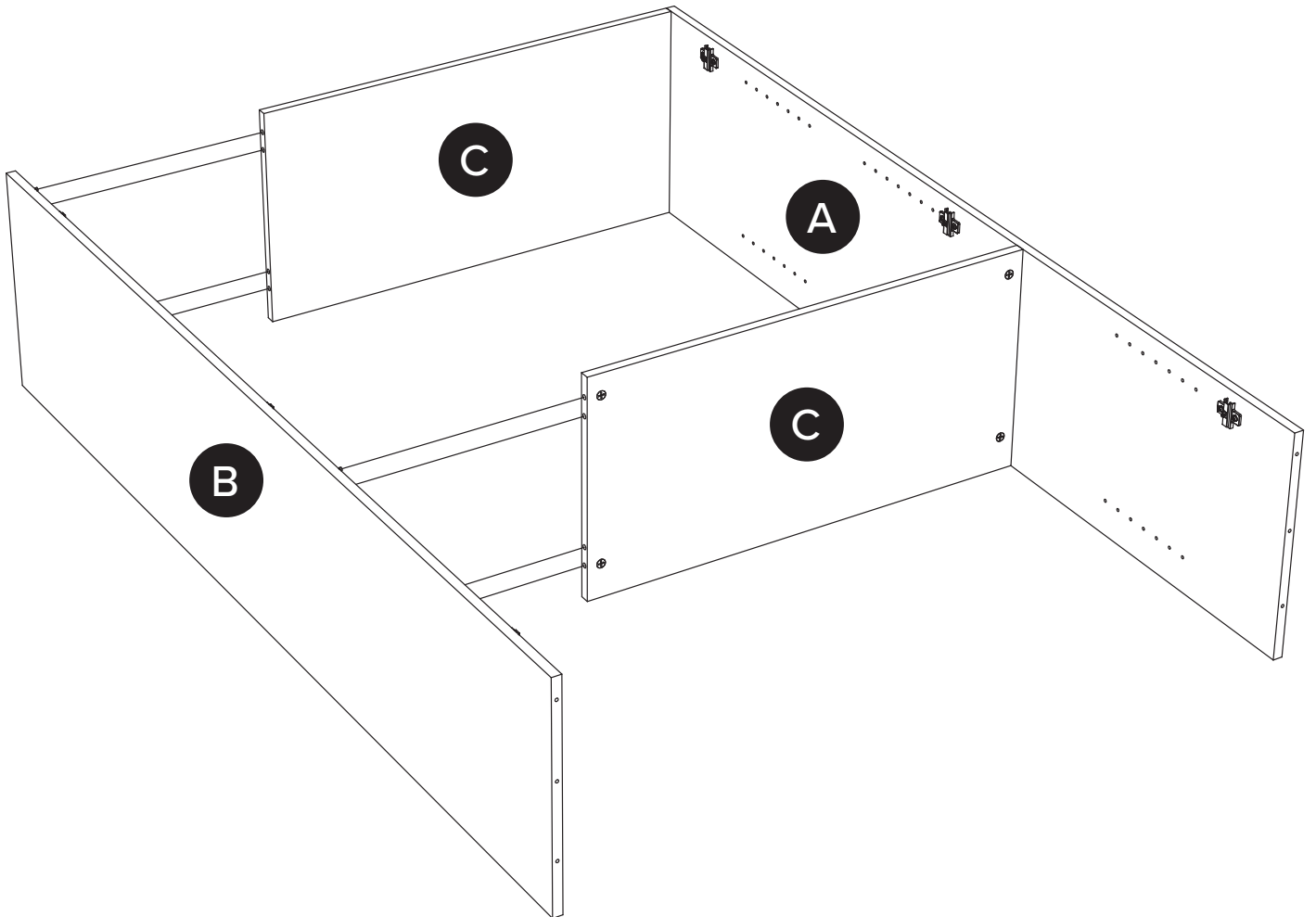
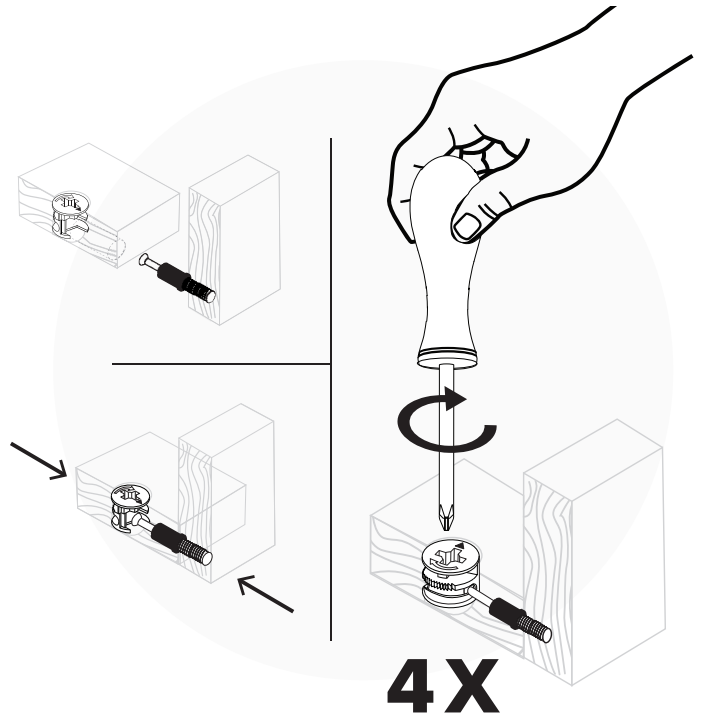
8X



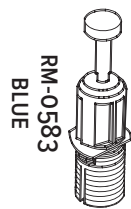
3



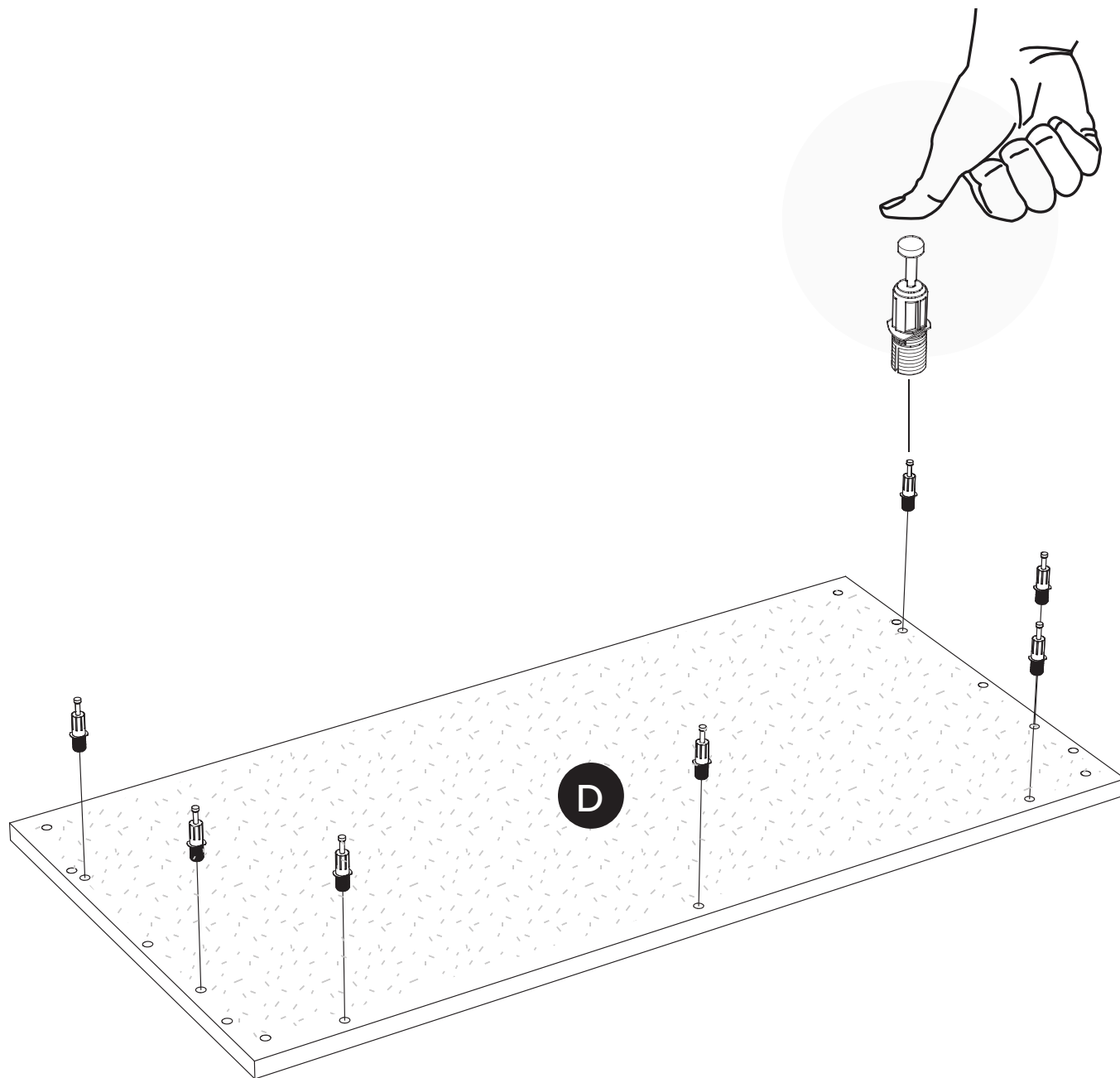
4



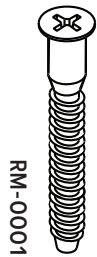
5



7X

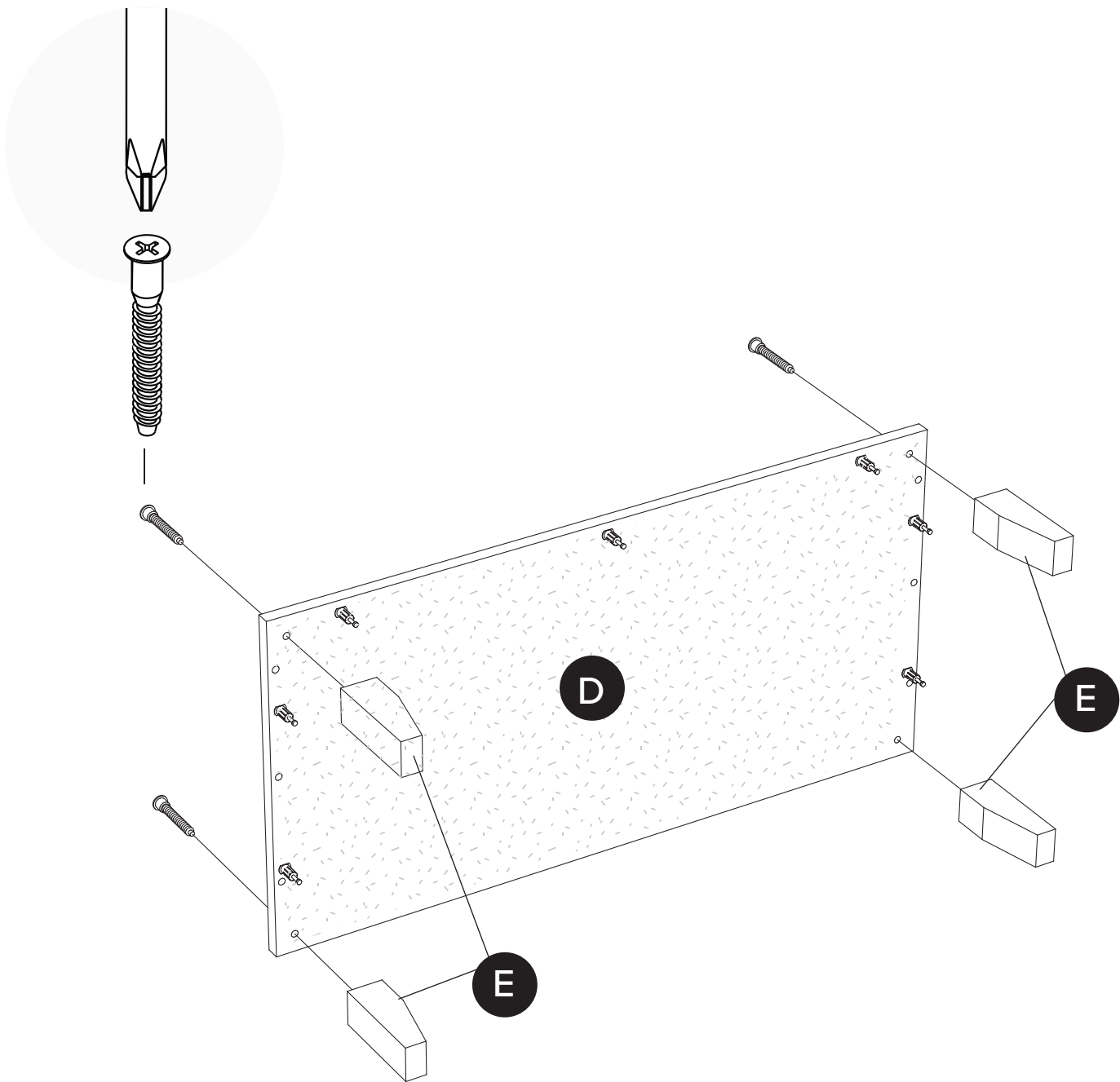


6

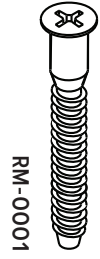


RM-0001

4X

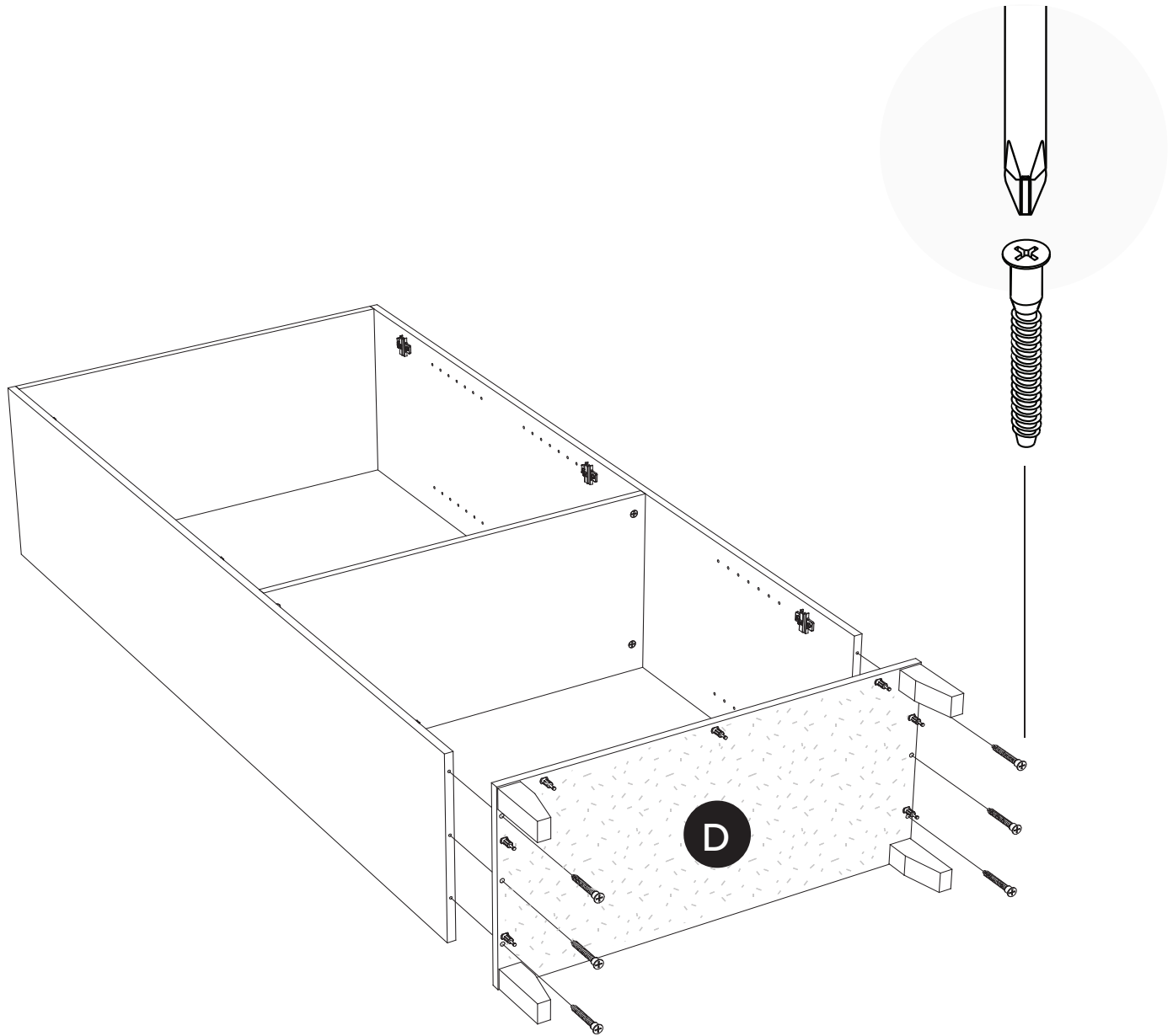


7



RM-0001

6X



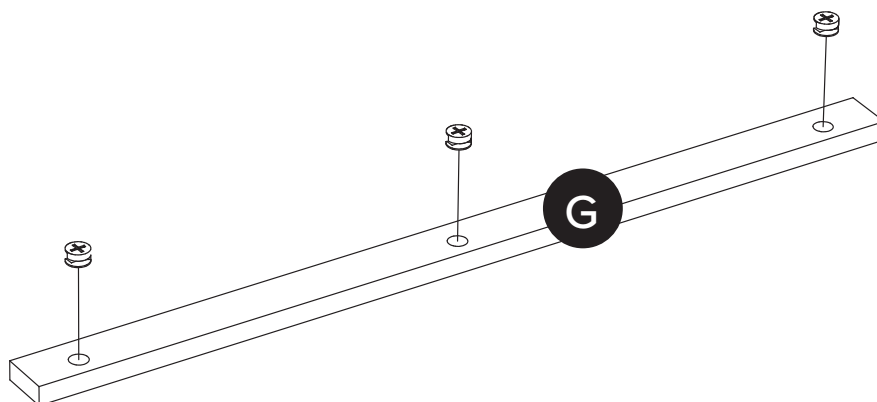
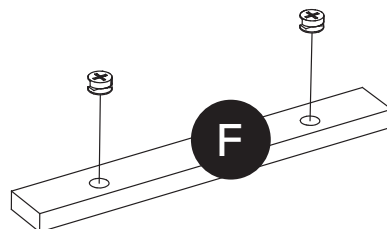
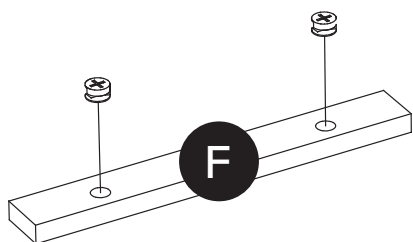
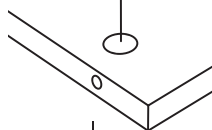
8



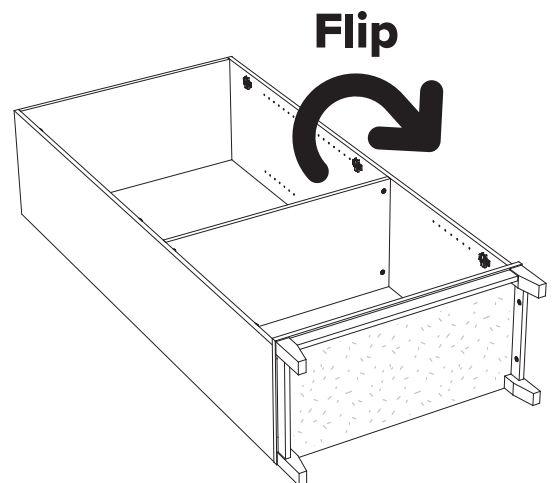
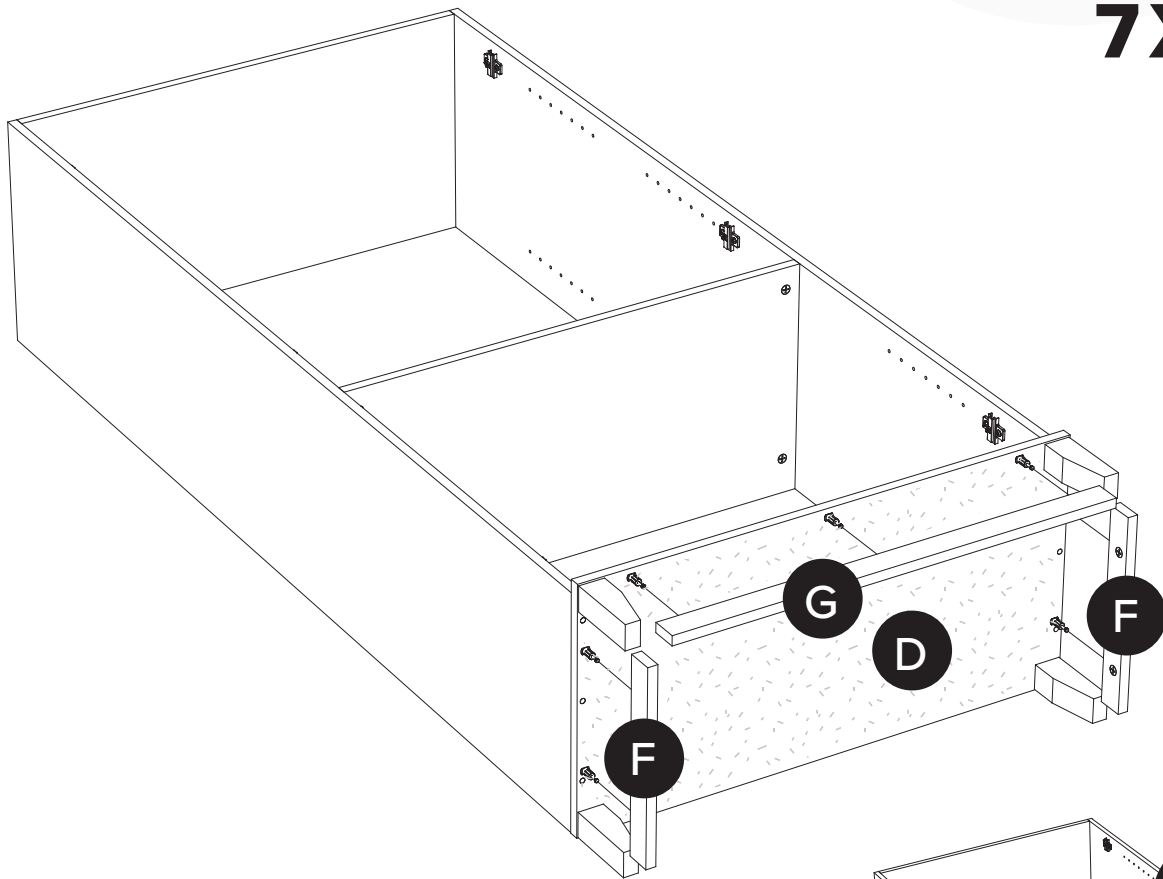
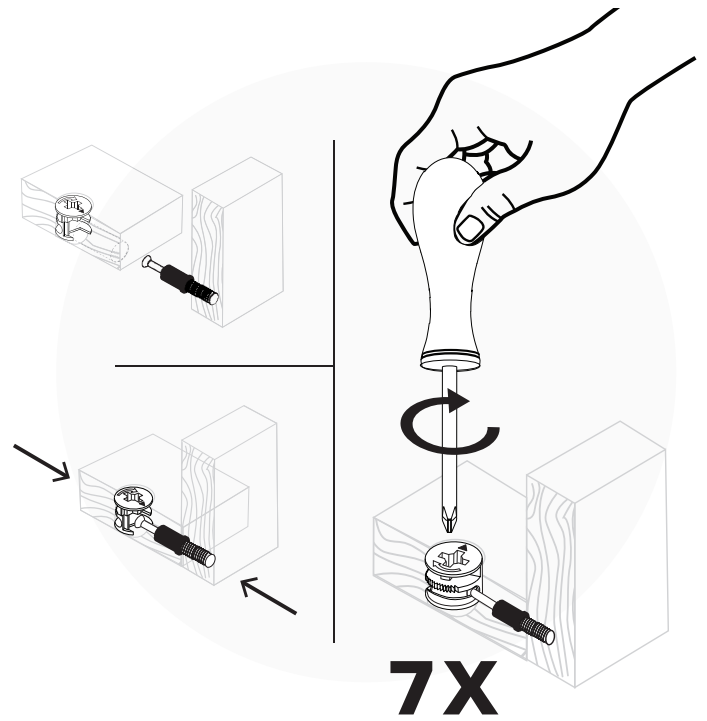
RM-0103



7X



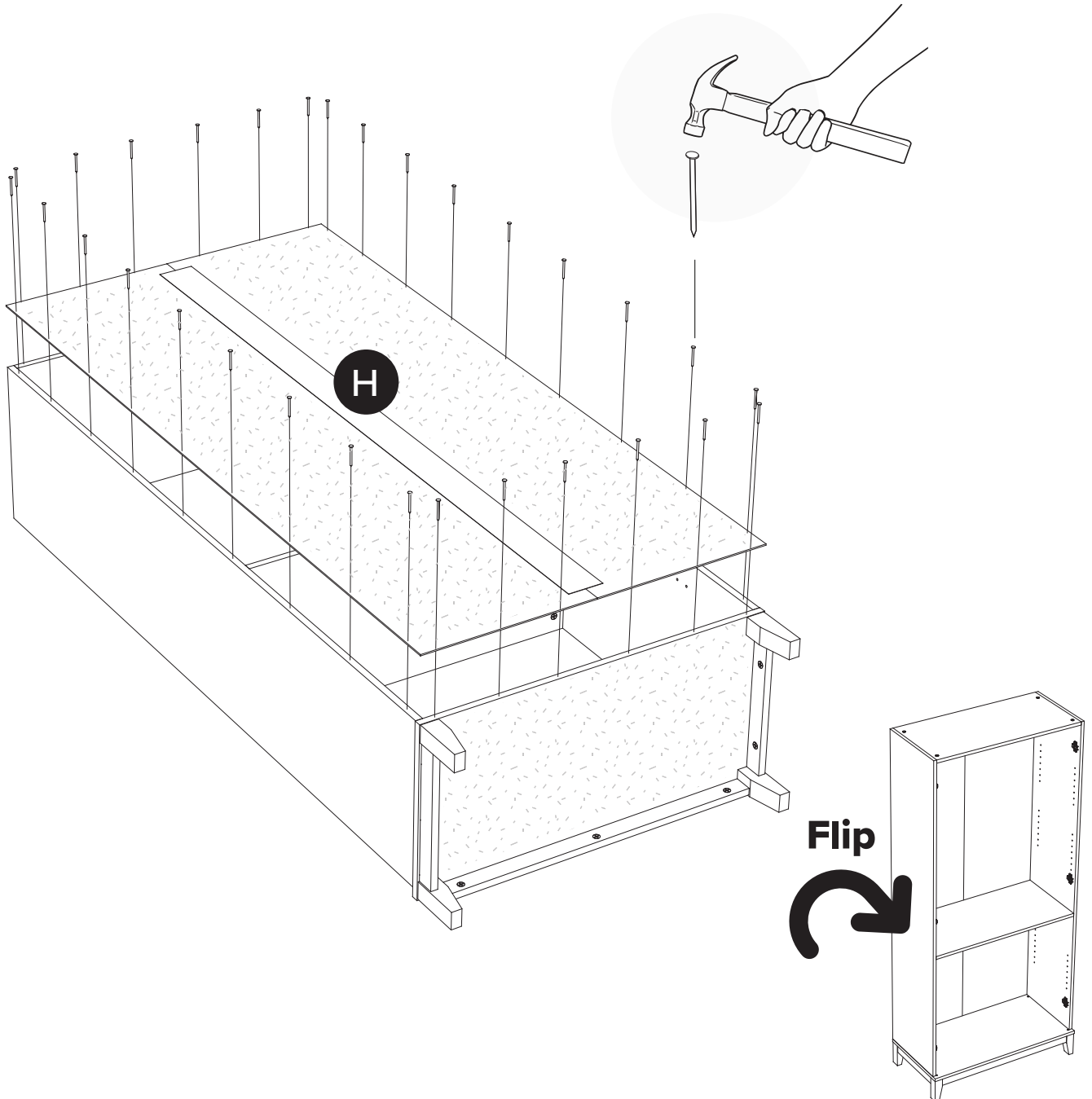
9



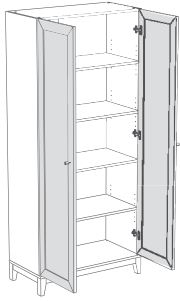
10



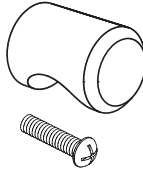
30 X



11

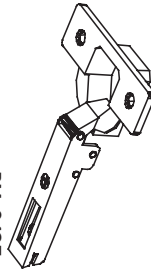


RM-0917-22B



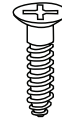
2X

RM-0125

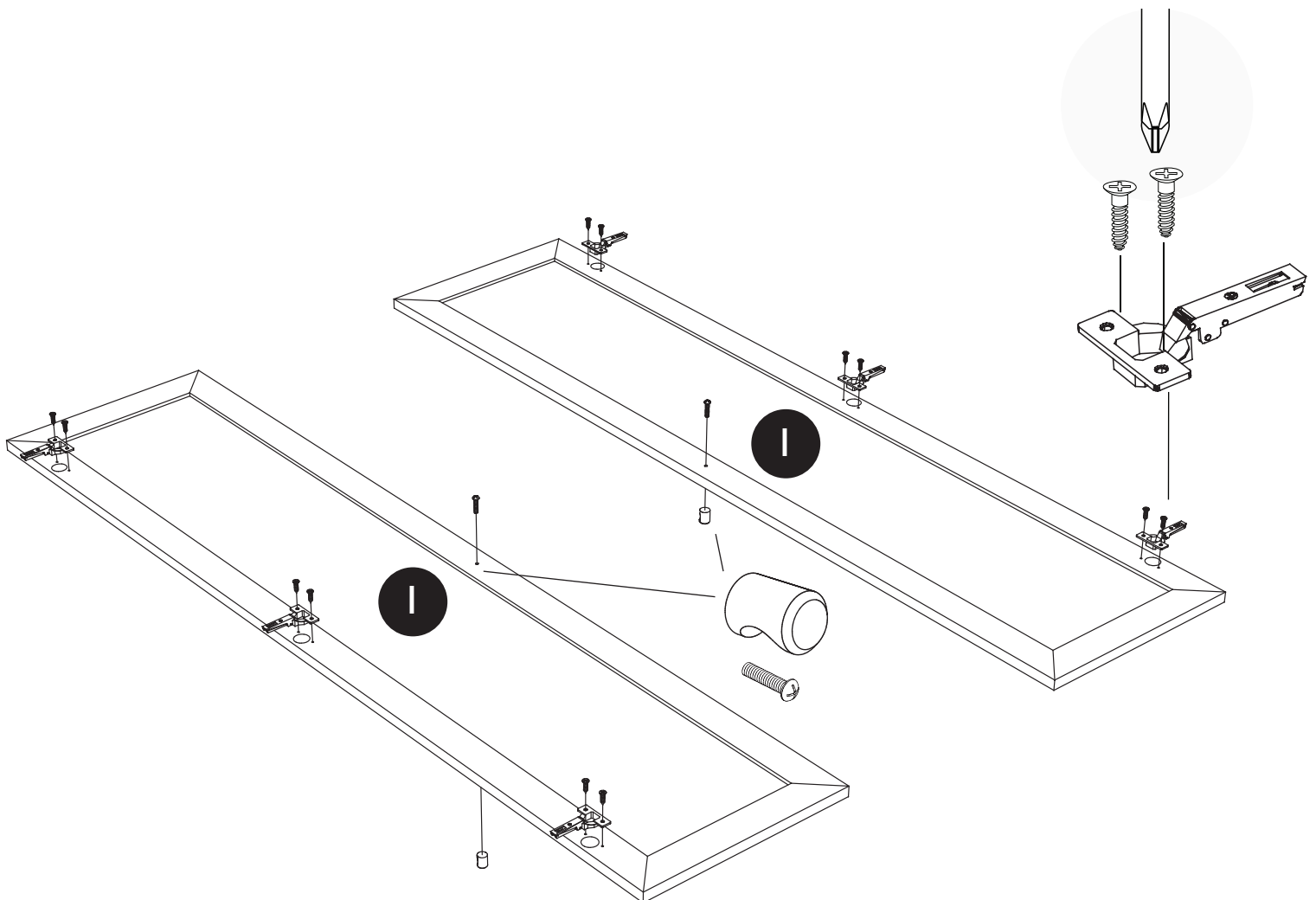


6X

RM-0004



12X



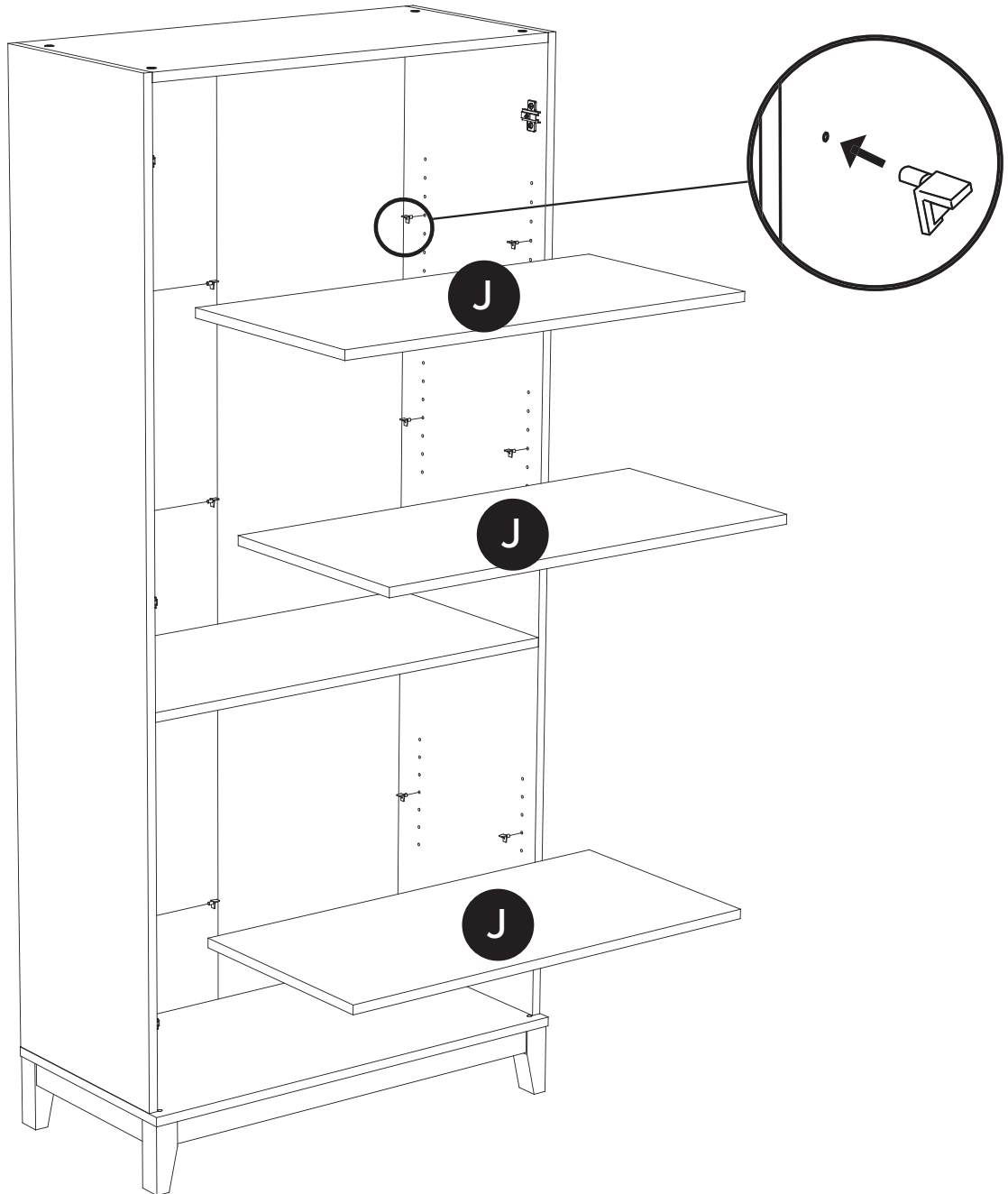
12



RM-0010-COLOR



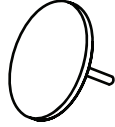
12X



13



RM-0802 COLOR

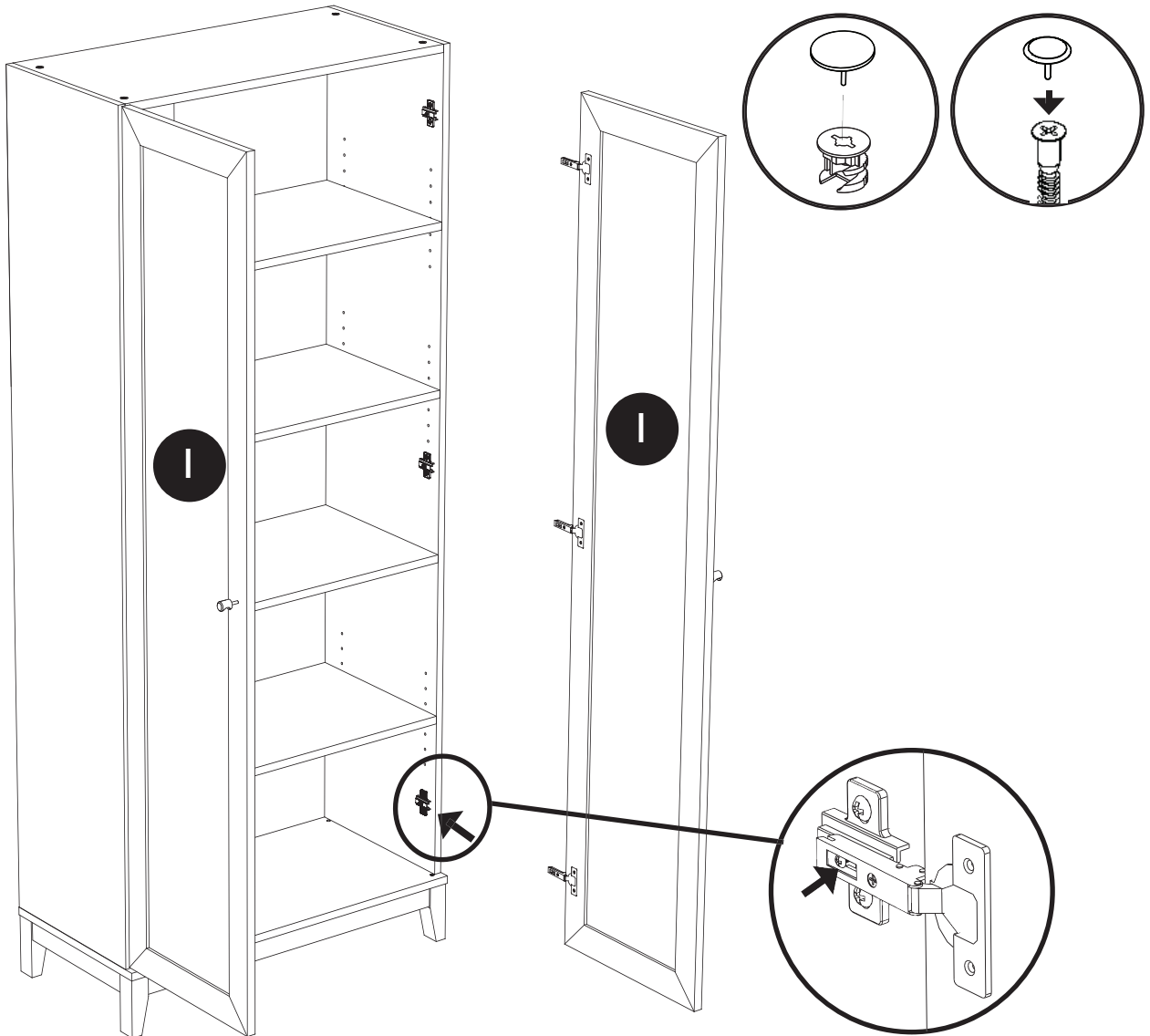


8X

RM-0008-COLOR



4X



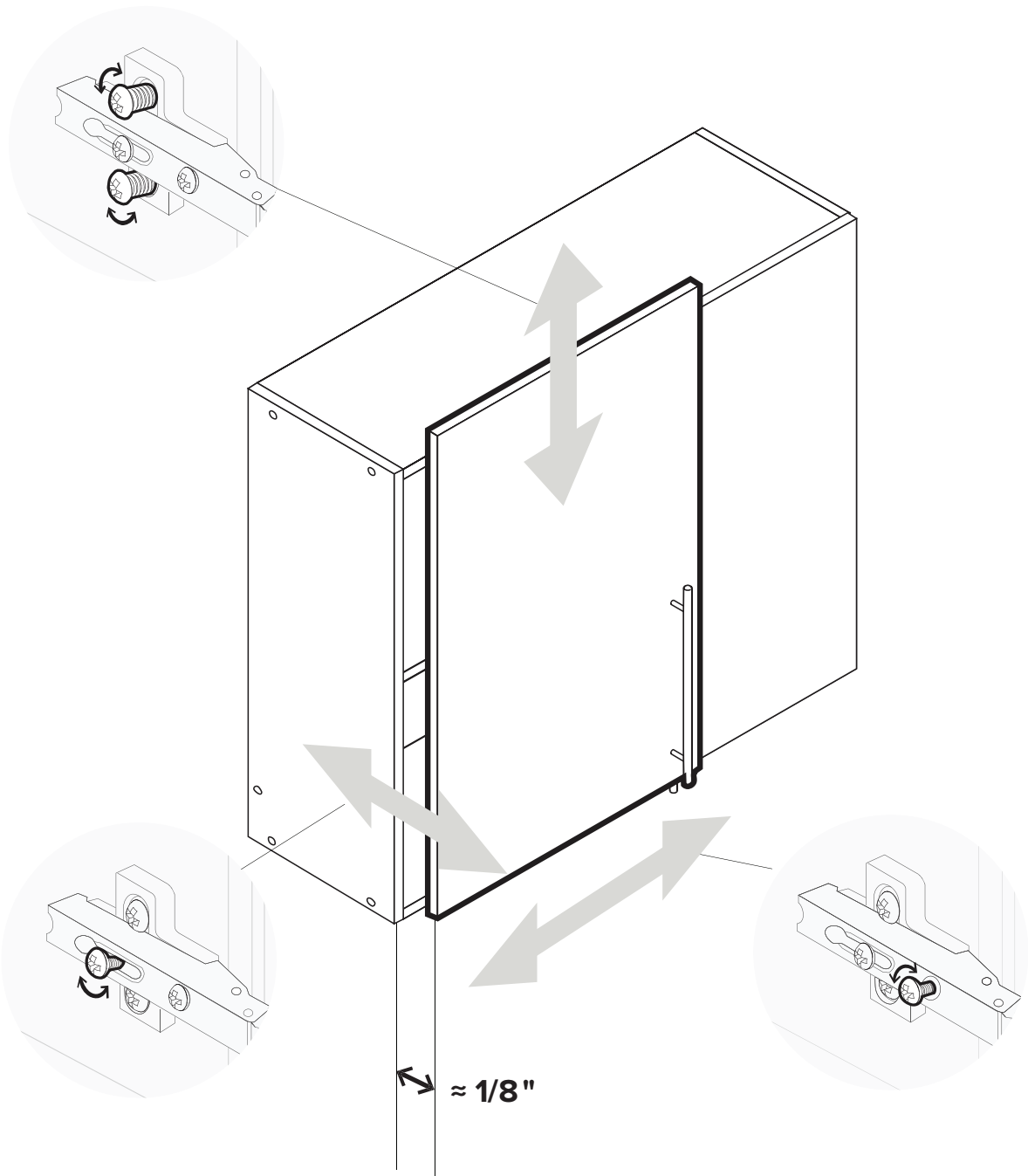
Slide the hinges over the hinge plates on the cabinet and tighten the locking screw in the center of each plate. These hinges are 6 way adjustable. **See instructions on page 22.**

Glisser les plaques de charnière sur les plaques et serrer la vis de verrouillage au centre de chaque plaque. Ces charnières sont réglables de 6 façons différentes. **Voir les directives à la page 22.**

Deslice las bisagras sobre las placas de bisagra del gabinete y apriete el tornillo de bloqueo en el centro de cada placa. Estas bisagras son ajustables en 6 direcciones. **Ver instrucciones en la página 22.**

Hinge Adjustment

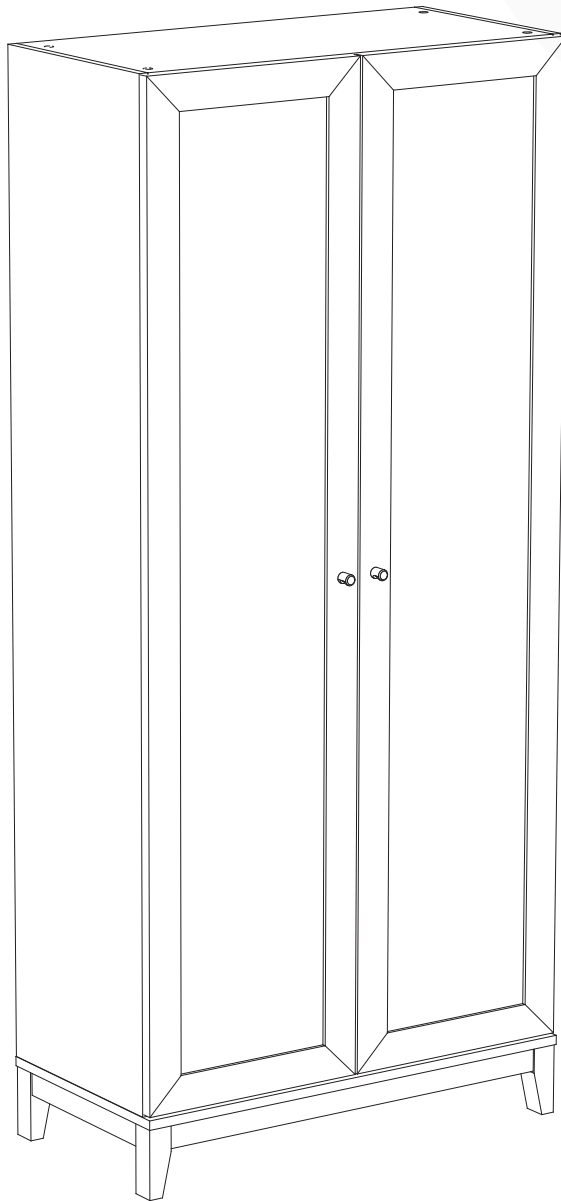
Ajustement de la charnière
Ajuste de bisagra



All done!
Good job!

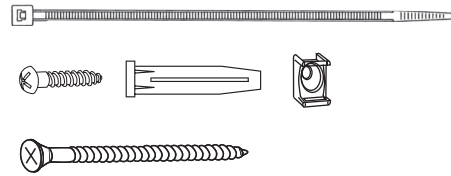
Tout est fait! Bon travail!

¡Todo listo! ¡Buen trabajo!



Tipover Restraint Device

Fixation du dispositif de retenue
Instalando la correa de seguridad



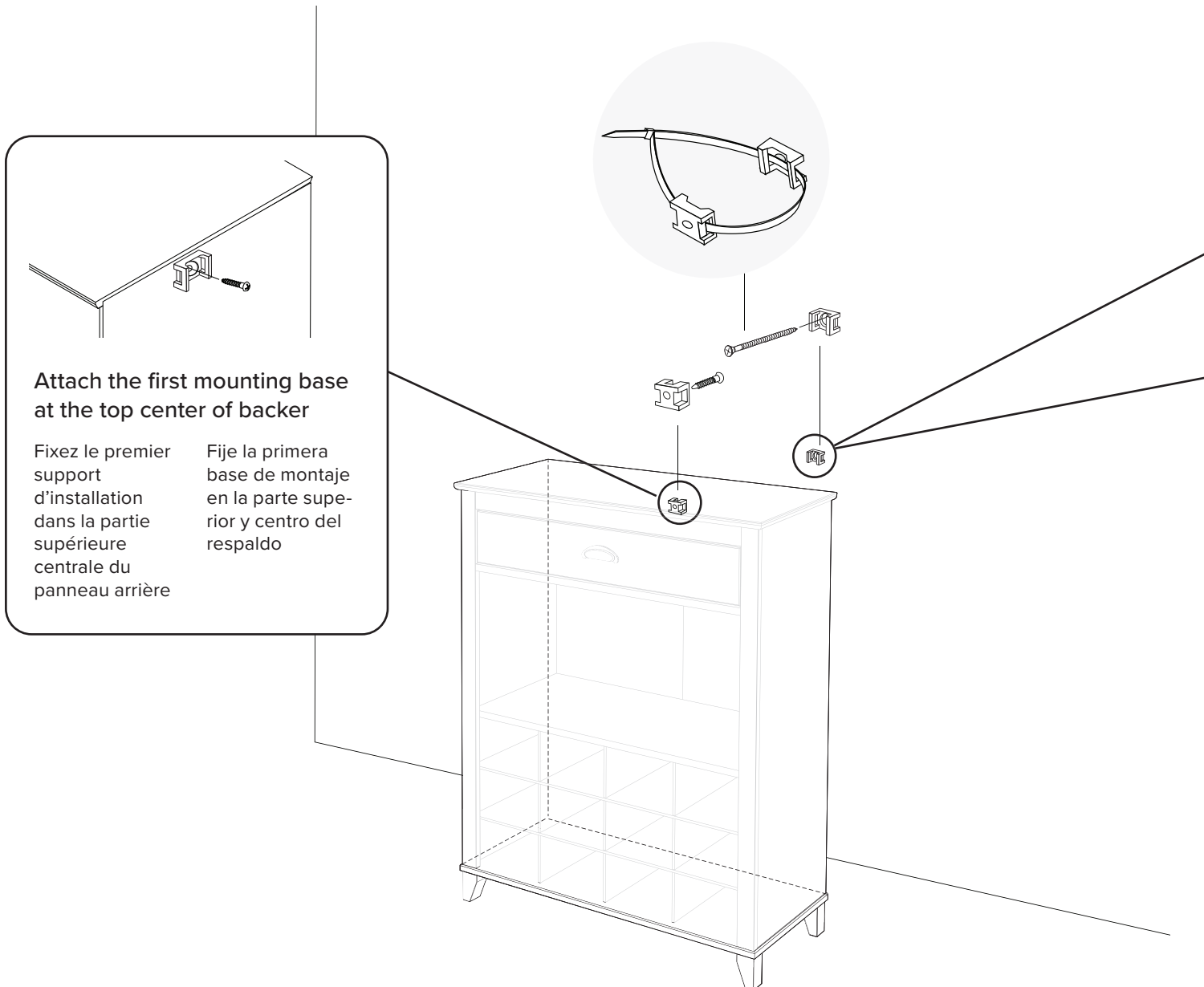
HP-1088

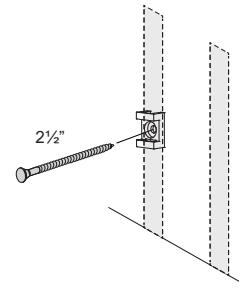
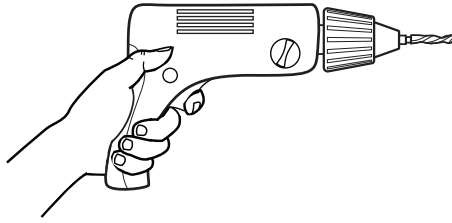
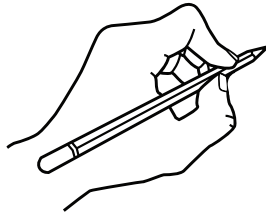
Safety Notice

We recommends anchoring furniture in homes where children live or visit and has included an easy to install safety device. Please make sure that it is installed according to the following instructions.

Noticia de seguridad We recomienda anclar muebles en hogares donde viven niños o ellos visitan. ha incluido un dispositivo de seguridad de facil instalacion. Por favor segurese de que esta instalado de acuerdo a las siguientes instrucciones.

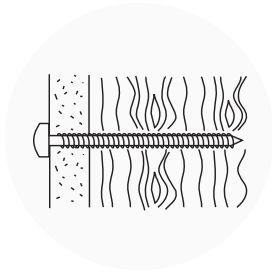
Avis de sécurité We recommande l'ancrage des meubles dans les domiciles où habitent ou visitent des enfants, d'où l'inclusion d'un dispositif de sécurité facile à installer. Veuillez vous assurer que ce dernier est installé conformément aux présentes instructions.





For walls constructed of wood with drywall

Pour les murs en cloison sèche avec montants en bois
Para paredes construidas de madera con paneles prefabricados



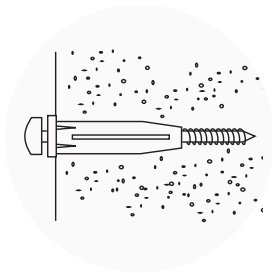
1. With a pencil mark location of second mounting base position
2. Drill pilot hole using an 1/8 inch drill bit 2 inches deep
3. Attach mounting base to wall using the 2 1/2 inch screw provided

1. À l'aide d'un crayon, marquez l'emplacement du deuxième support
2. Percez un avant-trou de 2 po de profondeur avec une mèche de 1/8 po
3. Vissez le support dans le mur à l'aide des vis de 2 1/2 po fournies

1. Con un lápiz marcar la ubicación de la segunda base de montaje
2. Perforar el agujero usando una broca de 1/8 pulgadas 2 pulgadas de profundidad
3. Montar el soporte a la pared utilizando los 2 tornillos de 2 1/2 pulgadas proporcionados

For walls constructed of drywall (unable to hit a stud)

Pour les murs en cloison sèche (où il est impossible de visser dans un montant en bois)
Para muros construidos de drywall (Sin travesaño)



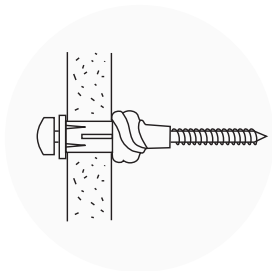
1. Drill pilot hole using a 5/16 inch drill bit only to the depth of drywall thickness
2. Using a rubber mallet or hammer insert wall anchor into drywall
3. Attach holder to wall anchor using 2 1/2 inch screw provided

1. Percez un avant-trou à l'aide d'une mèche de 5/16 po sans dépasser la profondeur de la cloison sèche
2. À l'aide d'un maillet en caoutchouc ou d'un marteau, insérez l'ancrage mural dans la cloison sèche
3. Vissez le support dans l'ancrage mural à l'aide des vis de 2 1/2 po fournies

1. Perforar el agujero utilizando una broca de 5/16 pulgadas solo a la profundidad del grosor del panel de yeso
2. Utilizando un martillo de goma o un martillo insertar el anclaje en pared de yeso
3. Fije el soporte de anclaje a la pared utilizando el tornillo de 2 1/2 pulgadas incluido

For walls constructed of concrete

Pour les murs en béton
Para muros construidos de hormigón



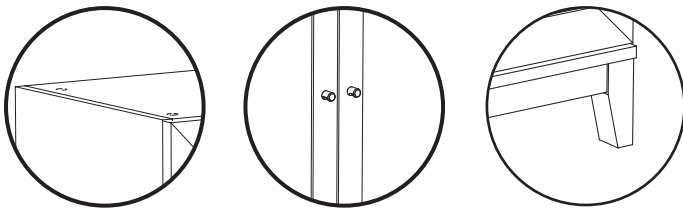
1. Drill pilot hole using a 5/16 inch drill bit 2 3/4 inches deep
2. Using a rubber mallet or hammer insert wall anchor into predrilled hole
3. Attach holder to wall anchor using 2 1/2 inch screw provided

1. Percez un avant-trou de 2 3/4 po de profondeur avec une mèche de 5/16 po
2. À l'aide d'un maillet en caoutchouc ou d'un marteau, insérez l'ancrage mural dans le trou
3. Vissez le support dans l'ancrage mural à l'aide des vis de 2 1/2 po fournies

1. Perforar un agujero de 2 3/4 de profundidad utilizando una broca de 5/16 pulgadas
2. Utilizando un martillo de goma o un martillo insertar el anclaje en el agujero preperforado
3. Fije el soporte de anclaje a la pared utilizando el tornillo de 2 1/2 pulgadas incluido

The is a designer and furniture manufacturer based in Canada and the United States. We bring simplicity, style, and function into your home.

32" Cabinet with legs



Armoire 32" avec pattes
Gabinete de 32" con patas

