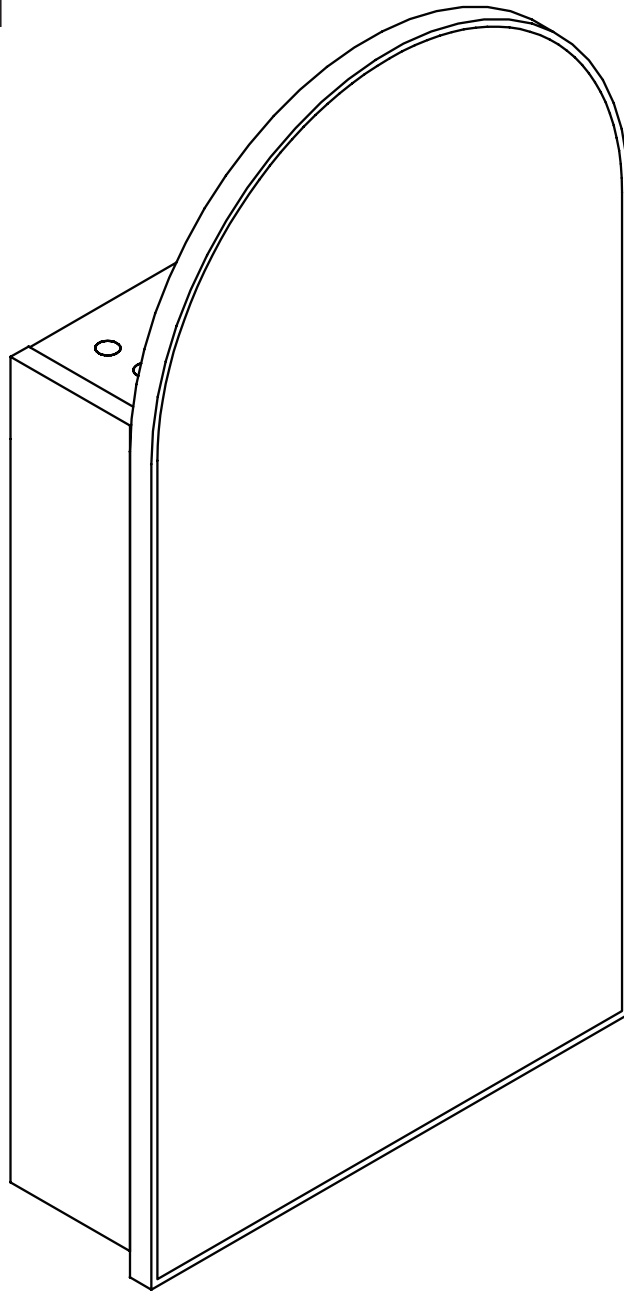


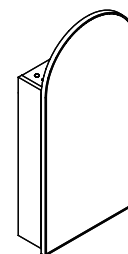
# Mirror Cabinet

## Instruction

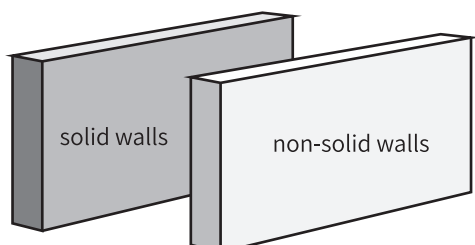


# INSTRUCTION

## TIPS & HARDWARE

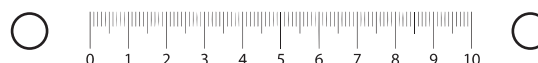


# 1



There are two types of mounting, solid walls using the wall hanging method on **page 8**, and non-solid walls (e.g. sheetrock walls) using the wall mounting method on **page 10**.

# 2

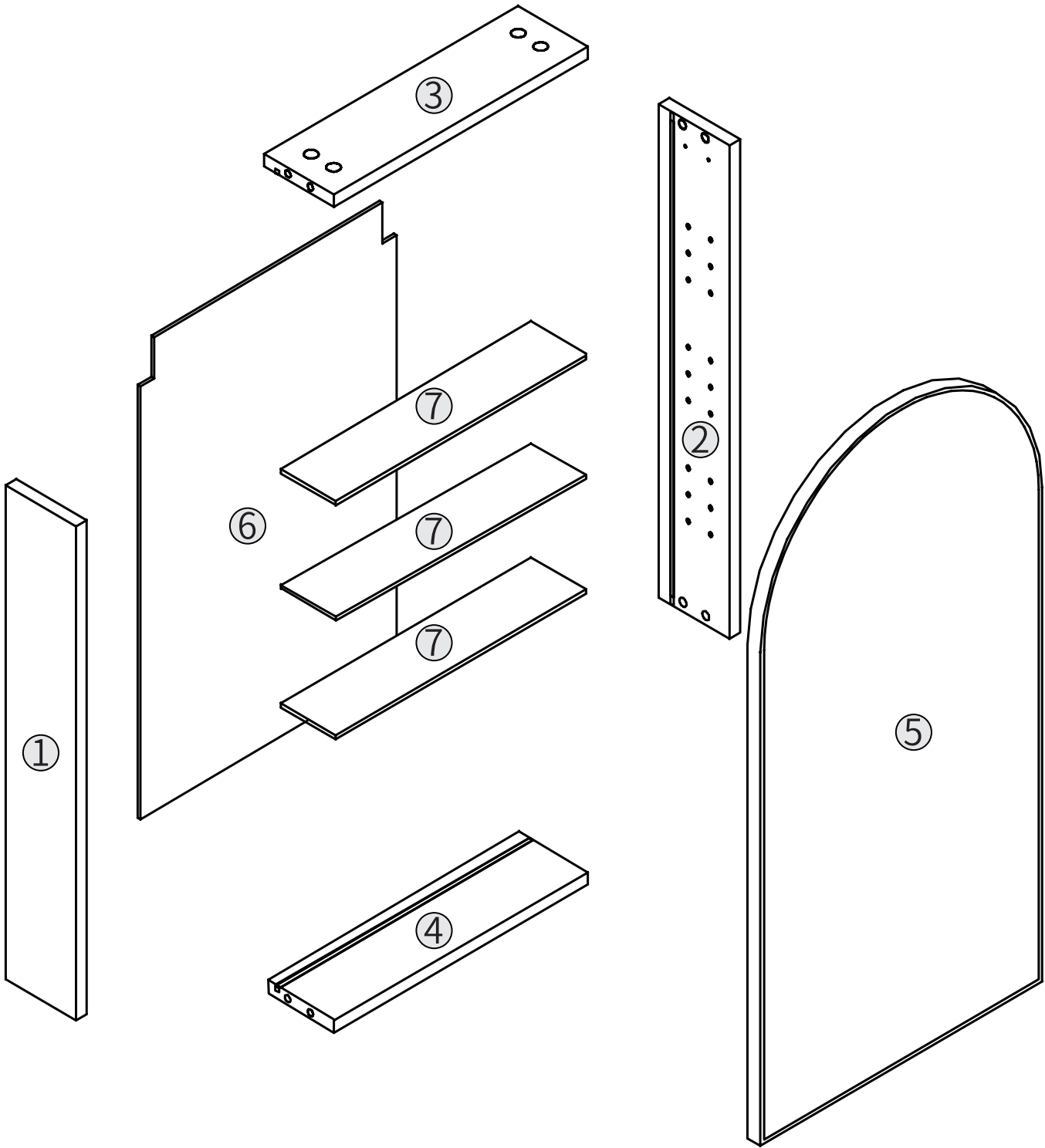
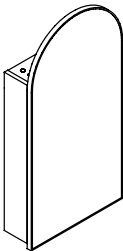


Before drilling the holes, please assemble the product and make sure the distance between the holes is well located.

<b>A</b>  8 PCS	<b>B</b>  8 PCS	<b>C</b>  2 PCS	<b>D</b>  4 PCS	<b>E</b>  2 PCS
<b>F</b>  2 PCS	<b>G</b>  2 PCS	<b>H</b>  12 PCS	<b>I</b>  4 PCS	<b>J</b>  4 PCS
<b>K</b>  12 PCS	<b>L</b>  4 PCS	<b>M</b>  8 PCS		

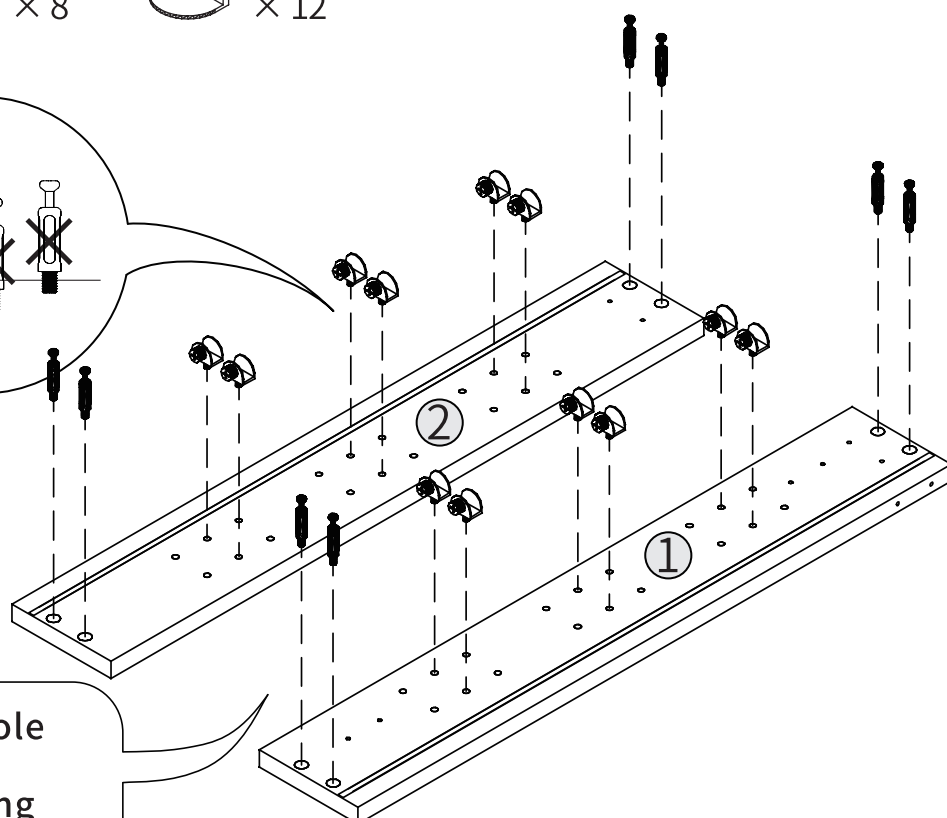
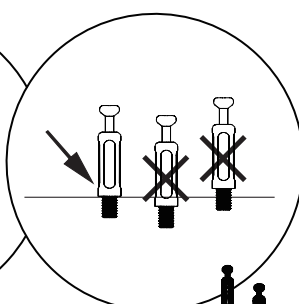
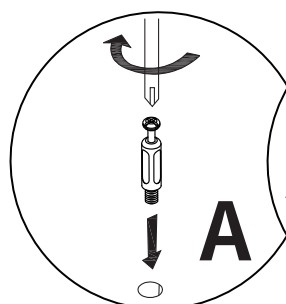
INSTRUCTION

# PARTS LIST



# INSTRUCTION

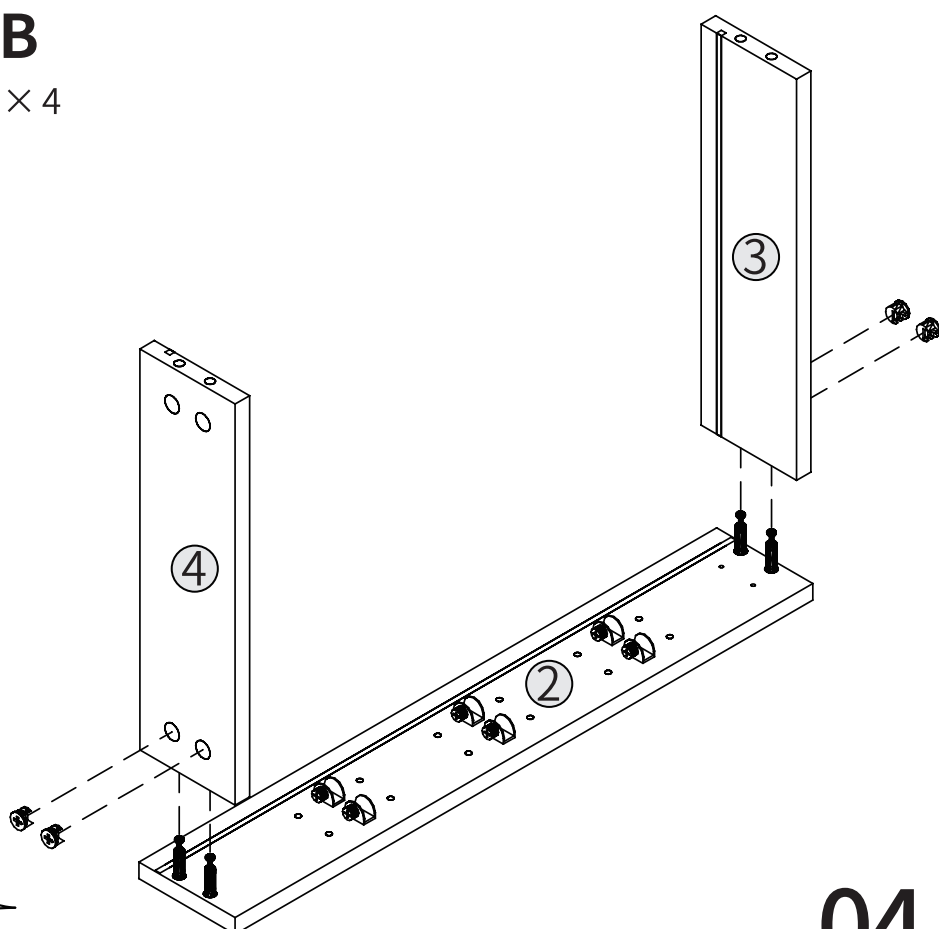
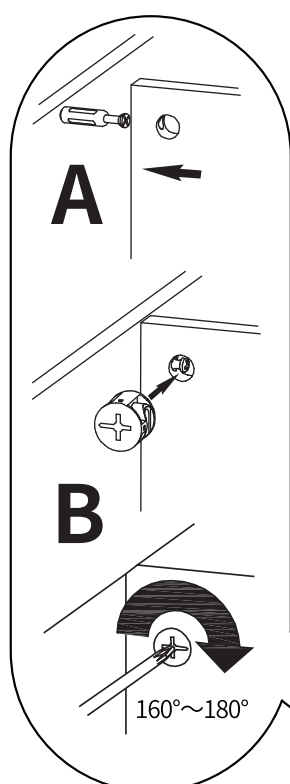
## STEP 1



You can choose which hole position to install this accessory (H) in according to actual needs.

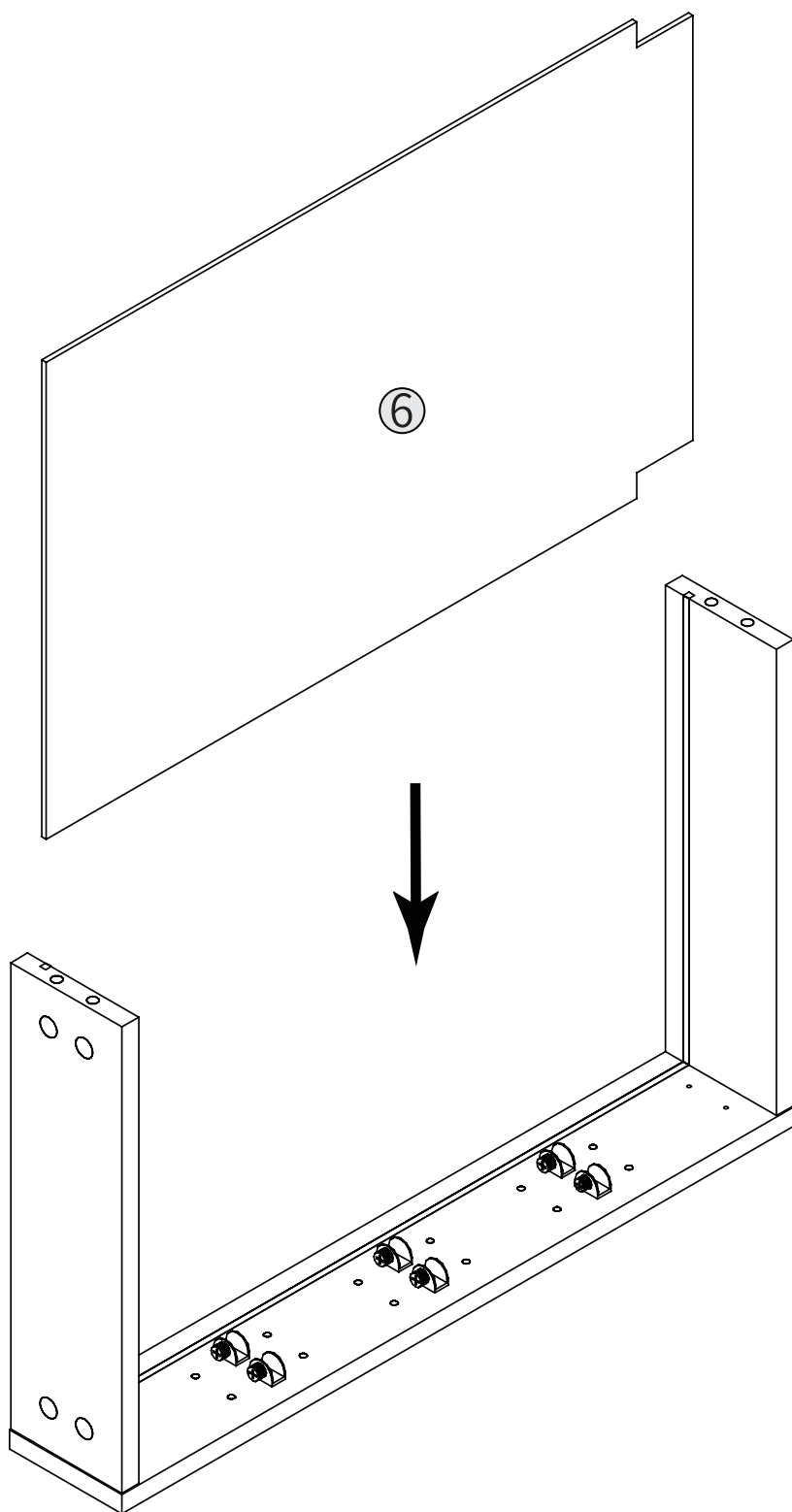
# INSTRUCTION

## STEP 2



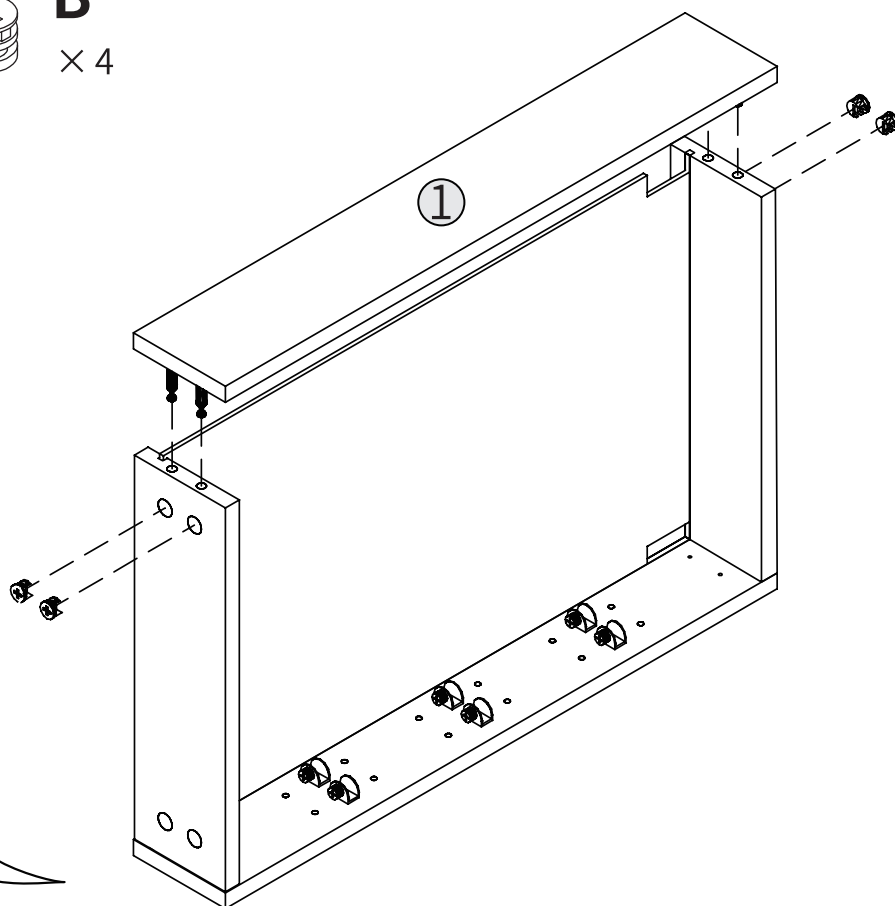
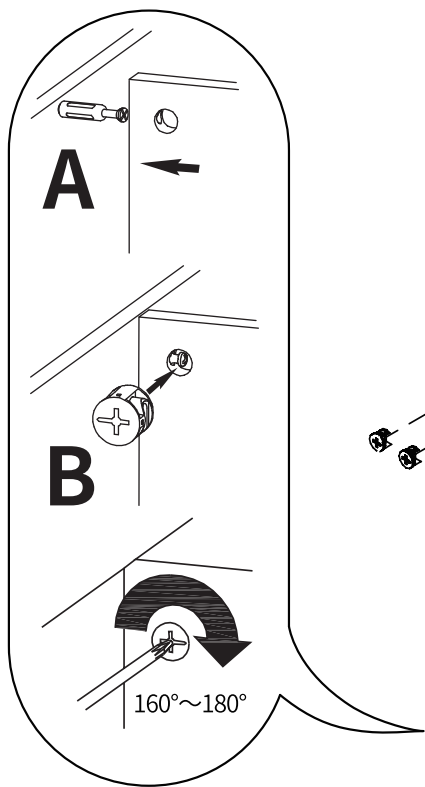
INSTRUCTION

# STEP 3



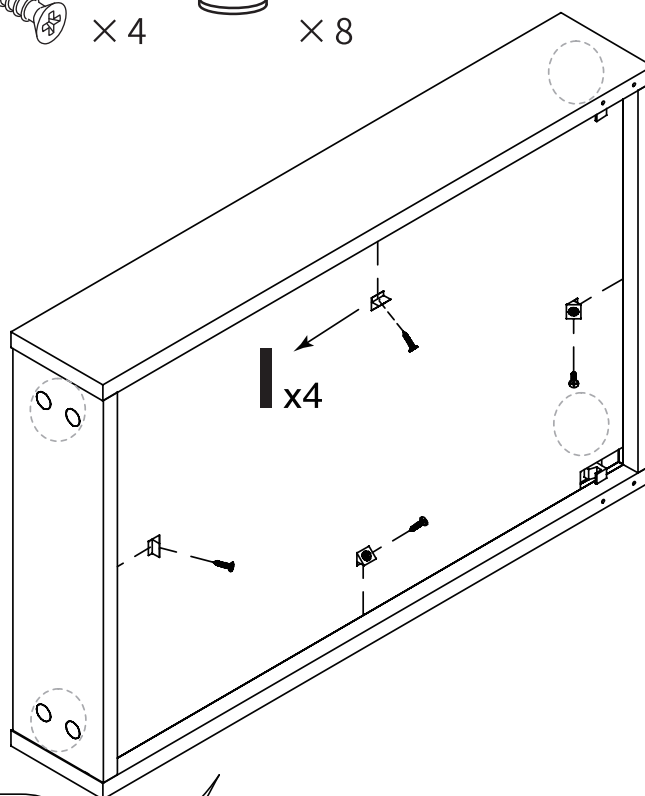
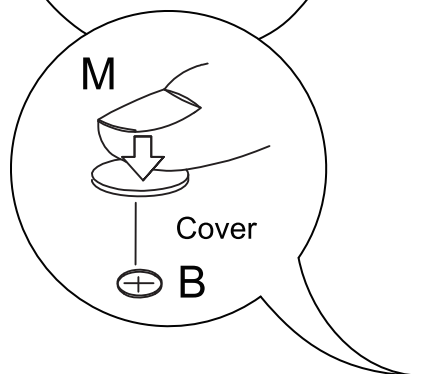
# INSTRUCTION

## STEP 4



# INSTRUCTION

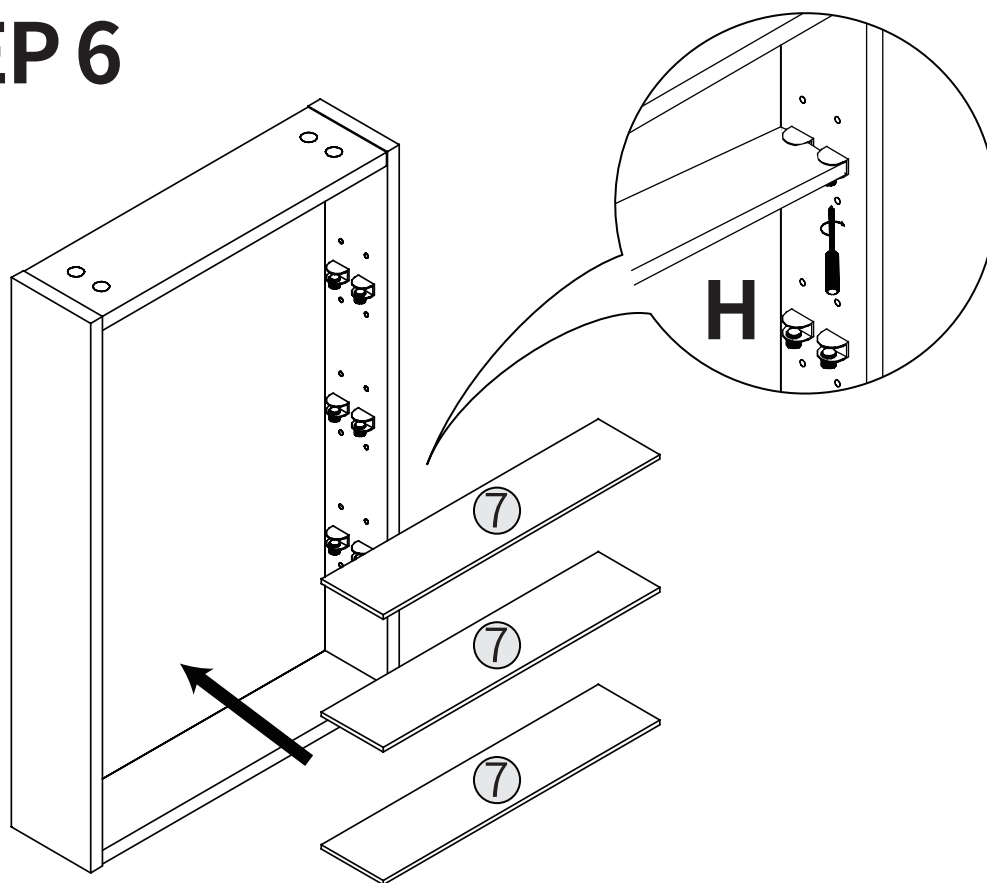
## STEP 5



Attaching the clips to the edges.

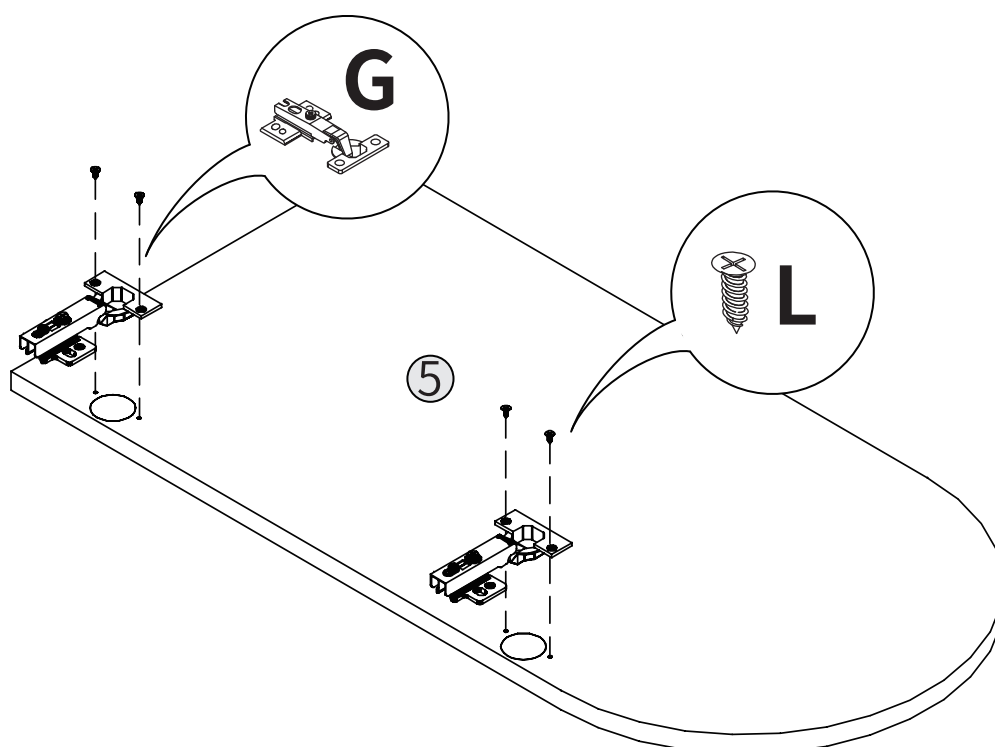
## INSTRUCTION

# STEP 6



## INSTRUCTION

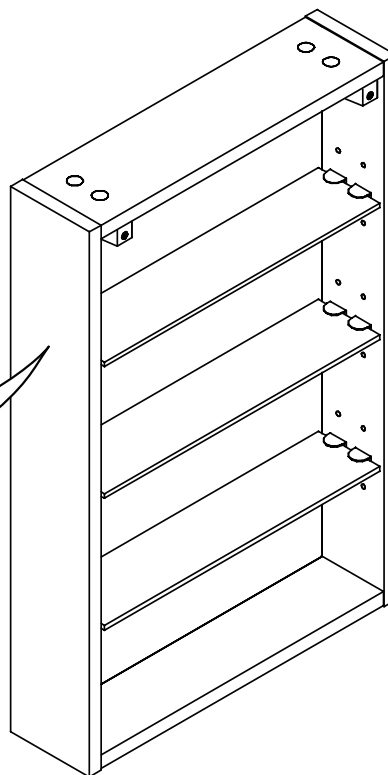
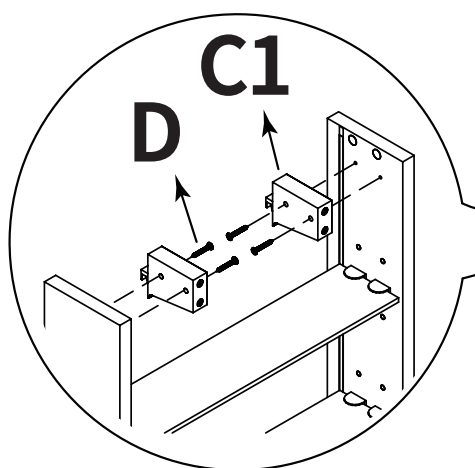
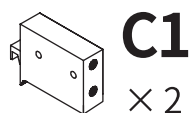
# STEP 7



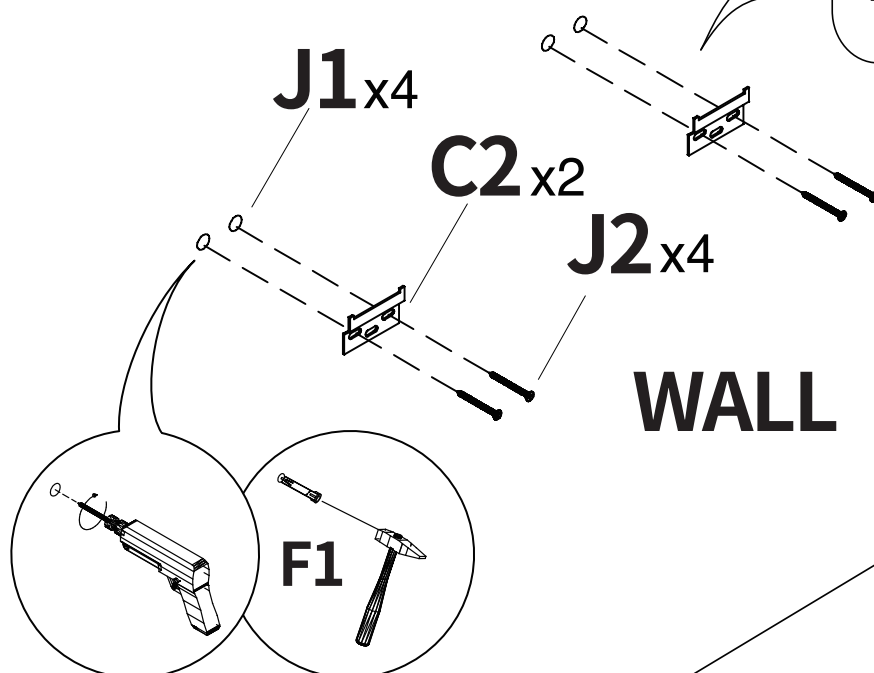
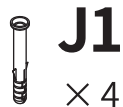
## INSTRUCTION

# Solid wall installation method

## STEP 1



## STEP 2

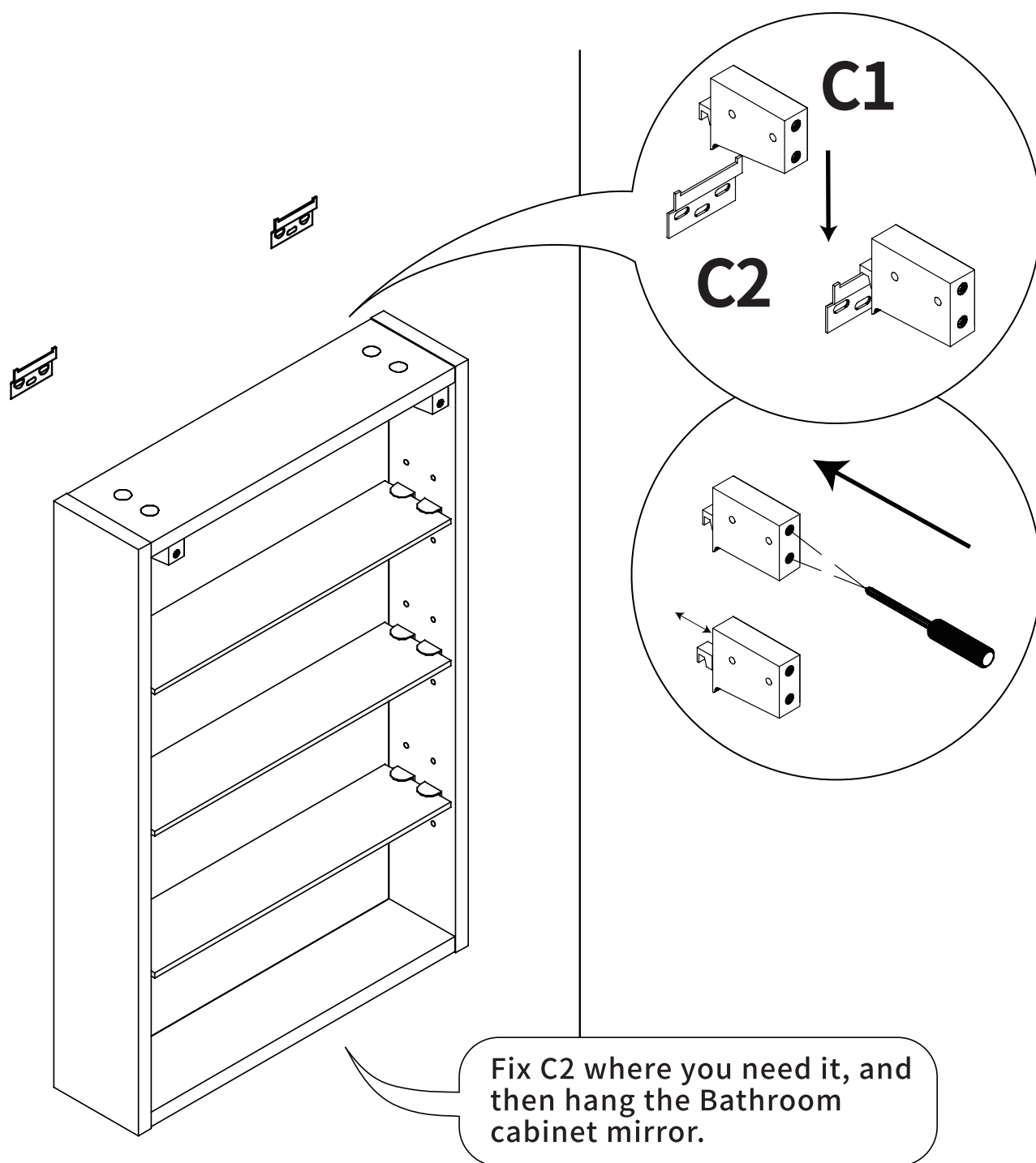


This accessory is intended for solid wall installations.



# INSTRUCTION

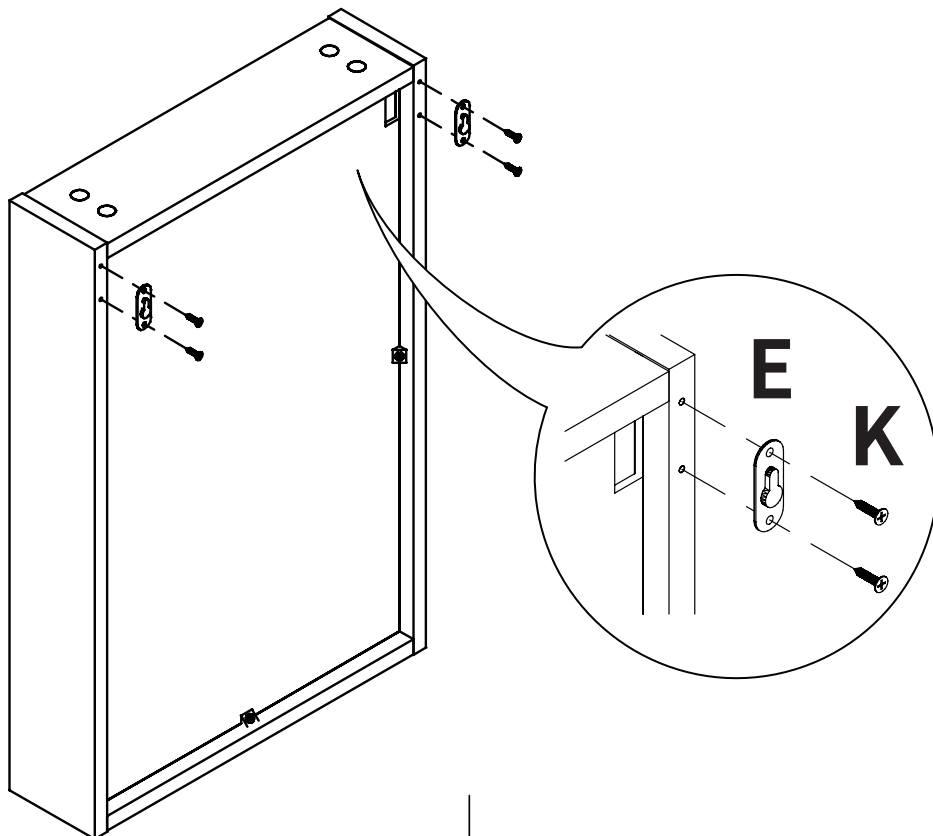
## STEP 3



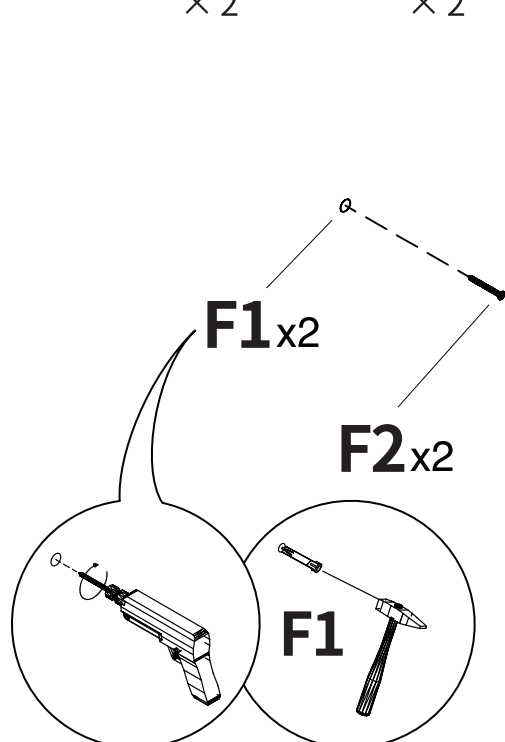
## INSTRUCTION

# Non-solid wall installation method

## STEP 1



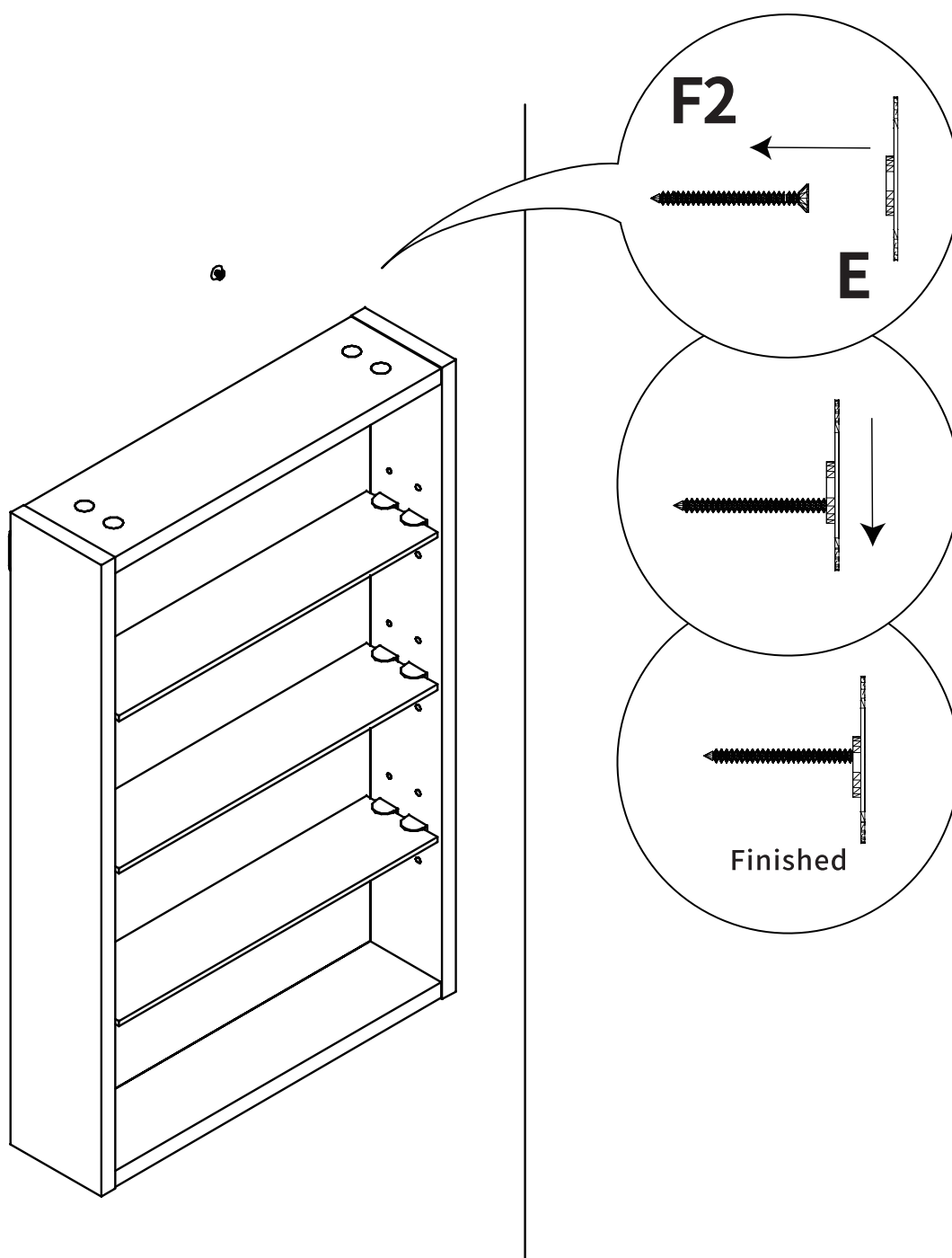
## STEP 2



This accessory is intended for non - solid wall installations.

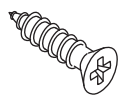
# INSTRUCTION

## STEP 3



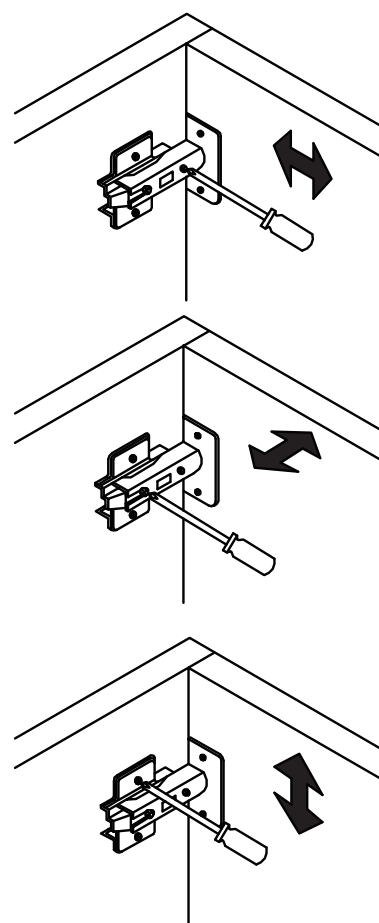
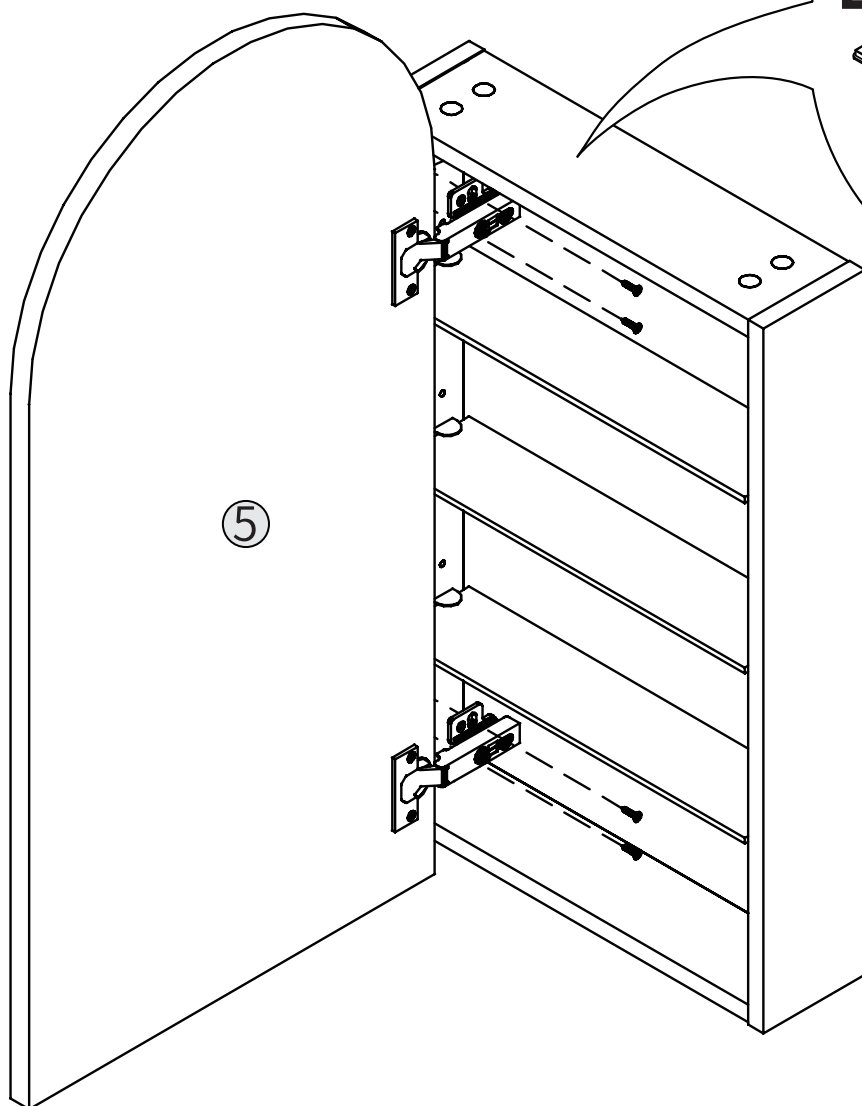
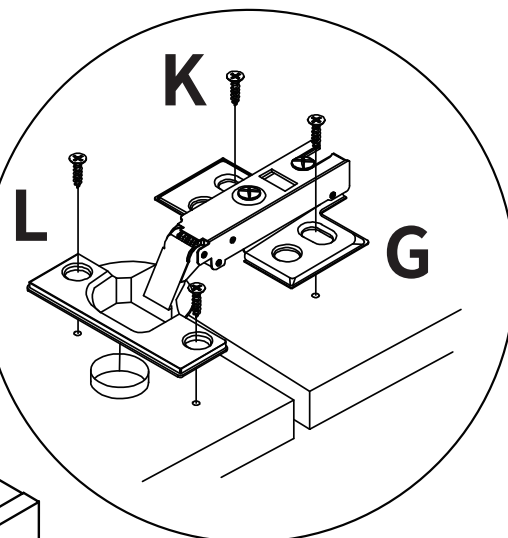
# INSTRUCTION

## STEP 8 —Adjustment Stage



**K**

× 4



Optimizing the cabinet door position by adjust accessory G.