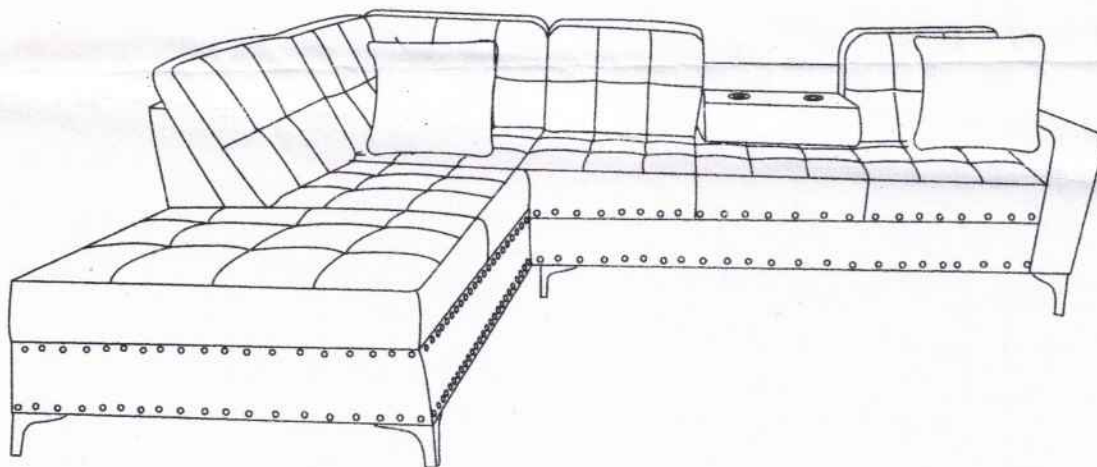


NOTICE BEFORE ASSEMBLY

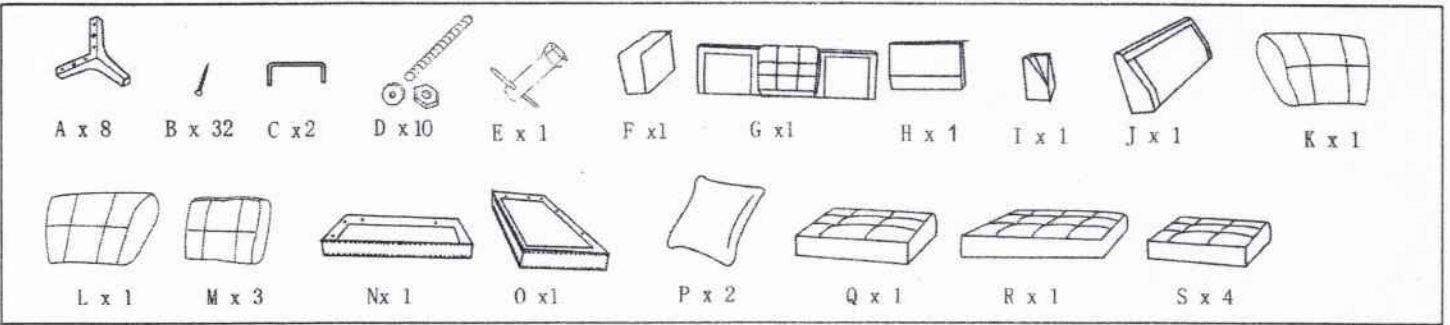
Please choose the **CHAISE** will be on the **LEFT** or **RIGHT** hand side

ASSEMBLY INSTRUCTION FOR MODEL NO. : S123 JOY

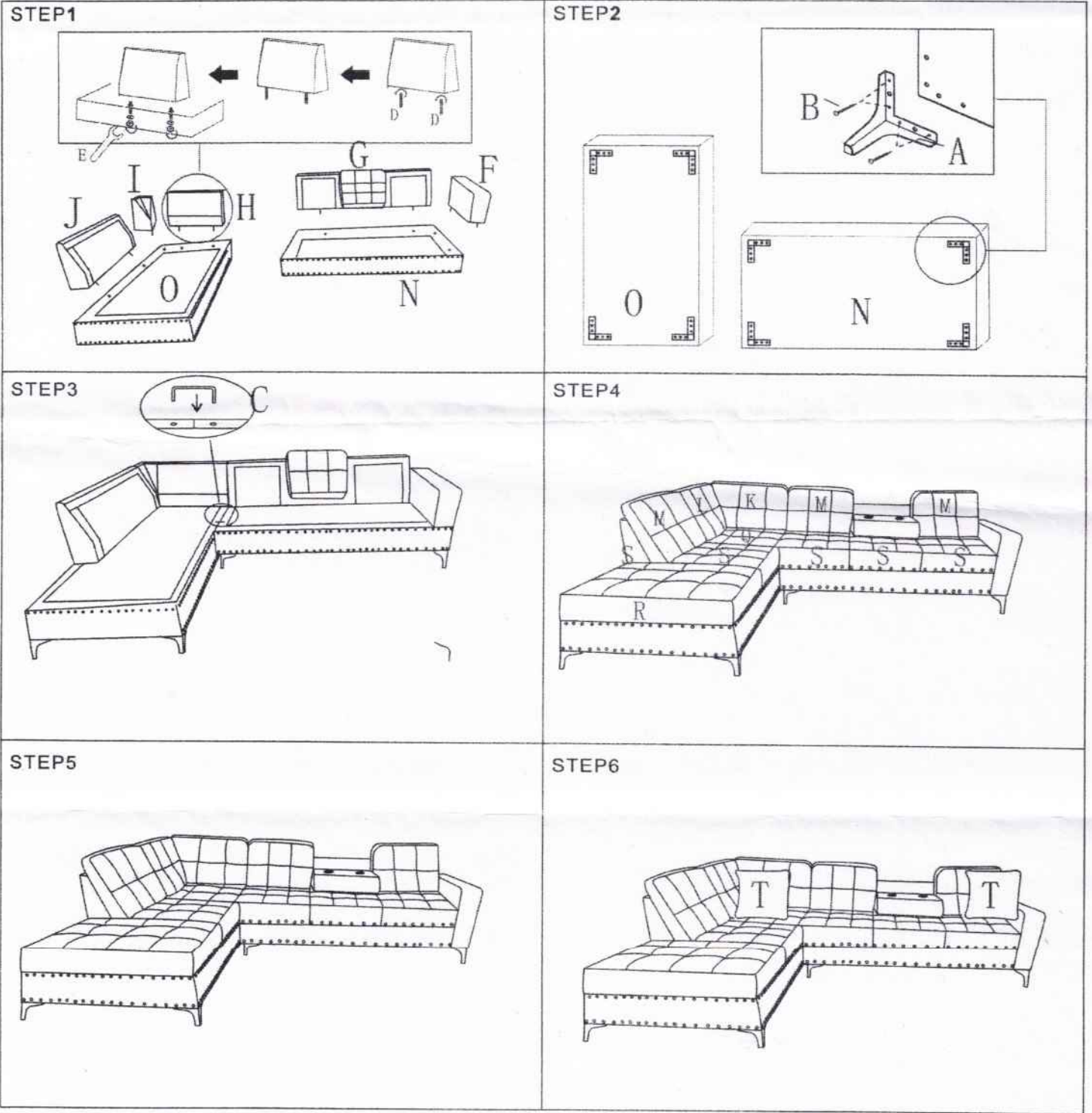
[LEFT-FACING CHAISE]



Part list



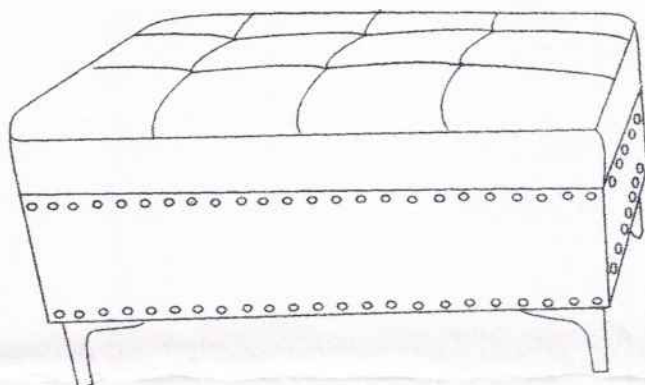
LEFT-FACING CHAISE



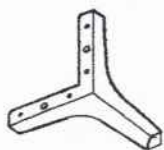
NOTICE BEFORE ASSEMBLY

ASSEMBLY INSTRUCTION FOR MODEL NO. : S123 JOY

OTTOMAN



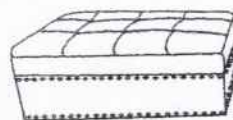
Part list



A x 4

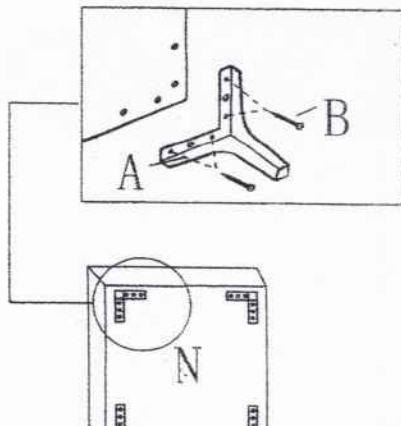


B x 8



C x 1

STEP1



STEP2

