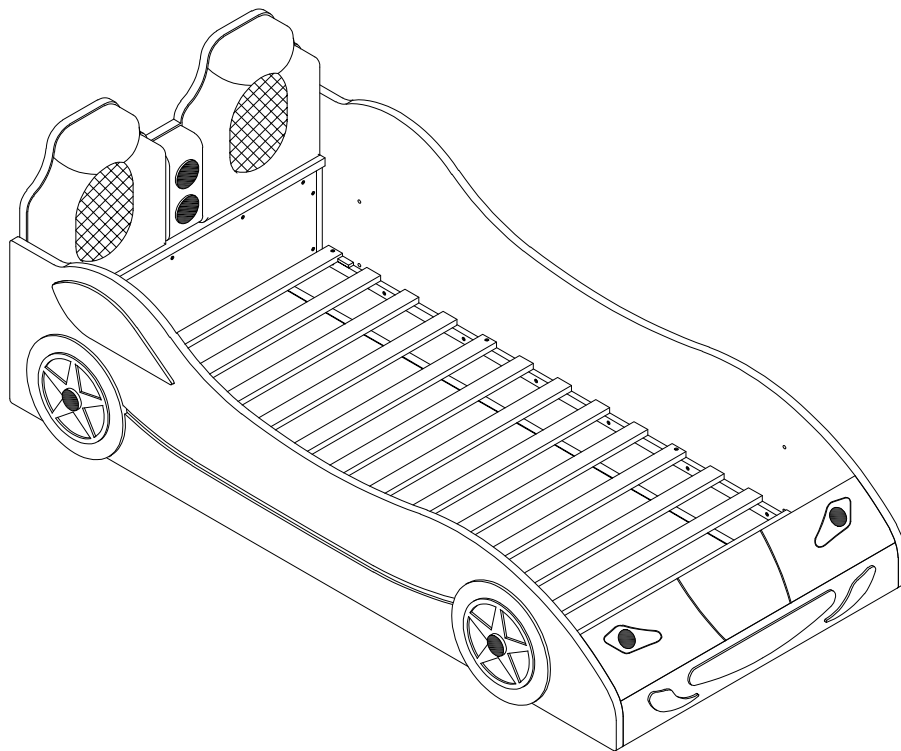


# ASSEMBLY INSTRUCTIONS COASTER FINE FURNITURE



*Fine Furniture for every stage of life*

**400479(B1&B2)**  
***Twin Bed***

# ITEM: 400479(B1&B2)

## ASSEMBLY INSTRUCTIONS



### ASSEMBLY TIPS:

1. Remove hardware from box and sort by size.
2. Please check to see that all hardware and parts are present prior to start of assembly.
3. Please follow attached instructions in the same sequence as numbered to assure fast & easy assembly.



### WARNING!

1. Don't attempt to repair or modify parts that are broken or defective. Please contact the store immediately.
2. This product is for home use only and not intended for commercial establishments.



**ASSEMBLY TIME**

**30 MINUTES**

## PARTS IDENTIFICATION

### B1 (BOX 1)

A	HEABOARD		1PC	E	HEADBOARD CONCEAL PANEL		1PC
B	FOOTBOARD BOTTOM PANEL		1PC	F	FOOTBOARD CONCEAL PANEL		1PC
C	FOOTBOARD TOP PANEL		1PC	G	ROLL SLAT (14PCS)		1SET
D	FOOTBOARD SUPPORT		1PC	H	ADAPTER		1PC

### B2 (BOX 2)

I	LEFT SIDE RAIL		1PC	J	RIGHT SIDE RAIL		1PC
---	----------------	--	-----	---	-----------------	--	-----

## HARDWARE IDENTIFICATION

### Z-B1 (BOX1) - HARDWARE PACK IS LOCATED IN 400479(B1)

1	BOLT (5/16 x 35mm - BLK)		10PCS	4	WOOD DOWEL (10 x 40mm)		14PCS
2	LONG FLAT HEAD SCREW (4 x 35mm - BLK)		12PCS	5	ALLEN WRENCH (5 x 57MM - BLK)		1PC
3	SHORT FLAT HEAD SCREW (4 x 20mm - BLK)		20PCS				

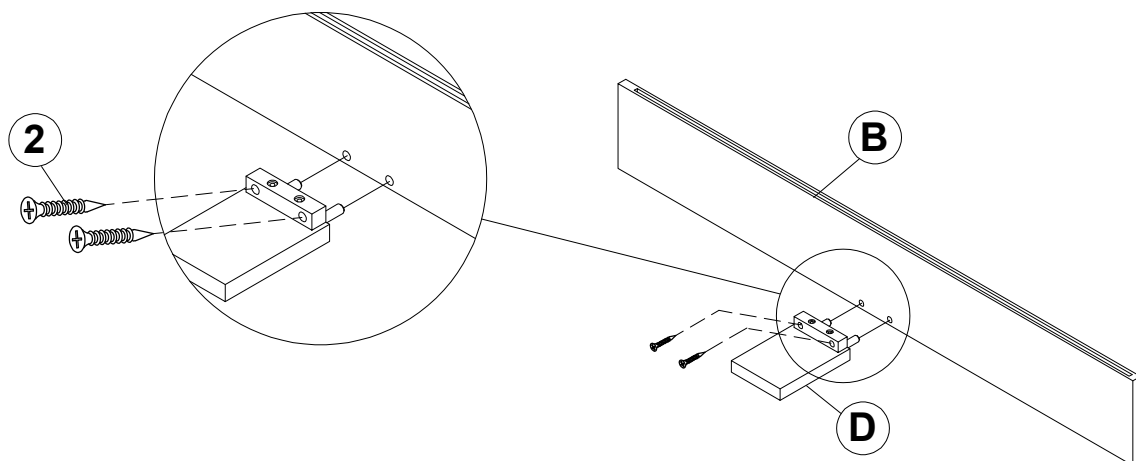
### NOTE:

Phillips head screw driver is required in the assembly process; however, manufacturer does not provide this item.

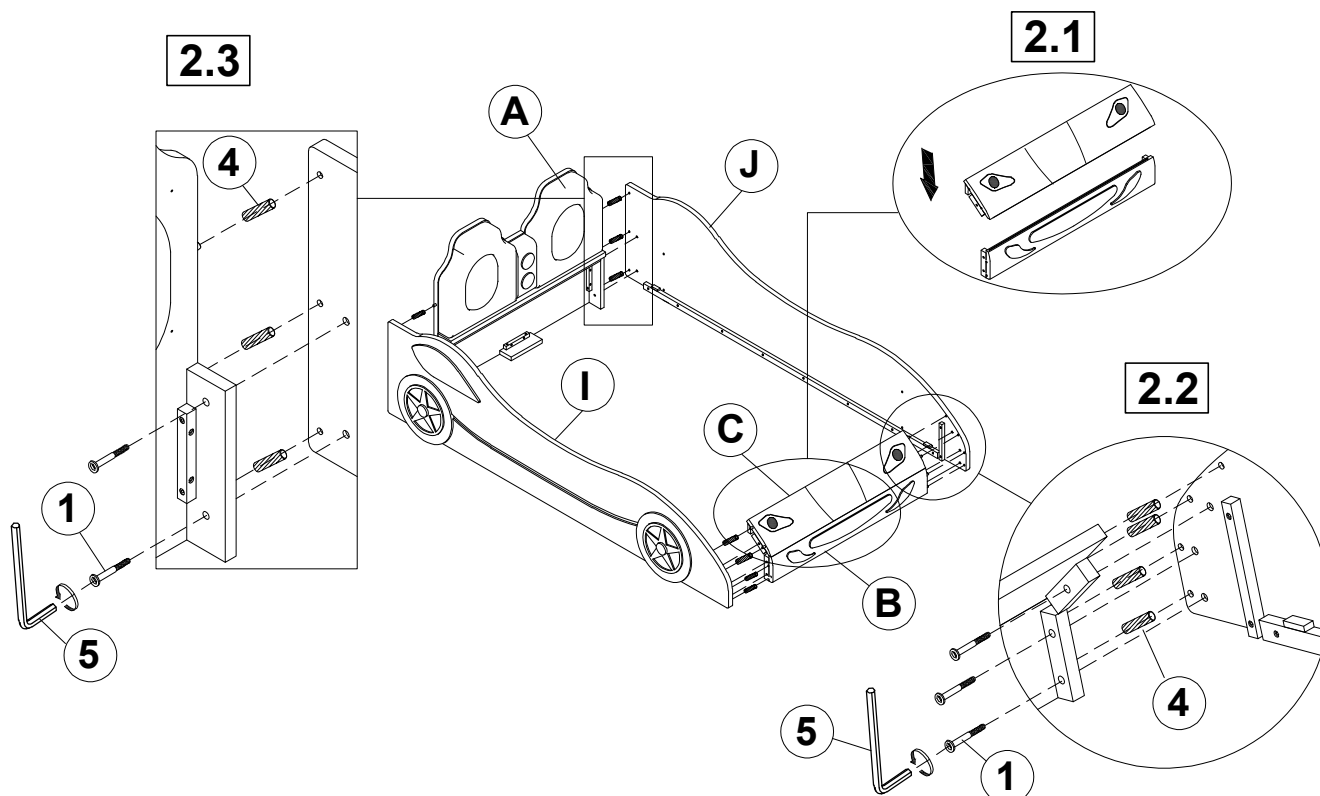
ITEM: **400479(B1&B2)**

## ASSEMBLY INSTRUCTIONS

### STEP 1



### STEP 2

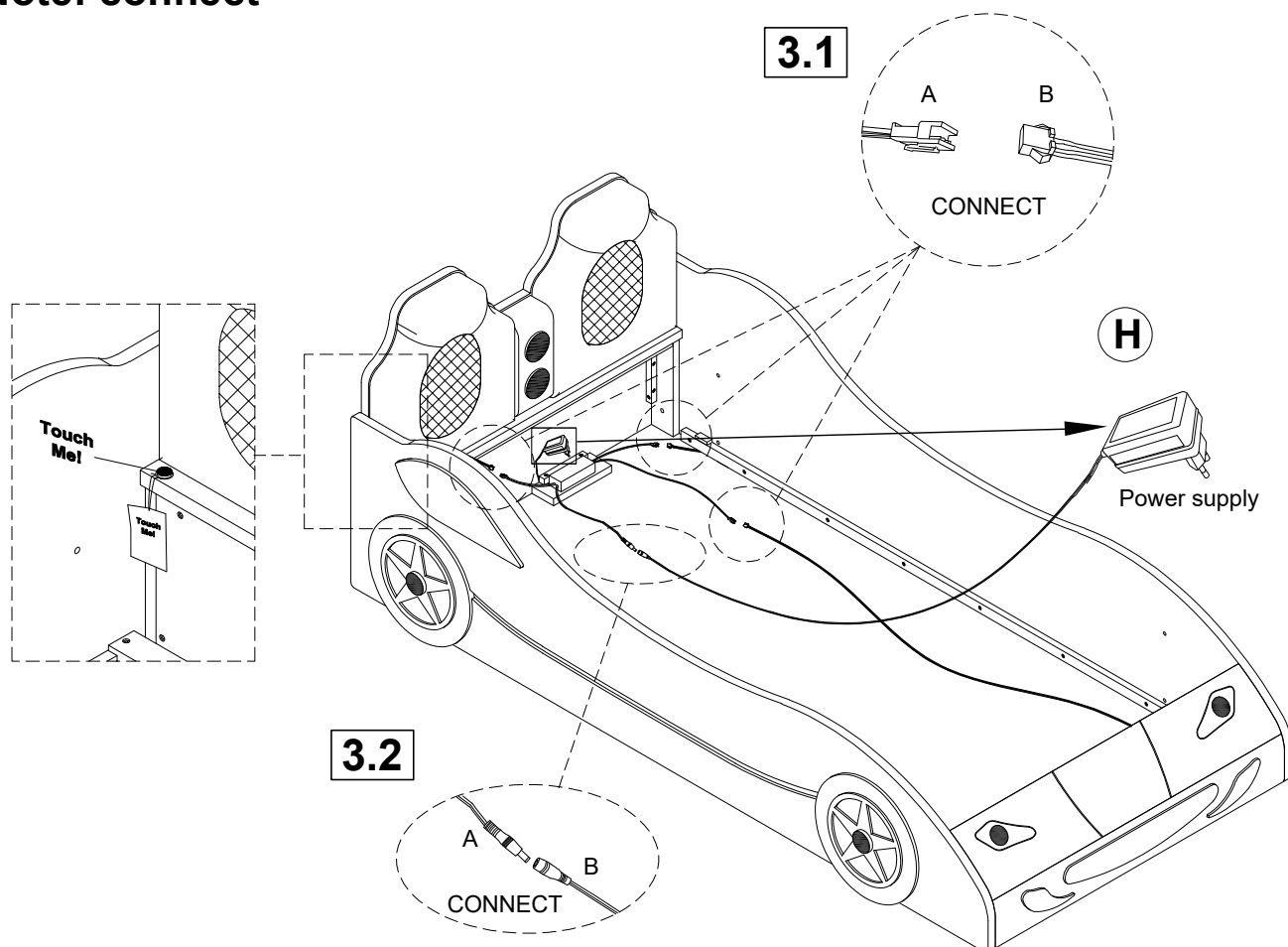


ITEM: **400479(B1&B2)**

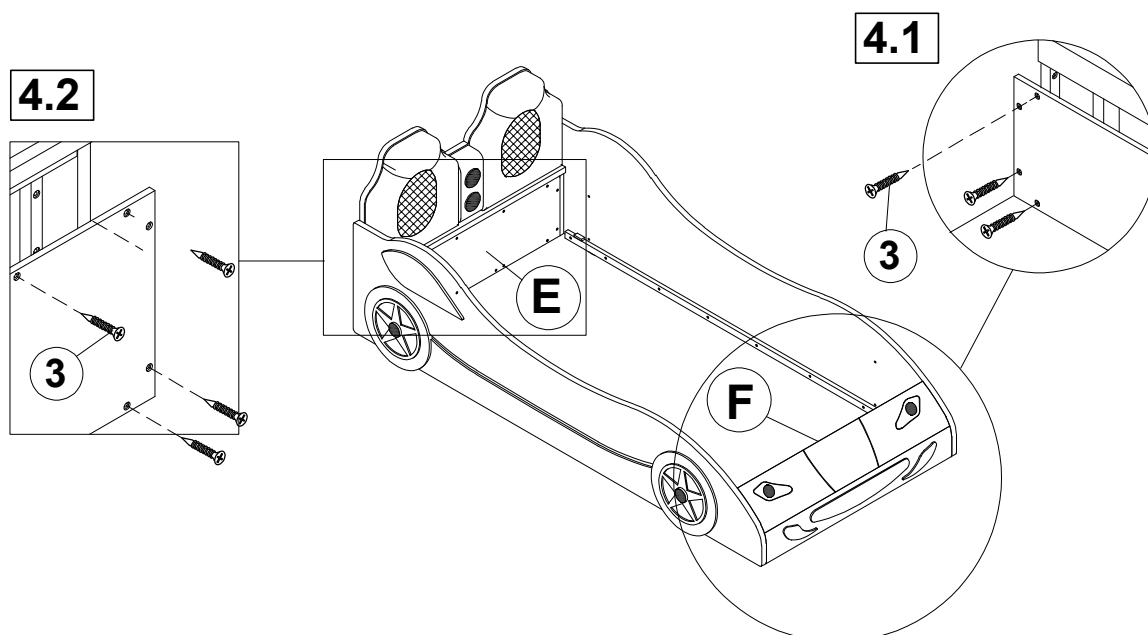
## ASSEMBLY INSTRUCTIONS

### STEP 3

Note: connect



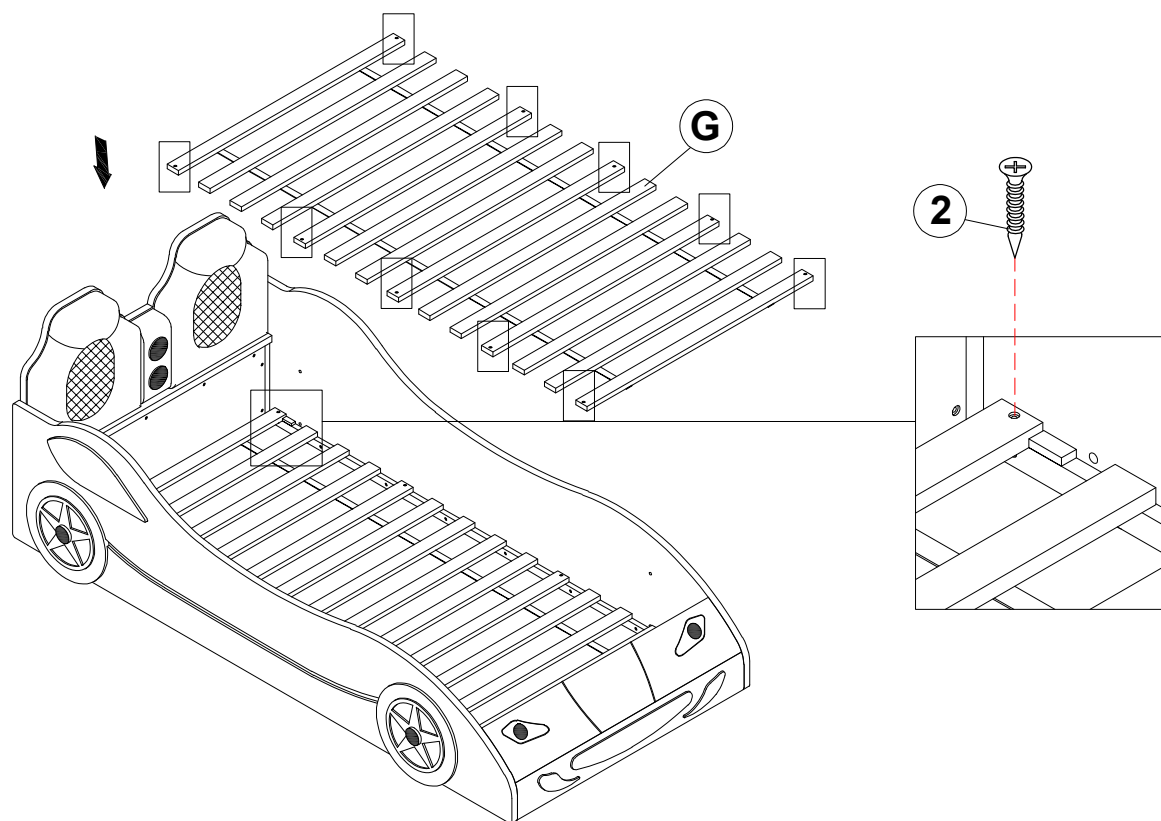
### STEP 4



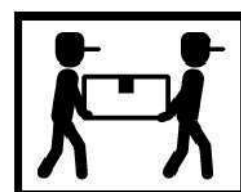
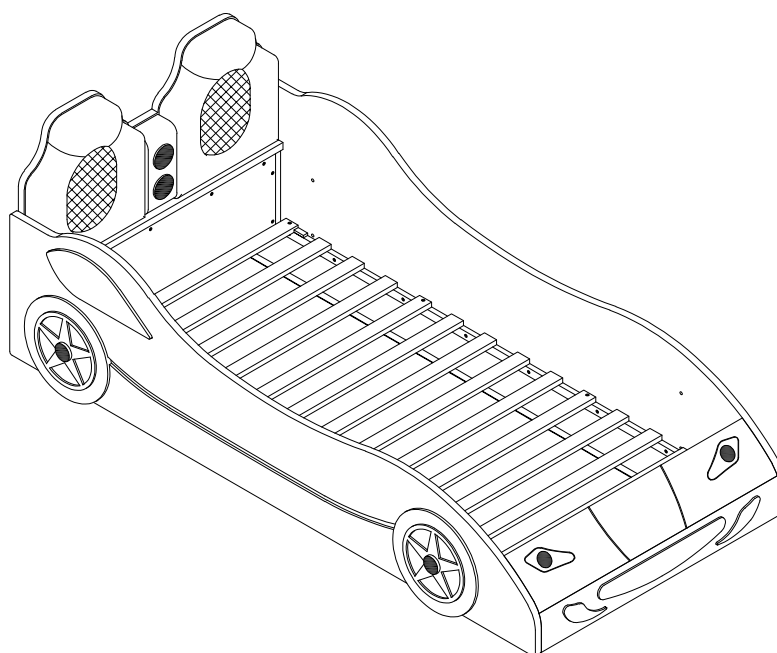
ITEM: **400479(B1&B2)**

**ASSEMBLY INSTRUCTIONS**

**STEP 5**



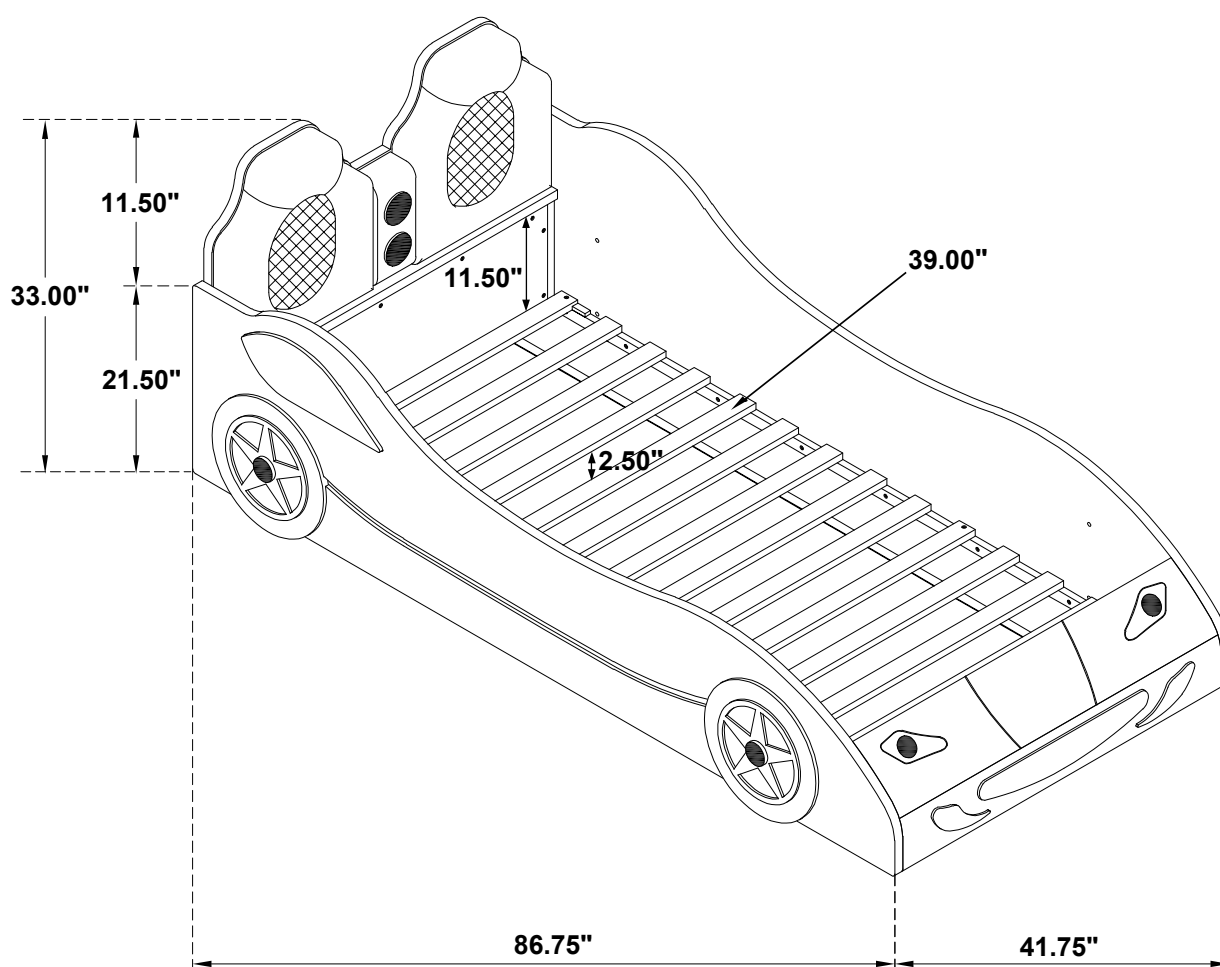
**STEP 6**  
**COMPLETE**



ITEM: **400479(B1&B2)**



**Inner Size : 75.00"W x 39.00"D**



**Note: Dimension Tolerance  $\pm 5\%$**