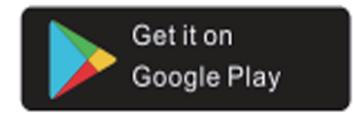


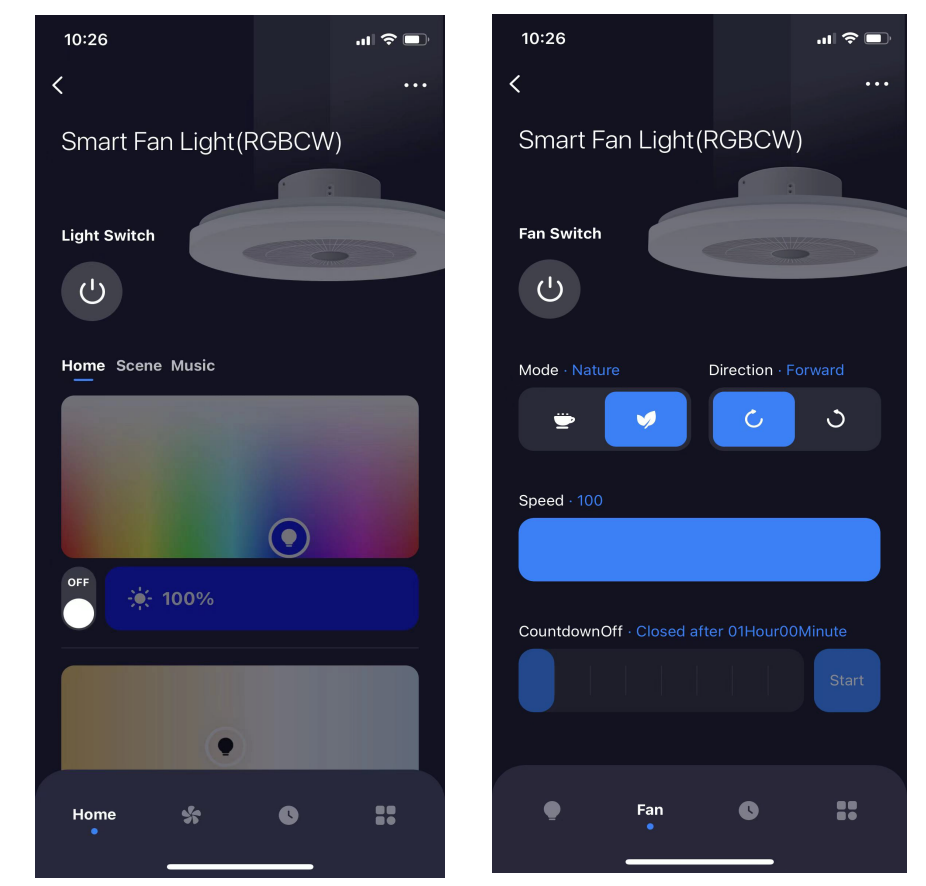
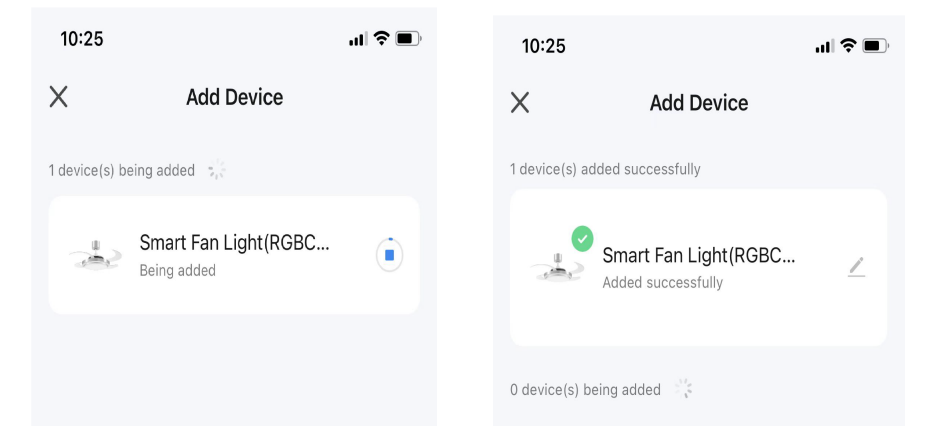
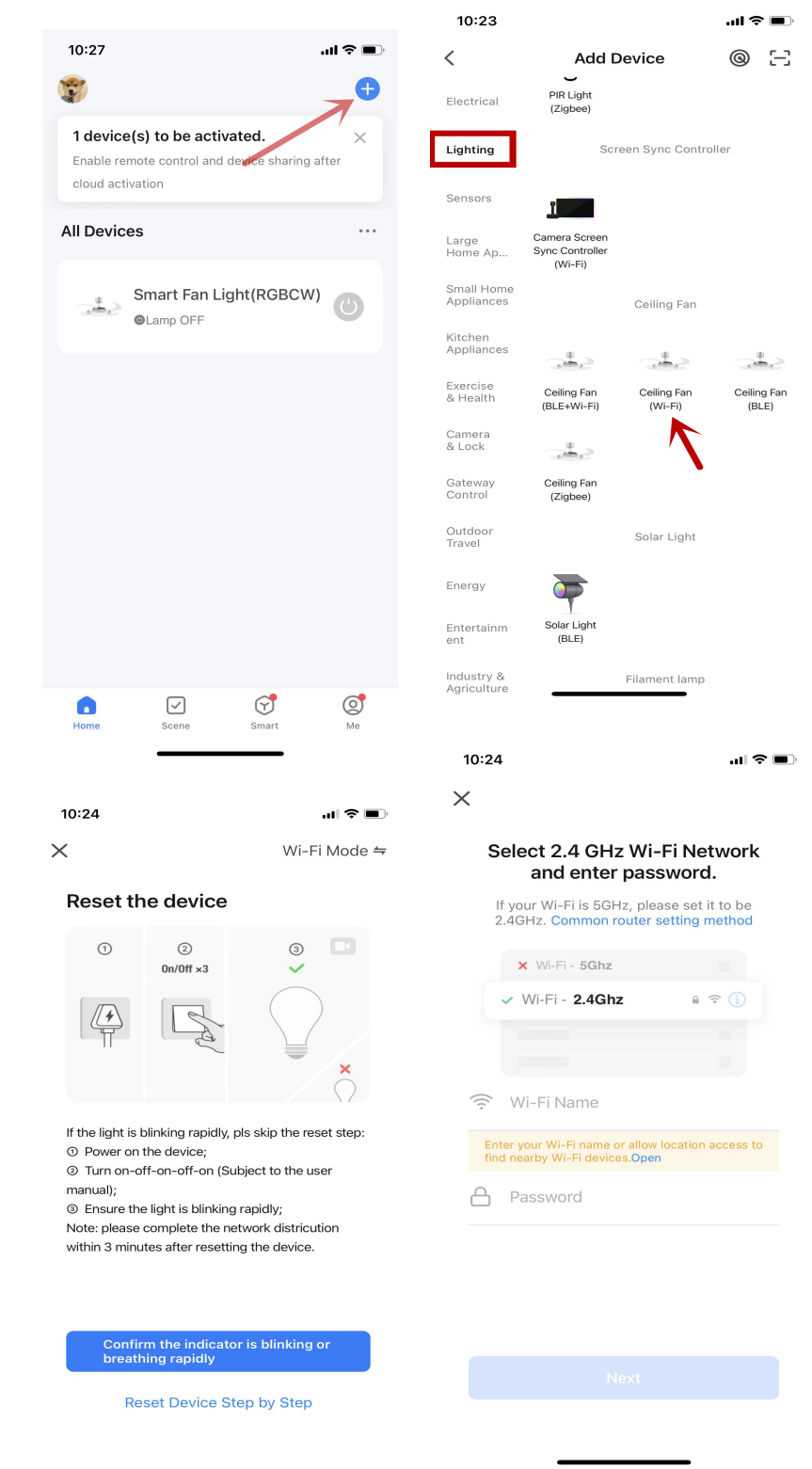
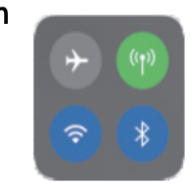
Smart Ceiling Fan Light

Product Installation Instructions

Download "Smart Life" app

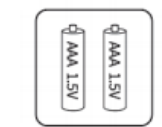
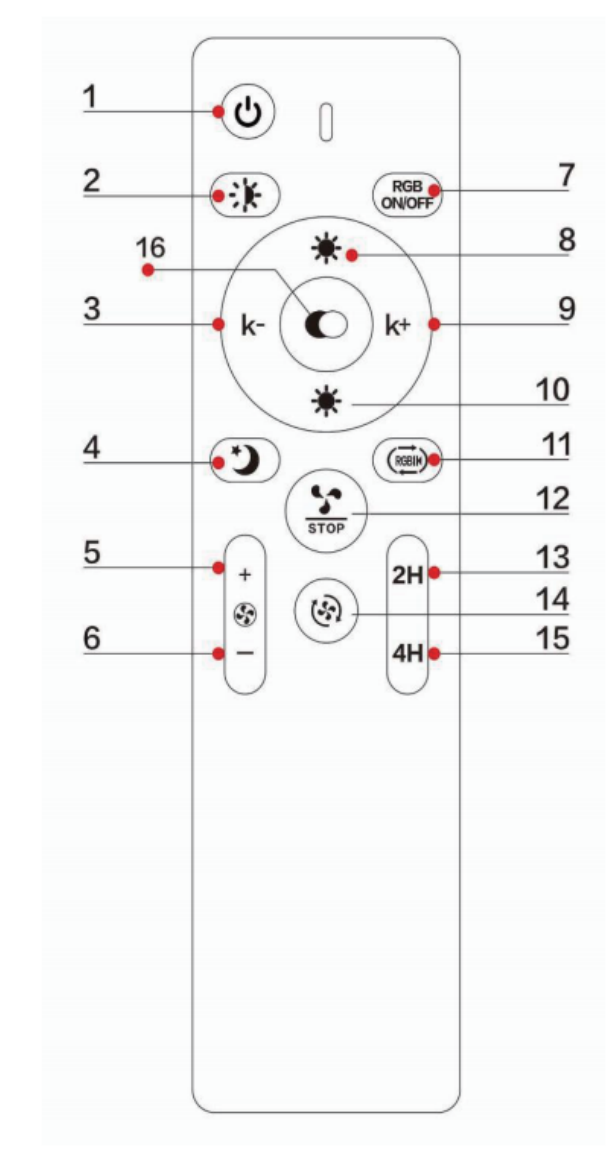
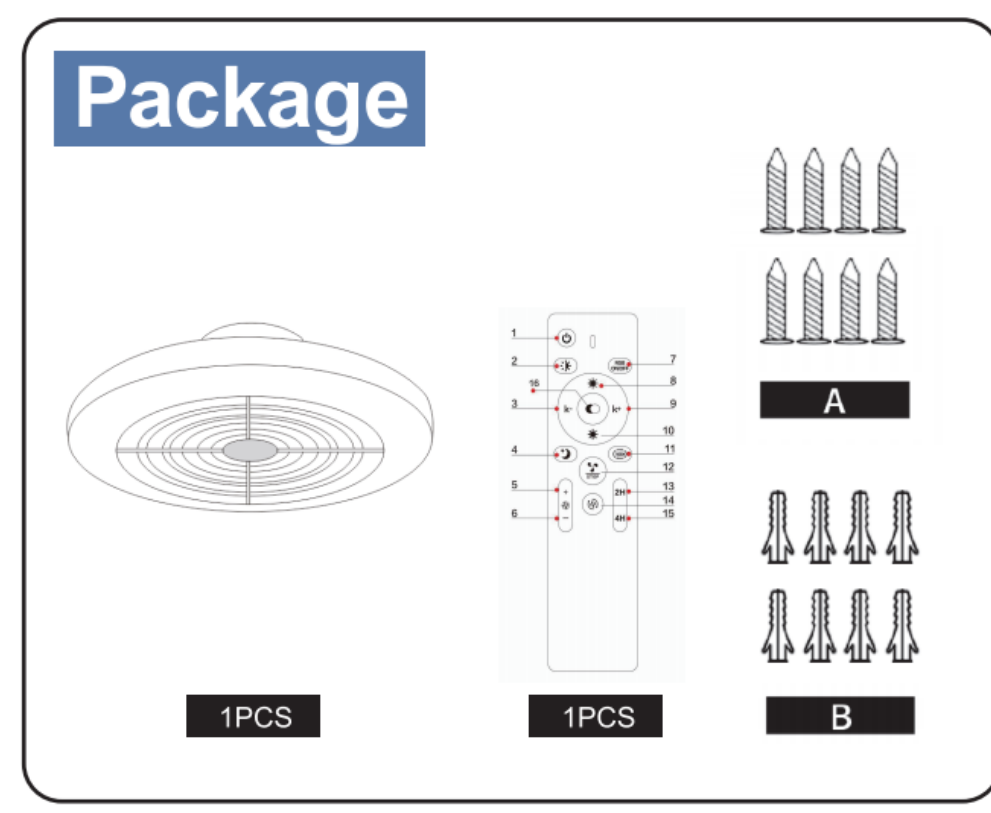
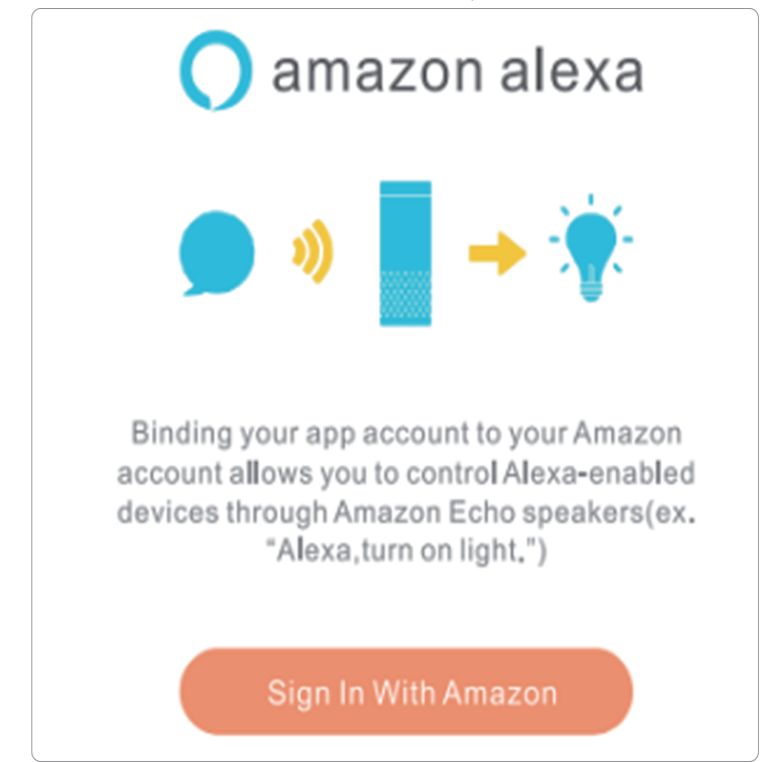


1. Register an account and choose your country.
 2. Connect your phone to WIFI(2.4Ghz only) and turn the bluetooth on.
 3. Turn your light on.
- The light will start flashing
turn on/off 5 times(on/off/on/off/on/off/on/off/on/off)



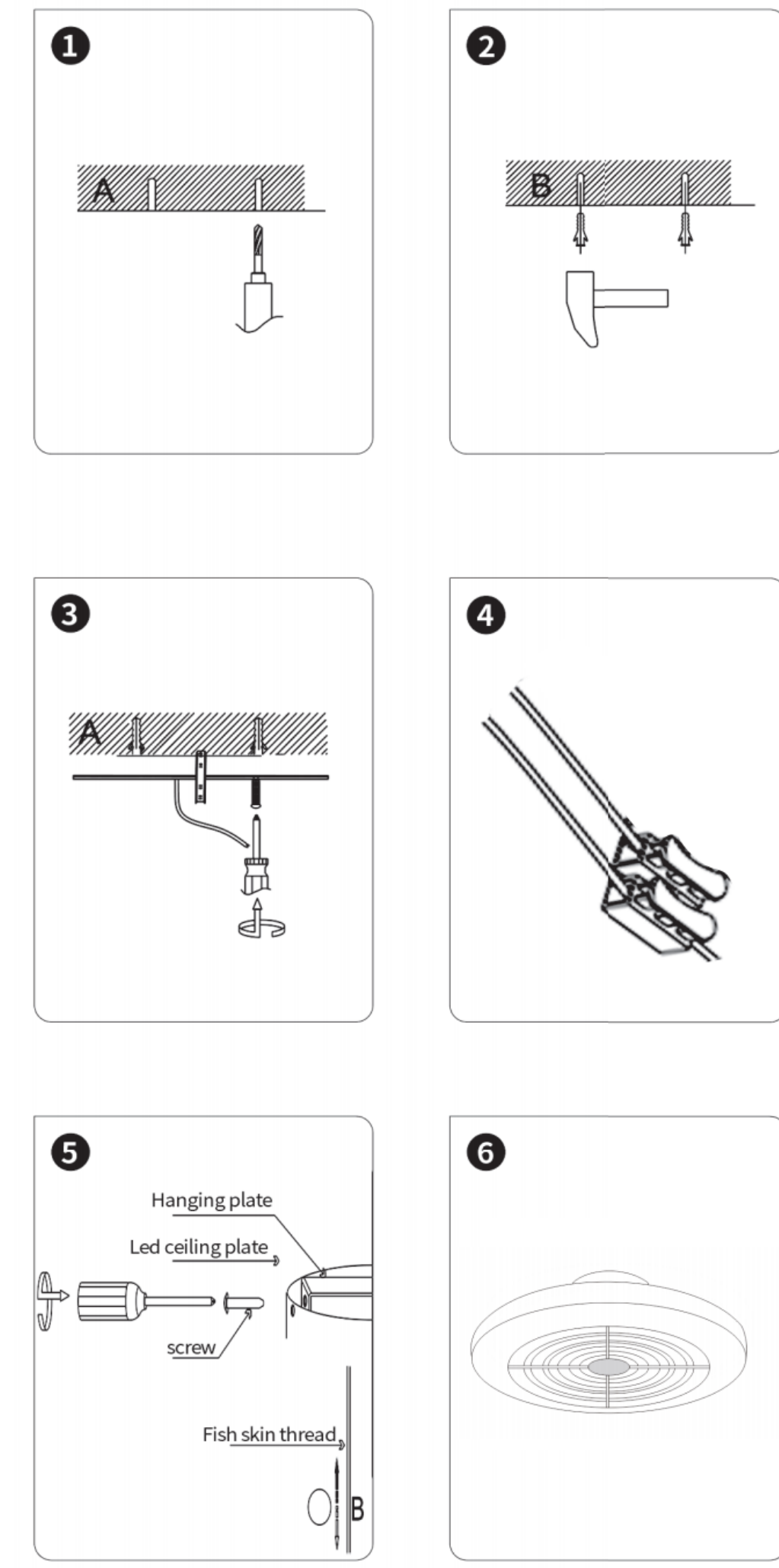
Enable Smart Life skill in Alexa APP

Open your Alexa APP



NOTICE
This remote cotroller does not pack batteries, please put 2x1.5v batteries into it before use.

INSTALL



EN

1	⏻	OFF
2	⏻	Switch Main Light
3	k-	Color Temperature-
4	🌙	Night Light
5	⏻ +	Wind Speed+
6	⏻	Wind Speed-
7	RGB	RGB ON/OFF
8	☀️	Brightness+
9	k+	Color Temperature+
10	☀️	Brightness-
11	RGB	RGB Adjusted Only
12	🌀	Fan Switch
13	2H	2 hours timing
14	🌀	Wind blade reverse
15	4H	4 hours timing
16	🌙	Light source switching

Detailed Description:

Thank you for purchasing our products. Before installing the product, please read the instruction manual carefully and keep it for future use. Thank you.

1.Product Parameters

Name:	Smart Ceiling Fan Light
Size:	500*160MM
Wattage:	30W+RGB48W+DC16W
Lumens:	4800LM
Color Temperature:	3000K+6500K+RGB
Lifetime:	30000H
Volts:	100V-240V
CRI	>80RA
Certification:	CE FCC ROHS

2.Instructions for using the remote control

Long Press the button "1" 5S after turning on the ceiling light, and the ceiling light flashes, indicate the remote control is successfully coded.

3.Memory function of the ceiling light

After the light is turned off and turned on again, the light will turn on according to the color and brightness set when the light was turned off last time.

4.Safety Tips

- ① For safety reasons, it is recommended to have a professional electrician install them.
- ② Do not touch the power of the luminaire after connecting the circuit.
- ③ In case of any accident, disconnect the power first, then ask an electrician to check and fix it.