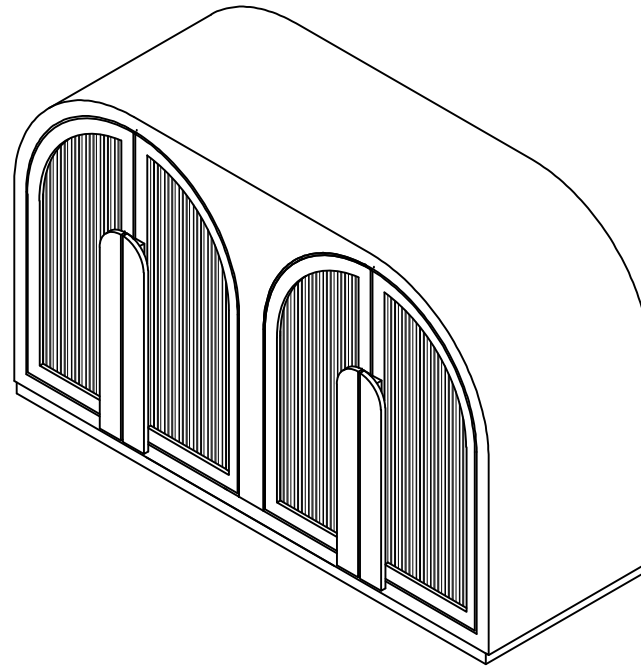


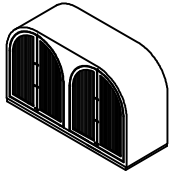
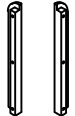


ASSEMBLY INSTRUCTIONS.

SALONE CABINET BLACK



THANK YOU FOR YOUR PURCHASE!

PARTS AND HARDWARE.

NO.	DESCRIPTION	IMAGE	QTY
①	CABINET		1
②	WOOD HANDLES		4
③	BOLT (M4*25)		12
④	ALLEN KEY		1

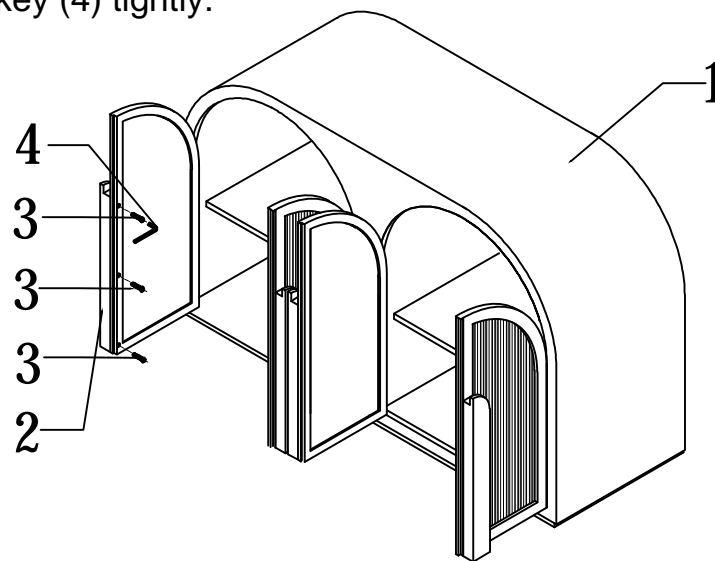
NOTES.

Thank you for purchasing this quality product! Be sure to check all packing material carefully for small part that may have come loose inside the carton during shipping.

Caution: The item is heavy, assembly should be performed by two people.

STEP 1.

Assembling the Wood handles (2) with Bolts (3), and Allen key (4) tightly.



STEP 2.

Assembly finished .

Please adjust adjustable feet if ground or blanket is uneven.

