

ASSEMBLY INSTRUCTIONS

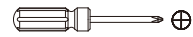
Console Table

**ASSEMBLY
REQUIREMENTS**

**2-Person
Assembly**

**1 Hour
Assembly Time
(Approximate)**

**Tools Required
(Not Provided)**



Phillips Screwdriver

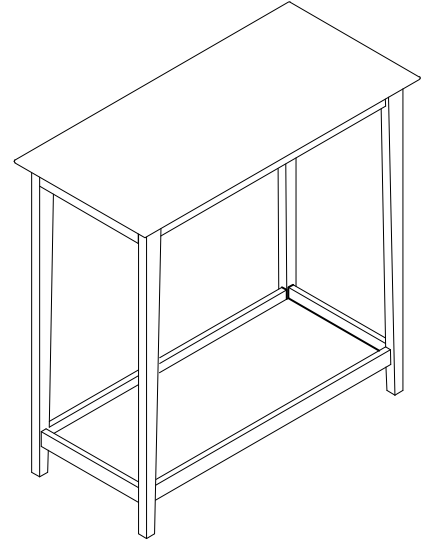


Flat Screwdriver

Thank you for purchasing our product!

Please refer and use this assembly instruction to assemble the product. Contact our customer service department in case there are any missing or damage parts or hardware. Replacement parts are normally shipped within 2 or 3 days.

We appreciate your business!



ASSEMBLY PREPARATION

1. Remove all packaging materials, staples and packing straps from the carton.
2. Refer to Parts List and Hardware List. Ensure parts and hardware are complete before assembling the product.
3. Contact customer service for missing parts.
4. Place all wooden parts on a clean, flat and soft surface (e.g. carpet or rug) to prevent parts from getting scratched.

SAFETY PRECAUTION

1. KEEP ALL HARDWARE PARTS OUT OF REACH OF CHILDREN.
2. DISPOSE PLASTIC PACKAGING MATERIAL IMMEDIATELY TO AVOID ANY RISK OF SUFFOCATION TO CHILDREN AND ANIMALS.

TIPS FOR ASSEMBLY

1. Allow ample room for assembly and in close proximity to where product will be placed.
2. Assemble the product on a surface that does not scratch or damage the exterior gloss and finish of the furniture.
3. Check all of the parts and quantities are included before assembly.
4. Identify all of the parts, hardware and quantities required for each step.
5. During assembly, do not over-tighten any fittings as this may cause damage.
6. DO NOT USE POWER TOOLS TO ASSEMBLE THIS PRODUCT.
7. Always place the product on a flat, level surface.
8. Do not sit or stand on the partially assembled product; only use the product for which it is intended.

CARE AND MAINTENANCE

- Use a slightly damp cloth to clean the product. Do not use bleach or abrasive cleaning material.
- Check all the fittings periodically and re-tighten as necessary. Do not use the product if any of the parts is damaged or broken.
- Never allow any kind of liquid to remain on your furniture. Absorption can cause wood to warp or delaminate.
- Do not place hot items (e.g. hot drinks) directly onto the wood surface.
- Do not drag and/or pull the furniture.

This product is for indoor and household use only - not for commercial use.



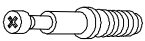


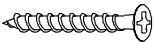
ASSEMBLY INSTRUCTIONS

Console Table

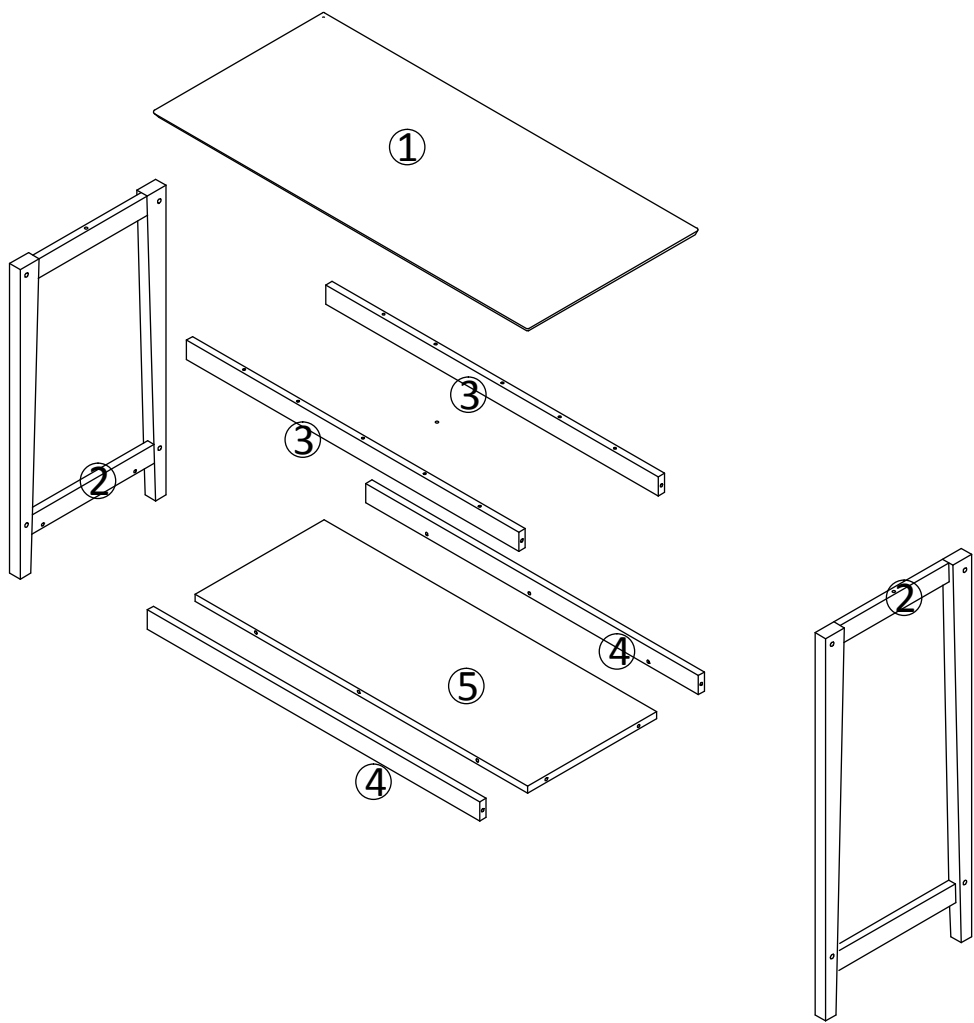
Parts List

Parts #	Part Name	Quantity
①	Table Top	1
②	Leg Frame	2
③	Top Rail	2
④	Bottom Rail	2
⑤	Bottom Panel	1

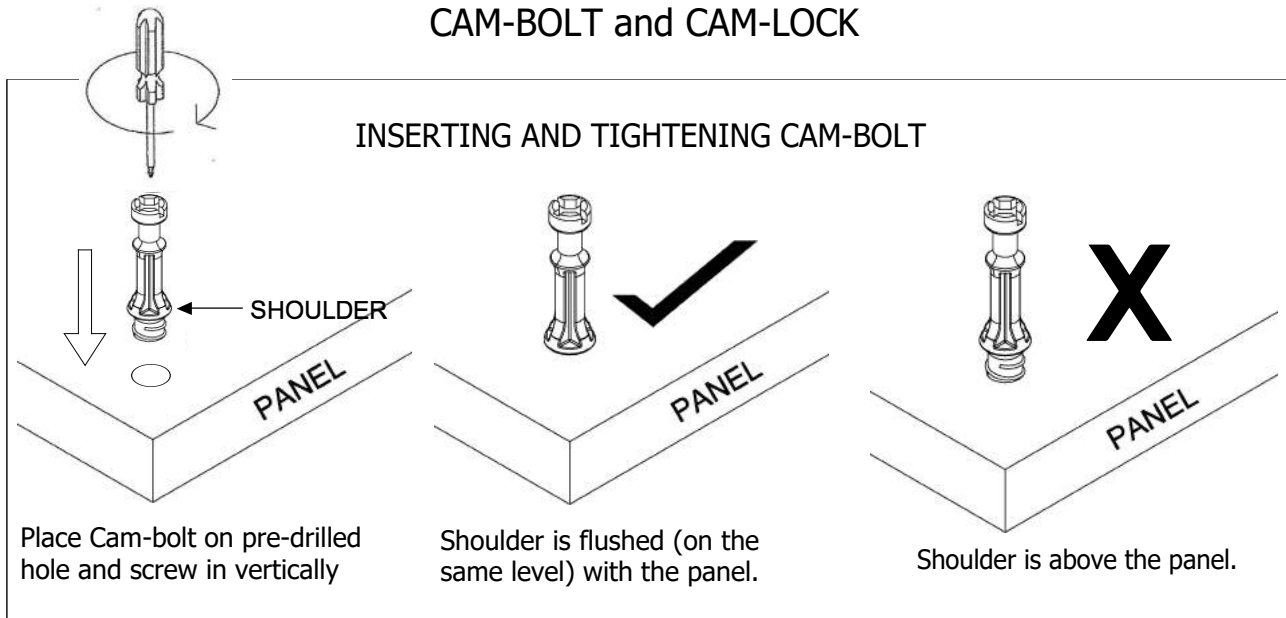
Hardware List

Item	Description	Part	Qty
A	Bolt M6x50mm		8
B	Barrel Nut		8
C	Cam-bolt		6
D	Cam-lock		6
E	Wood Dowel		8
F	Screw M4x 45mm		8

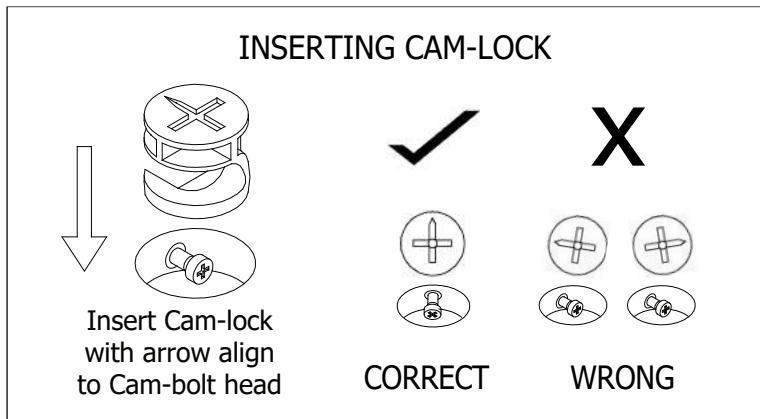
Parts Assembly Overview



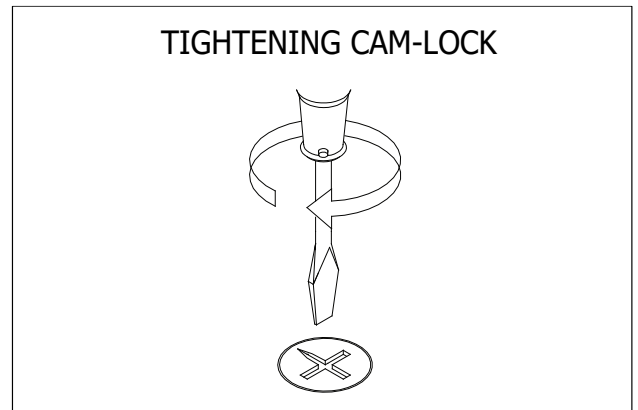
Instructions For Fastening CAM-BOLT and CAM-LOCK



Place Cam-bolt on the designated pre-drilled holes on the panel. Use a Phillips Screwdriver to screw-in Cam-bolt vertically until shoulder is flushed (on the same level) with panel. Do not over-tighten or under-tighten.

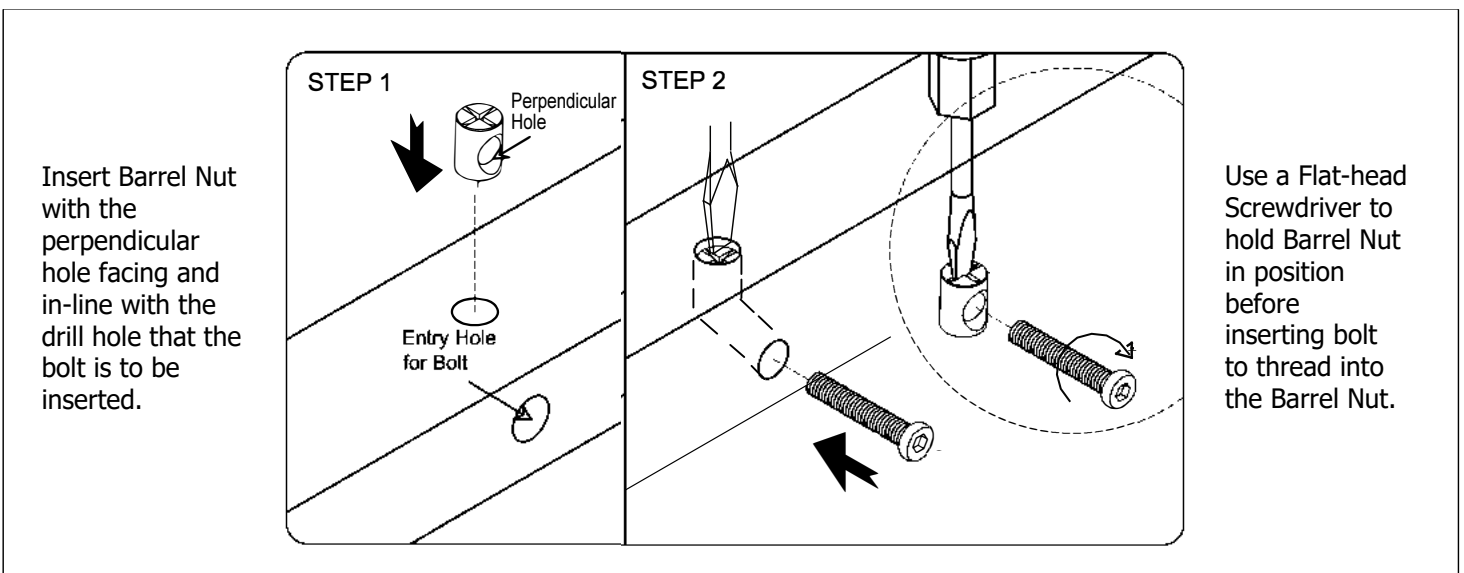


Align the arrow on the Cam-lock to the Cam-bolt head and insert the Cam-lock. Ensure inserted Cam-lock is flushed with the panel.



Use a Flat Screwdriver to turn Cam-lock clockwise so it locks onto the head of the Cam-bolt. Turn until it is snug (about one half a turn) -- over-tightening could damage Cam-lock or/and Cam-bolt.

Instructions For Installing Barrel Nut



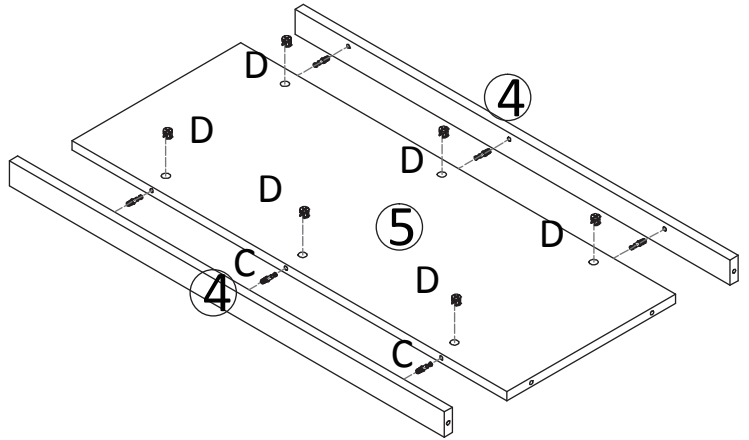
ASSEMBLY INSTRUCTIONS

Console Table

STEP 1

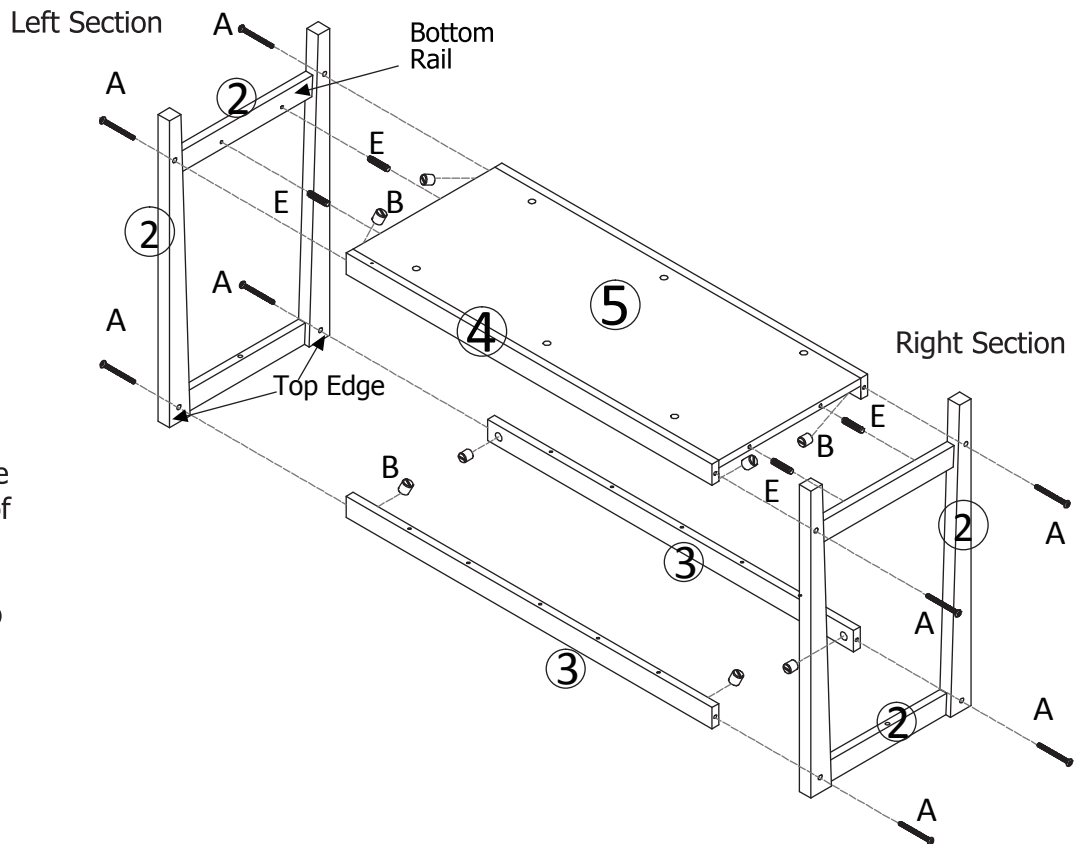
ASSEMBLE BOTTOM ASSEMBLY

- Lay Bottom Panel (5) and Bottom Rail (4) as shown. Note: the holes for Cam-lock (D) on (5) are facing up.
- Use Phillips Screwdriver to screw in Cam-bolt (C) into designated holes on (4). Refer to Page 3 for instructions to screw in and tighten Cam-bolts.
- Attach (4) to (5) by inserting Cam-bolts on (4) into designated holes for cam-bolts on the side edge of (5).
- Insert Cam-lock (D) into designated holes on (5). Use Flat Screwdriver to turn (D) clockwise to lock onto Cam-bolts. Refer to Page 3 for instructions on inserting and tightening Cam-lock.



STEP 2

- Insert Barrel Nut (B) into designated holes on Bottom Rail (4) of Bottom Assembly (from STEP 1) and Top Rail (3). Refer to Page 3 for instructions on installing Barrel Nut.
- Place a Leg Frame (2) upside down - refer to left section of drawing. Next, fasten (3) to (2) by inserting Bolt (A) through the holes on the top edge of (2) to screw into Barrel Nut (B) on (3).
- Insert Wood Dowel (E) into designated holes on both edges of (5) as shown.
- Attach Bottom Panel (5) to the bottom rail of (2) via (E). Next, fasten (4) to (2) by inserting Bolt (A) through the designated holes on the (2) to screw into the (B). Use a Phillips screwdriver to tighten (A).
- Attach second Leg Frame (2) to (5) via Wood Dowel (E) - refer to right section of drawing.
- Insert Bolt (A) through the designated holes on (2) to screw into the Barrel Nut (B) on (3) & (4). Use a Phillips screwdriver to tighten (A). Do not tighten (A) completely until all 4 bolts are in place.

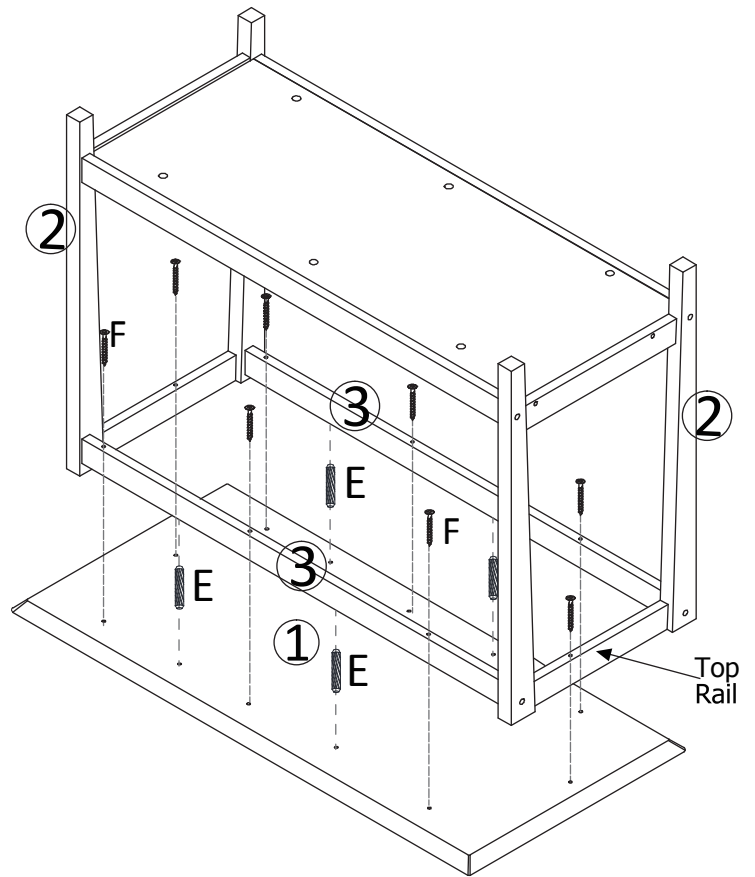


ASSEMBLY INSTRUCTIONS

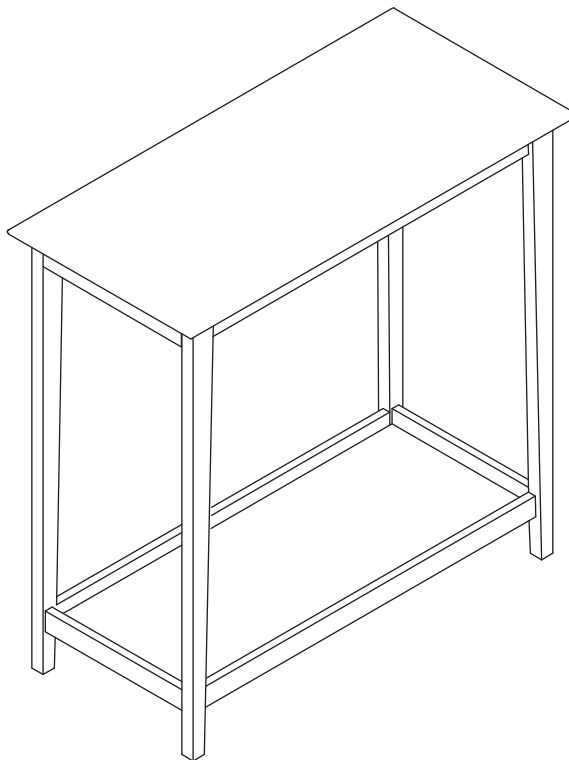
Console Table

STEP 3

- a) Lay Top Panel (1) bottom-side up on a material that does not scratch or damage the part, and insert Wood Dowel (E) into designated holes.
- b) Attach assembly from STEP 2 to (1) via wood dowels.
- c) Fasten (1) to (2 & 3) using Wood Screw (F). Use a Phillips screwdriver to drive (F). Do not tighten (F) completely until all 4 screws are in place.



STEP 4



Turn the table upright.

The assembly of the table is complete.