

**WHITE AND DEEP GREY** : BLANC ET GRIS PROFOND : *BLANCO Y GRIS PROFONDO*

**DEEP GREY AND BLACK** : GRIS PROFOND ET NOIR : *GRIS PROFONDO Y NEGRO*



## Thank you for choosing our product. Your total satisfaction is our #1 priority.

### Customer Service and warranty information

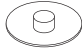

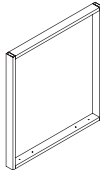
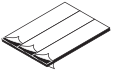
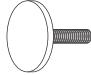

Should you have a problem or need more information concerning the warranty, **do not call to the place of purchase.**  
**Please call our customer service department for immediate assistance**

Please have your assembly instruction manual on hand when you call. Our products are warranted to the original purchaser against defects in material or workmanship in the furniture. Defects as mentioned in this warranty refer to any imperfections which may impair the use of the product. Our warranty is expressly limited to the replacement of furniture parts and components for ten years following the date of purchase. will replace any part that is defective. This warranty applies under conditions of normal use. Our furniture products are not intended for outdoor use. The warranty does not cover defects caused by improper assembly or disassembly, defects occurring after purchase due to product modifications, intentional damage, accident, misuse, exposure to the elements and labor or assembly costs. We reserve the right to request proof of purchase to document a warranty claim. In no event shall we be liable for incidental or consequent damages resulting from the misuse of the product. This warranty is not transferable and is valid only in Canada and the United States excluding Alaska, Hawaii and Puerto Rico.

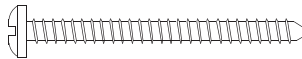
▶ PARTS / PIÈCES / PIEZAS

CODE / CÓDIGO	QTY / QTÉ / CANT.	CODE / CÓDIGO	QTY / QTÉ / CANT.	CODE / CÓDIGO	QTY / QTÉ / CANT.	CODE / CÓDIGO	QTY / QTÉ / CANT.
40	1	70	1				

▶ HARDWARES / QUINCAILLERIES / QUINCALLAS

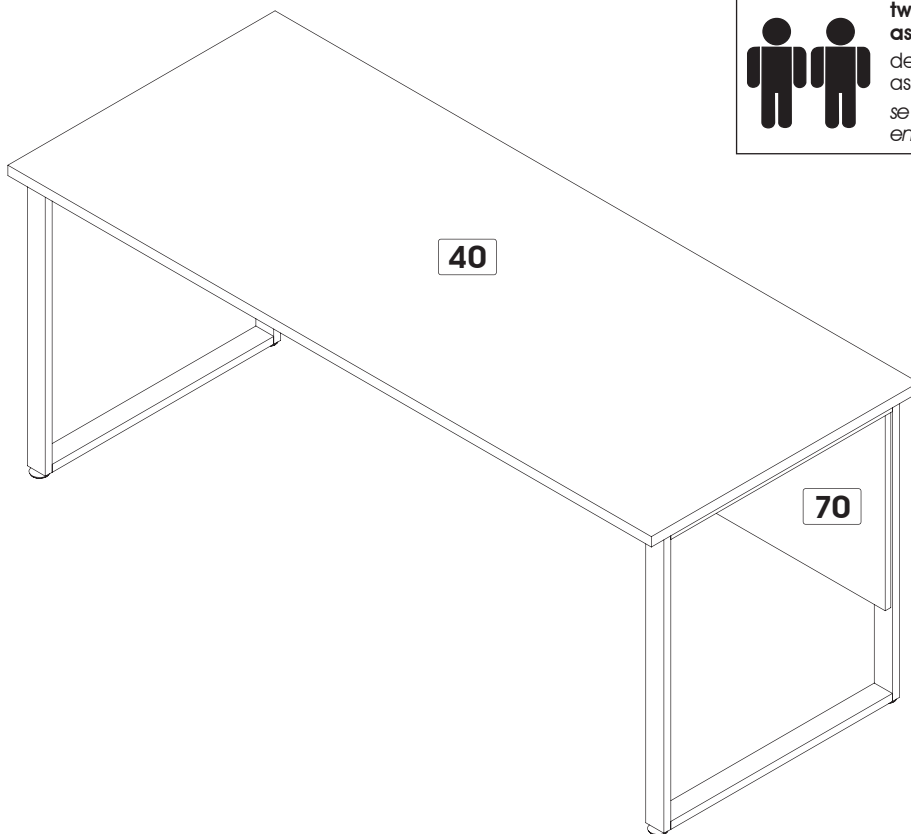
CODE / CÓDIGO	QTY / QTÉ / CANT.	CODE / CÓDIGO	QTY / QTÉ / CANT.	CODE / CÓDIGO	QTY / QTÉ / CANT.	CODE / CÓDIGO	QTY / QTÉ / CANT.
CA-99 	5	H-03 	5	PA-7559 	2	RU-420 	2
E-27 	4	H-36 	5				


▶ REAL SIZE / GRANDEUR RÉELLE / TAMAÑO REAL

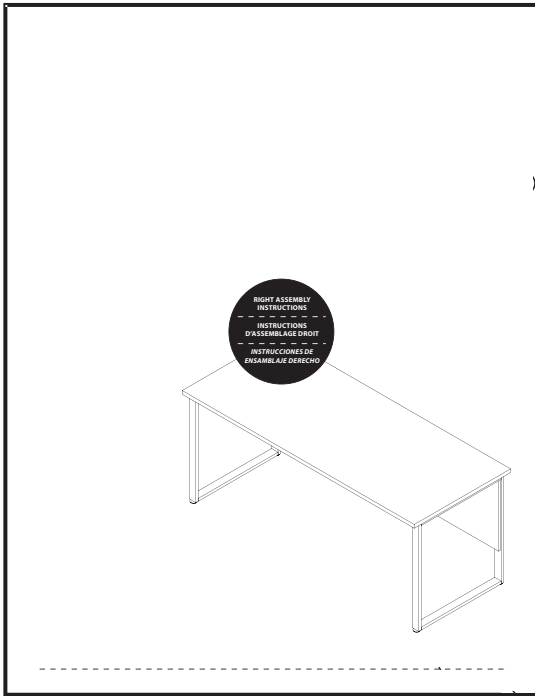
CODE / CÓDIGO	QTY / QTÉ / CANT.	CODE / CÓDIGO	QTY / QTÉ / CANT.
VR-462  1 1/2" (38 mm)	8		

▶ PROBLEMS OR INFORMATION

POUR TOUT PROBLÈME OU INFORMATION  
PROBLEMAS O INFORMACIÓN



 **two people are required to assemble and move this model.**  
deux personnes sont requises pour assembler et déplacer ce modèle.  
se necesitan dos personas para ensamblar y desplazar este mueble.



Model / Modèle: \_\_\_\_\_

**Customer Service**  
Service à la clientèle

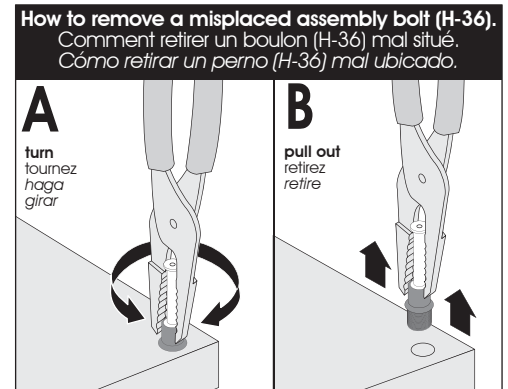
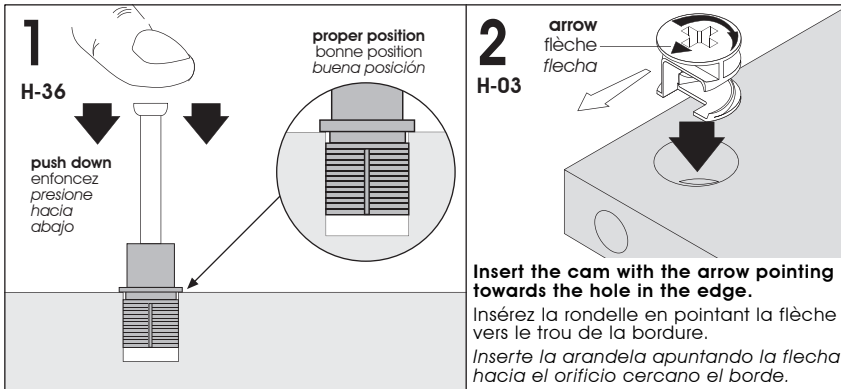
**Important/Importante**

**Please retain the self-adhesive sticker which you will install at step 4 of the instruction manual.**

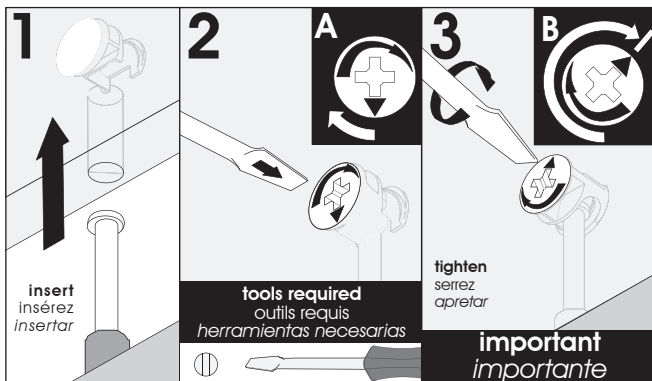
Conservez l'autocollant qui sera collé seulement à l'étape 4 du feuillet d'instructions.

Conserve la etiqueta que será pegada sólo en la etapa 4 de la hoja de instrucciones.

**Main hardware system. Installation steps / Système de quincaillerie principal. Étapes d'installation.**  
*Sistema principal de quincalla. Etapas de instalación.*



**Main hardware system. Assembly steps / Système de quincaillerie principal. Étapes d'assemblage.**  
*Sistema principal de quincalla. Etapas de ensamblaje.*



**Make sure to properly tighten each cam to ensure furniture solidity. Otherwise, parts could be damaged or the user could be injured.**

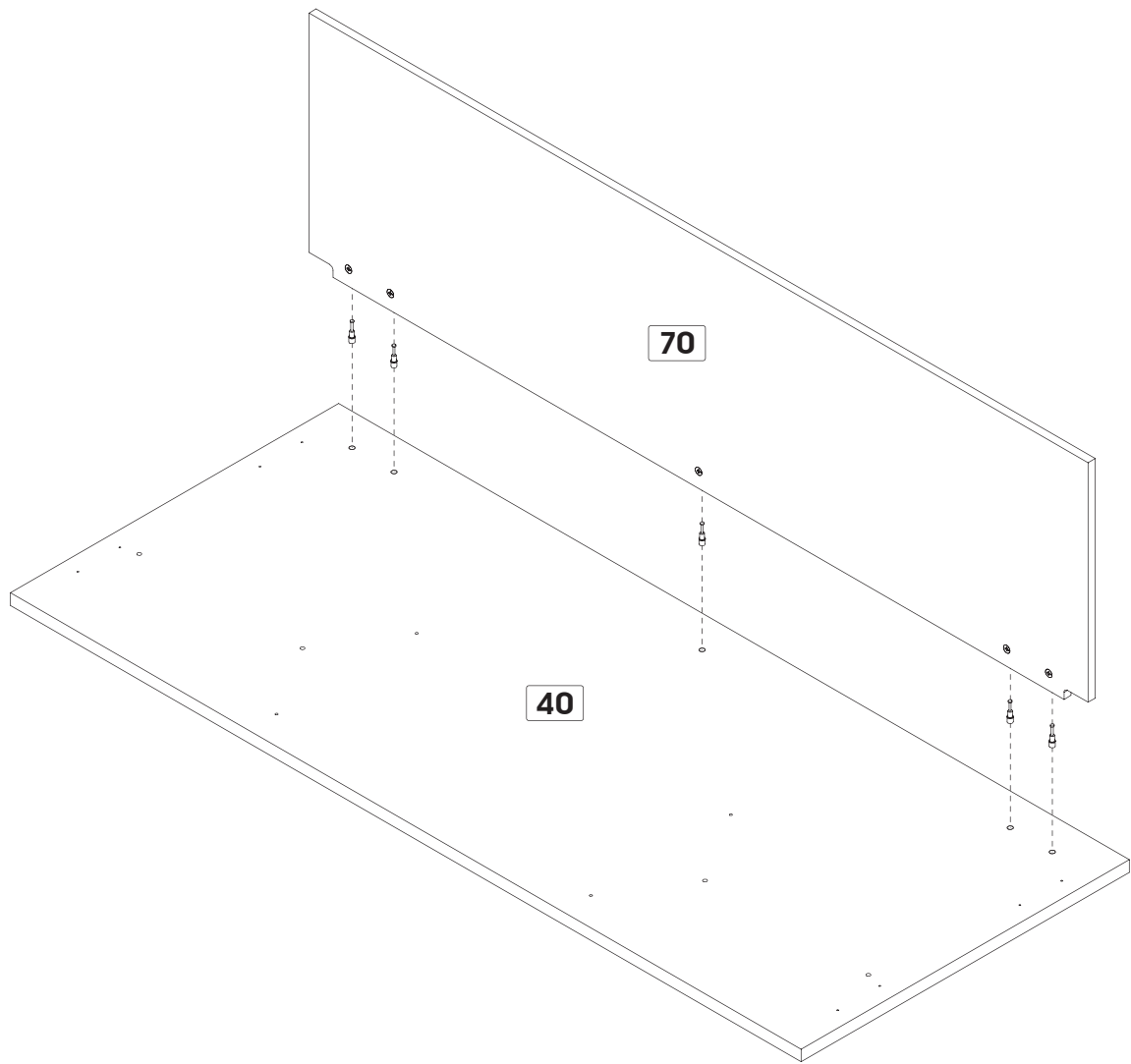
Assurez-vous de bien resserrer chaque rondelle pour assurer la solidité du meuble. Dans le cas contraire, des pièces pourraient être endommagées ou l'utilisateur pourrait se blesser.

*Asegúrese de apretar bien cada arandela para garantizar la solidez del mueble. De lo contrario, podría provocarse daño a las piezas o las personas.*

**Assembling sequence**  
 Séquence d'assemblage  
 Secuencia de ensamblaje  
**Parts / Pièces / Piezas:**



**40** **70**



**important / importante**

**A**

↑  
insert  
insérez  
insertar

**B**

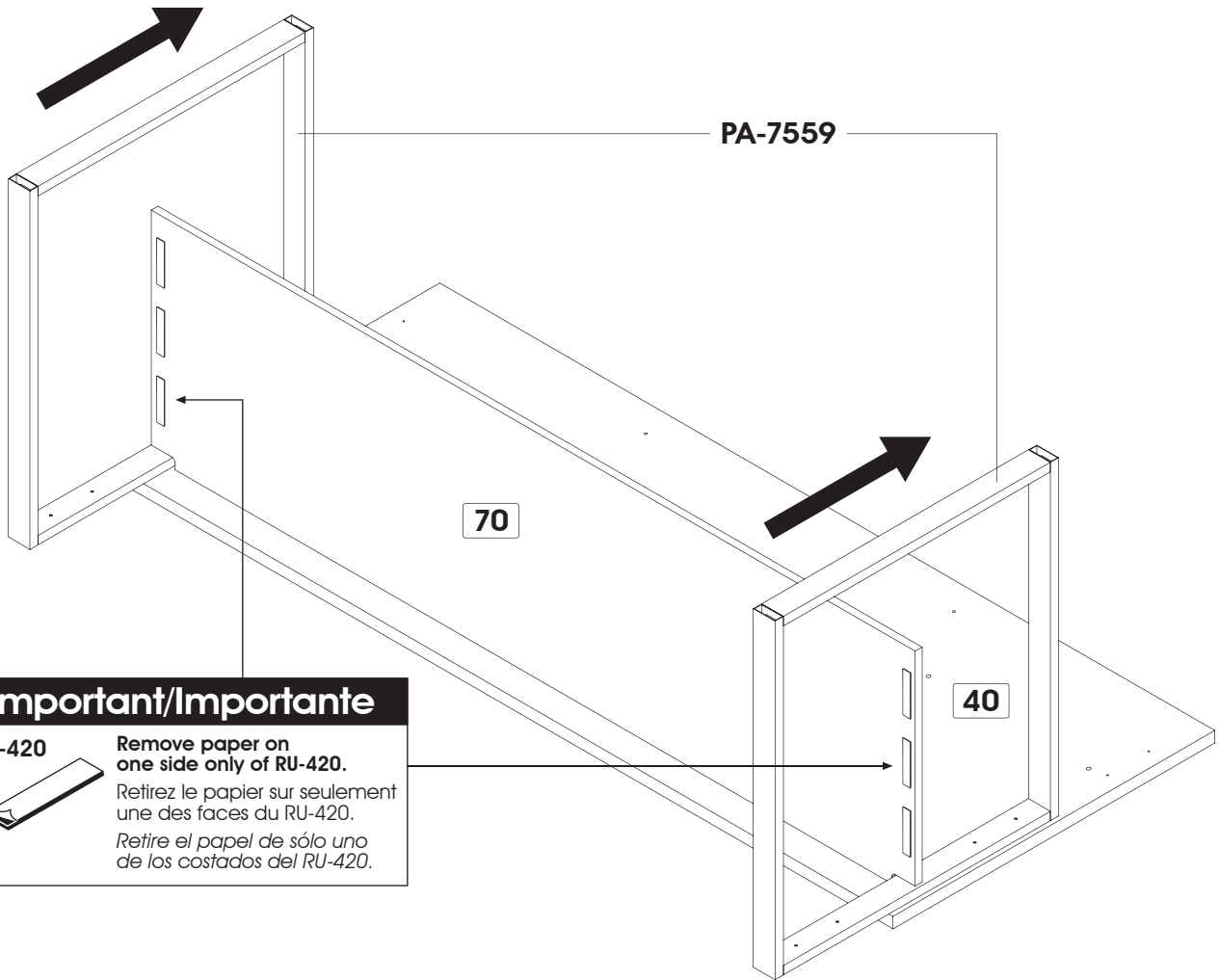
tighten  
serrez  
apretar

**1**

<b>Code / Código</b>	H-03	H-36
<b>Qty / Qté / Cant.</b>	x 5	x 5

**Assembling sequence**  
 Séquence d'assemblage  
 Secuencia de ensamblaje  
**Parts / Pièces / Piezas:**

**40 70**

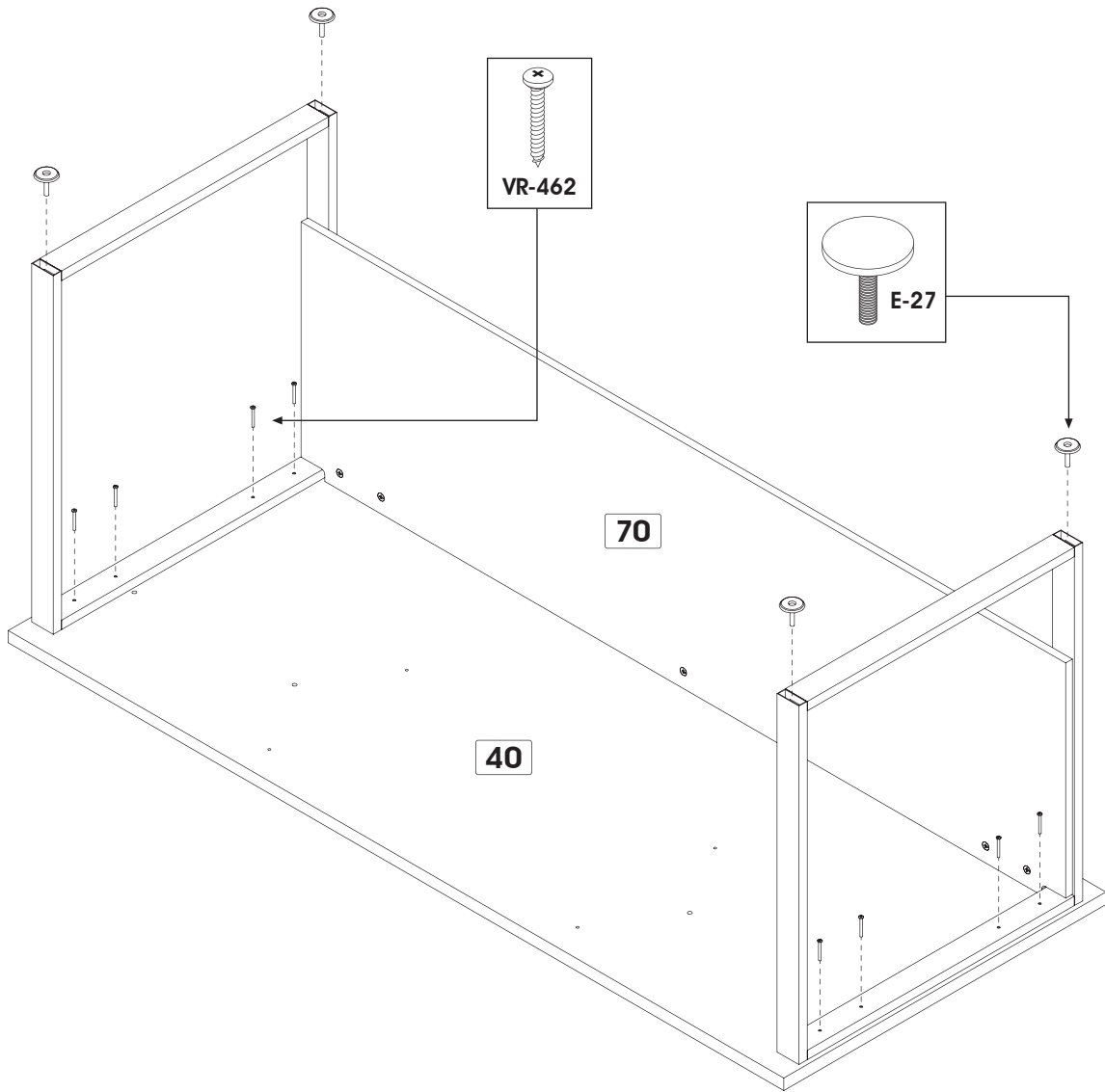


**Important/Importante**

**RU-420** Remove paper on one side only of RU-420.  
 Retirez le papier sur seulement une des faces du RU-420.  
 Retire el papel de sólo uno de los costados del RU-420.

**2**

Code / Código	RU-420	PA-7559
Qty / Qté / Cant.	x 2	x 2

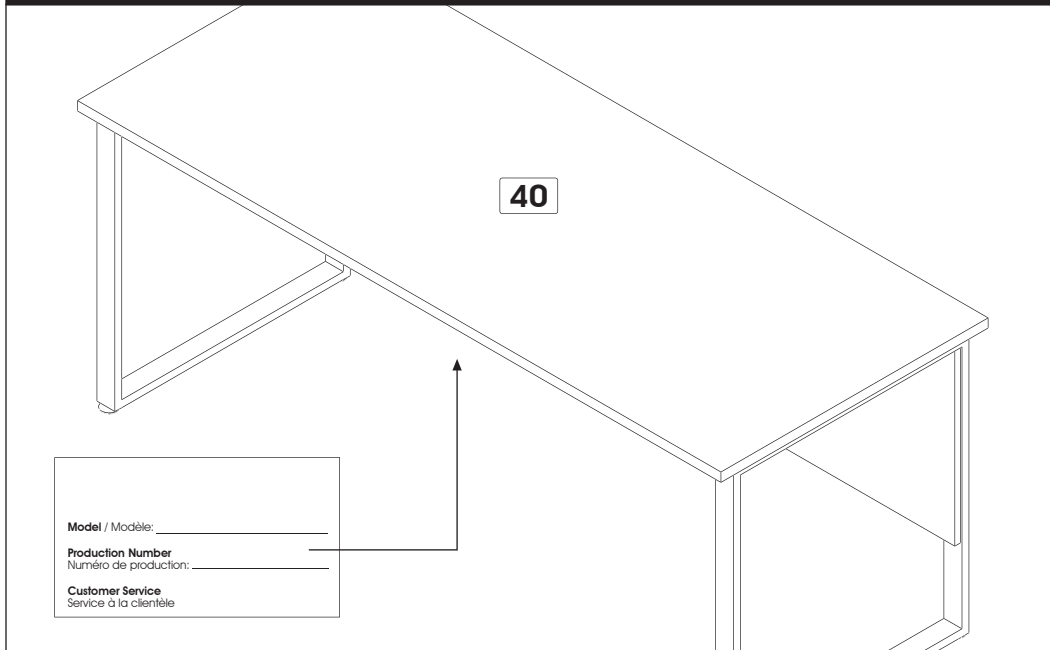


**3**

Code / Código	E-27	VR-462
Qty / Qté / Cant.	x 4	x 8

**To level your furniture, use leg levelers.**  
 Pour niveler votre meuble utilisez les pattes ajustables.  
 Para nivelar su mueble utilice las patas ajustables.

**E-27**

**Important / Importante**

**For future reference and to better serve you, please complete and apply the self-adhesive sticker in an accessible space such as under the part 40.**

Pour mieux vous servir en cas de besoin, veuillez compléter et apposer l'autocollant dans un endroit facilement accessible tel que le dessous de la pièce 40.

*Para futura referencia y mejor servicio por favor pegue la etiqueta en un lugar accesible, por ejemplo la parte inferior de la pieza 40.*

**PRODUCT CARE / ENTRETIEN DU PRODUIT / MANTENIMIENTO DEL PRODUCTO**

**Avoid placing the furniture in the sunlight or near a source of heat. Use a soft dry cloth for dusting. To clean heavy dirt, use a cloth dipped in a solution of mild detergent and water. Avoid leaving wet objects on the surface or using commercial chemical cleaning products.**

Évitez d'exposer le meuble au soleil ou près de toute source de chaleur. Pour le nettoyage, utilisez un chiffon doux et sec. Pour la grosse saleté, utilisez un chiffon humidifié avec un peu de détergent dilué dans l'eau. Évitez de laisser des objets mouillés sur la surface de votre meuble ou d'utiliser des nettoyants chimiques.

*Evite exponer el mueble al sol o las fuentes de calor. Para limpiarlo, utilice un paño suave y seco. Para limpiar las manchas rebeldes, utilice un trapo húmedo con un poco de detergente diluido en agua. No deje objetos mojados encima del mueble ni utilice limpiadores que contengan productos químicos. química.*

**CONGRATULATIONS! YOU ARE NOW THE OWNER OF A QUALITY PRODUCT**  
**FÉLICITATIONS! VOUS AVEZ MAINTENANT EN VOTRE POSSESSION UN PRODUIT DE QUALITÉ**  
**FELICITACIONES! AHORA ES USTED DUEÑO DE UN PRODUCTO DE CALIDAD.**



**For more information or to discover our new products**

Pour toute information ou pour découvrir nos nouveaux produits

Para obtener más información o para obtener nuevos productos



**FOR LONG TIME**  
POUR LONGTEMPS  
POR MUCHO TIEMPO



**OUR FURNITURE IS GARANTEED FOR 10 YEARS. NO MATTER THE PROBLEM,  
OUR CUSTOMER SERVICE IS THERE FOR YOU.**

NOS MEUBLES SONT GARANTIS POUR 10 ANS. PEU IMPORTE LE PROBLÈME,  
N'HÉSITÉZ PAS À COMMUNIQUER AVEC NOTRE SERVICE À LA CLIENTÈLE.

NUESTROS MUEBLES TIENEN UNA GARANTIA DE 10 AÑOS. NO IMPORTA EL PROBLEMA,  
COMUNIQUE CON NUESTRO SERVICIO A CLIENTE.