

INSTRUCTION MANUAL ENCLOSED

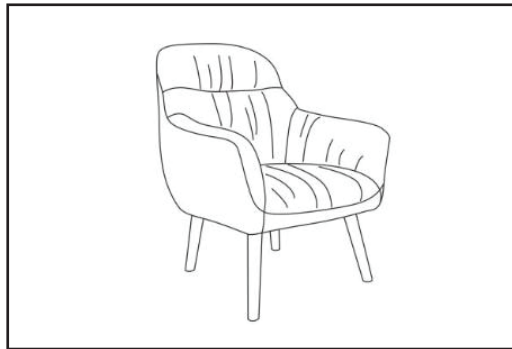
ATTENTION

IF YOU HAVE ANY PROBLEMS OR QUESTIONS, EMAIL OR CALL CUSTOMER SERVICE BEFORE YOU RETURN THIS PRODUCT TO THE STORE WHERE IT WAS PURCHASED.

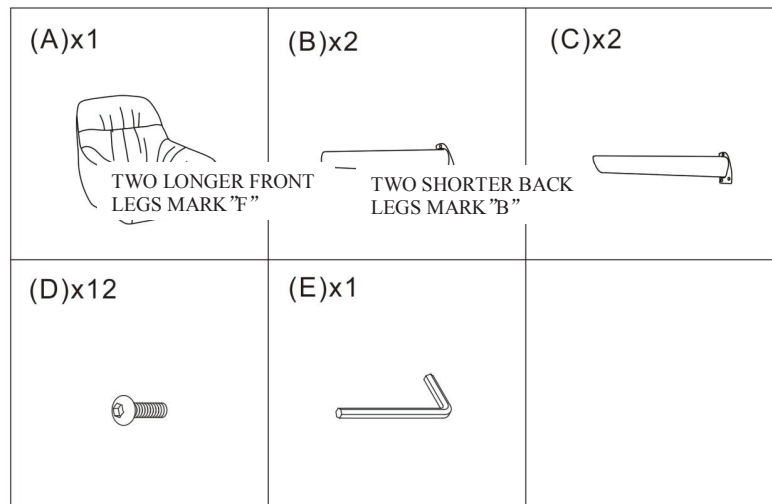
**When emailing Customer Service, please include your Order Number and platform of purchase in the email subject for quicker assistance.

INSTRUCTION MANUAL ENCLOSED

INDOOR ACCENT CHAIR INDOOR ACCENT CHAIR ASSEMBLY INSTRUCTION



Part	PARTS LIST Description	Quantity
	<i>PARTS</i>	
A	Chair Top	1
B	Front Legs	2
C	Back Legs	2
	<i>HARDWARE</i>	
D	Bolts (M6*20MM)	12
E	Allen Key (M6)	1



PLEASE READ AND FOLLOW ALL SAFETY TIPS

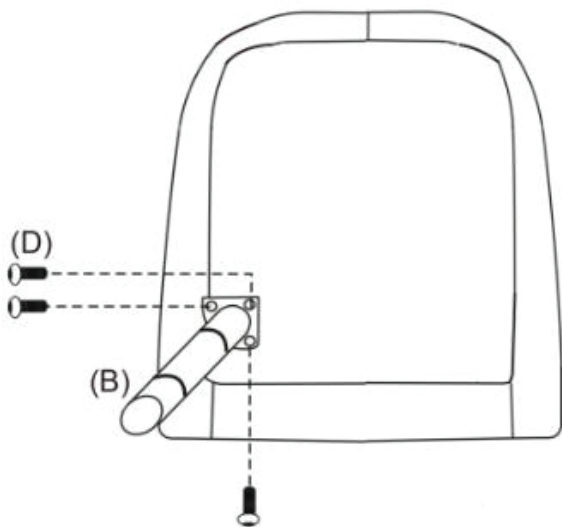
GETTING STARTED

1. Before assembly, **CAREFULLY** use scissors or utility knife to cut and unwrap all parts. Make sure you do not discard the hardware.
2. Make sure that you have all the parts listed. If you are missing any parts, please email us. Please identify the parts you need and model number. Make sure to include your name and address.
3. Please include your Order Number and platform of purchase in the email subject, and one of our customer service representative will get back to you.

Warm Tips:

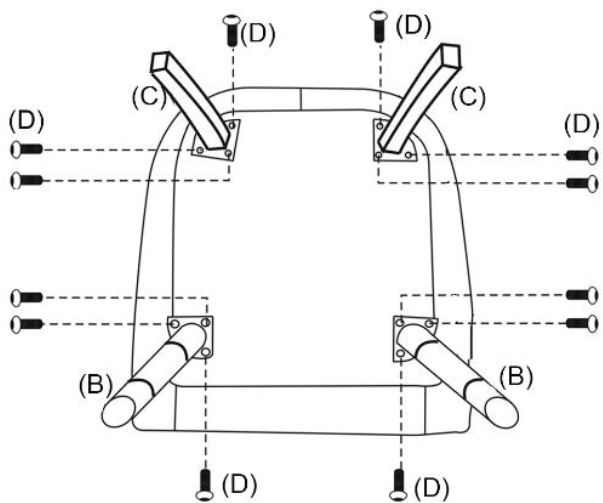
1. The plastic covers on some metal parts are just for product protection. Please remove it before assembly.
2. Please follow the sequence of AI during assembly.
3. Do not tighten the screws until all of them are in right positions.

1. Locate Front legs(B) to the Chair Top(A) by the pre-drilled threads. Use Allen Key(E) to fasten Bolts(D). Each leg should have 3 bolts fastened. (Photo 1)



---- Photo 1

2. According to the first step assemble other 3 legs.(Photo 2)



----- Photo 2

Till now you have finished the whole assembly and enjoy your furniture!