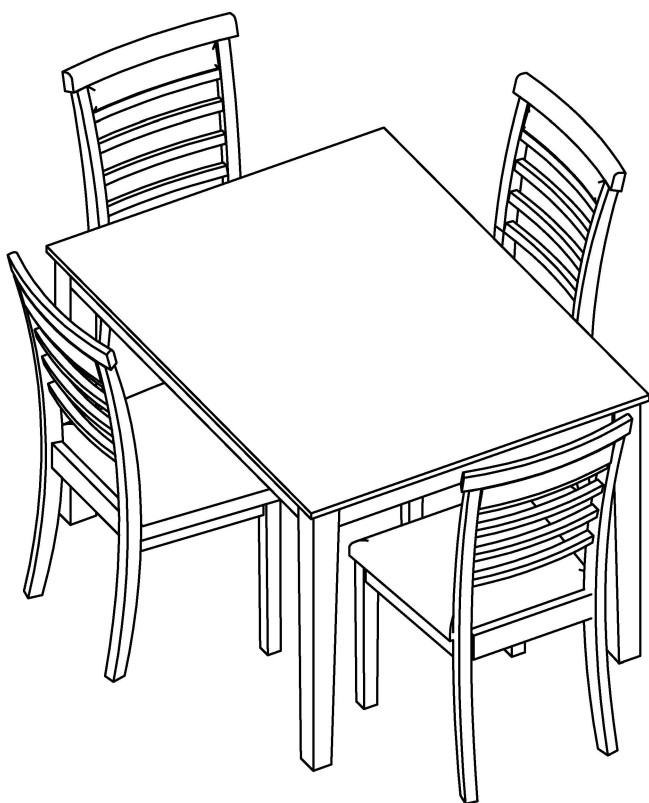


# ASSEMBLY INSTRUCTIONS



## TOOLS REQUIRED

Allen Wrench

(Included)



Phillips Screwdriver

(Not Included)



2 - People  
Recommended

## ASSEMBLY RATING



EASY-----, ◆ DIFFICULT

The Assembly Rating is a 5-point system showing the level of effort needed to assemble a specific product.

Thank you for your purchase!

We hope you enjoy this new addition to your home for many years to come.

Our commitment to providing quality products does not simply end when you purchase our product. We fully stand behind our products from start to finish.

---

### **Are you missing anything?**

Double-check all parts, hardware and accessories listed on Page 6 are accounted for.

### **Should we send any replacements?**

Are there any irregularities or flaws in the parts? We can send replacements!

### **Check out our Quick Tips!**

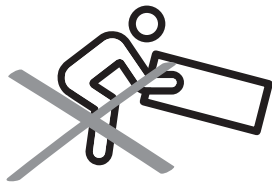
We recommend reviewing the pre-assembly handouts. Even experts need a refresher now and then!

### **Prep Time!**

Please review the assembly instructions and all diagrams prior to assembling. Arrange parts as recommended on Page 7 and group identical hardware together to make assembling easier.

# PRE ASSEMBLY INTRODUCTION

We understand building ready-to-assemble furniture can be a challenging experience for some. To help avoid confusion, we have provided some helpful tips that may speed up the process.



## Teamwork

ALWAYS have at least two people to help with transporting and assembling the product to avoid potential injury and/or damage.



## Suitable Location

Assembling near the area of the intended location is highly recommended.



## Sufficient Space

Make sure you have enough space to move around during the assembly.



## Avoid Scratches

Use cardboard, blankets or a carpeted area while assembling furniture to prevent scratches.



## Flat Surface

Make sure the furniture rests on a flat and level surface with each leg evenly touching the floor.

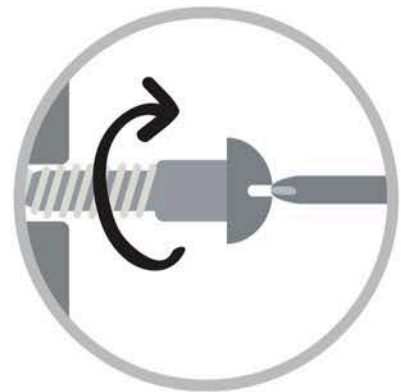
# ASSEMBLY AND CARE ADVICE



**FAILURE TO FOLLOW THE GUIDELINES BELOW MAY RESULT IN INJURY AND/OR PROPERTY DAMAGE.**



Position each part correctly and insert screws or bolts into their respective holes.



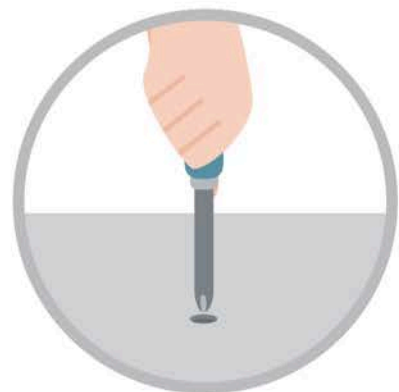
Turn clockwise to tighten and only tighten when step is completed or when instructed to do so.



Use the appropriate hand tools or power tools for assembly. Select steps, such as tightening screws and/or bolts, may require hand tools to avoid causing damage during assembly.



Save the instructions and store any supplied tools for later maintenance.



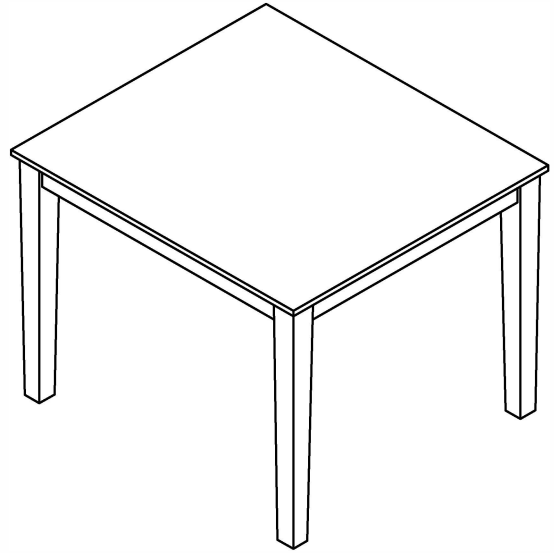
After two weeks, check and tighten any loose hardware and repeat again every six months thereafter.

**IT IS THE USER'S RESPONSIBILITY TO MAINTAIN THE FURNITURE. THE HARDWARE MAY LOOSEN OVER TIME AND MAY CAUSE THE FURNITURE TO BE WOBBLY AND UNABLE TO SUPPORT ITS INTENDED WEIGHT CAPACITY. THIS MAY LEAD TO COLLAPSE AND MAY CAUSE SERIOUS INJURY.**

# TABLE



- Please keep instructions for future reference.
- Check the quantity and irregularity of parts and hardware before you start.



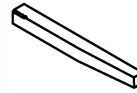
## PARTS

1pc



Table Top

4pcs



Leg

## HARDWARE

8pcs



Bolt 05/16" x 2-5/8"

8pcs



Lock Washer 05/16"

8pcs

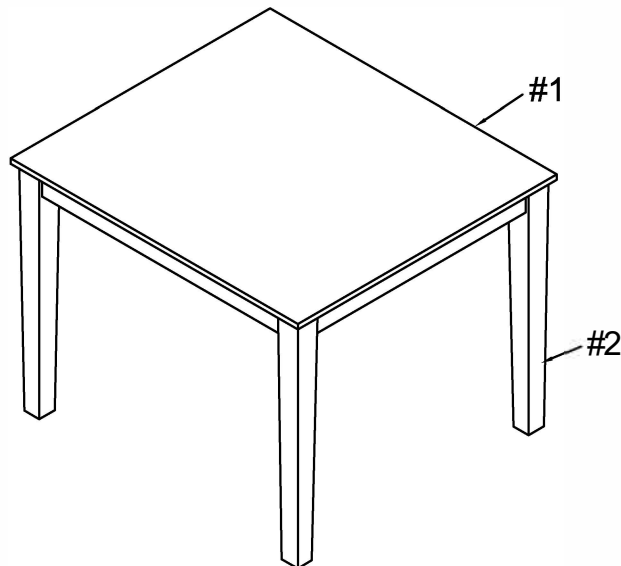


Flat Washer 05/16"

1pc



Allen Wrench M4

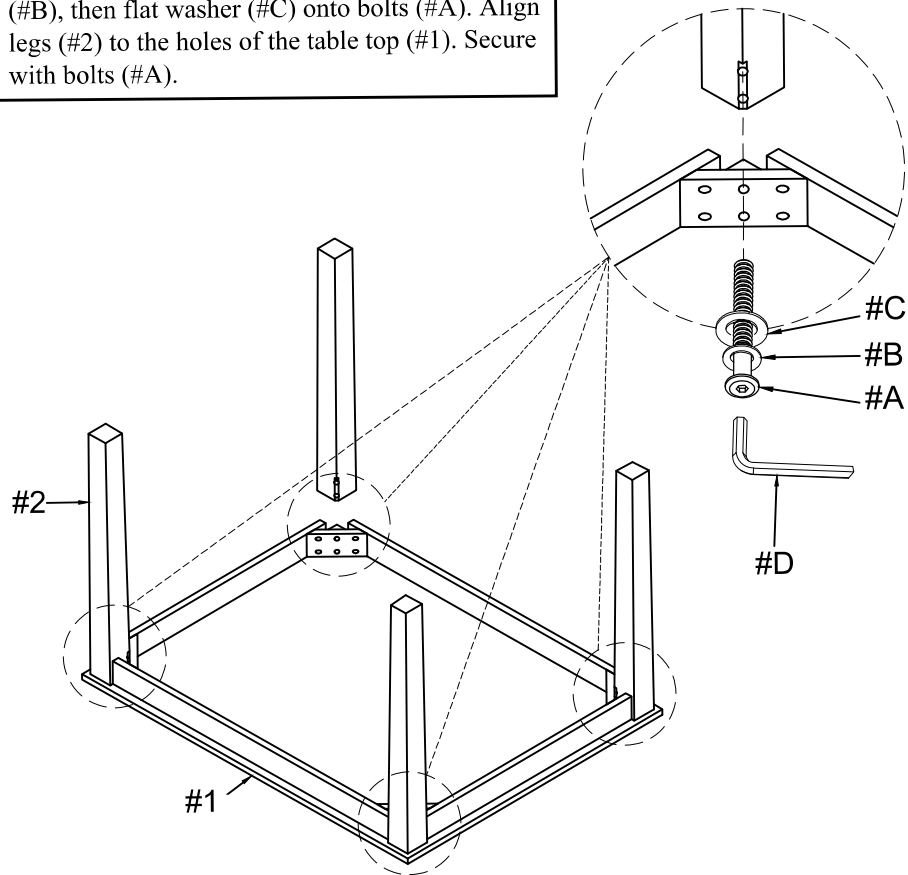


# ASSEMBLY INSTRUCTIONS

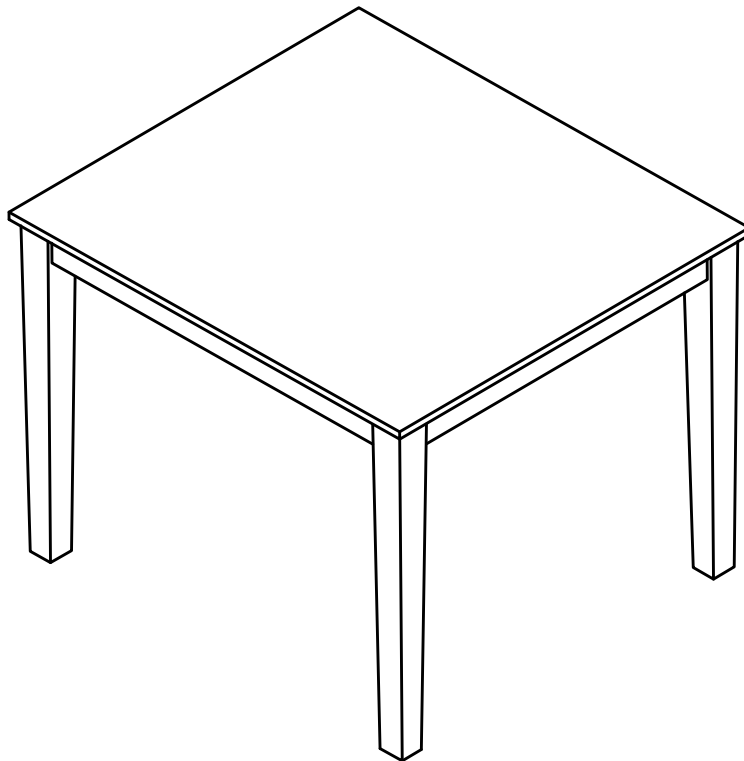
## 1

- Part #1 x1pc
- Part #2 x4pcs
- Hardware #A x8pcs
- Hardware #B x8pcs
- Hardware #C x8pcs

Prepare 8 bolts assembly by inserting lock washer (#B), then flat washer (#C) onto bolts (#A). Align legs (#2) to the holes of the table top (#1). Secure with bolts (#A).



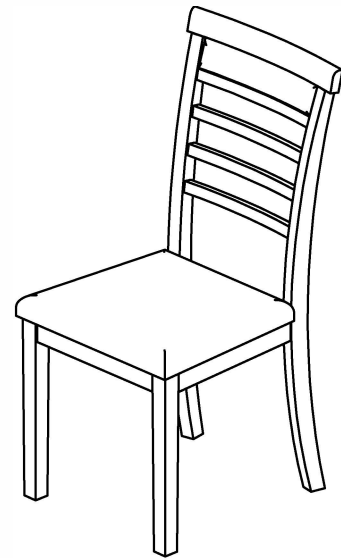
## 2



# CHAIR



- Please keep instructions for future reference.
- Check the quantity and irregularity of parts and hardware before you start.



## PARTS

(a) 1pcx4



Chair Back

@ 1pcx4



Cushion Seat

@ 2pcsx4



Front Leg

## HARDWARE

(a) 2pcsx4



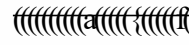
Bolt 01/4" x 1-1/2"

(a) 4pcsx4



Bolt 01/4" x 2-3/8"

(a) 4pcsx4



Bolt 01/4" x 3"

(a) 10pcs x4



Lock Washer 01/4"

(a) 10pcsx4



Flat Washer 01/4"

(a) 1pcx4

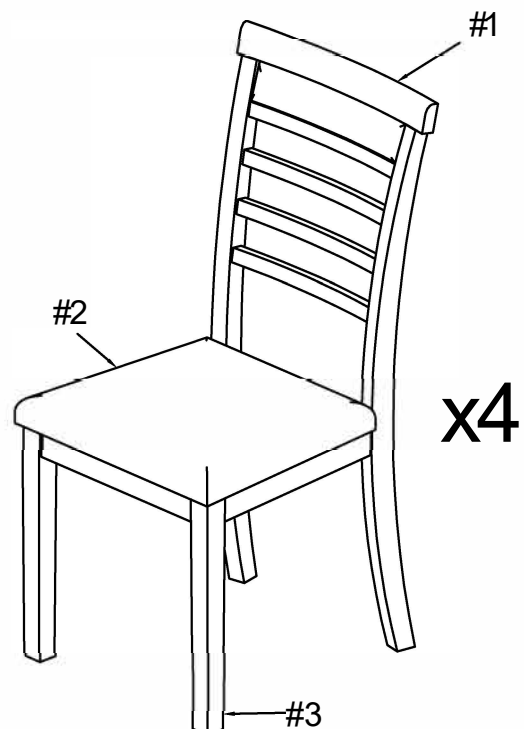


Allen Wrench M4

(R) 1pc x4



Wood Dowels 8x30MM



# ASSEMBLY INSTRUCTIONS

## 1

Part #1 x1pc

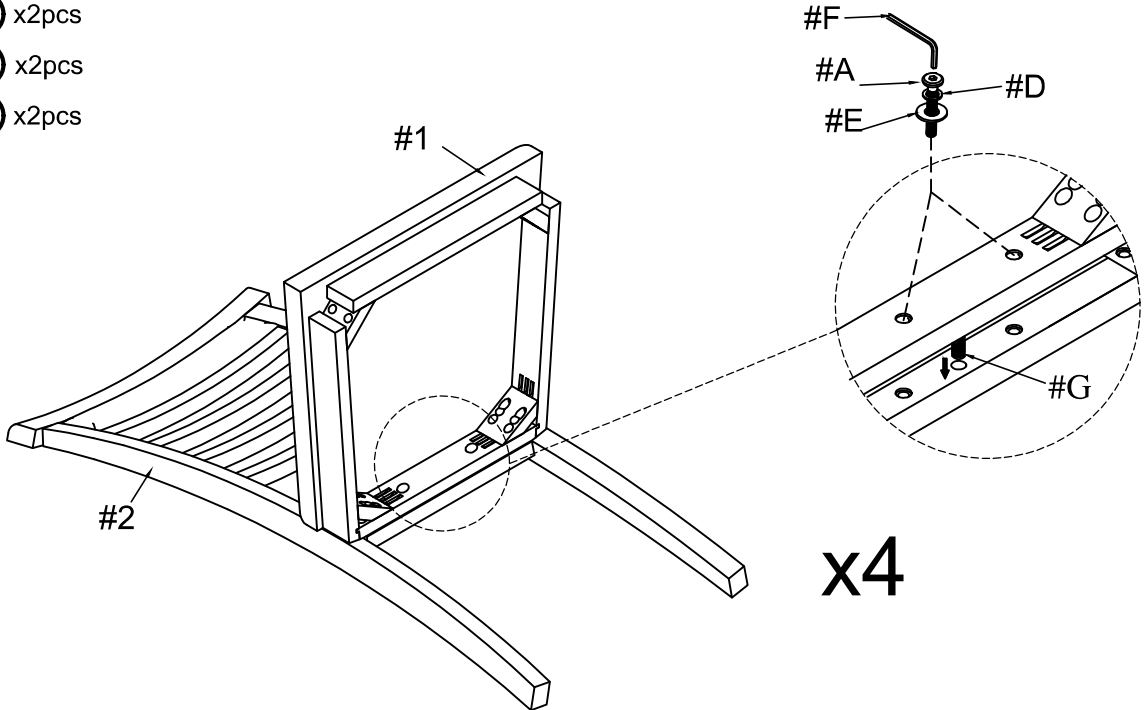
Part #2 x4pcs

Hardware #A x2pcs

Hardware #D x2pcs

Hardware #E x2pcs

Prepare 2 bolts assembly by inserting lock washer (#D), then flat washer (#E) onto bolts (#A). Insert dowel (#G) to the center hole of the chairback (#1). Align the seat (#2) to the holes of the chairback (#1). Secure seat (#2) to chairback (#1) with bolts (#A), but do not fully tighten.



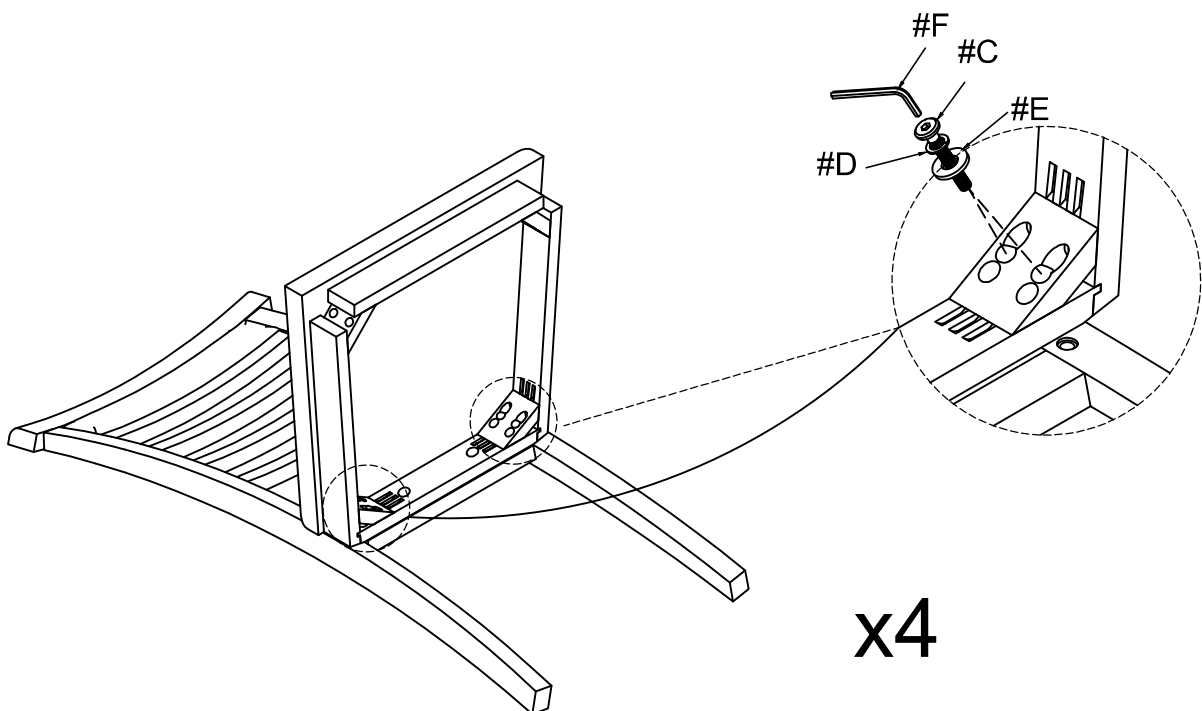
## 2

Hardware #C x4pcs

Hardware #D x4pcs

Hardware #E x4pcs

Prepare 4 bolts assembly by inserting lock washer (#D), then flat washer (#E) onto bolts (#C). Secure corner holes of the seat (#2) to the chairback (#1) by using bolts (#C). Fully tighten all bolts.



# ASSEMBLY INSTRUCTIONS

## 3

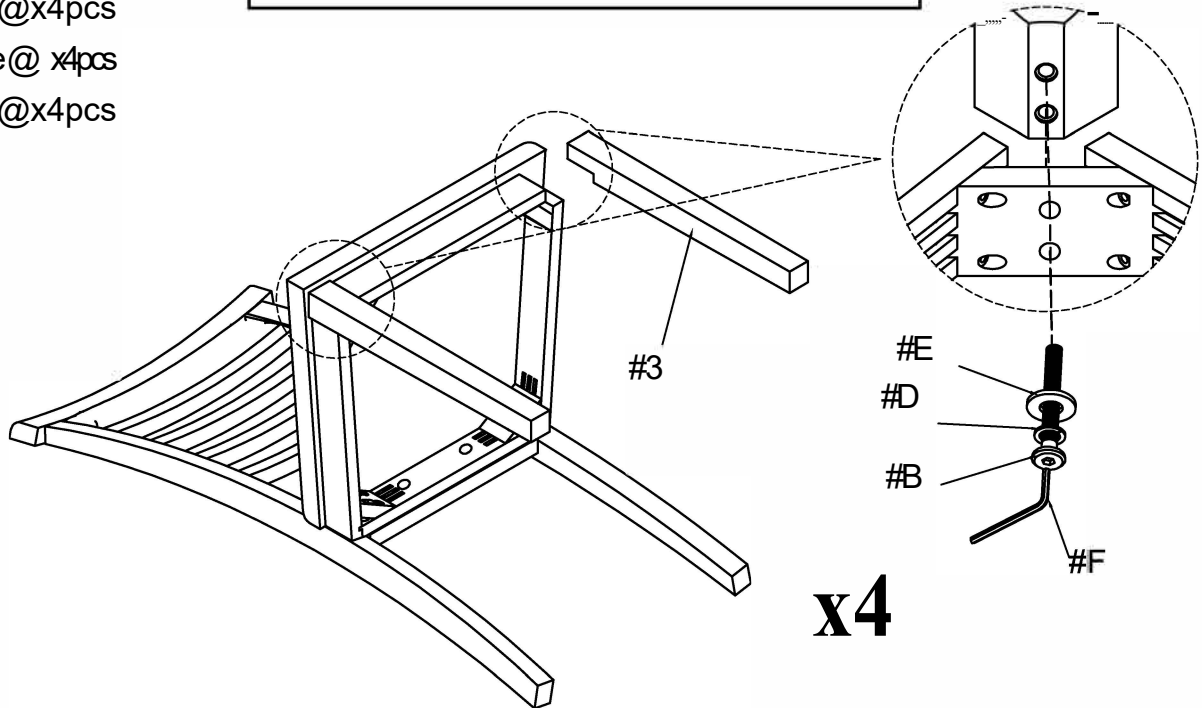
Part@x2pcs

Hardware@x4pcs

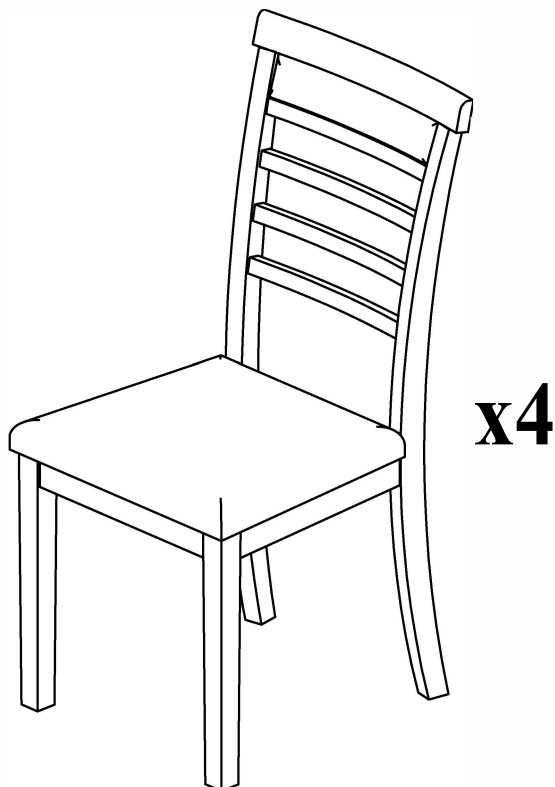
Hardware@ x4pcs

Hardware@x4pcs

Prepare 4 bolts assembly by inserting lock washer (#D), then flat washer (#E) onto bolts (#B). Align front legs (#3) to the holes at the front of the seat (#2). Secure with bolts (#B).



## 4



## ASSEMBLY COMPLETED



Please ensure the furniture rests on an even and flat surface. If the product wobbles or falls, double-check all bolts and/or screws are properly tightened and secured.

### Q) Keep this handy!

Please retain this instruction manual and any order-related information for future reference.

### L) Lift, don't drag!

To avoid damage, please always LIFT the furniture when moving it to its final placement.