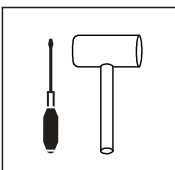


00:30

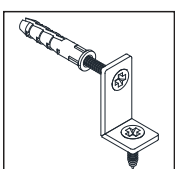
Approx. 30 minutes



Recomm. 2 Person

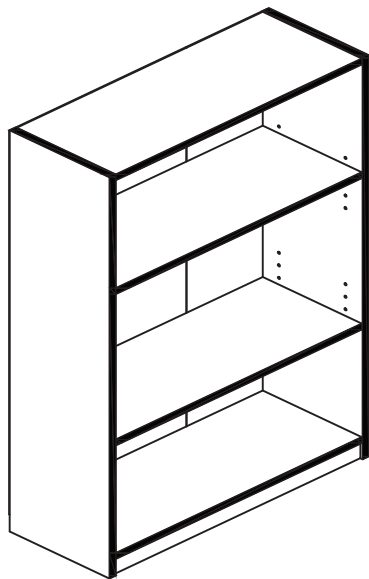




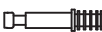
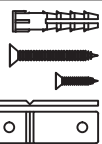



Tool Required










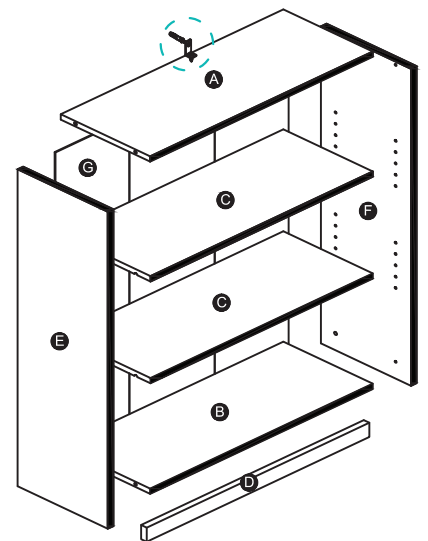
Wall Plug

## Assembly Instruction



No	Hardware List	Qty
1	Small Screw 	4pcs
2	Mini Fix Cam 	8pcs
3	Mini Fix Bolt 	8pcs
4	Wall Mounting Set 	1set
5	Shelving Support 	8pcs
6	L Bracket 	2pcs
7	Power Pin 	28pcs

No	Parts List	Qty
A	Top Panel 	1pc
B	Bottom Panel 	1pc
C	Shelf Panel 	2pcs
D	Bottom Bar 	1pc
E	Left Side Panel 	1pc
F	Right Side Panel 	1pc
G	Back Panel 	1set

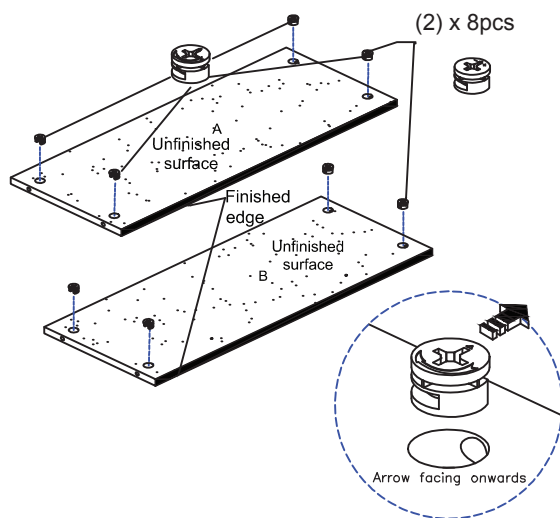


### USEFUL HINTS BEFORE YOU START:

1. Read each step carefully before starting.
2. It is important that each step is performed in correct order to avoid difficulties.
3. Identify, sort and count the parts before assembly.
4. Assemble your furniture on packaging cardboard to prevent scratch or damage.
5. Clean the product with mild cleanser using soft damped cloth. Do not use harsh or abrasive cleanser.
6. Using incompatible hardware might cause damage to product.

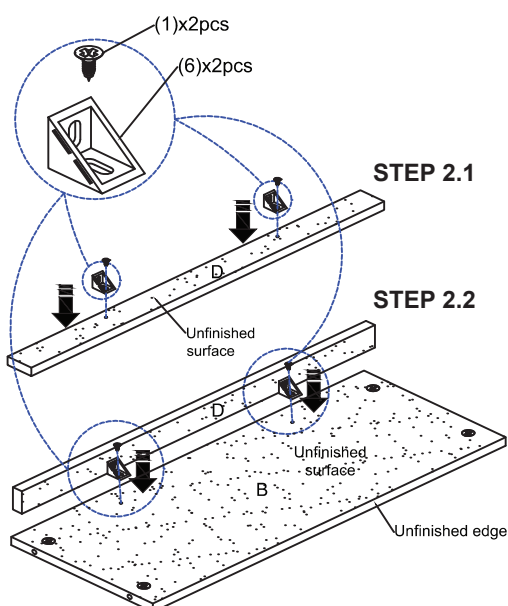
### STEP 1

Insert Mini Fix Cam (2) to Panel (A&B), as shown.



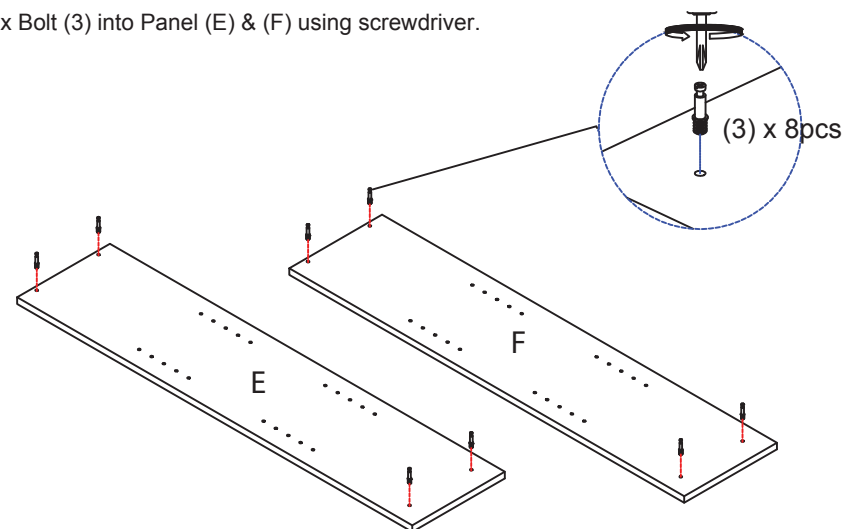
### STEP 2

- 2.1 Install L Bracket (6) to Bar (D) with Small Screw (1).  
2.2 Attach assembled unit to Panel (B) with Small Screw (1).



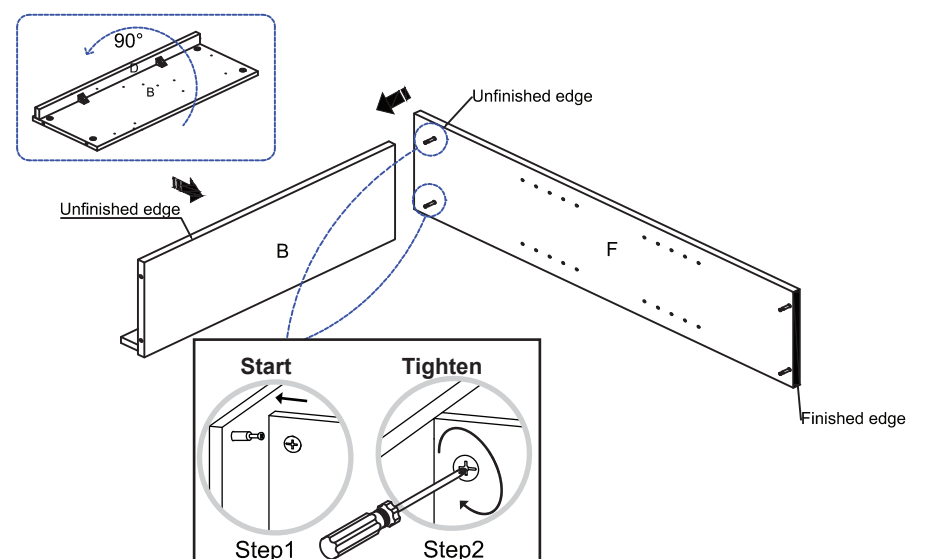
### STEP 3

Insert Mini Fix Bolt (3) into Panel (E) & (F) using screwdriver.



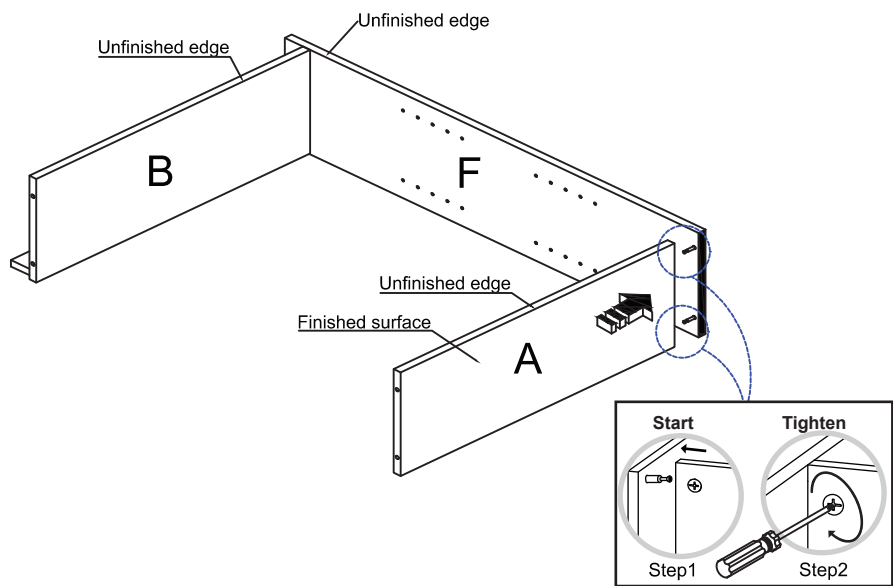
### STEP 4

Attach Panel (F) to assembled unit in Step 2, as shown.



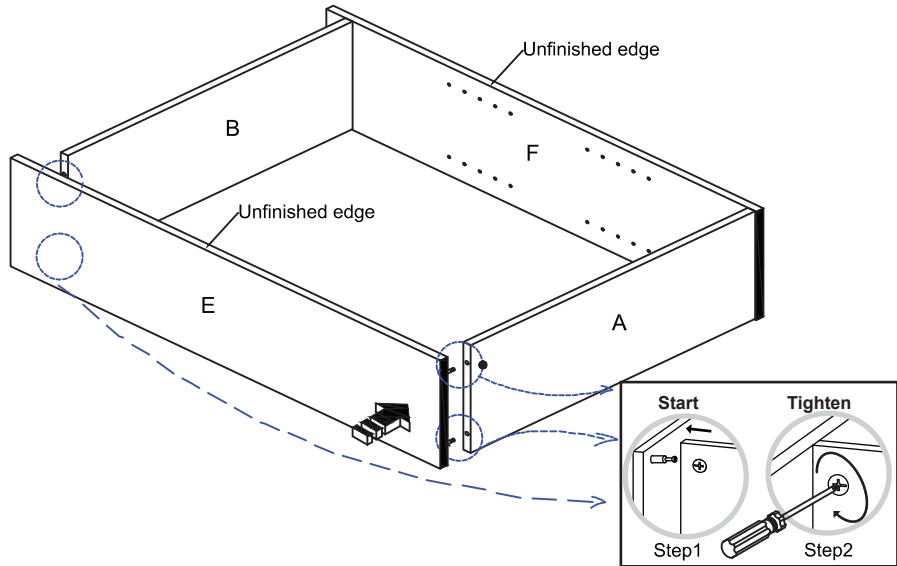
STEP 5

Attach Panel (A) to Panel (F), as shown.



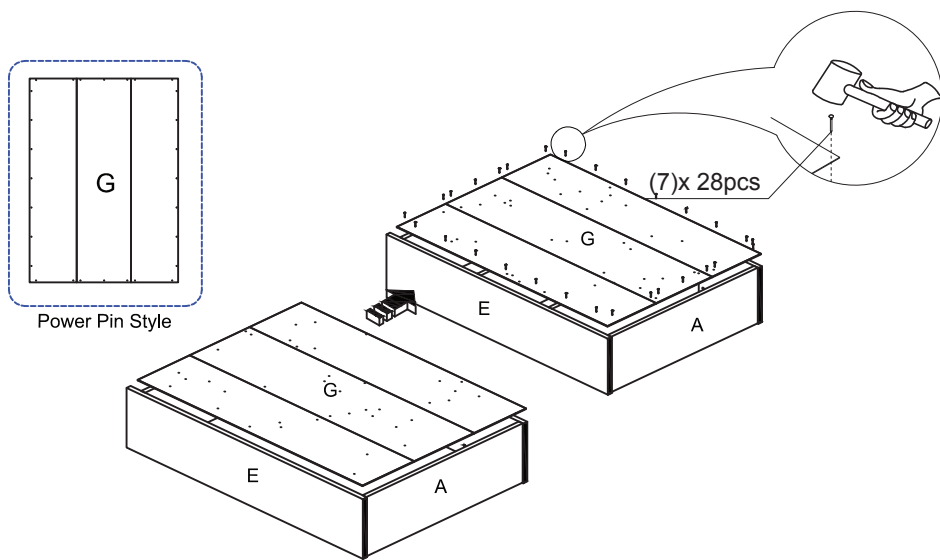
STEP 6

Attach Panel (E) to Panel (A&B), as shown.



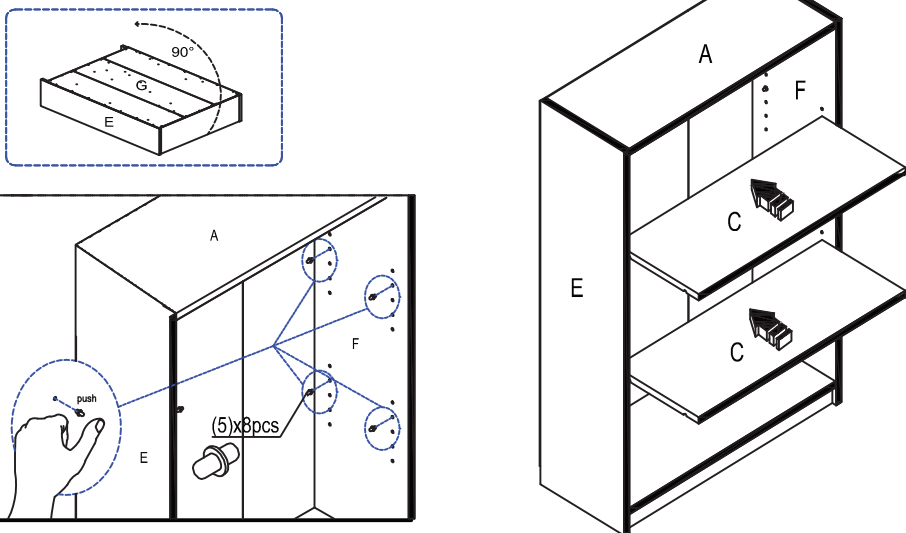
STEP 7

Attach Panel (G) to the back of the assembled unit using Power Pin (7).



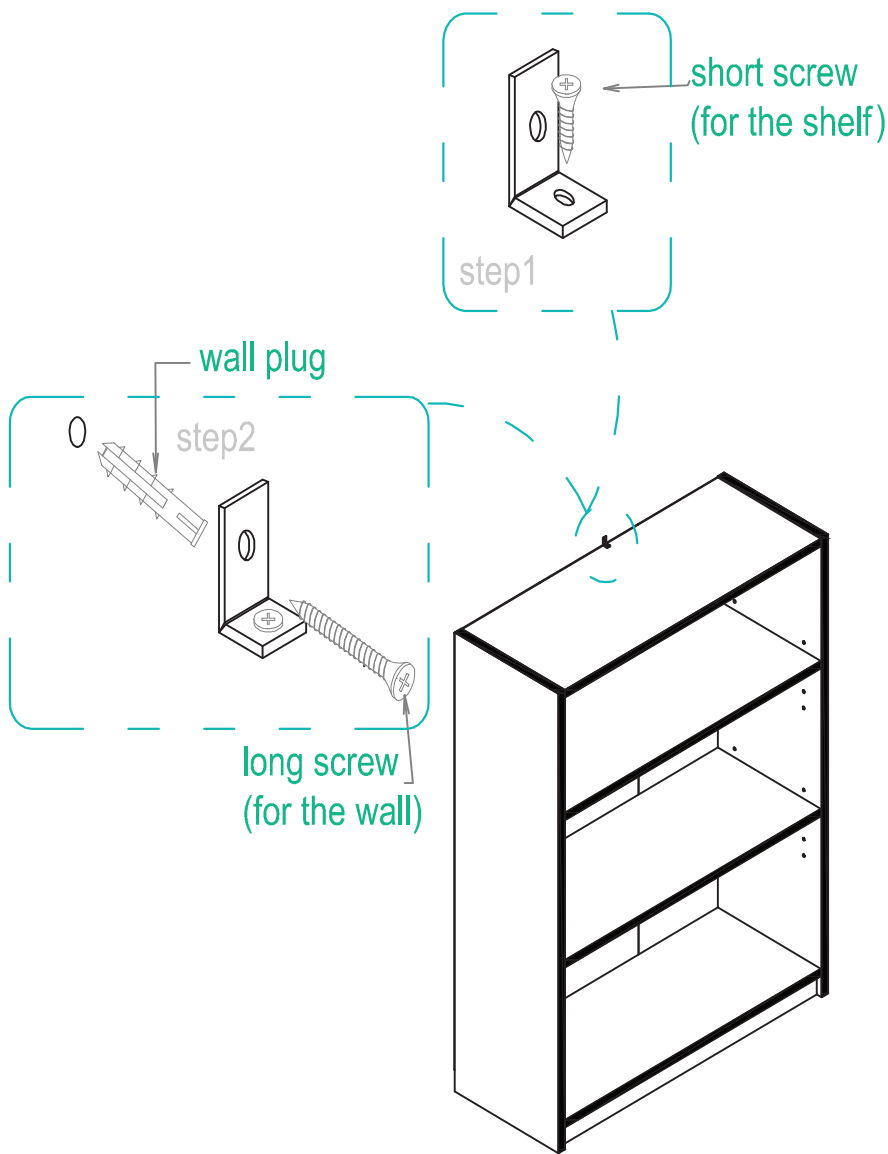
STEP 8

- 8.1 Insert Shelving Support (5) to the pre-drilled holes on Panel (E&F).  
8.2 Insert Shelf Panel (C) to the unit, as shown.

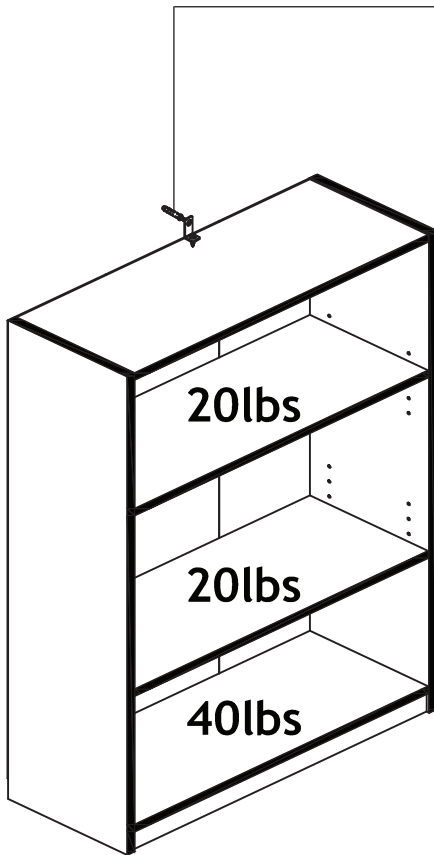


STEP 9

Fix the unit to the wall using Wall Mounting Set (4) to prevent unit from falling.



Recommended Maximum Weight



**IMPORTANT:** In order to prevent product tip over, please secure the unit to the wall.

**WARNING:**

>This unit has been designed to support the maximum loads shown. Exceeding these load limits could cause sagging, instability, product collapse, and/or serious injury.

>DO NOT allow children to climb on unit.

>Put heavier items on lower shelves.