

SLIDING DOORS ASSEMBLY INSTRUCTIONS

IMPORTANT

Please read carefully


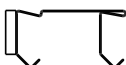




Protect your eyes when handling metal parts, wear safety goggles

Follow all steps in order and complete each step before starting the next step.

✉ Dooraftersale@gmail.com

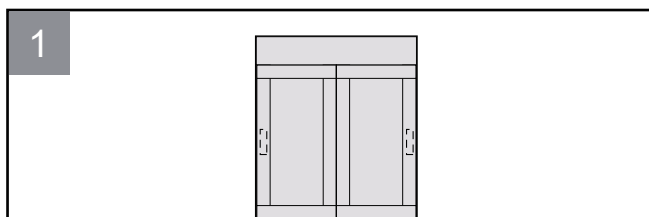


What's Included

Fascia  (x1)	Top Track  (x1)	Top Connectors  #1 (x2) #2 (x2) (x8)
Door Bumper  (x8) (x2)	Floor Guide  (x1) Place the plastic plug at this position	Handles  (x2) (x8)

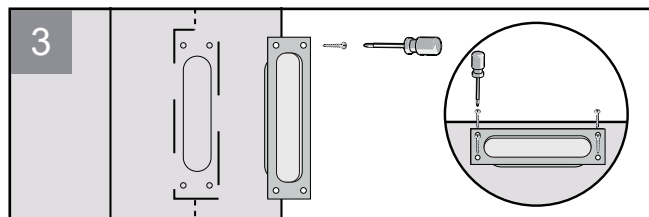
Handle Installation (Optional)

Step 1



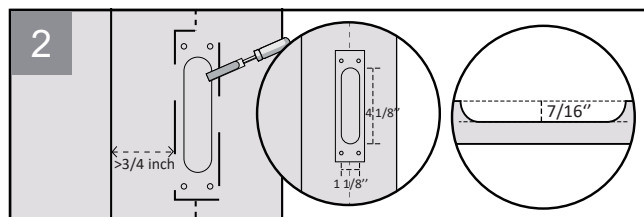
Install the handles before hang the door.

Step 3



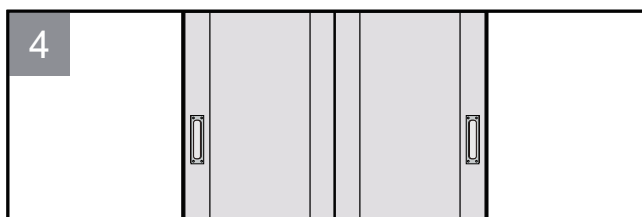
Fasten the handles with screws.

Step 2



Groove 7/16" deep hole at desired height.

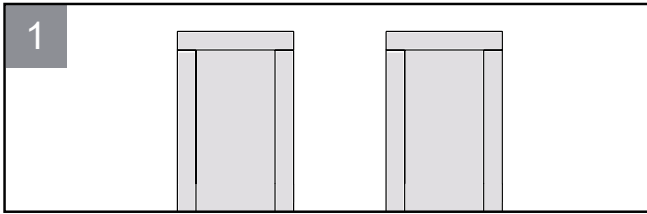
Step 4



The installation was successful.

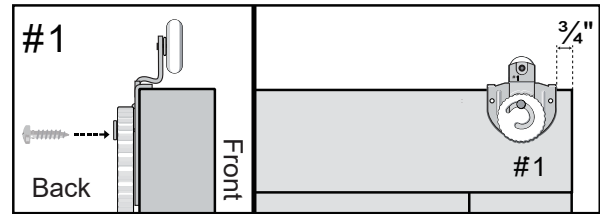
Door Installation Steps

Step 1

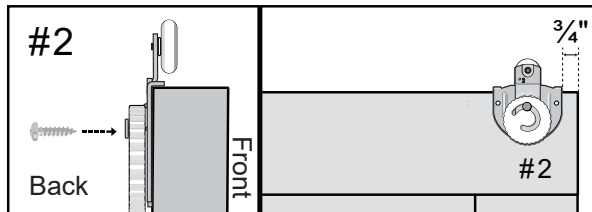


Tow slabs are identical.

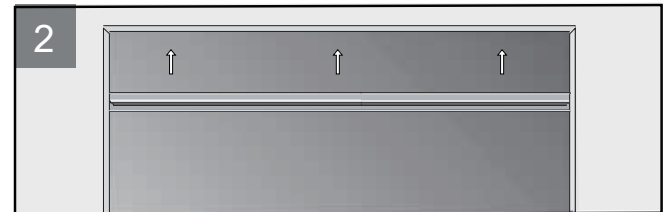
Step 1.1



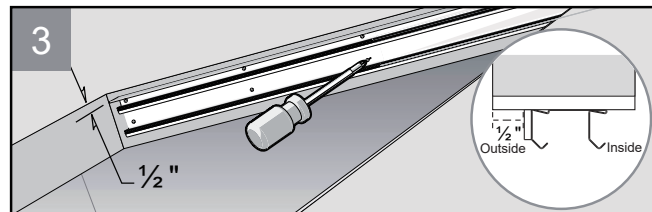
Step 1.2



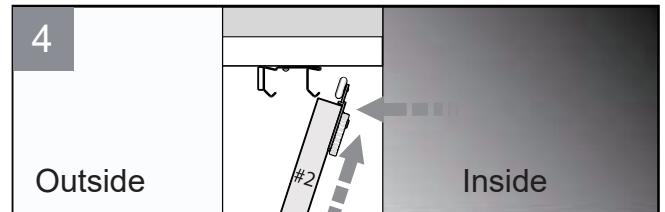
Step 2



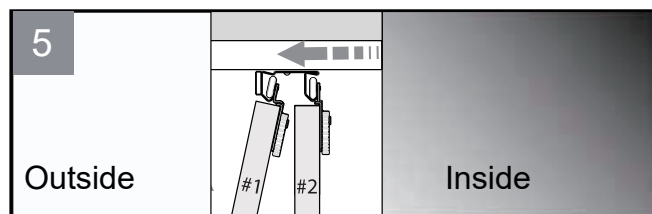
Step 3



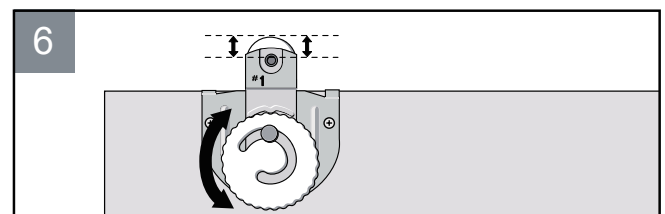
Step 4



Step 5

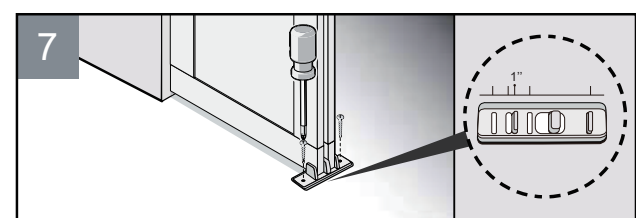


Step 6



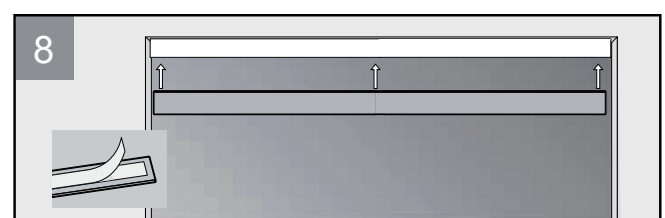
Rotate to adjust door up or down.

Step 7



Place the plastic plug at this position

Step 8



Adhere the Fascia to the track