



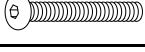

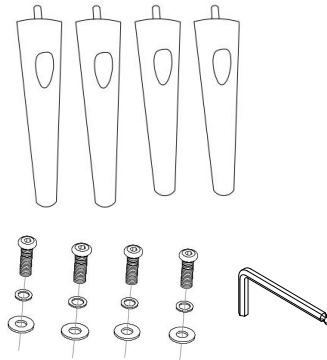
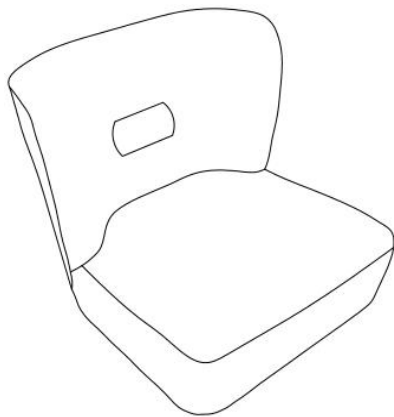


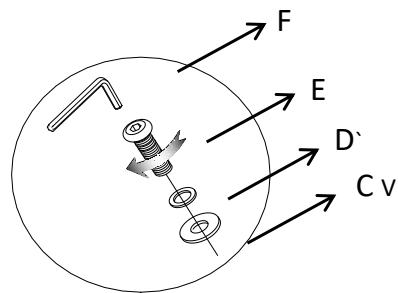
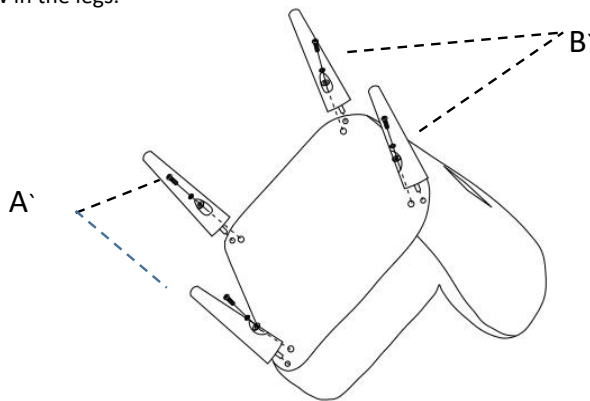
# ASSEMBLY INSTRUCTION

PARTS #	Description		QTY
A	Front Legs		2
B	Back Legs		2
C	Flat Washer		4
D	Flash Washer		4
E	Long Bolt		4
F	Allen Key		1

1. Take out the legs. Please take note: On the bottom of the legs, there is a label indicating "front leg" or "back leg".



2. Screw in the legs.



3. Level the chair and place it upright on a level surface. Please note: To level the chair, you may need to add or remove washers from the appropriate legs.

