

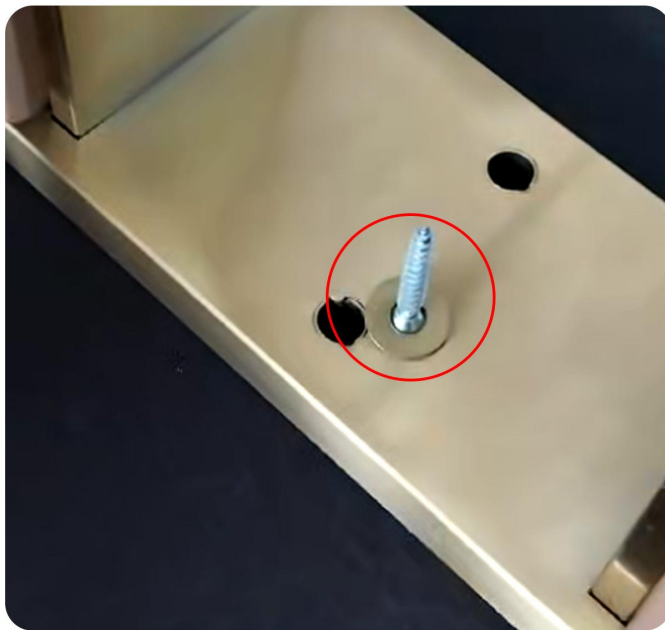
INSTALLATION INSTRUCTIONS



INSTALLATION STEPS

Step1

First, install the table legs. Locate the long screws and align the holes to secure them in place.



INSTALLATION STEPS

Step2

Find the short screws and the black triangular pegs, align the holes and fix them in place.



INSTALLATION STEPS

Step3

Then install the baffle. After aligning the baffle, fix both sides with screws. Installation completed.

