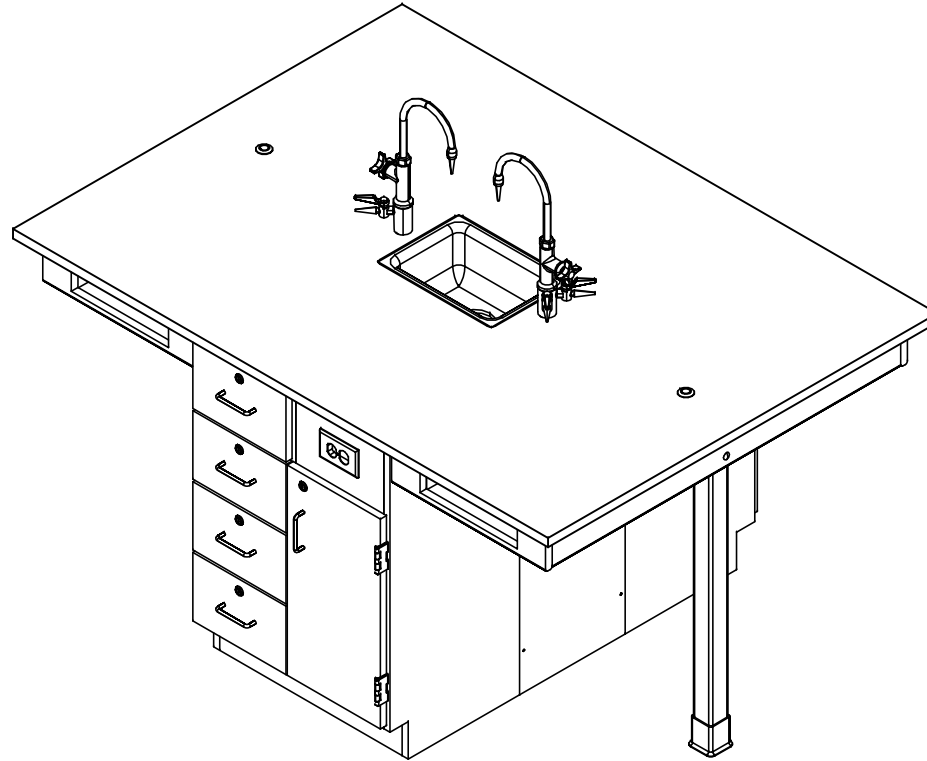


# STUDENT SERVICE ISLAND-DOUBLE

C2410K, C2410KF, C2610K, & C2610KF SERIES  
ASSEMBLY INSTRUCTIONS



**NOTE:**

1. MODEL VIEWS MAY NOT REPRESENT EXACT MODEL PURCHASED

|         |     |           |          |
|---------|-----|-----------|----------|
| DWN BY: | EMK | DWN DATE: | 10/31/16 |
| APR BY: |     | DATE APR: |          |
| APR BY: |     | DATE APR: |          |



300 South Krueger Street  
Suring, WI 54174  
diversifiedwoodcrafts.com

UNLESS OTHERWISE SPECIFIED  
DIMENSION ARE IN INCHES  
  
CABINET SQUARENESS ± .0625  
FRACTIONAL VALUES ± 1/32"  
- ALL VALUES ± OVERALL -

TITLE:  
STUDENT SERVICE ISLAND-DOUBLE  
ASSEMBLY INSTRUCTIONS

| REV.           | DESCRIPTION     | DATE     | NAME | ECN NO. |
|----------------|-----------------|----------|------|---------|
| A              | CREATED DRAWING | 10/31/16 | EMK  | -       |
| REVISION LEVEL |                 |          |      |         |

THIS DRAWING IS THE SOLE PROPERTY OF  
DIVERSIFIED WOOD CRAFTS. IT MAY NOT  
BE ALTERED OR CHANGED WITHOUT  
PERMISSION

|                        |        |         |           |
|------------------------|--------|---------|-----------|
| DRAWING NUMBER:        | SCALE: | SHEET:  | REVISION: |
| STUDENT SERVICE ISLAND | NTS    | 1 OF 13 | REV A     |

## TOOLS REQUIRED

|  |
|--|
| ½" WRENCH                              |
| ½" SOCKET AND TORQUE WRENCH - OPTIONAL |
| CONTACT CEMENT                         |
| SCREW DRIVER                           |
| C-CLAMPS                               |
| SHIM STOCK (IF NEEDED)                 |

## ASSEMBLY COMPONENTS

| ITEMS INCLUDED                             | PART # | PART DESCRIPTION  | QTY |
|--|--------|---|-----|
| TOP  | VARIES | TOP (STYLE VARIES), 1.00 X 48 X 66                              | 1   |
| CABINET W/ REMOVABLE PANEL CLEATS ATTACHED | N/A    | CABINET - 24"W X 35"H X 16"D<br>CLEATS - 1"W X 34.50"H X 0.75"D | 2   |
| REMOVABLE PANELS                           | N/A    | REM PANELS - 13"W X 35"H X 0.75"D                               | 2   |
| SCREWS - REMOVABLE PANELS                  | 100495 | SCREW, #10X1- ½ PHIL TR. SMS,ZN                                 | 12  |
| APRON ASSEMBLY                             | N/A    | APRON ASSEMBLY (FACTORY ASSEMBLED)                              | 2   |
| SILICONE                                   | 100711 | SILICONE,SEALANT,CLEAR  | 1   |
| LEGS                                       | 500101 | LEG,OAK 2.25X2.25X34.25   | 2   |
| LEG LEVELER                                | 100079 | LEG LEVELER,BLK BASE 1  | 2   |
| LEG BOOT                                   | 100076 | LEG BOOT,BLK RUBBER   | 2   |
| CARRIAGE BOLT                              | 100447 | BOLT, 5/16 X 4-12 CARRIAGE                                      | 4   |
| HEX NUT                                    | 100044 | NUT,HEX 5/16-18 STEEL ZINC                                      | 4   |
| WASHER                                     | 100451 | WASHER, 5/16 FLAT ZINC PLATED                                   | 4   |
| RUBBER BASE MOLDING                        | 100283 | RUBBER BASE MOLDING(SOLD BY FOOT)                               | 11  |
| STAINLESS STEEL CORNERS                    | 100057 | CORNERS-STAINLESS STEEL,BASE                                    | 4   |
| SCREWS - BASE                              | 100064 | SCREW, #6X½ PTH SMS SS SCREW                                    | 16  |
| ELECTRICAL BOX                             | 100033 | ELECTRICAL BOX 3.00X2X2.50 DEEP                                 | 1   |
| ELECTRICAL OUTLET                          | 100034 | ELEC,OUTLET,GFI,20A 125V,BLK                                    | 1   |
| L BRACKET                                  | 100355 | BRACKET,RAIL 1.25X1.25X4.25                                     | 4   |
| SCREWS - L BRACKET                         | 100649 | SCREW, #8X¾ PHIL TRUSS HEAD SMS                                 | 16  |

**NOTE:**

- TOPS ARE EITHER PHENOLIC OR EPOXY.

|         |     |           |          |
|---------|-----|-----------|----------|
| DWN BY: | EMK | DWN DATE: | 10/31/16 |
| APR BY: |     | DATE APR: |          |
| APR BY: |     | DATE APR: |          |

UNLESS OTHERWISE SPECIFIED  
DIMENSION ARE IN INCHES  
  
CABINET SQUARENESS ± .0625  
FRACTIONAL VALUES ± 1/32"  
- ALL VALUES ± OVERALL -



300 South Krueger Street  
Suring, WI 54174  
diversifiedwoodcrafts.com

TITLE:  
**STUDENT SERVICE ISLAND-DOUBLE  
TOOLS AND ASSEMBLY COMPONENTS**

| A    | CREATED DRAWING | 10/31/16 | EMK  | -       |
|------|-----------------|----------|------|---------|
| REV. | DESCRIPTION     | DATE     | NAME | ECN NO. |
|      |                 |          |      |         |

THIS DRAWING IS THE SOLE PROPERTY OF  
DIVERSIFIED WOOD CRAFTS. IT MAY NOT  
BE ALTERED OR CHANGED WITHOUT  
PERMISSION

|  |               |                   |                    |
|--|---------------|-------------------|--------------------|
| DRAWING NUMBER:<br><b>STUDENT SERVICE ISLAND</b> | SCALE:<br>NTS | SHEET:<br>2 OF 13 | REVISION:<br>REV A |
|--|---------------|-------------------|--------------------|

## ASSEMBLY COMPONENTS

| ITEMS INCLUDED             | PART #     | PART DESCRIPTION                    | QTY |
|----------------------------|------------|-------------------------------------|-----|
| **FIXTURE - FAUCETS**      | 100074-BKR | FIXTURE,L65-WSA-DIV (MULTI-SERVICE) | 2   |
| **FIXTURE - SINK**         | 100691     | SINK,EPOXY L3,BLK                   | 1   |
| **FIXTURE - SINK TRAP**    | 100056     | SINK TRAP,PLATIC ADJUSTABLE         | 1   |
| **FIXTURE - SINK STOPPER** | 100112     | SINK STOPPER 1 1/2,BLK              | 1   |
| **FIXTURE - STRAINER**     | 100055     | SINK,OUTLET/STAINER EPOXY,BLK       | 1   |
| **ROD SOCKETS**            | 206505     | ROD SOCKET ASSY,SOCKET,WASHER,NUT   | 2   |

NOTE:

1. **\*\*XX\*\*** INDICATES ITEMS USED ONLY FOR THE "K" SERIES.

|         |     |           |          |
|---------|-----|-----------|----------|
| DWN BY: | EMK | DWN DATE: | 10/31/16 |
| APR BY: |     | DATE APR: |          |
| APR BY: |     | DATE APR: |          |

UNLESS OTHERWISE SPECIFIED  
DIMENSION ARE IN INCHES  
  
CABINET SQUARENESS ± .0625  
FRACTIONAL VALUES ± 1/32"  
- ALL VALUES ± OVERALL -



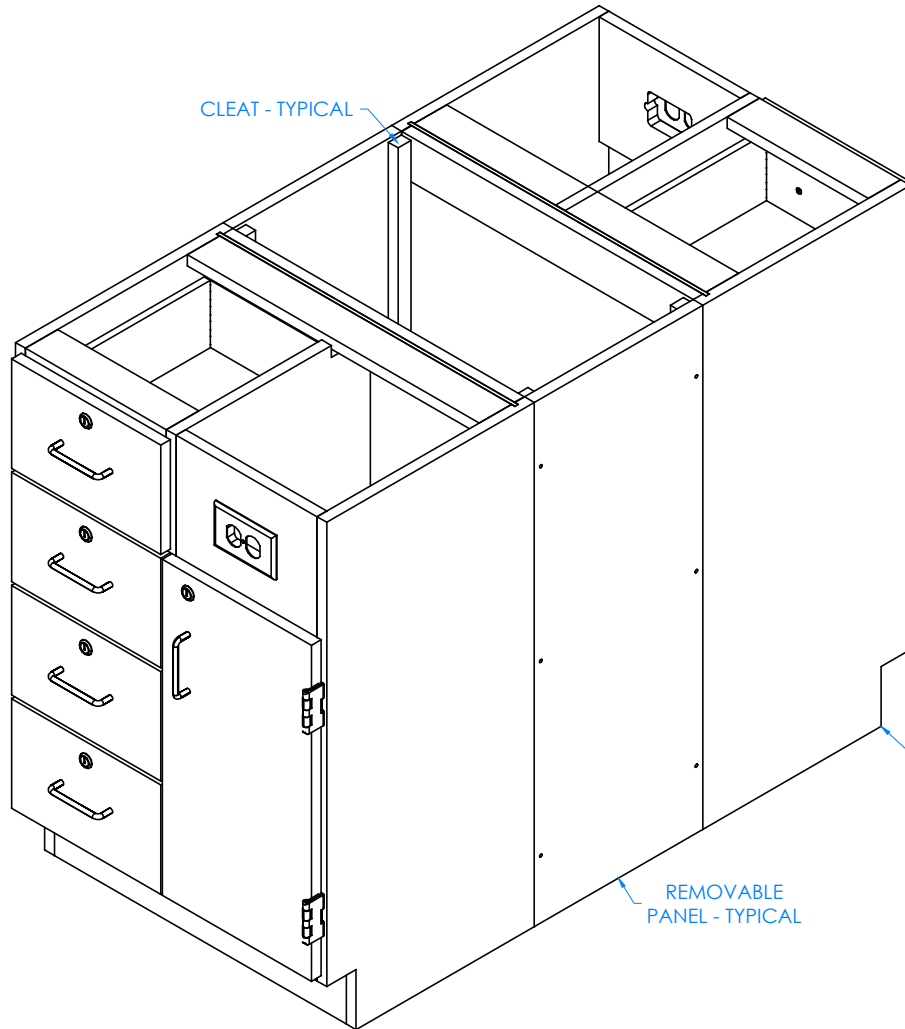
300 South Krueger Street  
Suring, WI 54174  
diversifiedwoodcrafts.com

TITLE:  
**STUDENT SERVICE ISLAND-DOUBLE  
TOOLS AND ASSEMBLY COMPONENTS**

| A    | CREATED DRAWING | 10/31/16 | EMK  | -       |
|------|-----------------|----------|------|---------|
| REV. | DESCRIPTION     | DATE     | NAME | ECN NO. |
|      |                 |          |      |         |

THIS DRAWING IS THE SOLE PROPERTY OF  
DIVERSIFIED WOOD CRAFTS. IT MAY NOT  
BE ALTERED OR CHANGED WITHOUT  
PERMISSION

|  |               |                   |                    |
|--|---------------|-------------------|--------------------|
| DRAWING NUMBER:<br><b>STUDENT SERVICE ISLAND</b> | SCALE:<br>NTS | SHEET:<br>3 OF 13 | REVISION:<br>REV A |
|--|---------------|-------------------|--------------------|



STEP 1:

- PLACE CABINETS BACK TO BACK IN DESIRED LOCATION.
- IF YOU HAVE "K" SERIES CABINETS, PLACE CABINETS OVER UTILITY HOOK-UPS.
- LEVEL CABINETS.
- ATTACH TO FLOOR.
- ATTACH REMOVABLE PANELS WITH HARDWARE PROVIDED TO CLEATS LOCATED ON BACK OF CABINETS.
- PRE-DRILL HOLES IN CLEAT TO PREVENT CRACKING.

**\*\*NOTE\*\***  
 CABINET MUST BE LEVELED OR DOORS AND DRAWERS MAY NOT OPEN OR CLOSE CORRECTLY

NOTE:

1.

|         |     |           |          |
|---------|-----|-----------|----------|
| DWN BY: | EMK | DWN DATE: | 10/31/16 |
| APR BY: |     | DATE APR: |          |
| APR BY: |     | DATE APR: |          |

UNLESS OTHERWISE SPECIFIED DIMENSION ARE IN INCHES

CABINET SQUARENESS ± .0625  
 FRACTIONAL VALUES ± 1/32"  
 - ALL VALUES ± OVERALL -



300 South Krueger Street  
 Suring, WI 54174  
 diversifiedwoodcrafts.com

TITLE:  
 STUDENT SERVICE ISLAND-DOUBLE  
 ASSEMBLY INSTRUCTIONS

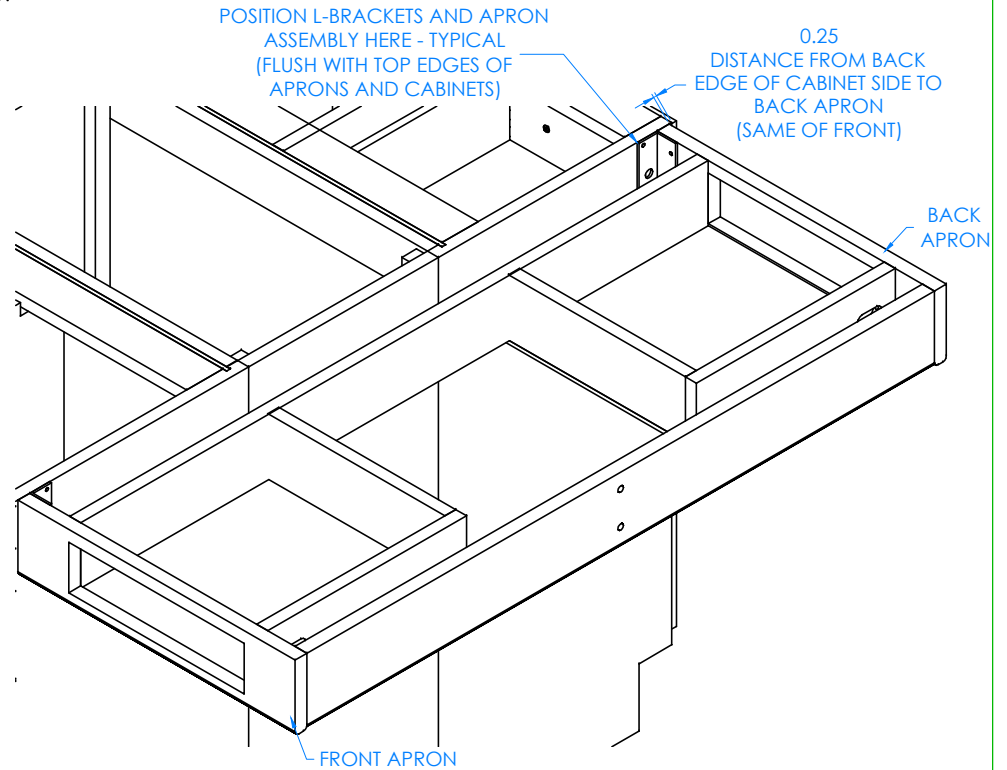
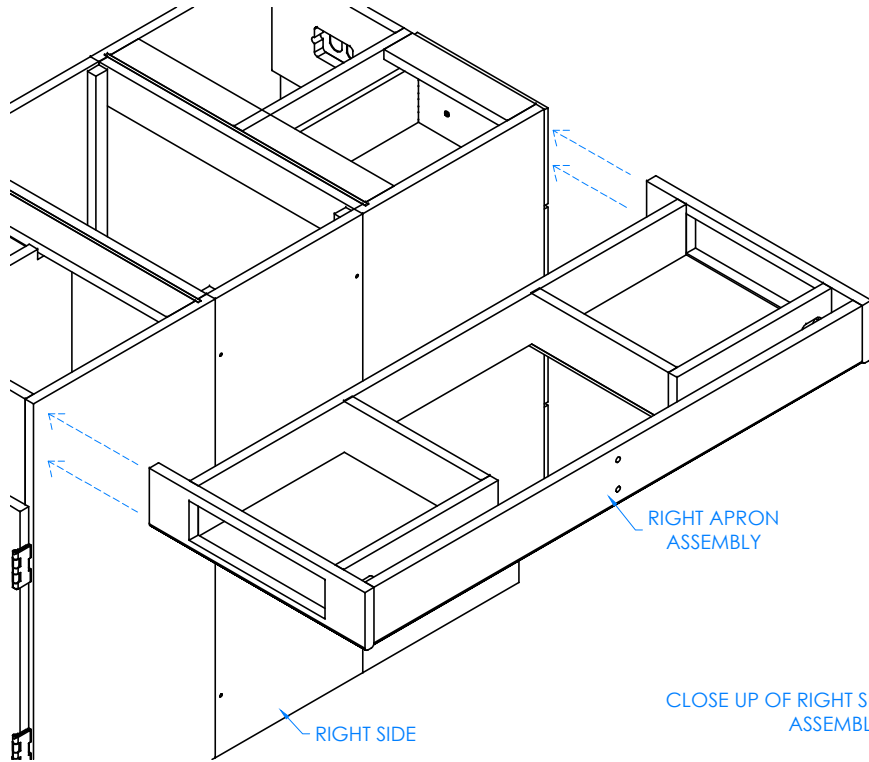
| REV.           | DESCRIPTION     | DATE     | NAME | ECN NO. |
|----------------|-----------------|----------|------|---------|
| A              | CREATED DRAWING | 10/31/16 | EMK  | -       |
| REVISION LEVEL |                 |          |      |         |

THIS DRAWING IS THE SOLE PROPERTY OF DIVERSIFIED WOOD CRAFTS. IT MAY NOT BE ALTERED OR CHANGED WITHOUT PERMISSION

|                        |        |         |           |
|------------------------|--------|---------|-----------|
| DRAWING NUMBER:        | SCALE: | SHEET:  | REVISION: |
| STUDENT SERVICE ISLAND | NTS    | 4 OF 13 | REV A     |

STEP 2:

- WITH HELP FROM ANOTHER PERSON, POSITION RIGHT APRON ASSEMBLY UP TO RIGHT SIDE OF CABINET SO IT IS CENTERED CORRECTLY AND FLUSH WITH TOP OF BASE CABINETS.
- PLACE L-BRACKETS IN CORRECT POSITION ON APRON ASSEMBLY AND SIDE OF CABINET (SHOULD BE FLUSH WITH TOP EDGE OF FRONT AND BACK APRONS).
- MARK ON SIDE OF CABINETS WHERE L-BRACKET NEEDS TO BE ATTACHED.
- SET APRON ASSEMBLY AND L-BRACKETS DOWN.
- REPEAT FOR LEFT SIDE.



CLOSE UP OF RIGHT SIDE AND RIGHT APRON ASSEMBLY SHOWN

NOTE:

1.

|         |     |           |          |
|---------|-----|-----------|----------|
| DWN BY: | EMK | DWN DATE: | 10/31/16 |
| APR BY: |     | DATE APR: |          |
| APR BY: |     | DATE APR: |          |

UNLESS OTHERWISE SPECIFIED DIMENSION ARE IN INCHES

CABINET SQUARENESS ± .0625  
 FRACTIONAL VALUES ± 1/32"  
 - ALL VALUES ± OVERALL -



300 South Krueger Street  
 Suring, WI 54174  
 diversifiedwoodcrafts.com

TITLE:  
**STUDENT SERVICE ISLAND-DOUBLE  
 ASSEMBLY INSTRUCTIONS**

| REV.           | DESCRIPTION     | DATE     | NAME | ECN NO. |
|----------------|-----------------|----------|------|---------|
| A              | CREATED DRAWING | 10/31/16 | EMK  | -       |
| REVISION LEVEL |                 |          |      |         |

THIS DRAWING IS THE SOLE PROPERTY OF  
 DIVERSIFIED WOOD CRAFTS. IT MAY NOT  
 BE ALTERED OR CHANGED WITHOUT  
 PERMISSION

DRAWING NUMBER:

**STUDENT SERVICE ISLAND**

SCALE:

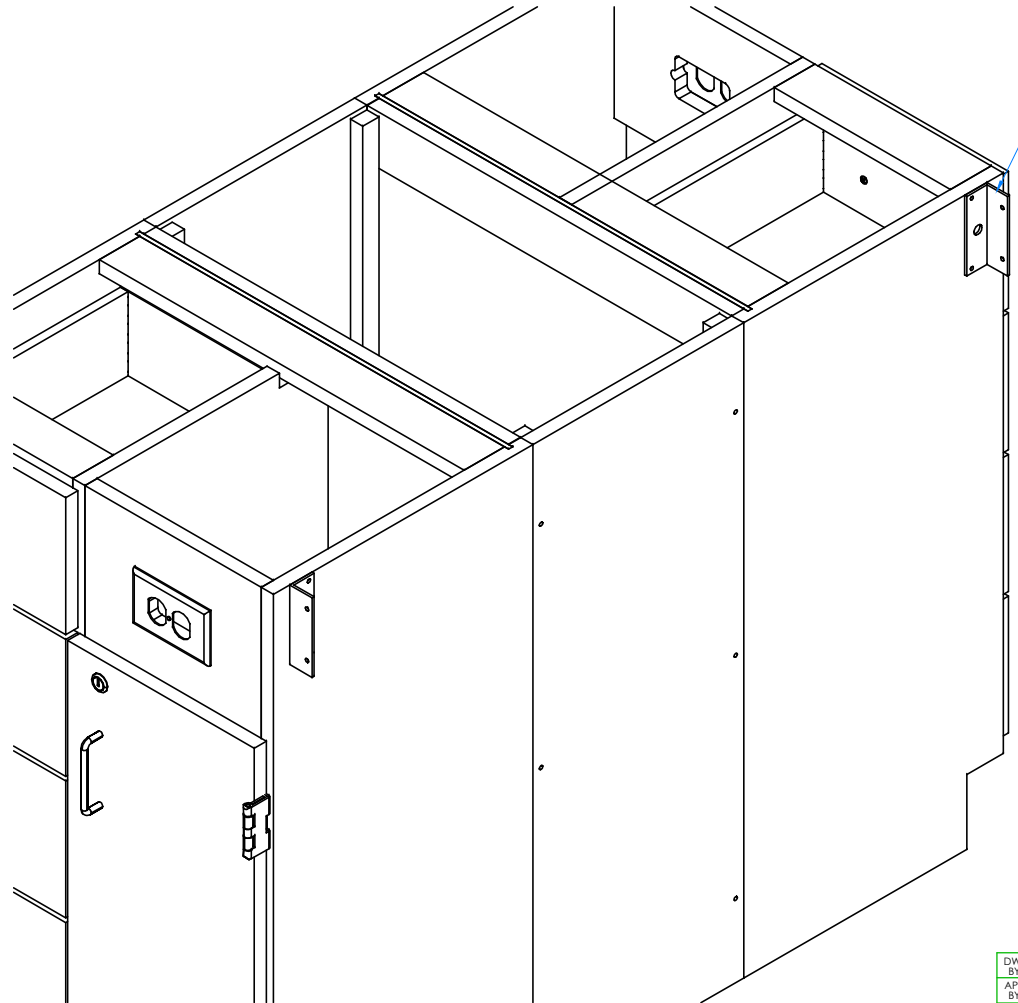
NTS

SHEET:

5 OF 13

REVISION:

REV A



L-BRACKET - TYPICAL

STEP 3:

- ATTACH L-BRACKETS TO RIGHT SIDE OF CABINET WITH HARDWARE PROVIDED.
- REPEAT ON LEFT SIDE.

NOTE:

1.

CLOSE UP OF RIGHT SIDE SHOWN

|         |     |           |          |
|---------|-----|-----------|----------|
| DWN BY: | EMK | DWN DATE: | 10/31/16 |
| APR BY: |     | DATE APR: |          |
| APR BY: |     | DATE APR: |          |

UNLESS OTHERWISE SPECIFIED DIMENSION ARE IN INCHES

CABINET SQUARENESS ± .0625  
 FRACTIONAL VALUES ± 1/32"  
 - ALL VALUES ± OVERALL -



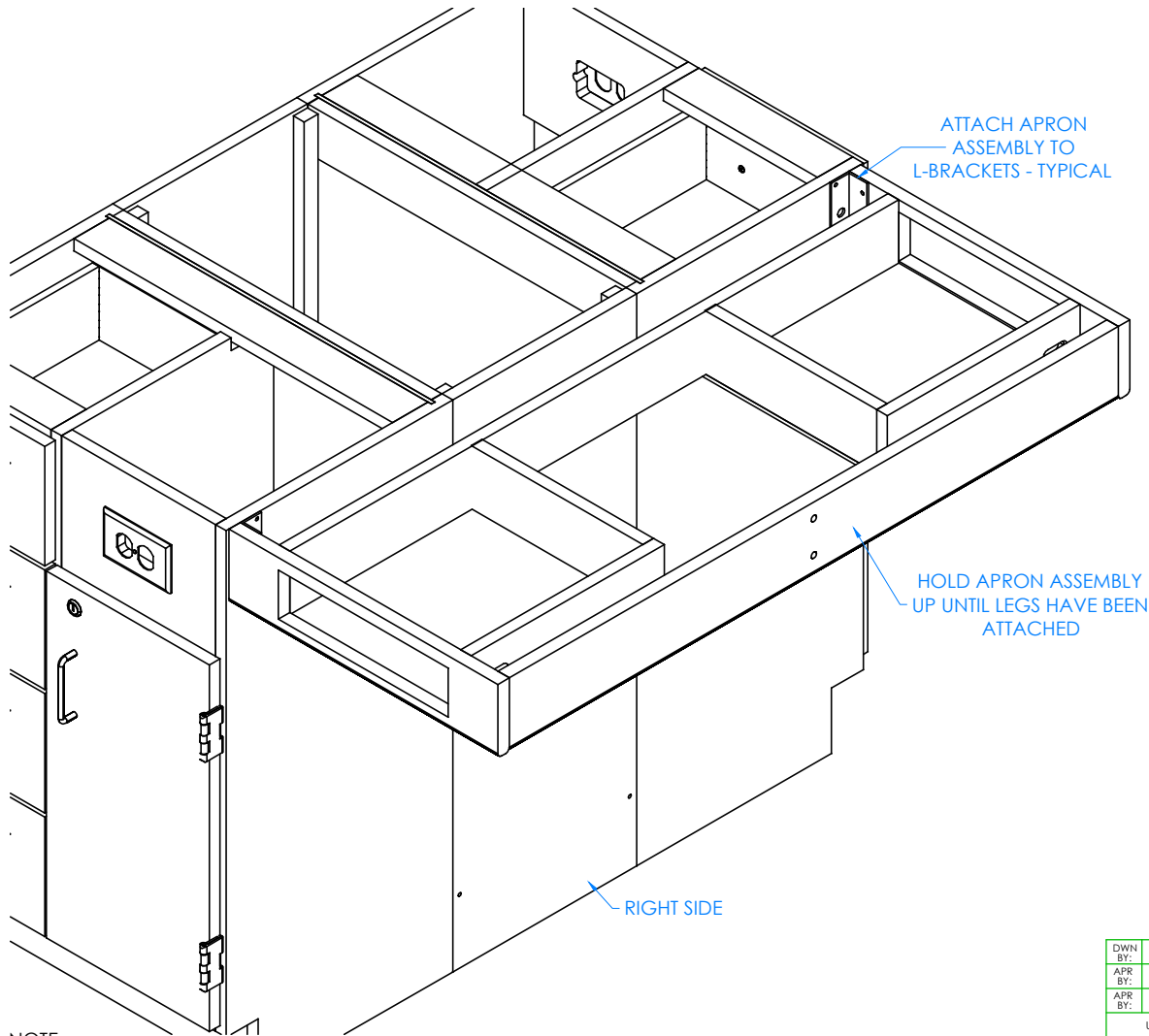
300 South Krueger Street  
 Suring, WI 54174  
 diversifiedwoodcrafts.com

TITLE:  
**STUDENT SERVICE ISLAND-DOUBLE  
 ASSEMBLY INSTRUCTIONS**

| REV.           | DESCRIPTION     | DATE     | NAME | ECN NO. |
|----------------|-----------------|----------|------|---------|
| A              | CREATED DRAWING | 10/31/16 | EMK  | -       |
| REVISION LEVEL |                 |          |      |         |

THIS DRAWING IS THE SOLE PROPERTY OF DIVERSIFIED WOOD CRAFTS, IT MAY NOT BE ALTERED OR CHANGED WITHOUT PERMISSION

|                               |        |         |           |
|-------------------------------|--------|---------|-----------|
| DRAWING NUMBER:               | SCALE: | SHEET:  | REVISION: |
| <b>STUDENT SERVICE ISLAND</b> | NTS    | 6 OF 13 | REV A     |



STEP 4:

- WITH HELP FROM ANOTHER PERSON, PLACE APRON ASSEMBLY UP TO SIDE AND ATTACH TO L-BRACKETS WITH HARDWARE PROVIDED.
- SUPPORT THIS ASSEMBLY UNTIL LEGS HAVE BEEN ATTACHED. IT IS NOT STRONG ENOUGH TO WITHSTAND WEIGHT UNTIL LEGS AND TOP ARE ATTACHED.
- REPEAT ON LEFT SIDE.

NOTE:

1.

CLOSE UP OF APRON ASSEMBLY ATTACHED TO SIDE OF CABINET SHOWN

|         |     |           |          |
|---------|-----|-----------|----------|
| DWN BY: | EMK | DWN DATE: | 10/31/16 |
| APR BY: |     | DATE APR: |          |
| APR BY: |     | DATE APR: |          |

UNLESS OTHERWISE SPECIFIED DIMENSION ARE IN INCHES

CABINET SQUARENESS ± .0625  
FRACTIONAL VALUES ± 1/32"  
- ALL VALUES ± OVERALL -



300 South Krueger Street  
Suring, WI 54174  
diversifiedwoodcrafts.com

TITLE:  
STUDENT SERVICE ISLAND-DOUBLE  
ASSEMBLY INSTRUCTIONS

| REV.           | DESCRIPTION     | DATE     | NAME | ECN NO. |
|----------------|-----------------|----------|------|---------|
| A              | CREATED DRAWING | 10/31/16 | EMK  | -       |
| REVISION LEVEL |                 |          |      |         |

THIS DRAWING IS THE SOLE PROPERTY OF DIVERSIFIED WOOD CRAFTS. IT MAY NOT BE ALTERED OR CHANGED WITHOUT PERMISSION

DRAWING NUMBER:

STUDENT SERVICE ISLAND

SCALE:

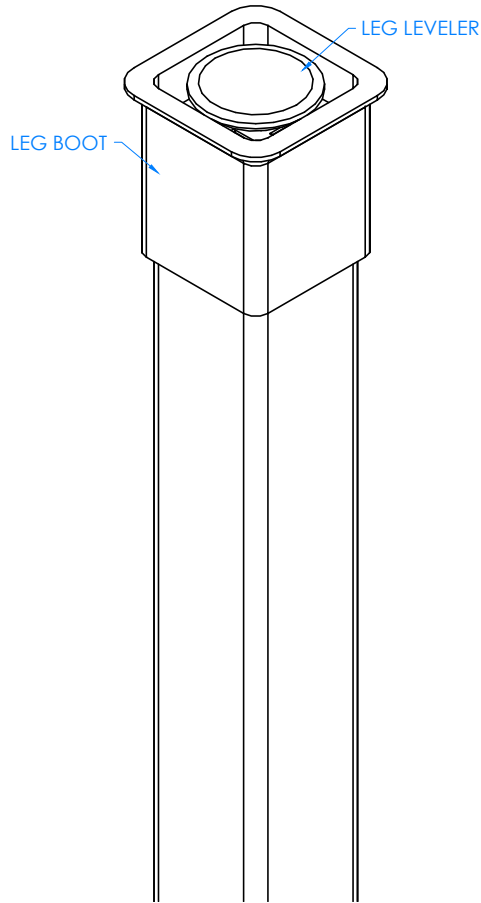
NTS

SHEET:

7 OF 13

REVISION:

REV A



CLOSE UP OF LEG LEVELER AND LEG BOOT ASSEMBLY

STEP 5:

- SLIDE LEG BOOT ONTO LEG WITH FLARED END TOWARDS BOTTOM OF LEGS.
- SCREW LEG LEVELER INTO T-NUT ON BOTTOM OF LEGS.

NOTE:

1.

|         |     |           |          |
|---------|-----|-----------|----------|
| DWN BY: | EMK | DWN DATE: | 10/31/16 |
| APR BY: |     | DATE APR: |          |
| APR BY: |     | DATE APR: |          |

UNLESS OTHERWISE SPECIFIED DIMENSION ARE IN INCHES  
 CABINET SQUARENESS ± .0625  
 FRACTIONAL VALUES ± 1/32"  
 - ALL VALUES ± OVERALL -



300 South Krueger Street  
 Suring, WI 54174  
 diversifiedwoodcrafts.com

TITLE:  
 STUDENT SERVICE ISLAND-DOUBLE  
 ASSEMBLY INSTRUCTIONS

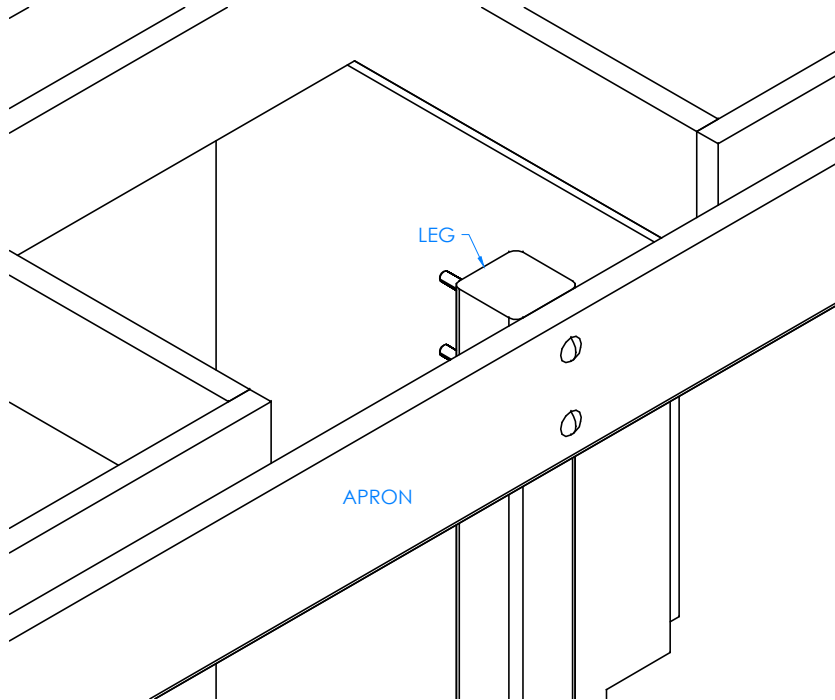
| REV.           | DESCRIPTION     | DATE     | NAME | ECN NO. |
|----------------|-----------------|----------|------|---------|
| A              | CREATED DRAWING | 10/31/16 | EMK  | -       |
| REVISION LEVEL |                 |          |      |         |

THIS DRAWING IS THE SOLE PROPERTY OF DIVERSIFIED WOOD CRAFTS. IT MAY NOT BE ALTERED OR CHANGED WITHOUT PERMISSION

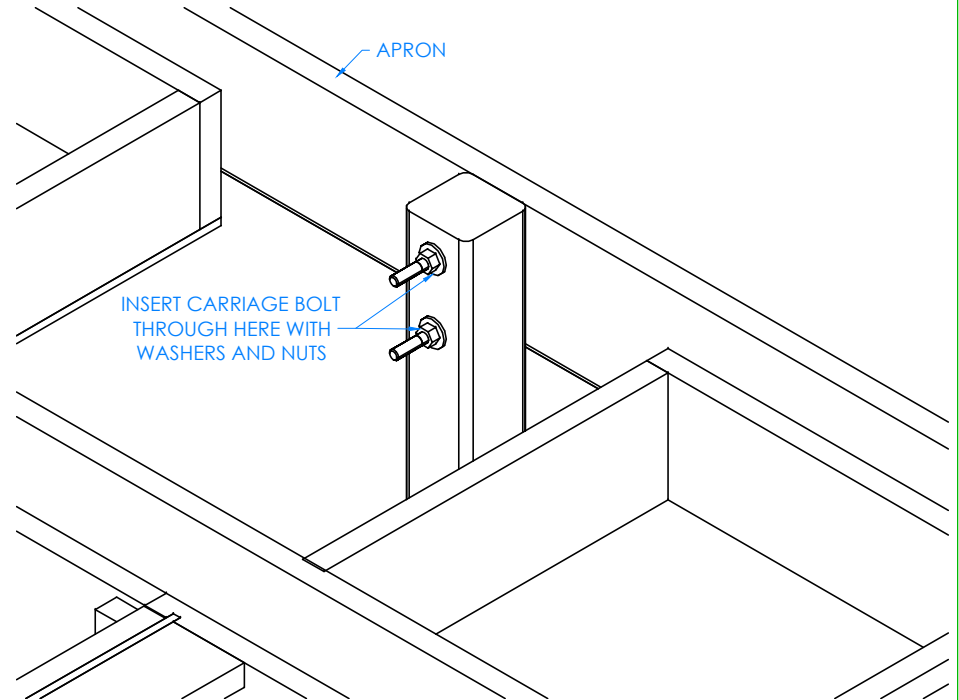
|                        |        |         |           |
|------------------------|--------|---------|-----------|
| DRAWING NUMBER:        | SCALE: | SHEET:  | REVISION: |
| STUDENT SERVICE ISLAND | NTS    | 8 OF 13 | REV A     |

STEP 6:

- LINE UP HOLES ON APRON WITH HOLES ON LEG AND INSERT CARRIAGE BOLTS, WASHERS, AND HEX NUTS.
- TIGHTEN NUTS USING A 1/2" WRENCH OR 1/2" SOCKET AND TORQUE WRENCH, TO A MINIMUM OF 12FT LBS BUT NOT TO EXCEED 17FT LBS.
- LEG SHOULD BE PERPENDICULAR TO THE APRON.
- REPEAT FOR OTHER LEG.
- DO *NOT* APPLY PRESSURE TO THE APRON ASSEMBLIES AT THIS TIME.
- THEY ARE NOT STRONG ENOUGH TO WITHSTAND WEIGHT UNTIL TOP IS ATTACHED.



OUTSIDE OF CENTER LEG ASSEMBLY SHOWN



INSIDE OF CENTER LEG ASSEMBLY SHOWN

NOTE:

1.

|         |     |           |          |
|---------|-----|-----------|----------|
| DWN BY: | EMK | DWN DATE: | 10/31/16 |
| APR BY: |     | DATE APR: |          |
| APR BY: |     | DATE APR: |          |



300 South Krueger Street  
Suring, WI 54174  
diversifiedwoodcrafts.com

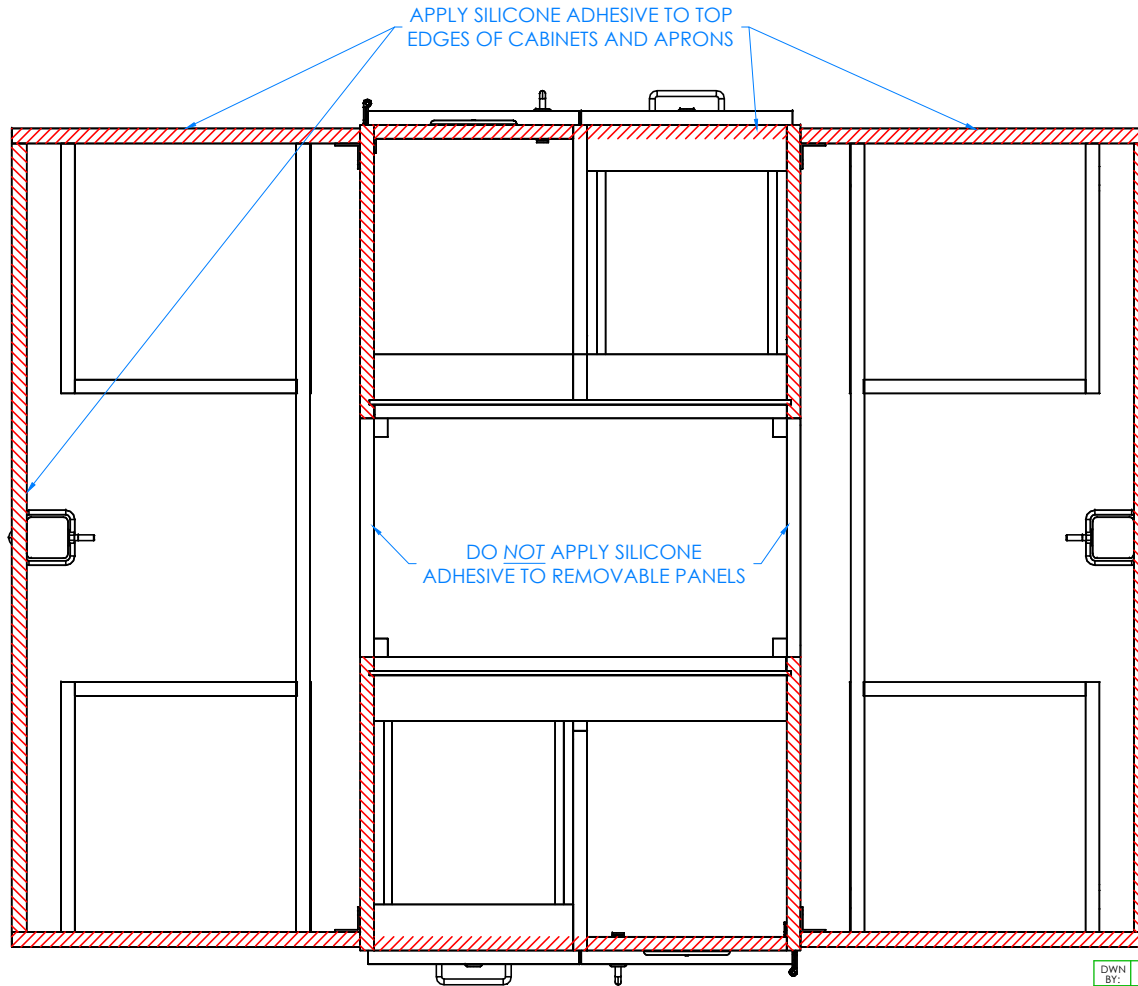
UNLESS OTHERWISE SPECIFIED  
DIMENSION ARE IN INCHES  
CABINET SQUARENESS ± .0625  
FRACTIONAL VALUES ± 1/32"  
- ALL VALUES ± OVERALL -

TITLE:  
STUDENT SERVICE ISLAND-DOUBLE  
ASSEMBLY INSTRUCTIONS

| REV.           | DESCRIPTION     | DATE     | NAME | ECN NO. |
|----------------|-----------------|----------|------|---------|
| A              | CREATED DRAWING | 10/31/16 | EMK  | -       |
| REVISION LEVEL |                 |          |      |         |

THIS DRAWING IS THE SOLE PROPERTY OF  
DIVERSIFIED WOOD CRAFTS. IT MAY NOT  
BE ALTERED OR CHANGED WITHOUT  
PERMISSION

|                        |        |         |           |
|------------------------|--------|---------|-----------|
| DRAWING NUMBER:        | SCALE: | SHEET:  | REVISION: |
| STUDENT SERVICE ISLAND | NTS    | 9 OF 13 | REV A     |



STEP 7:

- ADJUST LEG LEVELERS TO LEVEL LEGS WITH CABINETS.
- APPLY SILICONE ADHESIVE TO TOP EDGES OF CABINET AND APRONS.
- PLACE TOP ON UNIT WITH PROPER OVERHANG (2" OVERHANG ON SIDES AND 1.25" ON FRONT AND BACK).
- CLAMP ON TOP TO APRONS TO REMOVE ANY WARP USING SHIMS AND C-CLAMPS, IF NEEDED, WHEN ALIGNING THE TOP (DO THIS BEFORE ADHESIVE ON EDGES SETS UP).
- LET CURE FOR 6-12 HOURS.
- DO NOT APPLY SILICONE ADHESIVE TO REMOVABLE PANELS.

NOTE:

1.

TOP VIEW OF TABLE SHOWN

|         |     |           |          |
|---------|-----|-----------|----------|
| DWN BY: | EMK | DWN DATE: | 10/31/16 |
| APR BY: |     | DATE APR: |          |
| APR BY: |     | DATE APR: |          |

UNLESS OTHERWISE SPECIFIED DIMENSION ARE IN INCHES

CABINET SQUARENESS ± .0625  
 FRACTIONAL VALUES ± 1/32"  
 - ALL VALUES ± OVERALL -



300 South Krueger Street  
 Suring, WI 54174  
 diversifiedwoodcrafts.com

TITLE:  
 STUDENT SERVICE ISLAND-DOUBLE  
 ASSEMBLY INSTRUCTIONS

| REV.           | DESCRIPTION     | DATE     | NAME | ECN NO. |
|----------------|-----------------|----------|------|---------|
| A              | CREATED DRAWING | 10/31/16 | EMK  | -       |
| REVISION LEVEL |                 |          |      |         |

THIS DRAWING IS THE SOLE PROPERTY OF  
 DIVERSIFIED WOOD CRAFTS. IT MAY NOT  
 BE ALTERED OR CHANGED WITHOUT  
 PERMISSION

DRAWING NUMBER:

STUDENT SERVICE ISLAND

SCALE:

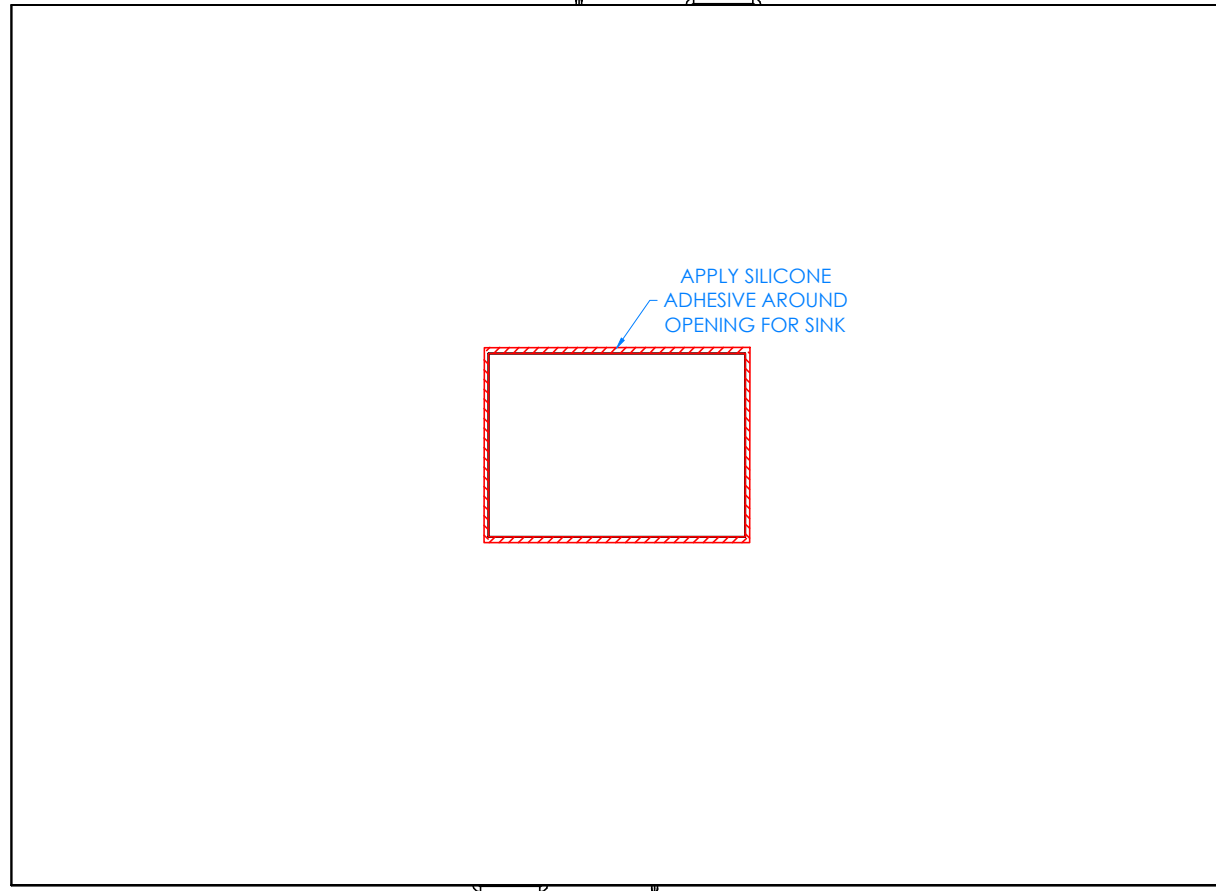
NTS

SHEET:

10 OF 13

REVISION:

REV A



APPLY SILICONE  
ADHESIVE AROUND  
OPENING FOR SINK

TOP

STEP 8:

- IF YOU DO NOT HAVE A "K" SERIES UNIT, SKIP TO STEP 9.
- APPLY SILICONE ADHESIVE TO SINK OPENING ON TOP.
- LOWER SINK INTO OPENING.
- WIPE OFF ANY EXCESS CAULK AND ALLOW TO SET.
- LET CURE FOR 6-12 HOURS.

NOTE:

- 1.

TOP VIEW OF TABLE SHOWN

|         |     |           |          |
|---------|-----|-----------|----------|
| DWN BY: | EMK | DWN DATE: | 10/31/16 |
| APR BY: |     | DATE APR: |          |
| APR BY: |     | DATE APR: |          |

UNLESS OTHERWISE SPECIFIED  
DIMENSION ARE IN INCHES  
CABINET SQUARENESS ± .0625  
FRACTIONAL VALUES ± 1/32"  
- ALL VALUES ± OVERALL -



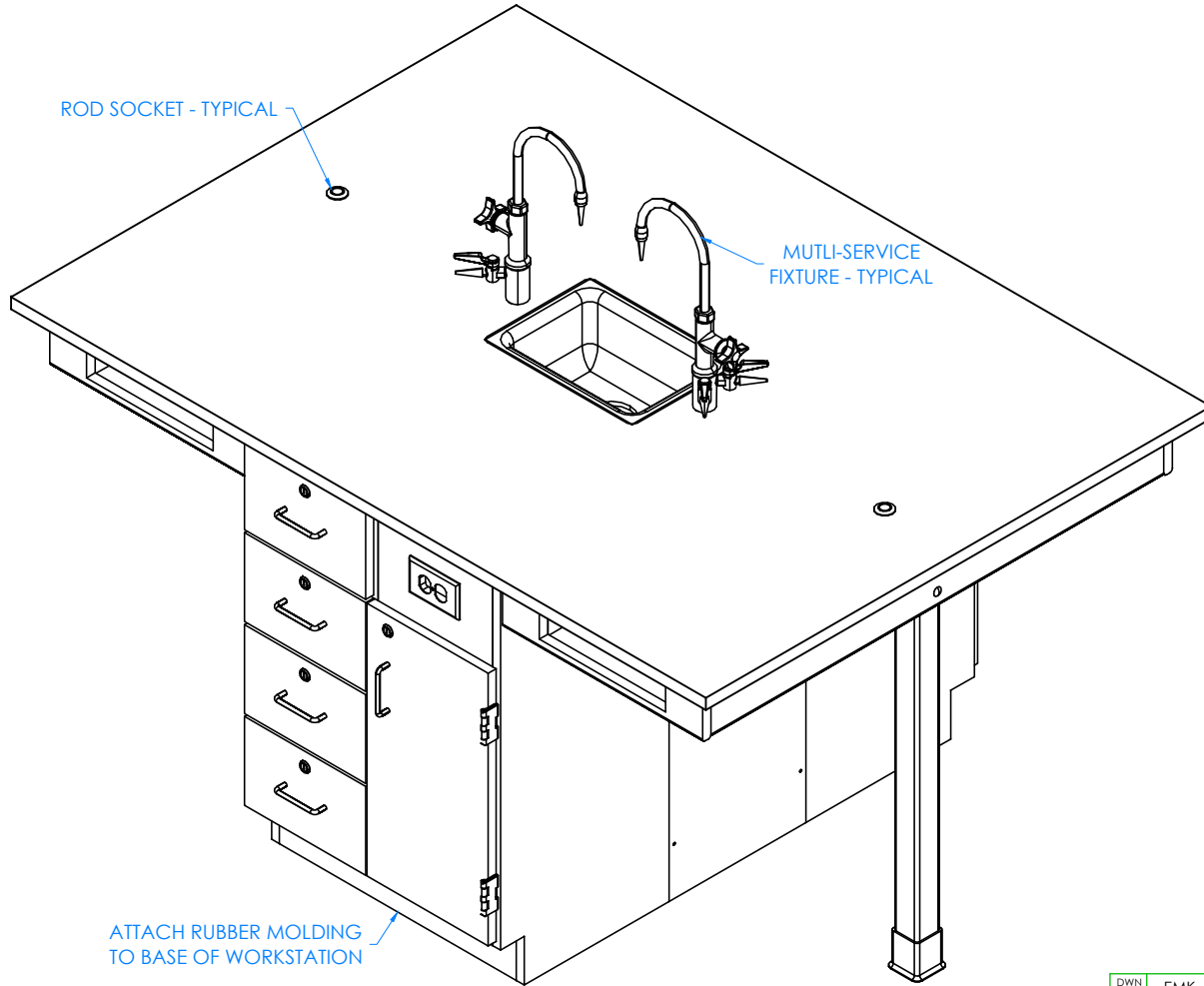
300 South Krueger Street  
Suring, WI 54174  
diversifiedwoodcrafts.com

TITLE:  
STUDENT SERVICE ISLAND-DOUBLE  
ASSEMBLY INSTRUCTIONS

| REV.           | DESCRIPTION     | DATE     | NAME | ECN NO. |
|----------------|-----------------|----------|------|---------|
| A              | CREATED DRAWING | 10/31/16 | EMK  | -       |
| REVISION LEVEL |                 |          |      |         |

THIS DRAWING IS THE SOLE PROPERTY OF  
DIVERSIFIED WOOD CRAFTS. IT MAY NOT  
BE ALTERED OR CHANGED WITHOUT  
PERMISSION

|                        |        |          |           |
|------------------------|--------|----------|-----------|
| DRAWING NUMBER:        | SCALE: | SHEET:   | REVISION: |
| STUDENT SERVICE ISLAND | NTS    | 11 OF 13 | REV A     |



STEP 9:

- ATTACH RUBBER MOLDING TO BASE OF CABINET USING CONTACT CEMENT.
- SCREW STAINLESS STEEL CORNER BRACKETS ON EACH CORNER OVER BASE MOLDING WITH HARDWARE PROVIDED.
- IF YOU HAVE A "K" SERIES UNIT, INSTALL MULTI-SERVICE FIXTURES IN HOLES PROVIDED ON TOP.
- INSERT ROD SOCKETS INTO PRE-DRILLED HOLES IN TOP.

NOTE:

1. ALL WATER, ELECTRICAL, AND GAS CONNECTIONS SHOULD BE PERFORMED BY A TRAINED PROFESSIONAL PER LOCAL CODE.

COMPLETE UNIT SHOWN

|         |     |           |          |
|---------|-----|-----------|----------|
| DWN BY: | EMK | DWN DATE: | 10/31/16 |
| APR BY: |     | DATE APR: |          |
| APR BY: |     | DATE APR: |          |

UNLESS OTHERWISE SPECIFIED DIMENSION ARE IN INCHES  
 CABINET SQUARENESS ± .0625  
 FRACTIONAL VALUES ± 1/32"  
 - ALL VALUES ± OVERALL -



300 South Krueger Street  
 Suring, WI 54174  
 diversifiedwoodcrafts.com

TITLE:  
 STUDENT SERVICE ISLAND-DOUBLE  
 ASSEMBLY INSTRUCTIONS

| REV.           | DESCRIPTION     | DATE     | NAME | ECN NO. |
|----------------|-----------------|----------|------|---------|
| A              | CREATED DRAWING | 10/31/16 | EMK  | -       |
| REVISION LEVEL |                 |          |      |         |

THIS DRAWING IS THE SOLE PROPERTY OF  
 DIVERSIFIED WOOD CRAFTS. IT MAY NOT  
 BE ALTERED OR CHANGED WITHOUT  
 PERMISSION

|                        |        |          |           |
|------------------------|--------|----------|-----------|
| DRAWING NUMBER:        | SCALE: | SHEET:   | REVISION: |
| STUDENT SERVICE ISLAND | NTS    | 12 OF 13 | REV A     |

## **TROUBLESHOOTING YOUR GFCI ELECTRICAL RECEPTACLE:**

**PLEASE NOTE: THROUGHOUT ANY OF THE FOLLOWING STEPS (PROCEDURES); IF YOU ARE NOT SURE YOU CAN DO THIS JOB SAFELY, AND COMPETENTLY, REFER THIS WORK TO QUALIFIED PROFESSIONAL!**

**If your unit comes equipped with a GFCI (Ground Fault Circuit Interrupter) electrical receptacle, and there is no power in the receptacle please consider/check the following:**

- The extension cord (if being used) is working properly.
- The breaker hasn't been tripped, or turned off.

This type of GFCI has two testing-related buttons on it. One button is appropriately labeled "TEST", and the other button is labeled "RESET". To test the GFCI receptacle follow these steps:

- Plug in an appliance (lamp or night light) into the outlet. The light should now be on. Then press the "TEST" button on the GFCI. The GFCI "RESET" button should pop out, and the light should go out.
- If the "RESET" button pops out, but the light doesn't go out, the GFCI has been improperly wired. In this case please contact a certified professional. There may also be a problem with other wiring in the same circuit.
- If the "RESET" button doesn't pop out, the GFCI is defective, or malfunctioned, and should be replaced.
- If the GFCI is functioning properly, and the lamp goes out, press the "RESET" button to restore power to the outlet.

Conversely, if you have a GFI that has tripped (which is common) and it will not reset, you may have a wiring short in the circuit, a defective appliance on the circuit, or the GFI itself has become defective. To test a tripping GFCI follow these steps:

- Remove every appliance connected to the GFCI's circuit and reset it. If it doesn't reset there may either be a wiring fault behind a socket outlet, or your GFCI itself has become faulty.
- Make sure whatever you are plugging into to the GFCI is dry and not damaged.
- Only plug in one item at a time. If you are plugging in a defective item it will cause the GFCI to trip, and that item therefore should be replaced.

If you are still having difficulty the easiest way to troubleshoot a GFI is to obtain a GFI tester, which is available at most hardware stores. It plugs into the GFI outlet, and will supply you with a "snapshot" of your connections, indicating wiring problems and/or the condition of the GFI. Another way to troubleshoot is to simply purchase a new GFI and install it.