

Side Tete-a-Tete

Required Tools: #2 Philips or Robertson driver (wood glue on joints optional).

Chair Parts:

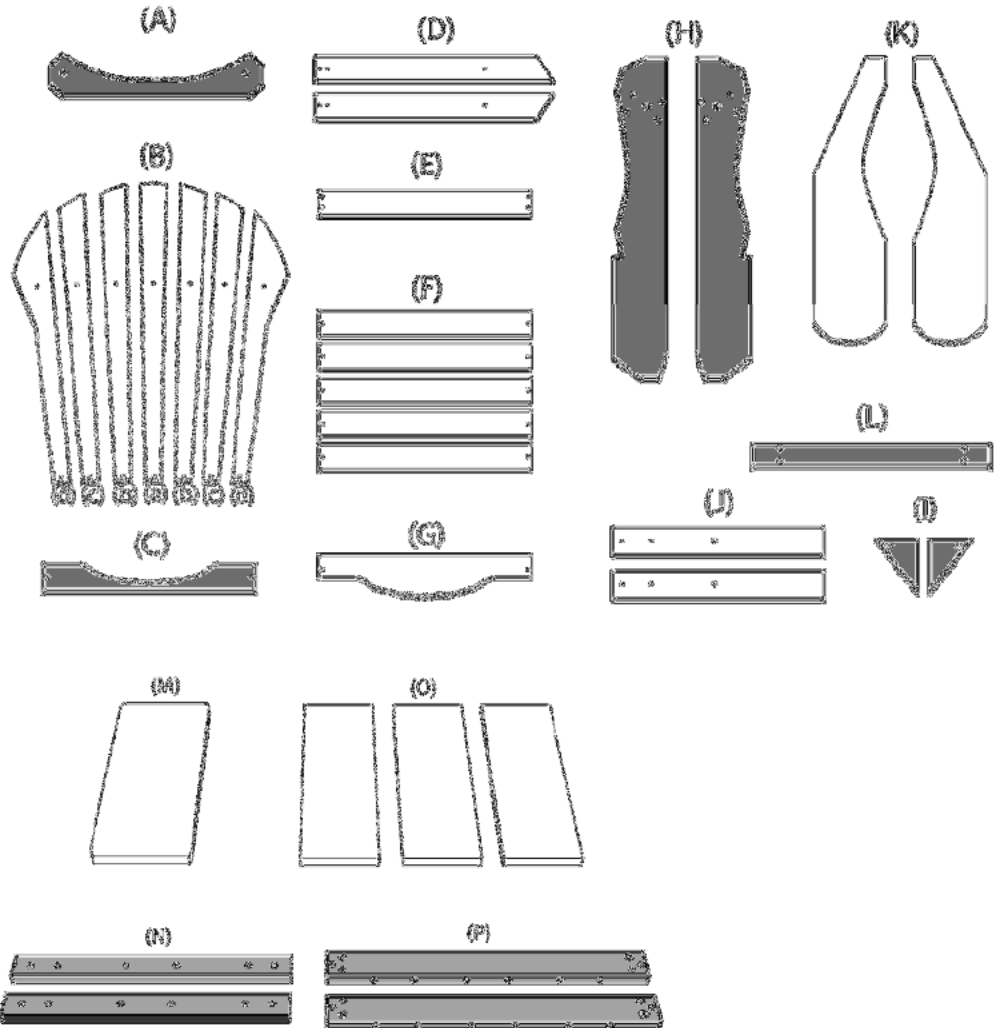
- (A) Top Support... 2
- (B) Back Slats... 14
- (C) Bottom Support... 2
- (D) Struts... 4
- (E) Front Slat... 2
- (F) Seat Slats... 10
- (G) Rear Cove Slat... 2
- (H) Sides... 4
- (I) Triangle Brace... 4
- (J) Front Legs... 4
- (K) Arm Paddles... 4
- (L) Rear Arm Support... 2

Table Parts:

- (M) Top Board... 1
- (N) Top Cleats... 2
- (O) Bottom Boards... 3
- (P) Bottom Cleats... 2

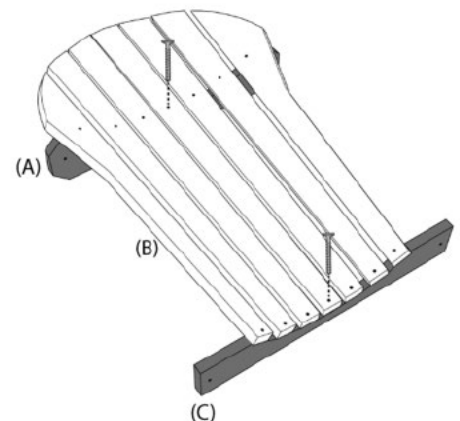
Hardware Pack:

- 1-1/2 Inch Screws... 44
- 1 3/4-Inch Screws... 92
- 2-1/2 Inch Screws... 14
- Spacer Blocks... 2
- Carriage Bolts... 4
- Washers... 4
- Hex nut... 4



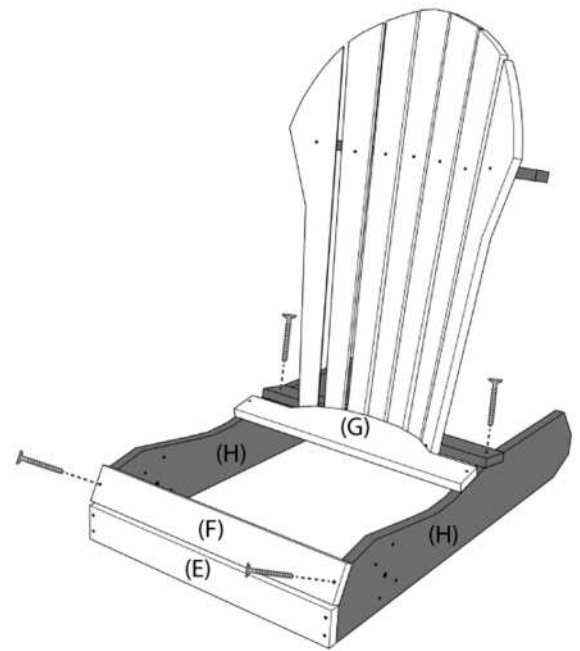
STEP 1. Build Back Assembly

- Fan out Back Slats (B) in curved sections of Top Support (A) and Bottom Support (C), space slats evenly.
- Attach the 2 outside slats first with 1-3/4 inch screws, then the center slat, then the remaining slats.



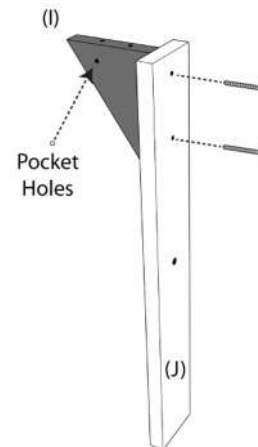
STEP 2. Build Seat Assembly

- Attach Front Slat (E) to front of Sides (H) with 1- $\frac{3}{4}$ inch screws.
- Place Back Assembly onto notches on sides, attach with 1- $\frac{3}{4}$ inch screws.
- Place Rear Cove Slat (G) across sides, snug against back slats, attach with 1- $\frac{3}{4}$ inch screws.
- Evenly space Seat Slats (F) between the front slat and back assembly, attach with 1- $\frac{3}{4}$ inch screws.



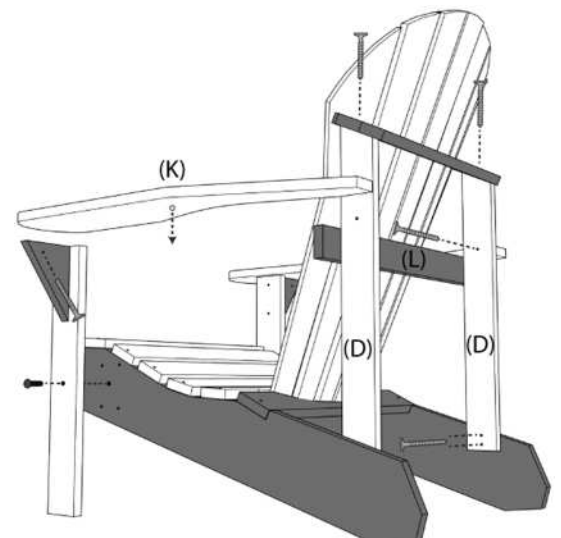
STEP 3. Build Leg Assembly

- Set Triangle Brace (I) against twin holes on Front Leg (J), arrange with pocket holes at top.
- Make flush with top of leg and attach with 1 $\frac{3}{4}$ -Inch screws.

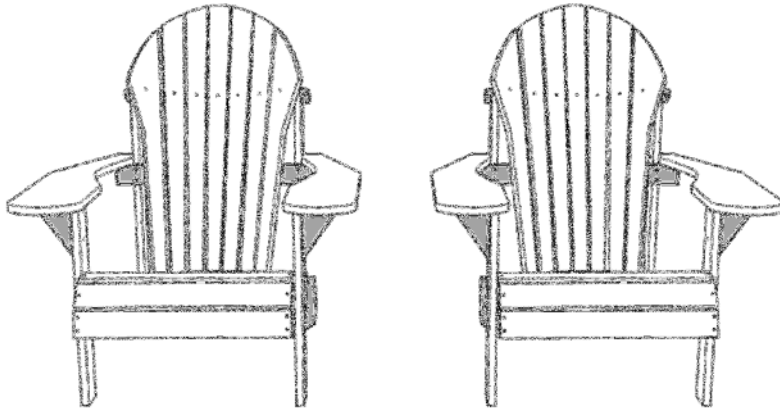


STEP 4. Chair Assembly

- Position Struts (D) with high angle toward front of chair, attach to top brace with 1 $\frac{3}{4}$ -Inch screws.
- Attach Leg Assembly to Seat Assembly with carriage bolts, washers and nuts. Reinforce with 1- $\frac{1}{2}$ screws from underside of Seat Assembly.
- Position Arm Paddle (K) over leg assembly. Flush rear of arm with backside of strut. Center screw on arm and attach with a 1- $\frac{3}{4}$ inch screw.
- Allow inside of arm paddle to overhang leg assembly by $\frac{3}{4}$ -inch, attach through pocket holes on triangle brace using 1- $\frac{3}{4}$ inch screws.
- Attach bottom of struts to sides with 1- $\frac{1}{2}$ screws.
- Position Rear Arm Support (L) across struts, snug up to bottom of arms, attach using 1- $\frac{3}{4}$ inch screws.

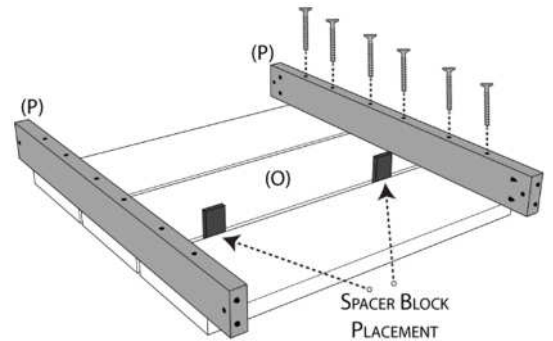


Repeat Steps 1 – 4. Assemble second chair



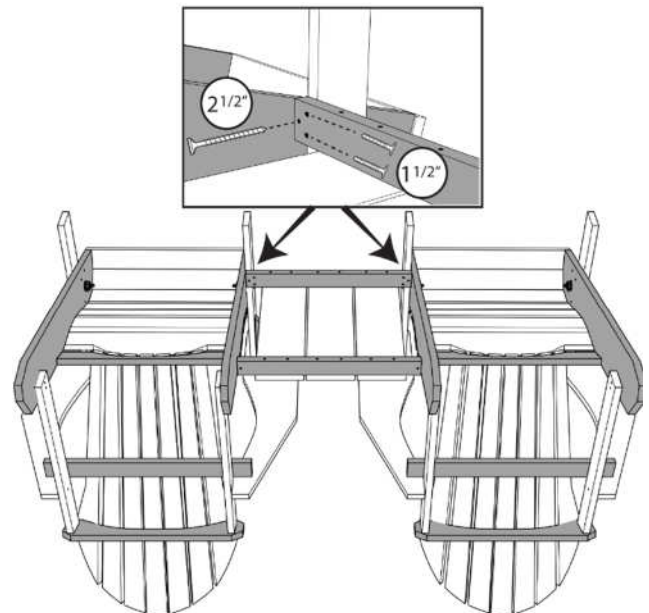
STEP 5. Assemble Lower Table

- Evenly space Bottom Boards (O) using spacer blocks.
- Set Bottom Cleats (P) across bottom boards, pocket holes facing each other.
- Allow cleats to evenly overhang sides of bottom boards.
- Flush cleat with ends of bottom boards, attach with 2-½ inch screws.



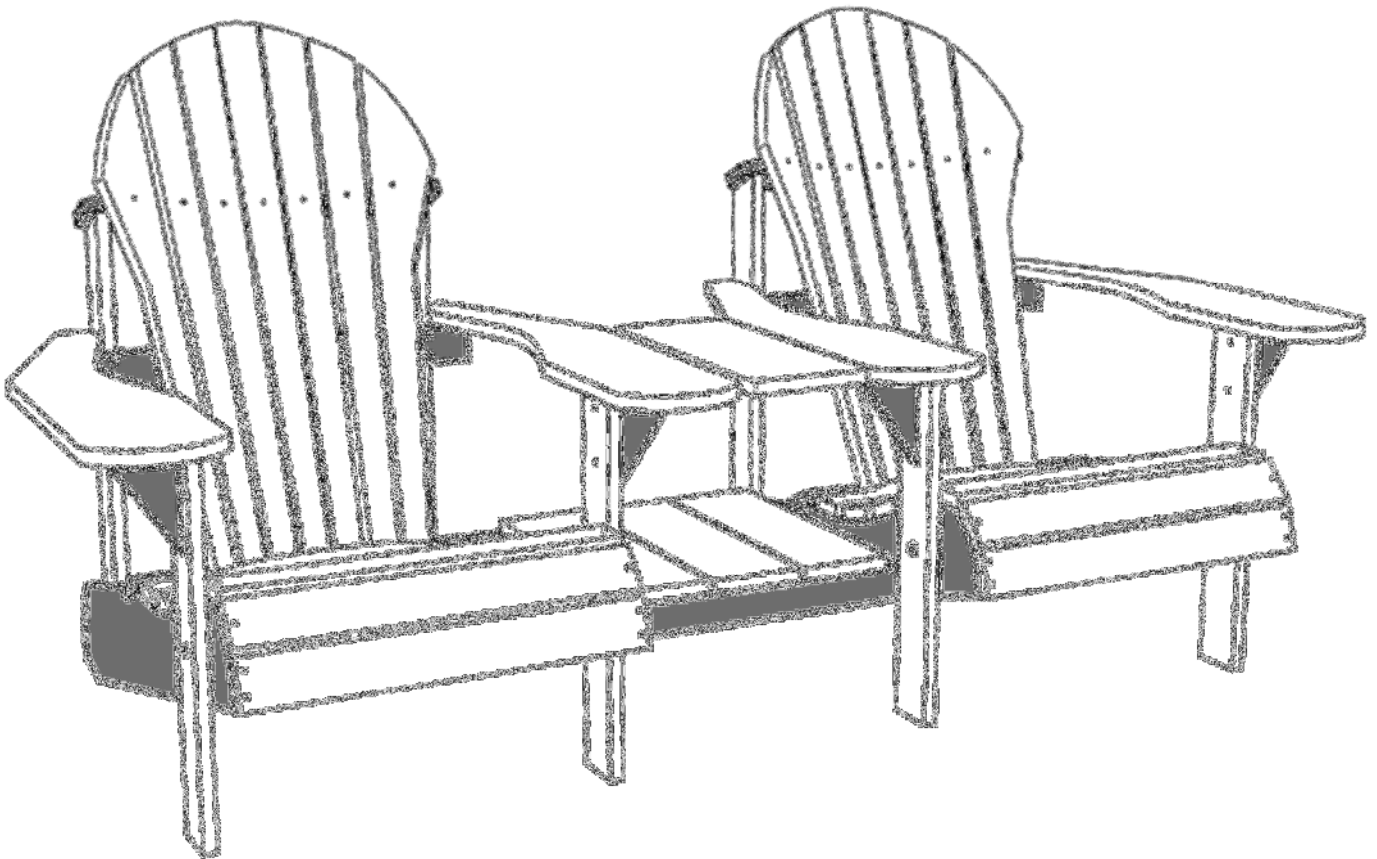
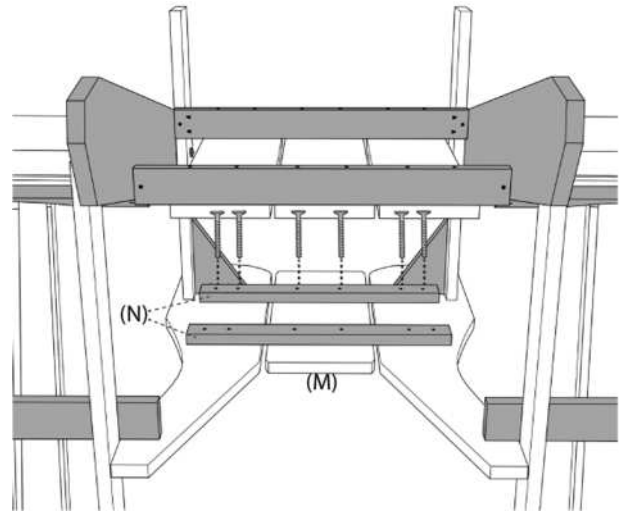
STEP 6. Attach Lower Table

- Position chairs upside down, side-by-side, approx. 20-inches apart.
- Align Lower Table between sides of chairs, directly behind front leg.
- Flush bottom cleat with bottom edge of sides, attach cleat to leg with 1-½ inch screws
- Attach bottom cleat to sides through pocket holes with 1-½ inch screws.
- Flush Lower Table top with top edge of sides, attach through pocket holes using 1-½ inch screws.



STEP 7. Attach Top Table

- Position Top Board (M) between arms.
- Set Top Cleat (N) across underside side of arms tight behind triangle braces, attach with 1-½ inch screws.
- Place second top cleat approx. 6-inches from other top cleat and attach using 1-½ inch screws.
- Turn right side up, and enjoy your new Tete-a-Tete



SAFETY NOTICE:

For your safety do not stand on any part of this chair. It is designed to be used in a seated position only. Periodically throughout the year inspect all chair components and tighten hardware as needed.

♥ Thank you for choosing All Things Cedar ♥