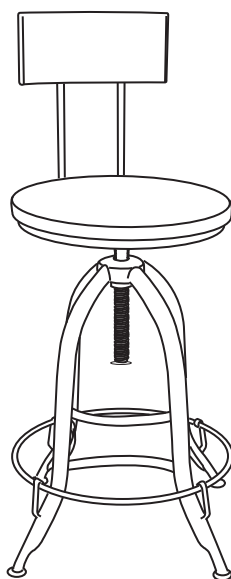
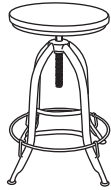
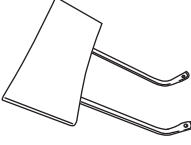

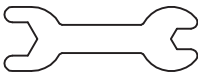


Assembly Instructions

ADJUSTABLE STOOL W/BACK

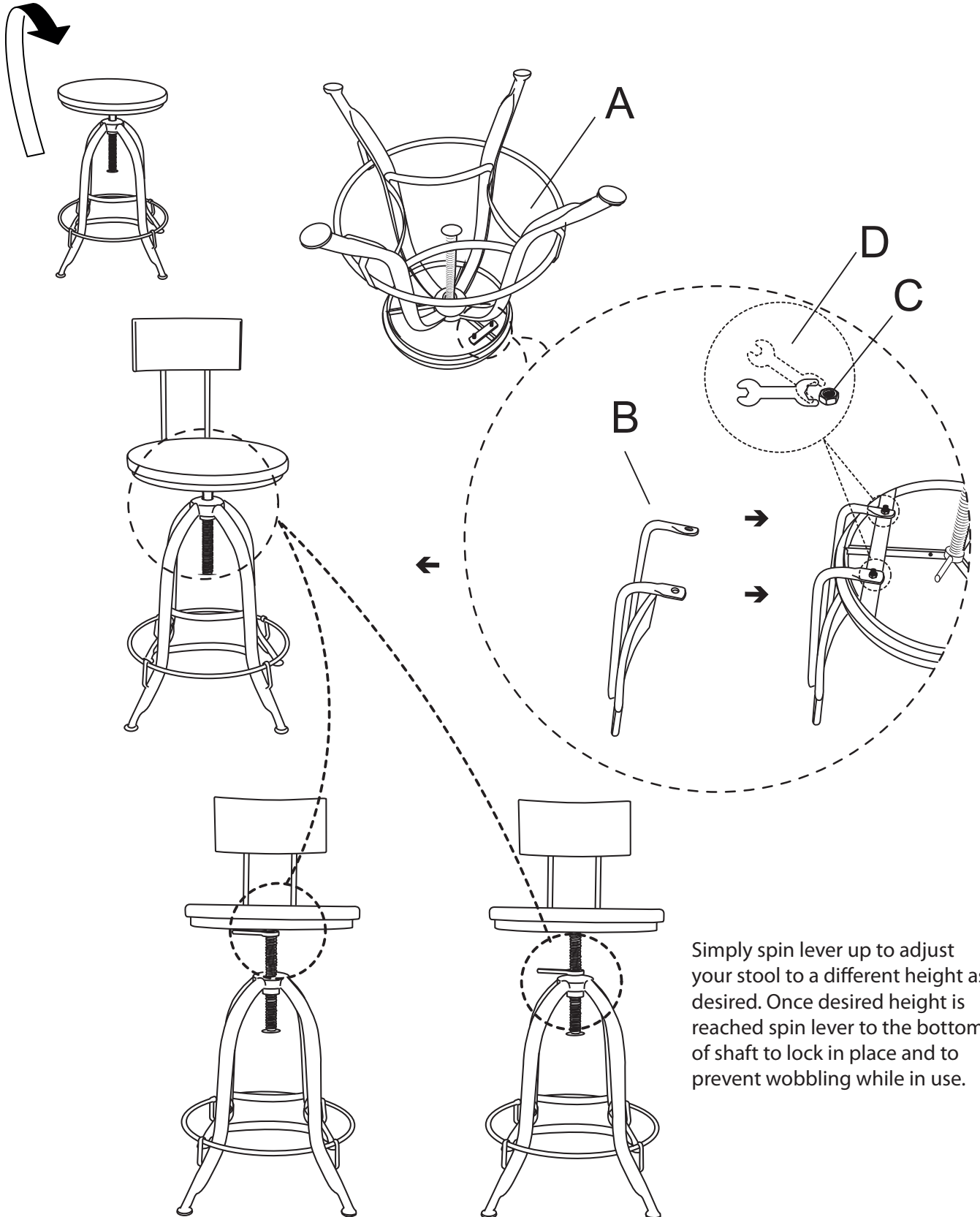


Thank you for purchasing product. This product has been designed for easy assembly and is constructed for durability. Please take the time to read and follow the assembly instructions carefully. If a part or hardware is missing or you have any difficulties in assembling this product, please contact us .

NO.	PART	DESCRIPTION	Q'TY	NO.	PARTS	DESCRIPTION	Q'TY
A		Base	1PC	B		Back Rest	1PC
C		Hexagonal Nut 6MM	2PCS	D		Open-end Wrench	1PC

Assembly Instructions

ADJUSTABLE STOOL W/BACK



Simply spin lever up to adjust your stool to a different height as desired. Once desired height is reached spin lever to the bottom of shaft to lock in place and to prevent wobbling while in use.