

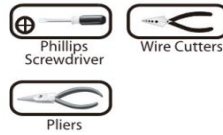
Platter Light



INSTRUCTIONS PERTAINING TO RISK OF FIRE OR INJURY TO PERSONS
READ ALL INSTRUCTIONS

IMPORTANT SAFETY INSTRUCTIONS
SAVE THESE INSTRUCTIONS

TOOLS AND MATERIALS REQUIRED:



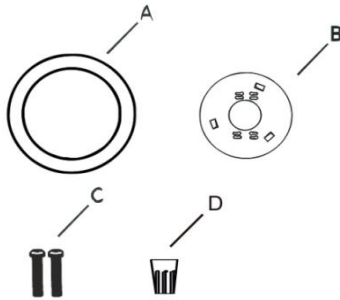
When wiring, should consult local licensed electrician to meet National Electrical Code or local Electrical code.

SAFETY PRECAUTIONS:

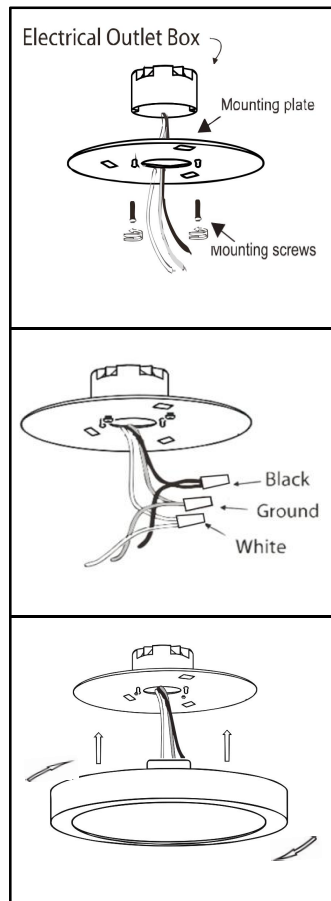
1. TURN OFF ELECTRICAL POWER BEFORE STARTING INSTALLATION OF LIGHT FIXTURE.
2. THIS PRODUCT MUST BE INSTALLED IN ACCORDANCE WITH THE APPLICABLE INSTALLATION CODE BY A PERSON FAMILIAR WITH THE CONSTRUCTION AND OPERATION OF THE PRODUCT AND THE HAZARDS INVOLVED.
3. CAUTION-RISK OF ELECTRIC SHOCK. CONSULT A QUALIFIED ELECTRICIAN TO ENSURE CORRECT BRANCH CIRCUIT CONDUCTOR.

PACKAGE CONTENTS

| PART | DESCRIPTION | QTY |
|------|-----------------|-----|
| A | LED light | 1 |
| B | Mounting plate | 1 |
| C | Mounting screws | 2 |
| D | Wire nut | 3 |



FLUSH MOUNT



1. Prior to installation, install mounting plate into the junction box with mounting screws. Drive screws completely to the end of the junction box.

2. Connect supply wires to wires on fixture with wire nuts. Connect white to white, black to black and copper wire to copper wire as grounding connection.

3. Push the fixture back convex area into the junction box space room, then turn towards the arrow direction until fastened.