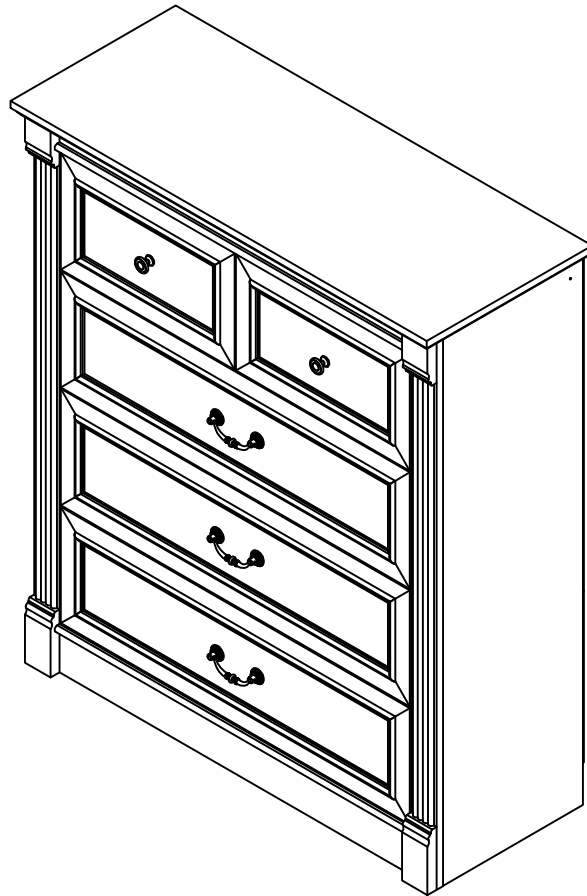
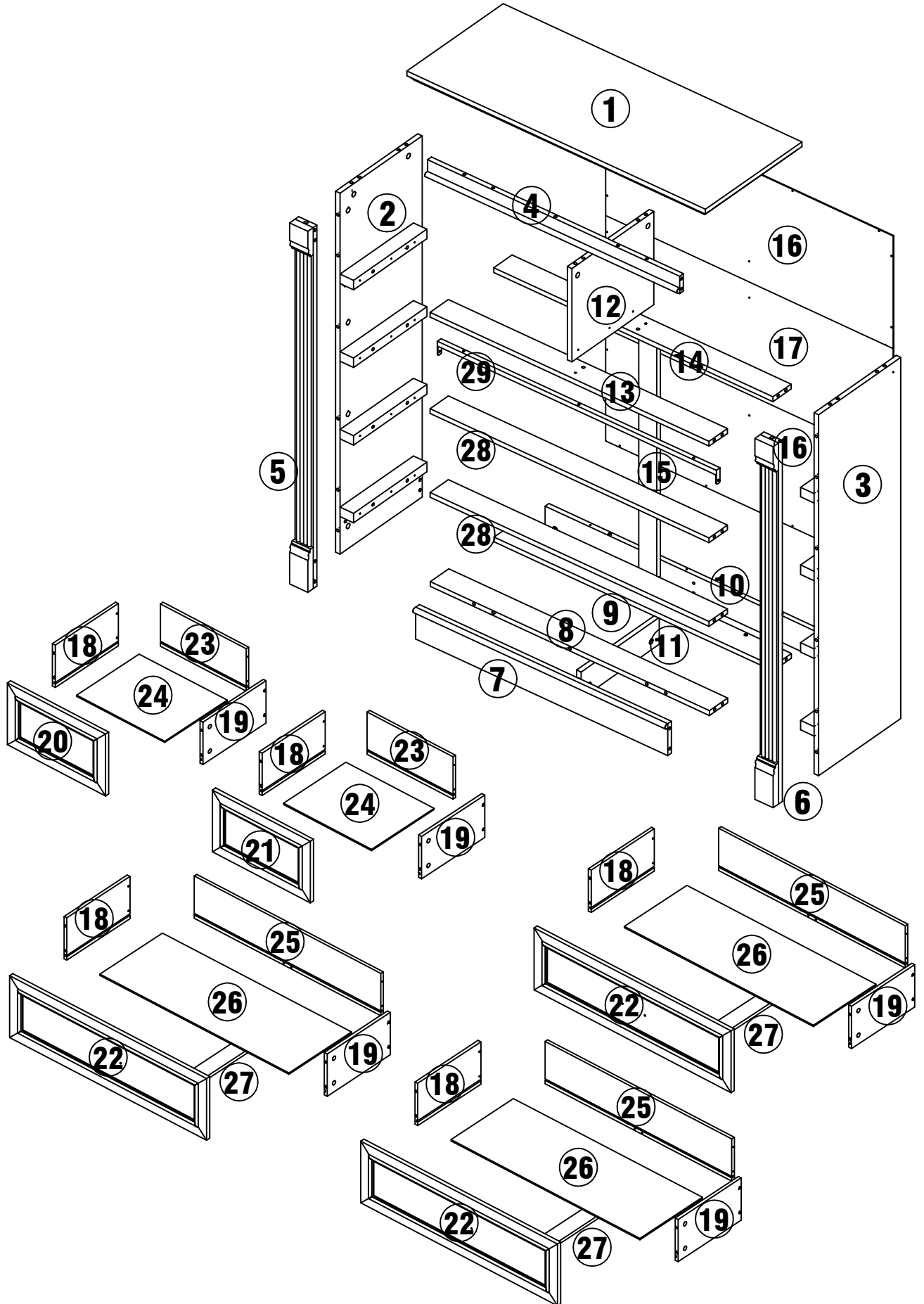


ASSEMBLY INSTRUCTIONS



PACKAGE INCLUDE

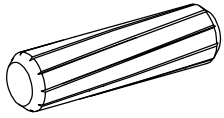


PACKAGE INCLUDE

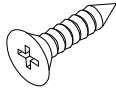
CODE	DESCRIPTION	QTY
1	Top Panel	1
2	Left Side Panel	1
3	Right Side Panel	1
4	Upper Crosspiece	1
5	Left Trim Panel	1
6	Right Trim Panel	1
7	Front Footboard	1
8	Front Bottom Panel	1
9	Rear Bottom Panel	1
10	Back Footboard	1
11	Bottom Supported Panel	1
12	Upper Middle Vertical Panel	1
13	Upper Front Crossbar	1
14	Upper Rear Crossbar	1
15	Back Vertical Panel	1
16	Upper And Lower Back Panel	2
17	Middle Back Panel	1
18	Drawer Left Side Panel	10
19	Drawer Right Side Panel	10
20	Upper Left Drawer Top Panel	1
21	Upper Right Drawer Top Panel	1
22	Lower Drawer Top Panel	3
23	Upper Drawer Back Panel	2
24	Upper Drawer Bottom Panel	2
25	Lower Drawer Back Panel	3
26	Lower Drawer Bottom Panel	3
27	Drawer Bottom Strip	3
28	Fixed Strip	2
29	Iron Tube	1

PACKAGE CONTENT

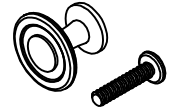
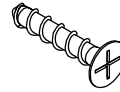
Ø8X30MM



Ø3.5X12MM



4X35MM



A

47X+2

B

52X+2

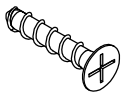
C

31X+2

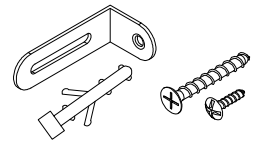
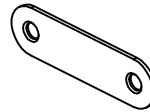
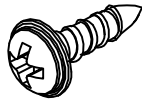
D

2X

4X30MM



Ø3X12MM



E

3X

F

32X+2

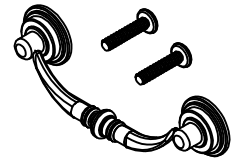
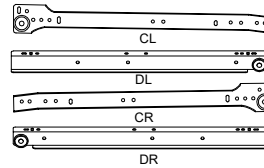
G

4X

H

2X

Ø15X10MM



J

60X+2

K

60X+2

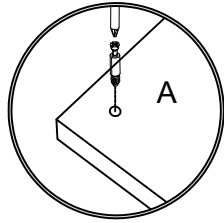
L

5X

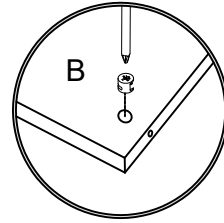
M

3X

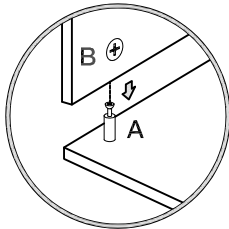
How to use the cam lock system



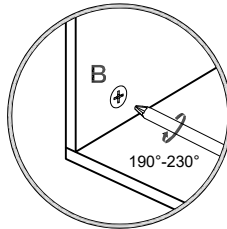
1. Screw cam bolt into panel



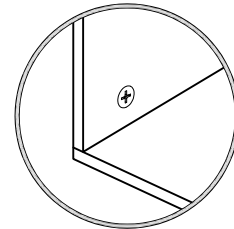
2. Push cam into panel - arrow feature on cam top points to panel edge



3. Align cam bolt(s) with cam(s) and insert all the way into cross-bored hole(s)

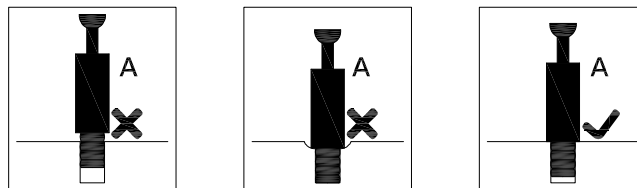
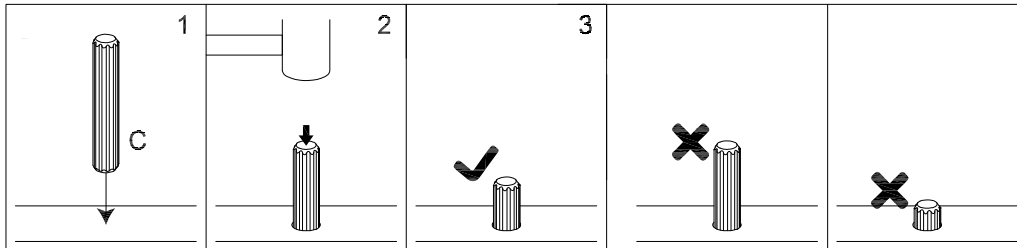


4. Rotate cam(s) clockwise 190°-230° to lock panels together



5. Panels should be tight against each other and connection should be rigid

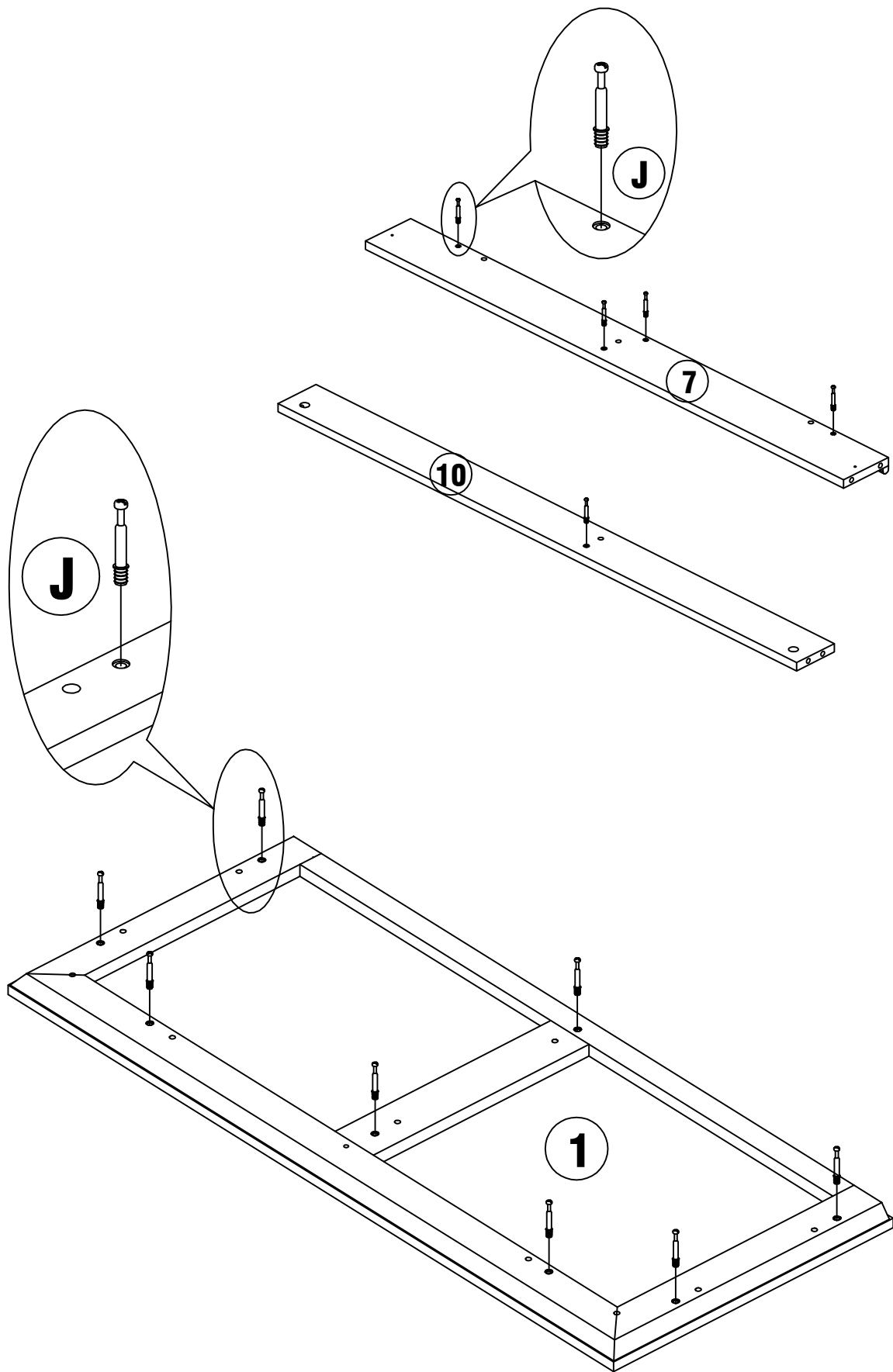
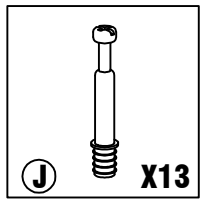
Insert the wood dowel [C] at least half way by tapping lightly with a rubber mallet, IF NECESSARY.



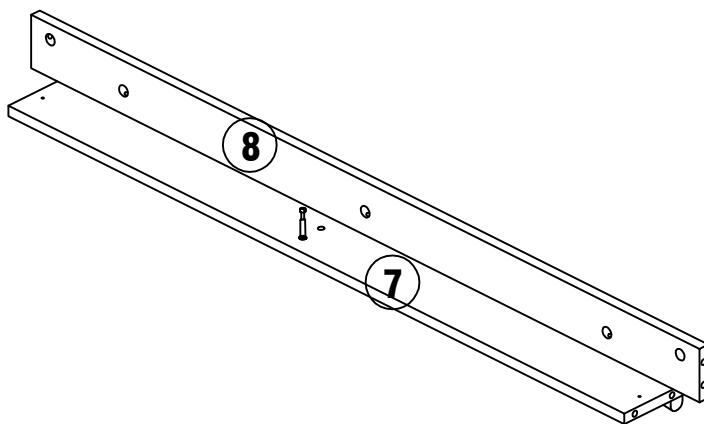
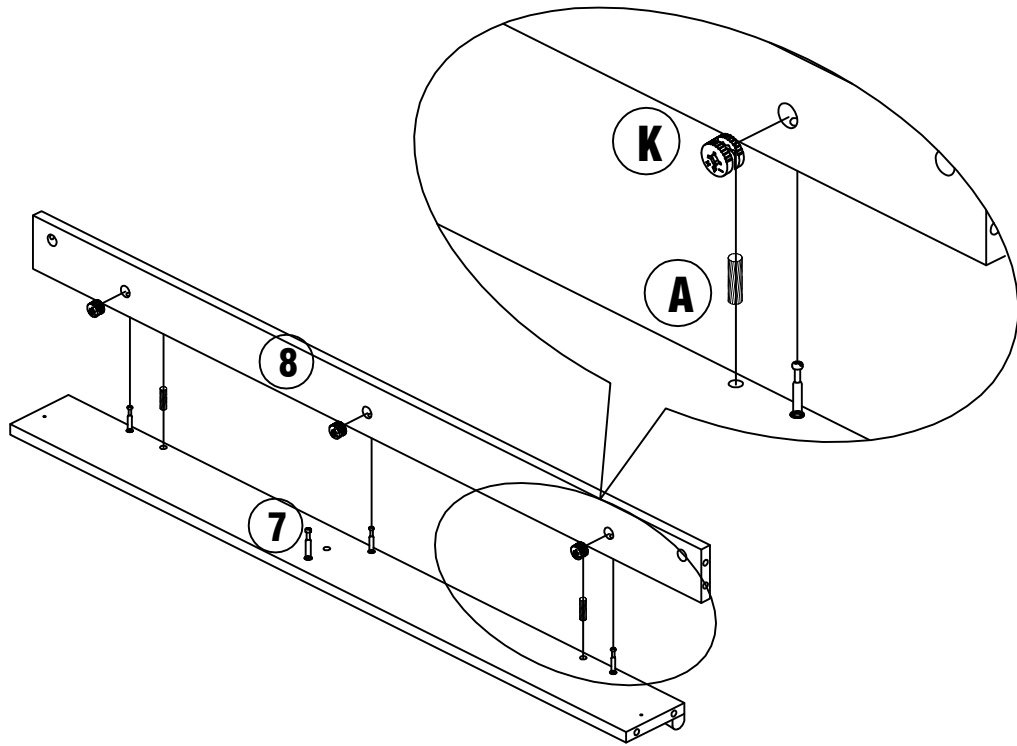
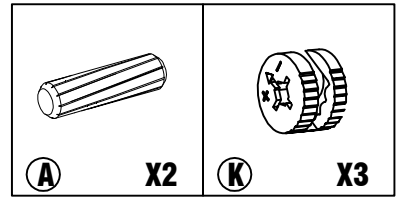
⚠ WARNING

- Unit must be placed on a level surface or leveled with included hardware (when applicable).
- Do not sit or stand on or allow children to climb, sit or stand on the assembled product.
- For safety reasons, it is imperative that this unit be mounted to the wall.
- Do not use without installing the tip restraint.
- Unit can tip over causing severe injury or death.
- Do not exceed the recommended weight limits.
- Evenly distribute the weight on each level and always keep the heavier loads on the bottom.
- Before cutting, drilling or hammering into any wall or floor surface, verify the location of electrical, plumbing and gas lines. Cutting may cause serious injury.


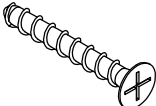
STEP 1

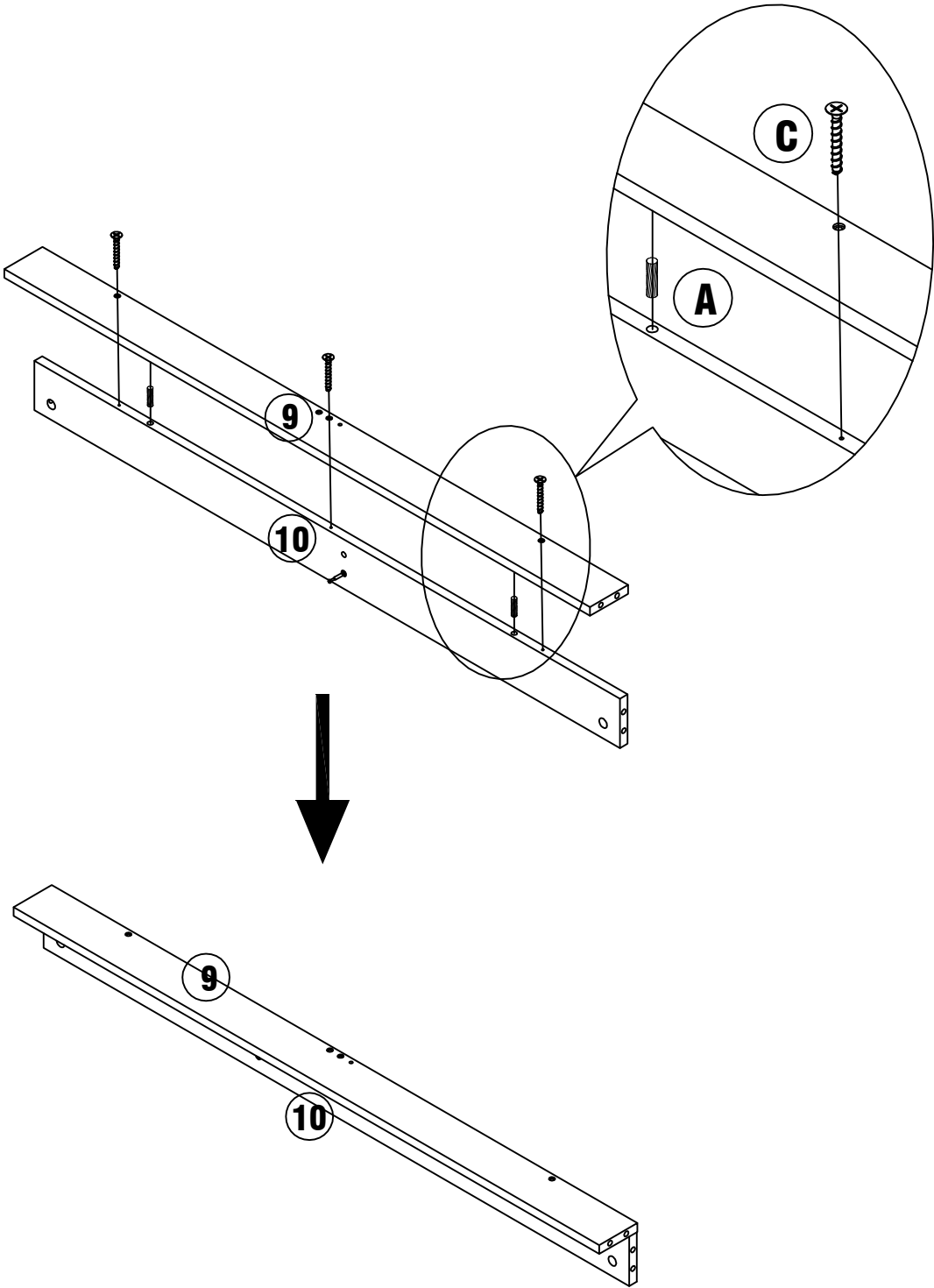


STEP 2

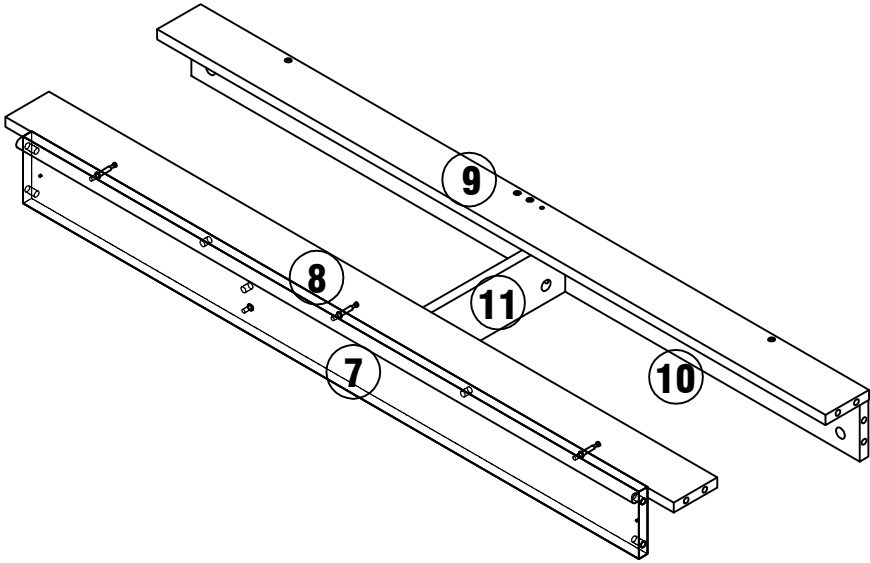
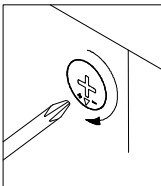
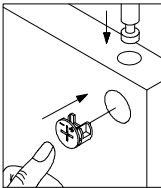
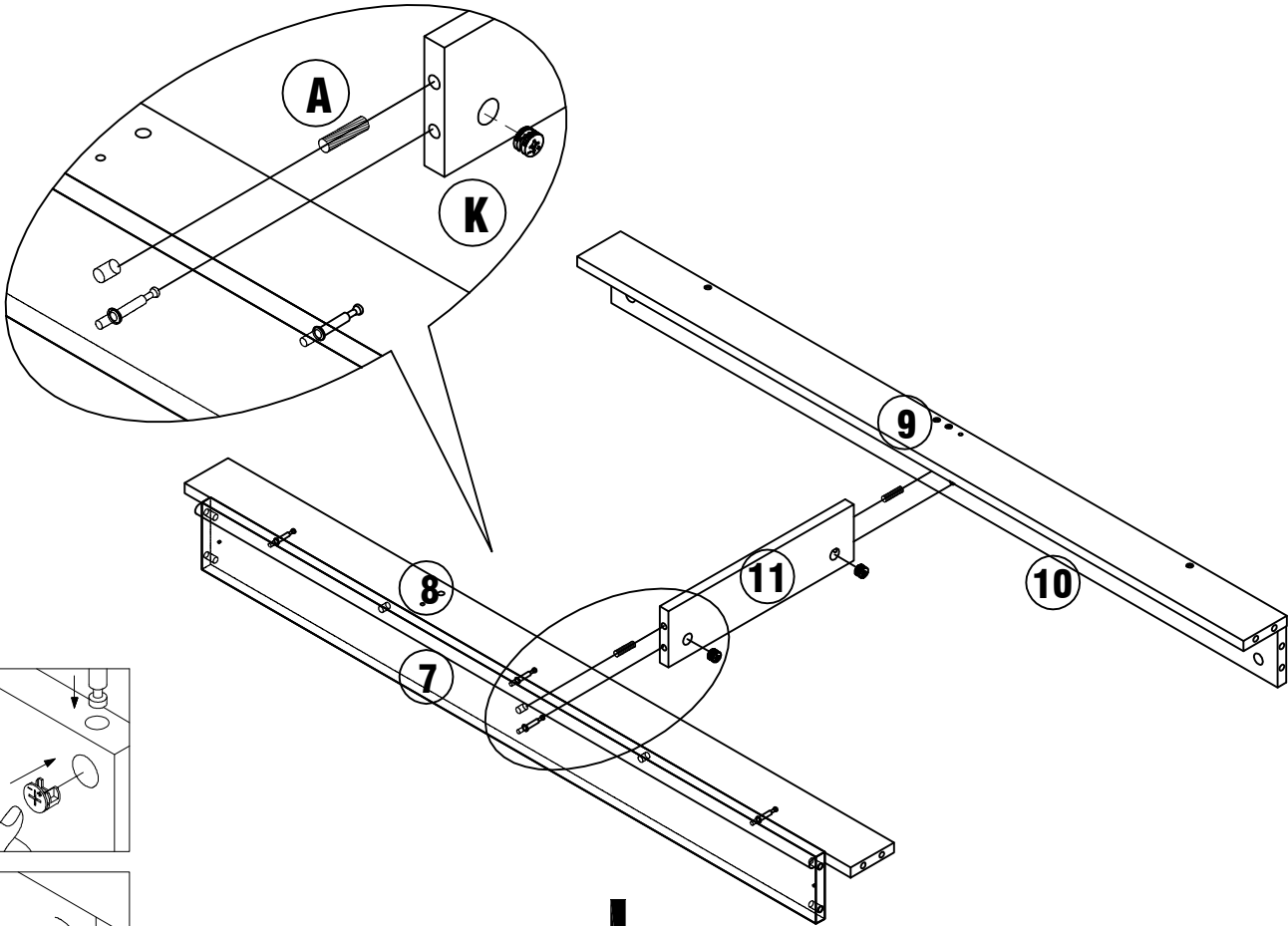
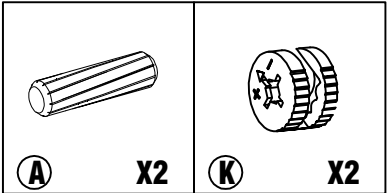


STEP 3

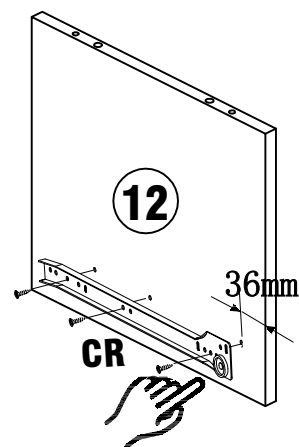
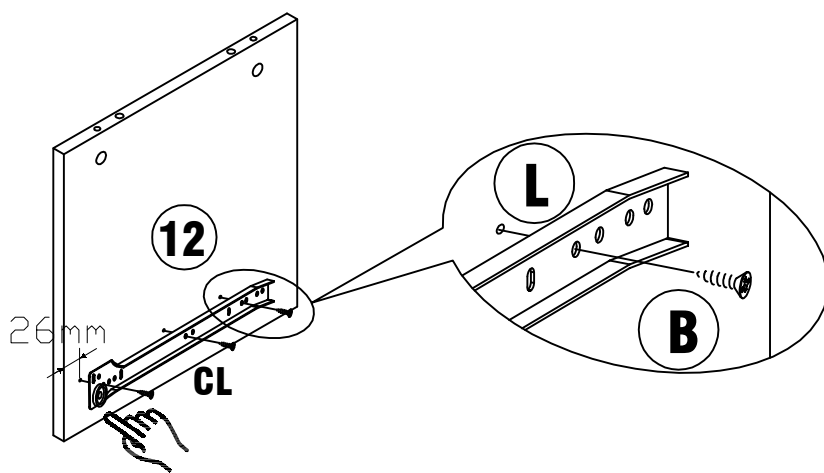
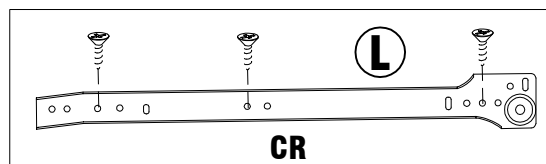
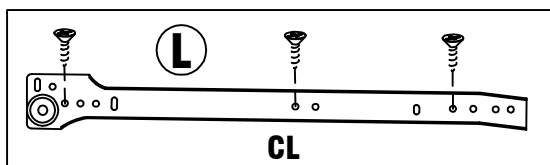
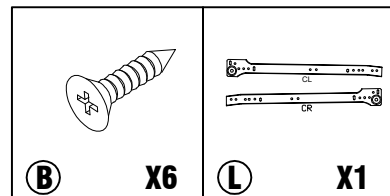
	
A	X2
C	X3



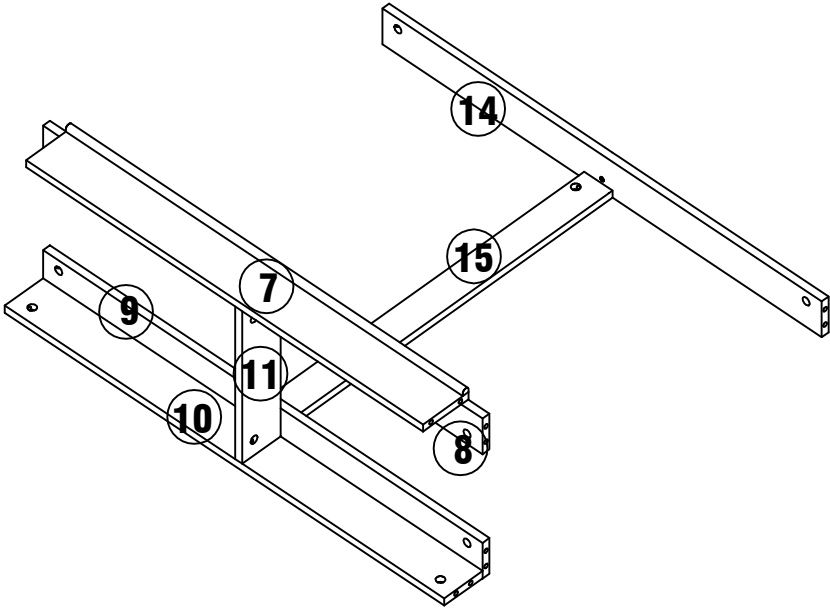
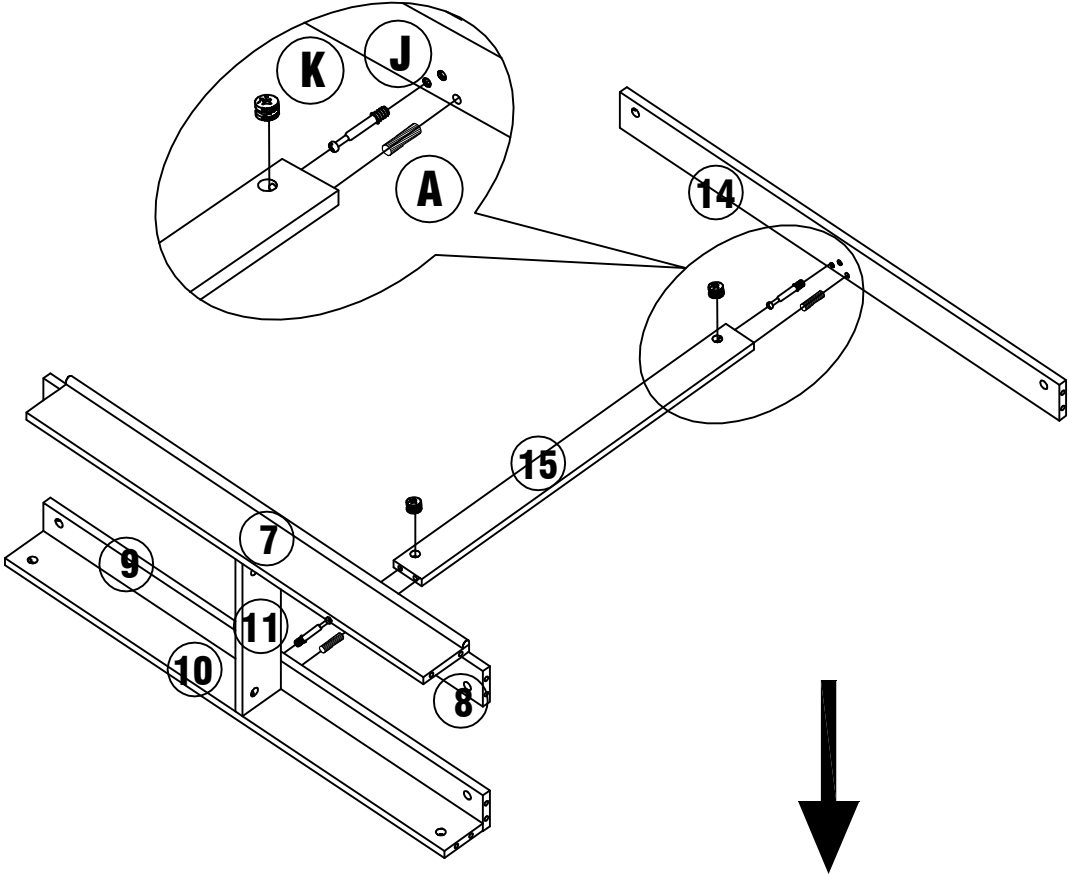
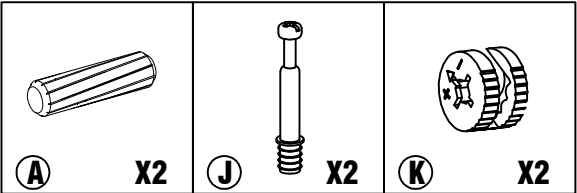
STEP 4



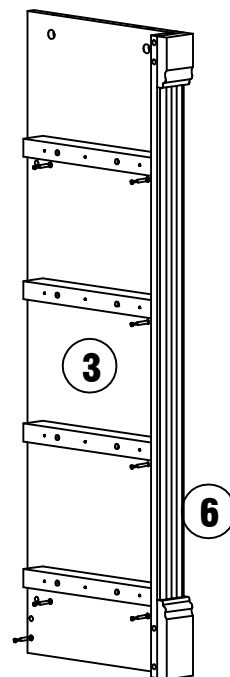
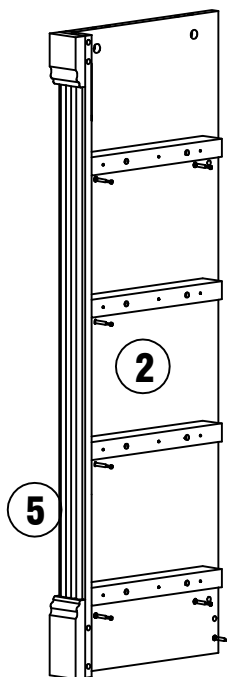
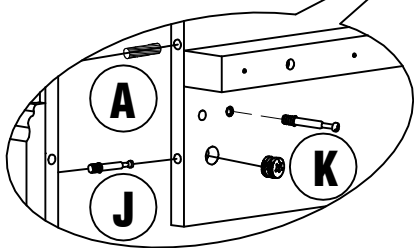
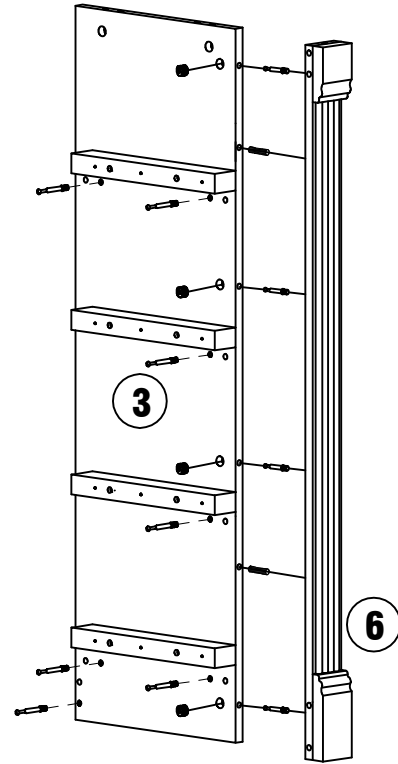
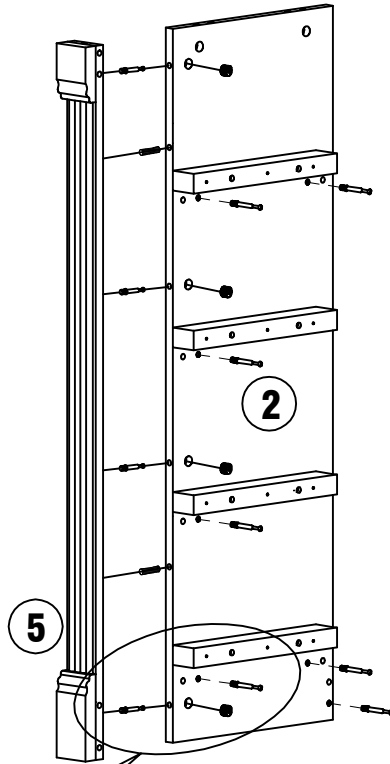
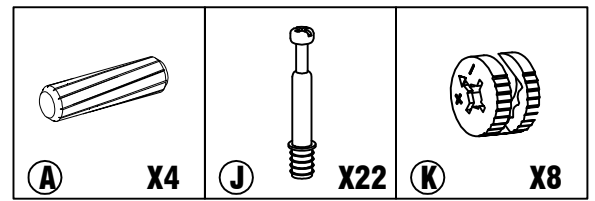
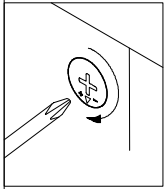
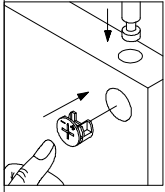
STEP 5



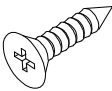
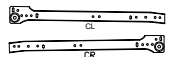
STEP 6

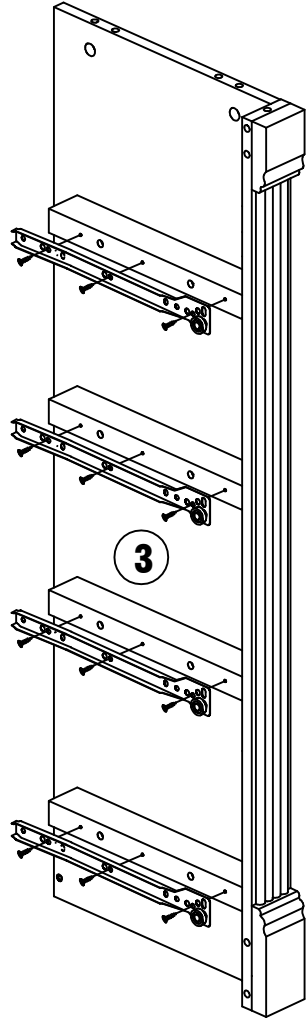
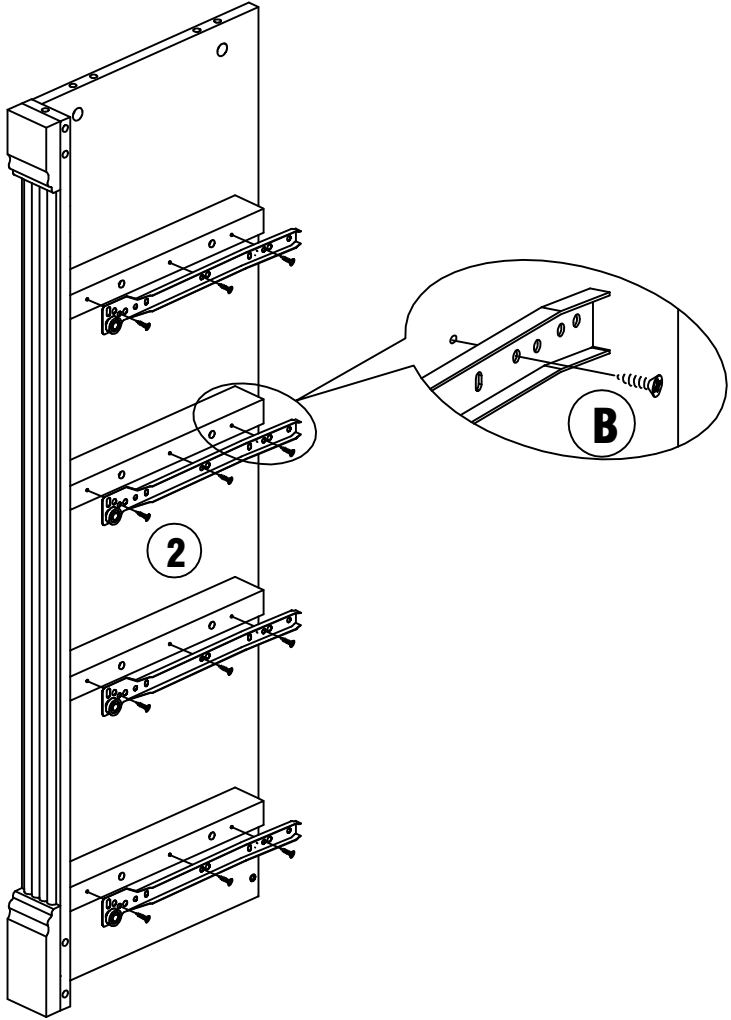
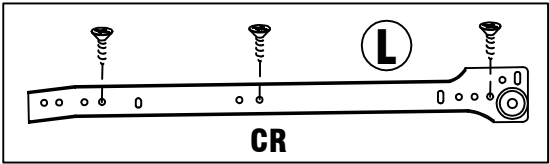
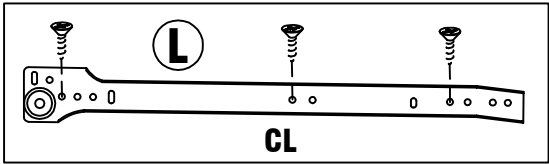


STEP 7

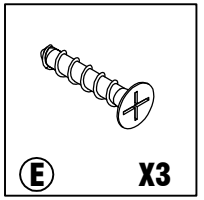


STEP 8

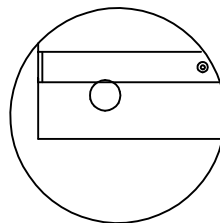
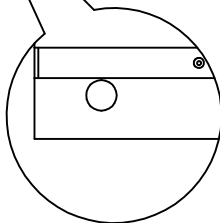
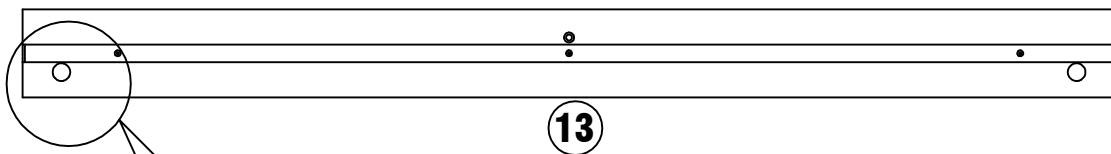
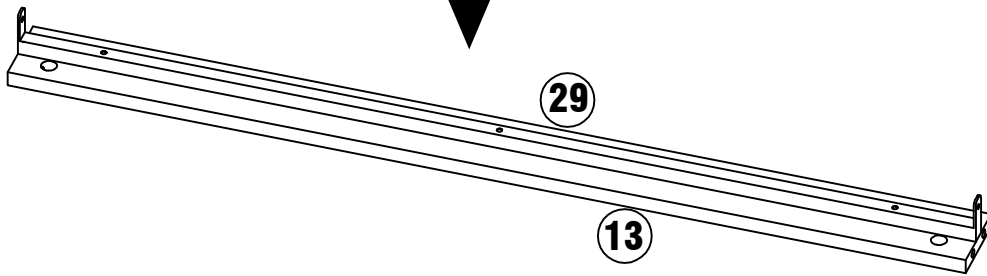
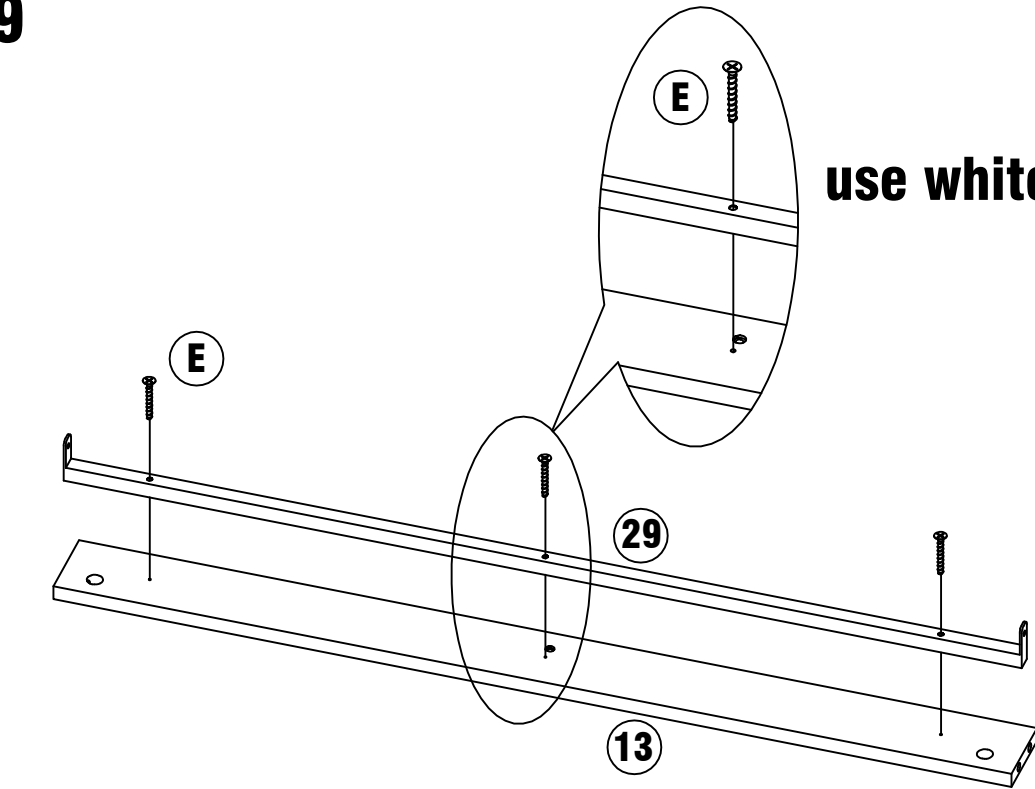
	
(B)	X24
(L)	X4




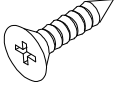

STEP 9

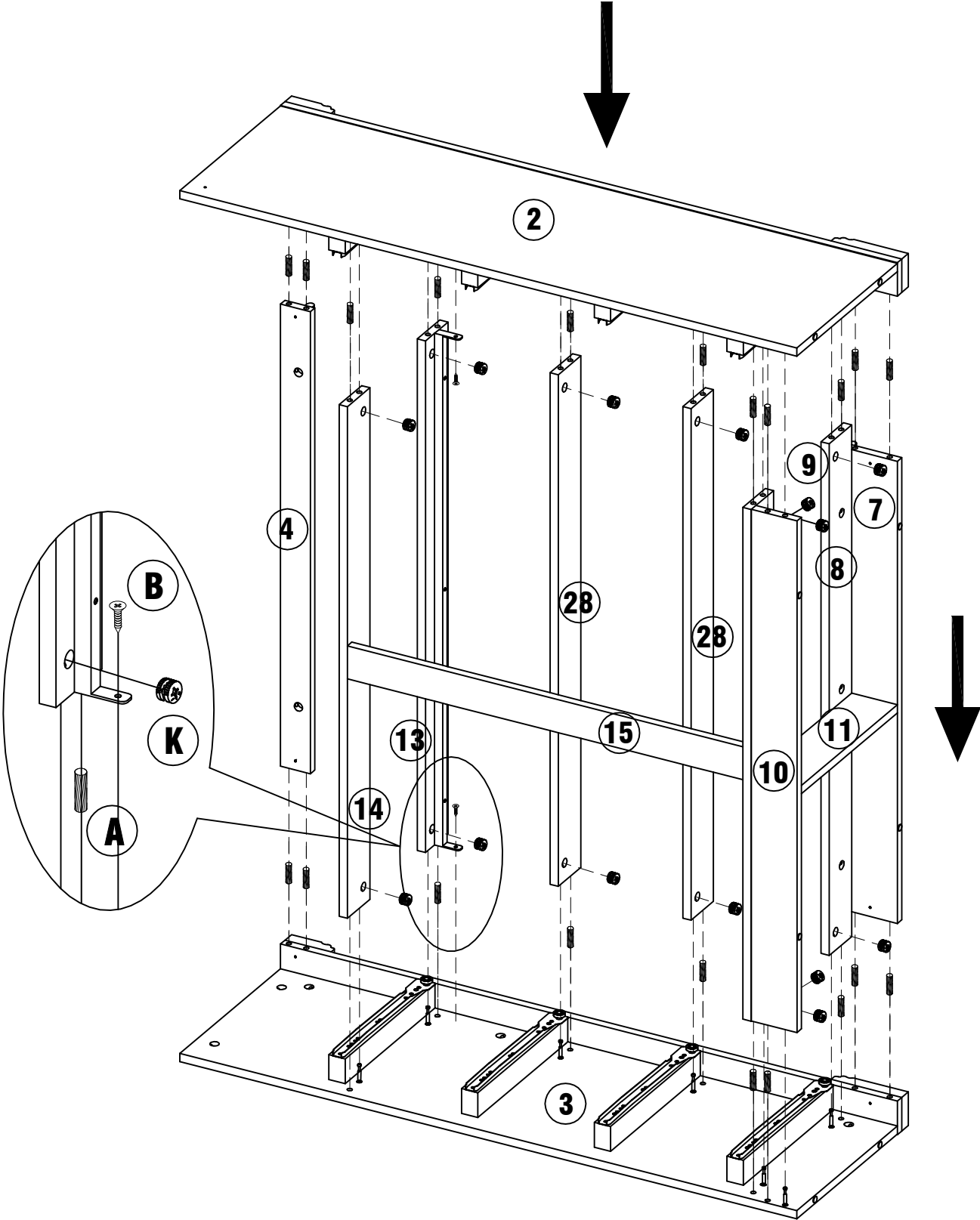


use white screw E

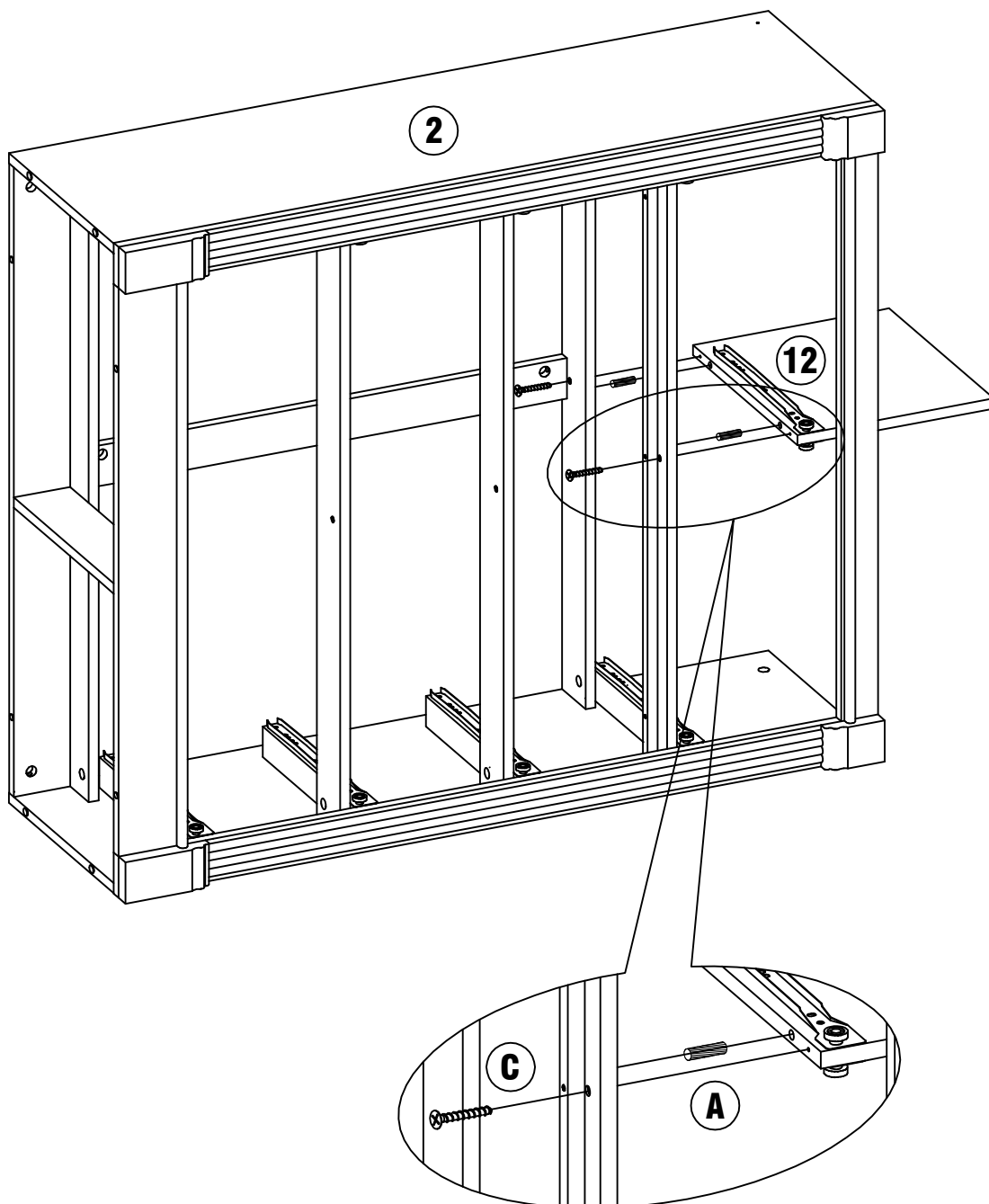
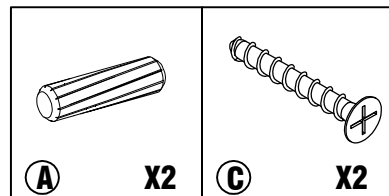


STEP 10

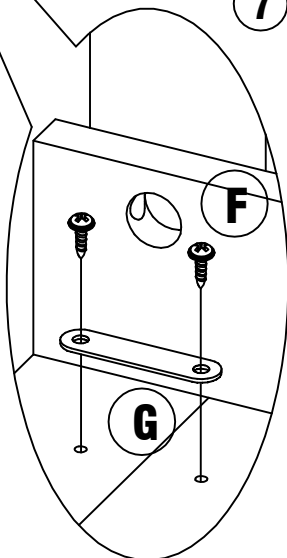
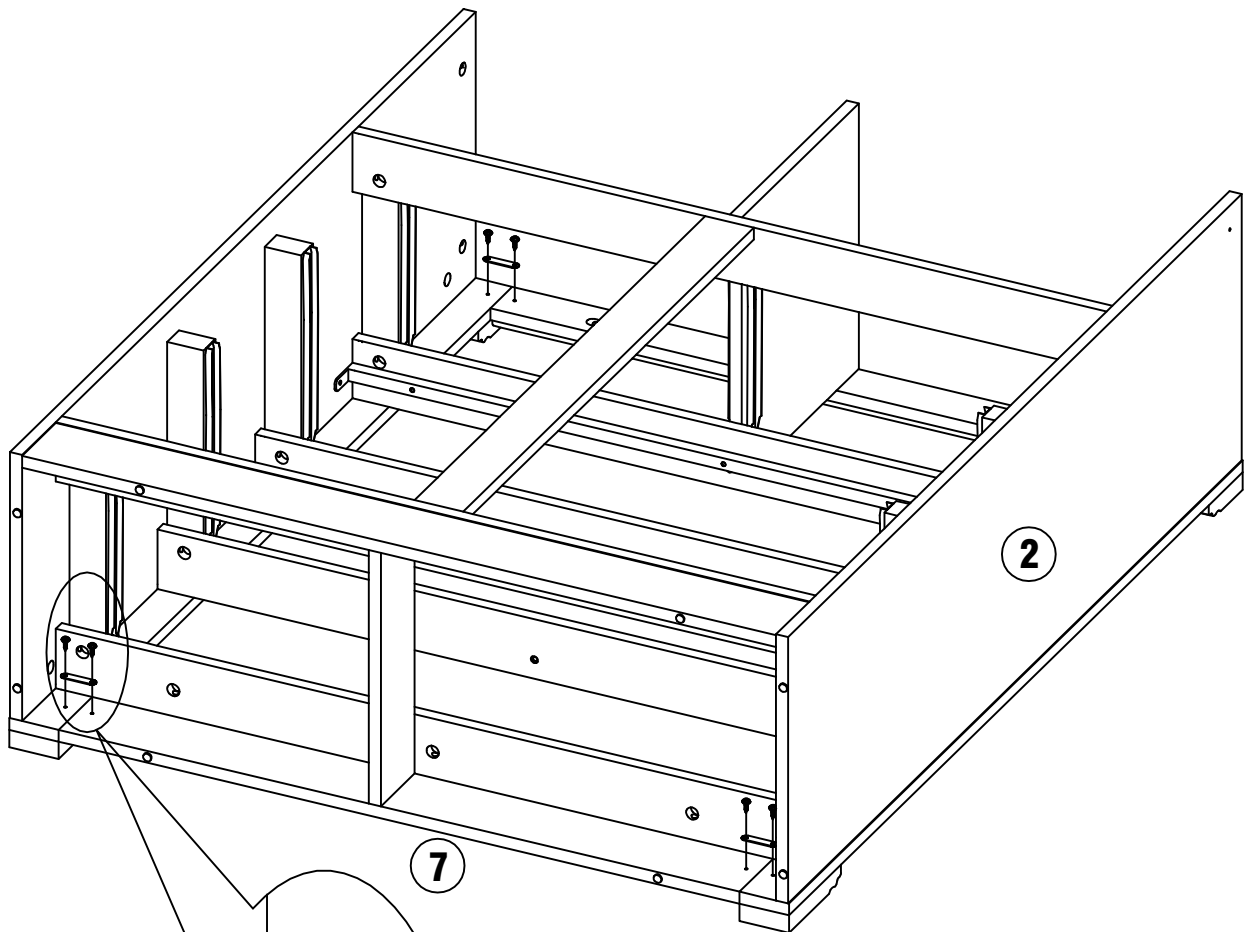
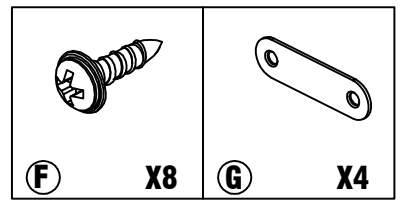
		
(A) X22	(B) X2	(K) X14



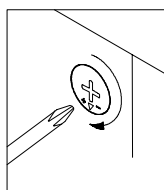
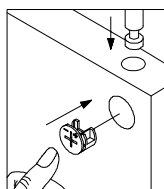
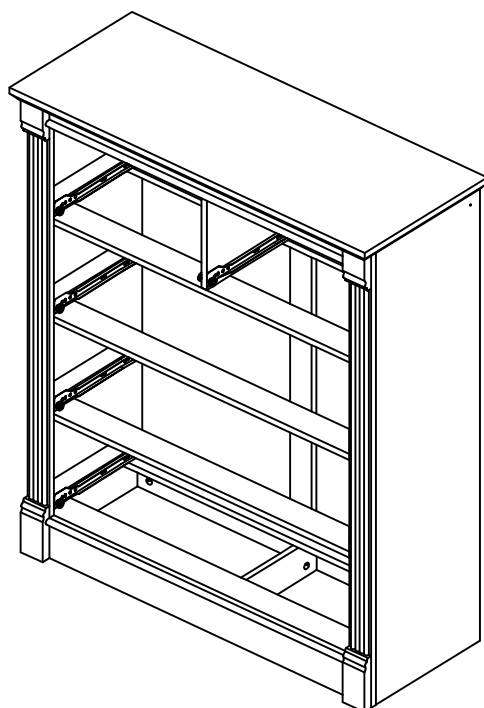
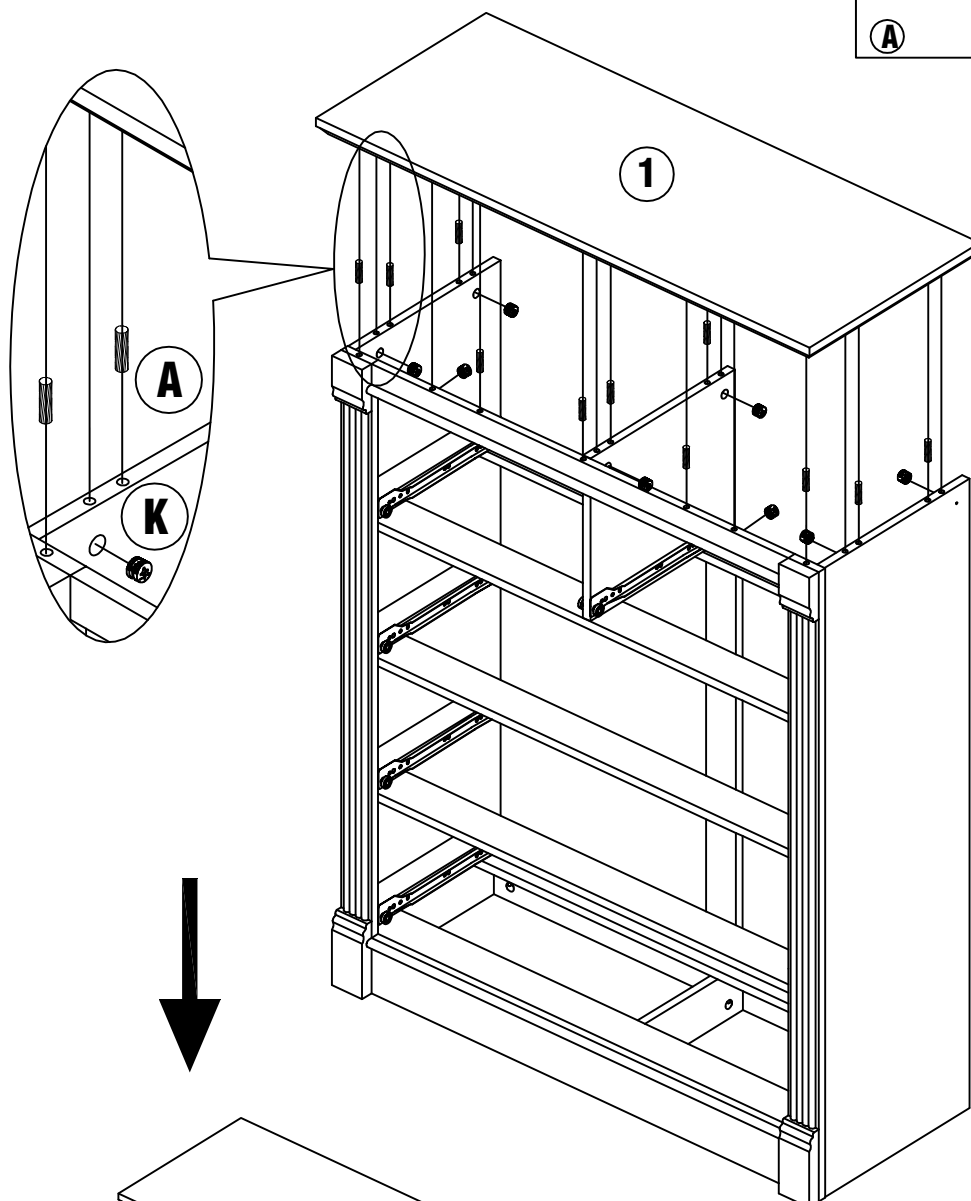
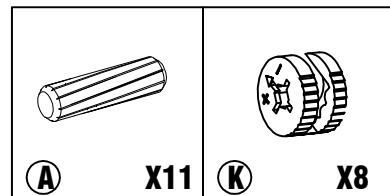
STEP 11



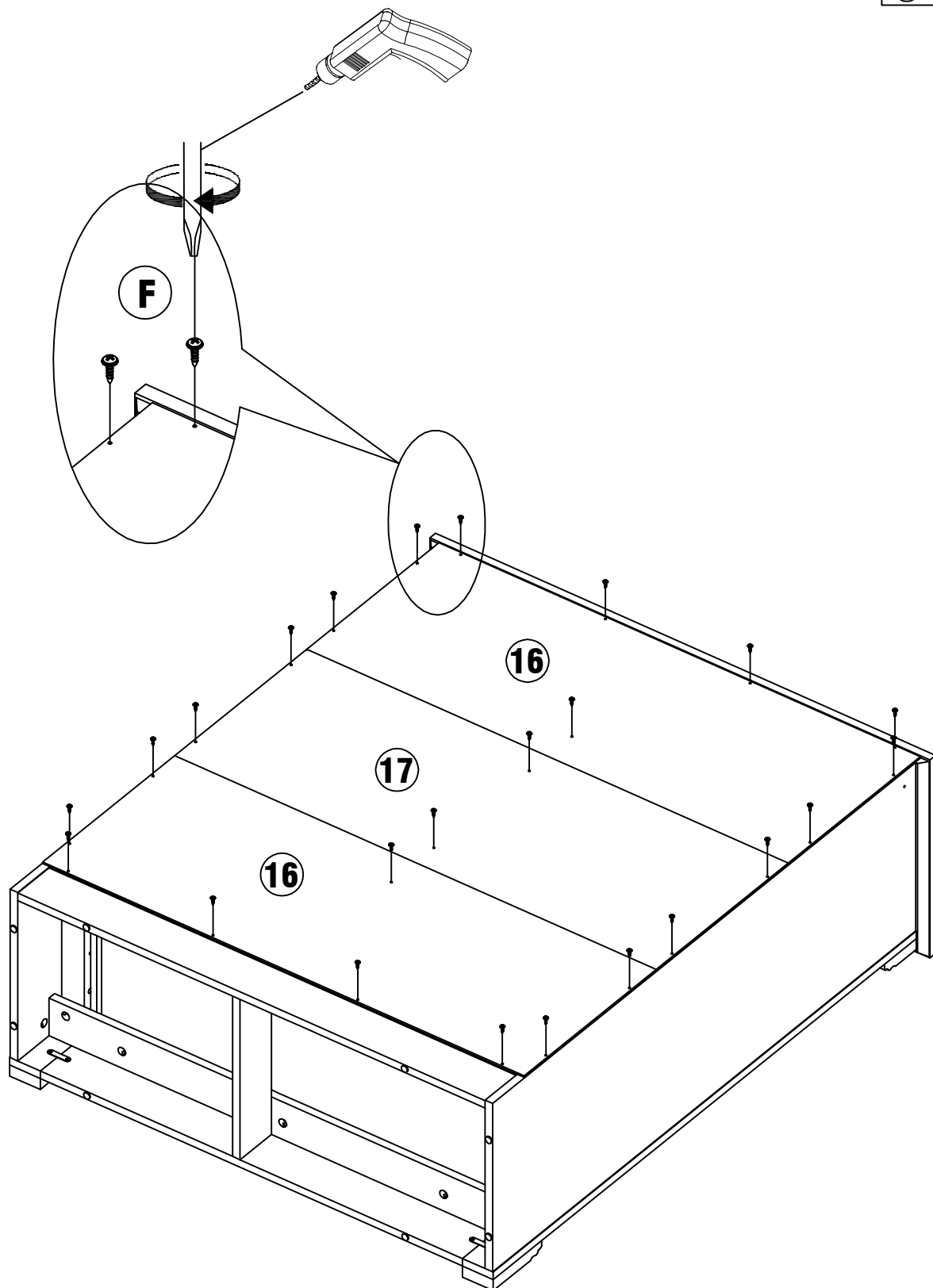
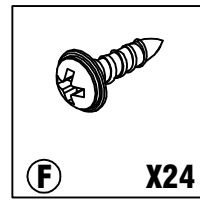
STEP 12



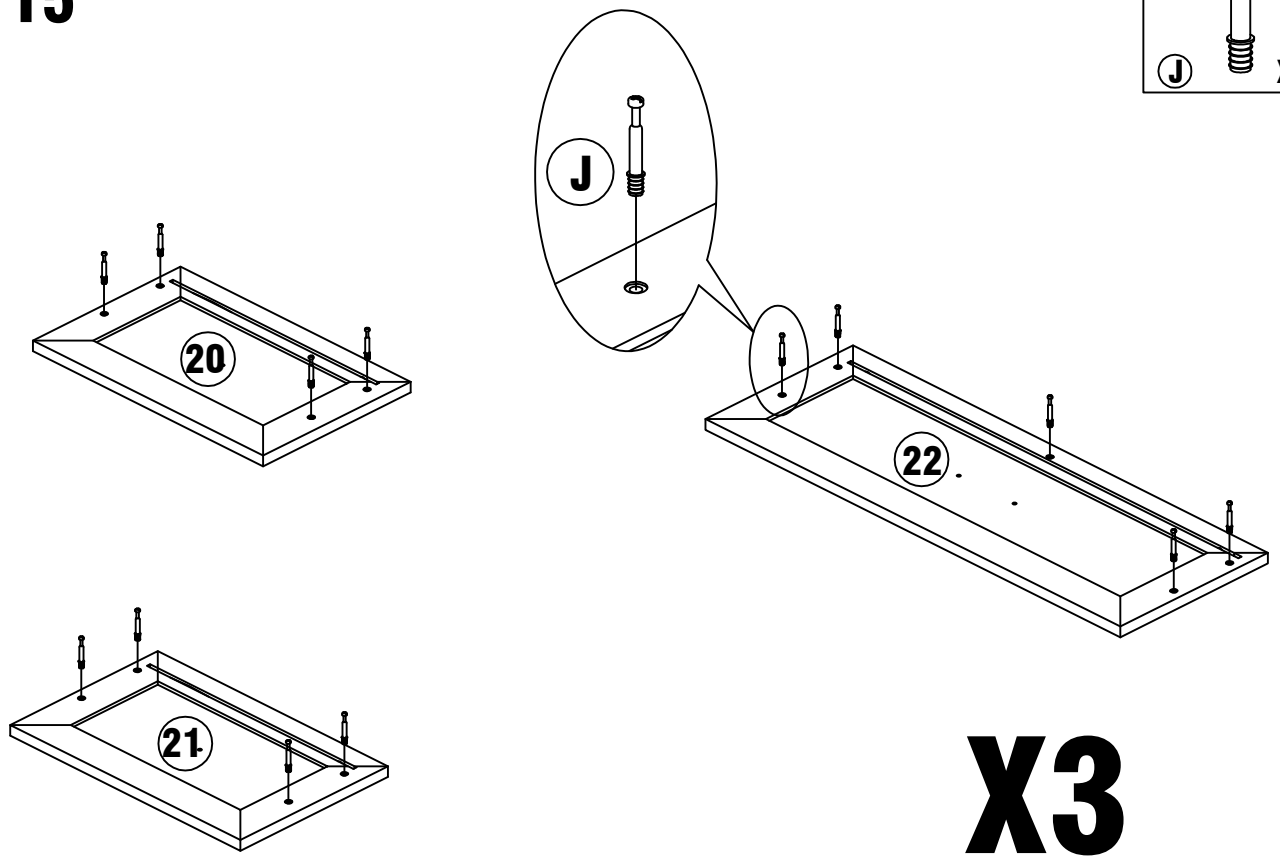
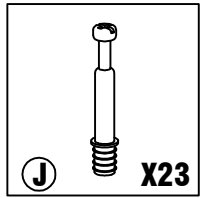
STEP 13



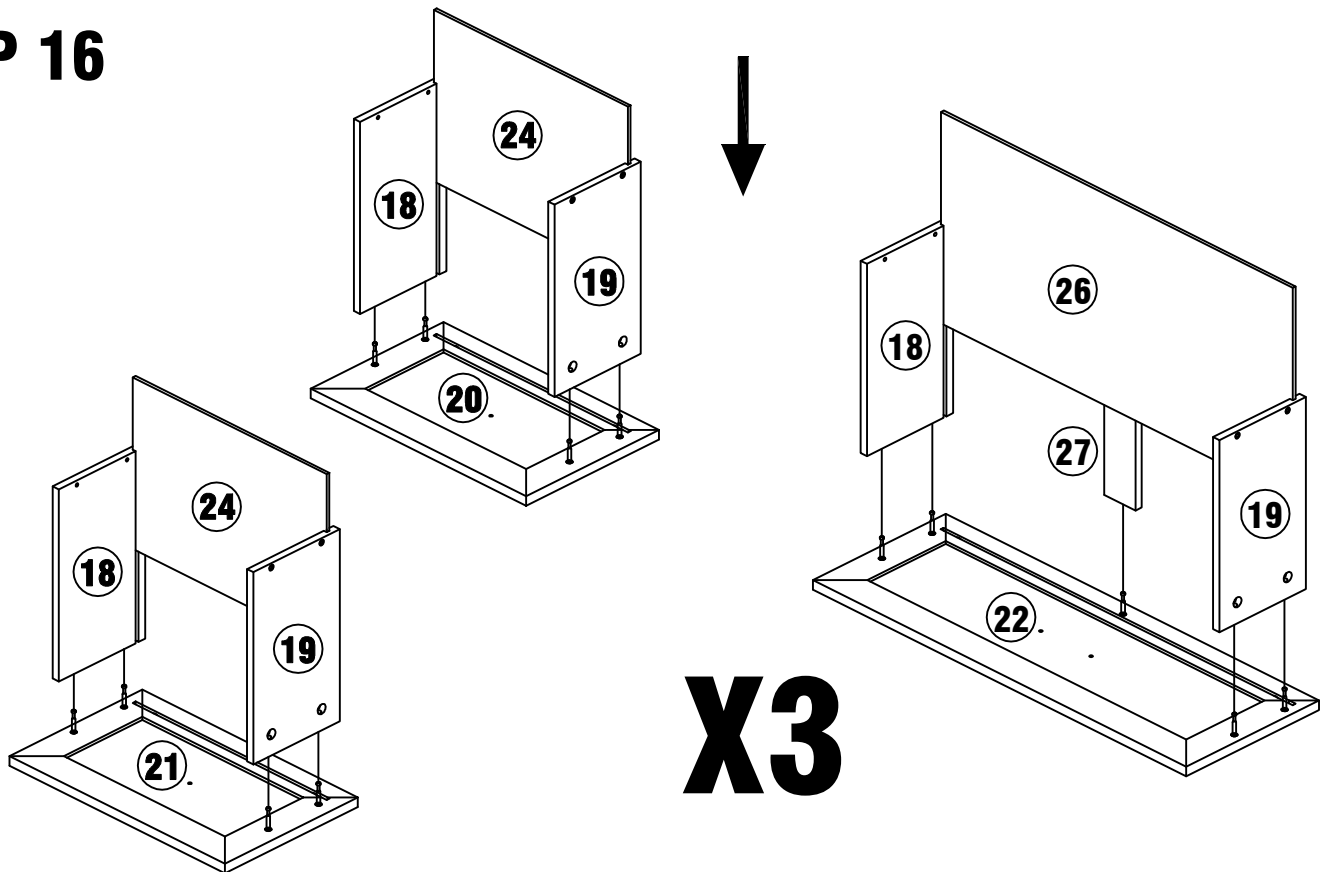
STEP 14



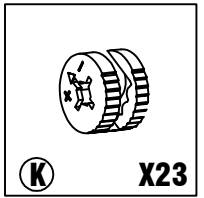
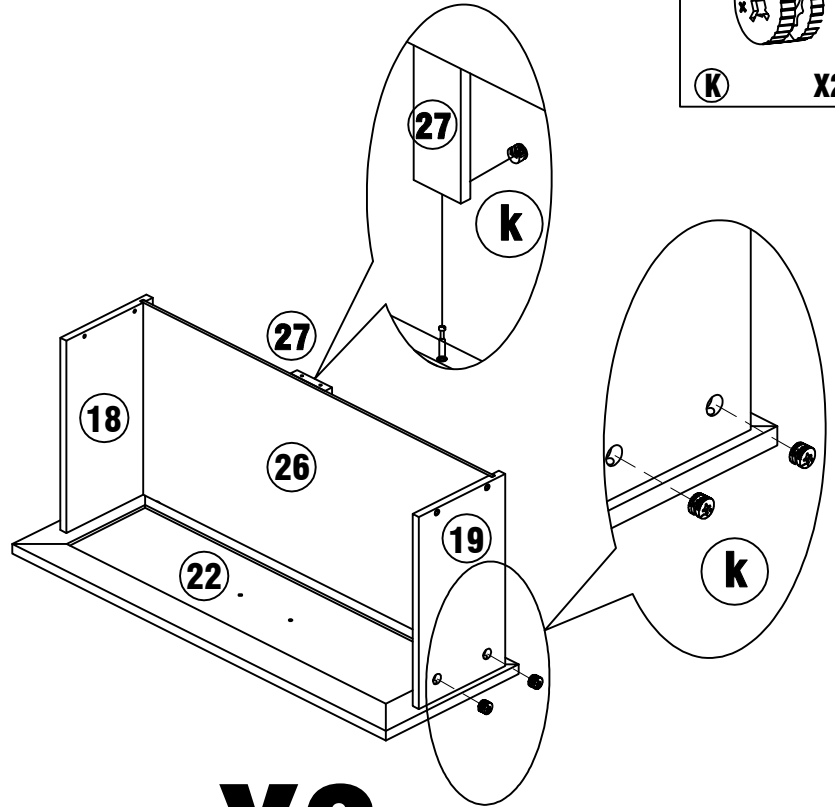
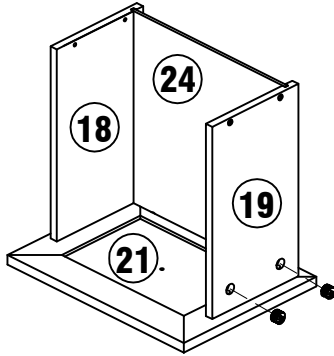
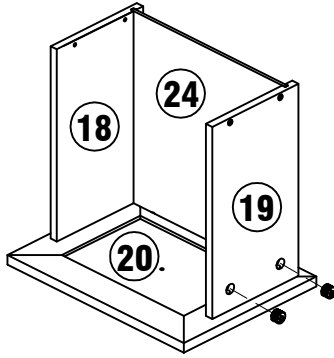
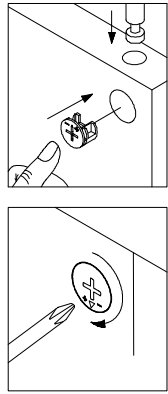
STEP 15



STEP 16

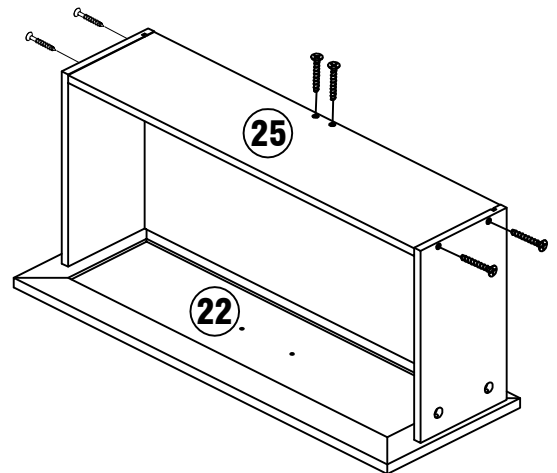
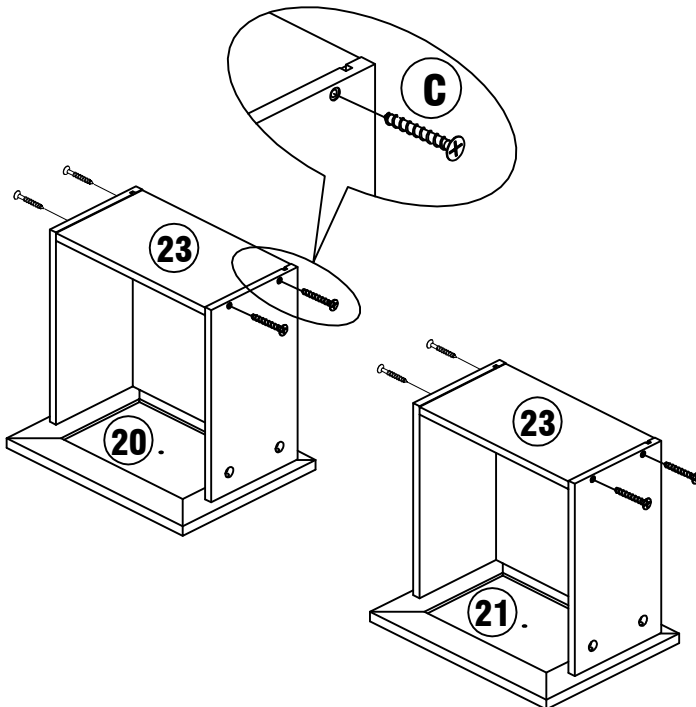
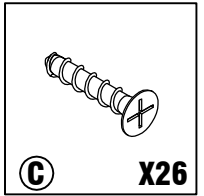


STEP 17



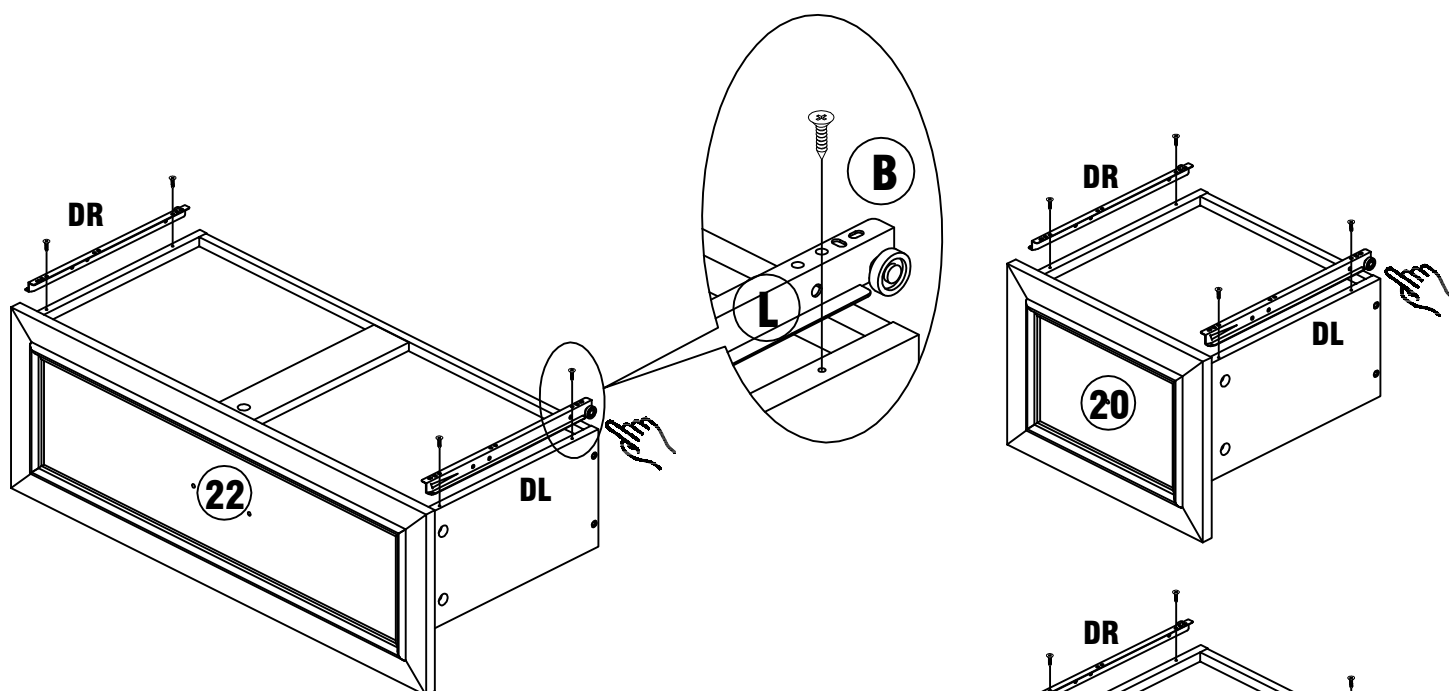
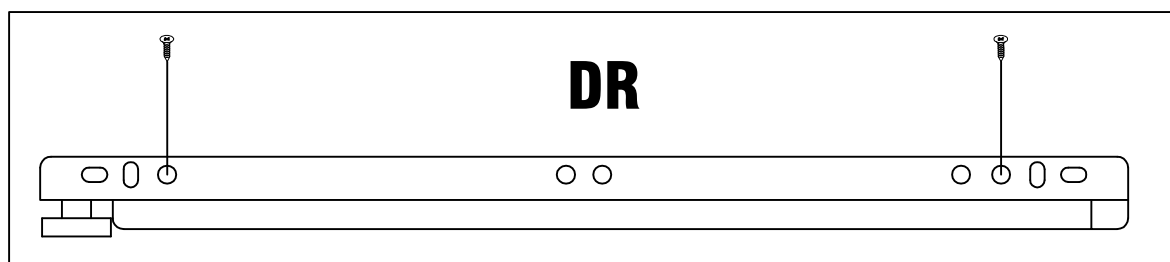
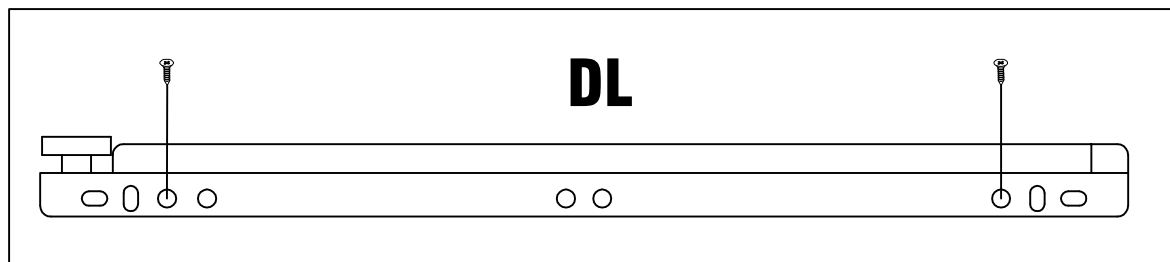
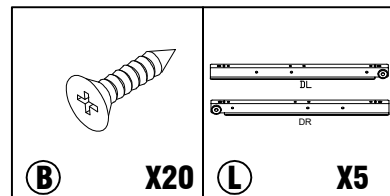
X3

STEP 18

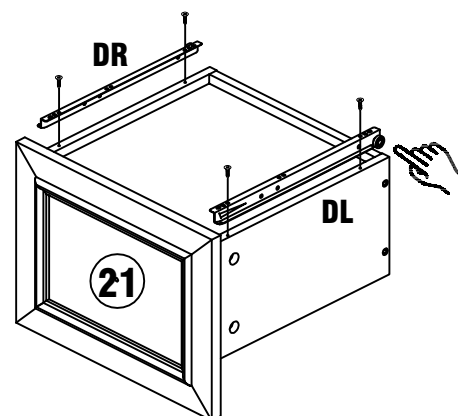


X3



STEP 19

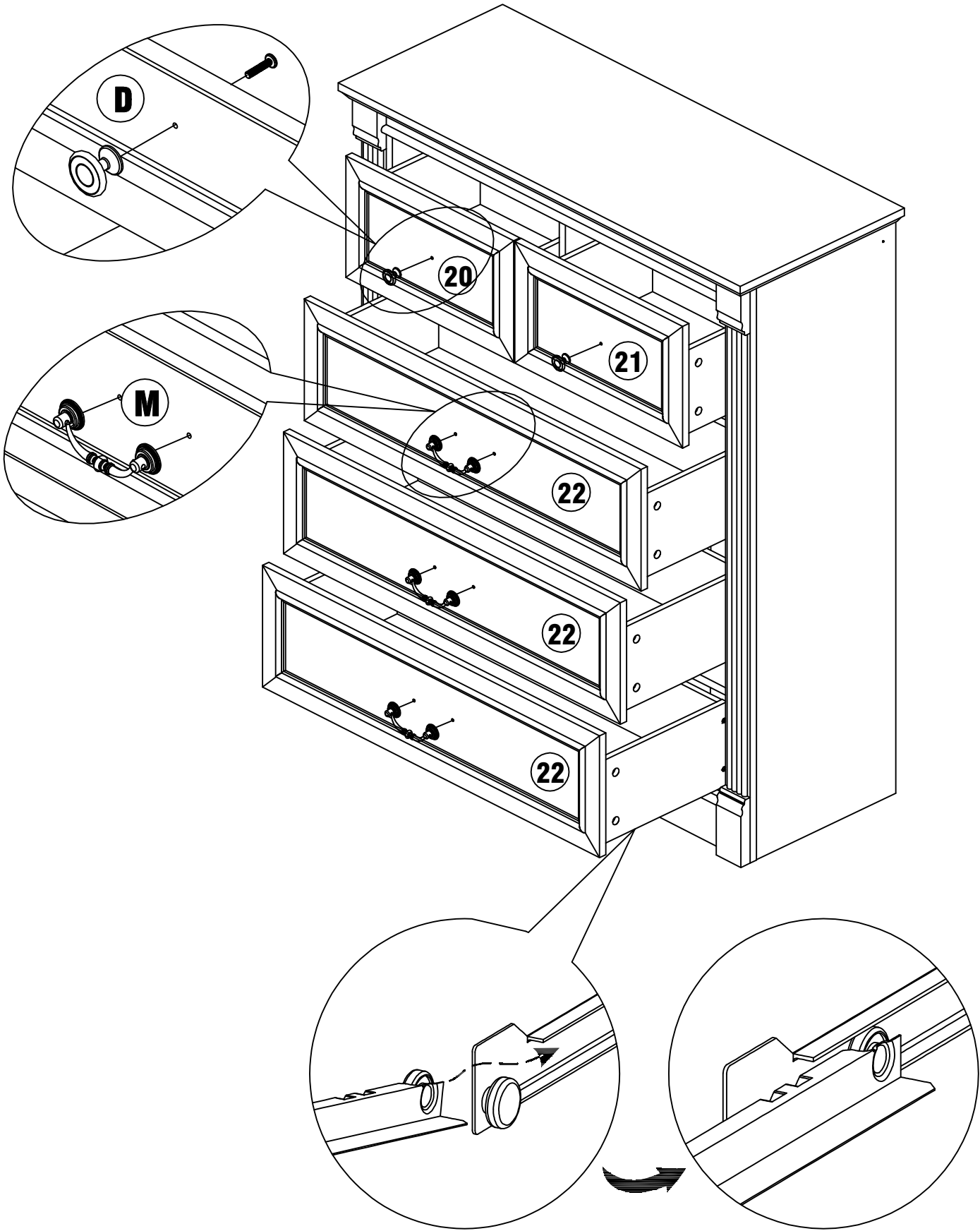


X3

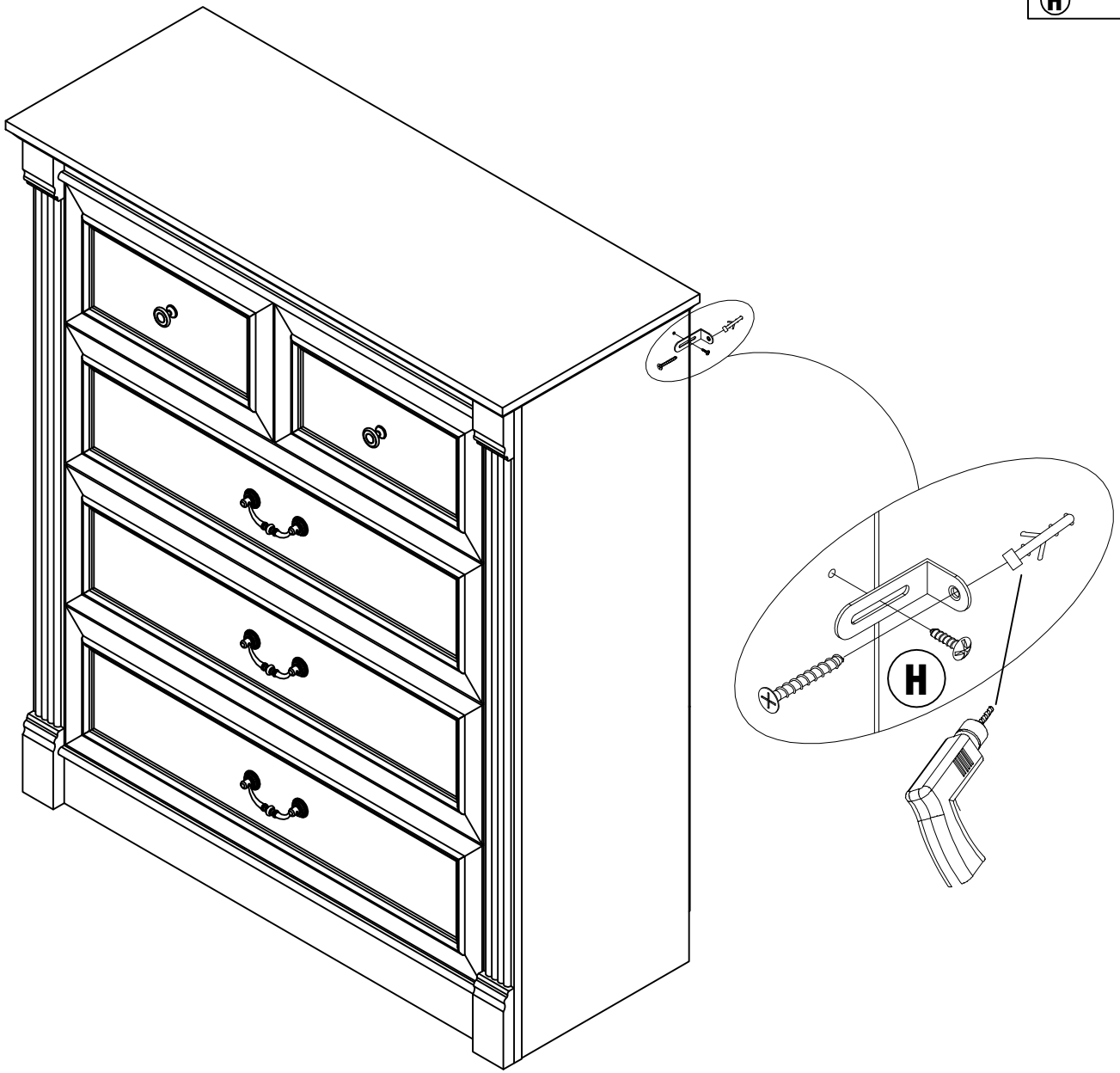
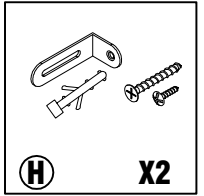


STEP 20

	
D	X2
	M
	X3



STEP 21



⚠ WARNING	
	<p>Children have died from furniture tipover. To reduce the risk of furniture tipover:</p> <ul style="list-style-type: none">• ALWAYS install anti-tip device provided.• NEVER put a TV on this product.• NEVER allow children to stand, climb or hang on any drawers, doors, or shelves.• NEVER open more than one drawer at a time.• Place heaviest items in the lowest drawers. <p><i>this is a permanent label. Do not remove!</i></p>