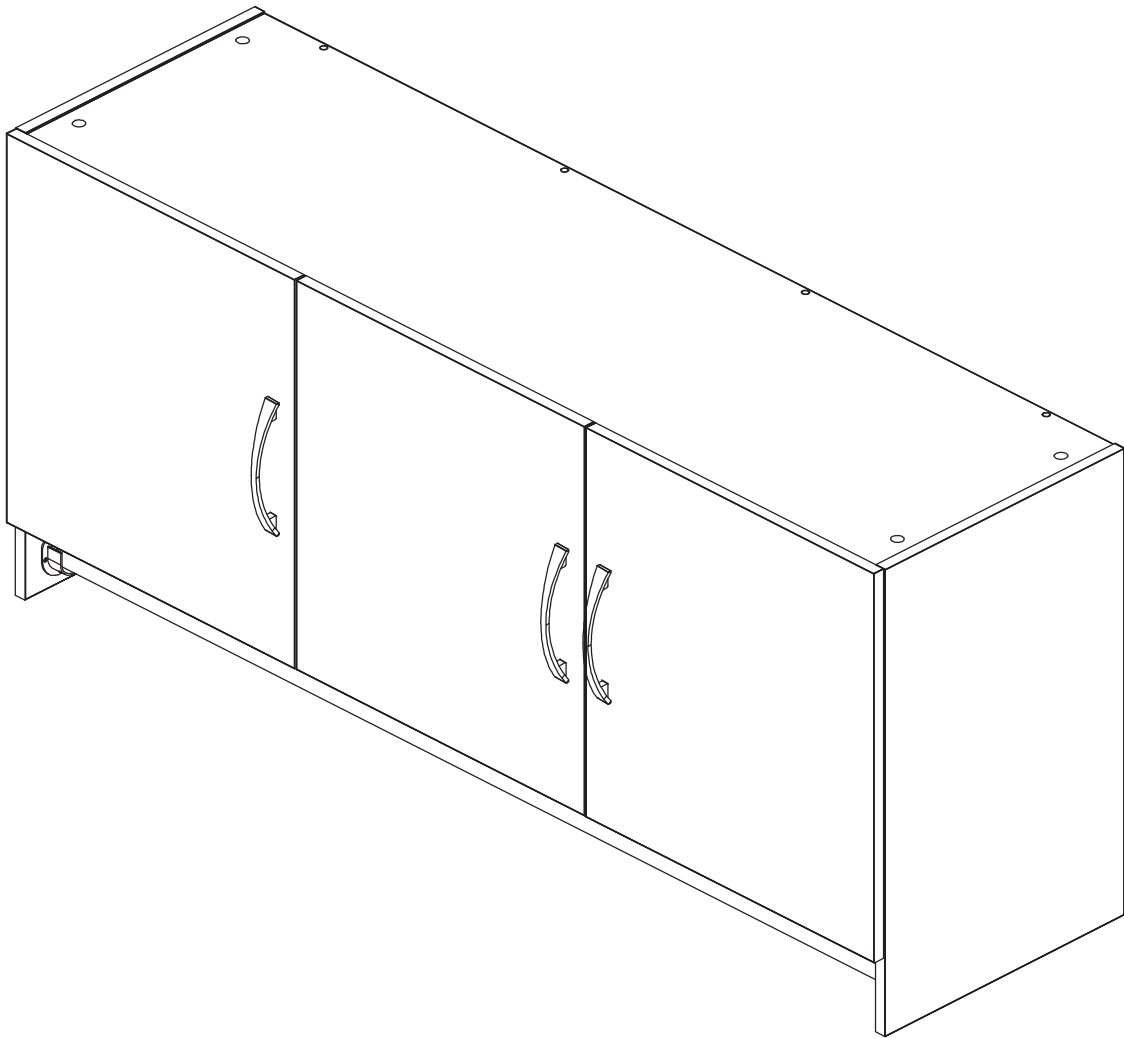


ASSEMBLY INSTRUCTION



INSTALLATION PREPARATION

Dear Customer,

Thank you for choosing us. Before you begin assembly, check that you have all the parts and hardware shown on this page.

If there is any item missing, please mark the item, indicating quantity required and send picture to us. We will arrange replacement at first time.

If feel question in assemble, Please feel free to ask us. Customer satisfaction is our prime.

Your order means a lot to us!

Thank you!

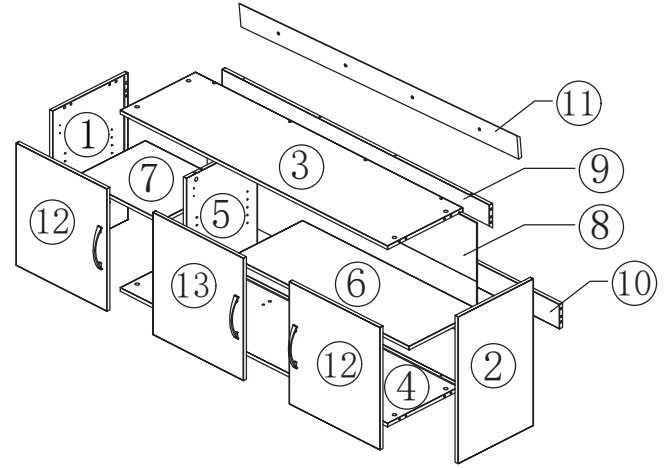
TOOLS NEEDED

Crosshead screwdriver

Flat-head screwdriver



PARTS LIST



HARDWARE LIST

A:Cam lock
Φ15*11mm



20 PCS

B:Cam bolt
Φ6*35mm



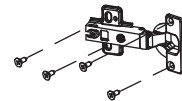
20 PCS

C:Wooden Dowel
Φ8*30mm



16 PCS

D:Full Cover Hinge



4 PCS

E:Handle



3 PCS

F:Pull Screw
M4*18



6 PCS

G:Screw
M5*40



8 PCS

H:Screw
M4*13



6 PCS

I:Shelf Support



8 PCS

J:Plug(low)
Φ15*3mm



20 PCS

K:Hanger rod holder



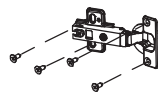
2 PCS

L:Expansion screw
M8*80



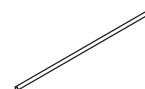
4 PCS

M:Half Cover Hinge



2 PCS

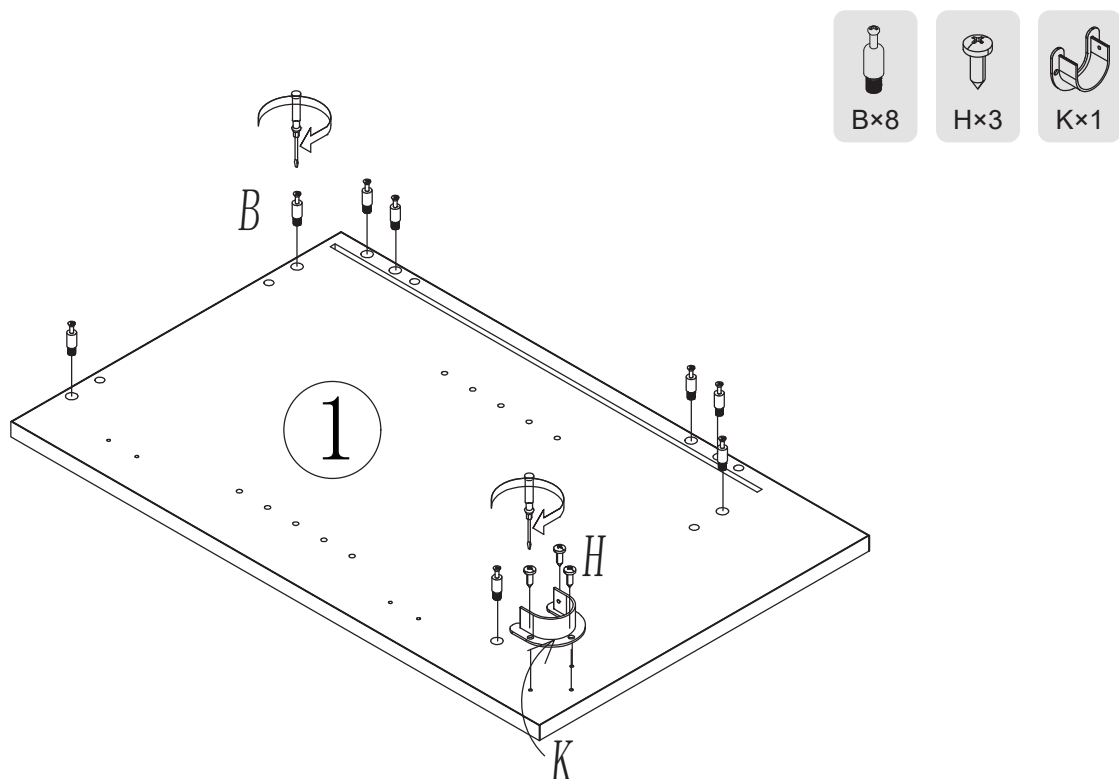
N:Hanger rod



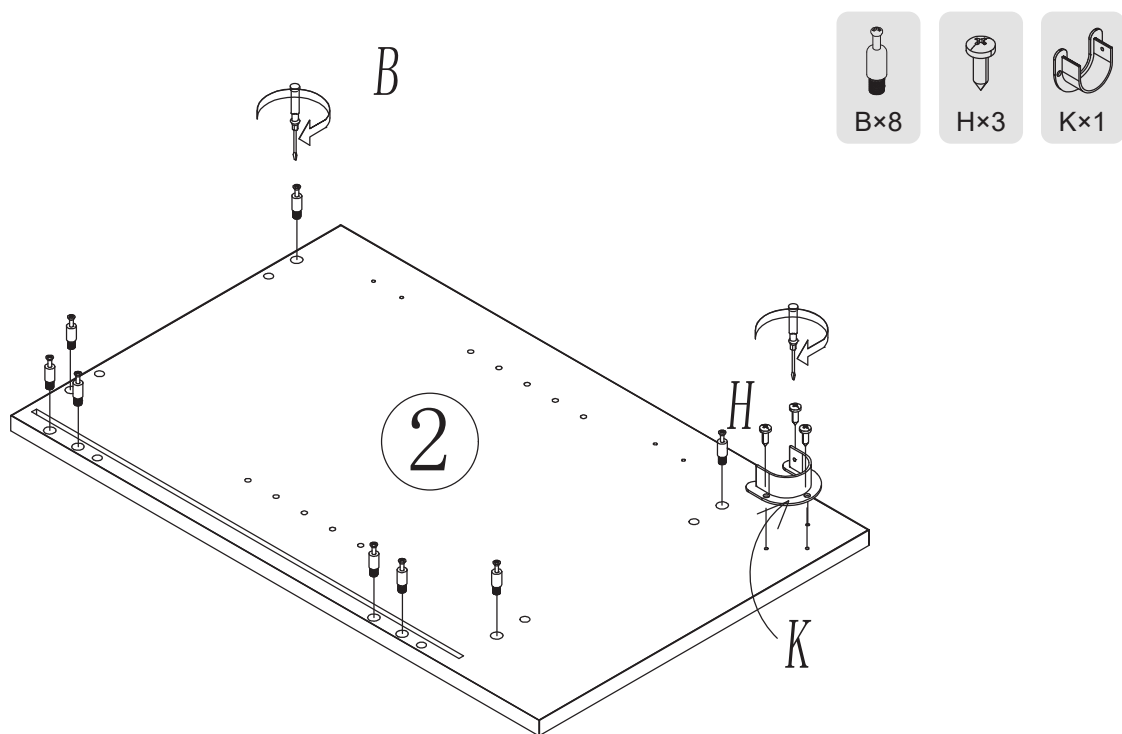
1 PCS

INSTALLATION PREPARATION

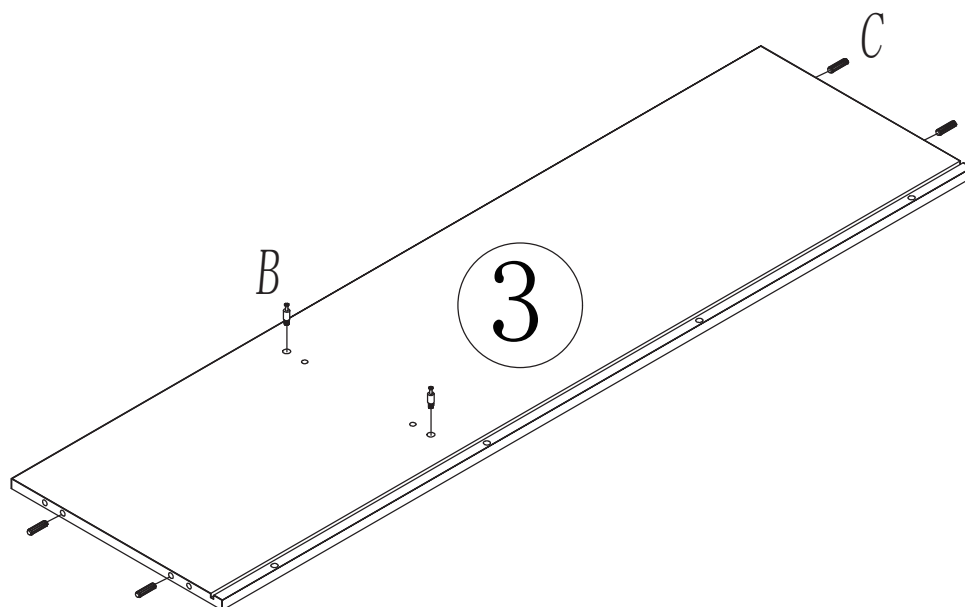
STEP 01



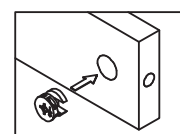
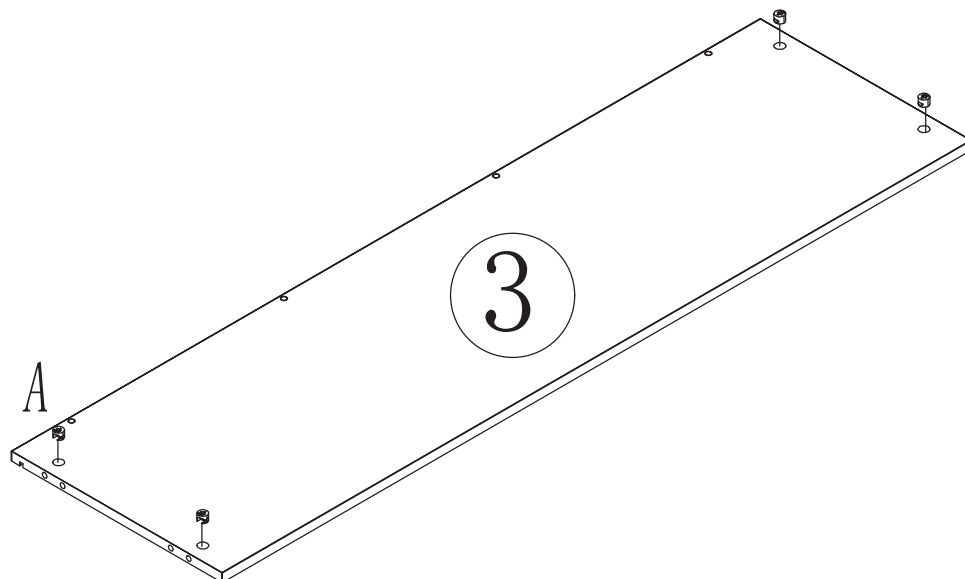
STEP 02



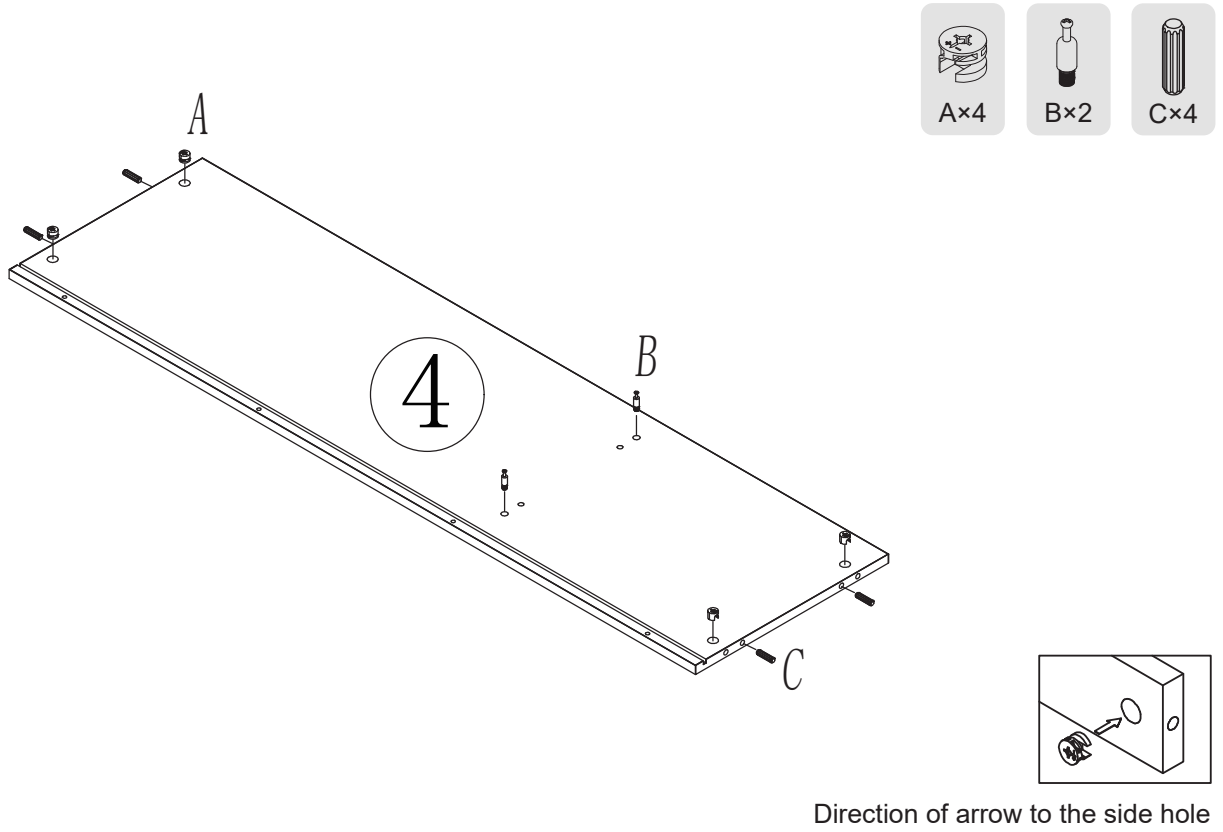
STEP 03



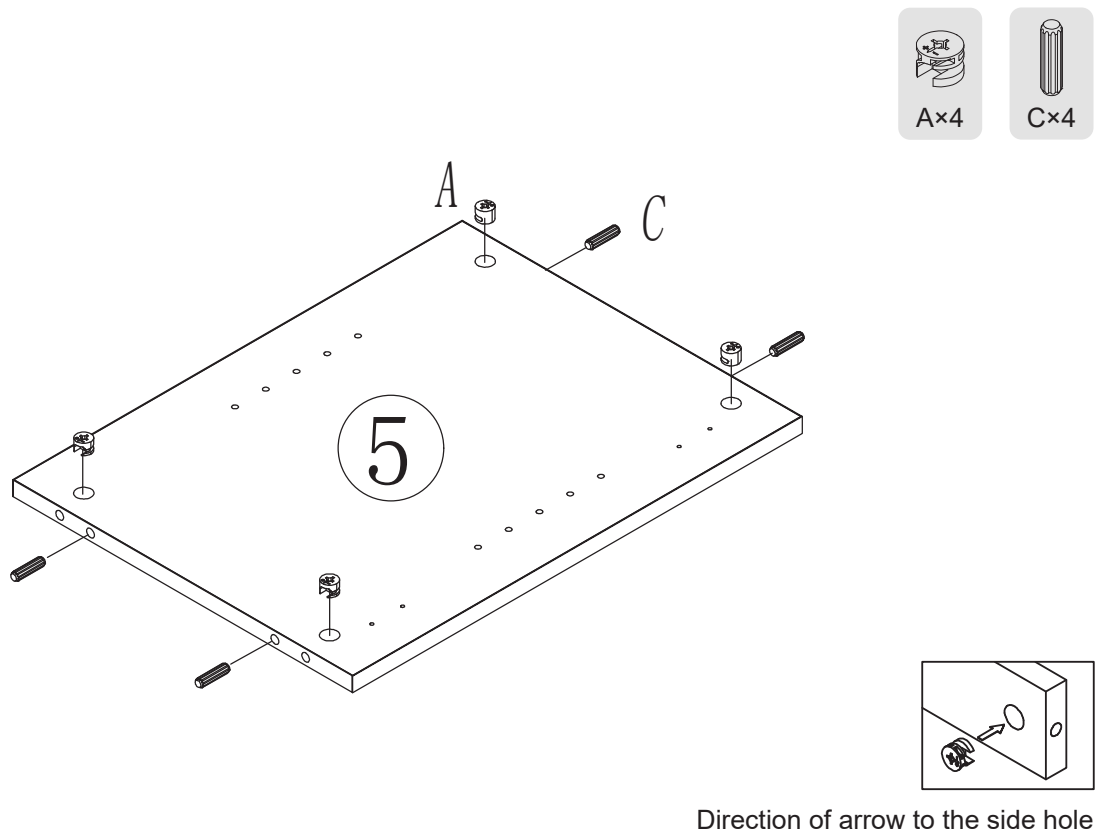
STEP 04



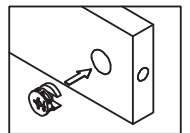
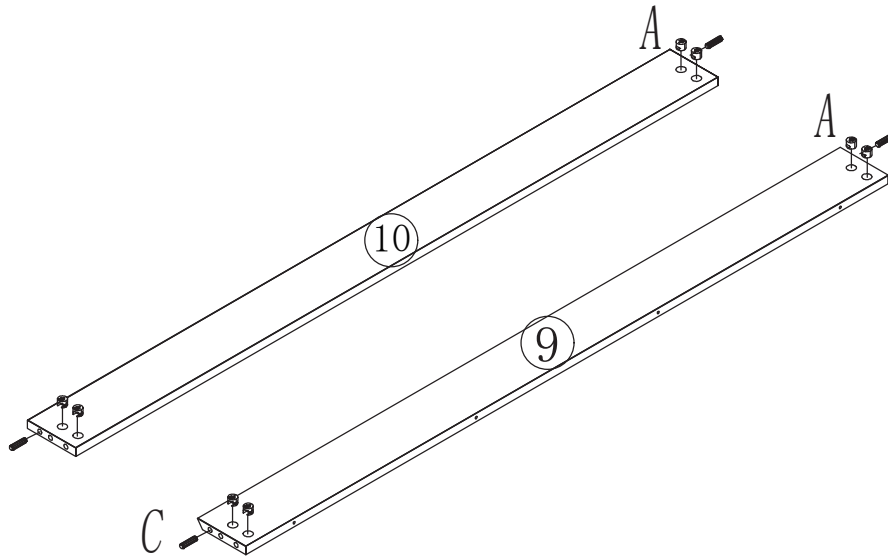
STEP 05



STEP 06

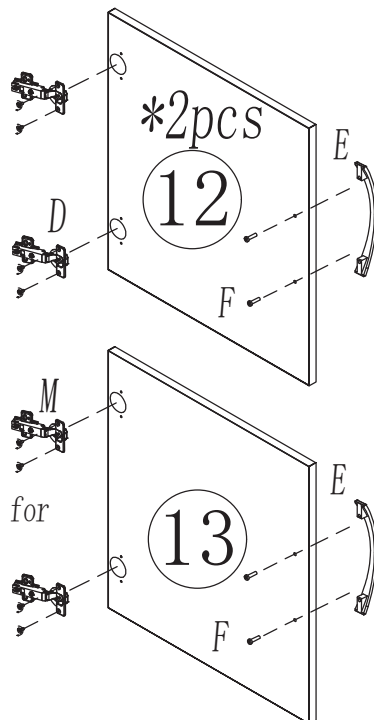
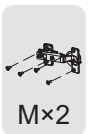
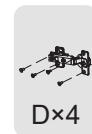


STEP 07



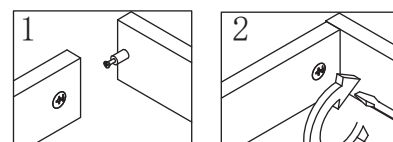
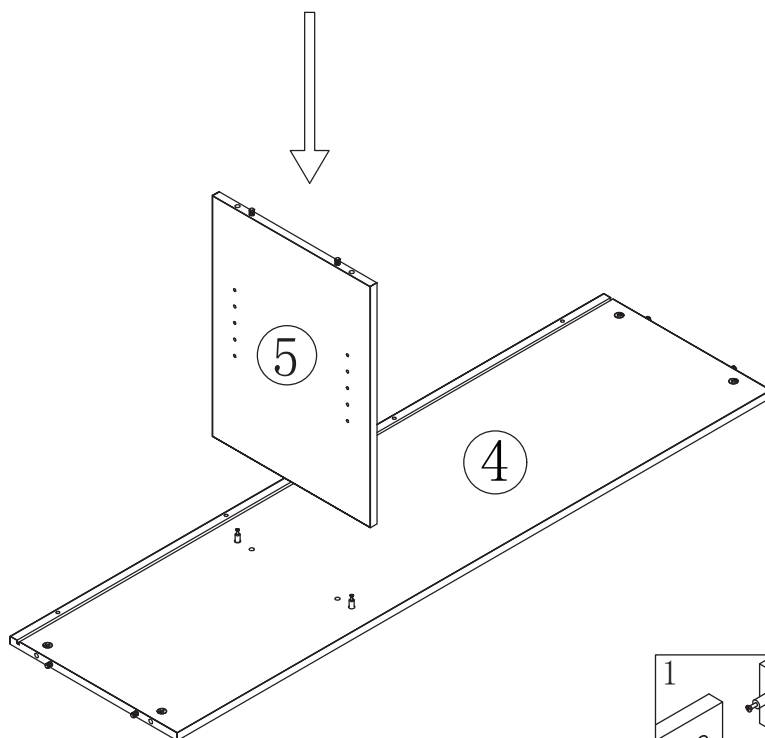
Direction of arrow to the side hole

STEP 08



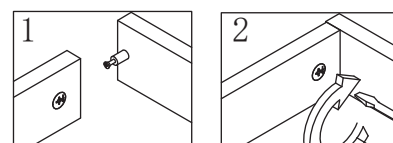
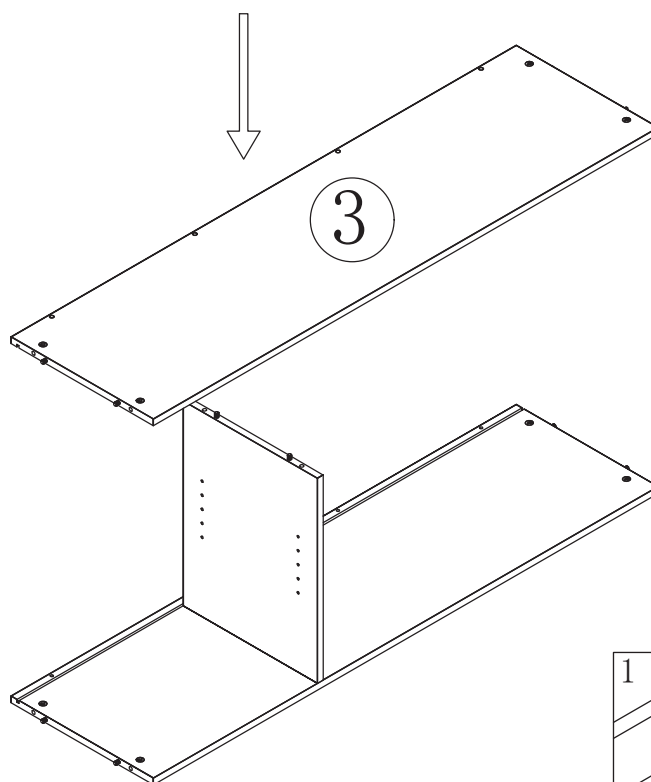
Note: The hinges used for door panel 13 are M

STEP 09



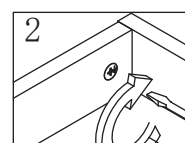
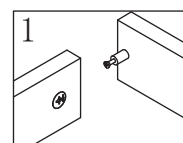
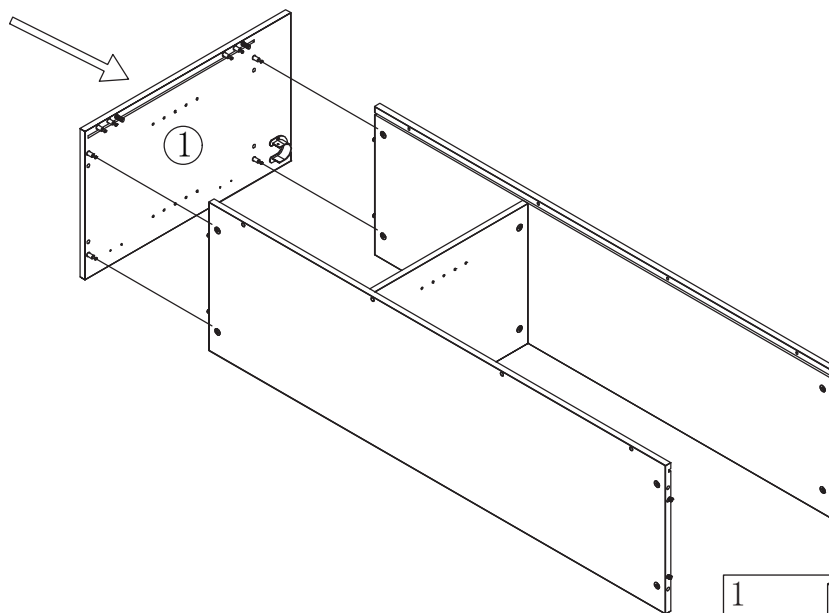
Remember to lock the Cam Lock

STEP 10



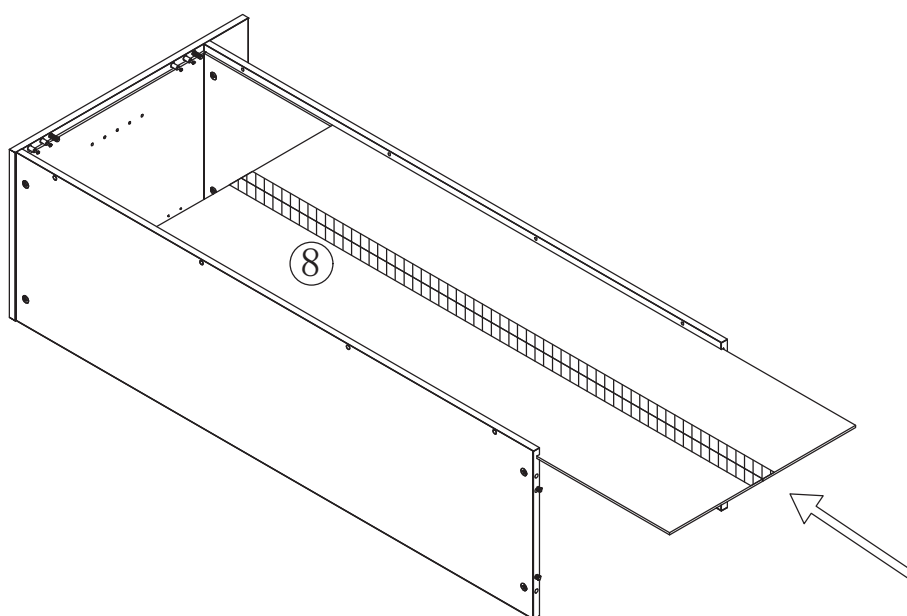
Remember to lock the Cam Lock

STEP 11

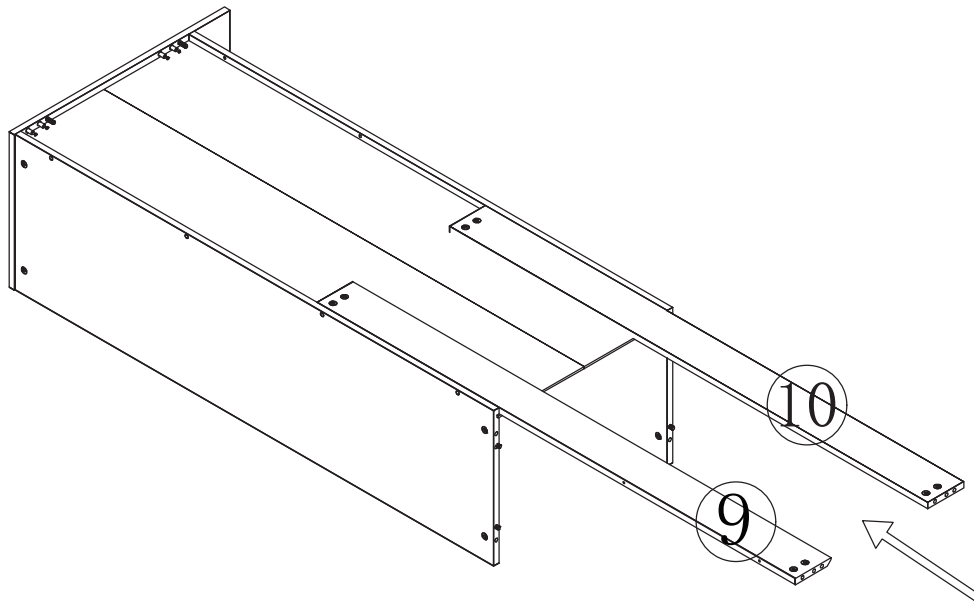


Remember to lock the Cam Lock

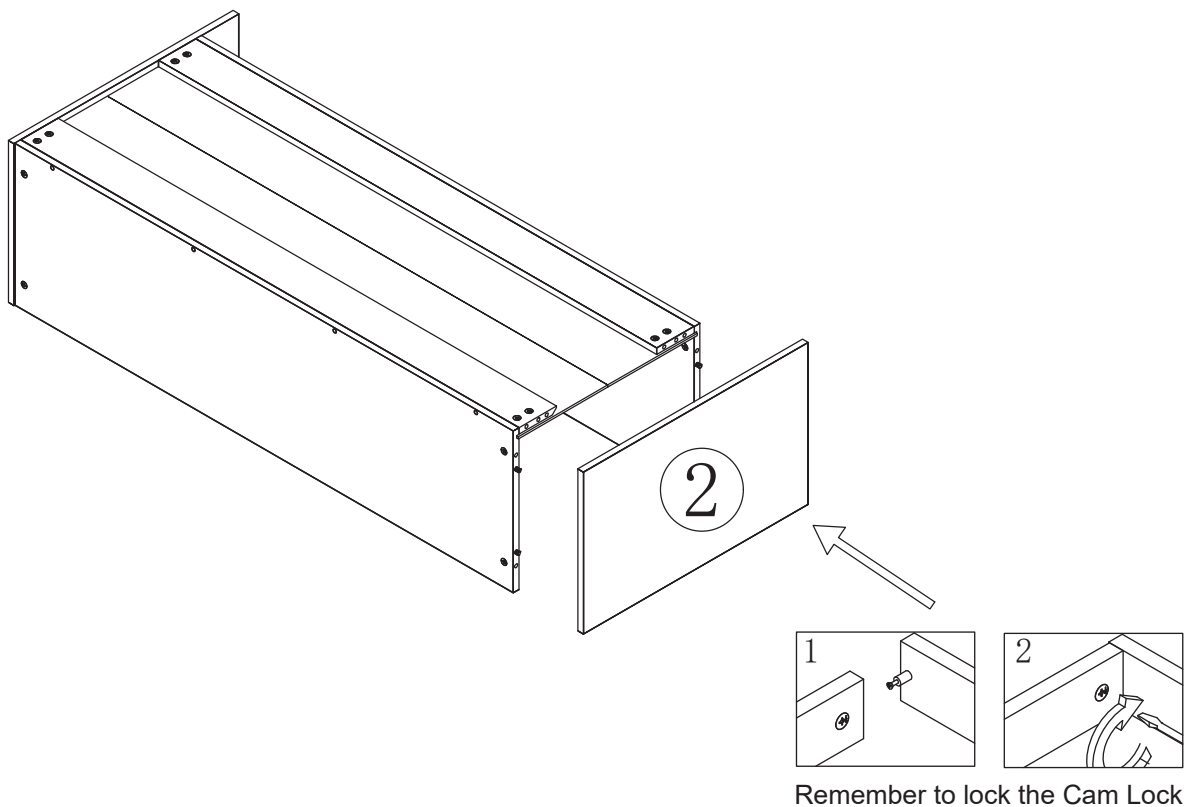
STEP 12



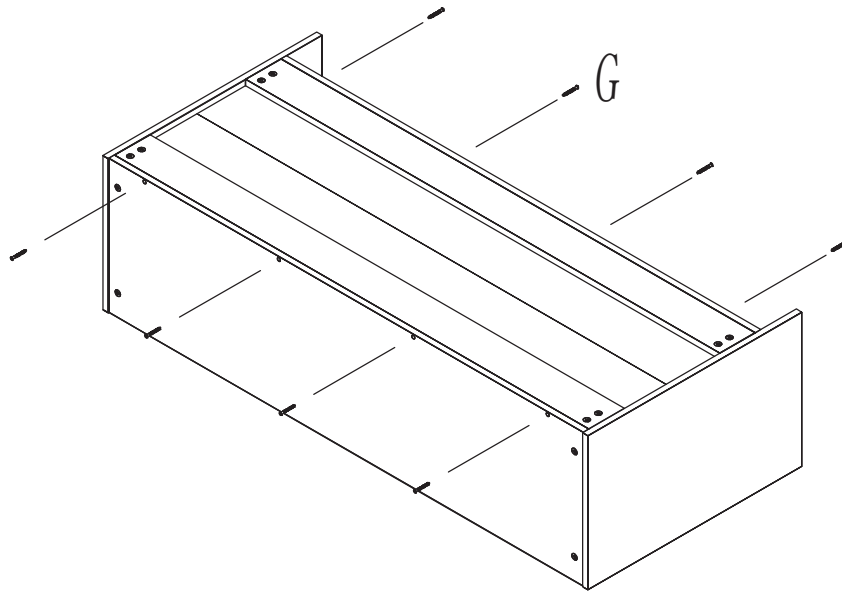
STEP 13



STEP 14

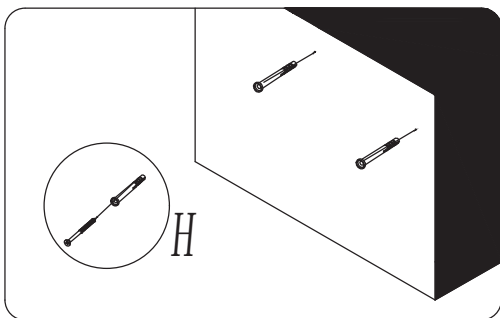
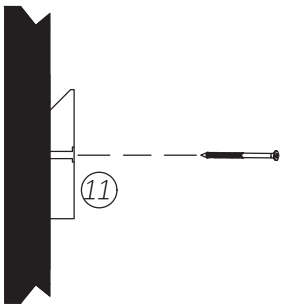


STEP 15

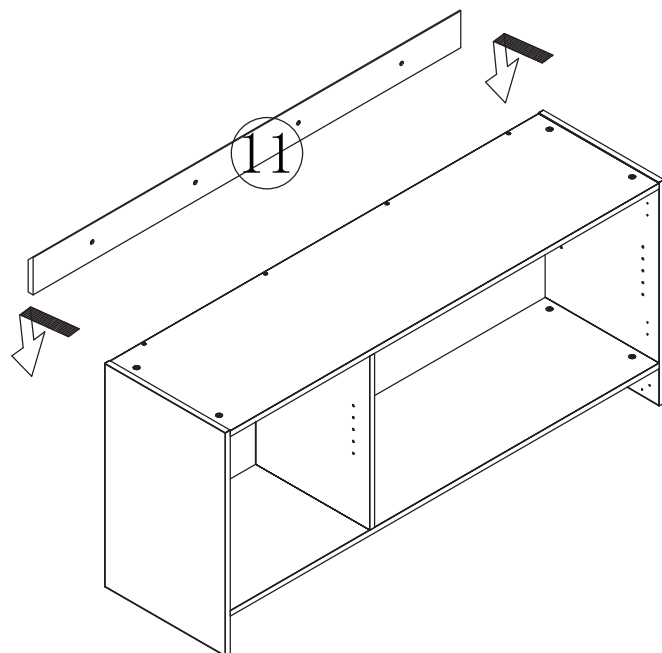



G×8

STEP 16

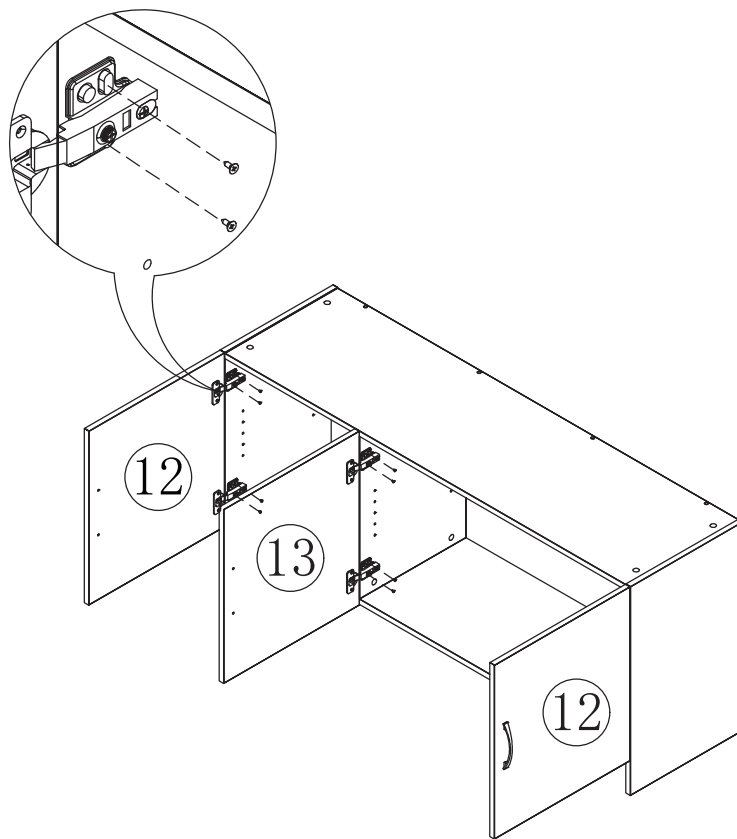


First of all, remove the screw of the expansion tube, and then drive the expansion tube in the position of the drilled hole in the wall.

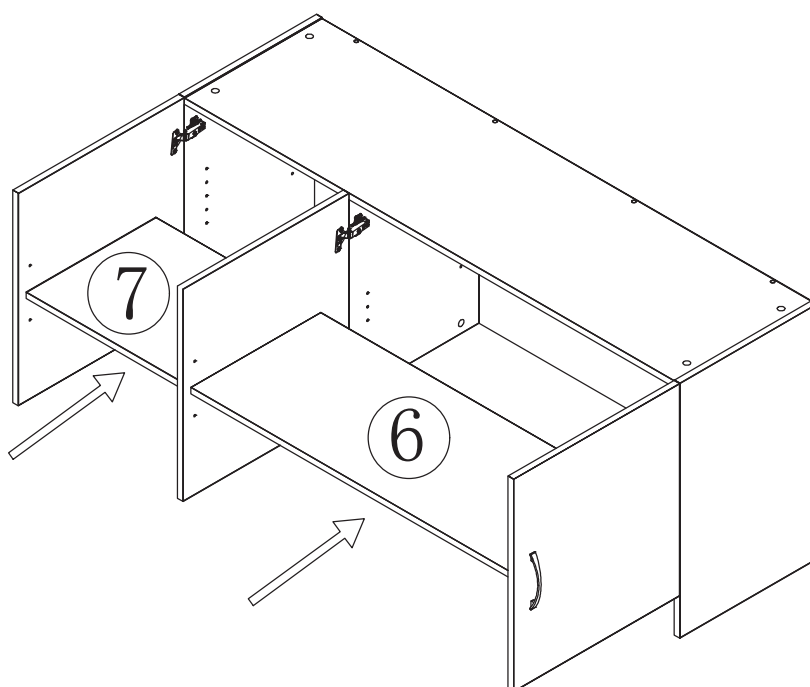



L×4

STEP 17

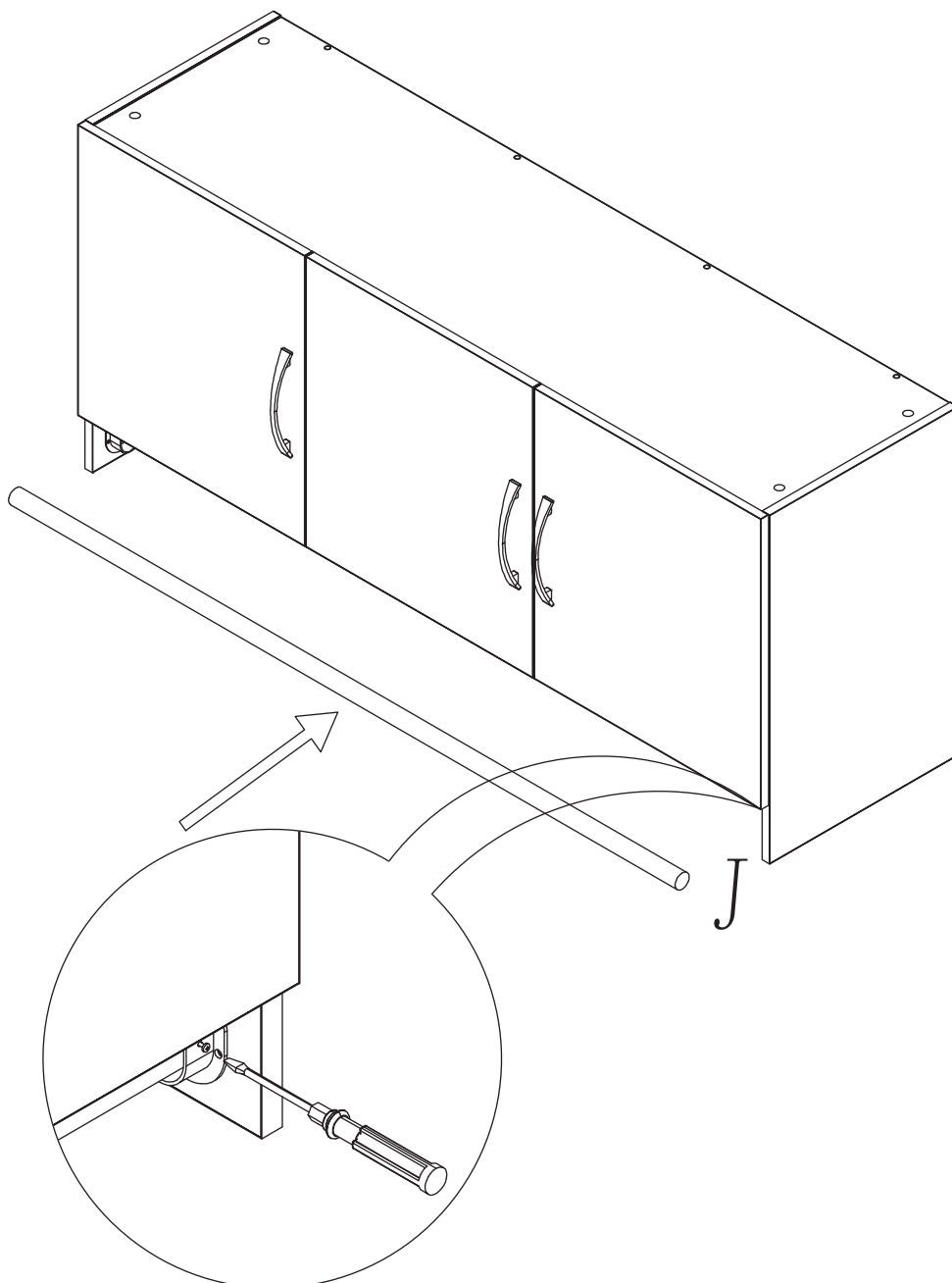


STEP 18



STEP 19

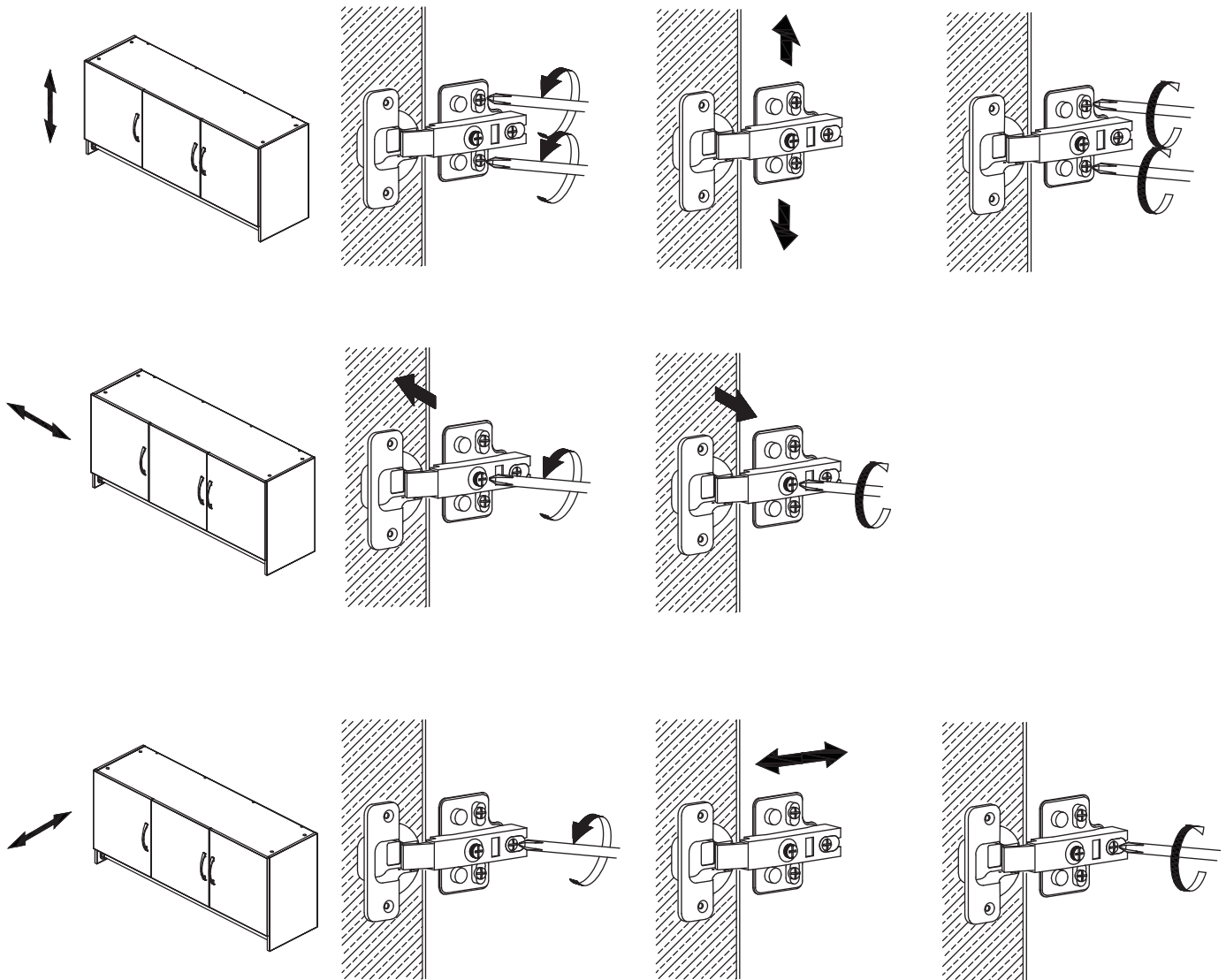
N×1



Tighten the mounting rod
screws on both sides

INSTALLATION PREPARATION

If there is misalignment after you install, adjust the screw to the best condition.



Thank you for your recent order.

We strive to provide customers with great services and satisfaction.

If any questions, please contact us.

Our customer support team is ready to help!