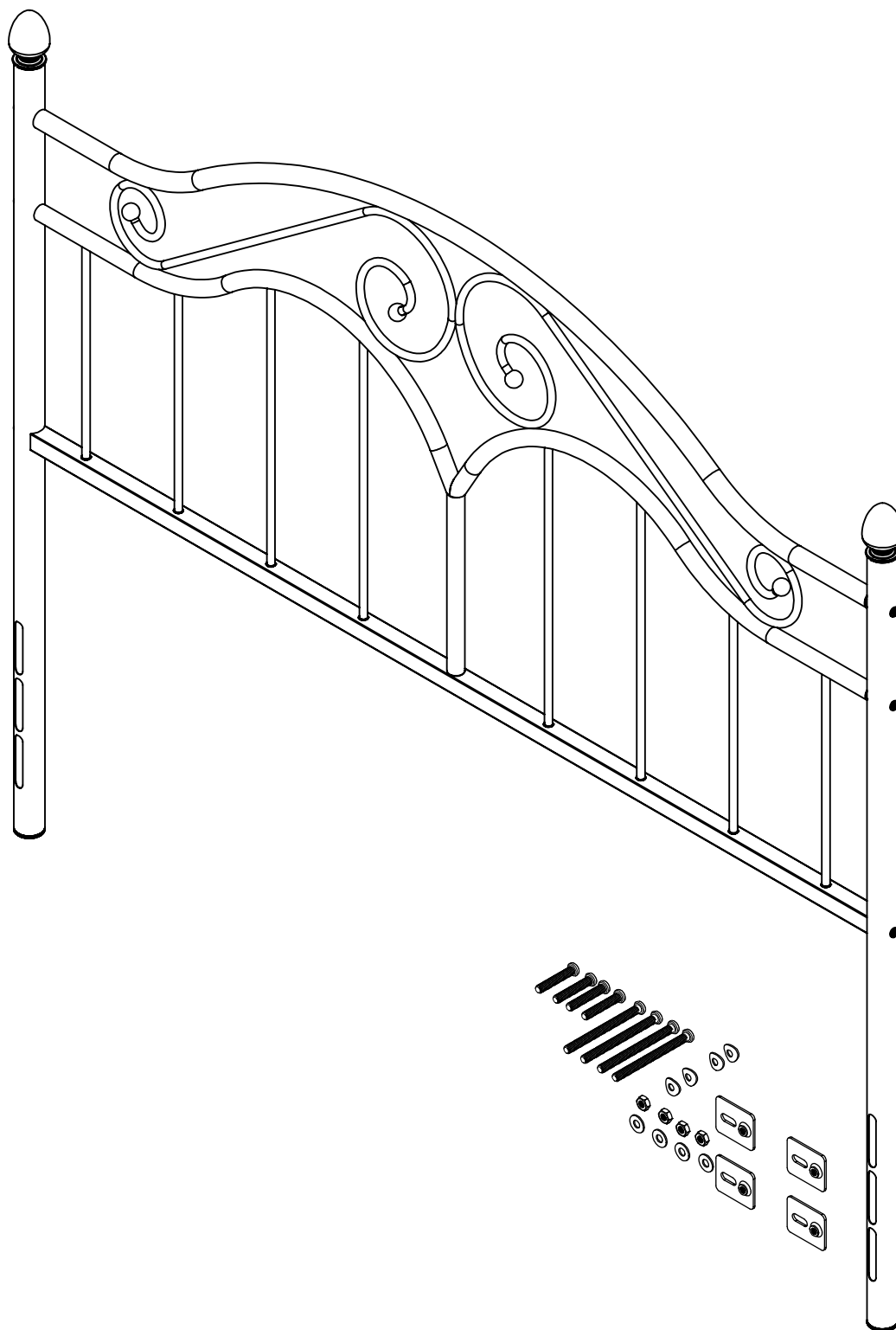
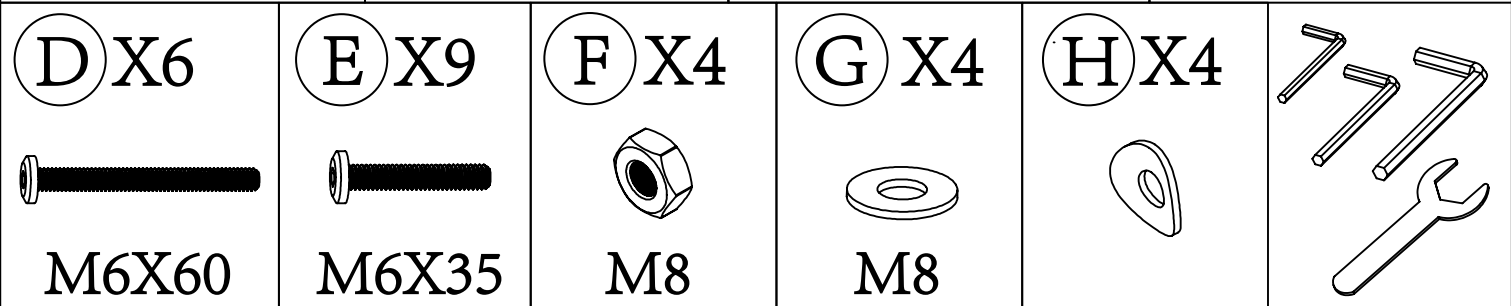
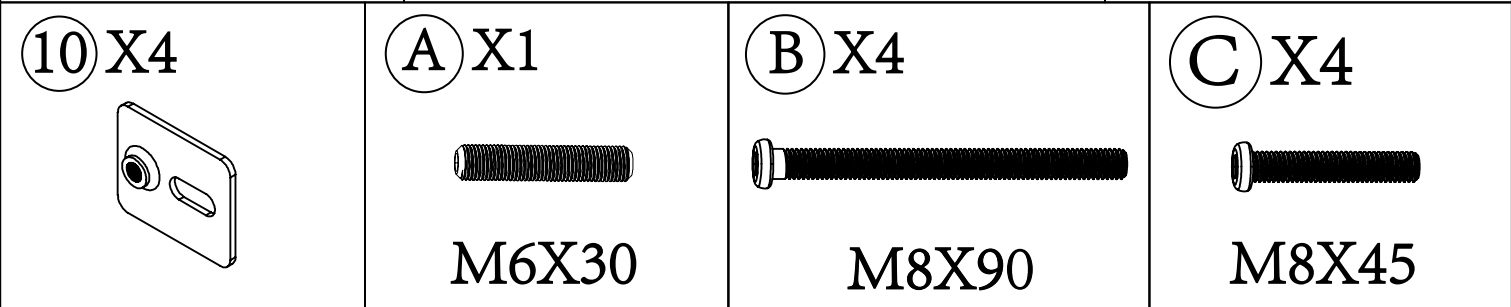
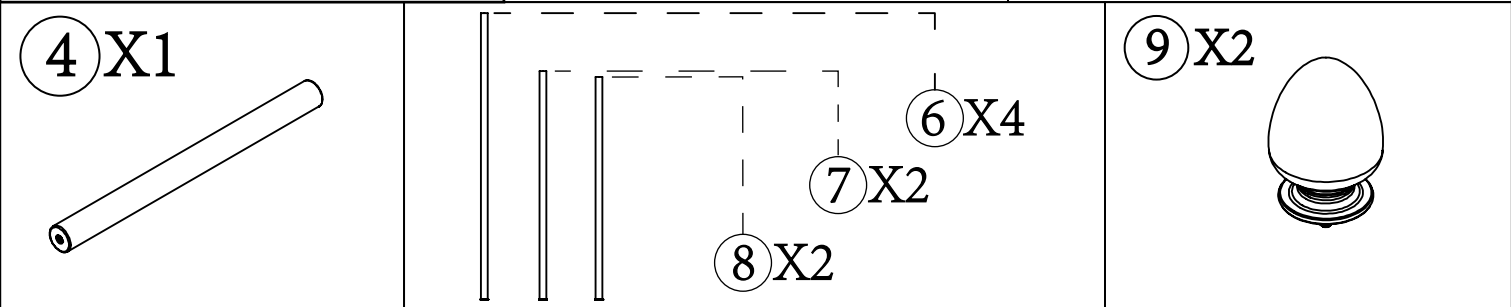
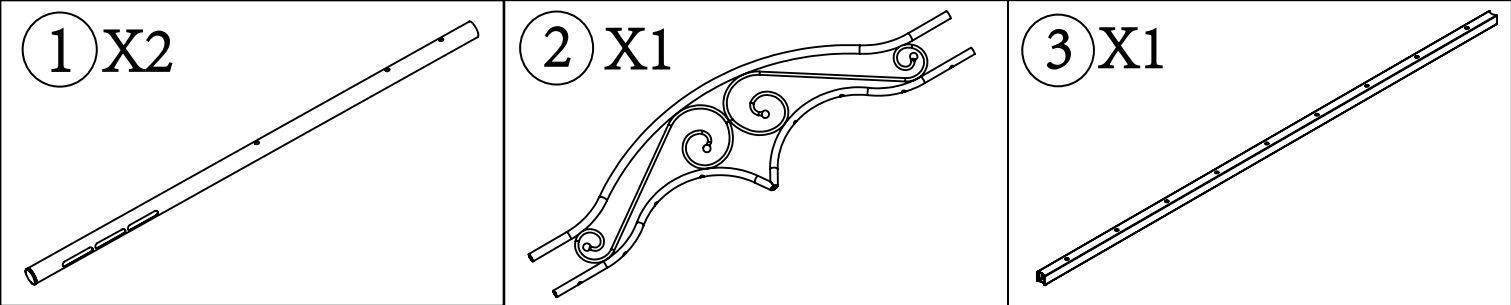


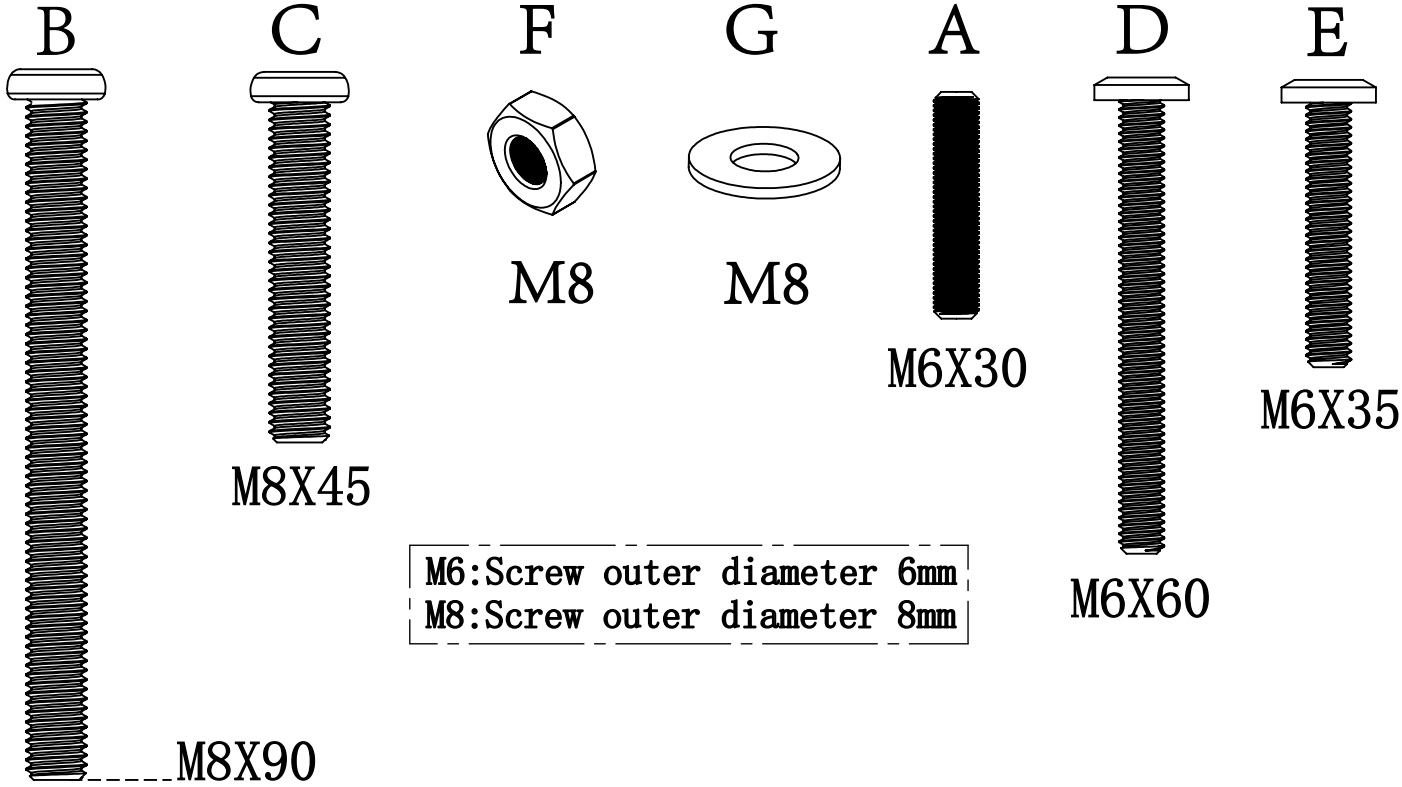
Queen

Adjustable Headboard Assembly Instruction



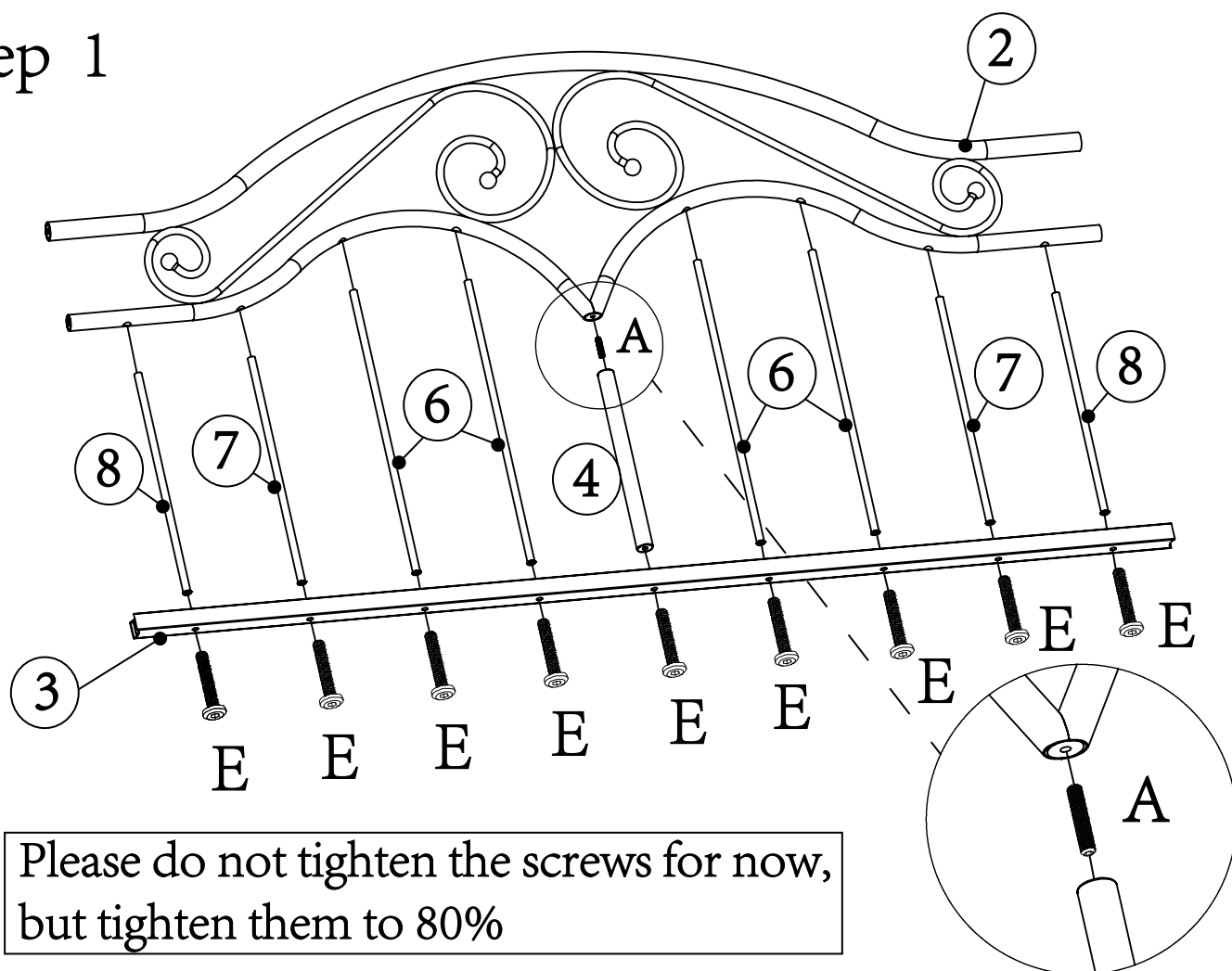


Difference screws display(1:1)

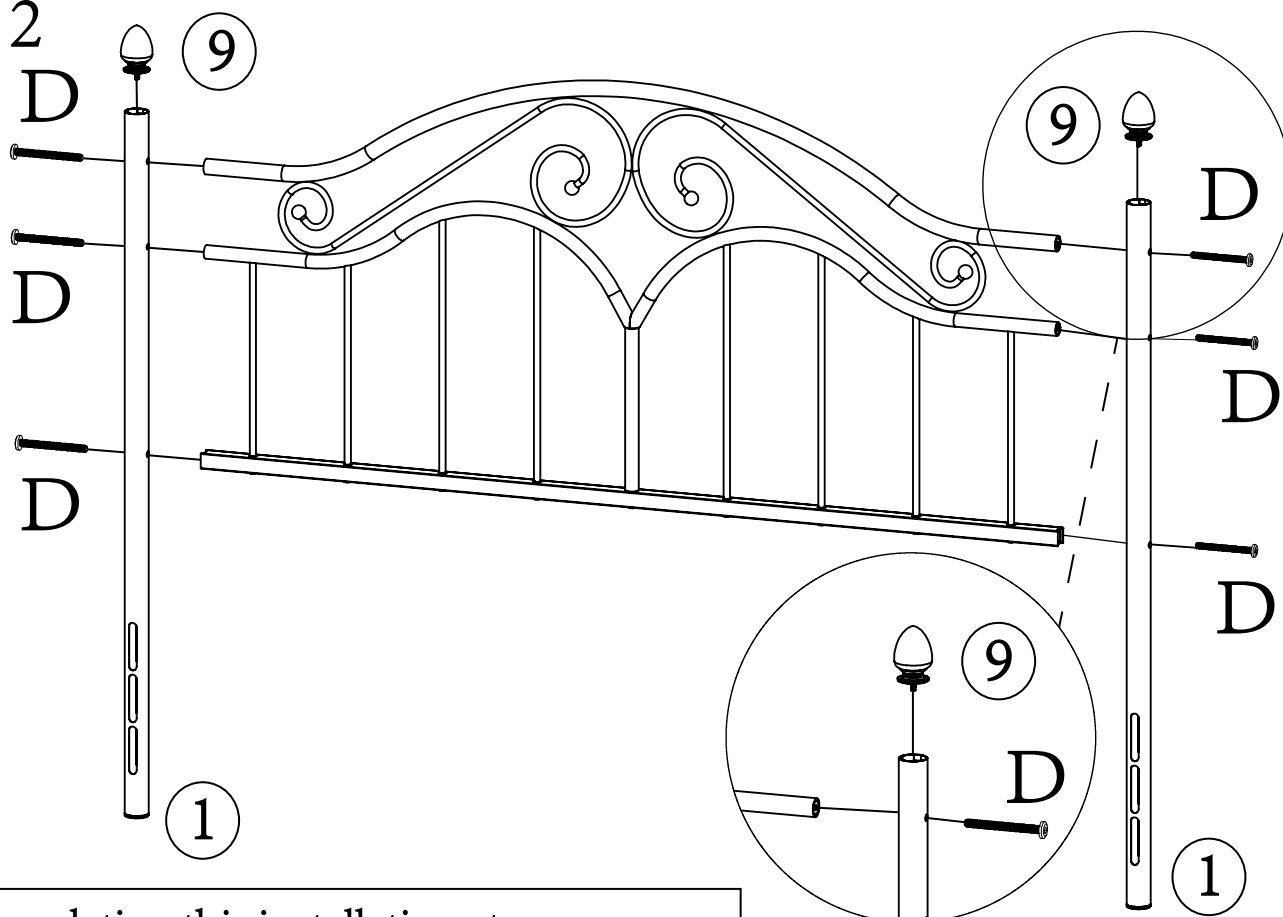


M6:Screw outer diameter 6mm
M8:Screw outer diameter 8mm

Step 1



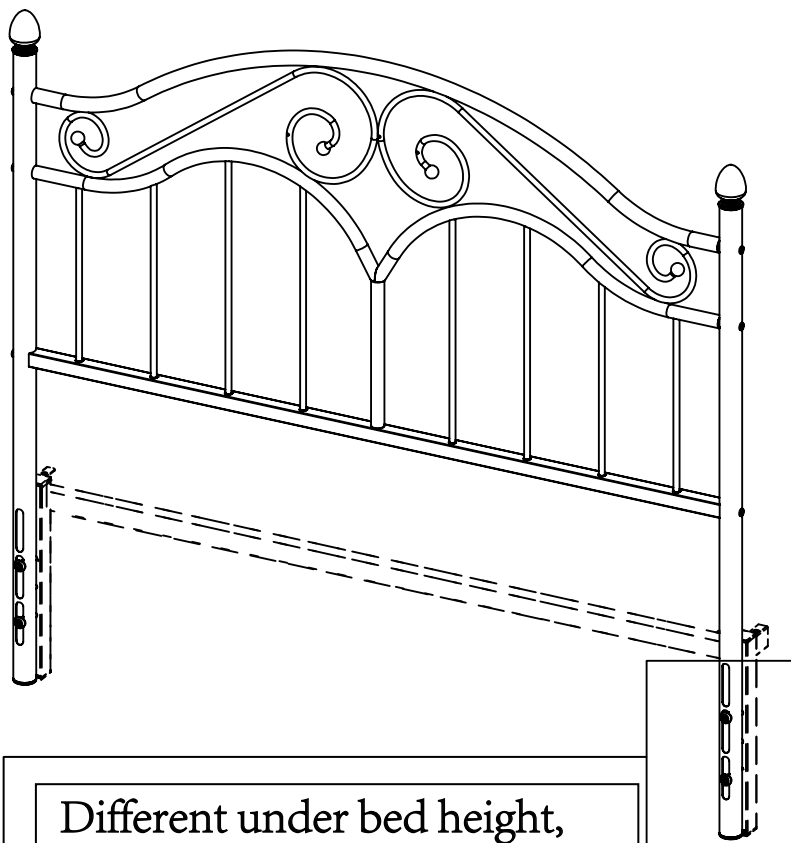
Step 2



After completing this installation step,
please tighten the screws from the previous step

Step 3

Select the suitable assembly scheme based on the requirement.



★ :When assembling Part 10, please pay attention to the direction. The direction to the left or right is adjustable.

Different under bed height, use different assembled height.

