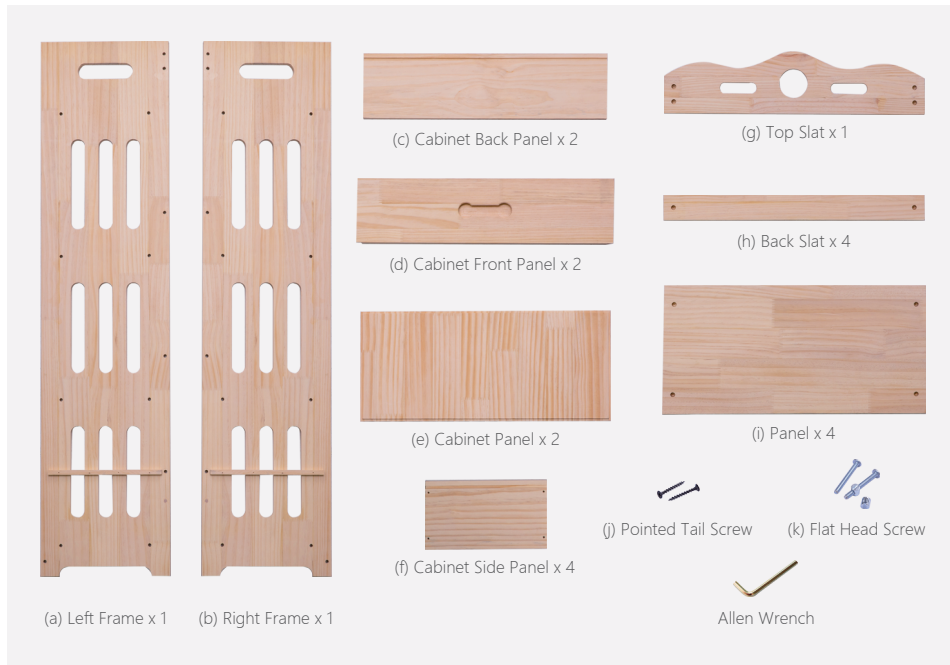


USER GUIDE

BOOKSHELF

Natural / Stylish / Unique

HARDWARE



⚠ ATTENTION

- ① Please always read and follow the assembly, maintenance and operating instruction.
- ② Do not discard any of the packaging until you have checked that you have all the parts and pack of fittings.
- ③ Keep children away during assembly. This item contains small parts which can be swallowed by children.
- ④ Wipe frames with water gently, do not use bleach, acid, or other solvents.
- ⑤ Check all hardwares before assembly. Incorrect parts used may lead to damage.



Scan the QR code to view the assembly video.



FINISHED PRODUCT

ASSEMBLY INSTRUCTIONS



- ① Position Cabinet Front Panels (d) and Cabinet Side Panels (f) as picture shown. Secure with Pointed Tail Screws (j).



- ② Insert Cabinet Panel (e) to slot.



- ③ Secure Cabinet Back Panel (c) with Pointed Tail Screws (j).



- ④ Position and secure Back Slat (h) on Frame (b) with Flat Head Screws (k).

© 2020-2021 by Pundarika LLC - MoNiBloom.com



- ⑤ Secure Panels (i) with Flat Head Screws (k).



- ⑥ Position and secure Frame (a) with Flat Head Screws (k).



- ⑦ Position and secure Back Slats (h) with Flat Head Screws (k).



- ⑧ Position and secure Top Slat (g) with Flat Head Screws (k).



- ⑨ Insert cabinets and done.