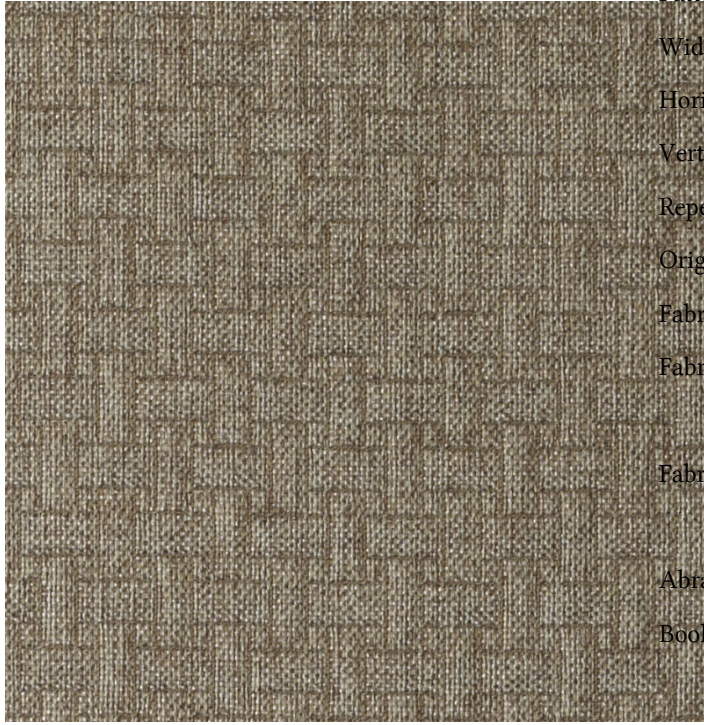




Fabric Detail for: Dw15929 | 178-driftwood



Pattern:	Dw15929 178-driftwood
Width:	57"
Horizontal Repeat:	1.000"
Vertical Repeat:	1.250"
Repeat Direction:	Up The Roll
Origin:	China
Fabric Grade:	02
Fabric Contents:	80% Polyester 20% Polypropylene
Fabric Performance:	CA 117 2013 UFAC - Class 1
Abrasion:	50,000 Double Rubs
Book Name:	BARLEY-CORK-TRUFFLE