

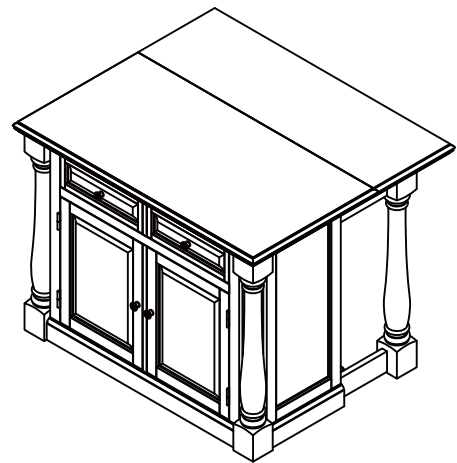
Kitchen Island

IMPORTANT

Carefully remove all the parts from the carton and place them individually on a soft cloth to prevent scratches or other damage.

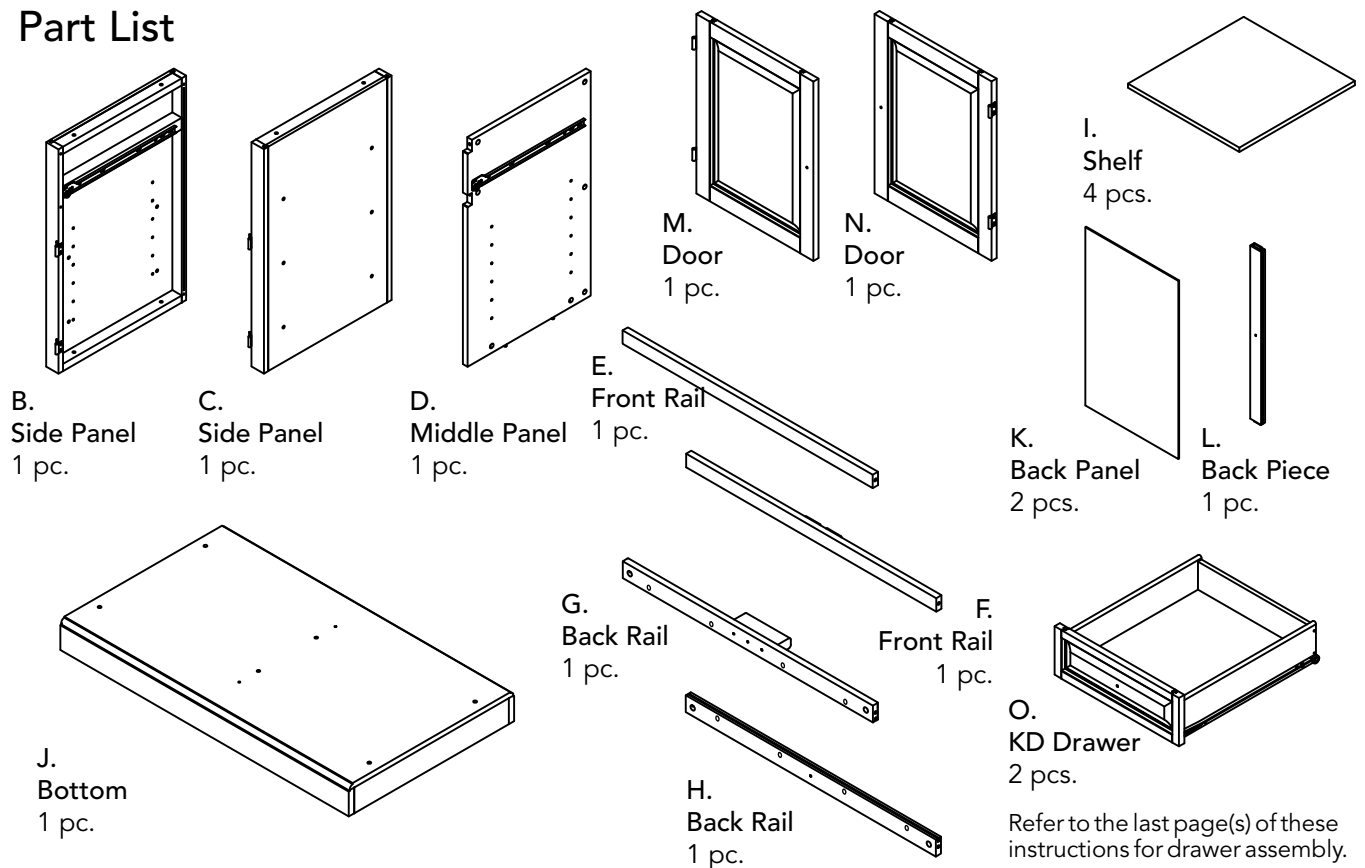
Carefully and strictly follow these assembly instructions to ensure a completed product as designed.

Do not use power tools above 8 volts to assemble.

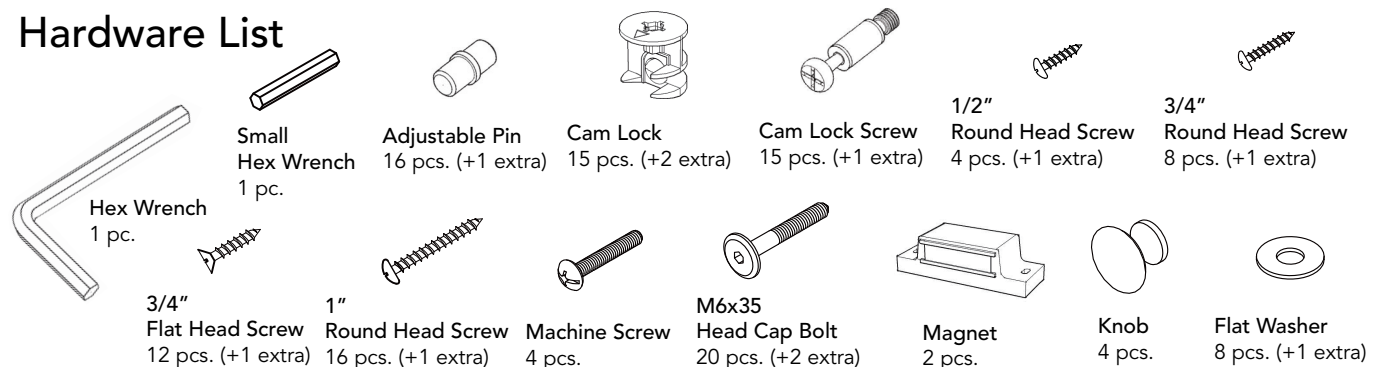


Patent 8,584,600 B2

Part List



Hardware List



Tool(s) required for assembly: Phillips screwdriver, Level

Assembly Instructions 2/8

IMPORTANT

- Use a soft cloth between these parts and the floor.
- Do not use power tools above 8 volts to assemble.
- The unit must be level to work properly. Use the included adjustable levelers to level.
- Keep Hex Wrench in a safe place as the bolts may need to be tightened up in the future.

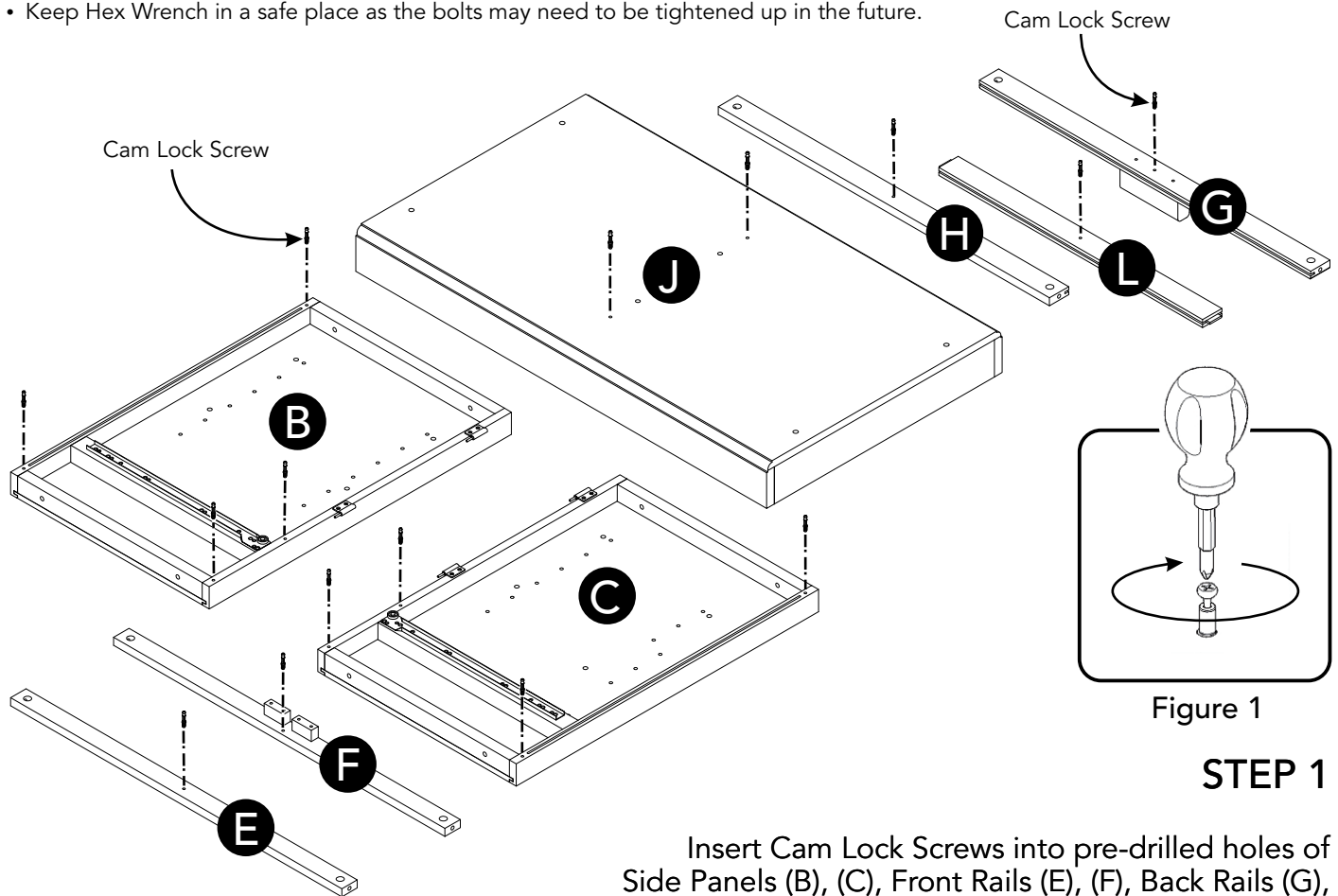


Figure 1

STEP 1

Insert Cam Lock Screws into pre-drilled holes of Side Panels (B), (C), Front Rails (E), (F), Back Rails (G), (H) and Back Piece (L). (See Figure 1)

STEP 2

Attach Magnets to Front Rail (F) with 1/2" Round Head Screws. (See Figure 2)

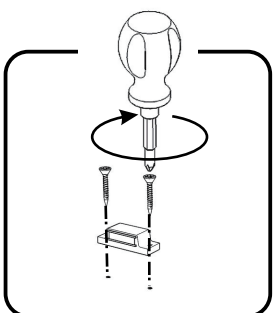
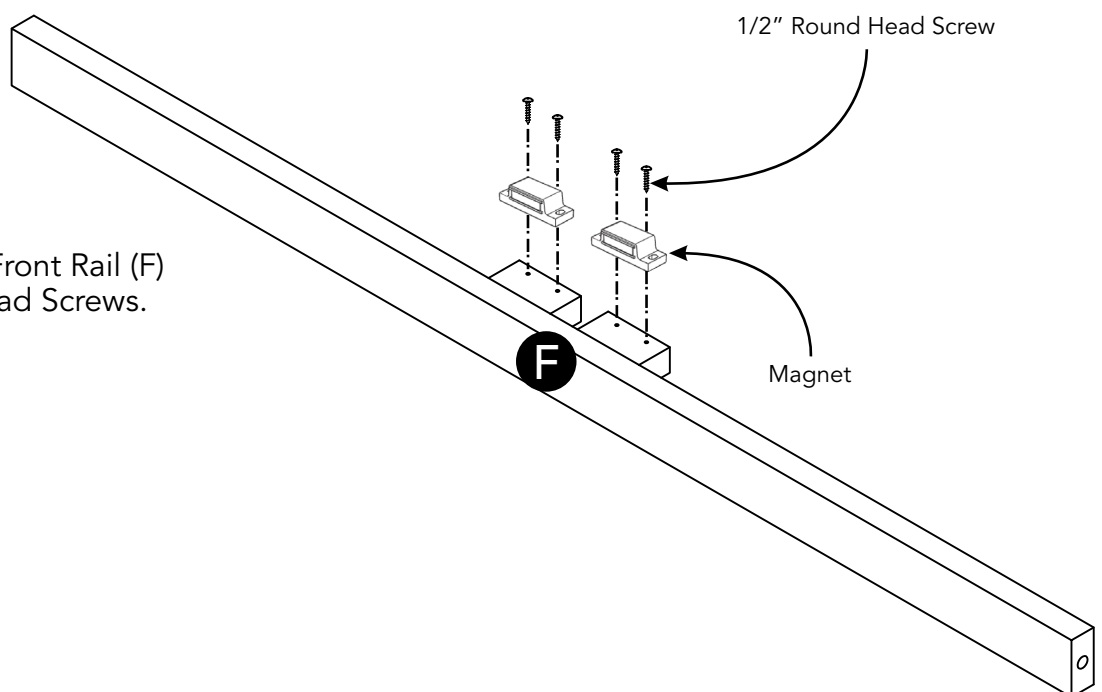


Figure 2



Assembly Instructions 3/8

STEP 3

Slide Back Panel (K) into the groove of Back Rail (G), (H) and Back Piece (L).

Attach Middle Panel (D) to Front Rails (E), (F), Back Rails (G), (H) and Back Piece (L) with Cam Locks. (See Figure 3)

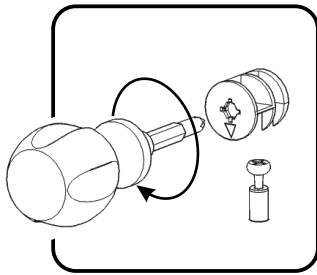
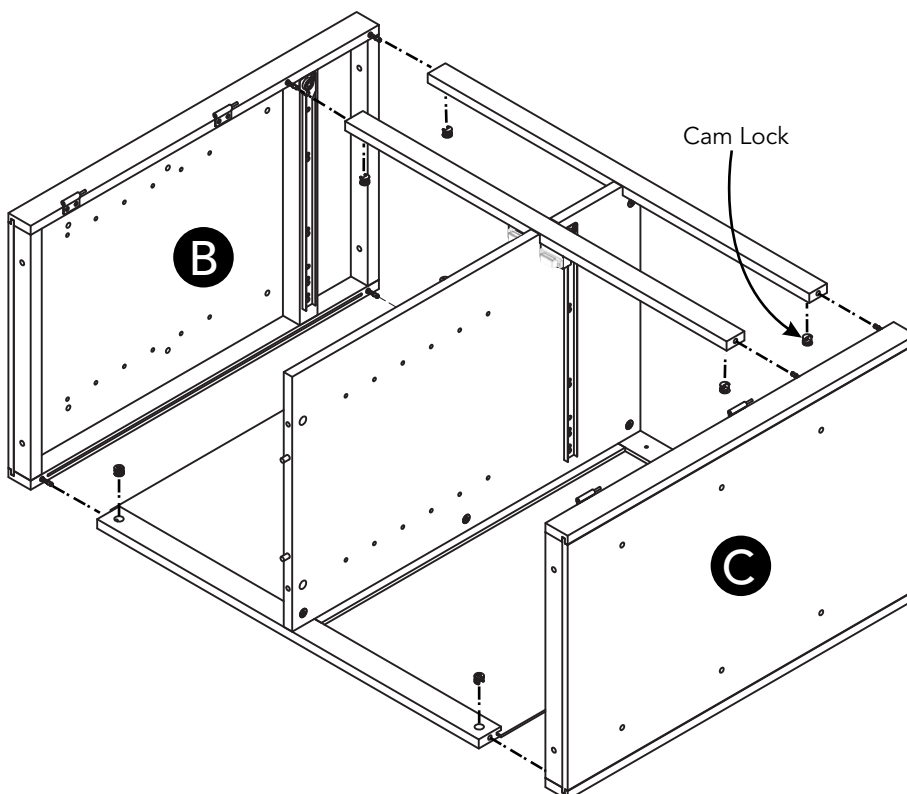
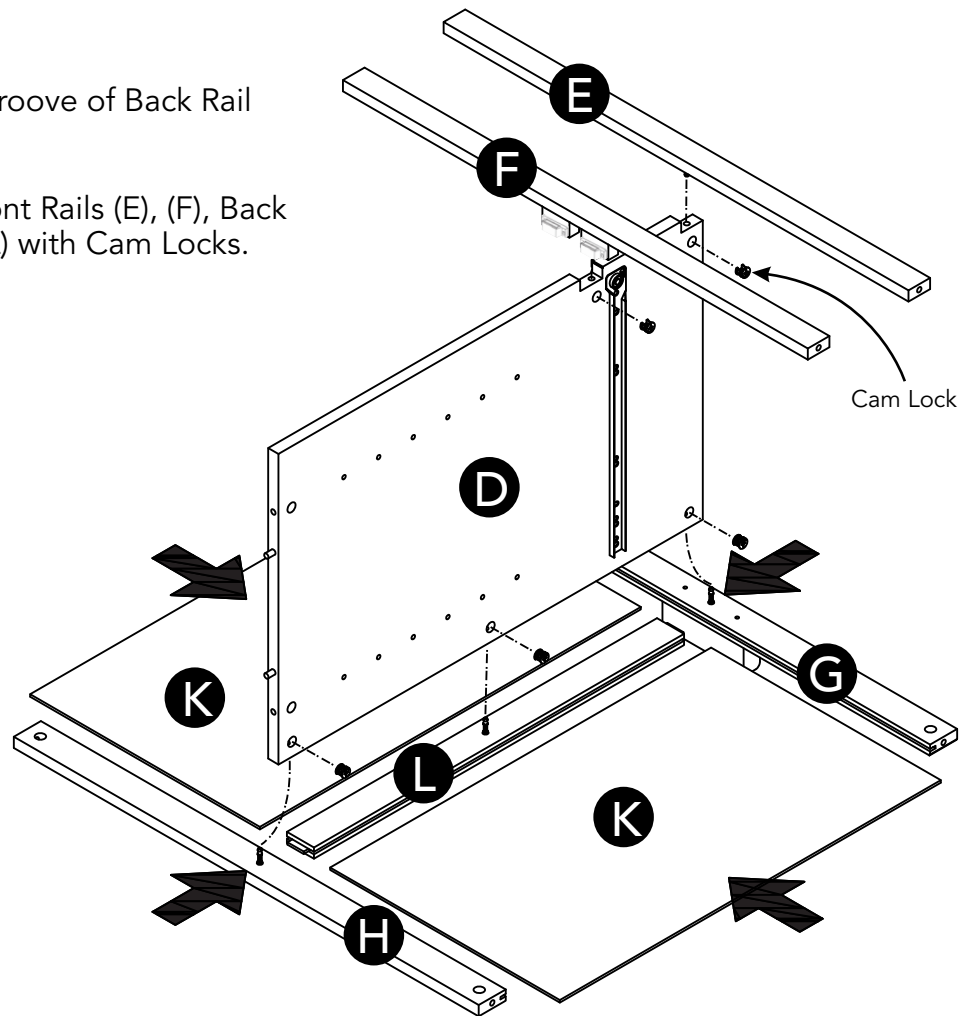


Figure 3



STEP 4

Attach Side Panels (B) and (C) to unit with Cam Locks.

Assembly Instructions 4/8

STEP 5

Attach Bottom (J) to unit with Cam Locks, Flat Washers and Head Cap Bolts. (See Figure 4)

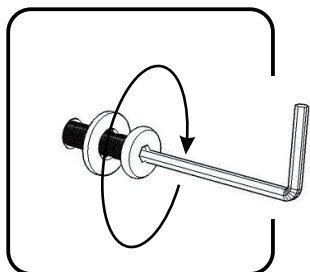
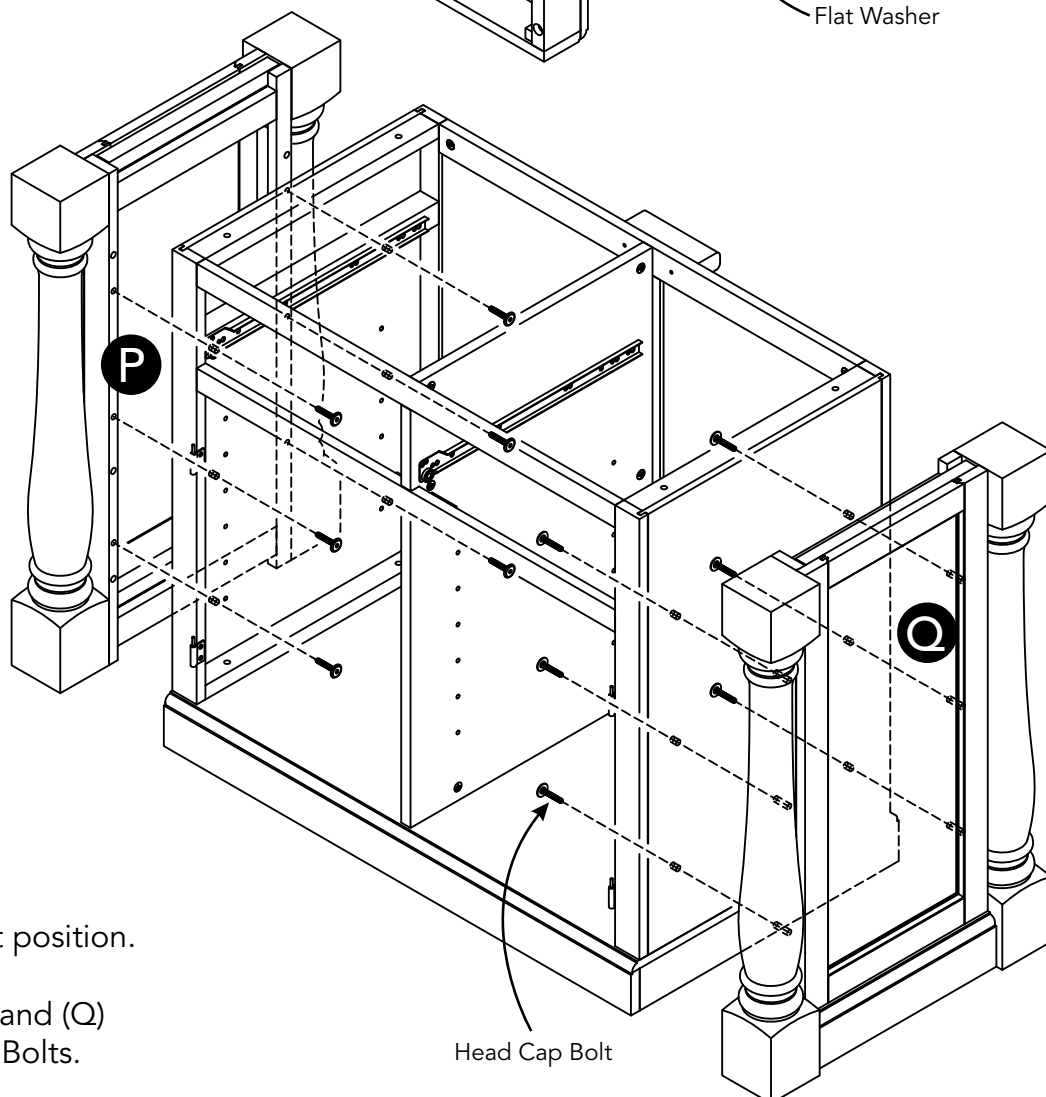
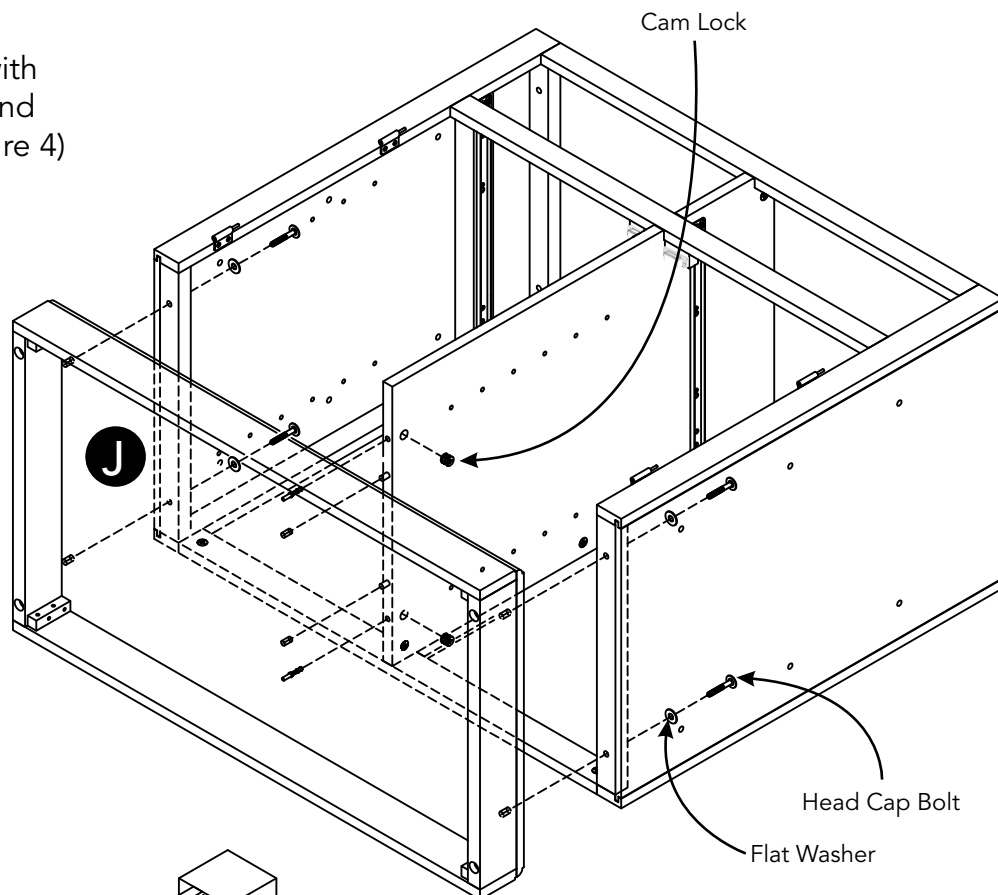


Figure 4



STEP 6

Turn unit to its' upright position.

Attach Frame Legs (P) and (Q) to unit with Head Cap Bolts.

Assembly Instructions 5/8

STEP 7

Attach Doors (M) and (N) to unit by sliding the door lift hinges into side panel lift hinges. (See Figure 5)

Attach Knobs to Doors (M) and (N) with Machine Screws. (See Figure 6)

Level unit by adjusting the adjustable levelers on the bottom of unit. (See Figure 7)

Insert 3/4" Round Head Screws into pre-drilled holes of back panel.

Note: Unit must be level before tightening these screws.

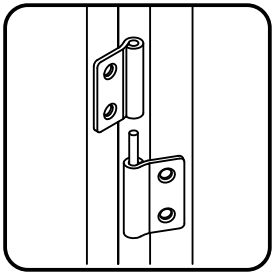
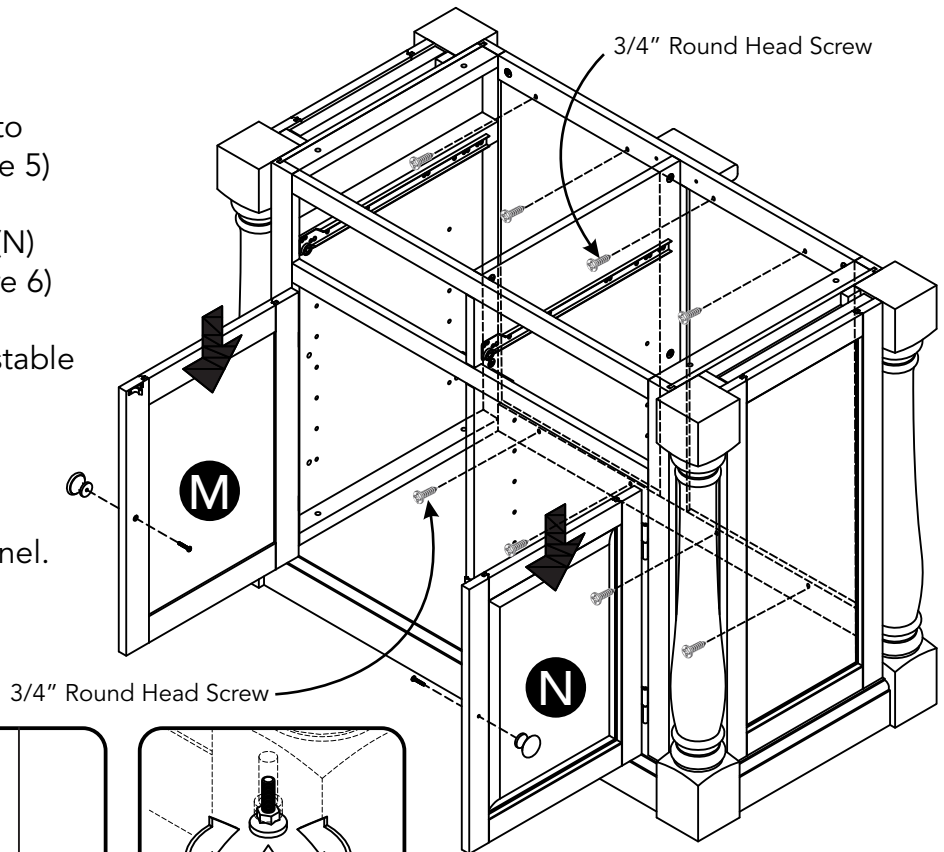


Figure 5

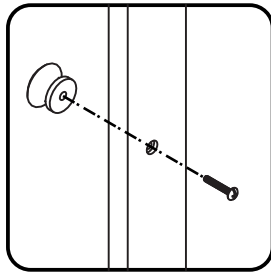


Figure 6

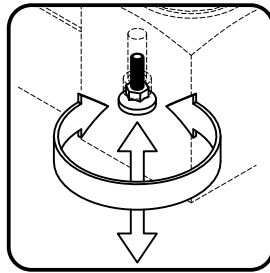


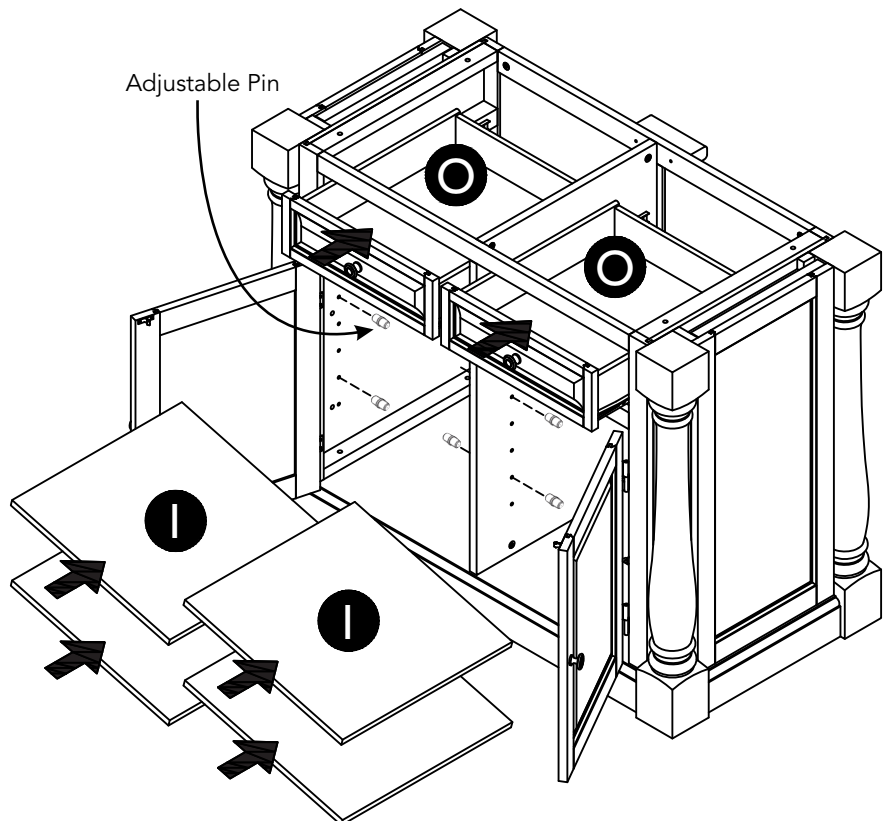
Figure 7

STEP 8

Slide Drawers (O) into place.

Insert Adjustable Pins into side panels and middle panel at desired level.

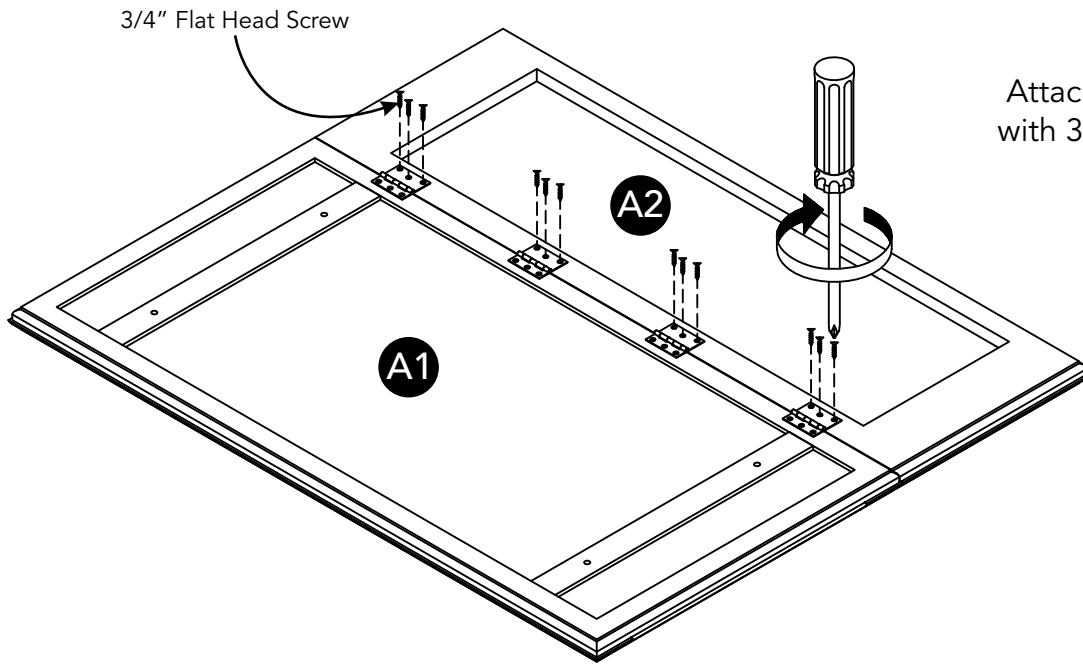
Place Shelves (I) into position.



Assembly Instructions 6/8

STEP 9

Attach Top (A1) to Top (A2) with 3/4" Flat Head Screws.



STEP 10

Pull out the Drawers from unit.

Attach Top (A) to unit with Flat Washers and Head Cap Bolts. (See Figure 8)

Slide Drawers into place.

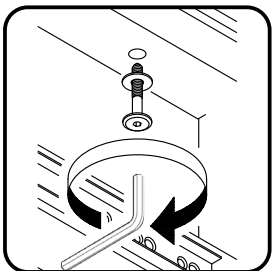
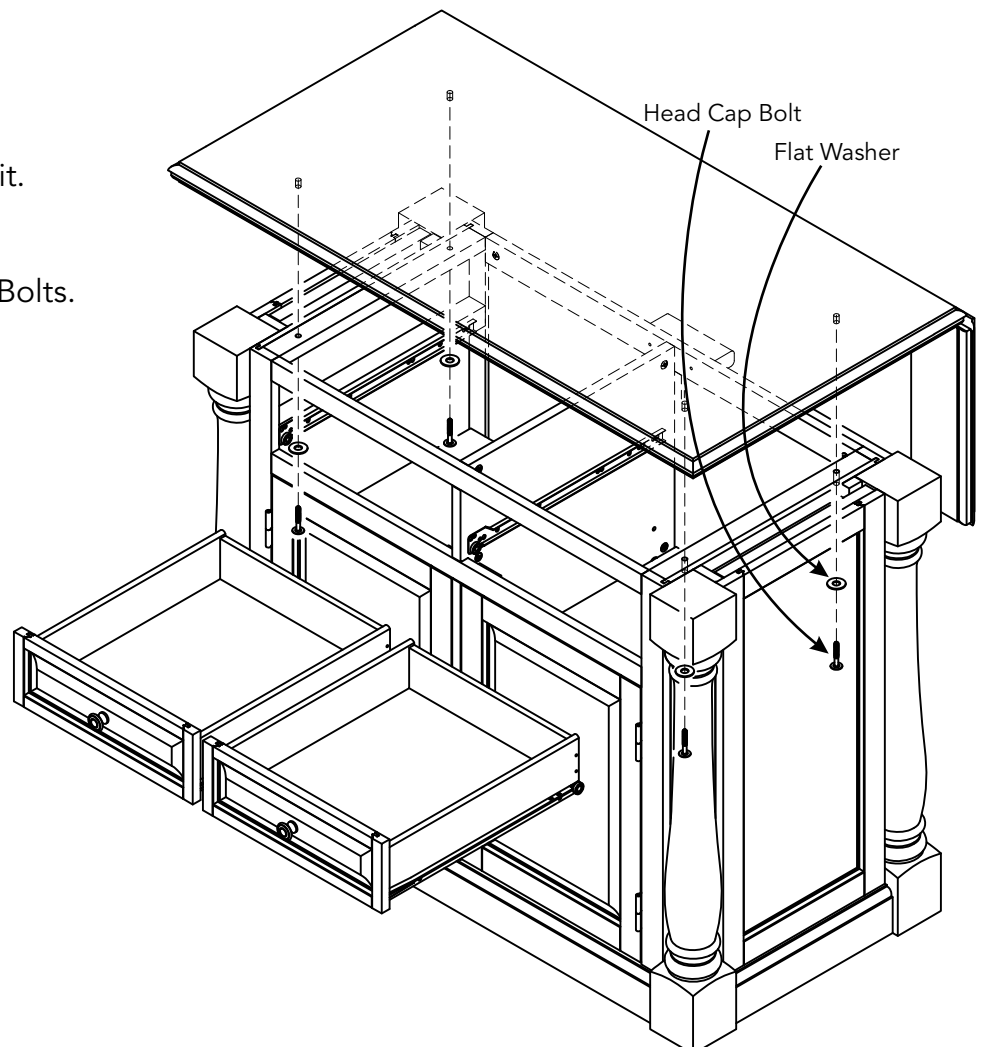


Figure 8

STEP 11

When Leaf Top is down, it should be oriented vertically.

If it not vertical and adjustment is desired, turn the adjuster on the adjuster block on Back Rail (G).
(See Figure 9)

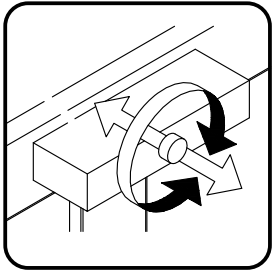
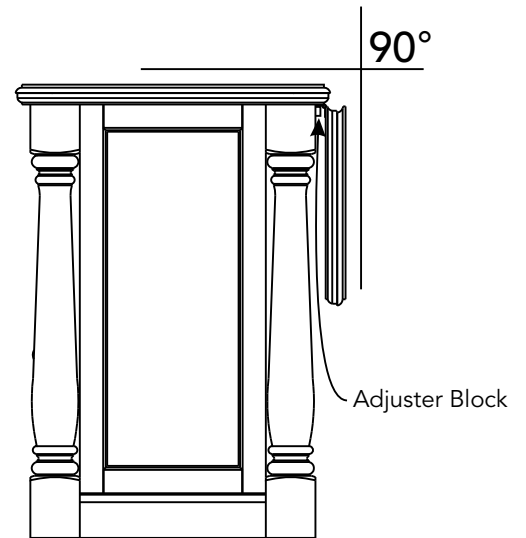


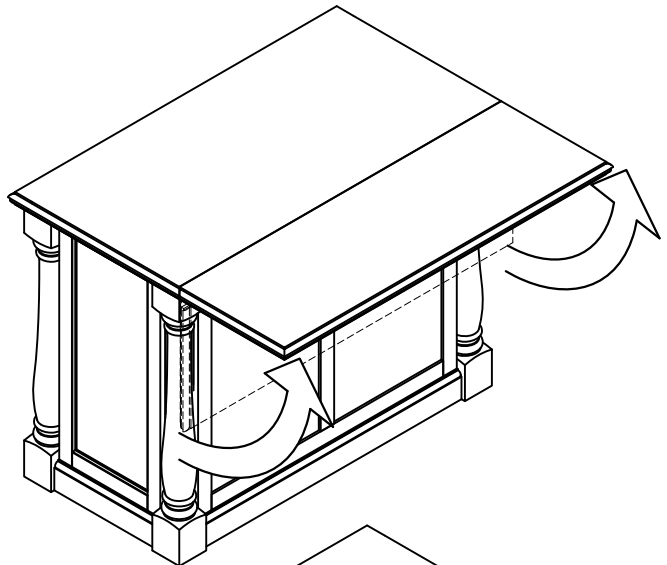
Figure 9



Top extension instructions

STEP 1

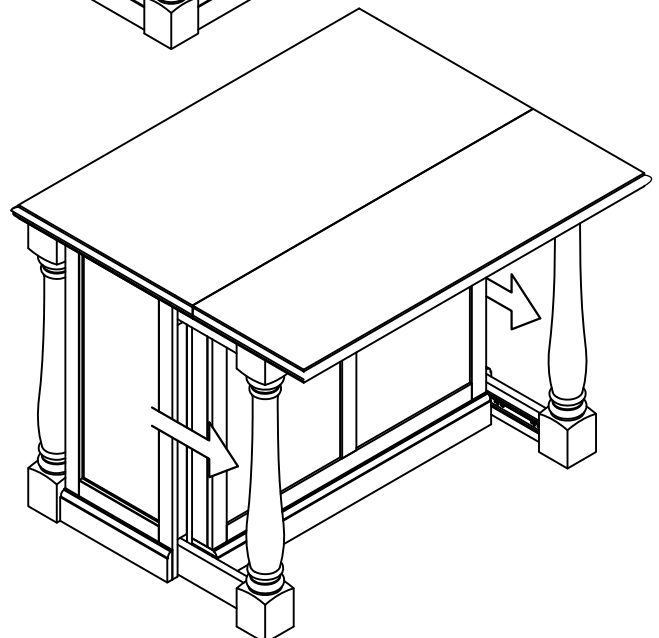
Lift up the Leaf Top.



STEP 2

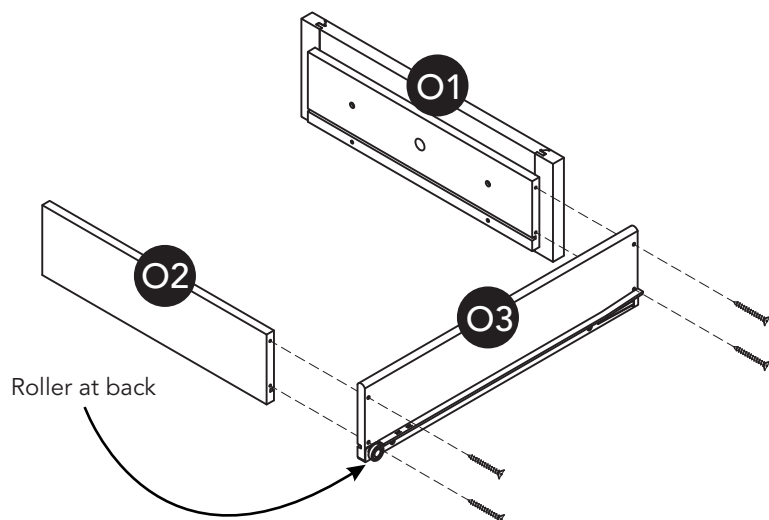
Holding the Leaf Top, pull out a back leg from the unit; then pull out the other back leg.

Note: Unit must be level for the back legs to pull out.



Assembly Instructions 8/8

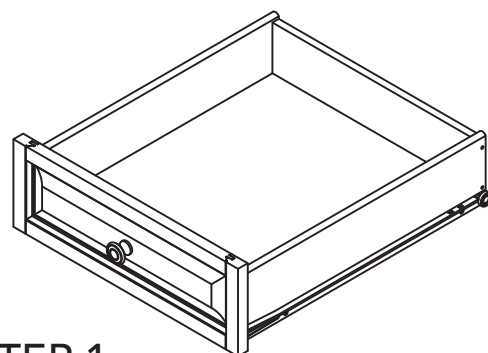
Drawer (O)



STEP 1

Attach Drawer Front (O1) and Drawer Back (O2) to Drawer Side (O3) with Wood Screws (long).

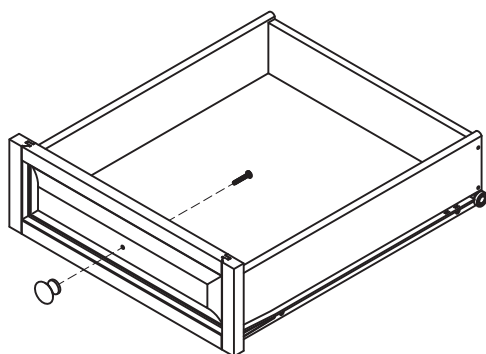
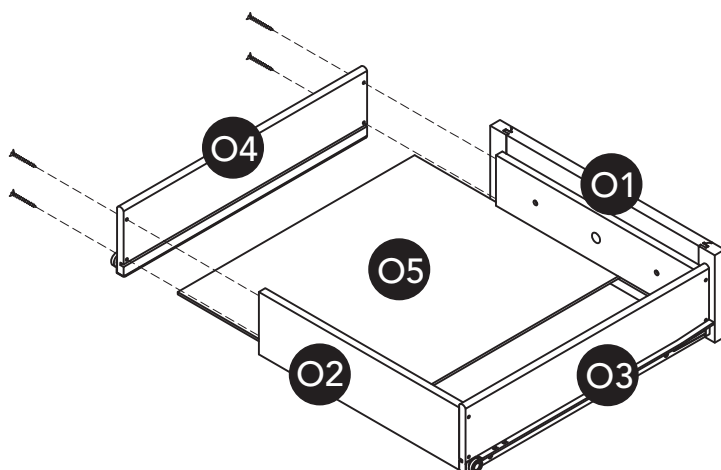
Attach Drawer Side (O4) to unit with Wood Screws (long).



STEP 2

Slide Drawer Bottom (O5) into the grooves of Drawer Fronts (O1) and Drawer Back (O2) until it meets Drawer Side (O3).

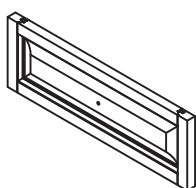
Attach Drawer Side (O4) to unit with 1" Round Head Screws.



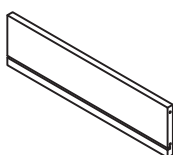
STEP 3

Attach Knob with Machine Screw.

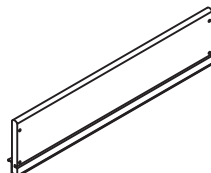
Part List



O1.
Drawer Front
2 pcs.



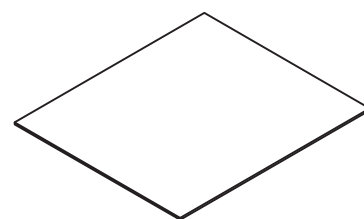
O2.
Drawer Back
2 pcs.



O3.
Drawer Side
2 pcs.



O4.
Drawer Side
2 pcs.



O5.
Drawer Bottom
2 pcs.

CARE INSTRUCTIONS

NEVER

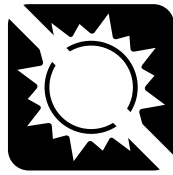
allow liquids to remain on furniture.
Absorption causes parts to warp
and split and finishes to delaminate.

NEVER

use glass cleaners on
finished furniture. Ammonia
chemically attacks the finish.



Do not use power tools
above 8 volts to assemble.
**PREVENT
CRACKING**



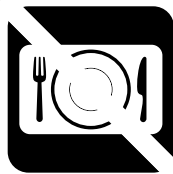
Do not place
in direct sunlight.
**PREVENT
FADING**



Do not write
directly on surface.
**PREVENT
MARKING**



Do not place hot
objects on surface.
**PREVENT
FINISH DAMAGE**



Do not use rubber
based placemats.
**PREVENT
DISCOLORING**



Do not use commercial
waxes and polishes.
**PREVENT
YELLOWING**

CLEAN

with a soft cloth moistened
in lukewarm soap and water.
Buff with a dry clean cloth.

