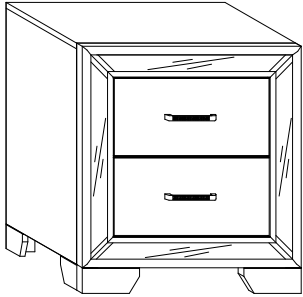


# ASSEMBLY INSTRUCTIONS

## NIGHT STAND



Thank you for purchasing this product. Please take time to read and follow the instructions below. Check that you have all parts and hardware before assembly. Parts apparently missing are often found in the packing materials. If you do not have all the parts listed, have your dealer contact us and they will be sent to you immediately.

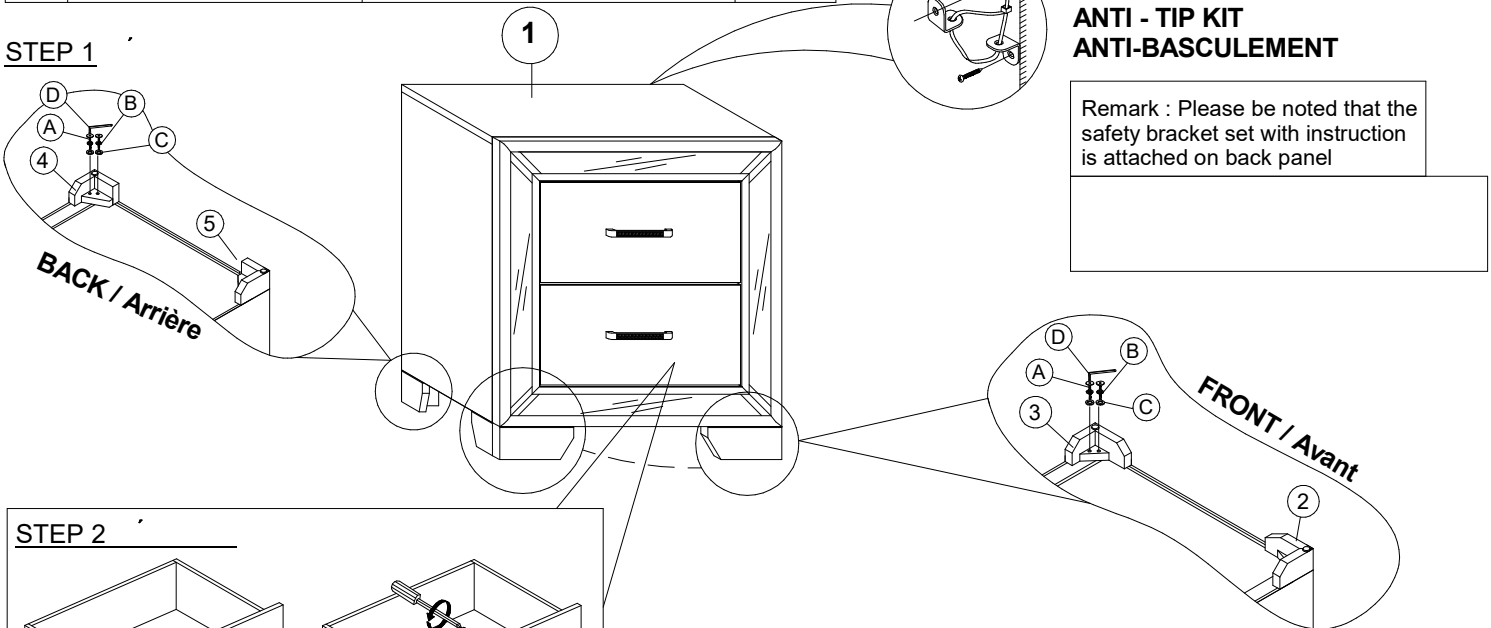


It is recommended to install protective pads under all legs and supports to avoid damage or scratches when placing furniture on a wood floor or other hard surface, and to limit indentation and prevent discoloration if placing on carpet.

PARTS LIST			
NO/N°	DRAWING/DESSIN	DESCRIPTION	QTY/QTÉ
1		NIGHT STAND / TABLE DE NUIT	1PC
2		FRONT RSF LEG / Pied droite - Avant	1PC
3		FRONT LSF LEG / Pied gauche - Avant	1PC
4		BACK RSB LEG / Pied droite - Arrière	1PC
5		BACK LSB LEG / Pied gauche - Arrière	1PC

PARTS LIST			
NO/N°	DRAWING/DESSIN	DESCRIPTION	QTY/QTÉ
A		JCBC BOLT 1/4"-20 x 1 1/2" / BOULON 1/4"-20 x 1 1/2"	8PCS
B		SPRING WASHER 1/4" x 1/4" x 1/2" x 0.16" / ROUNDELLE D'ARRET 1/4" x 1/4" x 1/2" x 0.16"	8PCS
C		FLAT WASHER 1/4" x 1/4" x 3/4" x 0.04" / ROUNDELLE PLATE 1/4" x 1/4" x 3/4" x 0.04"	8PCS
D		ALLEN KEY M4 5/32" / CLE' ALLEN M4 5/32"	1PC

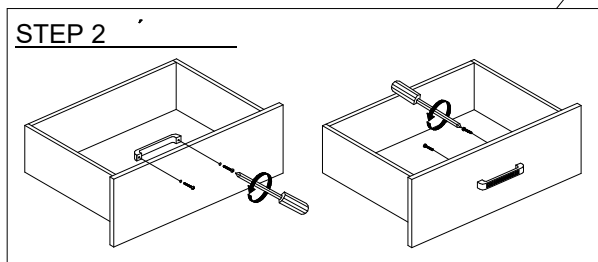
### STEP 1



### ANTI - TIP KIT ANTI-BASCULEMENT

Remark : Please be noted that the safety bracket set with instruction is attached on back panel

### STEP 2



ASSEMBLY COMPLETED

NOTE : MUST TIGHTEN SCREWS PERIODICALLY WITH USE SCREW WILL BECOME LOOSE CHECK TIGHTNESS OF ALL SCREW EVERY 6-8 WEEKS