

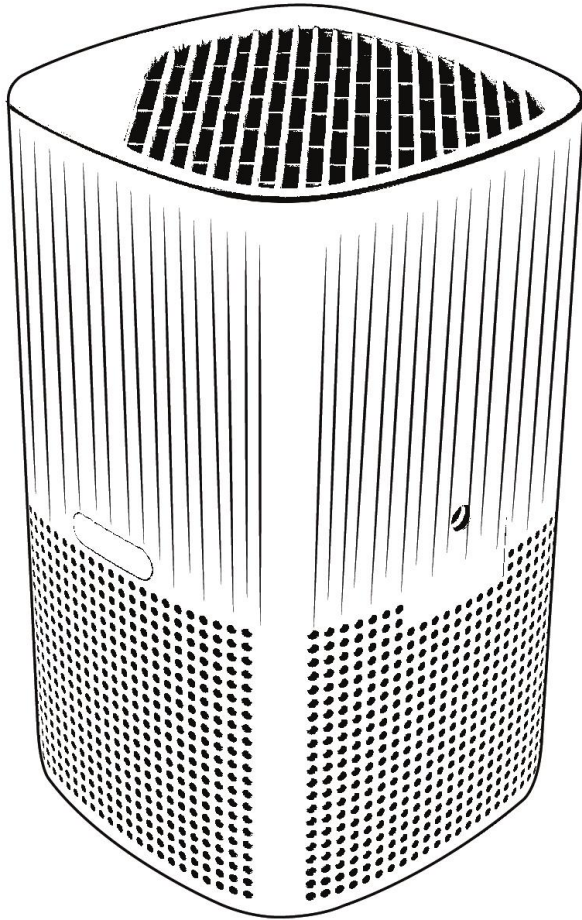


Russell Hobbs

Operating Manual

**clean air
mini aroma**

AIR PURIFIER



GUARANTEE

At Russell Hobbs, we take all our customer feedback seriously.

Feel free to contact our Customer Services Team who will be more than happy to assist you.

This product is guaranteed for 12 months from the date of the original purchase. If any defect arises due to faulty materials or workmanship, the faulty product must be returned to the place of purchase.

Refund or replacement is at the discretion of the retailer.

The following conditions apply:

- The product must be returned to the retailer with the original proof of purchase.
- The product must be installed and used in accordance with the instructions contained in this instruction guide and any other instructions for use which are supplied.
- It must be used for domestic purposes only and for its intended use.
- This guarantee does not cover wear and tear, damage, misuse or consumable parts.
- This does not affect your statutory rights.

Region	Contact	Website
UK & Northern Ireland	0345 209 7461	mda.russellhobbs.com
Ireland	1 800 938982	ie.mda.russellhobbs.com
Rest of Europe	europe@productcaregroup.com	de.mda.russellhobbs.com fr.mda.russellhobbs.com es.mda.russellhobbs.com it.mda.russellhobbs.com nl.mda.russellhobbs.com

Note your serial number below for future reference



Image for illustration purposes only

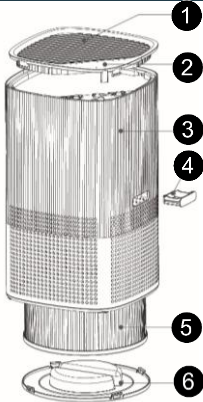
IMPORTANT SAFETY INSTRUCTIONS

- It is hazardous for anyone other than a competent person to carry out any service or repair operation that involves the removal of a cover which gives protection against exposure to electrical parts.
- Do not use with a damaged cord or plug. If the supply cord is damaged, it must be replaced by the manufacturer, its service agent or similarly qualified persons in order to avoid a hazard.
- This product is intended for household use only.
- Do not use outdoors.
- This appliance can be used by children aged from 8 years and above and persons with reduced physical, sensory or mental capabilities or lack of experience and knowledge if they have been given supervision or instruction concerning use of the appliance in a safe way and understand the hazards involved. Children should not play with the appliance. Cleaning and user maintenance should not be made by children without supervision.
- Do not operate this appliance for anything other than its intended use.
- Do not immerse whole unit in water or other liquids for cleaning.
- Unplug from outlet when not in use. Do not leave unattended while plugged in.
- Do not use if it has been dropped, damaged, left outdoors or dropped into water.
- Keep the appliance away from water; do not allow it to get wet. If unit is wet, do not plug unit into wall socket or turn unit on.

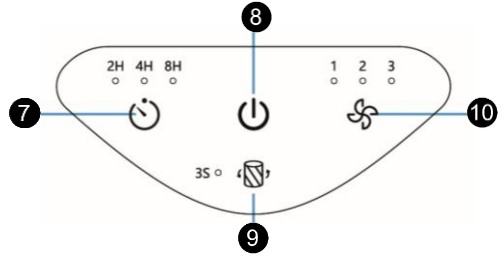
IMPORTANT SAFETY INSTRUCTIONS

- Do not handle the appliance with wet hands.
- Do not pull or carry by cord, use cord as a handle, close door on cord, pull cord around sharp corners or edges, or expose cord to heated surfaces. Do not unplug by pulling on cord.
- To protect against electrical shock do not immerse cord, plug, or appliance in water or other liquid.
- Unplug from the mains outlet when not in use, before putting on and taking off parts, and before cleaning.
- Only use the unit when fully assembled.
- Never place your fingers or other objects into any part of the appliance. Be aware that loose clothing or hair may become trapped in the appliance if improperly used.
- Before use, ensure that all of the air vents of the appliance are clear and there is no restriction of air flow.
- Caution: Appliance may disturb ashes in an open fire. Always avoid directing the appliance toward naked flames.

PARTS LIST



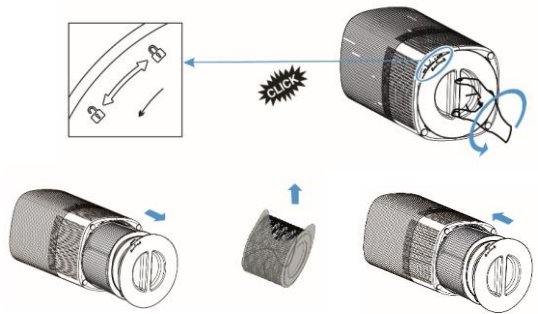
1. Air Outlet
2. Control Panel
3. Casing
4. Aroma Pad
5. Filter
6. Base cover
7. Timer
8. On/Off
9. Filter Change Indicator
10. Speed Setting



ASSEMBLY & FILTER INSTALLATION

Your air purifier comes pre-assembled in the box, but you will need to remove the protective sleeve from the filter prior to use.

- To change the filter, remove the base of the air purifier.
- Remove the old filter from the appliance.
- Take the new filter out of any protective sleeves or packaging.
- Install the new filter in the air purifier.
- Refit the base to the air purifier.



OPERATING INSTRUCTIONS

Press the Power button to switch on the Air Purifier. It will emit a beep and the machine will begin operating.



To turn off the appliance, press the Power button again and the lights & purifier will turn off.

During operation, press the timer button to select between 2 hours, 4 hours, 8 hours, or TIMER OFF.



IMPORTANT SAFETY INSTRUCTIONS

When the air purifier is switched on, press the Fan Speed button to control the operating speed. The purifier operates in low, middle, and high speed settings.



Your air purifier has a memory function, so if the purifier is switched off/on it will resume the previously selected speed.

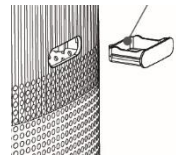
Filter Change light description When indicator lights, it means that you should check the filter if it needs to be cleaned or replaced.



Note: The filters' lifetime is based on your house air quality and using time. Using the appliance in a humid environment will reduce the lifetime of the filter. The filter lifetime should be reset if it lights up. After replacing the filter, you need to reset the filter lifetime.

- 1). Plug in the air purifier and turn it on.
- 2). Press and hold for 3 seconds.
- 3). Release and the light will turn off, indicating that the reset is complete.

Aroma Pad – Your air purifier has an aroma pad that allows you to add a few drops of essential oil fragrances (not supplied) to gently diffuse into the air. Gently press the aroma pad seat on the side of the appliance and it will pop out. Sparingly add a few drops of fragranced oil, and re-insert into the appliance. The pad can be rinsed with warm water, or replacement pads are available. We recommend replacing at least every month.



PROBLEM SOLVING

The air purifier doesn't switch on	<ul style="list-style-type: none">• Check the appliance is plugged in• Check the socket is switched on• Check another appliance in the socket• Unplug and check for any obvious signs of damage to cord or plug• If there is frost on the surface, allow to defrost• If recently used, allow to cool for 1 hour then try again
The air purifier is rattling	<ul style="list-style-type: none">• Check the filter and base is secured properly• Check there is nothing in contact with the air purifier
Unusual/Grinding sound	<ul style="list-style-type: none">• Immediately switch off and contact Customer Services
Light hasn't turned on	<ul style="list-style-type: none">• Check the appliance has switched on as first solution above• Press the Power Button• Hold the Power Button for 3 seconds.• Press the light button
The air smells or is dusty	<ul style="list-style-type: none">• Check the filter is properly installed• Ensure filter is clean and free from dust• The filter can be lightly brushed or vacuumed to remove dust. Do not wash with water• Replace filter with a new filter

Energy Consumption

Product information for power consumption and maximum time to reach applicable low power mode

Off Mode	0.3W
----------	------



Russell Hobbs

Made by Product Care Trading Limited under license from Spectrum Brands (UK) Limited. Product Care Trading Ltd, Unit 1, Green Bank Business Park, Swan Lane, Hindley Green, Wigan, WN2 4AY, United Kingdom

Product Care (Ireland) Ltd, Unit 3D North Point House, North Point Business Park, New Mallow Road, Cork, T23 AT2P, Ireland. Russell Hobbs is the registered trademark of Spectrum Brands (UK) Ltd.

UK
CA



The 'wheellie bin' symbol is known as the 'Crossed-out wheellie bin Symbol'. When this symbol is marked on a product/batteries, it means that the product/batteries should not be disposed of with your general household waste. Only discard electrical/electronic/battery items in separate collection schemes, which cater for the recovery and recycling of materials contained within. Your co-operation is vital to ensure the success of these schemes and for the protection of the environment. For your nearest disposal facility, visit www.recycle-more.co.uk or ask in store for details.

SEDEX – Connecting businesses and their global suppliers to share ethical data and enabling improvement in ethical performance. Visit www.sedex.org.uk for further information.

We reserve the right, due to possible changes to design, to alter the instruction manual without prior notice.

Revision 2.3