



VersaLite Stone®

EXQUISITE NATURAL STONE VENEERS

MADE LIGHT | MADE EASY

www.VersaLiteStone.com



the
Tile Doctor

www.TileDoctor.com

1-877-TILED0C

VersaLite Stone™ is real stone veneer that is light, flexible, and versatile enough to use virtually anywhere.


- Natural stone veneers
- Hand split and tooled surface for most natural looking product
- Use indoors or outdoors
- Waterproof
- Can be applied to virtually any surface
- 2mm thin = two stacked dimes
- Flexible yet strong – can even be used on curved surfaces
- 20 times lighter than regular stone tile – easy to handle / carry / transport / store
- Easy to cut with scissors, sheers or wet saw
- Simple and fast to install = labor savings
- Can be grouted or butt joined
- Requires stone sealers or enhancers (seal before installation)
- Up to 1500 sq.ft. per pallet – ultra thin and light means massive savings on transportation and storage allocation



95% less stone produced compared to traditional stone surfaces saves on energy and transportation costs making VersaLite Stone™ an environmentally positive choice.

FEATURE WALLS
CURVED WALLS
PILLARS
PARTITIONS
DOORS
FIREPLACES
LIGHT-DUTY RESIDENTIAL FLOORS
KITCHENS
BACKSPASHES
CABINETS
FURNITURE
OFFICES
BARS
CARS
BOATS
RV'S
OUTDOOR KITCHENS
"TINY HOUSE" APPLICATIONS
WATER FEATURES
APPLIANCE FACING
BATHROOMS
SHOWERS
SPAS
RESTAURANTS
MULTI-FAMILY HOUSING
DORM ROOMS
COMMERCIAL DÉCOR
EXTERIOR SURFACING





VersaLite Stone™'s grandeur lies in its large, true stone pattern, texture and color tones; beauty that can only be created in nature.



SIZES & OPTIONS

STOCKING PROGRAM

Many different color and texture ranges, 20 stocked in most sizes.

Non-stock colors, custom colors, and custom sizes available.

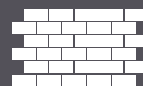
Please call for pricing and lead times.

Natural Stone Veneer Panels 2 mm
20 Colors, 2 ft x 4 ft

Ultraflex Stone Veneer Panels, 2 mm
16 Colors, 3 ft x 9 ft



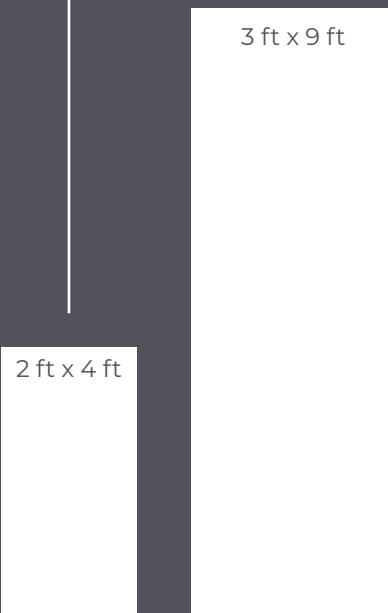
Interlocking Pattern
1 Color, 2.6 sf



Mosaic Sheets
6 Colors, 2 in x 4 in



Ledger Sheets
2 Colors, 6 in x 24 in

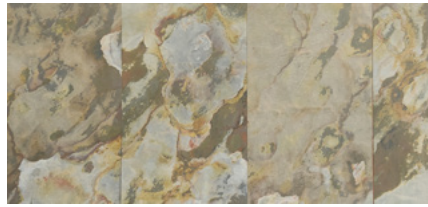


NATURAL STONE VENEER PANELS

STOCKED COLORS



Autumn Rustic



Indian Autumn



California Gold



Copper



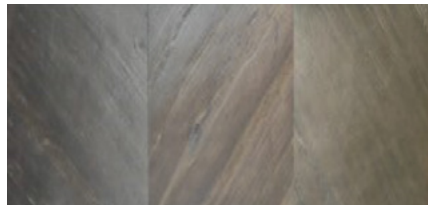
Silver Shine



Silver Shine Gold



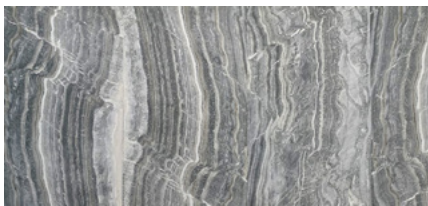
Black Star



Black Line



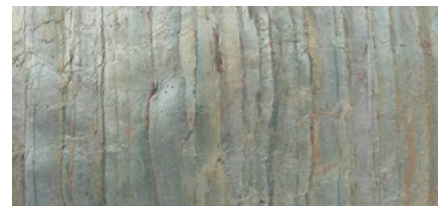
Ice White



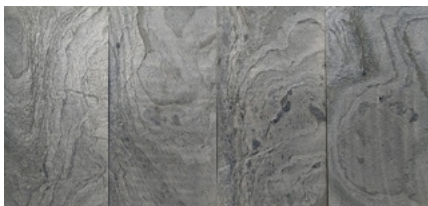
Brazil White



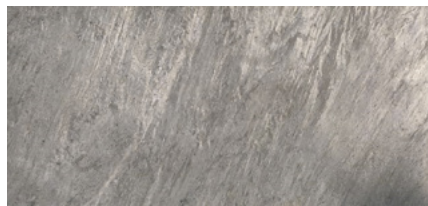
Pearl White



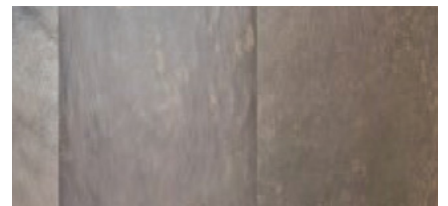
Burning Forest



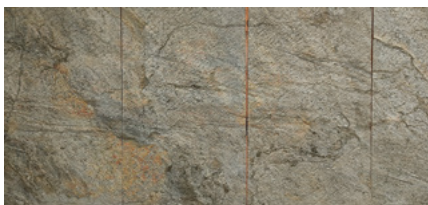
Silver Grey



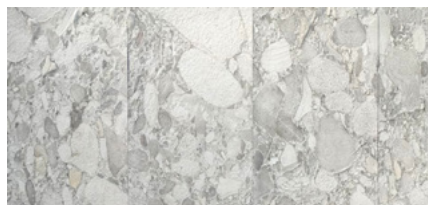
Ocean Green



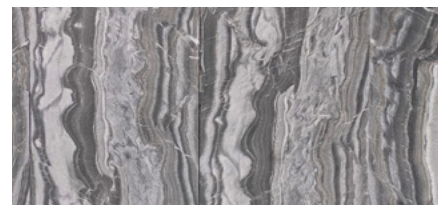
Multi Color



Gold Green



Pebble Rock



Brazil Black

BOOKMATCH

The Bookmatch selection consists of special Ultraflex panel sets of patterns that mirror each other. These must be purchased as either 2 or 4 panel sets. Images are representative of Bookmatch selections. See www.DesignTile.com/VersaLiteStone for current stock.

ASH GREY BOOKMATCH

Panel A

Panel B



Panel C

Panel D

OCEAN BLACK BOOKMATCH

Panel A

Panel B



Panel C

Panel D

INTERLOCKING, LEDGER & MOSAICS

INTERLOCKING PATTERN

The Interlocking Pattern requires grout, has mesh mount and is available in Burning Forest (pictured).



TOP: 4 Stone Panels cover 10.4 sf
BOTTOM: 1 Stone Panel covers 2.6 sf

LEDGER

The Ledger pattern is 6" x 24", mesh mount and does not require grout.



MOSAICS

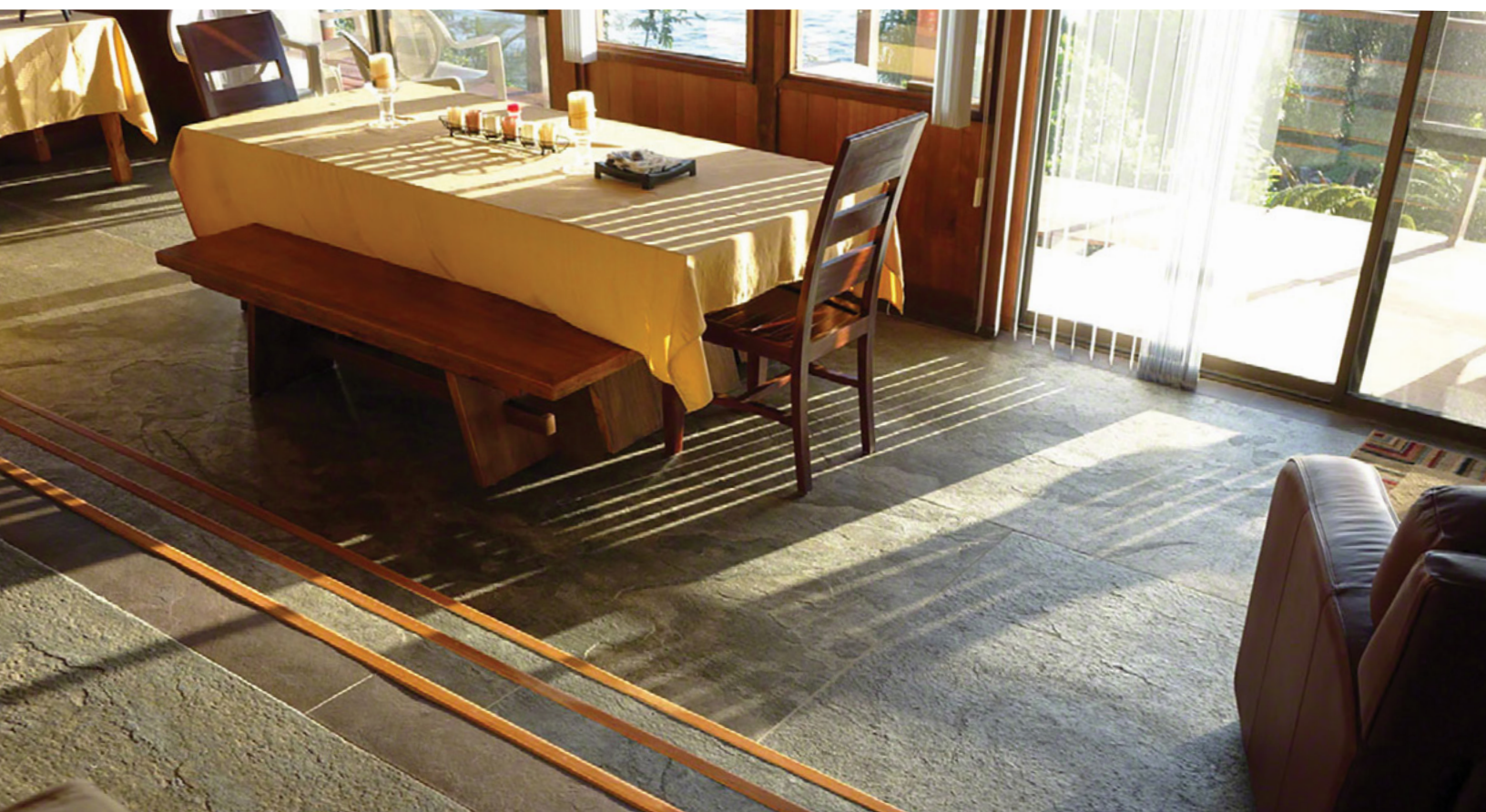
The Mosaic patterns come in brick and square, are mesh mounted and require grout.



2" x 4" Brick



VersaLite Stone™ should only be used as flooring in light residential settings with Hydrolux, a specialized sealer top coat.

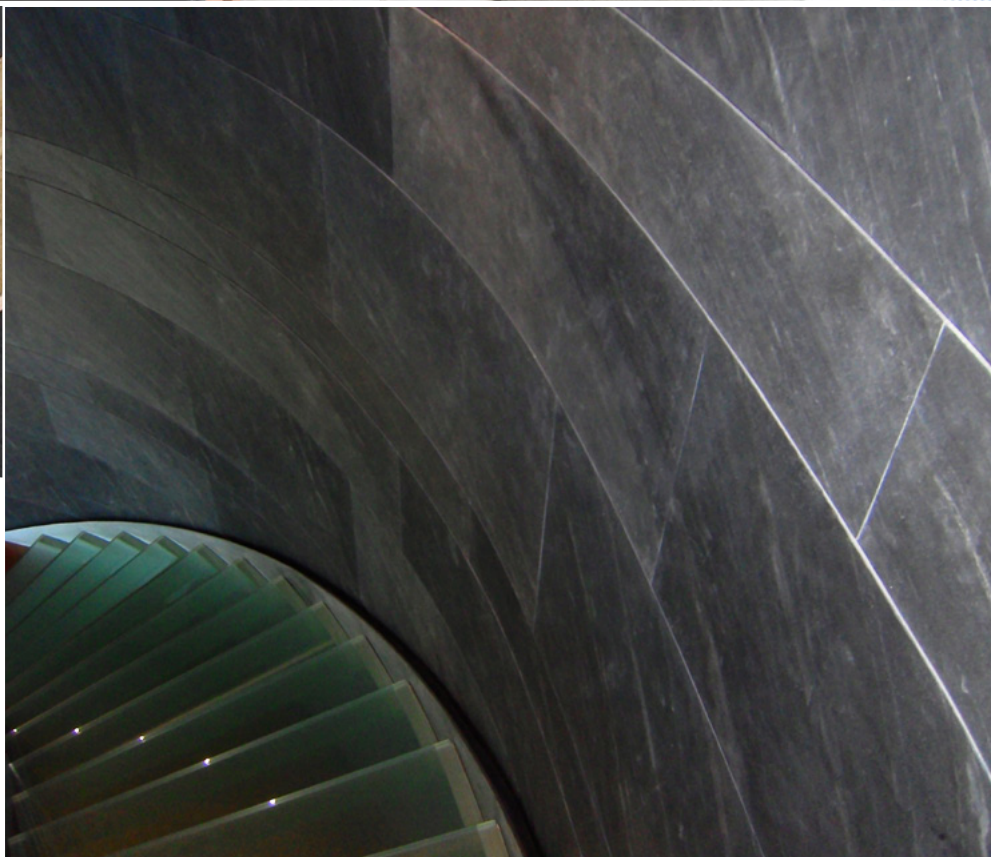




*VersaLite Stone™ can
be used in a variety of
exterior settings.*



VersaLite Stone™ is flexible enough to wrap around a column.





VersaLite Stone™ is suitable for use in wet environments, but it should not be used in submerged conditions, such as in pools.

