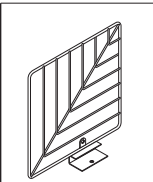
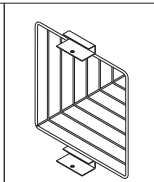
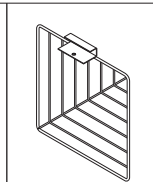
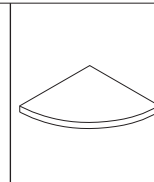
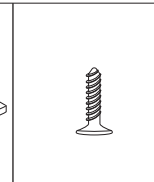
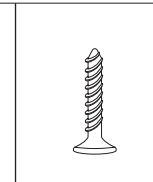
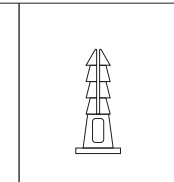
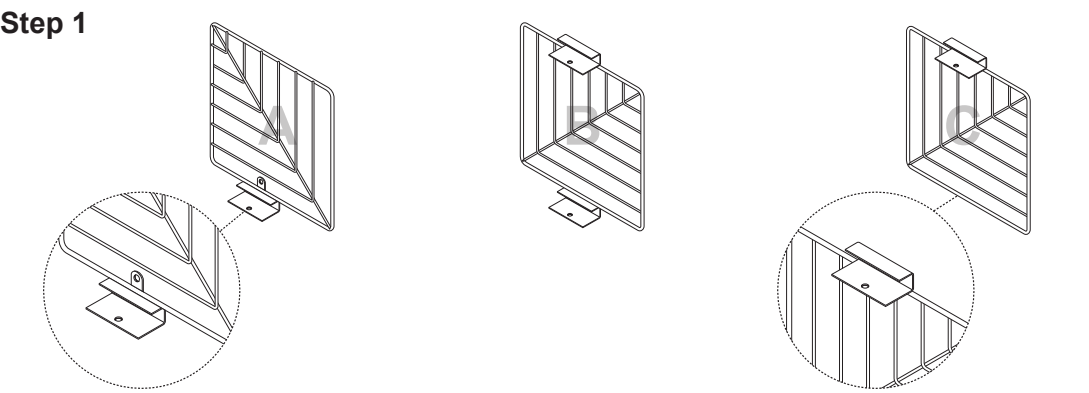
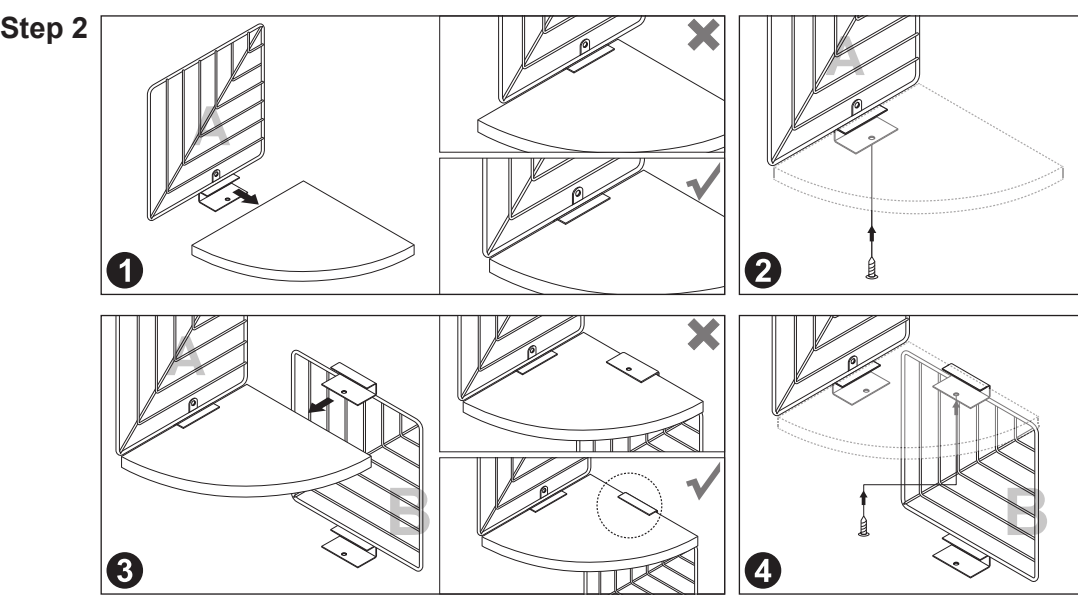


Installation

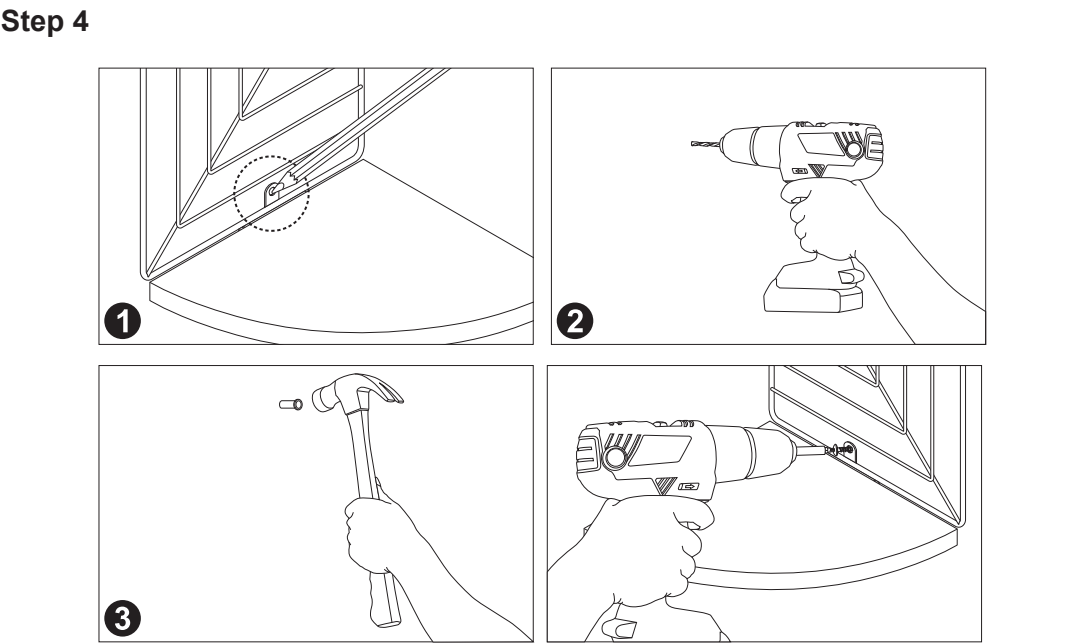
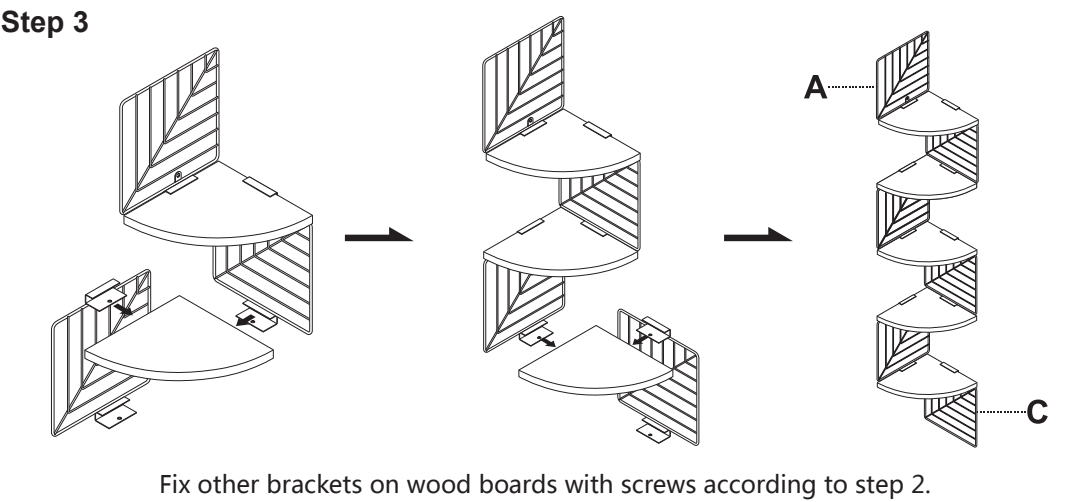
						
Bracket x 1	Bracket x 4	Bracket x 1	Wooden Board x 5	Short Screw x 10	Long Screw x 6	Wall Plug x 6



First, distinguish A, B and C from the three brackets.



Install A and wood board with a short screw. (Note: Please note the screw should be installed at the bottom of the board and align the board with the bracket.)



1. Place the shelf where you want to mount on the wall and make marks according to the holes on the bracket[1].
2. Drill holes at the marked points and hammer wall plugs into the holes[2-3]. Finally, fix the shelves to the wall with long screws[4].