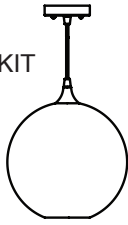


INSTALLATION INSTRUCTIONS

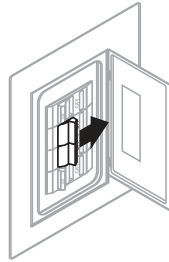
READ IMPORTANT SAFETY TIPS BEFORE PROCEEDING WITH INSTALLATION

SAFETY TIPS

PENDANT KIT

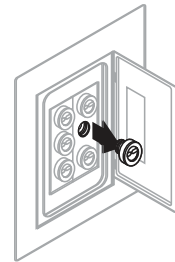


303 INSTRUCTIONS

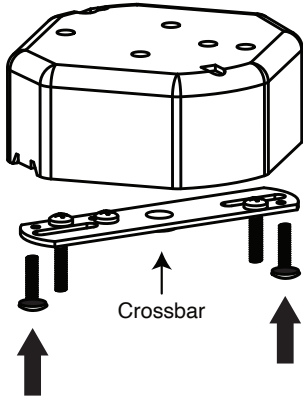


IMPORTANT

TURN OFF
POWER SOURCE



1



Mount crossbar assembly to junction box using two 8-32 screws.

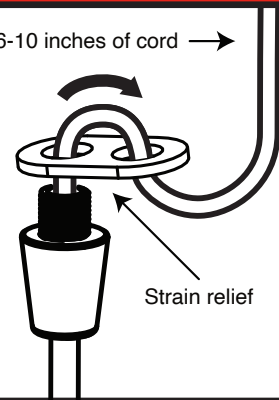
Crossbar

2

ADJUSTABLE CORD LENGTH

ATTENTION: Leave 6-10 inches of cord →

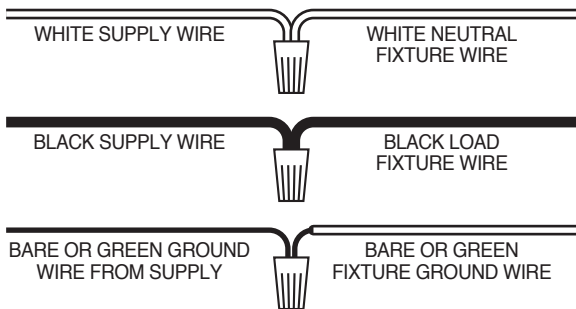
Adjust cord length by removing cord from nylon strain relief. Cut cord for desired drop leaving 6-10 inches to feed back through strain relief to make connections.



Strain relief

3

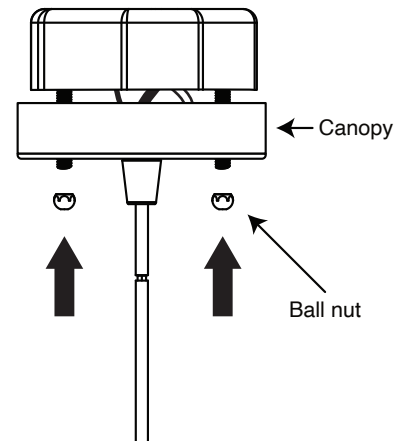
WIRING DIAGRAM



ATTENTION: Wirenuts included

4

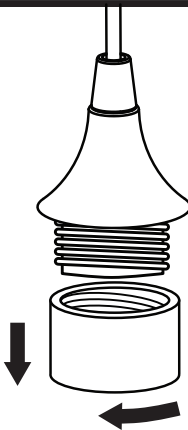
Carefully press the canopy on to the 8-32 screws on the crossbar, tucking the wires within the canopy. Place ball nuts on 2 each 8-32 studs and tighten canopy to the ceiling/ junction box.



Canopy

Ball nut

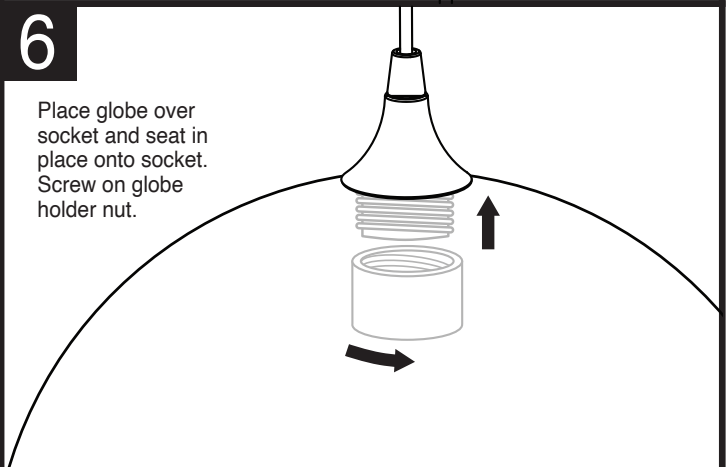
5



Unscrew globe holder nut from socket.

6

Place globe over socket and seat in place onto socket. Screw on globe holder nut.



WARNING: If any special control devices are used with this fixture, follow the instruction carefully to assure full compliance with N.E.C. requirements. If there any questions, contract a qualified electrical contractor.

WARNING: This product contain chemicals known to the State of California to cause cancer, including lead, birth defects and/or other reproductive harm. Thoroughly wash hands after Installing, handling, cleaning, or otherwise touching the product.