

# ASSEMBLY INSTRUCTIONS

---

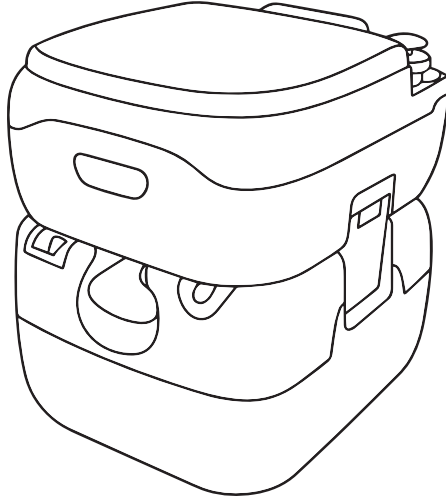
Thank you for selecting this product. Before use, please carefully read this operation manual to understand the correct use of this product.

Special attention should be paid to important safety warnings and the operation manual should be kept for reference.

Note : our company reserves the right to improve the product and instructions contained therein which may be changed without notice .

The appearance of the product depends on the material of the object.

# ASSEMBLY INSTRUCTIONS



## Portable Toilet

### Product specification:

SKU	BFTLPT-1002
1. 12L fresh water tank.	
2. Bigger bowl size for more comfort.	
3. Piston pump with T-type flush nozzle.	
4. 22L waste holding tank.	
5. Level indicator shows the level of waste water.	
6. Rotating emptying spout and air release valve for a comfortable emptying.	

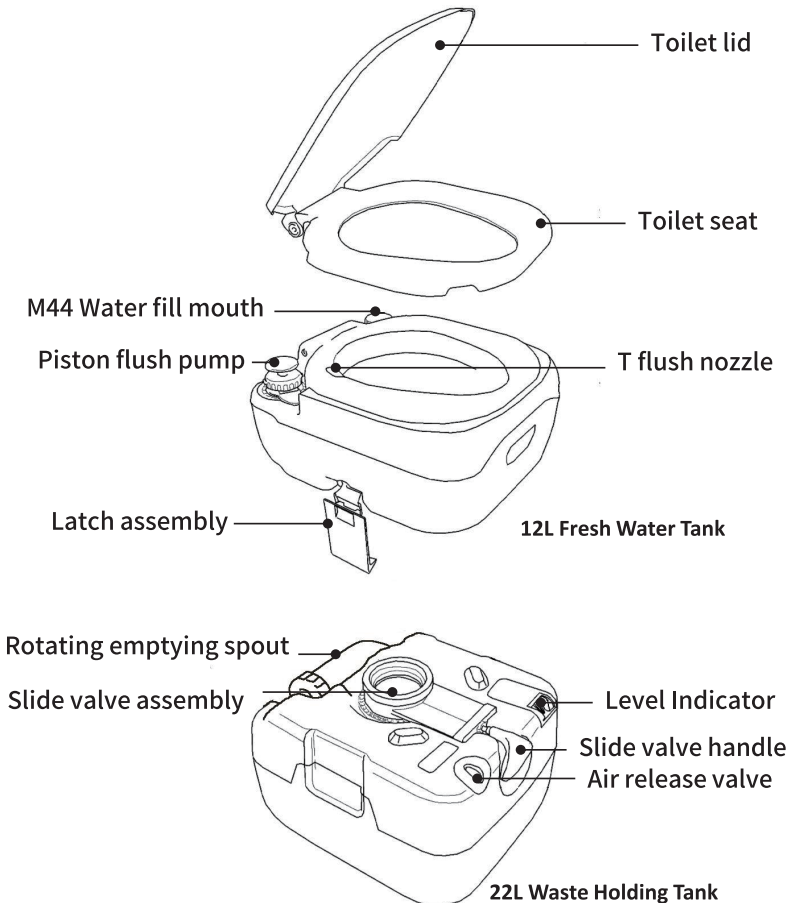
# ASSEMBLY INSTRUCTIONS

## Tip:

1. Please always assemble according to the instruction.
2. Ensure water supply pressure is no more than 0.4Mpa.
3. Hot water more than 40 degrees is forbidden.

## Product List

BFTLPT-1002 Toilet	x1
Manual	x1



## **Caution:**

- ① Place on smooth ground.
- ② Ensure all latches are locked.
- ③ Ensure the waste holding tank is assembled correctly and the cap is screwed on correctly.
- ④ Bearing weight limit is no more than 200 kg.
- ⑤ Do not lean on seat cover when using.

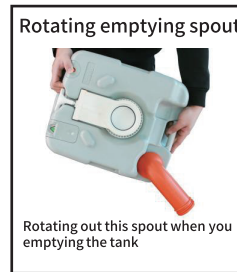
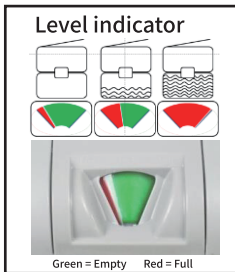
## **Use Operation:**

- ① Fill the tank with fresh water.
- ② Open slide valve.
- ③ Open seat cover.
- ④ Press piston pump for flushing.
- ⑤ Close slide valve.



## Clean Operation:

- ① Open the latch.
- ② Move away the fresh water tank.
- ③ Empty the waste holding tank.
- ④ Replace the fresh water tank.
- ⑤ Close the latch.



## Maintenance and Storage

- ① Clean the tanks for long time storage.
- ② Lubricate slide valve periodically with lubrication (Vaseline suggested).
- ③ Relax the waste holding tank cap for long time storage.
- ④ Avoid strong sunlight and high temperature.