







TECHNICAL SPECIFICATIONS OF WHITE-BODY WALL TILES

CONFORMING TO EN 14411 ISO 13006 STANDARDS ANNEX L GROUP BIII GL EB > 10%

CARATTERISTICHE TECNICHE RIVESTIMENTI IN PASTA BIANCA Conformi a norme en 14411 iso 13006 Appendice L Gruppo BIII gl eb > 10%

TECHNISCHE EIGENSCHAFTEN FÜR WANDFLIESEN AUS WEISSER MASSE NACH en 14411 iso 13006 Appendice L Gruppe BIII gl eb > 10%

CARACTÉRISTIQUES TECHNIQUES DES REVÊTEMENTS EN PÂTE BLANCHE Conformés aux normes en 14411 iso 13006 Appendice L Groupe BIII gl eb > 10%

	TECHNICAL FEATURES CARATTERISTICHE TECNICHE TECHNISCHE DATEN CARACTÉRISTIQUES TECHNIQUES	TESTING METHOD METODICA DI PROVA PRÜFVERFAHREN NORME D'ESSAIS	TEST RESULTS VALORE PRODOTTO PRODUKT WERTE VALEUR PRODUIT
	Water absorption Assorbimento d'acqua Wasseraufnahme Absorption d'eau	UNI EN ISO 10545-3	AA>10% GRUPPO BIII
	Modulus of rupture Resistenza alla flessione Biegefestigkeit Résistance à la flexion	UNI EN ISO 10545-4	RM>150Kg/cm ²
	Glaze crazing resistance Determinazione della resistenza al cavillo Glasurehaarrißbeständigkeit Résistance aux taches	UNI EN ISO 10545-11	Resistant Resiste Widerstandsfähig Résistant
	Chemical resistance Resistenza ai prodotti chimici Chemikalienbeständigkeit Résistance aux produits chimiques	UNI EN ISO 10545-14 UNI EN ISO 10545-13	Conforming Conforme Erfüllt Conforme

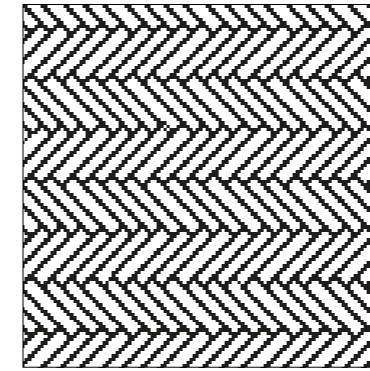
V2 MODERATE

Due to the nature of SHINE ON finish, we advise to use only mild detergents to avoid loss of the natural shine of the tile.

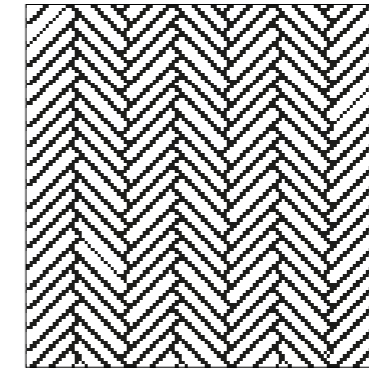
Per la natura della finitura SHINE ON, consigliamo di utilizzare solo detersivi delicati per evitare la perdita della lucentezza naturale della piastrella.

Aufgrund der Beschaffenheit von SHINE ON empfehlen wir, nur milde Reinigungsmittel zu verwenden, um den natürlichen Glanz der Fliese nicht zu verlieren.

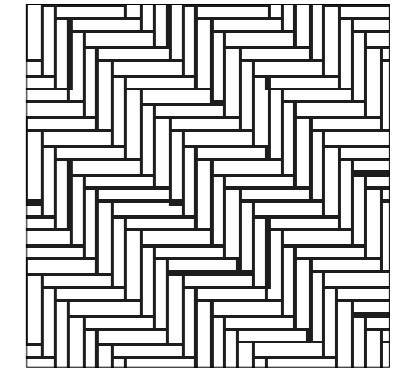
En raison de la nature de la finition SHINE ON, il est conseillé d'utiliser uniquement des détergents doux pour éviter de perdre l'éclat d'origine du carreau.



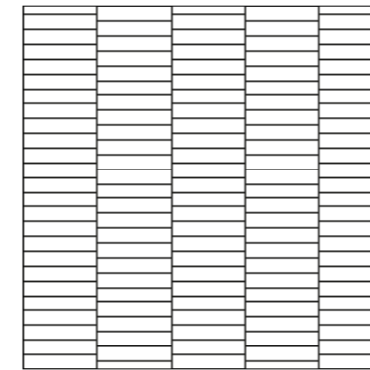
POSA 1



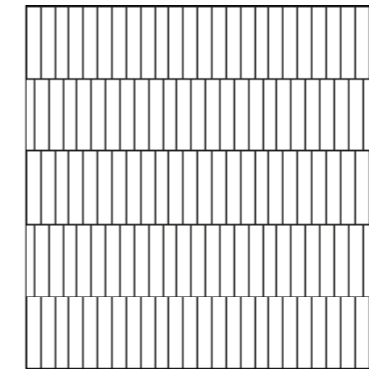
POSA 2



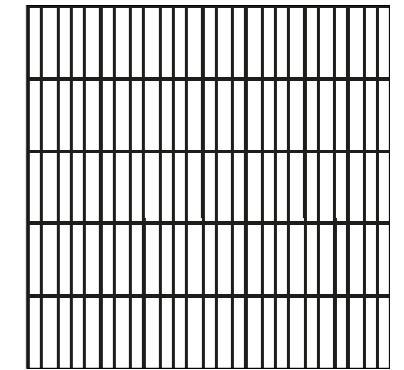
POSA 3



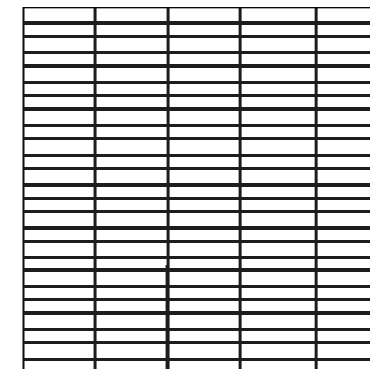
POSA 4



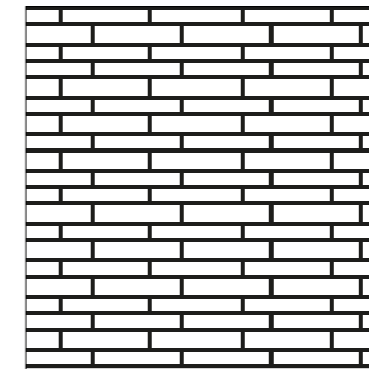
POSA 5



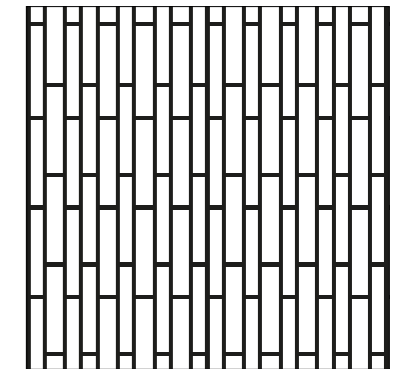
POSA 6



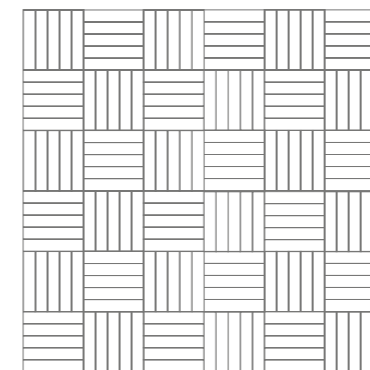
POSA 7



POSA 8



POSA 9



POSA 10

| LAYING SCHEMES | SCHEMI DI POSA



35% Salty Harbor
11% Cloudy Azure
11% Mustard Mayo
43% White Xmas

POSA 1



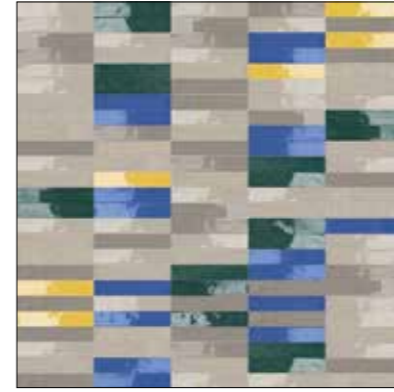
33% Berry Daiquiri
5% Baby Pink
16% Hot Mocha
5% Shine On
41% Early Morning

POSA 2



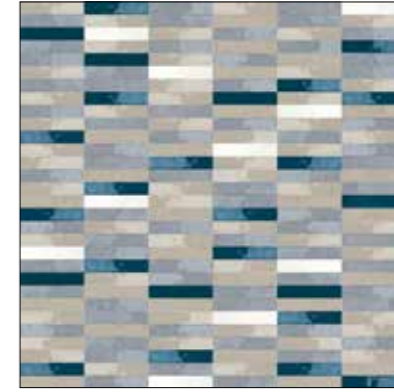
25% Jungle jam
25% Summer Vibes
25% Posh Blue
25% White Xmas

POSA 3



15% Salty Harbor
15% Jungle Jam
5% Mustard Mayo
40% Early Morning
25% Heavy Storm

POSA 7



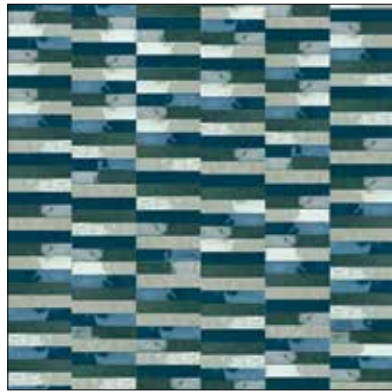
18% Summer Vibes
14% Hot Mocha
21% Jungle Jam
21% Mustard Mayo
14% Baby Pink
12% Berry Daiquiri

POSA 7



22% Posh blue
22% Mustard Mayo
28% Cloudy Azure
28% Early Morning

POSA 7



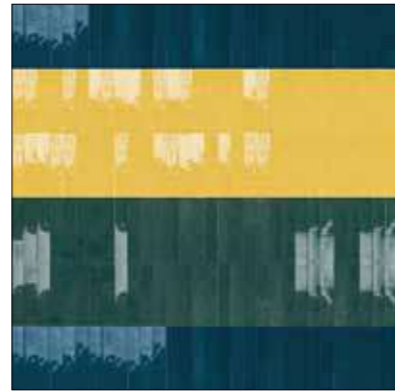
33% Posh Blue
33% Jungle Jam
33% Summer Vibes

POSA 4



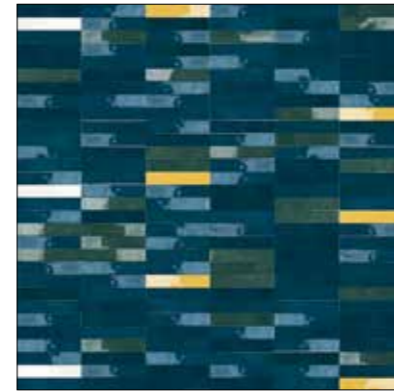
67% Early Morning
33% mix colors

POSA 5



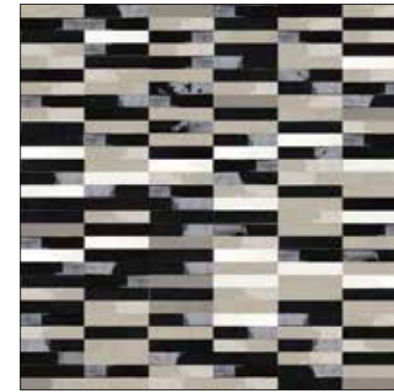
33% Posh Blue
33% Jungle Jam
33% Mustard Mayo

POSA 6



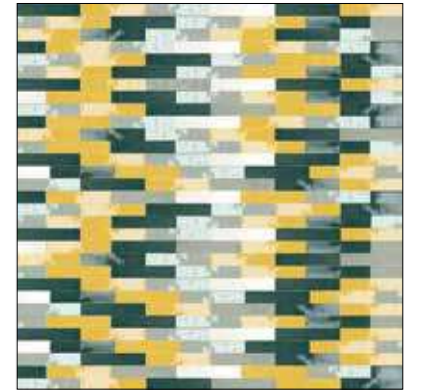
75% Posh Blue
7% Mustard Mayo
14% Jungle Jam
4% White Xmas

POSA 7



55% Dark Sky
27% Early Morning
8% Heavy Storm
10% White Xmas

POSA 7



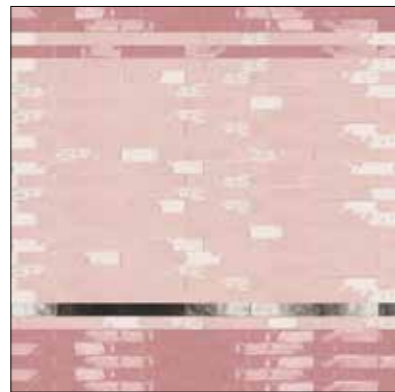
34% Jungle Jam
31% Mustard Mayo
26% Summer Vibes
9% White Xmas

POSA 8



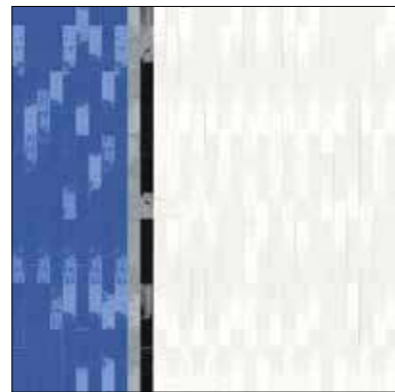
33% Hot Mocha
33% Heavy Storm
33% Early Morning

POSA 7



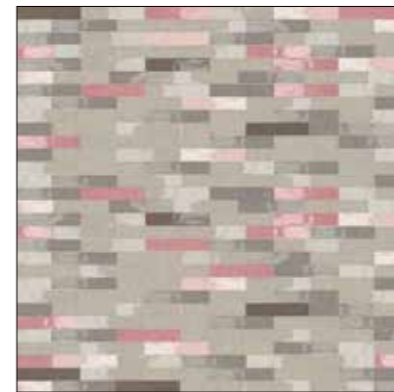
35% Berry Daiquiri
60% Baby Pink
5% Shine On

POSA 8



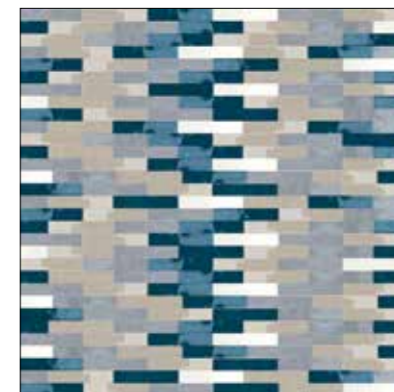
37% Salty Harbor
53% White Xmas
5% Dark Sky
5% Cloudy Azure

POSA 9



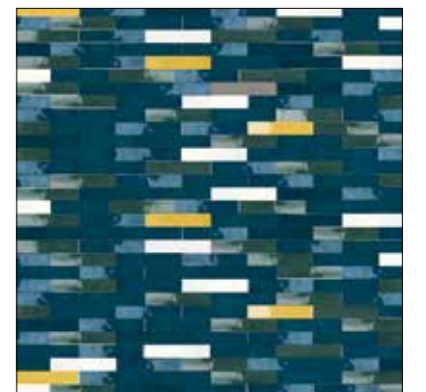
6% Hot Mocha
42% Early Morning
25% Heavy Storm
12% Baby Pink
15% Berry Daiquiri

POSA 8



31% Early Morning
22% Posh Blue
34% Cloudy Azure
13% White Xmas

POSA 8



74% Posh Blue
5% Mustard Mayo
13% Jungle Jam
8% White Xmas

POSA 8