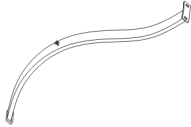


ASSEMBLY INSTRUCTION

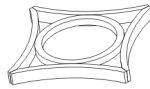
COUNTER HEIGHT TABLE IN BURNISHED OAK FINISH

A Leg



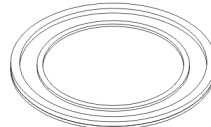
4PCS

B Right Leg Assembly



1PC

C Stretcher



1PC

D Bolt
1/4*15mm



16PCS

E Spring Washer
φ1/4



16PCS

F Flat Washer
φ1/4*13mm

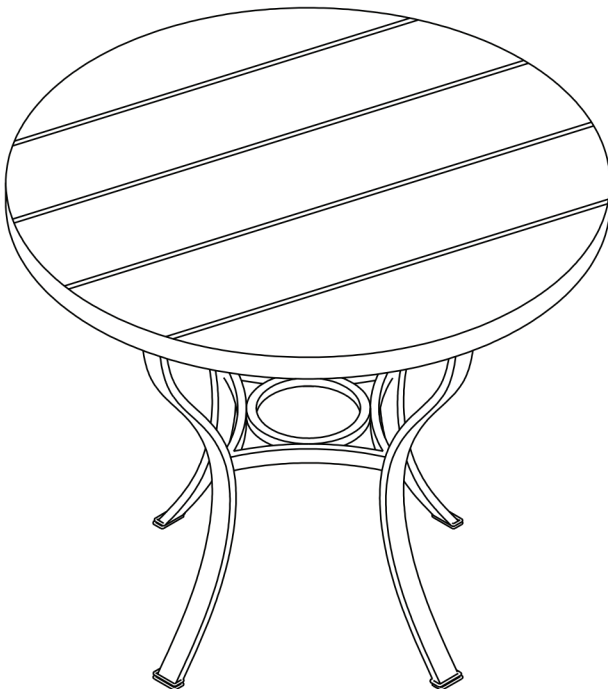


16PCS

G Allen Wrench
4mm

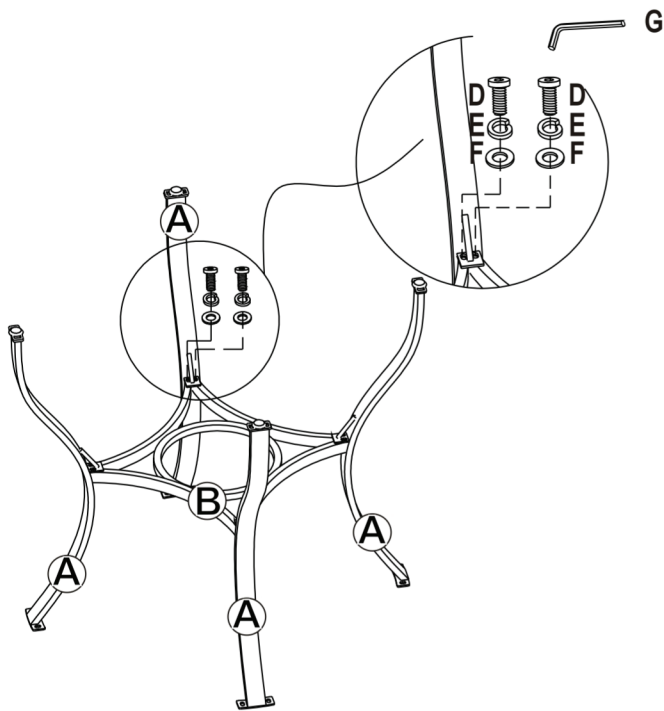


1PC

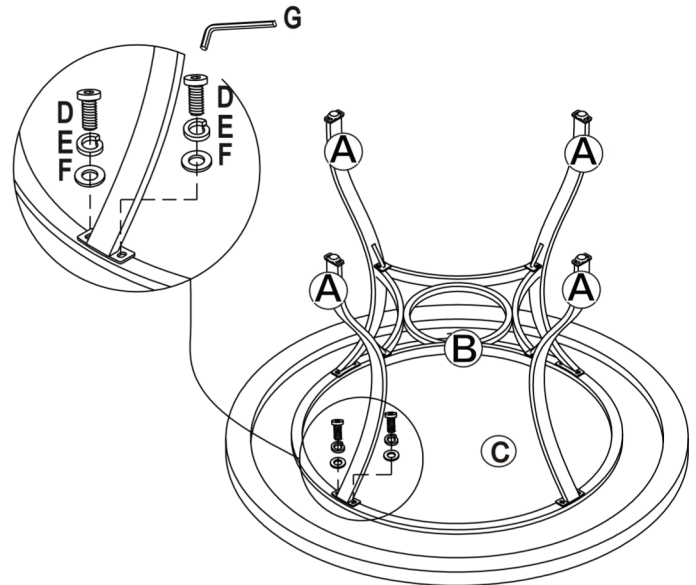


This page lists all contents included in the box. Please take the time to identify the hardware as well as individual components to this product. As you unpack and prepare for assembly, place the contents on a carpeted or padded area to protect them from damage.

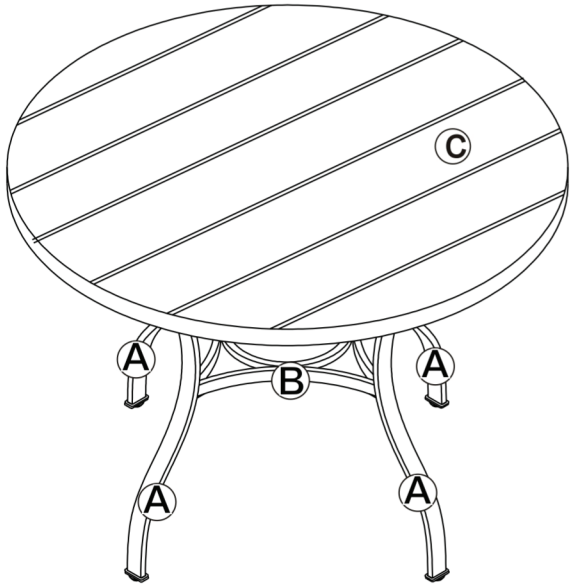
1 Assemble the leg (A) and stretcher(C) together by bolt(D),spring washer(E),flat washer(F) with allen wrench(G);But not too tight.



2 Assemble the table base (refer to step one) to the stretcher (C) by bolt(D),spring washer(E), flat washer(F) with allen wrench(G);Tighten all the bolts.



3 Turn over the table and check.



Cleaning&Care

Treat surface with care. Surface is resistant to scratches but is not scratch resistant. Clean surfaces with a dry or damp soft cloth. Do not use abrasive cleaners. Hardware may loosen over time. Periodically check that all connections are tight.