

LED DISC LIGHT

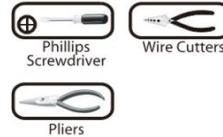


INSTRUCTIONS PERTAINING TO RISK OF FIRE OR INJURY TO PERSONS
READ ALL INSTRUCTIONS

IMPORTANT SAFETY INSTRUCTIONS

SAVE THESE INSTRUCTIONS

TOOLS AND MATERIALS REQUIRED:



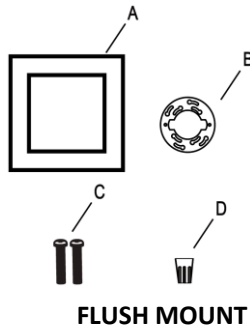
When wiring, should consult local licensed electrician to meet National Electrical Code or local Electrical code.

SAFETY PRECAUTIONS:

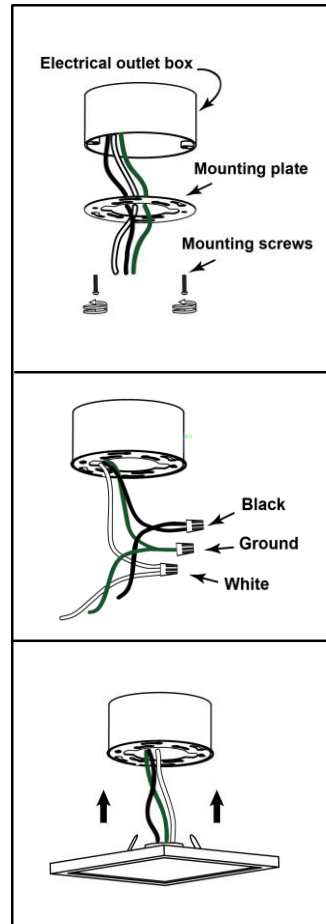
1. TURN OFF ELECTRICAL POWER BEFORE STARTING INSTALLATION OF LIGHT FIXTURE.
2. THIS PRODUCT MUST BE INSTALLED IN ACCORDANCE WITH THE APPLICABLE INSTALLATION CODE BY A CERTIFIED ELECTRICIAN FAMILIAR WITH LOCAL MUNICIPAL CODES AND REQUIREMENTS.
3. CAUTION-RISK OF ELECTRIC SHOCK. CONSULT A QUALIFIED ELECTRICIAN TO ENSURE CORRECT BRANCH CIRCUIT CONDUCTOR.

PACKAGE CONTENTS

PART	DESCRIPTION	QTY
A	LED disc light	1
B	Mounting plate	1
C	Mounting screws	2
D	Wire nut	3



WARNING: Wet-rated lighting fixtures are used in places with direct exposure to water. These locations include almost all outdoor lights, including landscape lighting such as path lights and ground wells. Fixtures rated for wet locations use waterproof seals to protect their internal components from moisture. This does not cover the section where the light is mounted to the junction box. If water is entering through the junction box, it will enter the light fixture, and that is classified as an electrical hazard by most municipal and fire departments.



1. Prior to installation, install mounting plate into the junction box with mounting screws based on your required direction for square fixture. Drive screws completely to the end of the junction box.
2. Connect supply wires to wires on fixture with wire nuts. Connect white to white, black to black and copper wire to copper wire as grounding connection.
3. Completing the installation by pushing the fixture springs towards the open bracket into the junction box.