

ASSEMBLY INSTRUCTIONS

MODEL: 3466BLK-03 ELEANOR BENCH (BLACK)

Please read instructions carefully

Remove all wrapping materials, staples and packing straps from the carton.



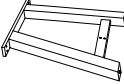






Refer to Parts List and Hardware List and ensure they are complete before you start assembling.

Place all wooden parts on a clean, flat and soft surface (e.g carpet or rug) to prevent parts from being scratched.

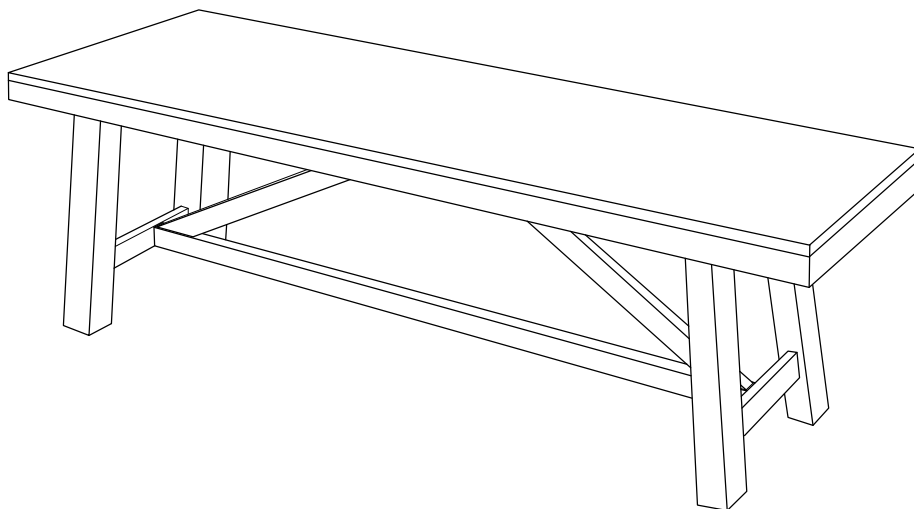
CAUTIONS:1) DO NOT FULLY TIGHTEN BOLTS AND NUTS UNTIL ALL PARTS HAVE BEEN ASSEMBLED.

2) DO NOT OVER-TIGHTEN BOLTS AND NUTS .

3) KEEP ALL HARDWARE PARTS OUT OF REACH OF CHILDREN.

Designation	Part	Qty	Part List	Hardware	Qty	Hardware List
BENCH TOP	P1	1PC		H1	12PCS	BOLT Ø1/4" x 38mm 
BENCH LEGS	P2	2PCS		H2	8PCS	SPRING WASHER Ø5/16" x 13mm 
BENCH LONG STRETCHER	P3	1PC		H3	8PCS	FLAT WASHER Ø5/16" x 19mm 
BENCH SHORT STRETCHER	P4	2PCS		H4	2PCS	SCREW Ø4" x 40mm 
				H5	1PC	ALLEN KEY M4 x 59mm 

COMPLETE ASSEMBLY



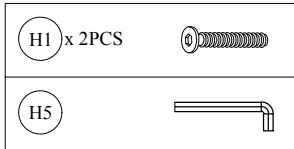
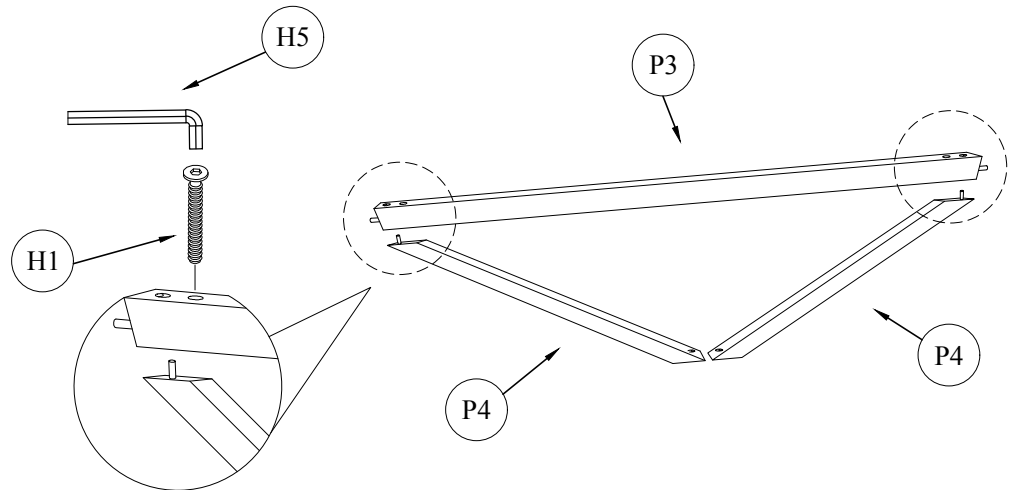
ASSEMBLY INSTRUCTIONS

MODEL: 3466BLK-03 ELEANOR BENCH (BLACK)

STEP 1

Prepare the bench stretchers by attaching the long and short pieces. Connect the BENCH SHORT STRETCHER (P4) to the BENCH LONG STRETCHER (P3) by using the wooden pegs fixed in the BENCH SHORT STRETCHER (P4) and connect both to each side (one to the left, one to the right). Fix the stretchers using the bolts listed below to secure it on each corner.

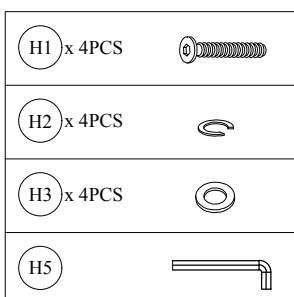
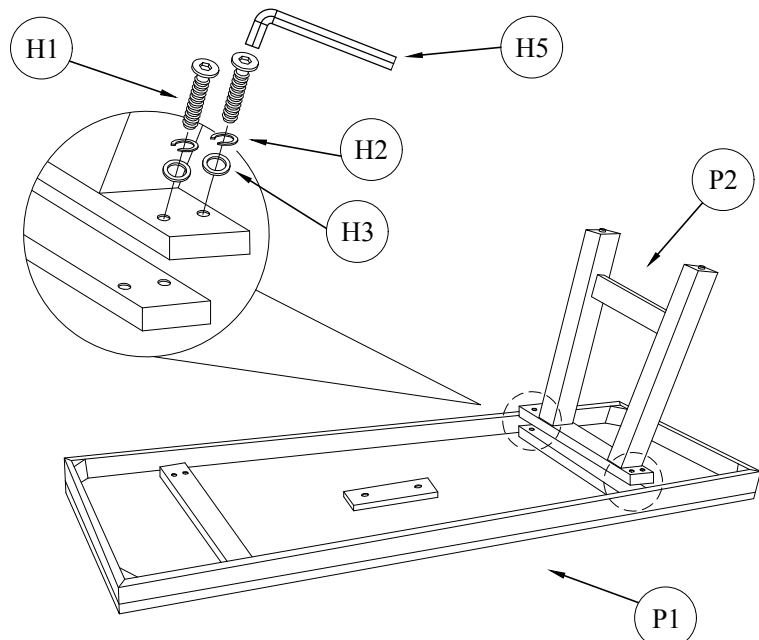
Align the BOLT (H1) through the connecting block holes. See image below.
Tighten all bolts with ALLEN KEY (H5).



STEP 2

Prepare the BENCH TOP (P1) by placing it upside-down on a flat, soft & clean surface.
Assemble BENCH LEGS (P2) by attaching it to the connecting blocks in the BENCH TOP.

Align BOLT (H1) fitted with a SPRING WASHER (H2) & a FLAT WASHER (H3) through the connecting block holes.
See image below.
Tighten all the bolts with ALLEN KEY (H5).



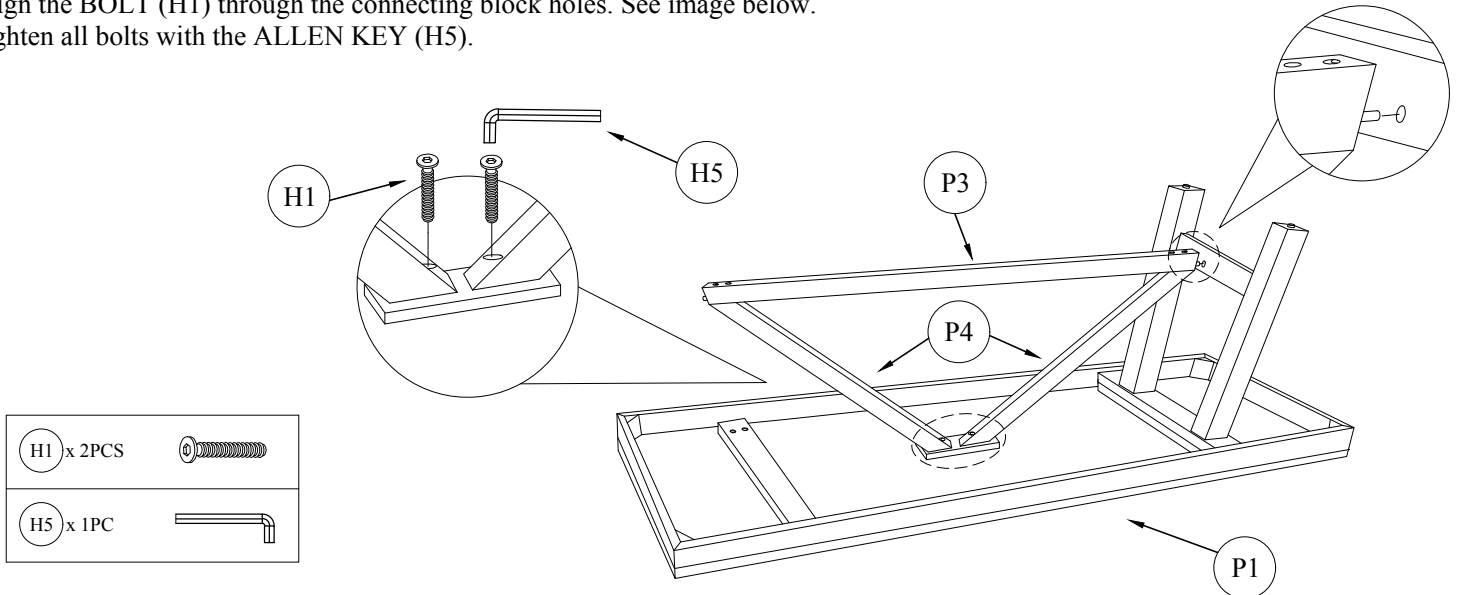
ASSEMBLY INSTRUCTIONS

MODEL: 3466BLK-03 ELEANOR BENCH (BLACK)

STEP 3

Align the assembled STRETCHERS (P3), (P4) completed in STEP 1 so that they connect to the BENCH TOP (P1) and BENCH LEGS (P2). Use the wooden peg from the LONG STRETCHER and connect it with the Legs.

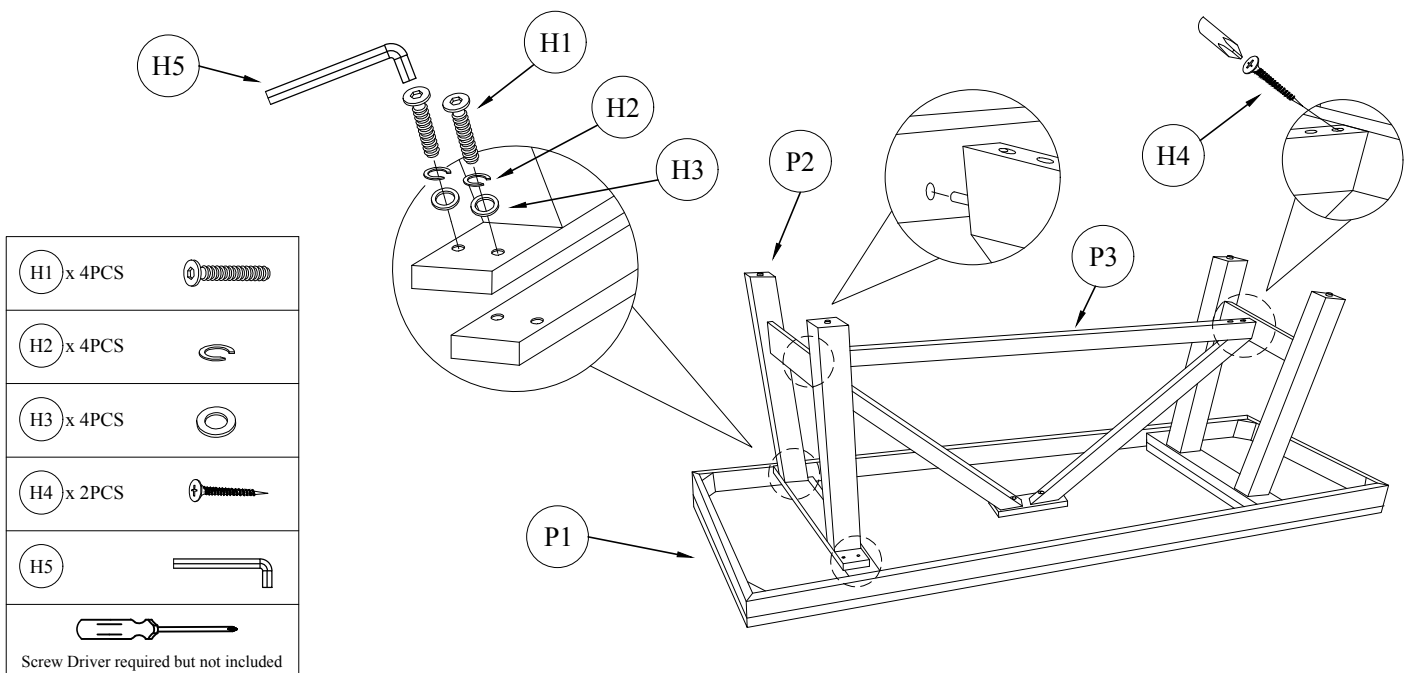
Align the BOLT (H1) through the connecting block holes. See image below.
Tighten all bolts with the ALLEN KEY (H5).



STEP 4

Repeat STEP 2 and STEP 3. To connect the other set of legs to the other side of the bench.

After installing the BOLT in the fixed positions, we proceed to screw the SCREW (H4) so that the leg frame is connected to the leg without any clearance. Repeat this on the other side of the STRETCHER, to secure on both sides of the Legs. This will fix and secure the STRETCHER.



Carefully reposition the Bench Upright with the help of Two or more adults.

CARE AND MAINTENANCE

- SAFETY** - To avoid any risk of suffocation to children or animals, dispose off the plastic bags immediately.
- CLEANING** - Clean with damp cloth and mild detergent. Do not use bleach or abrasive products.
- FITTINGS** - Tighten bolts and nuts from time to time to ensure all parts of product are securely fitted.