
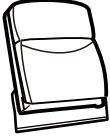
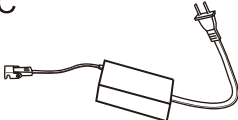



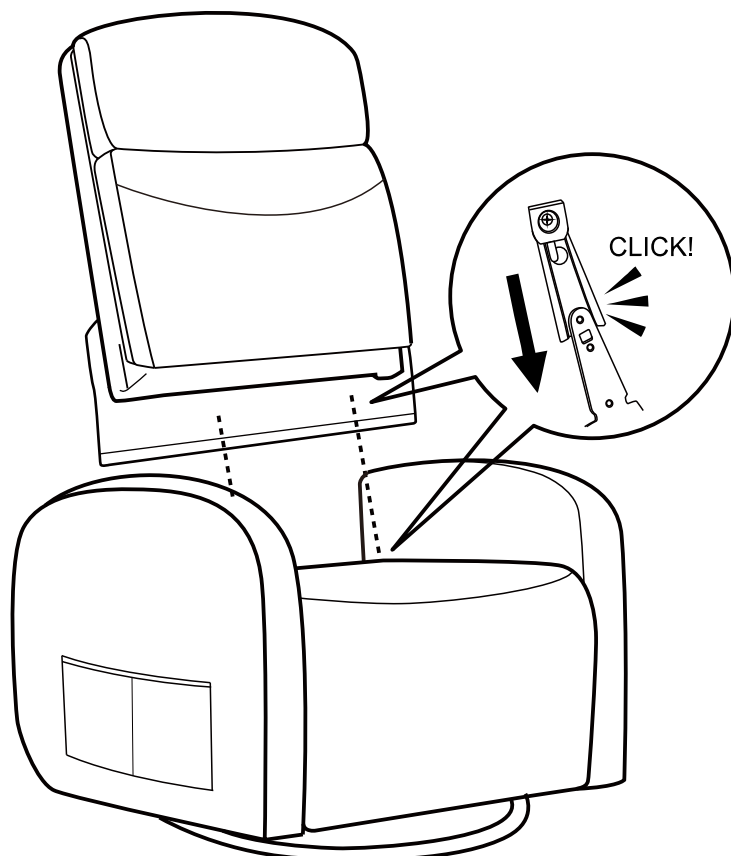
ASSEMBLY INSTRUCTIONS

FITTING LIST

A 	B 	C 	D 
Chair base	Backrest	Power source	Remote-control

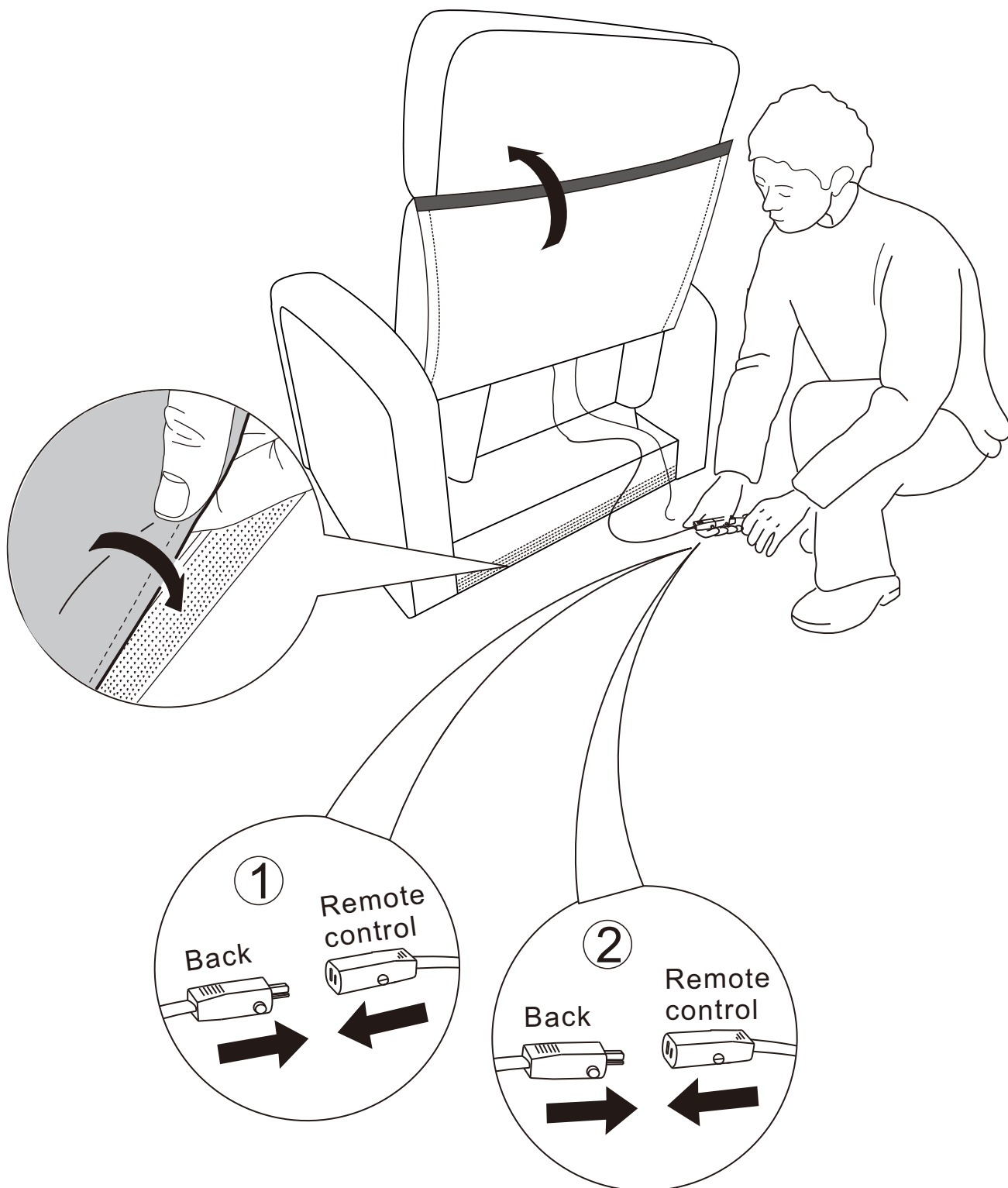
ASSEMBLY INSTRUCTIONS

STEP 1: Take out the backrest and find the position of the backrest insert and the position of the seat cushion slot. Align the insert with the two slots on the seat cushion simultaneously and gently push down. When you find that it can be fully embedded, press down again to make the insert and the slot completely buckle. When the backrest is completely installed with the seat cushion and there is no looseness, it means it is completed. Just so you know, if the backrest is loose, please check whether the insert is installed correctly. If you want to take the backrest out again, please forcefully pry open the slot and lift the backrest up at the same time.



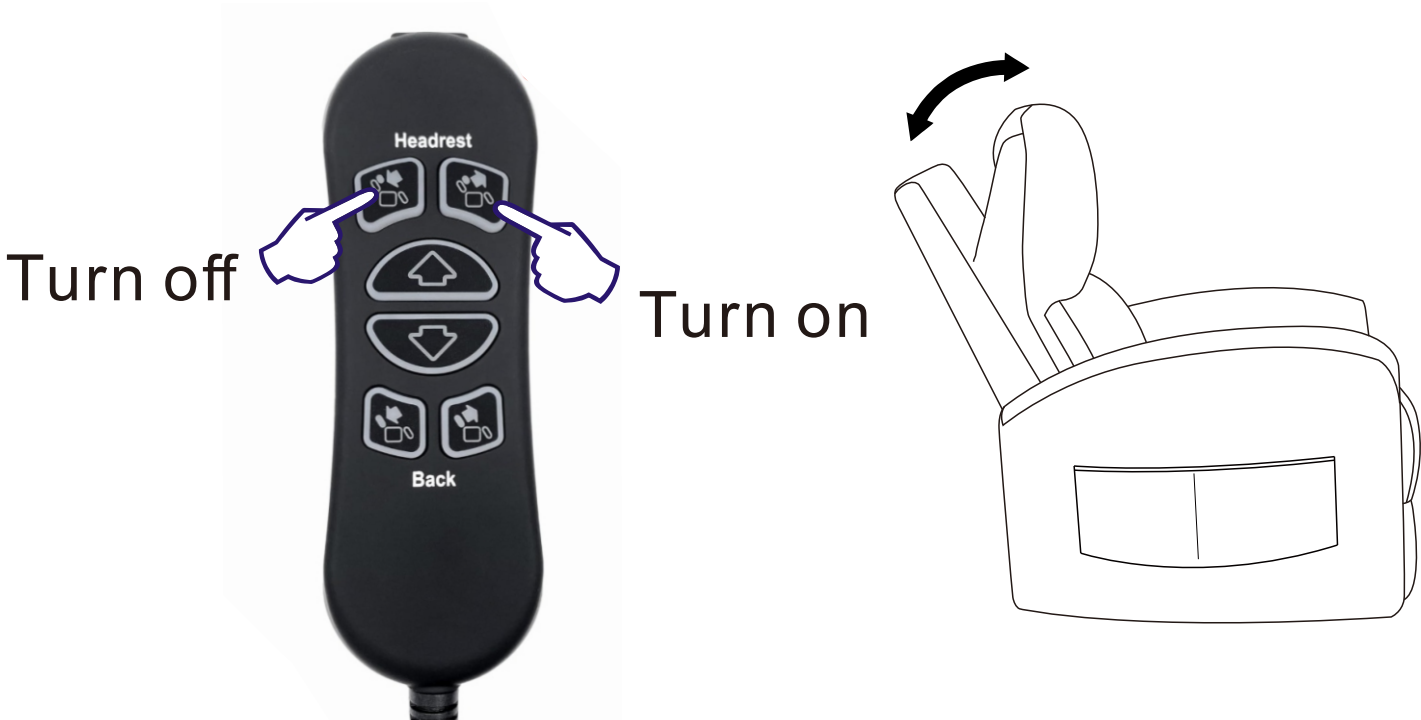
STEP 2: Please follow the steps to plug in the power
(How to connect a line)

Please connect the two wire bundles according to the color/text description.

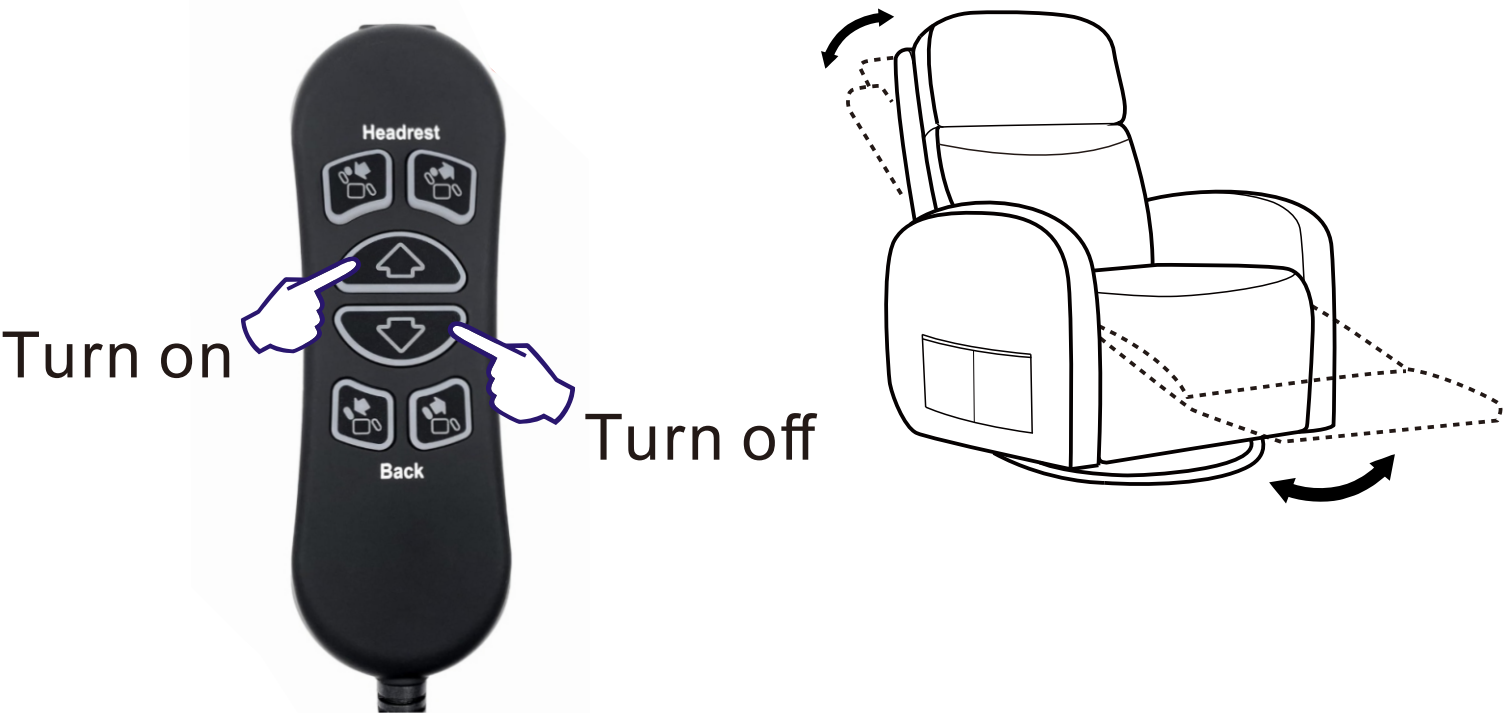


STEP 3: Remote control demonstration function

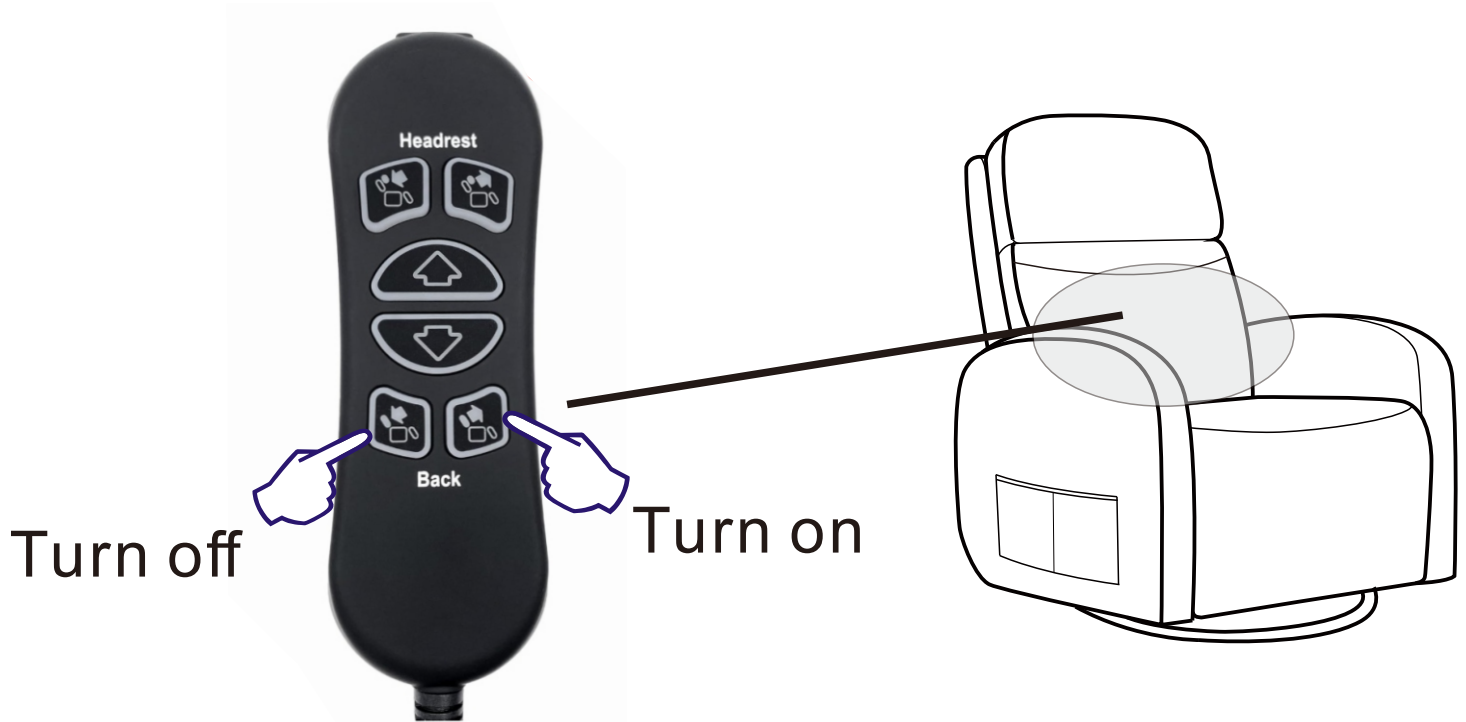
Turn on / turn off headrest function



Turn on / off the seat and back display



Turn on / turn off the waist support device



*Are you having difficulty
with assembly? Missing parts?*

Please contact us

*For return, please check the return policy with
the retailer or market place you bought from.*

*Appreciate your purchasing from us.
Pop up your life by our furniture piece!*
