

Motion Sensor Lights with 3 Adjustable Heads

Thank you for purchasing GRODIAL products. To ensure a better shopping experience, please follow the instructions for use step by step.

If you have any questions about our products, please contact our customer service, our after-sales team will contact you at the first time and resolve any problems about the products.

E-mail: serviceyrt@gmail.com

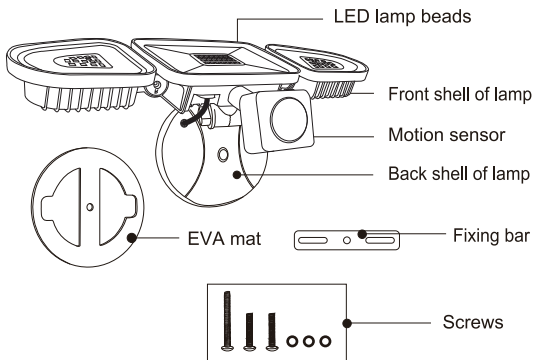
Warning

1. The LED module can't be replaced, you need to replace the entire lamp if it damaged or reach the service life.
2. If the wire is damaged, the lamp can no longer be used and needs to be scrapped.
3. If the casing breaks or water enters, the lamp can no longer be used and needs to be scrapped.
4. Do not stare at the LED light-emitting surface closely for a long time to prevent the hurt of the eye.
5. Under no circumstances should the luminaire be covered by a thermal pad or similar material.
6. The Lamp requires professional electrician to install.

1

7. The IP66 waterproof grade is just for rainproof, the lamp can not be immersed in water, otherwise it may cause leakage.

Component and Structure diagrams



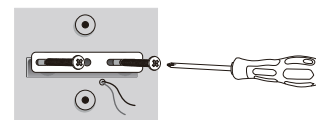
Parameter

Model	Power	Lumen	Lighting Range	Installation Height	CRI	Color temperature	Ip rating	Control method	Input voltage	Ta
									US	
TSFA0042	42W	3600	6-8M	4-6M	>80	2700K/5000K/6500K	IP66	Remote control	AC120V/60HZ	-25 C ~40 C
TSFA0070	70W	7800	7-9M	5-7M	>80	2700K/5000K/6500K	IP66	Remote control	AC120V/60Hz	-25 C ~40 C

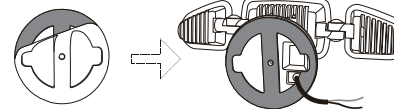
2

Installation Steps

1. Link the fixing bar to the junction box with two long screws.



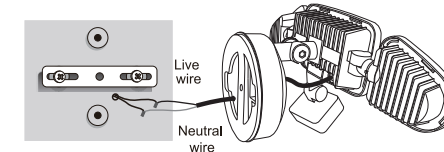
2. Remove the protective paper partition from the adhesive surface of the EVA seal, pull out the power cord through the opening of the EVA seal, and stick the EVA seal to the base of the lamp.



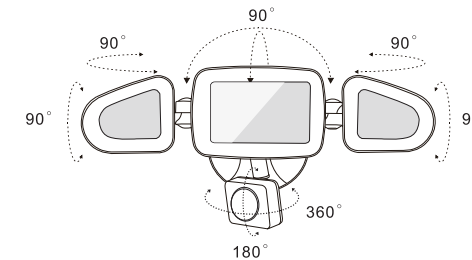
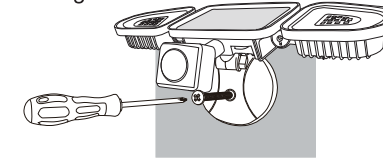
3. Connect the light to the wires of the junction box (black is live wire, white is neutral wire)

3

Warning: Please turn off the power before wiring.

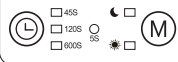


4. Use a long screw to pass through the hole in the center of the lamp connect to the center hole of the fixing bar.



4

Sensor



(L) Lighting Time Switch: Press the switch 5S-45S-120S-600S cycle.

* The indicator light will stay on when switch to corresponding mode.

(M) Working Mode Switch: Press the switch Sun-Moon cycle.

(☀) Day mode: Lights up during the day and night, 24 hours working.

(🌙) Night Mode: Only work at night.

* The indicator light will stay on when switch to corresponding mode.

Functions of the remote control



(ON/OFF) ON/OFF (Constant light switch button) When it is off, press the **(☀)** **(🌙)** **(📶)** key to switch the corresponding function

(☀) Brightness Adjustment- (100%-10%) stepless dimming

(🌙) Brightness Adjustment+ (10%-100%) stepless dimming

5

(🌙) Night Sensing Mode (switchable under any situation when powered on). Press this key, Light flash twice when the mode shifts successfully. Light stay on 5s.

(☀) 24 Hours Sensing Mode (switchable under any situation when powered on). Press this key, Light flash twice when the mode shifts successfully. Light stay on 5s.

(📶) Sensing Distance Adjustment - Decrease (Successful adjustment, the light flashes twice) 100% (12m) - 80% (9m) - 50% (6m) (Used in sensing mode only)

(📶) Sensing Distance Adjustment + Increase (Successful adjustment, the light flashes twice) 50% (6m) - 80% (9m) - 100% (12m) (used in sensing mode only)

(45S) Induction once, lights on for 45s, then lights off. Light flashes twice after successfully setting. (Used in sensing mode only)

(90S) Induction once, lights on for 90s, then lights off. Light flashes twice after successfully setting. (Used in sensing mode only)

(120S) Induction once, lights on for 120s, then lights off. Light flashes twice after successfully setting. (Used in sensing mode only)

(5min) Induction once, lights on for 5min, then lights off. Light flashes twice after successfully setting. (Used in sensing mode only)

(10min) Induction once, lights on for 10min, then lights off. Light flashes twice after successfully setting. (Used in sensing mode only)

6

(1H) Timing 1H setting successful, light flashes twice. Lights on for 1 hour, then switch to Night Sensing Mode with a lighting 45s at induction once.

(2H) Timing 2H setting successful, light flashes twice. Lights on for 2 hours, then switch to Night Sensing Mode with a lighting 45s at induction once.

(3H) Timing 3H setting successful, light flashes twice. Lights on for 3 hours, then switch to Night Sensing Mode with a lighting 45s at induction once.

Notice: When turn off by the remote control ON/OFF, there are 6 keys to **(ON/OFF)** **(☀)** **(🌙)** **(📶)** **(1H)** **(2H)** **(3H)** turn on the lamp. Memory Function: The lamp will remember the light working mode you set last time. When it comes back on, it will work on mode according to your previous set.

Remind

The detection distance depends on the ambient temperature. If the ambient temperature is close to or higher than the human body temperature, this sensing detection distance will be shorter. This means you need to get closer to this light. Conversely, if the ambient temperature is lower than the human body temperature, this sensing detection distance will be farther.

7

Routine Maintenance

1. To ensure the light working normally, please clean the lamps regularly.
2. Make sure the power is off before maintenance.
3. To avoid damage to the lamp, please do not clean it with chemicals.



Company name: Shenzhen Oumei ke Lighting Technology Co., Ltd.
Address: No. 19-20, Anye Road, Yuanshan Street, Longgang District, Shenzhen, Guangdong, China (+86 0755-28608199)

Contact: serviceyrt@gmail.com

8