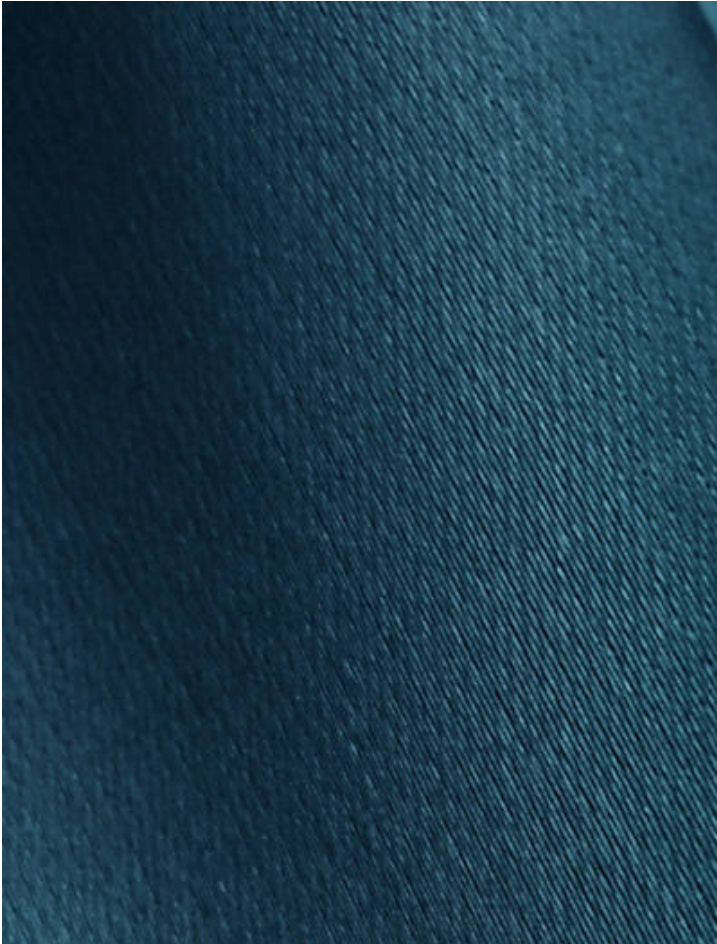


MIROIR M1

CANARD • H0 0001 0239

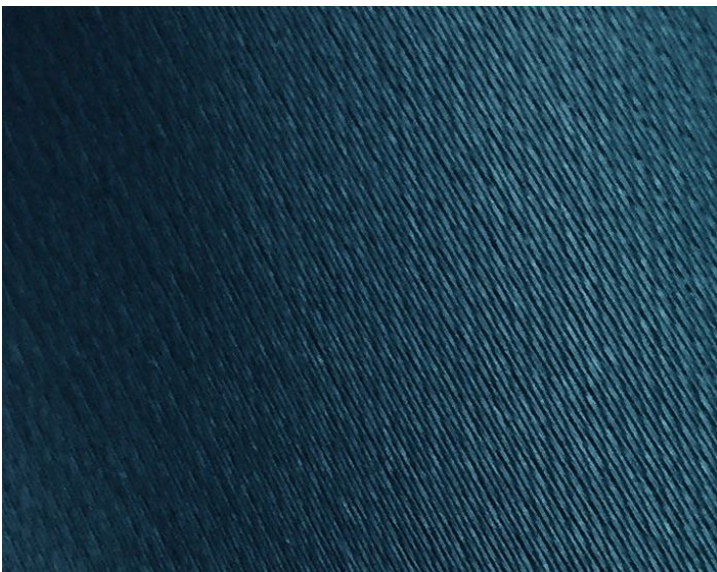
Plains / Textures from the Contract 13 Collection by Lelièvre



APPROX. MATERIAL 55" / 139.70 cm
WIDTH
APPROX. REPEAT . . . HORIZONTAL 0" / 0 cm
VERTICAL 0" / 0 cm
CONTENT 100% POLYESTER TREVIRA CS
SUGGESTED USE . . . MEDIUM DUTY MULTIPURPOSE
PERFORMANCE / . . . FLAME RETARDANT (FR)
CONTRACT IMO CERTIFIED
ABRASION 19,000 MARTINDALE
FIRECODE EU M1
MADE IN FRANCE
STOCKED IN. SUPPLIERS WAREHOUSE EUROPE
DESIGN PLAIN / SOLID
SCALE PLAIN / SOLID

DESIGN INSPIRATION

Miroir is a polyester Trevira CS piece dyed satin. Created in a large range of elegant colors both subtle and rich it has an ideal drape for sophisticated curtains, subtlety and femininity for bed throws and cushions and has a high enough martindale test for decorative upholstery. It meets M1 fire regulations for contract use.



DETAIL IMAGE