

SPECIAL FEATURE			
Product name	Chandelier		
Rated voltage	100V~120V.60Hz	Material	Aluminum+K9 Crystal
Lamp holde	G9	Style	Modern



Flat Ceiling



Slanted Ceiling



1. Fix the m4 bolt on the hanging plate
2. Fix the hanging board to the ceiling
3. Fix the ceiling tray on the hanging plate



**3 years warranty**  
If the goods have transportation and quality problems, free returns and exchanges.

If you have any questions, welcome to contact us by email, we will serve you wholeheartedly.



### INSTALLATION STEPS



1. Take the chandelier lamp body out of the package.



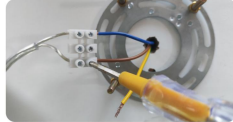
2. Adjusting Branches, with video on adjusting branches attached.



3. What the branch looks like when fully expanded.



4. Attach the bracket to the ceiling with expansion bolts.



5. The wire links do not distinguish between "L" and "N" wires



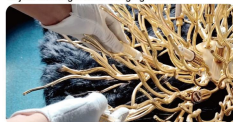
6. Install the ceiling tray



7. Press and hold the button on the ceiling tray to adjust the length of the hanging chains



8. Adjust and fix the length of the wire.



9. Install the G9 bulb



10. Hanging the Crystal Pendants.

### FAQS

**Q1: Why is the size of the chandelier smaller than the actual size when I open the package?**

The chandelier bracket is made of aluminum, very soft and can be adjusted flexibly. The untermiated end of the bracket is sharp and can easily puncture the packaging during transportation, so we extend the untermiated end of the branch inwards.



**Q2: If crystal pendant is damaged during transportation or installation, what should I do?**

Please don't worry, contact us immediately and we will send you new replacement pendants free of charge.



**Q3: If you have any questions about the product, please contact us in the store, or contact us by e-mail, note your order number in the mailbox, we will give you a good solution and professional answer within 24 hours.**