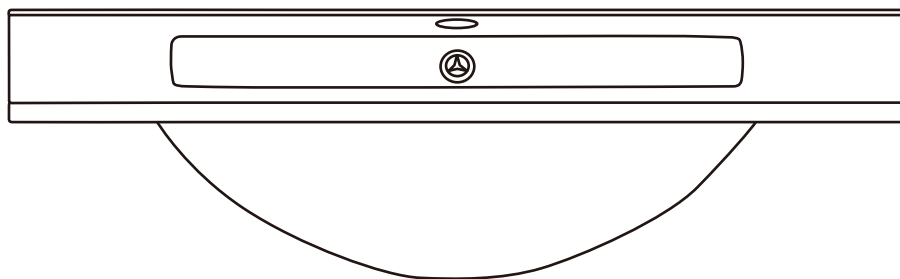
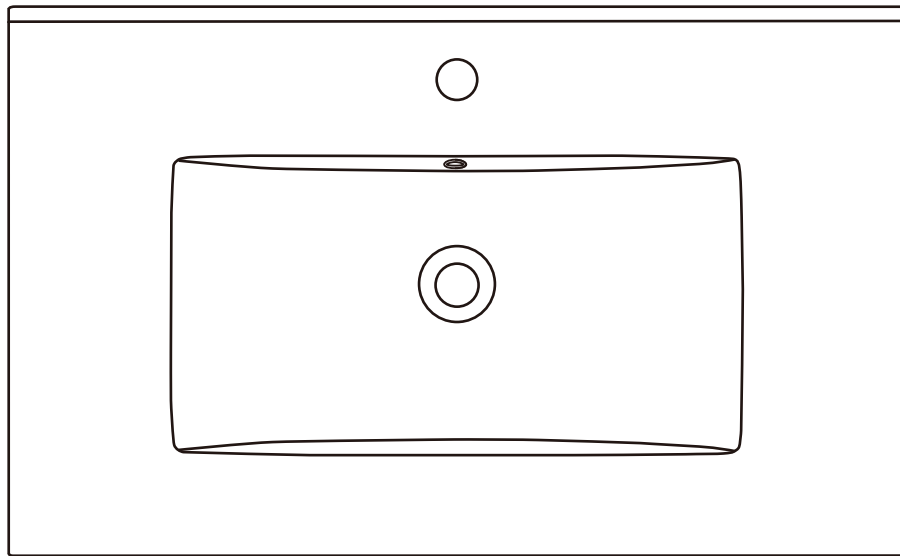


INSTALLATION INSTRUCTION

Vanity Top Bathroom Sink





Read the following instructions carefully before you begin this installation:

- Due to the handmade construction, dimensions of the actual product might vary by up to 1/4 inch from the nominal specifications. Please refer to the actual product received prior to installation.
- Observe all local plumbing and building codes.
- Make sure the floor is level to avoid any tilting of the vanity.
- Shut off the hot and cold water supplies.
- Make sure the plumbing under the sink is in good condition and that there are no cracks or other problems that could cause issues during installation.
- Unpack the new sink and inspect it for damage. Afterward, return the sink to its protective carton until the installation begins.

General Recommendations:

Please read installation instructions thoroughly before installing the vessel sink.

Be sure to use proper tools and always wear proper personal safety accessories for your protection.

**If you have any questions or concerns
please contact us:**

servicefast1@outlook.com

INSTALLATION INSTRUCTIONS

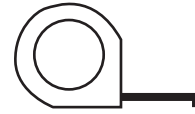
(1) SUGGESTED TOOLS AND MATERIALS



Safety Glasses



Marker



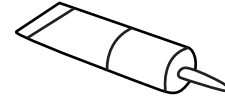
Tape Measure



Drill



Level



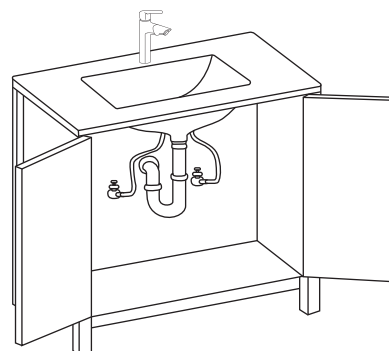
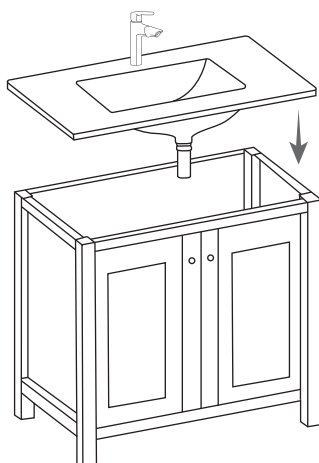
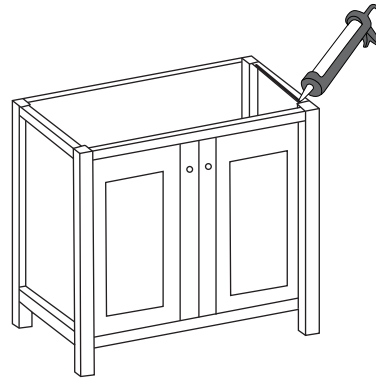
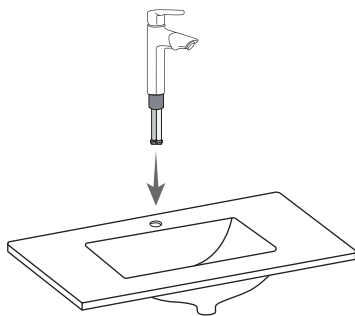
Thread Sealant

WARNING:

To reduce the risk of injury or property damage, read and follow all of the installation instructions before installing this product and wear safety goggles. This product must be installed in accordance with all state and local plumbing and building codes. Call a professional if you are uncertain about installing this product properly.

(2) INSTALLATION STEPS

Apply stain free silicone or latex adhesive (not included) to the edge of vanity. With the help of another abuit, gently lower top onto the vanity. Wipe away any excess adhesive with a soft cloth and wait approximately 24 hours for it to dry.



(3) CARE ANND CLEANING

Do's



- ✓ **Cleaning the sink regularly:** Use a mild detergent or cleaning solution and a soft cloth or sponge to wipe down the sink. Avoid using abrasive cleaners or scrubbers as they can scratch the surface of the sink.
- ✓ **Remove stains promptly:** If you notice any stains on the sink, it's important to remove them promptly. Use a cleaning solution specifically designed to remove the type of stain you're dealing with. For example, use a rust remover for rust stains and a hard water stain remover for hard water stains.
- ✓ **Keep the sink dry:** After using the sink, make sure to wipe it dry with a clean towel or cloth. Standing water can cause water spots and mineral buildup, which can be difficult to remove.
- ✓ **Use a drain strainer:** Use a drain strainer to prevent hair, soap, and other debris from clogging the drain. A clogged drain can lead to water damage and other problems.

Don'ts



- ✗ **Avoid using harsh chemicals:** Harsh chemicals such as bleach, ammonia, or acid-based cleaners can damage the surface of the sink. Avoid using these chemicals and opt for a mild cleaning solution instead.
- ✗ **Avoid placing heavy objects on the sink:** Vitreous china is a durable material, but it can still crack or chip if heavy objects are placed on it. Avoid placing heavy objects on the sink and use a separate surface for storing items such as hair dryers or curling irons.
- ✗ **Avoid hitting it with hard objects or dropping heavy items on it.**
- ✗ **Avoid direct contact with sharp and metallic objects.**



Soft Cloth



Mild Detergent



Plastic Scraper

By following these tips, you can keep your vitreous china bathroom sink in great condition for many years to come. Regular maintenance and care will help to prevent damage and keep the sink looking its best.