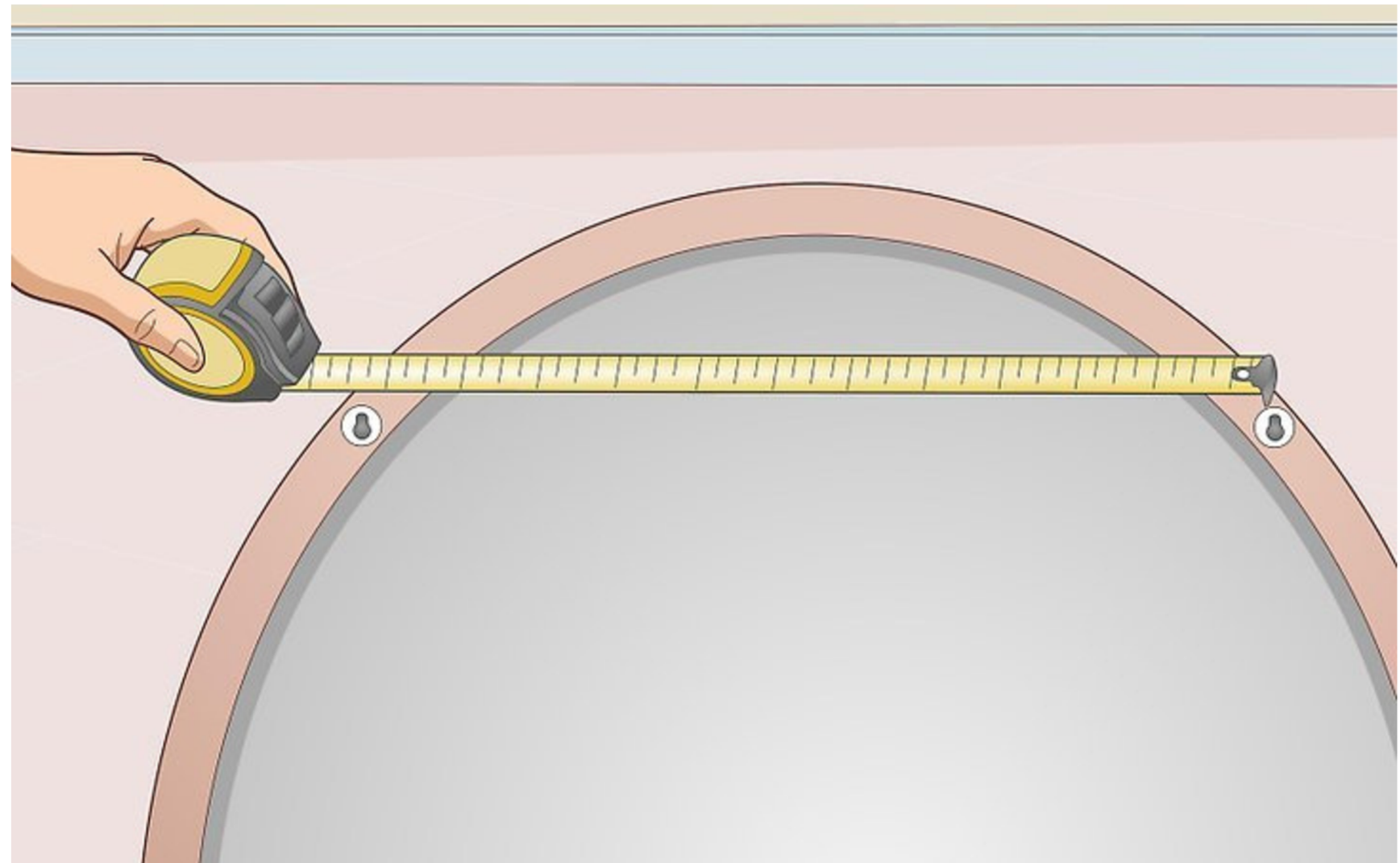


**NOTICE: HARDWARE AND
TOOLS ARE NOT INCLUDED**

Instructions

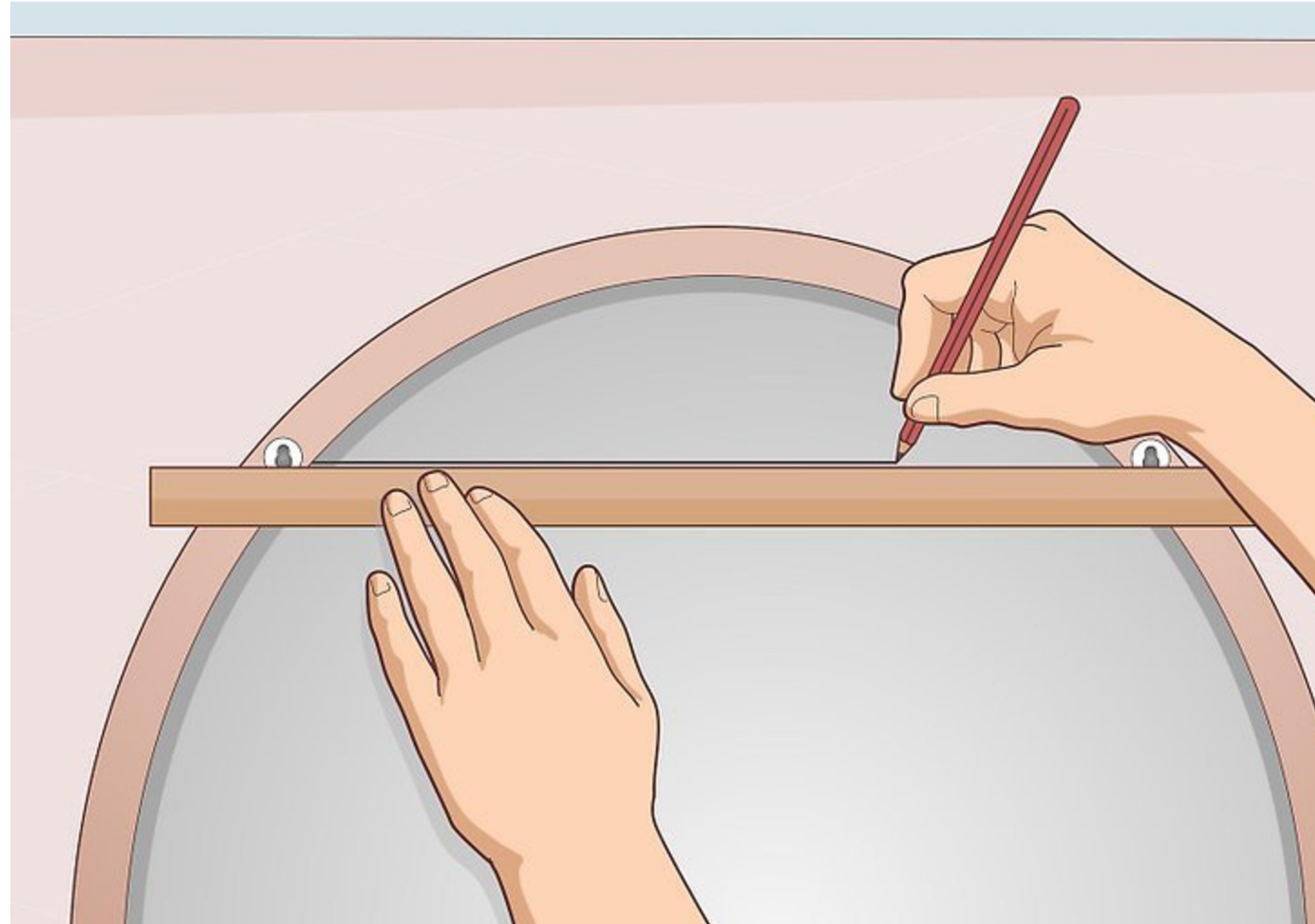
1

Measure the distance between the slots on the back of the mirror. Write the distance down because you'll need it later on to install the mounting screws.



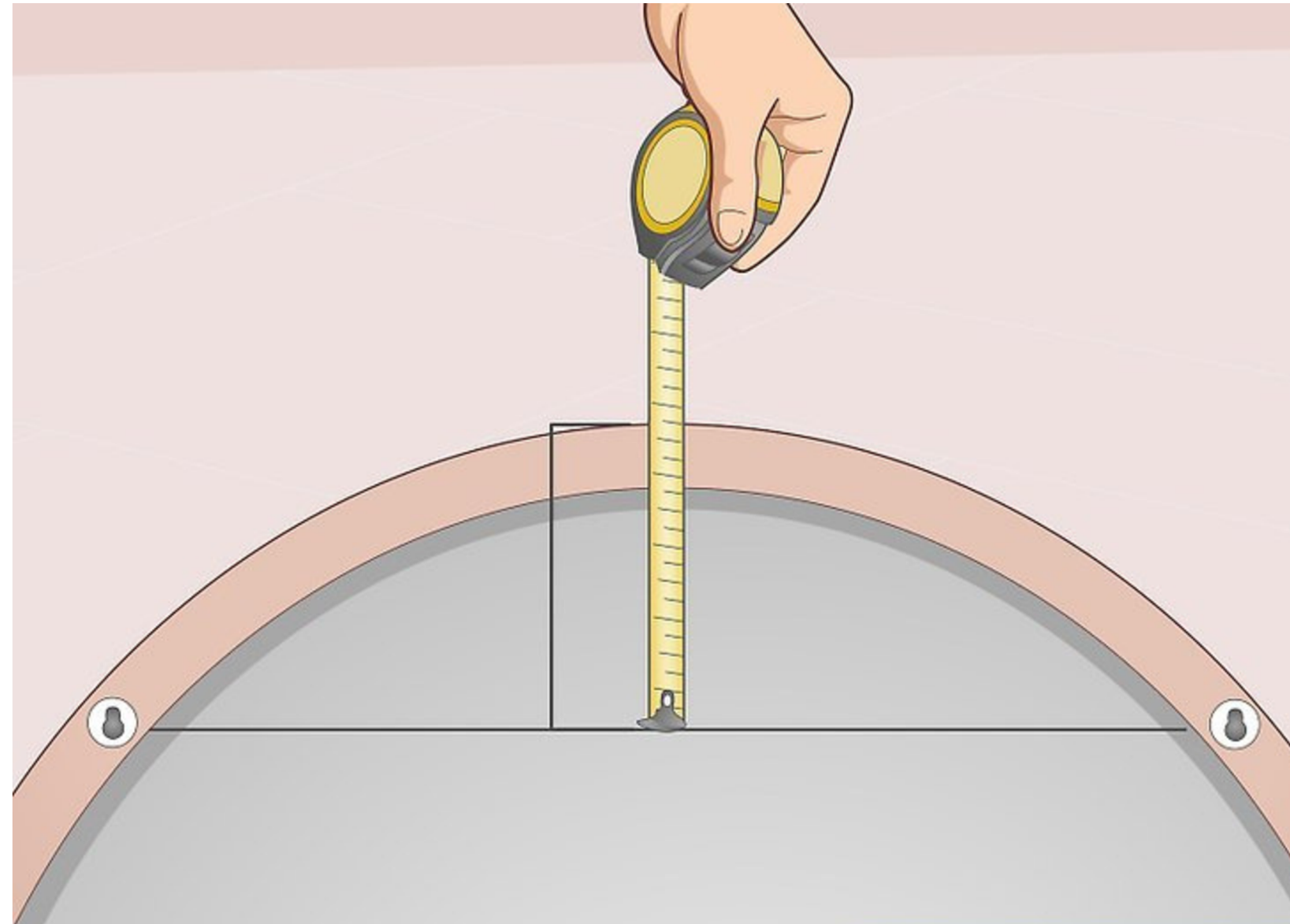
2

Draw a line connecting the 2 slots. Use a straightedge to make the line as straight as possible.



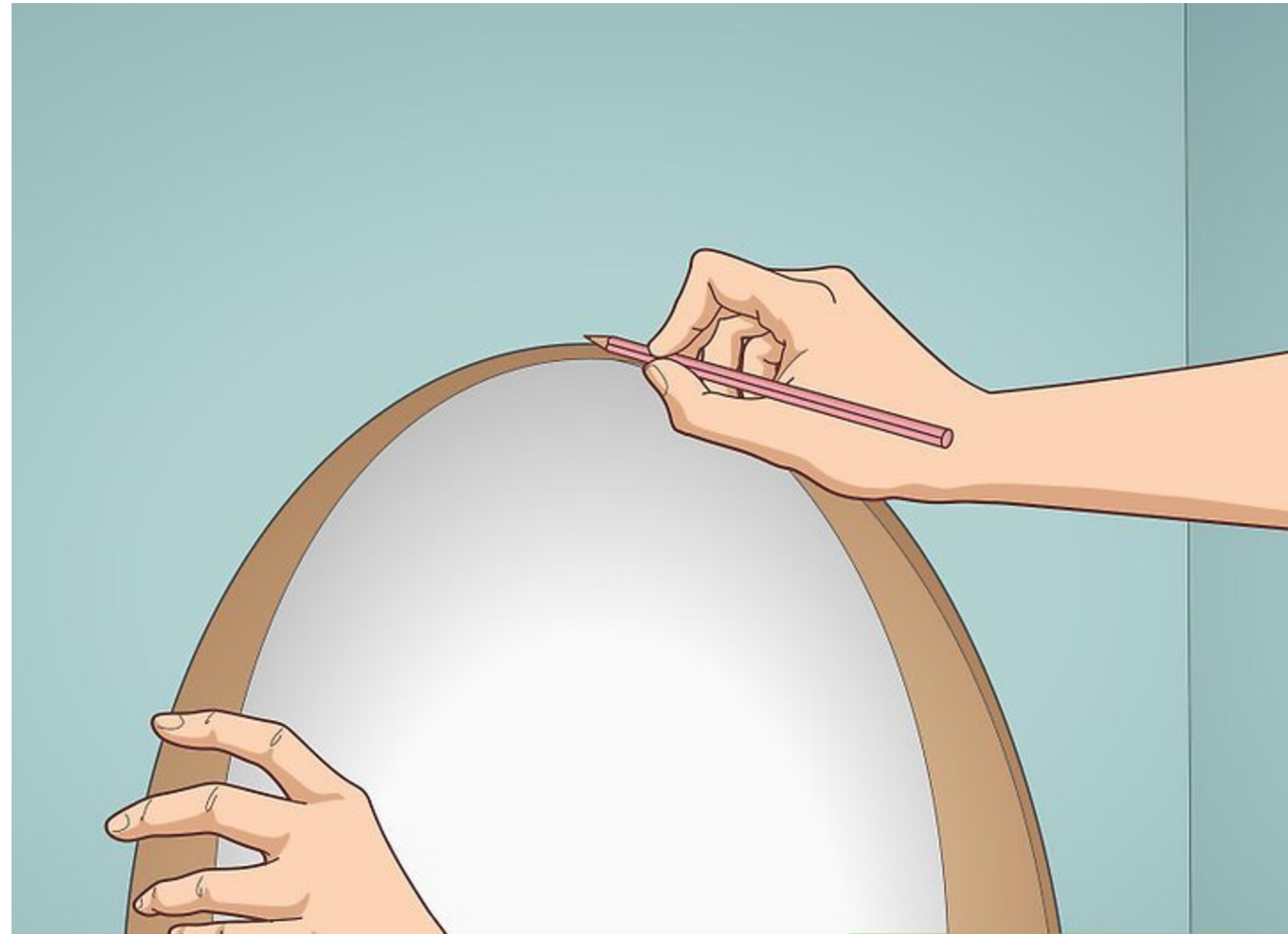
3

Measure the distance from the middle of the line to the top of the mirror. Find the midpoint of the line you drew. Then, measure up from there to the very top edge of the mirror. Make a dot at that midpoint on the top of the mirror



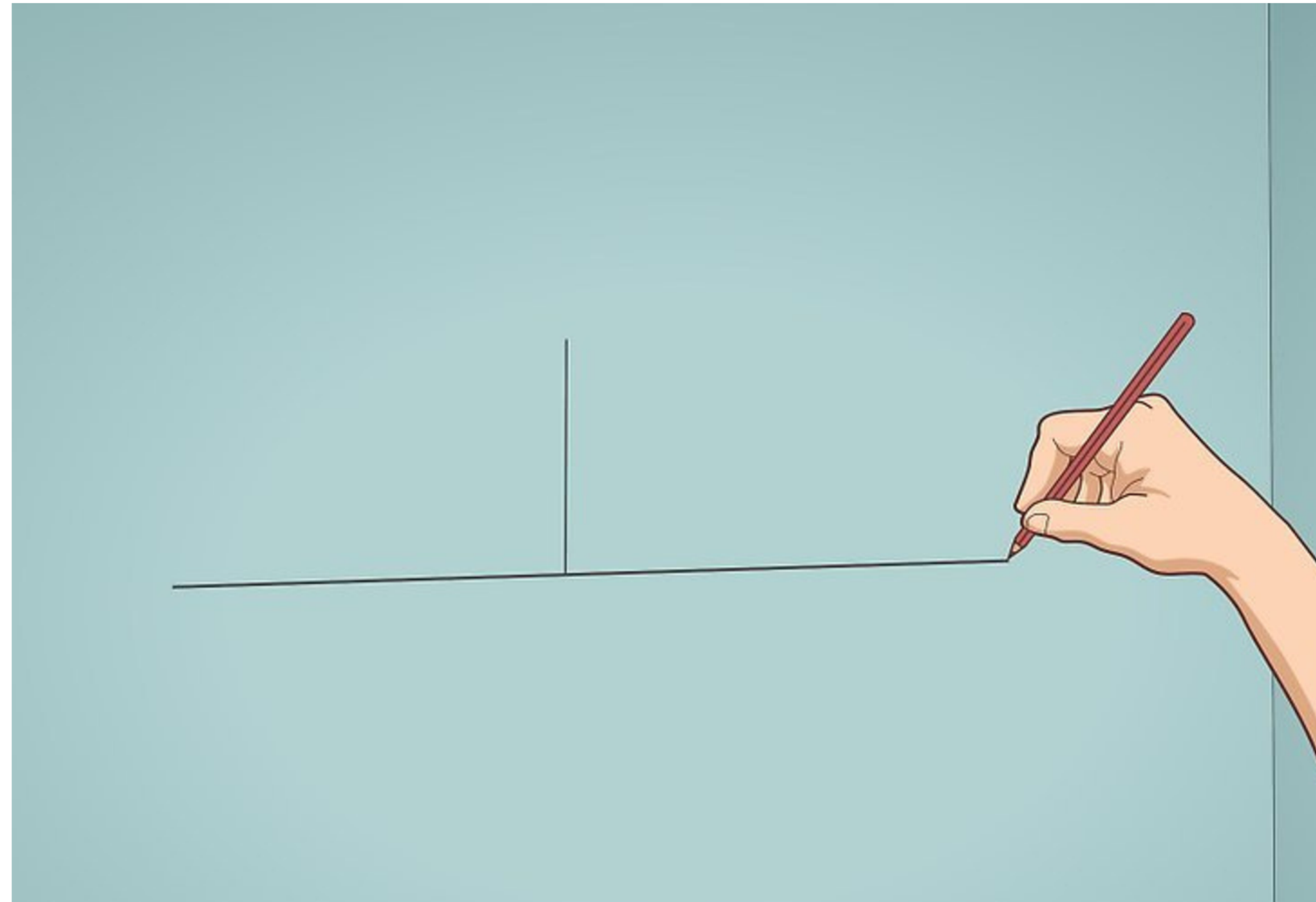
4

Mark the point on the wall that you want the mirror top to reach.



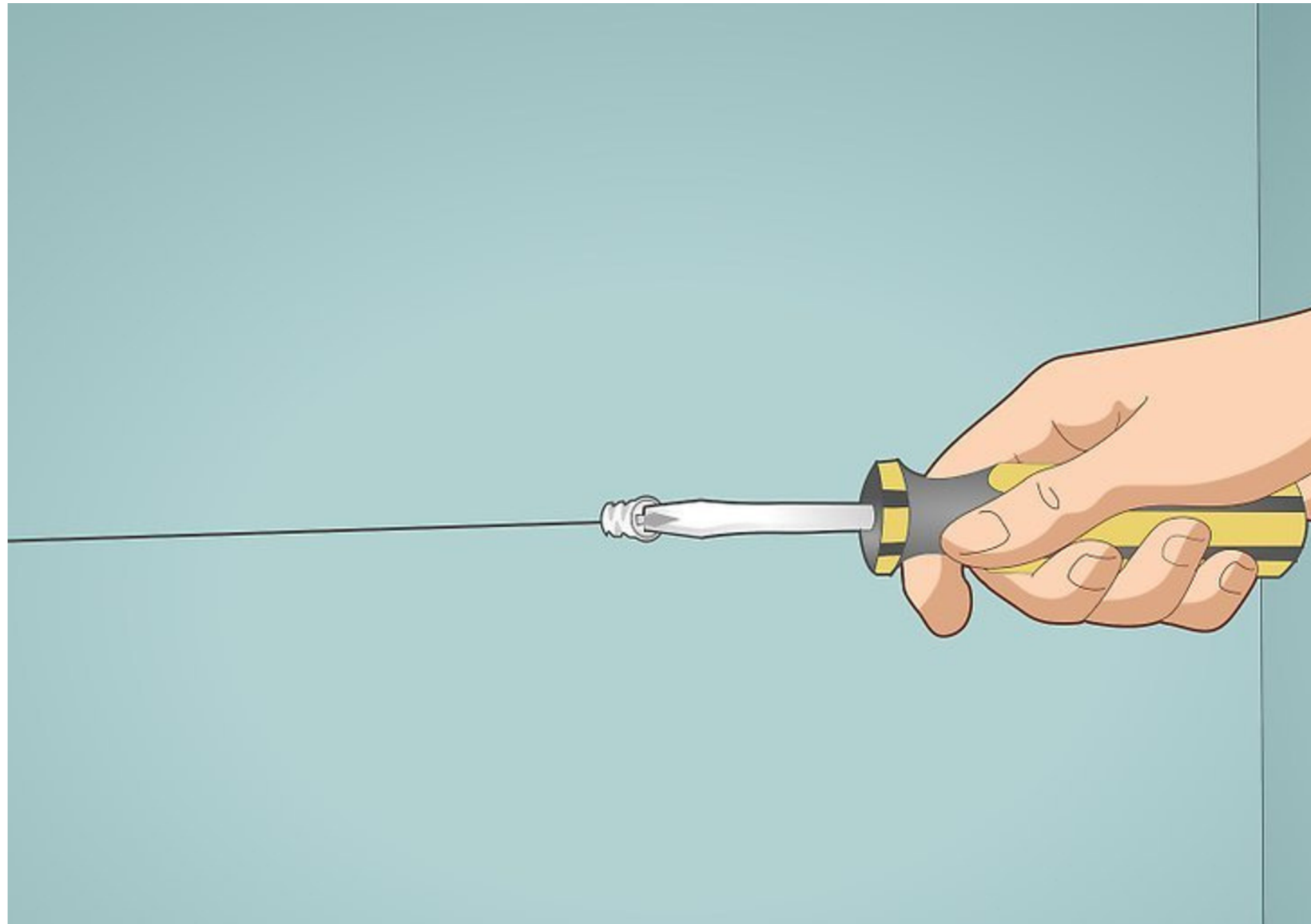
5

Draw a line on the wall that matches the one on the mirror. Start by measuring down the same distance from the top of the mirror to the line on the back of it. From that point, draw a straight line half as long as the line connecting the slots in each direction. Make dots at each end of the line.



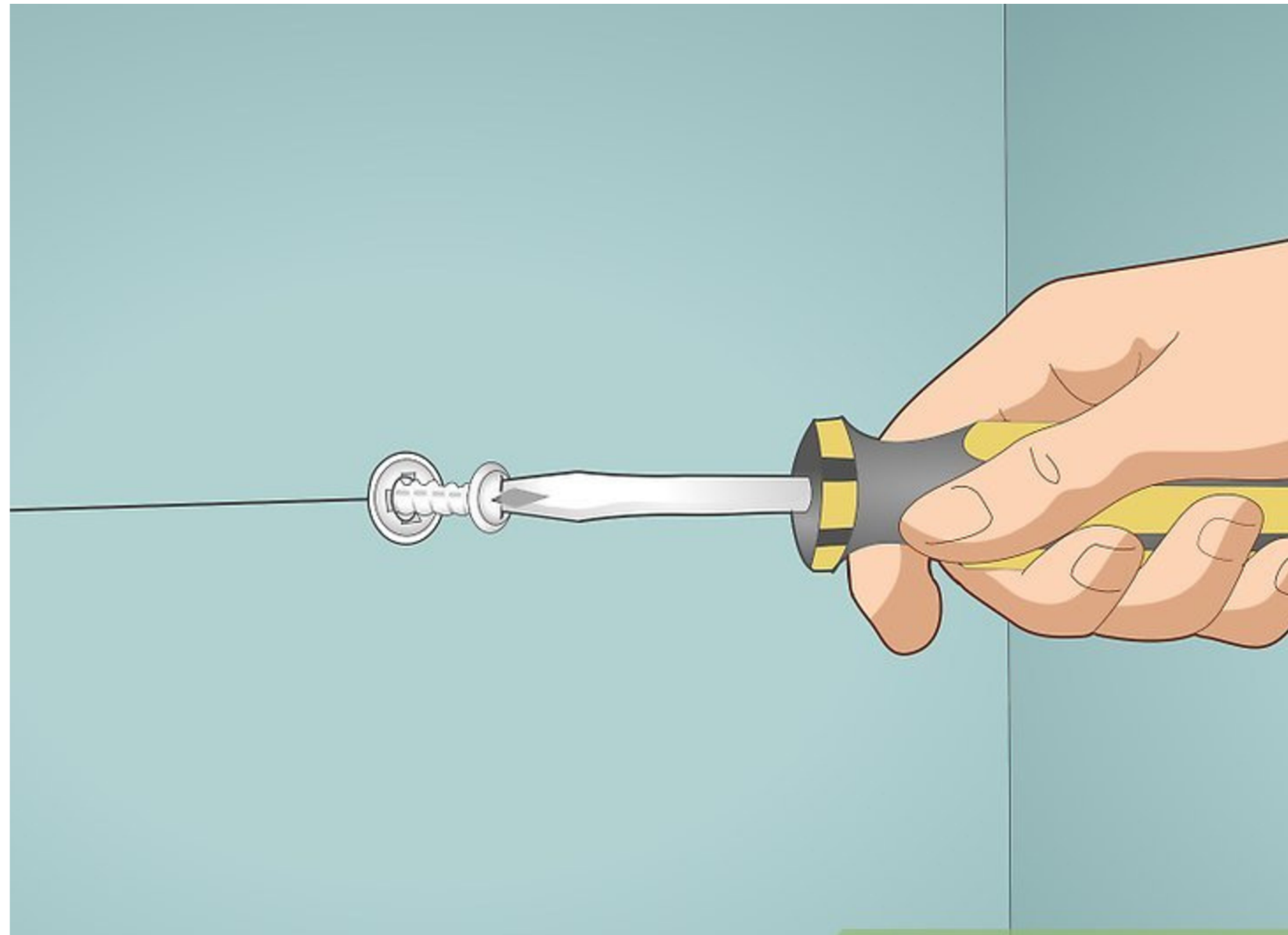
6

Screw in the anchors at each end of the line.



7

Insert screws through the anchors. Leave enough space for the mirror to hook over the screws.



8

Mount the mirror onto the screws. Lift the mirror up and work each slot over the screws one at a time. Hook the mirror over one screw, then lean the mirror to the other side to find the other. Once both mounts are secure, the mirror is successfully up.

