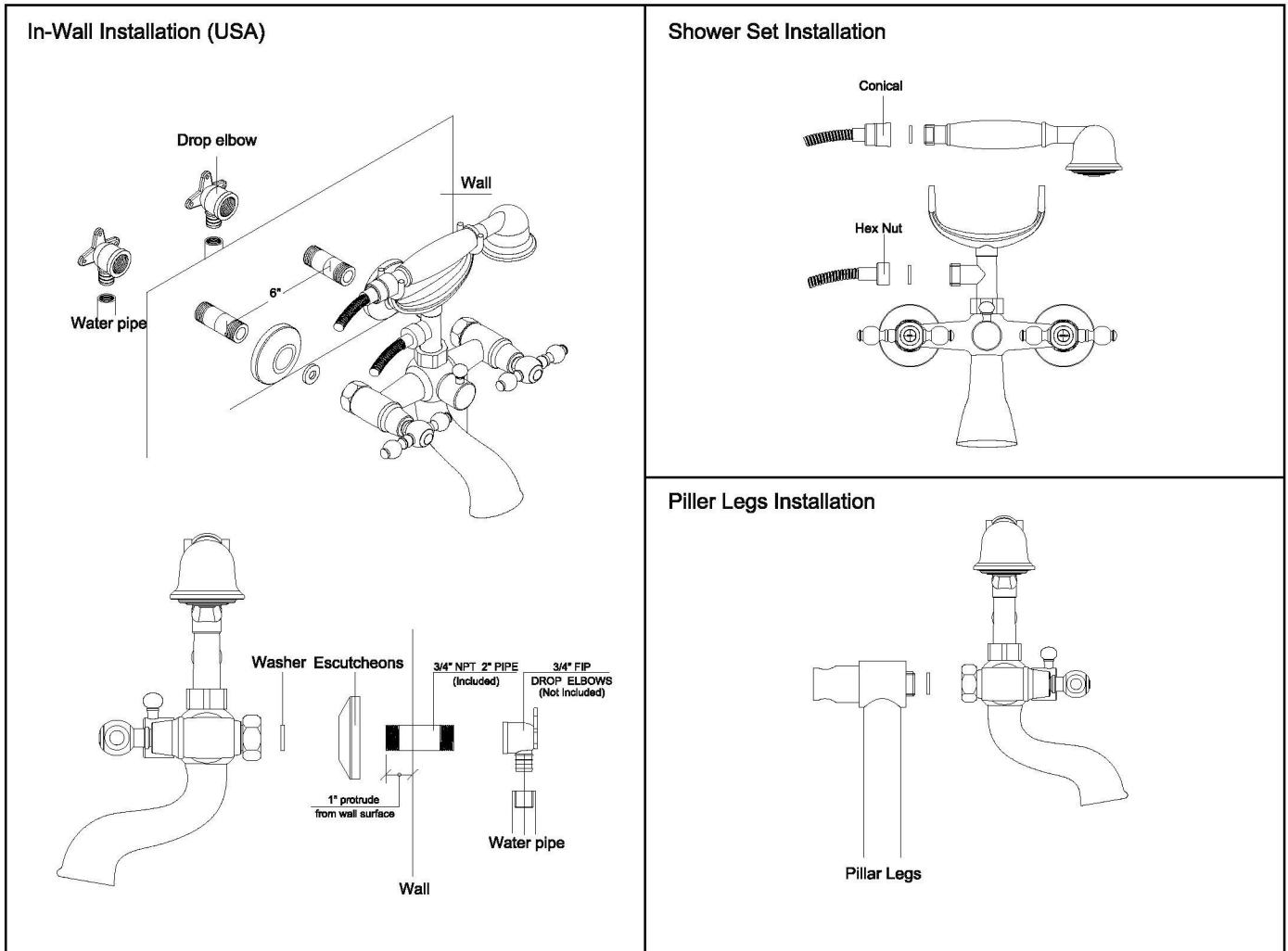


Tub & Shower Mixer with Massage Hand Held Shower Set



In-Wall Installation (USA):

1. Plumb Hot and Cold $\frac{3}{4}$ " NPT 2" PIPES (Included) to protrude 1" from FINISHED wall surface, 6" APART.
(NOTE: The $\frac{3}{4}$ " NPT 2" PIPES Should be installed to $\frac{3}{4}$ " FIP Brass Drop Elbows).
2. Slip Escutcheons over $\frac{3}{4}$ " NPT 2" PIPE before attaching MIXER.
3. washers are inserted into Mixer fitting BEFORE attaching to Pipes. As the Pipes are NPT (Tapered) the installation should be water tight. Use included Telfon Tap if any leaks detected.
4. Adjust Escutcheons as required.
5. Discard the S-Pipes as these are for European Installation ONLY (1/2" IPS).
6. Insert Washers into BOTH Shower Hose Fittings.
7. Attach Hand Shower to Conical End of Shower Hose.
8. Attach Shower Hose Hex Nut to Mixer Fitting.

Pillar Legs Installation:

1. Make sure Pillar Legs are exactly 6" apart (center fittings).
2. Attach Teflon Tape to Pillar Legs $\frac{3}{4}$ " fittings.
3. Attach and Tighten Mixer's $\frac{3}{4}$ " Female fittings to $\frac{3}{4}$ " Pillar Leg Male fittings. Make sure washers are inserted into Mixer fittings BEFORE attaching to Pillar Legs.
4. Discard Escutcheons, S-Pipes, and $\frac{3}{4}$ " NPT 2" Pipes as these are not required for Pillar Legs.
5. Insert Washers into BOTH Shower Hose Fittings.
6. Attach Hand Shower to Conical End of Shower Hose.
7. Attach Shower Hose Hex Nut to end of Mixer.