



CLOSET

Installation Instructions

TABLE OF CONTENTS

Installation Preparation/Assembly Parts	Pg 02
Closet Unit Installation Intro.	Pg 03
Fixed Shelf Placement.	Pg 04
Drawer Slide Installation and Placement	Pg 05 -06
Unit Installation	Pg 07
Building your Drawer.	Pg 08-12
Hang Rod Installation and	Pg 13
Adjustable Shelf Installation	
L-Bracket.	Pg 14
Toe Kick Installation	Pg 14

INSTALLATION PREPARATION

Tools Needed:

- Tape Measure
- Screw Driver (#2 Phillips Drill Bit)
- #2 Square Bit
- Drill (#2 Phillips Drill Bit)
- Level
- Rubber Mallet



Prepare Your Space:

Take an inventory of necessary parts. Prior to installation, remove baseboard.



ASSEMBLY PARTS

8mm Flat Rafix Bolt

Connects fixed shelves to panel.



#6 5/8" Wood Screw

Mends plates to connect the connector panels, install L-Brackets to panels, and used for back holds on drawer slides in place of Euro Screws.



5mm x 10.5mm Euro Screw

Attaches drawer slides to panel.



Front Safety Shelf Pin

For adjustable closet shelves.



Back Safety Shelf Pin

For adjustable closet shelves.



L-Bracket

Attaches unit to wall. Install above the top, fixed shelf. However, do not flush it with the wall. Leave about a 1/4" space so the unit will be flush when the screws are tightened. ****See page 09



Mending Plate

Connects connector panels.



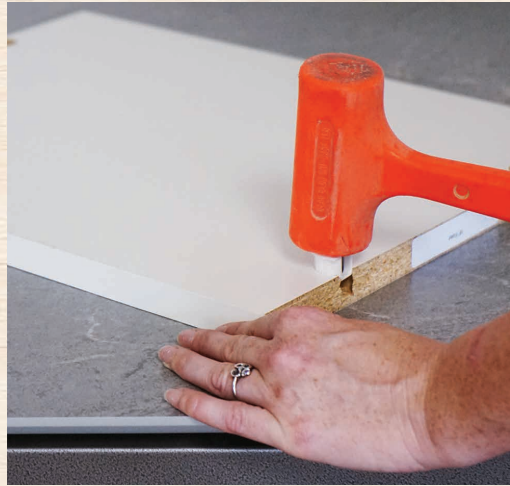
Rod and Brackets

Oval Closet Rod
Matte Nickel





CLOSET UNIT INSTALLATION INTRO



1. Add Rafx cups to fixed shelves. (pre-installed)



2. Add Rafx bolts where fixed shelves are installed. (See page 5)



3. Tighten Rafx cups with a #2 Phillips screwdriver.

Understanding Units

Your closet consists of upright partitions and fixed shelves. A “unit” is a section between any pair (left and right) partition. Assemble one unit at a time in segment from one side to the other after installing all Rafx cups and Rafx Bolts where necessary.

Profession Tips:

Two people are required to install all closet systems. Partitions should be held by one person while the other person fastens the fixed shelves. Unit will be unstable until all fixed shelves are securely fastened and the unit is secured to the wall. Unit can collapse during installation if not held in place.

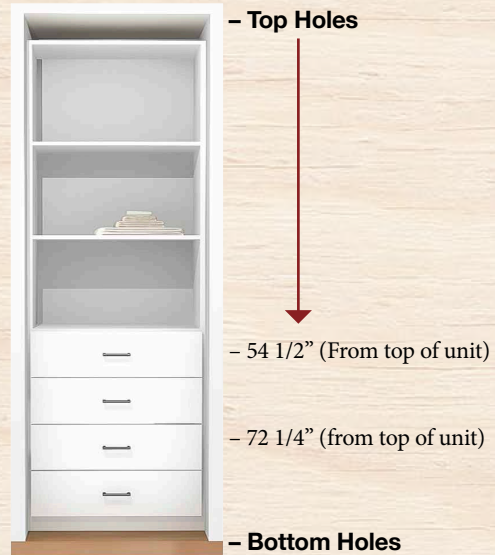
Installer may need to use a small rubber mallet to lightly tap shelves into place.

Do not over tighten rafx bolts during installation as this may cause damage to the panels.

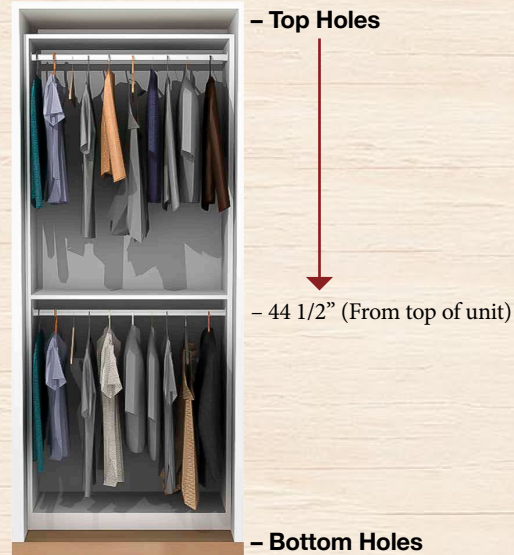
Fixed Shelf Placement

Place Rafx Bolts in holes per unit diagrams below.

Drawers & Shelving



Double Hung



Drawers & Rod



Long Hanging



Shelving





DRAWER SLIDE INSTALLATION

Step 1. Each drawer slide set is made of two pieces and each set can be used interchangeably.



Step 2. Take one set and fully extend the inner rail.



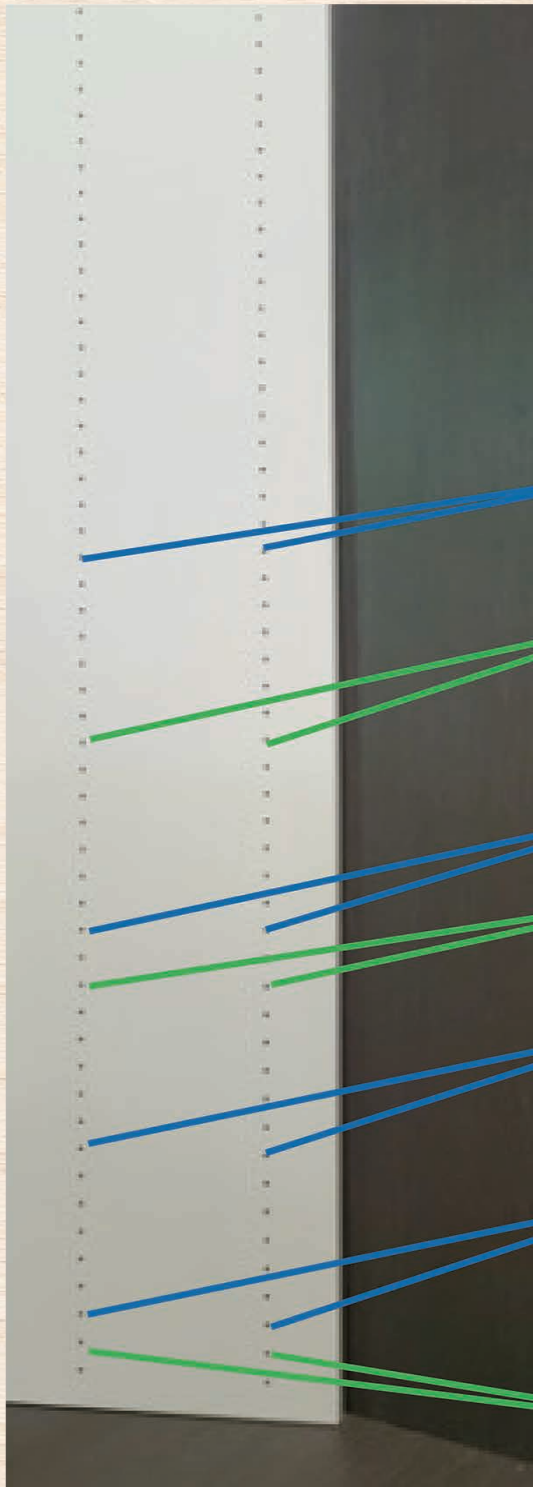
Step 3. Locate the black tab and adjust with your thumb.



Step 4. Fully extend the black tab while simultaneously pulling apart.



Step 5. Now that your two pieces are separated you are ready to install.



PLACEMENT OF DRAWER SLIDES

Step 1. Start from the bottom hole on the partition. Insert two Rafix bolts for the placement of the bottom fixed shelf.

Step 2. The first drawer slide will be installed at the 2nd hole from bottom. 88 5/8" from the top of the panel.

Step 3. The second drawer slide will be installed at the 9th hole from bottom. 79 3/4" from the top of the panel.

Step 4. Install the Rafix bolts at the 15th hole from the bottom for the fixed shelf. 72 1/4" from the top of the panel.

Step 5. The third drawer slide will be installed at the 16th hole from the bottom hole. 71" from the top of the panel.

Step 6. The fourth drawer slide will be installed at the 23rd hole from the bottom hole. 62 1/8" from the top of the panel.

Step 7. Install the Rafix bolts at the 29th hole from the bottom for the fixed shelf. 54 1/2" from the top of the panel.

Rafix Bolt 54 1/2"

Drawer Slide 62 1/8"

Drawer Slide 71"

Rafix Bolt 72 1/4"

Drawer Slide 79 3/4"

Drawer Slide 88 5/8"

Rafix Bolt Bottom Holes

UNIT INSTALLATION STEPS

Step 1. Begin assembly with the partition that is going up against the wall. Lean partition up against the wall with finished edge facing you.

Step 2. Place the additional partitions that make up the rest of the unit against the wall with holes facing you.

Step 3. After all your partitions are set in place, go back to the beginning partition, install the top fixed shelf, and lock your rafix cups into the top rafix bolts with a screwdriver to hold both partitions in place.

Step 4. Install your middle fixed shelf and lock rafix cups into rafix bolts with a screwdriver to lock both partition in place.

Step 5. Tighten bottom fix shelf back rafix first. Then fold down and tighten the front rafix with a short screw driver or ratchet with #2 drill bit to lock the unit in place.

Step 6. You will repeat steps 1-5 with each additional partition and other units until you have all your partitions in place.

Step 7. Fasten unit to the wall using L-Brackets.
(See page 15)



Step 1.



Step 3.



Step 3.

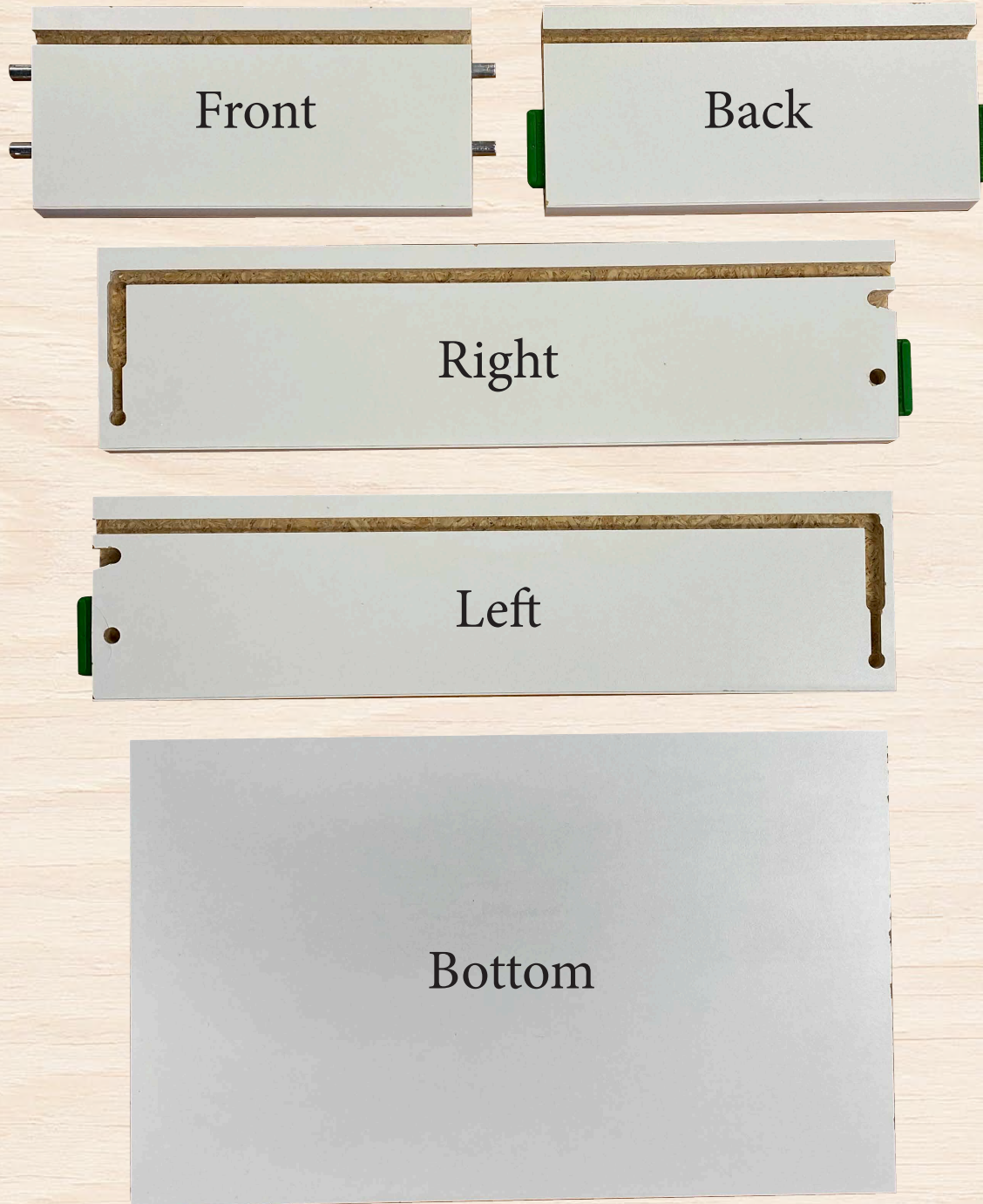



Step 5.



Step 6.

BUILDING YOUR DRAWER





Back

This diagram shows a white rectangular piece labeled 'Back' being inserted into a slot in a larger white piece labeled 'Left'. The 'Left' piece is oriented vertically and has a horizontal slot at its top. A green-handled screwdriver is shown inserted into this slot. The entire assembly is placed on a light-colored wooden surface.

Step 1:

Insert back piece
into left side, do
not lock.

Left



Back

This diagram shows the assembly from Step 1 with the 'Back' piece inserted into the 'Left' piece. A second white rectangular piece, labeled 'Right', is being placed on top of the 'Back' piece. The 'Left' piece is still oriented vertically. The assembly is on a light-colored wooden surface.

Left

Right

Step 2:

Insert right side
onto the back.



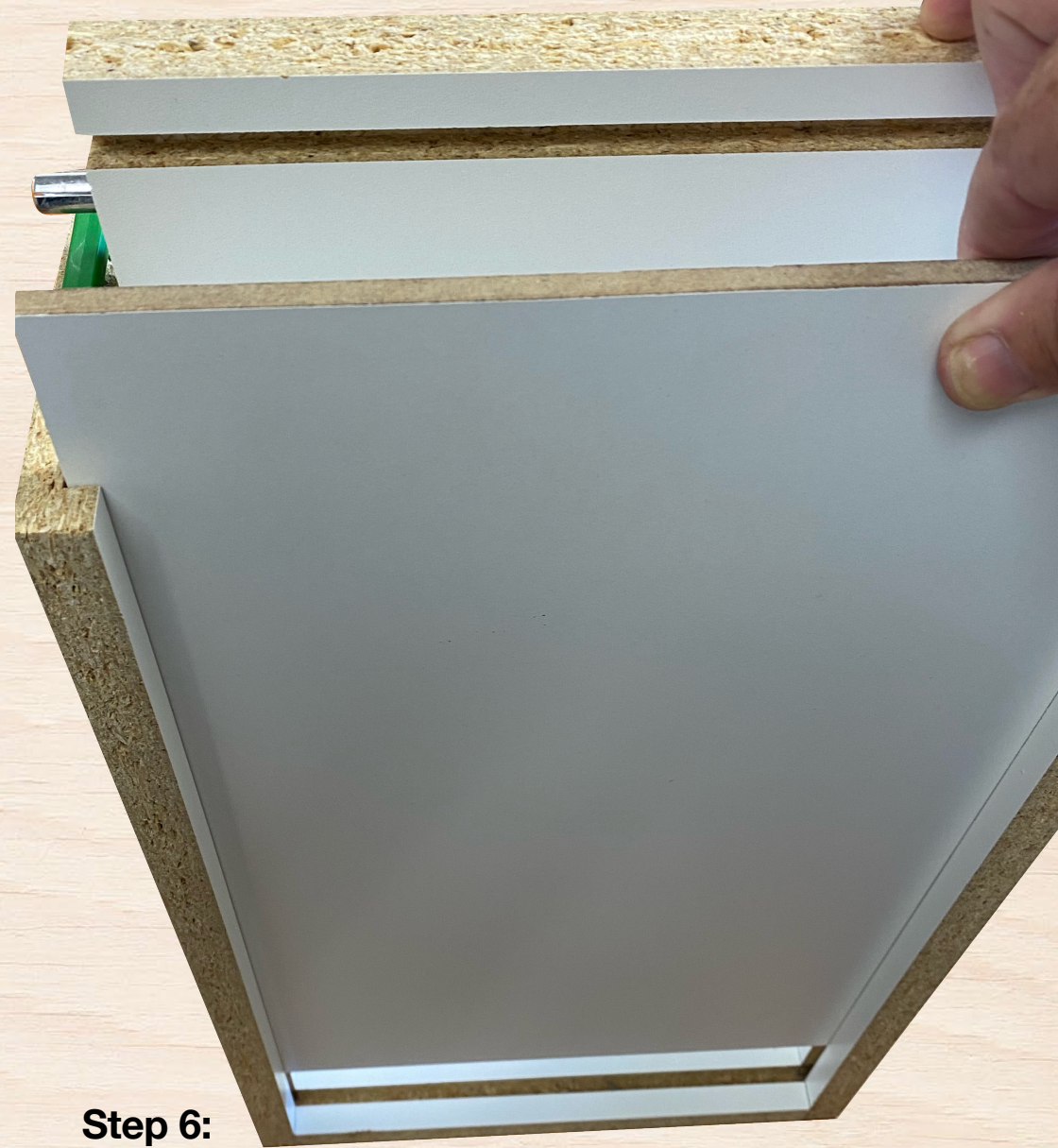
Step 3:

Push down back to lock in place.

Step 4:

Insert front of drawer with the top pins into the left and right sides.





Step 7:

Rotate the front to lock the bottom into place.



Fully assembled Drawer.

Step 8:

Install the drawer front onto dowels, push down to lock in place.

Step 9:

Install the hardware.

HANG ROD INSTALLATION



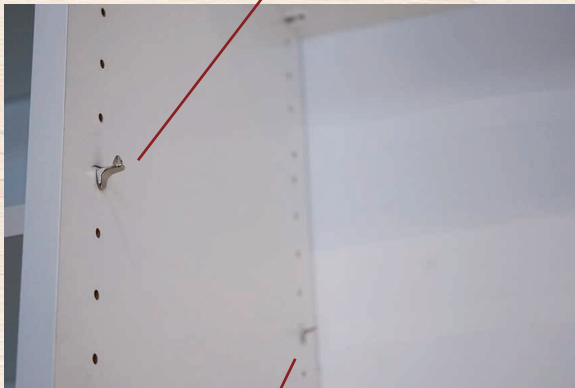
1. Install the rod bracket starting at the second hole below the fixed shelf.



2. Insert the rod in between both pairs of rod brackets.

ADJUSTABLE SHELF INSTALLATION

Front adjustable pin

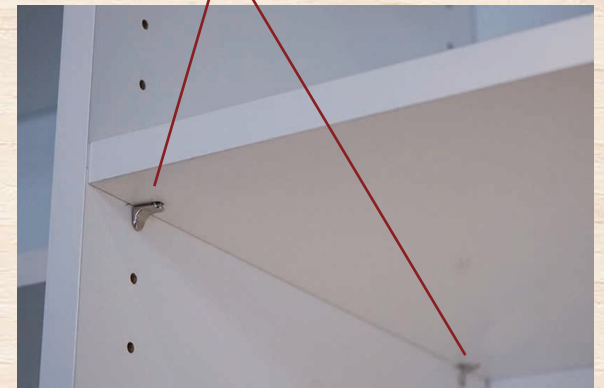


Back adjustable pin



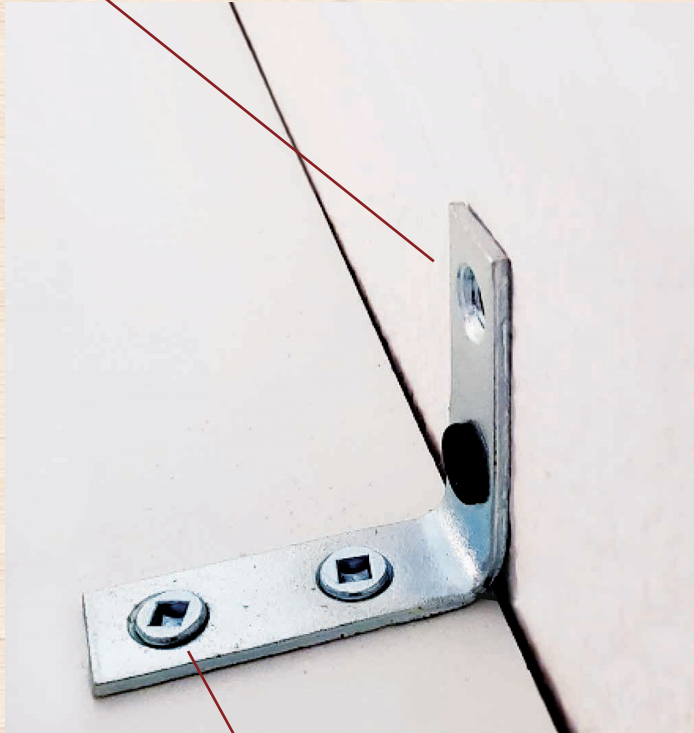
Place the shelf hole on top of front shelf pin

Place the back shelf on top of back shelf pin



L-BRACKET

$\frac{1}{4}$ " spacing from wall
on top of fixed shelf



Wood screws
installed into top
fixed shelf

TOE KICK INSTALLATION



Toe kicks are already sized and cut to fit your units. Simply apply the double stick tape included with your hardware to the back of your toe kicks and install on your units.