

User Manual

ELEMARA inflatable castle for kids (Rapid Inflation in 1 minute)

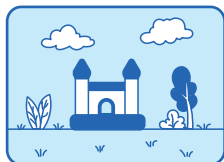
Thank you for using ELEMARA inflatable castle.

Read all instructions before assembling this inflatable device and keep instructions for future use.

Introduction

ELEMARA inflatable castle, take your dream amusement park home!

For a variety of occasions! An amazing gift to surprise children!



Garden, backyard
and outdoor scene

Suitable for large size models
or products with water
playing feature

For parties, kids activities,
summer water splashing

Prevent Young children from Drowning:

- Install fencing or other approved barrier around all sides of the inflatable device.
- State or local laws or codes may require fencing or other approved barriers. Check state or local laws and codes before setting up the inflatable device.
- Drowning occurs silently and quickly. Assign an adult to supervise the inflatable device.
- Keep children in your direct sight when they are in or near the inflatable device and when you are filling and emptying the inflatable device.
- When searching for a missing child, check the pool first, even if you think your child is in the house.

WARNING

Prevent Drowning



Children-especially toddlers-are at high risk of drowning. Closely watch children who are in or near this Constant Air Inflatable. Empty water from Constant Air Inflatable after use.



| Contents:

Product Introduction	-----	P2
Warning	-----	P3
Site Restrictions	-----	P4
Precautions for stakes	-----	P4
Precautions for playing	-----	P5
Precautions for blower	-----	P5 - P6
Installation Instruction	-----	P6 - P8
Precautions for bodyboard	-----	P8
★ Water Pipe Installation	-----	P9 - P10
Maintenance Instruction	-----	P10 - P11
Repair and Disposal Instructions	-----	P11
Common Problem	-----	P12
Customer Service	-----	P12



| Product Includes:



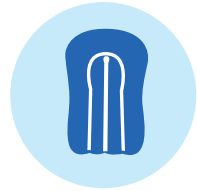
X 1



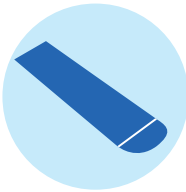
X 1



X 1



X 1



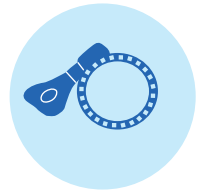
X 1



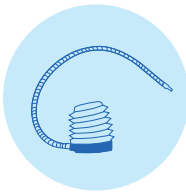
X 6



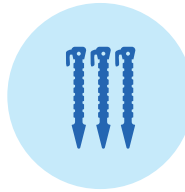
X 1



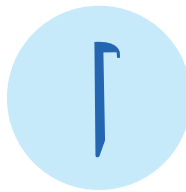
X 1



X 1



water park stakes
X 7



blower stakes
X 4



Lawn water slide stakes
X 2



X 1

| Warning



! WARNING

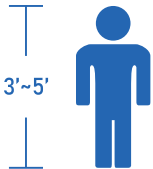
Product should be fully inflated and anchored before use.
CHOKING HAZARD -Small parts. Not for children under 3yrs.

This is not a lifesaving device. Do not leave child unattended while device is in use.
The Toy is to be assembled by an adult.
The toy be periodically examined for potential hazards and that any potentially hazardous parts be repaired or replaced.

If the product comes with water playing function or pool function, please read the following guidelines and warnings carefully.



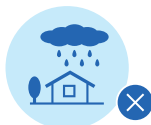
Never leave your child unattended-drowning hazard! Please keep your children under adult supervision at all time!



- For safety concern, the weight limit should be strictly observed; maximum weight of 45KG(99LBS) for individual.
- The height of player shall not exceed 5 feet(150cm).

- Minimum errors in size is normal.
- Not suitable for adults, applicable age is 3 to 8 years old children, For safety concern, not recommended for children under 3 years old.
- Small parts may cause choking hazards; Long cords and wires may present a risk of strangulation accidents.
- Only for domestic use.Indoor use or outdoor use is accepted, The product can be set up in either indoor or outdoor according to the its size and the installation condition.
- Please keep the instruction sheet for further reference. You must read all safety rules and installation, operation manuals before setting up the product.
- Warning! Failure to follow the instructions and operating instructions may present a risk of serious injury or even death!So please follow all operating rules whenever product is in use.

Site Restrictions For The Product Installation And Use.



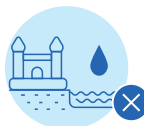
Do not use it outdoors when it rains or when in other bad weather conditions.



Playing with the bouncer outdoor in windy condition with over 32 kilometers/hour, which is not allowed. Because the gusts may lift the stakes and blow the bouncer off the ground.



Please do not set up the product on a slope or uneven ground.



Do not place the product near any water source or puddle.



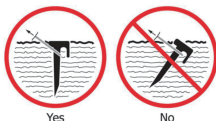
Warning! Never place it on hard ground surface, such as concrete or asphalt, because a fall into the hard ground will cause severe injury. For extra protection, it is highly recommended to place an impact absorbing cushion, soft pad or mat underneath.

Precautions For Stakes

WARNING - Follow Anchoring Instructions

User must read and follow anchoring instructions to ensure the proper: number of anchors used, soil conditions, and stake installation.

- Secure the water park to the ground with the 7 stakes provided.
- Secure the air blower to the ground with the 4 stakes provided.
- The ground support stakes are used for lawn ground surfaces to maintain stability of the structure.
- To prevent overturn or lift in use, make sure to apply enough stakes and firmly push them into the ground.
- Make sure the ground condition meets the basic requirement of installation(soil, weather and environment conditions).
- Carefully check and remove all the obstructs and objects that may affect the installation of the stakes.
- To maintain the stability of the structure and to prevent possible shift, overturn or lift because of external force or horrible weather condition, you must make sure the straps are being tied with stakes properly and push every stake into the ground firmly with vertical angle.
- Do not drive stakes at an angle(keep vertical). For best holding strength, push states into hard and dry soil. Pushing them into soft and wet soil may weaken the stability of the installation.
- The stakes should be placed level with or under ground in order to avoid tripping hazards.



Stake Angle

| Precautions For Playing

- Do not attach items to inflatable device that are not specifically designed for use with the inflatable device, such as, but not limited to jump ropes, clothesline, pet leashes, cables, wires and chains, as they have the potential to cause a strangulation hazard.
- No head-first sliding. Always slide feet-first. Also, adult supervision is required at all time.
- Food, drink and chewing gum are strictly prohibited while playing on the bouncer.
- Keep pets away from the inflatable product or the blower while in use.
- Ensure that the entrance and exit of the castle remain unobstructed at all times and are not blocked by any obstacles and objects. There should be no any obstacle 78 inches from any points of the slide opening.
- Please ensure that children play in the activity area of the product and under supervision of the adults at all time.
- User Dress Code- Avoid and remove all head gear, loose clothing, hard, sharp or dangerous objects, such as, but not limited to jewelry, cape, scarf, helmet, etc.
- When playing, please separate the children with large age gap to avoid danger.
- Prevention of users from climbing or hanging on the containing walls.
- Prevention of inappropriate activities (for example, roll, shake, collide, wrestle, chase and other intense and rough plays).
- Please strictly observe the operation rules in the function areas, such as slide and climbing wall.
- Closely watch children who are in or near this Constant Air Inflatable.
- Product shall be fully inflated and anchored before use.
- No shoes or glasses are to be worn on the inflatable device.
- Children-especially toddlers-are at high risk of drowning.
- Empty water from Constant Air Inflatable after use.

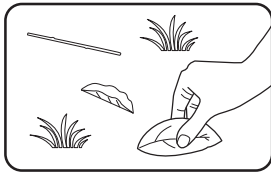


| Precautions For Blower

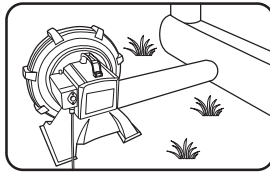
- Warning-Electrocution Hazard!
To avoid circuit overload, do not use extension cord in the operation of blower.
- Adult supervision is required at all time! It is not recommended for children under 12. As with all electric products, the operation and moving of electrical product require more detailed manual and precautions, and precautions should be strictly observed all time while in operating. To avoid electric shock or even severe injury, please carefully read the following guidelines.
- Keep all electrical lines, radios, speakers and other electrical appliances away from the inflatable bouncer.
- Warning-Electrocution Hazard! Do not set up the bouncer near or under electrical wires.
- To prevent electric shock, do not immerse the blower in water, or do not wipe with damp cloth.
- Do not run cord under carpeting. Do not cover cord with throw rugs, runners, or similar covering.

- Do not route cord under furniture or appliances. Arrange cord away from traffic and walking zone where people will not be tripped over.
- Keep away from fire. Keep the blower away from water during use.
- Do not disconnect the blower during use.
- Do not use in bad weather condition.
- Check general condition of the device and the power sources before each use, do not operate blower with a damaged cord or plug, If you notice a defect, do not use it under any circumstances. Discard blower or return to an authorized service facility for examination and repair.
- Warning! To reduce the risk of fire or electric shock, do not use blower with any solid-state speed control device. Unplug or disconnect the blower from the power supply while not in servicing.

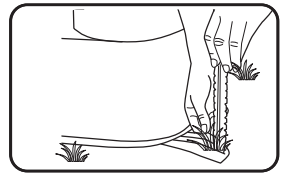
Installation Instructions



(A)



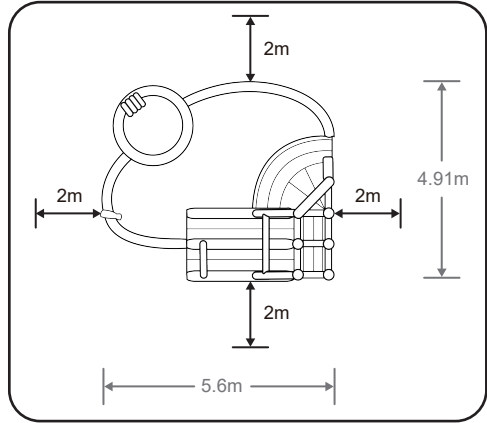
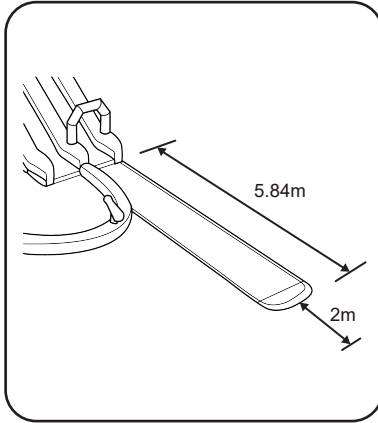
(B)



(C)

- A, Carefully check the ground first, and make sure the place you want to set up is clean from any hard object and debris. Then, unfold the main structure and set it up on a flat and tender ground surface. Remember to keep at least 2 meters safe distance in surroundings.
- B, Place the electrical blower in a dry place, and please keep it away from the water source while in use. Stretch the inflation tube and attach it to the nozzle of the blower and must keep the inflation tube smooth and untwisted. Plug in an electrical outlet and turn on the blower, the inflation will be done in 1 min. But you must keep the blower activated and maintain its operation whenever the bouncer is in use.
- C, Note! To maintain the stability of the structure and to prevent possible shift, overturn or lift because of external force or horrible weather condition, you must make sure the straps are being tied with stakes properly and push every stake into the ground harder. Also, make sure to anchor the product and blower with enough, corresponding ground stakes before playing.
- Unpack the slide and all accessories. Unfold and lay on a smooth, level and unobstructed area on grass or dirt. The surface should be free of rocks, bumps, depressions, sticks or glasses or any debris. Avoid any objects that might rip/tear the material. Be sure there are no pipelines, sprinkler systems, electrical wires or other public facilities under the ground before setting the inflatable in the desired area.
- To protect the bottom of the inflatable from tearing or damaging, place a tarp or a mat underneath.
- Put an impact absorbing cushion, such as EVA foam pad on the ground next to the climbing wall and the end of slide, that is to protect children in case of accidental fall. There should be no any obstacle 78 inches from any points of the slide opening.

Minimum Clearance Zones

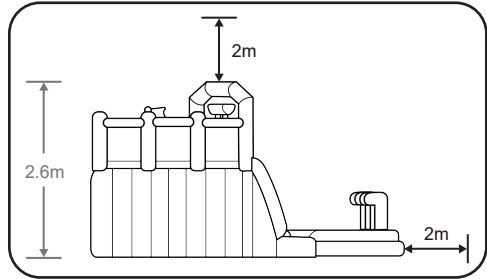


MINIMUM CLEARANCE ZONES

Make sure that there is a 6.6-feet (2m) obstacle-free zone around the product, including the slide and overhead.

INFLATABLE SIZE:

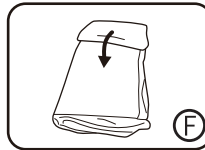
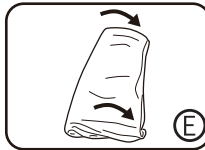
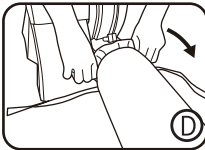
5.60L x 4.91W x 2.60H m



Response To Emergency

- In playing and the operation of the product, adult guardian must carry a mobile phone with saved emergency phone numbers list, this is to assure immediate assistance in case of emergency and accident.
- It is highly recommended that the adult guardians should be certified in the operation of cardiopulmonary resuscitation(CPR). In the event of an emergency, immediate application of CPR can make a lifesaving difference.

Deflate And Fold



Deflate:

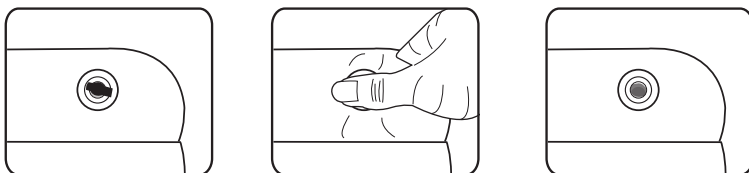
- Make sure all children are out of the structure and the blower, before deflation.
- Turn off the blower switch and unplug the power cord. The structure will collapse quickly.
- Detach the inflation tube from the blower and leave it on the side of the bouncer(D).
- Remove all the ground stakes.

Fold:

- Fold the product from outer part to inward, driving out as much air as possible, then try to fold it into a long rectangle shape(E).
- Finishing folding from the end opposite of the inflation port to the side of inflation tube, make sure to cover the surface properly(F).
- In the end, now you can put the folded bouncer into the storage bag that is provided(G).

Precautions for bodyboard

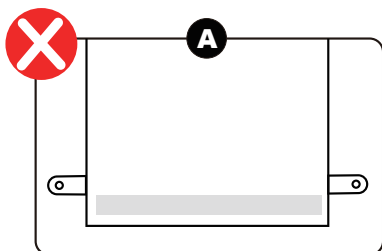
WARNING



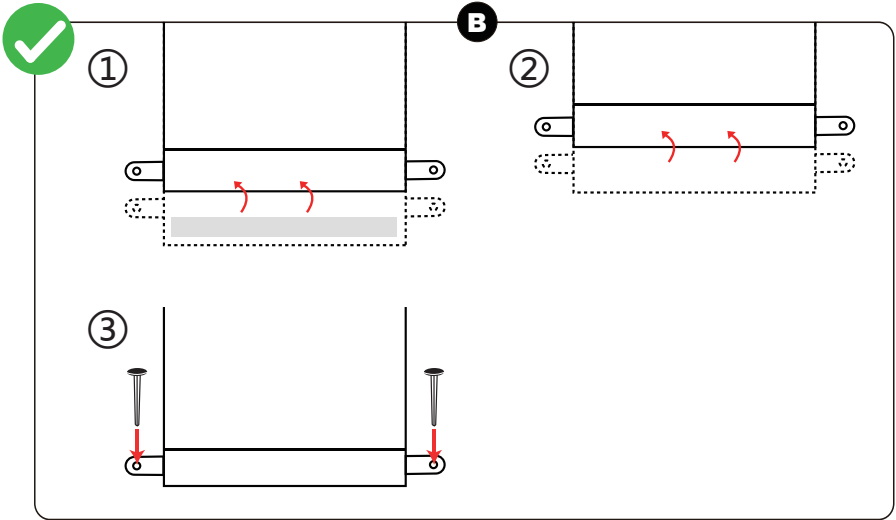
In order to prevent injury, it is necessary to press down the inflating port as shown in the picture and keep it level with the plane

WARNING

When using this Lawn Water Slides alone, you need to fold the product twice as shown in picture B. And the stakes should be placed level with or under the ground in order to reduce tripping hazards.

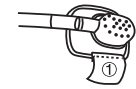
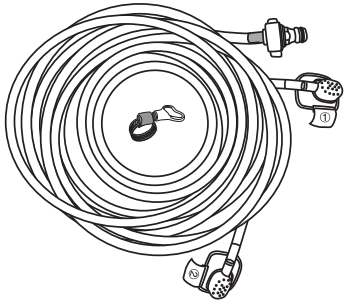


Direct use of the Lawn Water Slides will cause injury and must be folded before reuse.



Water Pipe Installation

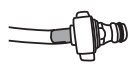
The hoses may get compressed or even twisted in transit because of external forces. In order to install the product properly, please check the hoses carefully at first, make sure to stretch and restore the twisted parts to normal shapes before assembling.



Sprinkler head ①



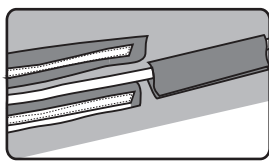
Sprinkler head ②



Water pipe joint



Pipe clamp

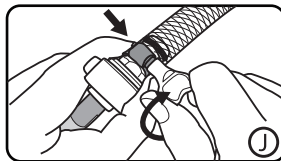
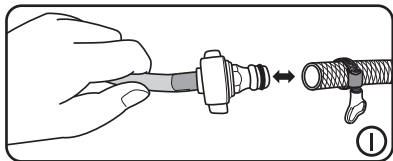
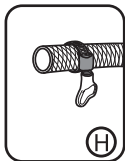


- The water pipe components accessories are shown as below (The number of sprinklers are subject to different models, our installation example has 2 sprinklers)

- The numbers of sprinklers are subject to different product categories. So each sprinkler has its own unique serial numbers to match up. For instance, sprinkler 1 match No. 1, sprinkler 2 match No. 2, etc. After confirming the right position of each sprinkler, please bind the water pipe along with the fixed Velcros in the structure.

Installation Of The Water Pipe Connector:

- After fixing the water pipe by Velcros, then find the pipe connector(joint).
- Connect the pipe connector(hose connector) to the end of a standard home water pipe, as shown in the following detailed instruction.



- Tie the pipe clamp (hose clamp) to your own water pipe, like pics H shows.
- Connect the water pipe connector to your own water pipe with pipe clamp, like the illustration of pics I. In order to avoid water spillage or leakage due to high water pressure, make sure your water pipe completely covers the very front part of the pipe connector properly.
- After binding the water pipe with the connector, then please screw and lock the hose clamp(pipe clamp)to the pipe, like pics J shows.
- For the proper installation, you need to pinch the ring part of the clamp with one hand and clockwise tighten the hose clamp(pipe clamp) handle with other hand until they are being fixed tightly and unable to rotate.

Maintenance Instructions

- Inspection and routine maintenance must be carried out at regular intervals on the structure, that is to avoid the risk of accident that cracks or leakage may cause.
- Make sure the bouncer is absolute dry before you storing it because residual water may damage the material; never store the inflatable when the unit is still wet or damp.
- Allow the inflatable to dry outdoor completely before storage.
- Store the product and the blower in dry conditions indoors when not in use.
- Check general condition of the product regularly before, during and after each use for tears, holes and other damages, or signs of deterioration. Do not use damaged or deteriorated product. A damaged, cracked or deteriorated inflatable will affect its'performance and stability, which may present a risk of serious safety problems.
- Check the ground stakes holding the inflatable in place regularly. Damaged or loosened stakes will affect the stability and how they anchoring the ground, and may result in the shift, overturn or lift of bouncer, which will present a risk of severe injuries.
- Conduct a careful check on the surface and gaps after each use, make sure to remove all the debris in the product. Allow to dry before storage.
- The inflatable is made from a nylon fabric material, you can clean the surface by a cloth with neutral, non-inflammable, non-toxic cleaners and sanitizing solutions, or just rinse it with water. Allow to dry before storage.
- Do not use chlorine based or bleach based cleaners as it may damage the threads. Do not apply any bathroom detergents. Do not use any cleaners that with a warning of "Do not use on soft vinyl". Do not use any abrasive cleaners to avoid the damages and deterioration on the surface.
- The most important thing is that since children are going to have close contact with the product, so make sure to use a cleaner that is safe and non-toxic.
- Food or drinks on the inflatable or the blower, which is strictly prohibited.

Blower Maintenance:

- Please properly turn off and unplug the blower after operation.
- Check blower regularly for unsafe conditions including damaged cord, plug or extension cord. If damage is found, do not use the blower and find a professional to do the repair.
- Blower is equipped with thermal auto-rest production. If motor is overheated, the protector will trip to protect your safety. Then, turn off the blower and let it cool down. Please follow blower instruction and check for wrong operations that may cause overheating.
- The blower does not require lubrication oil and has no serviceable parts for users to repair.
- To maintain the service lifespan of the cords and other electrical components, never leave the blower outside or in wet weather condition when not in use.
- To prevent electric shock, do not immerse the blower in water, do not wipe with damp cloth. Make sure the blower is turned off and unplugged before the cleaning, use a wring cloth to clean the surface of the blower. Allow to dry before storage.
- Do not clean the blower with chemical solutions or cleaners as they may corrode the coating and plastic parts.
- Store the blower indoor in a safety and dry location away from children when not in use.
- Loosely coil the cord when storing the blower.

| Repair And Disposal Instructions

Patching:

- A repair kit is supplied with each product. You can fix the fabric on your own if you find small cracks or tears in it. You will also need a needlework package for the repair. First, cover the damaged area with a sizeable fabric patch from the kit; then, sew up the patch and to make sure it completely covers the tear. Pay attention! Repair should only take place on the external layer of the original fabric(surface layer), and shall not pierce the internal layer(bottom layer) in case that it may impact the stability of structure.
- In addition, there is a piece of adhesive pudding, which can be torn directly in case of emergency. Then carry out sewing and other operations. If the crack is too large, it is recommended to ask a professional to repair it.
- In terms of those large tears or internal structural damages that repair kit is incapable to fix, stop using it. We highly recommend to change the structure, or entrust the product to a professional to do the repair. Also, patching the same crack or tear more than twice which is not recommended. The needles must not be left on the product after sewing, and must be properly stored and kept away from children.

Disposal

- Ensure there are no hazardous conditions or not to create any dangerous situations while you are trying to dispose the product. For instance, the place where you discard the product shall not be near any fire source or be obstacle to exit.
- Blower should only be discarded in special disposal centers that are specialized in dealing electrical products and electronic waste.
Button cell batteries should be disposed in special household or battery collection program as hazardous wastes.

| Common Problem



What if there is air leakage at the suture of the product?

- The air leakages from the pinholes and parts conjunctions are considered as a normal. This is to ensure balanced pressure and to avoid over-inflation.



Found pinholes in some parts of the product?

- Because the structure of inflatable castle is seamed by traditional sewing technology, the product may contain some pinholes (less than 6mm). They will not affect the operation and use of product.



Do you need to turn off the blower after the product is inflated?

- Do not turn off the blower while in use. Otherwise, the castle will be shrinking.



If it is a product with the function of playing with water, how to store it?

- Water seeping inside castle is common. Dry at an angle to empty it if it happens. Make sure the bouncer is absolute dry before storing it. For general storage keep in a dry and well-ventilated space.



When playing with water, you find bubbles in the pool or at the bottom of the needle suture?

- The products have passed the chemical test of formal laboratory when leaving the factory.
- As it is a sewing inflatable product, when playing with water, bubbles appear in the bottom pinhole, which is a physical phenomenon. Please rest assured to use it.

| Customer Service



officialcssupport@elemara.us



ELEMARA

Questions? Comments?

We are here to help!

Email: officialcssupport@elemara.us

Importer: OUTLIER INC
Add: 13918 E Mississippi Ave No 60260
Aurora, CO 80012, US
Tel/Fax: 941 2541873

MADE IN CHINA

