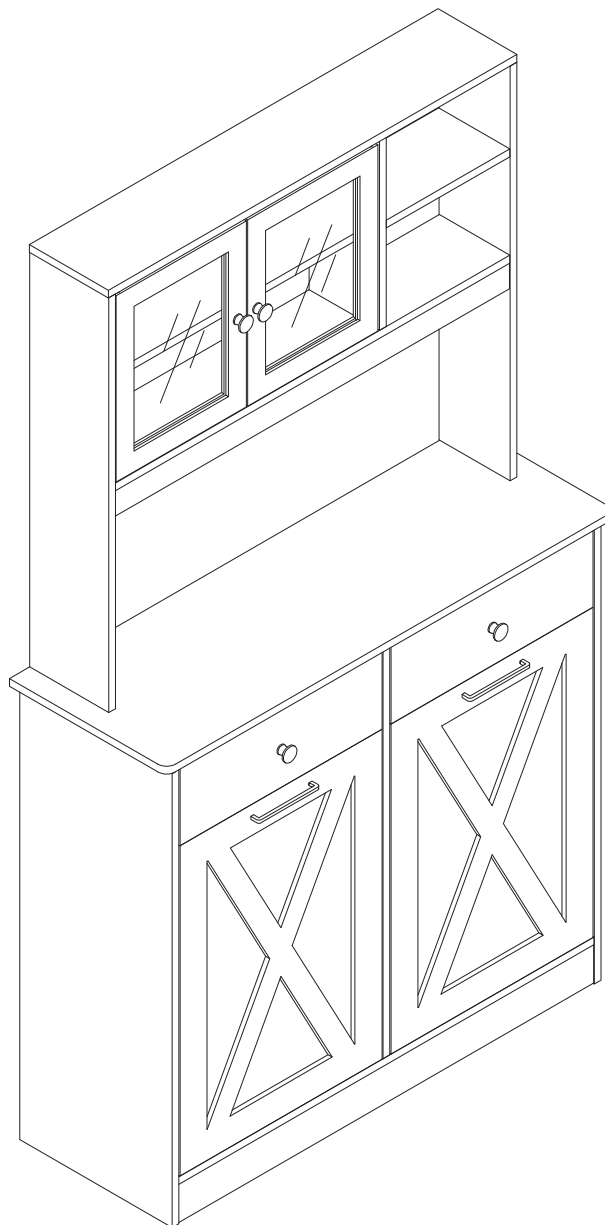
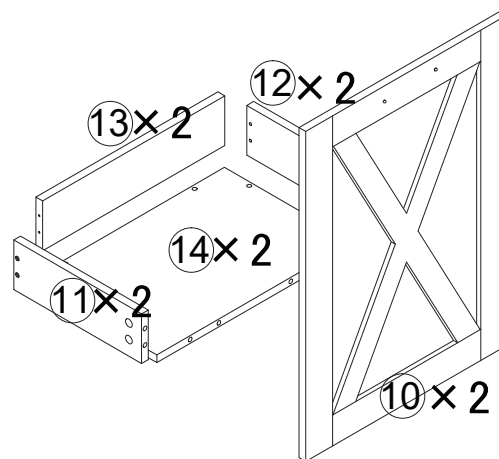
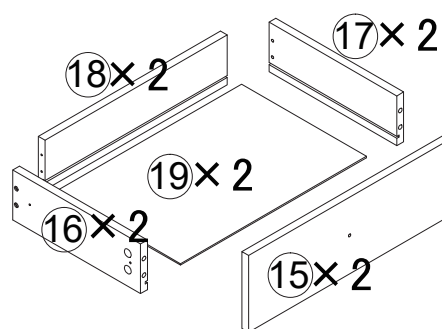
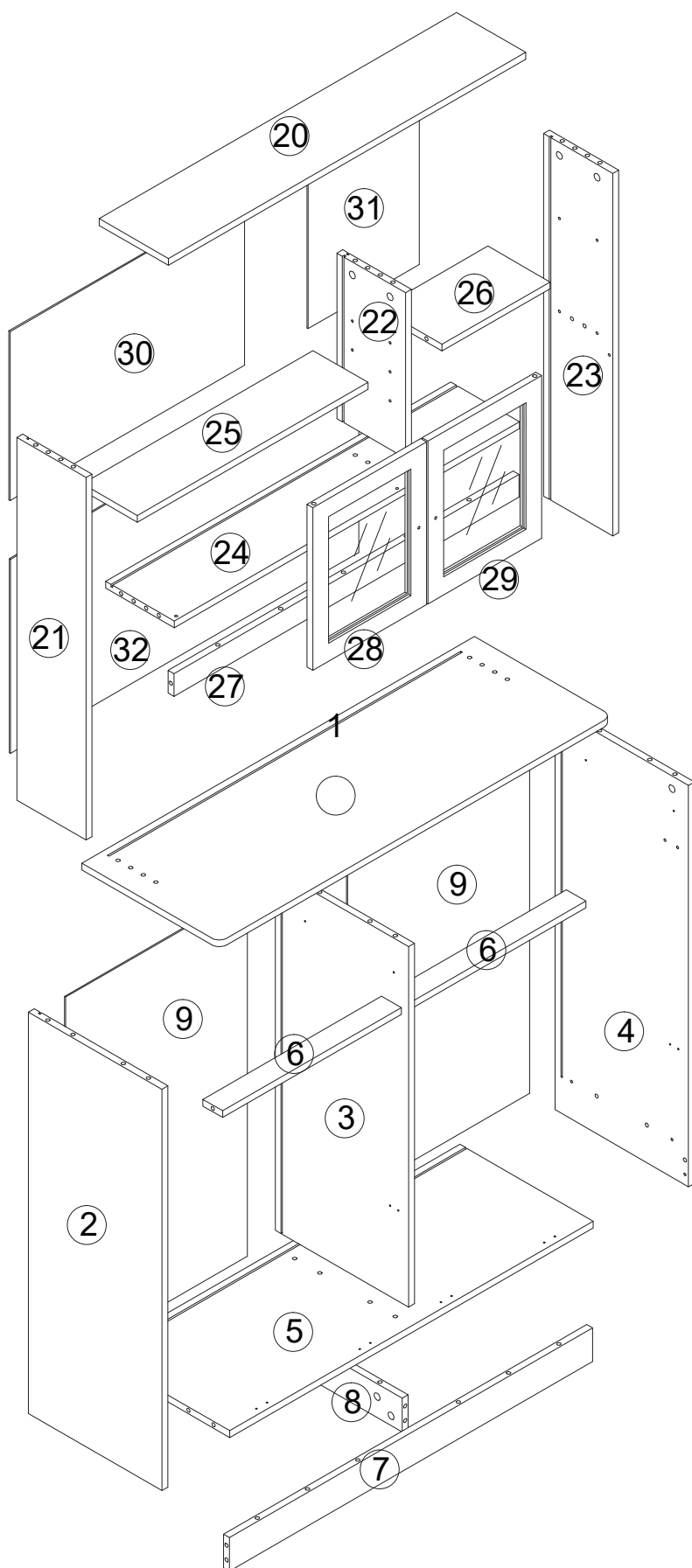


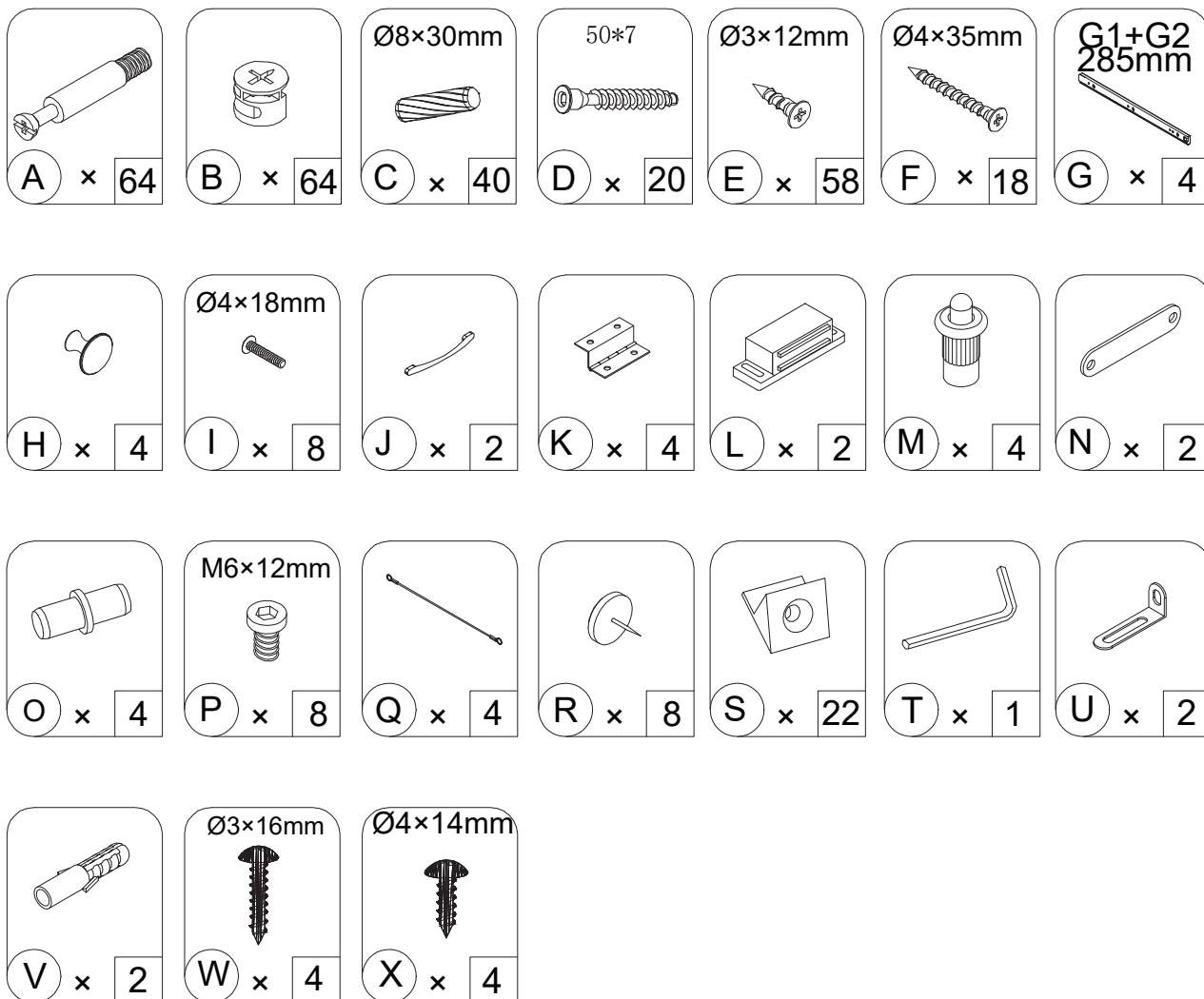
Double Tilt Out Trash Cabinet



Scan QR Code to view the
detailed assembly video

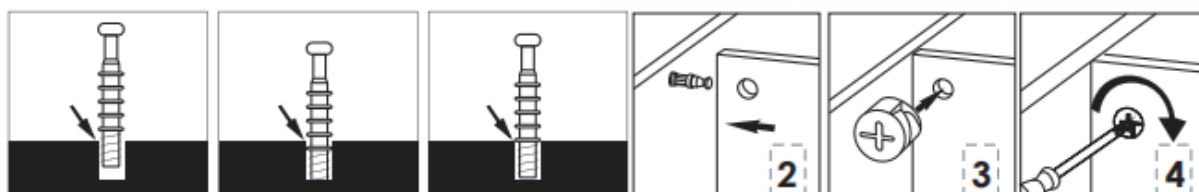
Accessories List





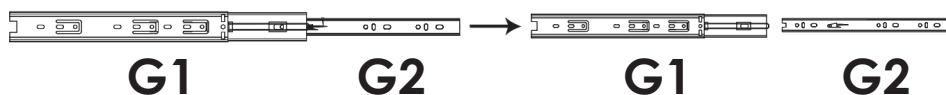
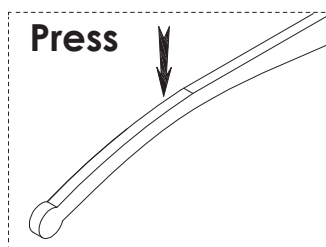
NOTICE

Installation method of three in one rod and buckle

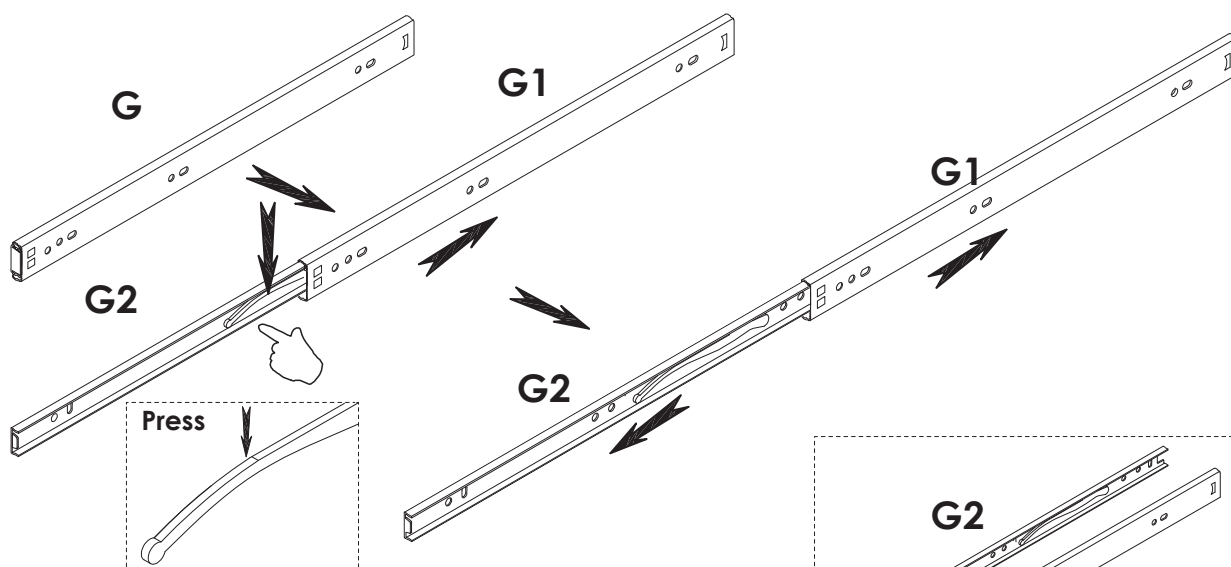


1

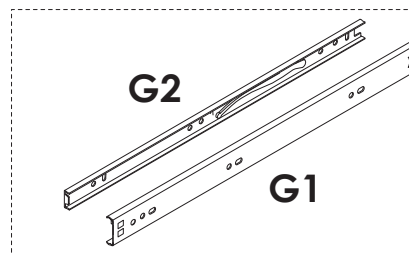
! NOTICE



Press the plastic latch and then pull the G2 out of G1 in the meantime.

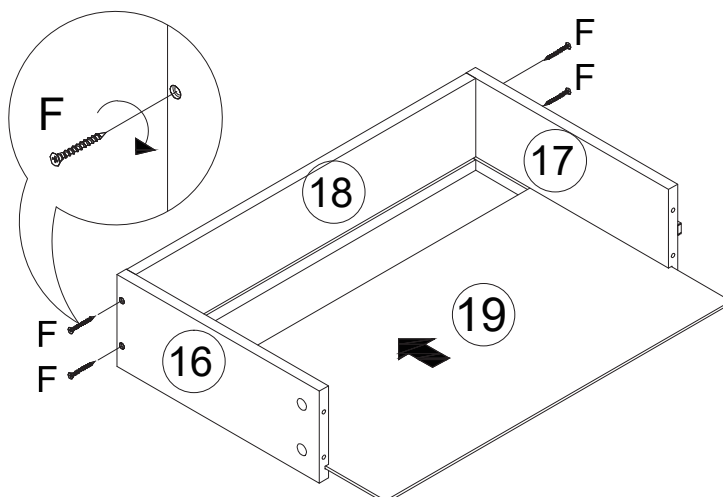


Press the plastic latch and then pull the **G2** out of **G1** in the meantime.



x4

2

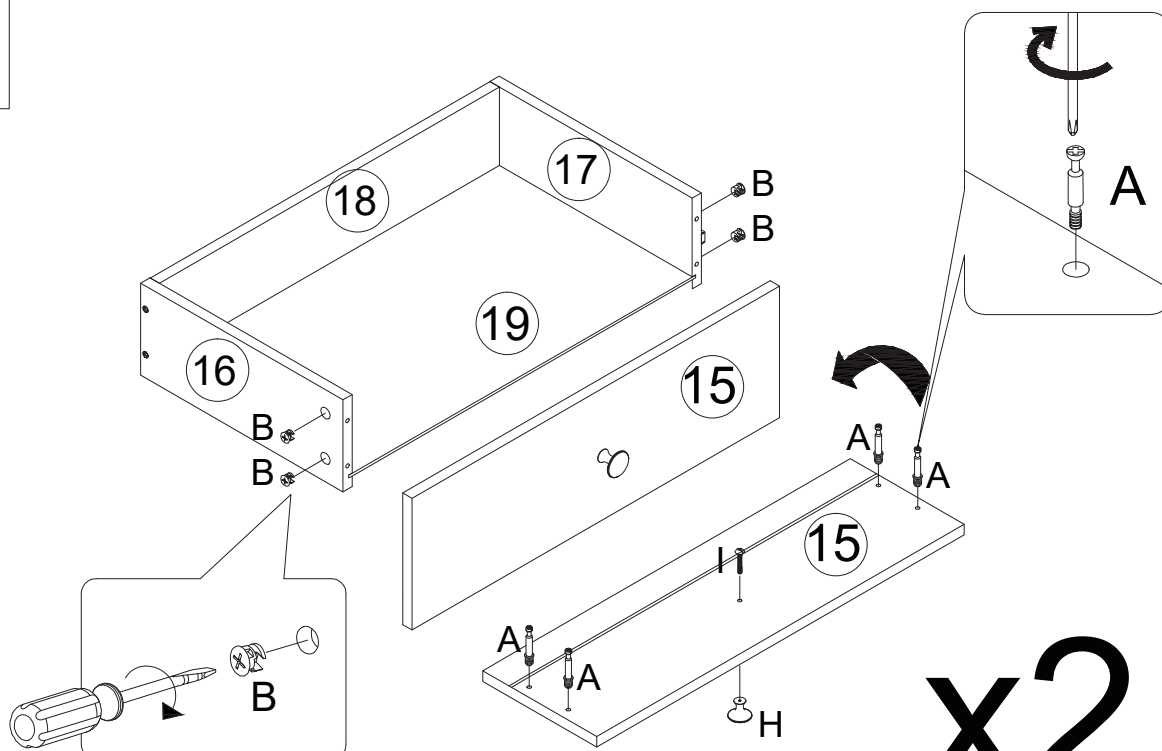


x2



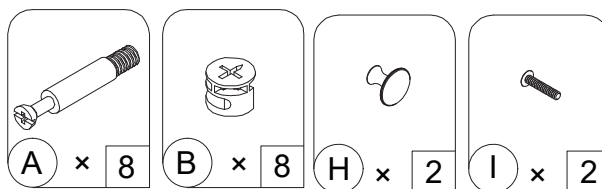
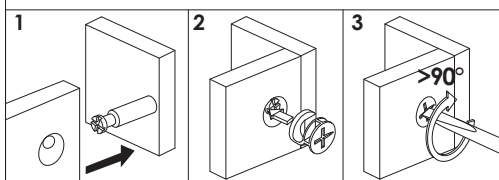
Fix plates ⑯ and ⑰ and ⑱ with screws F.
Slot is below and facing towards.
Insert board ⑲ along the slot.

3

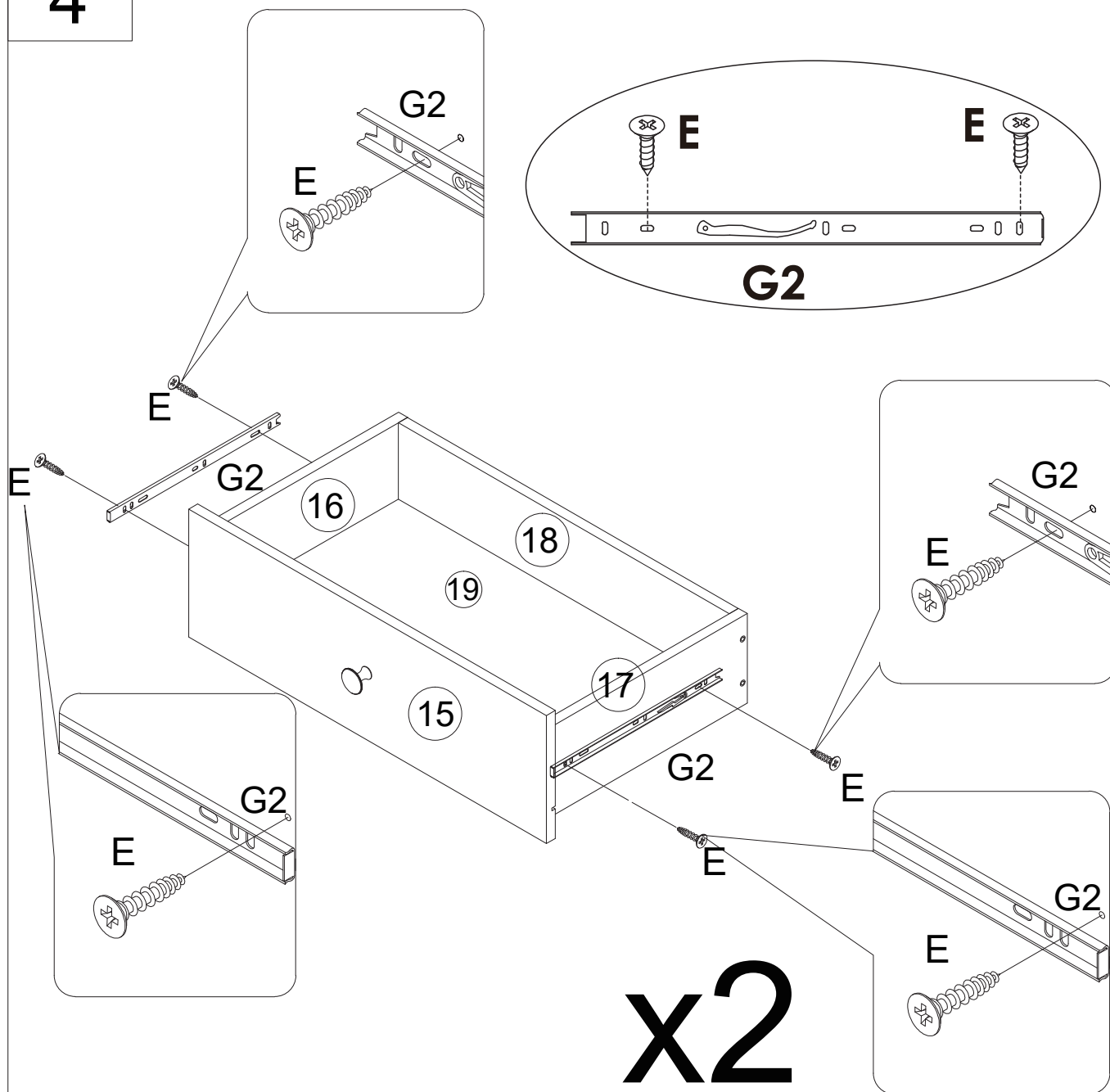


x2

Use screw I to fix handle H to plate ⑮ .
Screw 4 three-in-one screws A into plate ⑮ .
Then insert them into reserved holes on plate ⑯ and ⑰ .
Lock three-in-one screws A with parts B.



4



⚠ NOTICE

1. End of accessory G2 with long pick should be towards the innermost part of drawer.
2. Four G2 are exactly the same, except they are installed on the left and right sides of drawer, making them look upside down.

M3×14mm



E

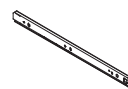
x

8

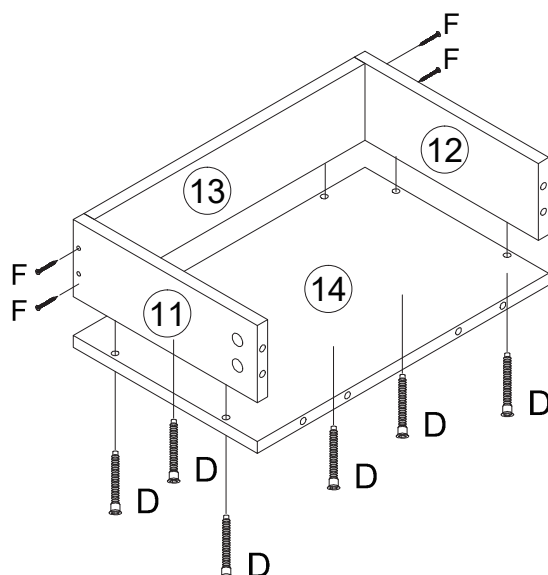
G2

x

4



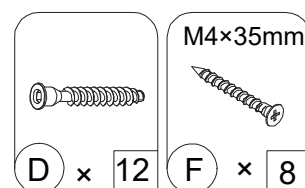
5



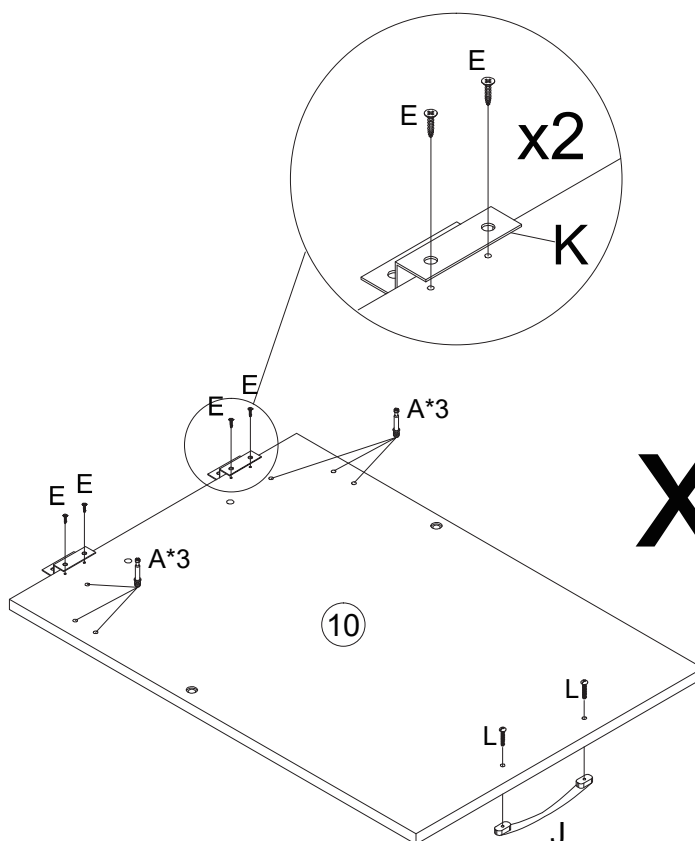
x2

Fix plates ⑪ , ⑫ , and ⑬ with four screws F.

Fix plate ⑭ to the bottom of plates ⑪ , ⑫ , and ⑬ with six screws D.



6

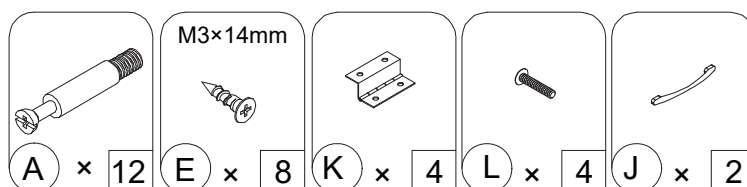


x2

Use screws L to secure handle J to door panels ⑩ .

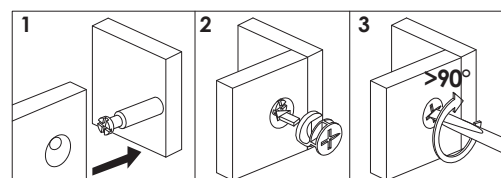
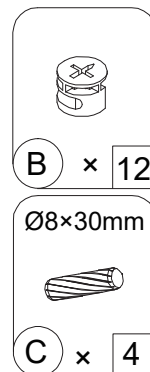
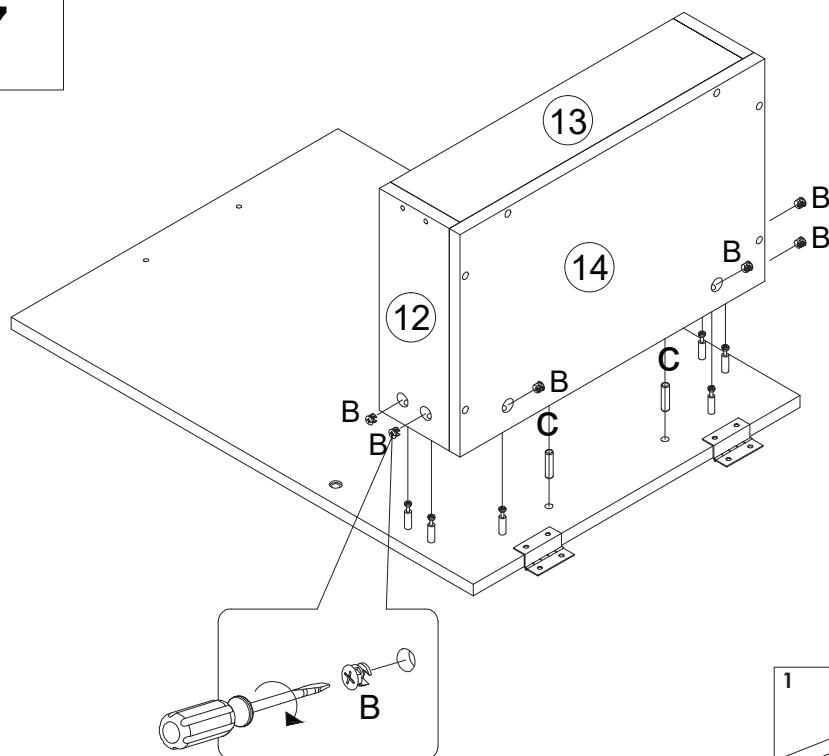
Secure leaf K to the door panel with screws E.

Install 6 three-in-one screws A corresponding to each door plate.

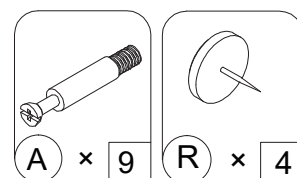
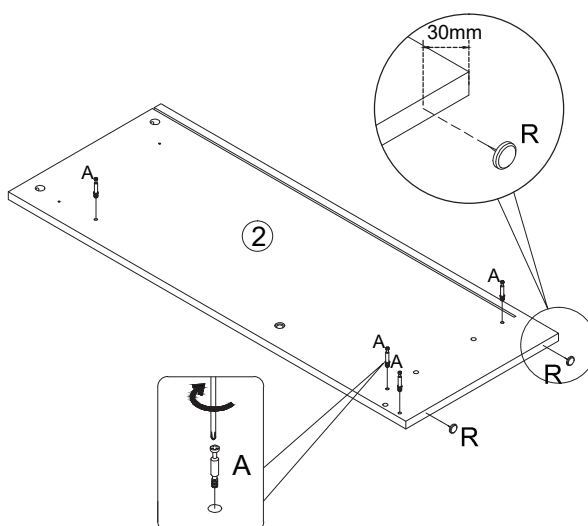
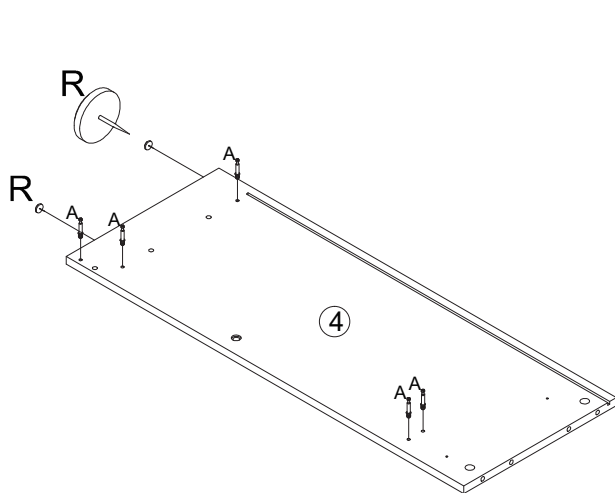


7

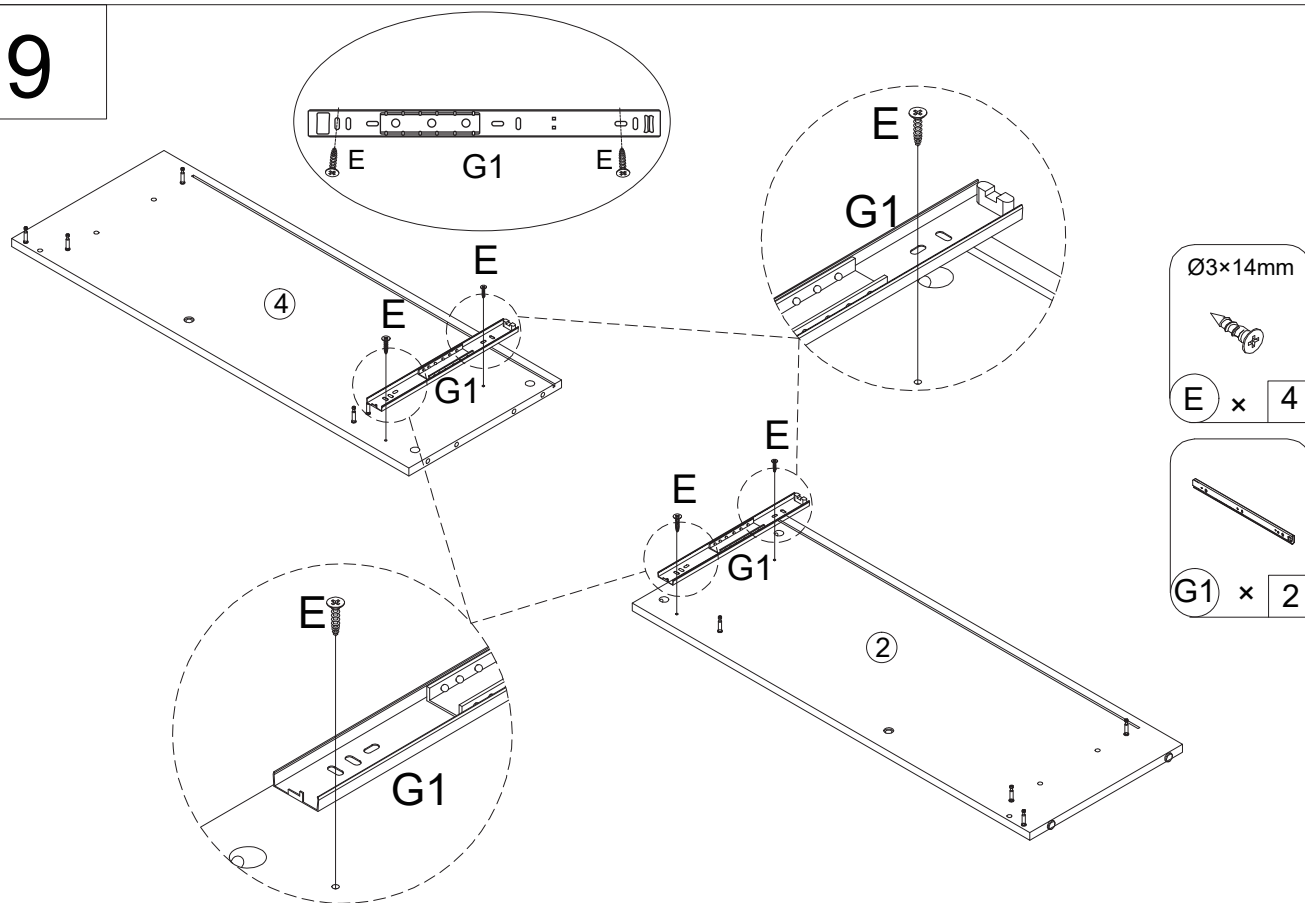
x2



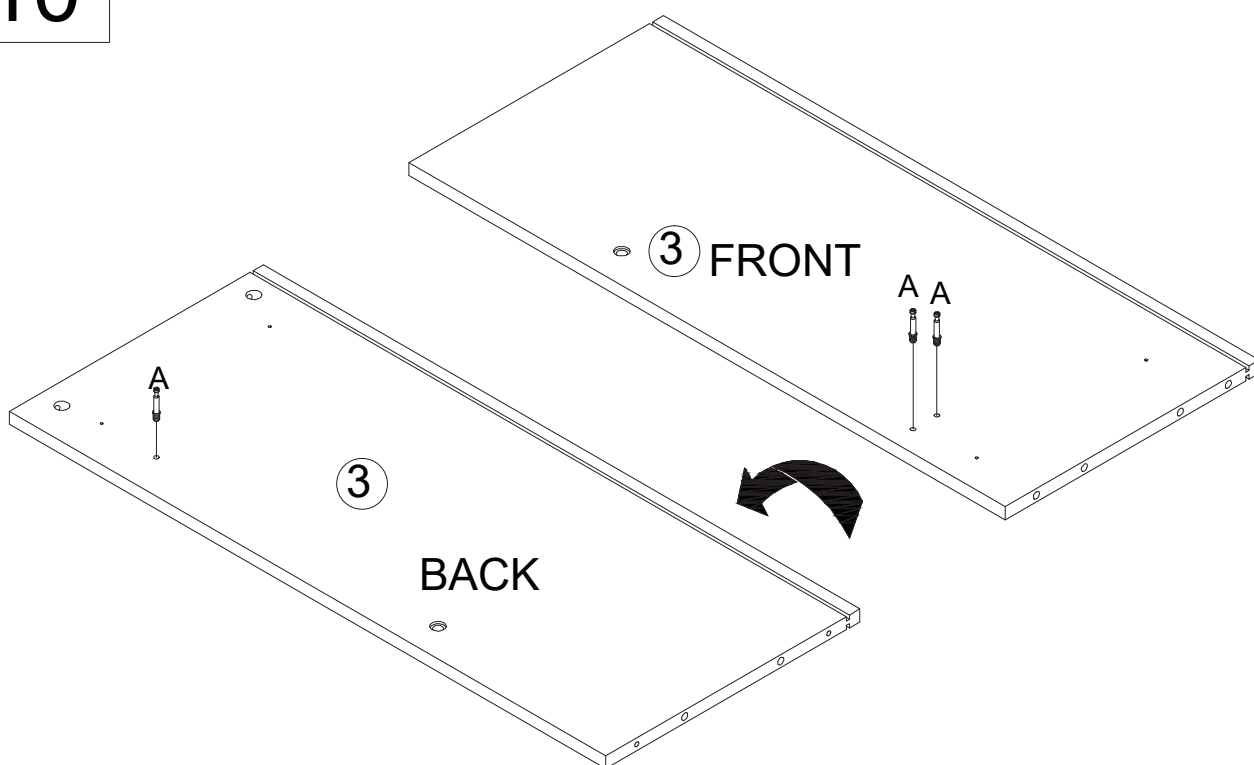
8



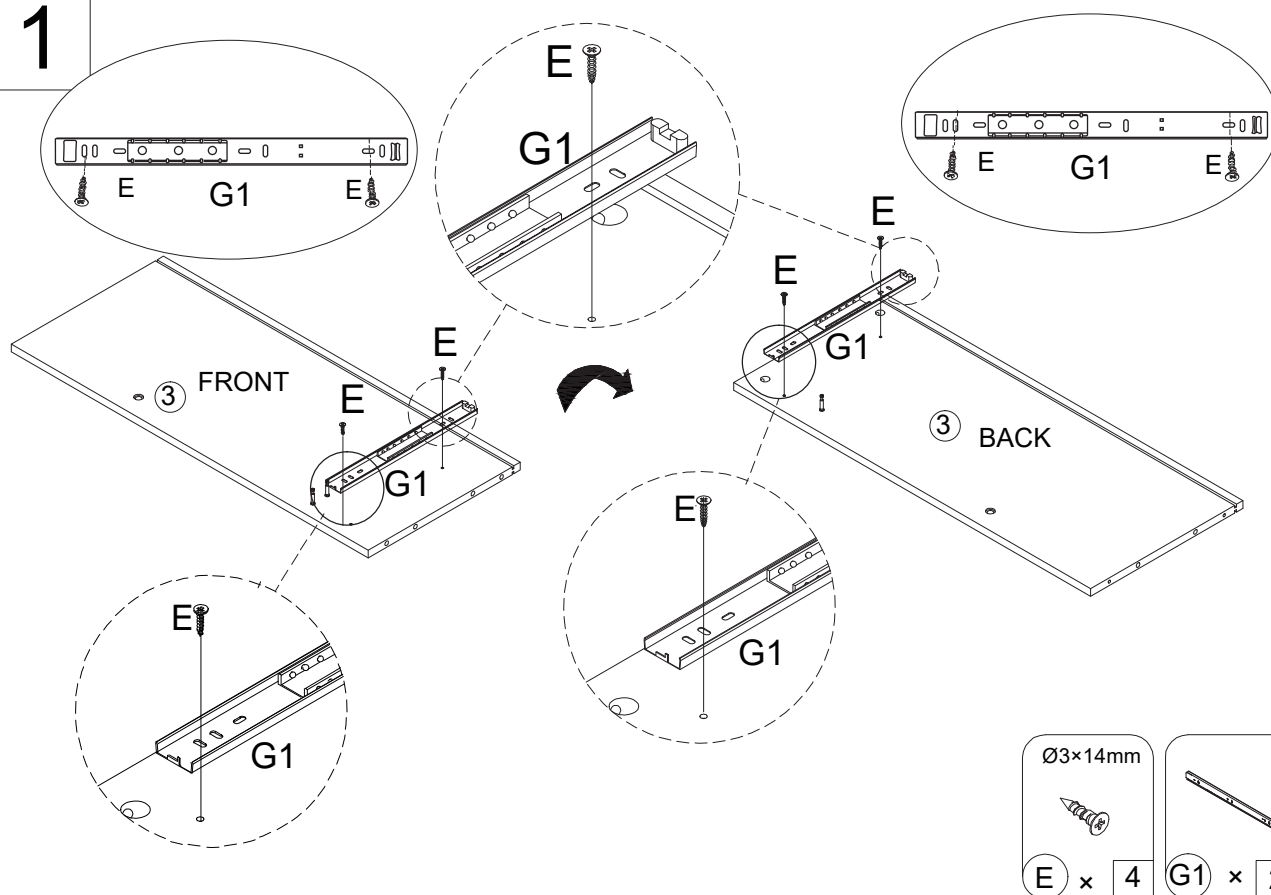
9



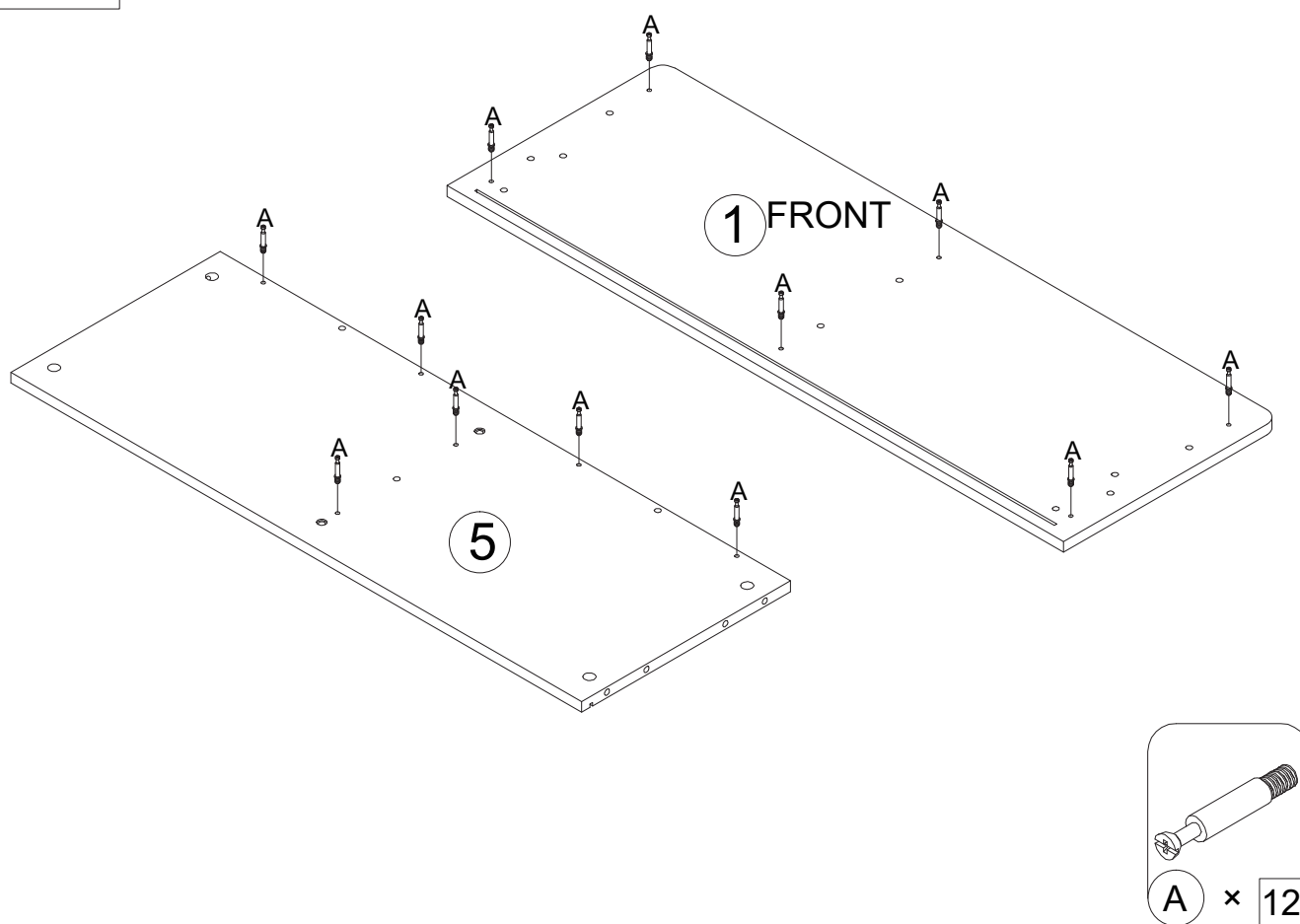
10



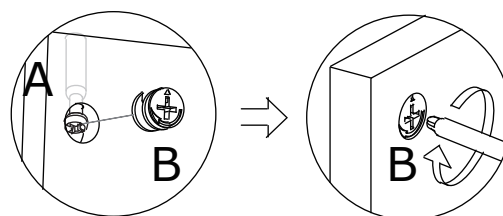
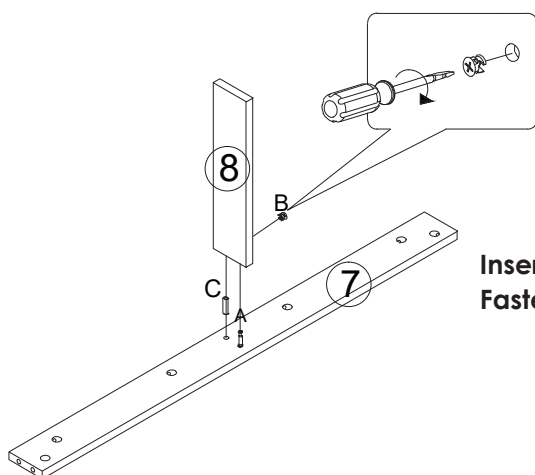
11



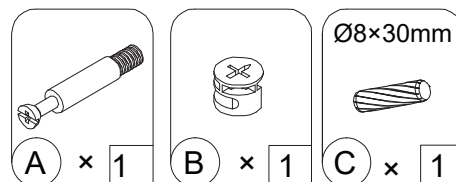
12



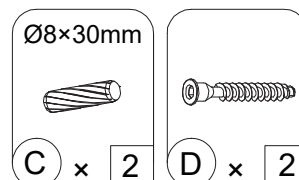
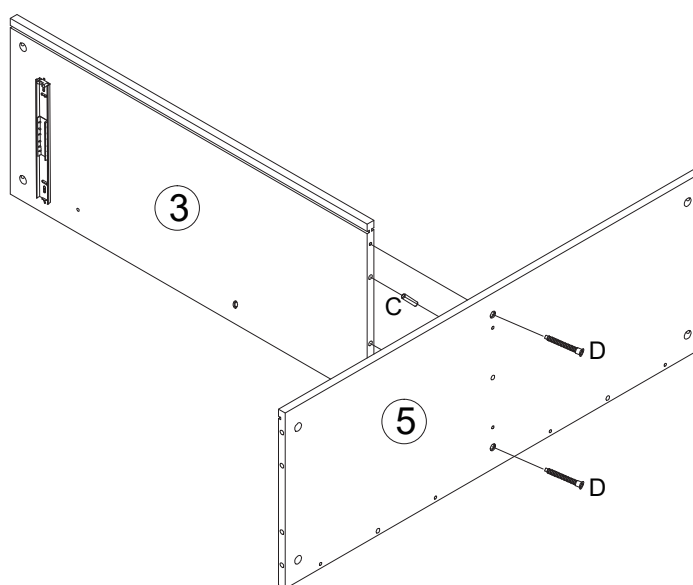
13



Insert the wooden plug C first.
Fasten plates 7 and 8 together using A and B.

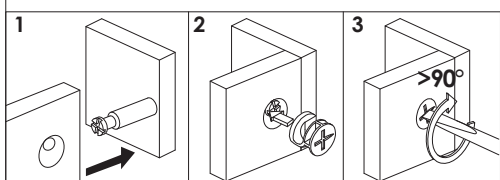
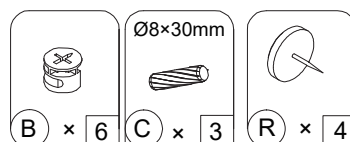
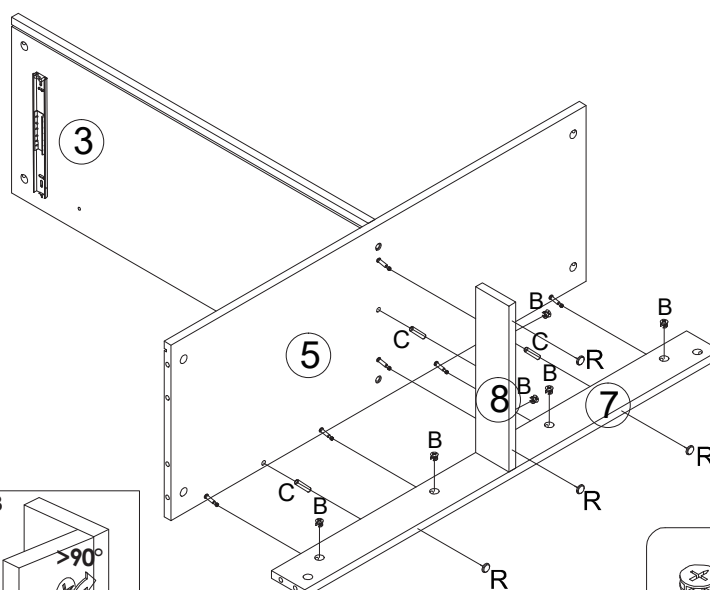


14

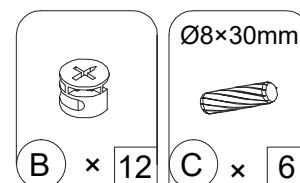
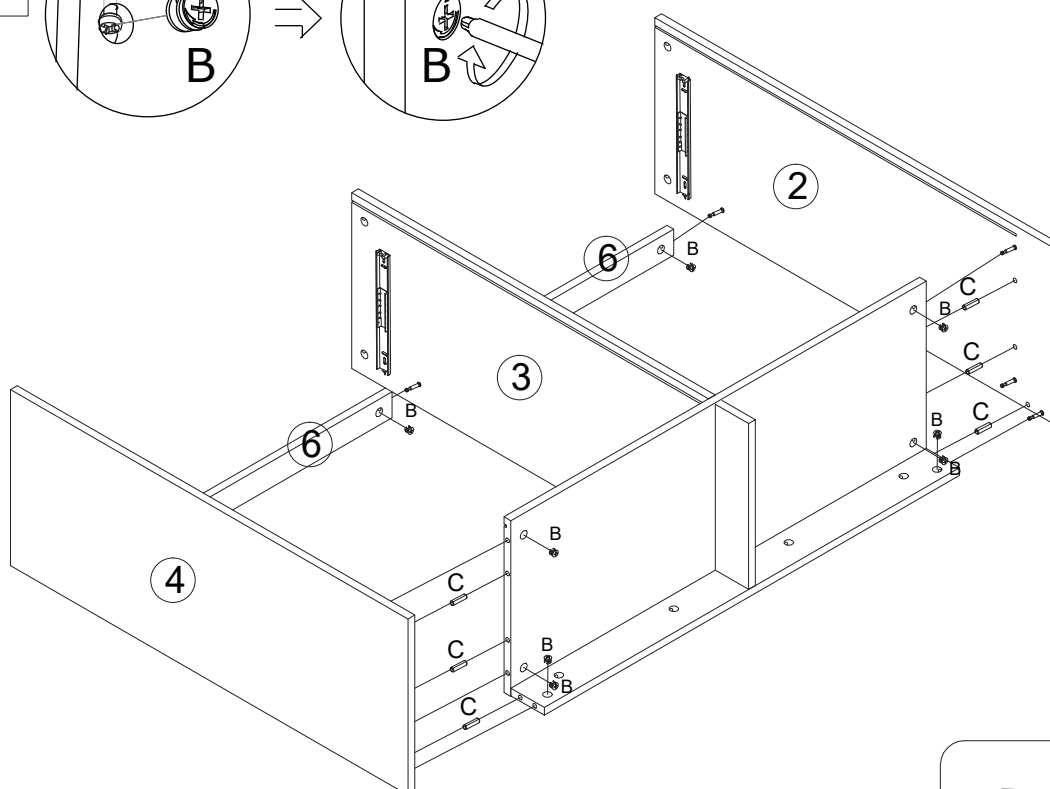
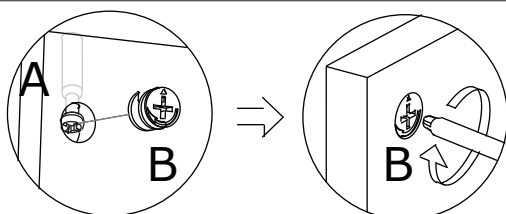


Pay attention to the connection direction of board 3 and board 5.

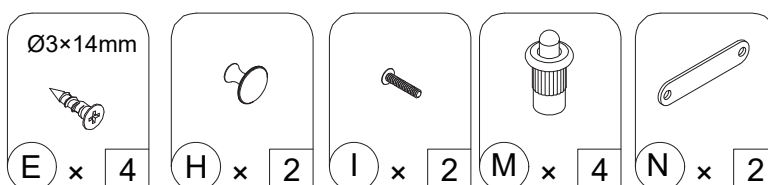
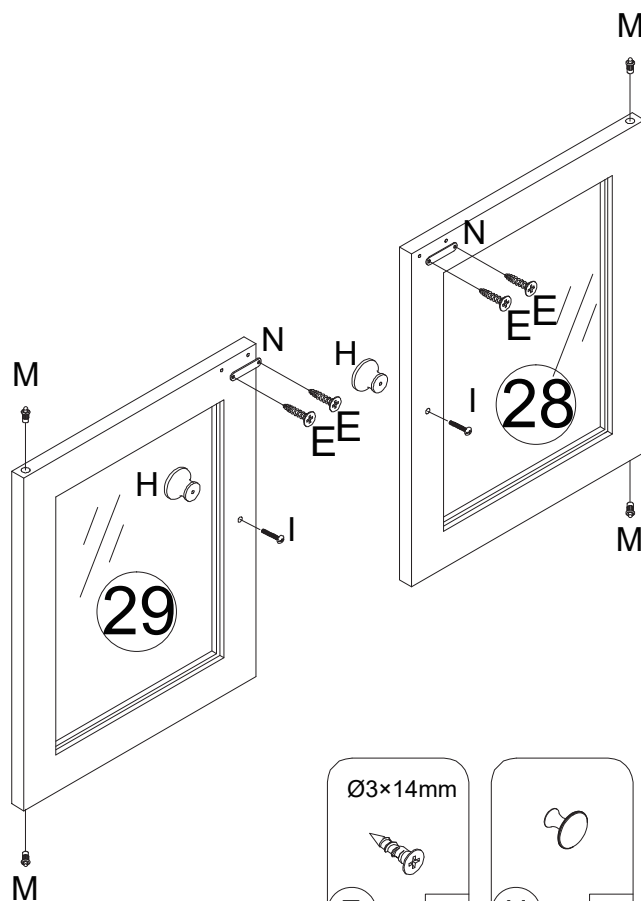
15



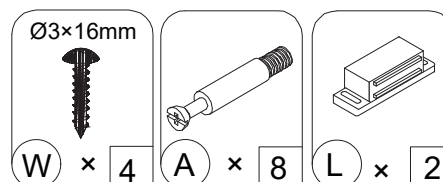
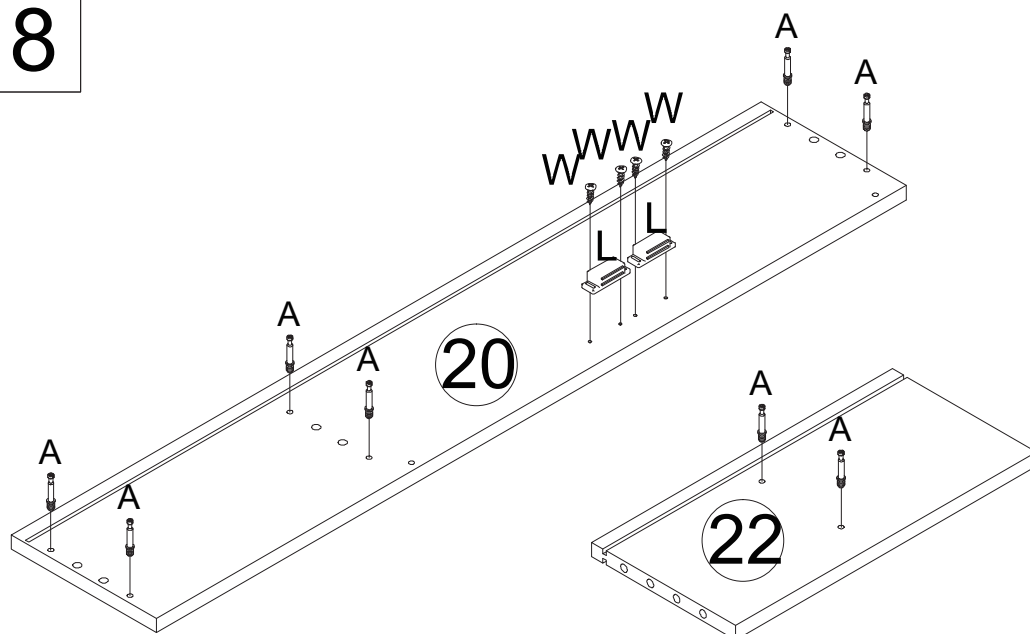
16



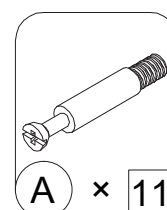
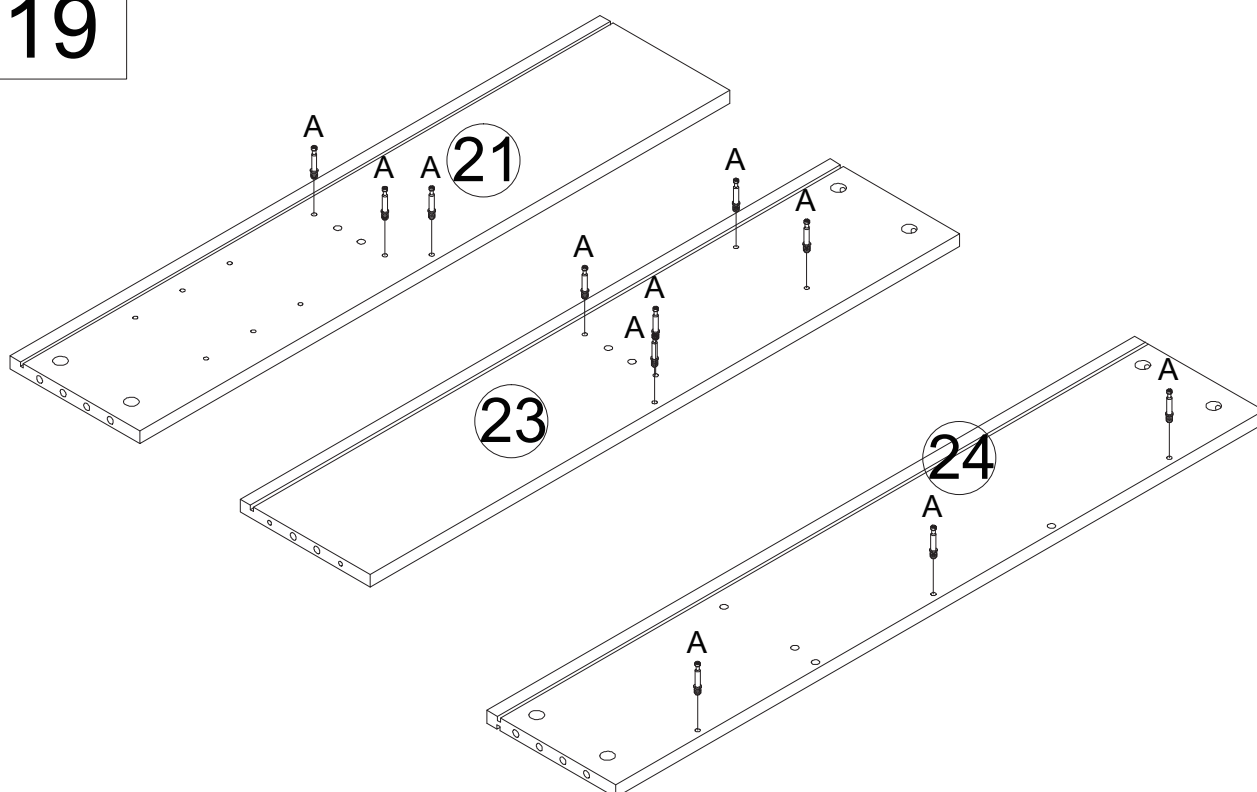
17



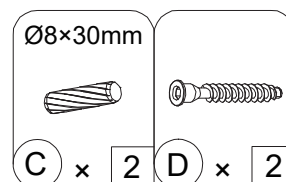
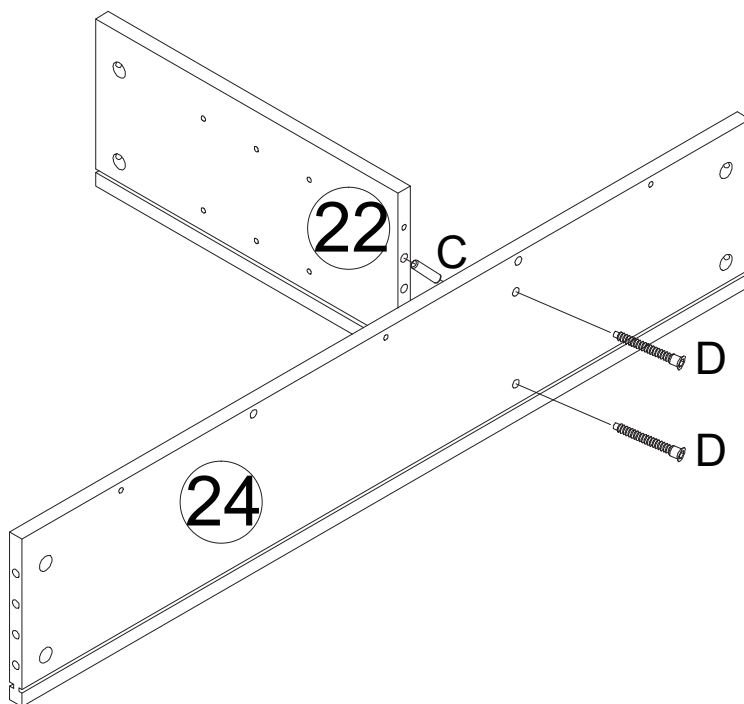
18



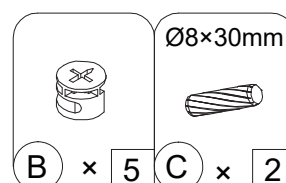
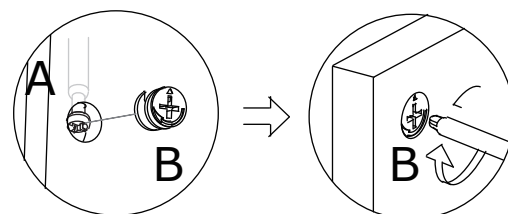
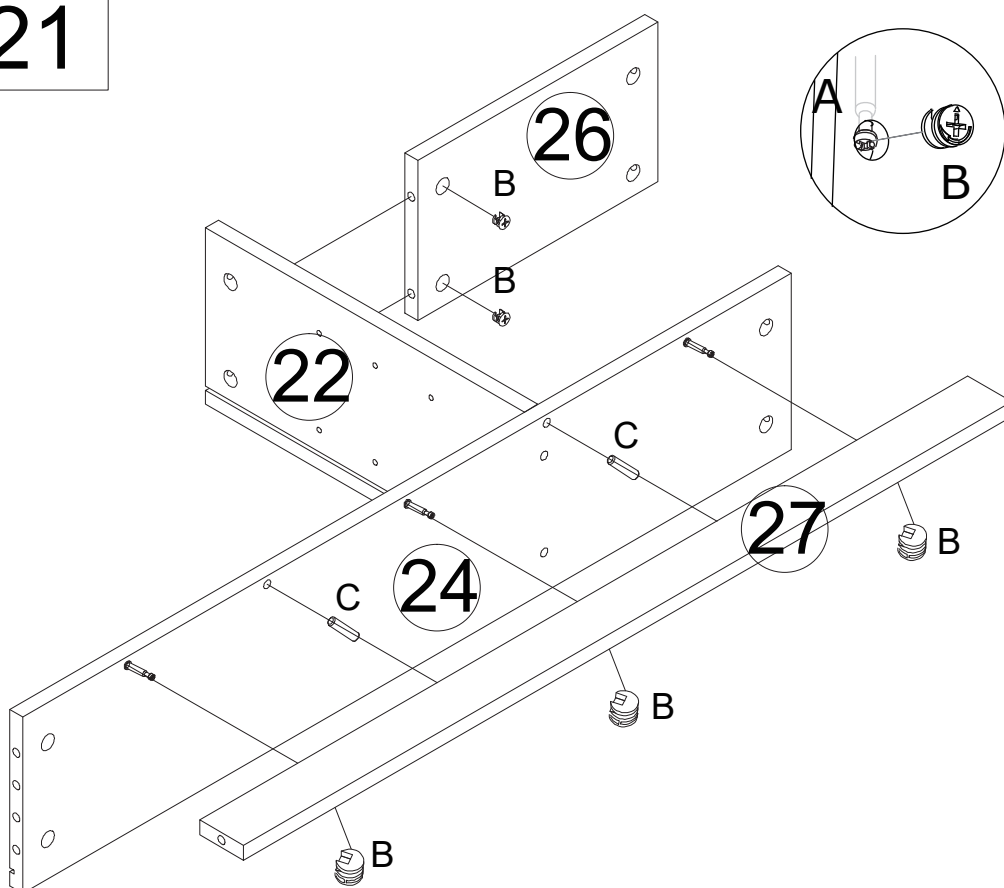
19



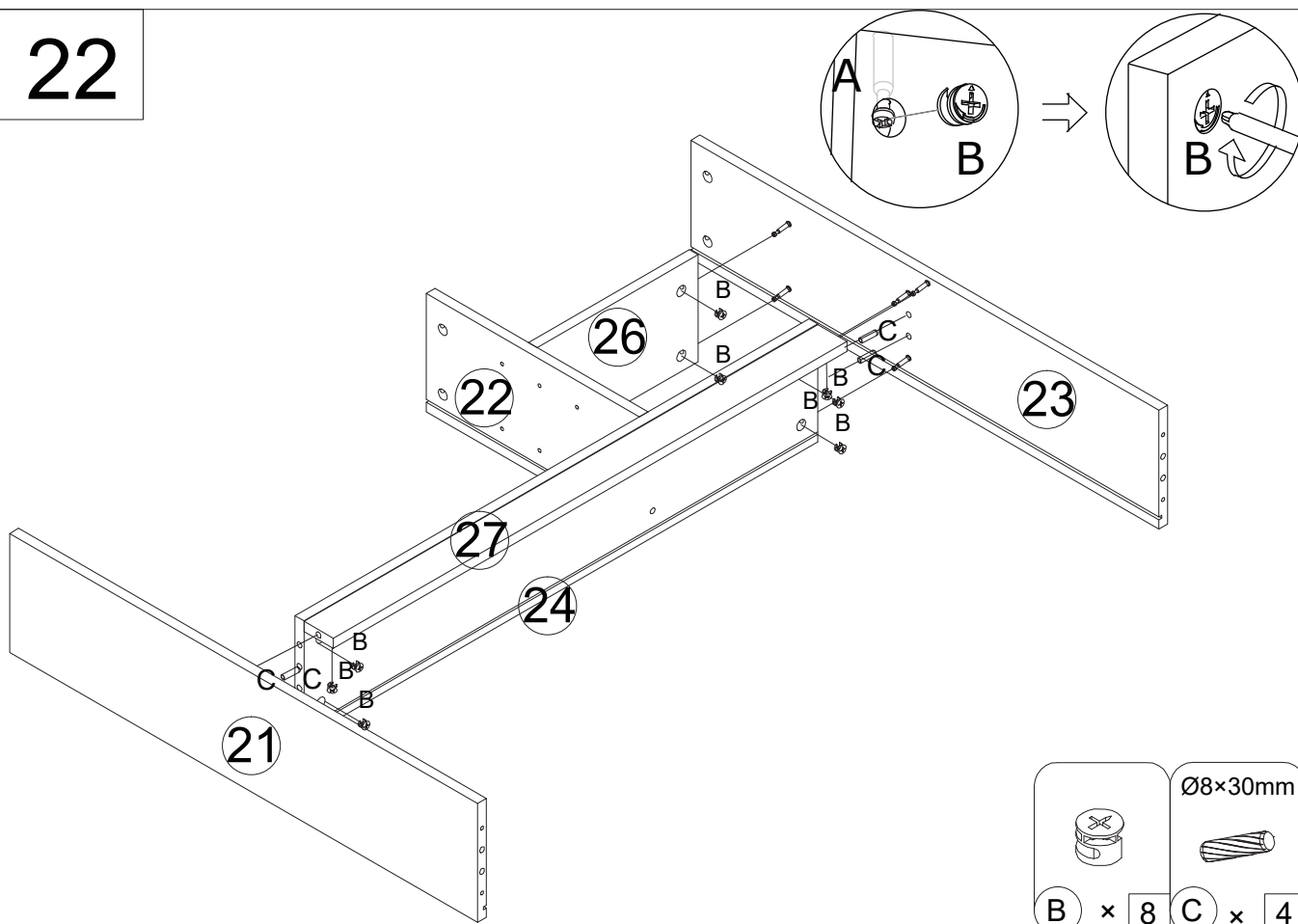
20



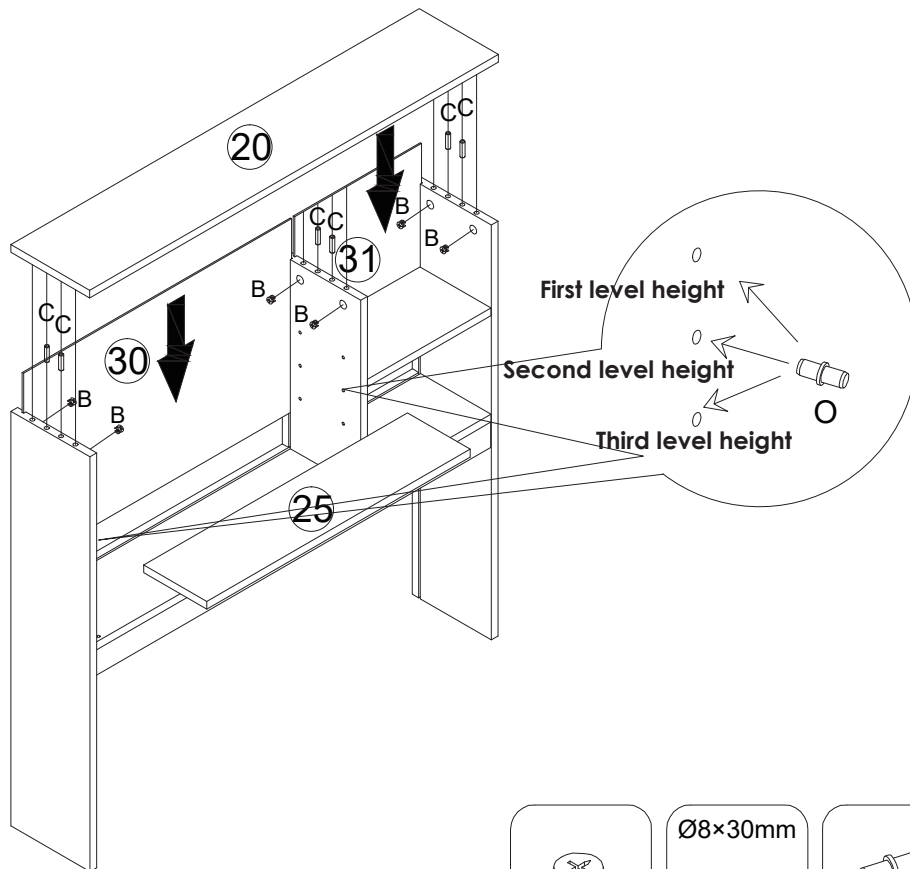
21



22

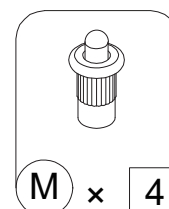
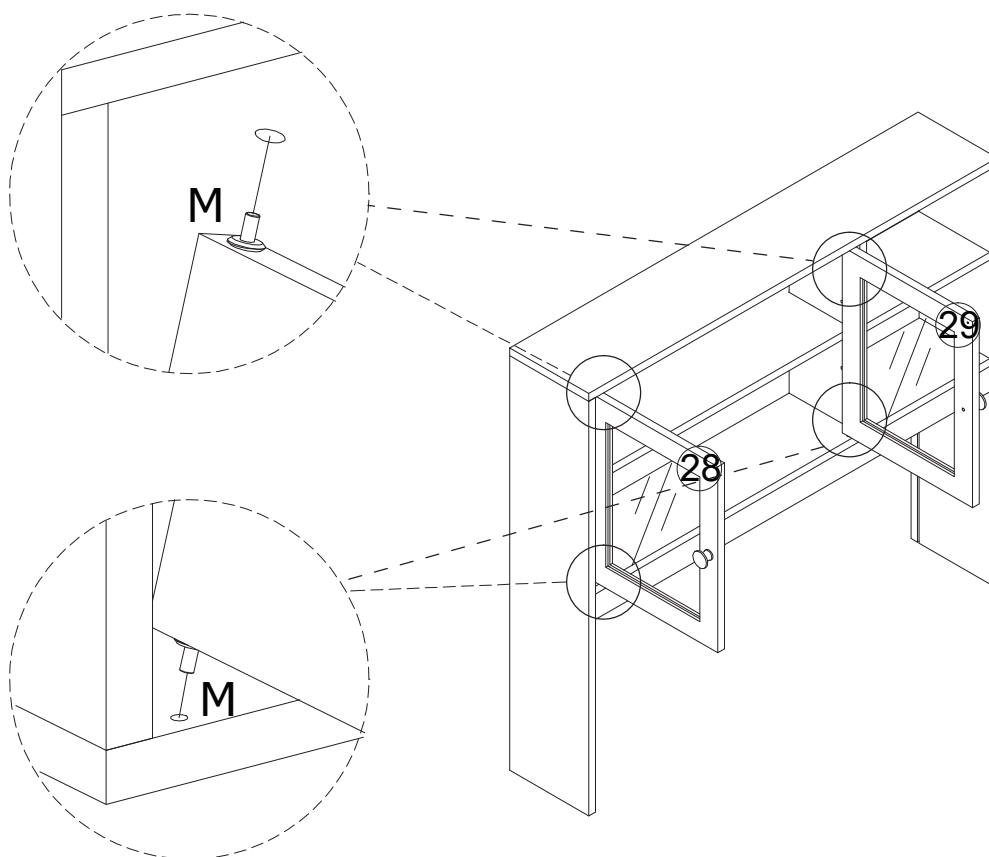


23

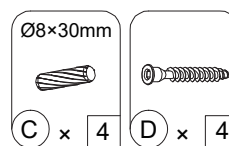
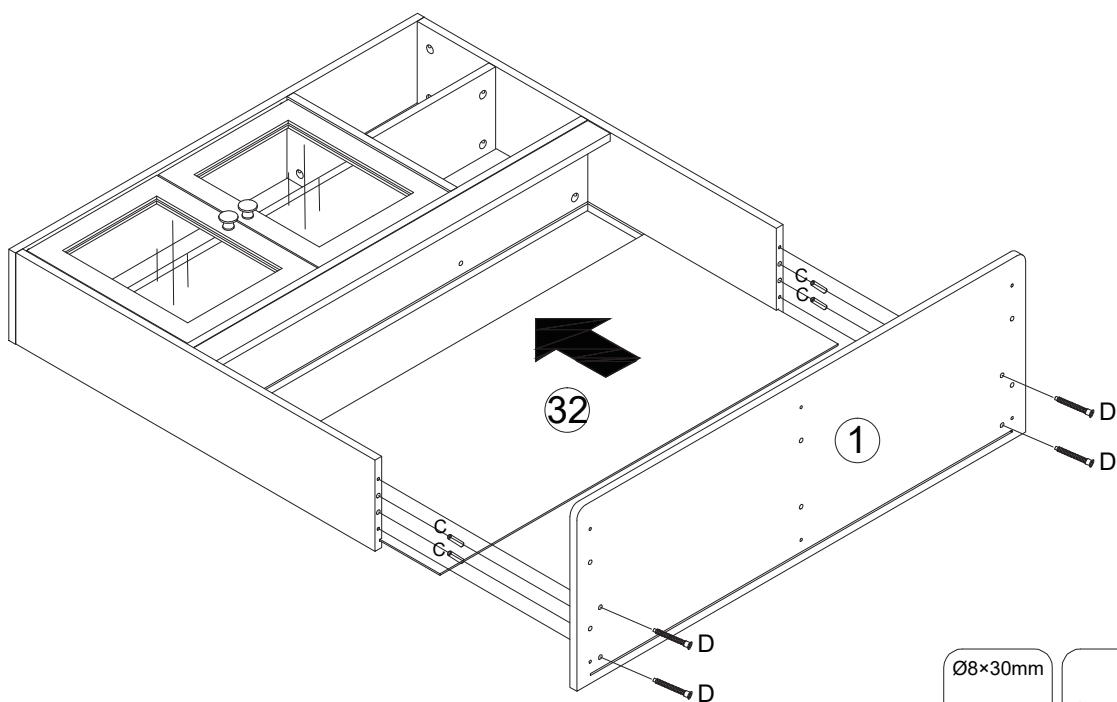


Window dividers are available in three heights

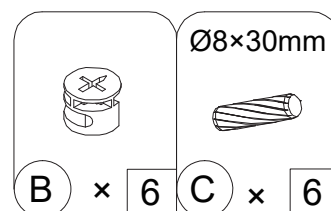
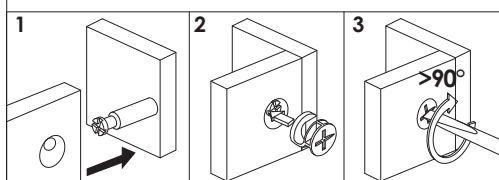
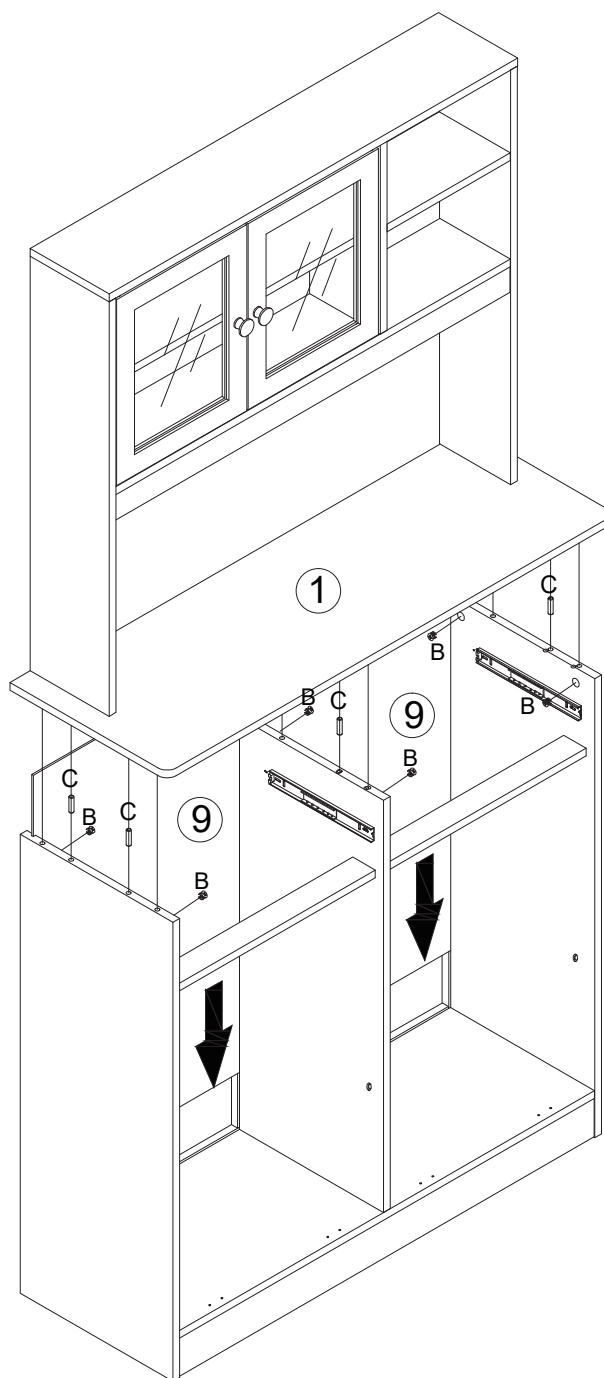
24



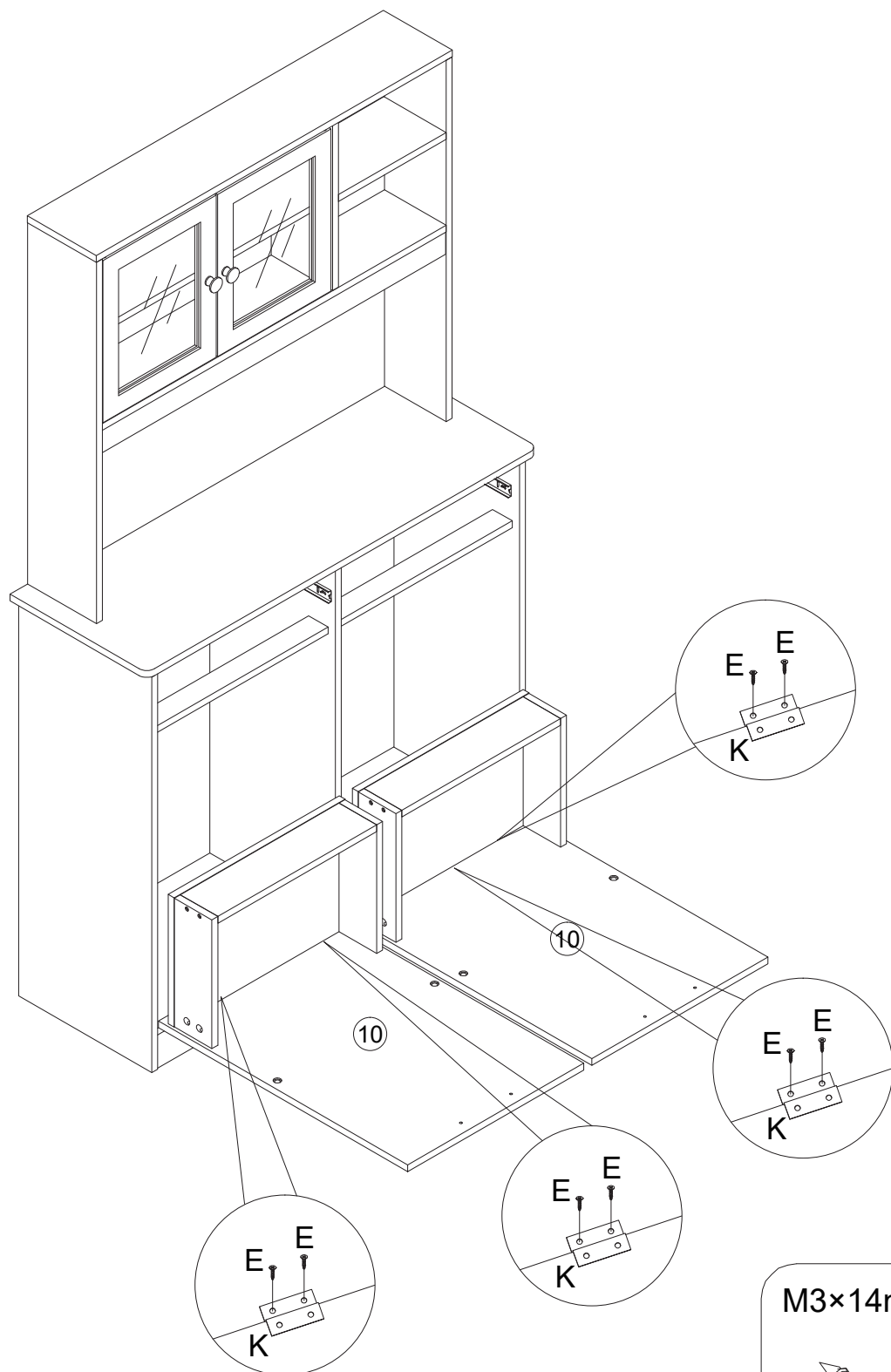
25



26



27



M3×14mm

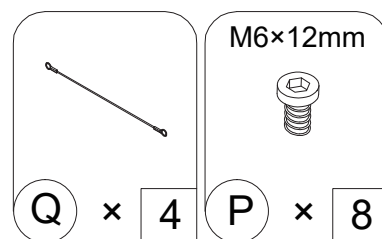
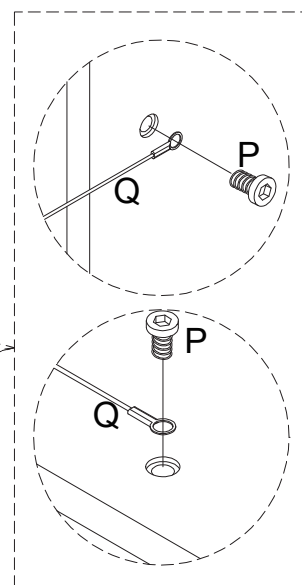
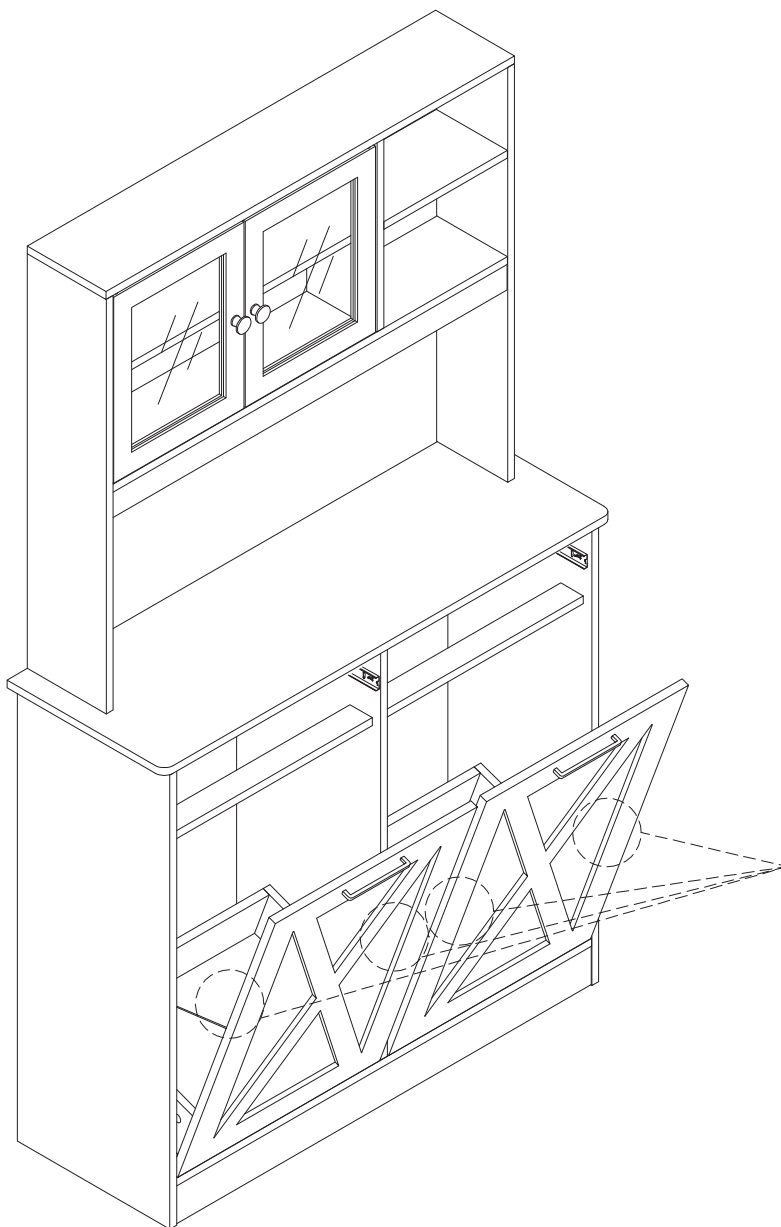


E

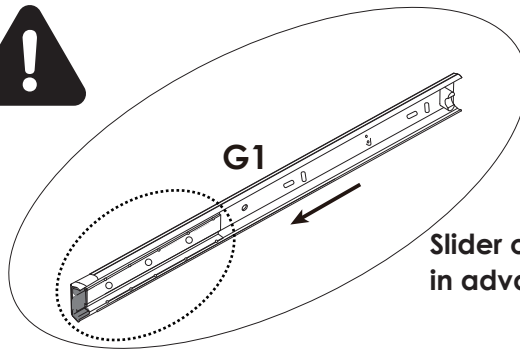
×

8

28



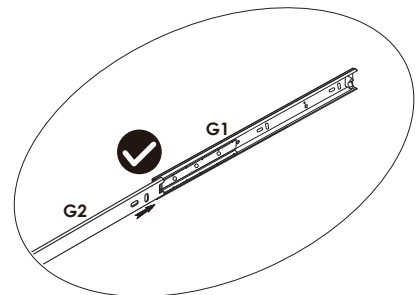
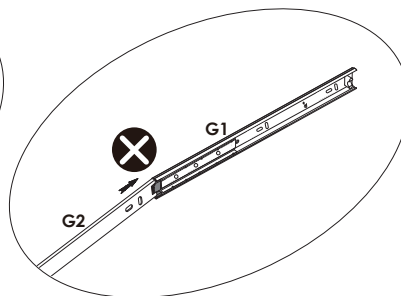
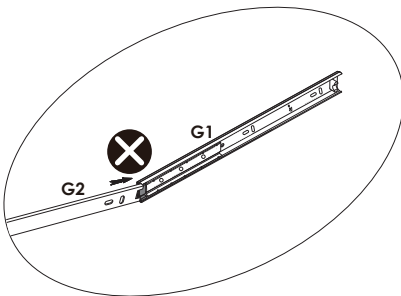
29



Slider on G1 needs to be slid to the front of G1 in advance. (the side closest to you)

Wrong: G1 and G2 are not be horizontally placed and pushed

Right: Push G1 and G2 horizontally until you hear a "click"

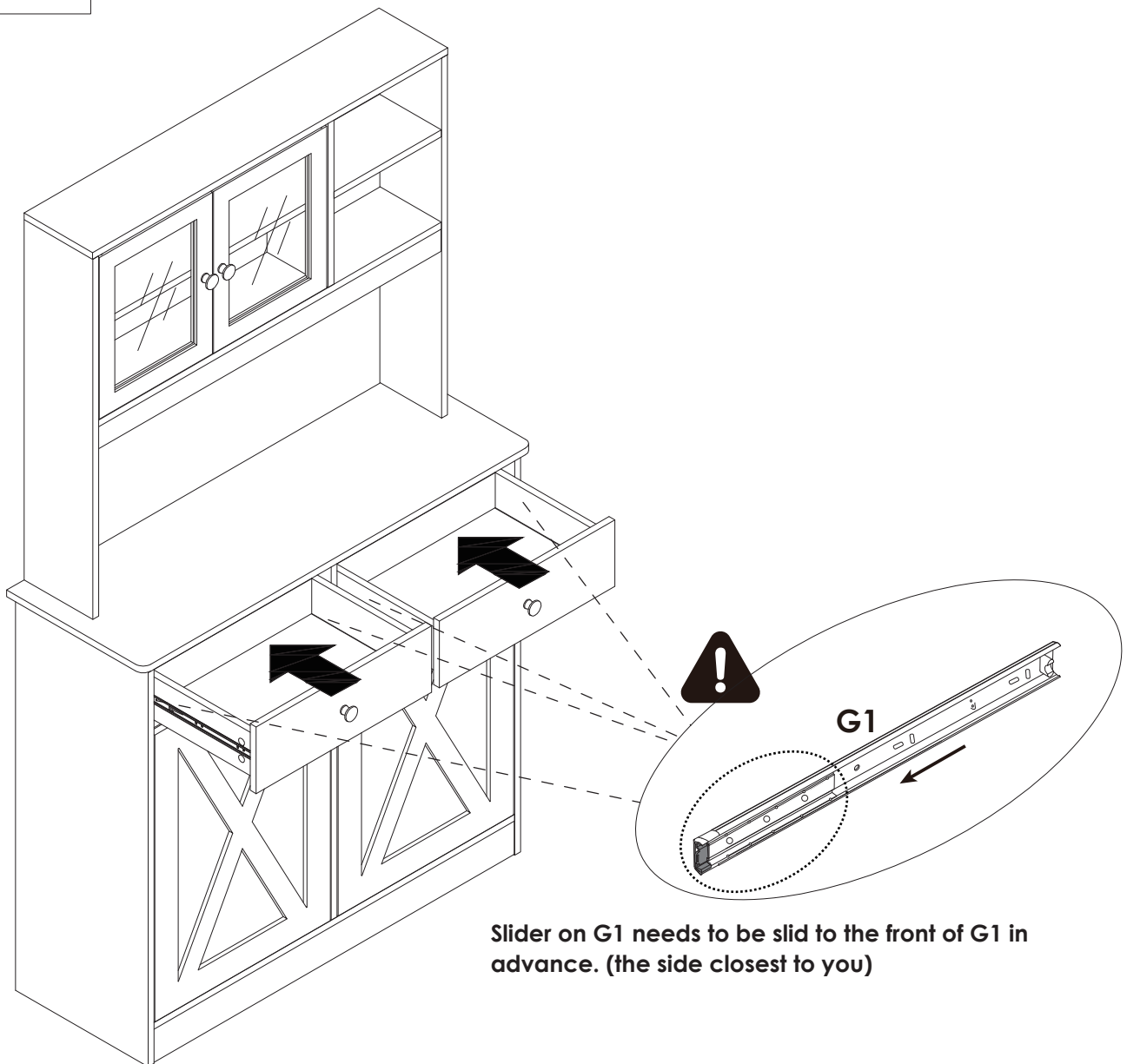


1. Drawers must be horizontally put into the cabinet.

2. Make sure both side sliders match well to avoid damage.

Wrong: G1 and G2 are not be horizontally placed and pushed.

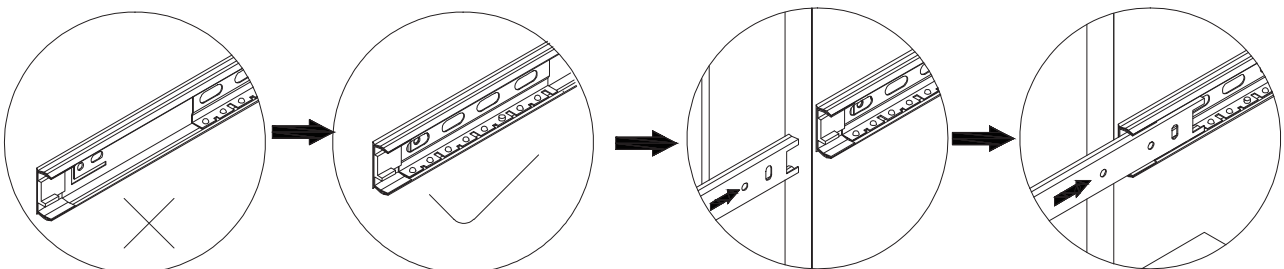
Right: Push G1 and G2 horizontally until you hear a "click".



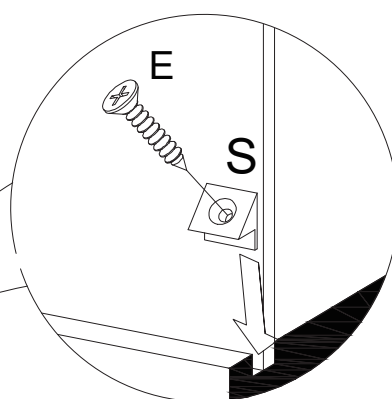
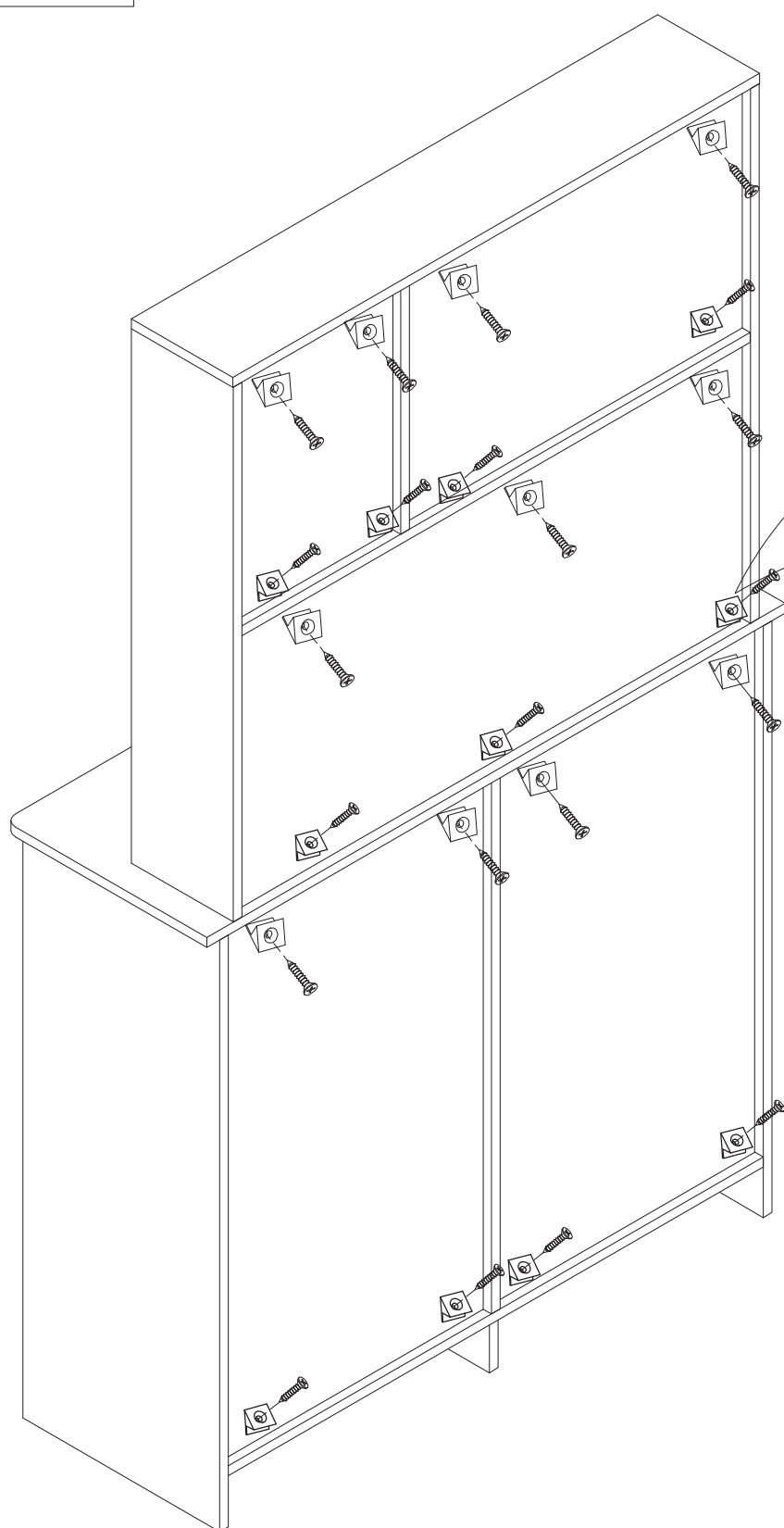
NOTE: If drawer cannot be installed smoothly, please use your fingers to press long plastic picks on G2 on both sides of drawer to completely remove drawer. Then check whether the sliders on G1 have been pre-slided to front end. Keep it level and slide drawer back in until you hear a "click".



NOTE: Please do not push or pull violently to avoid damaging the slide rails and drawer.



31



Ø3×14mm



E x

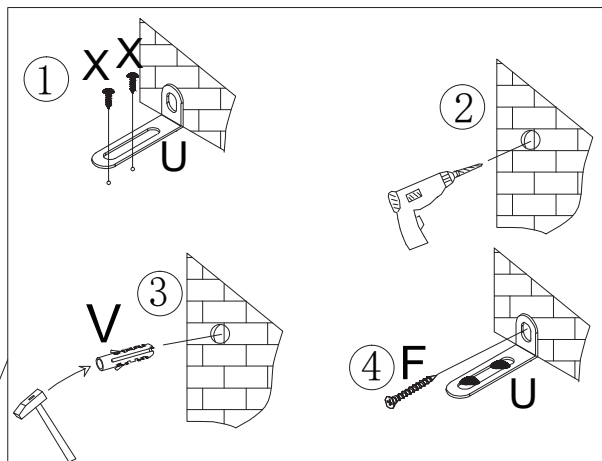
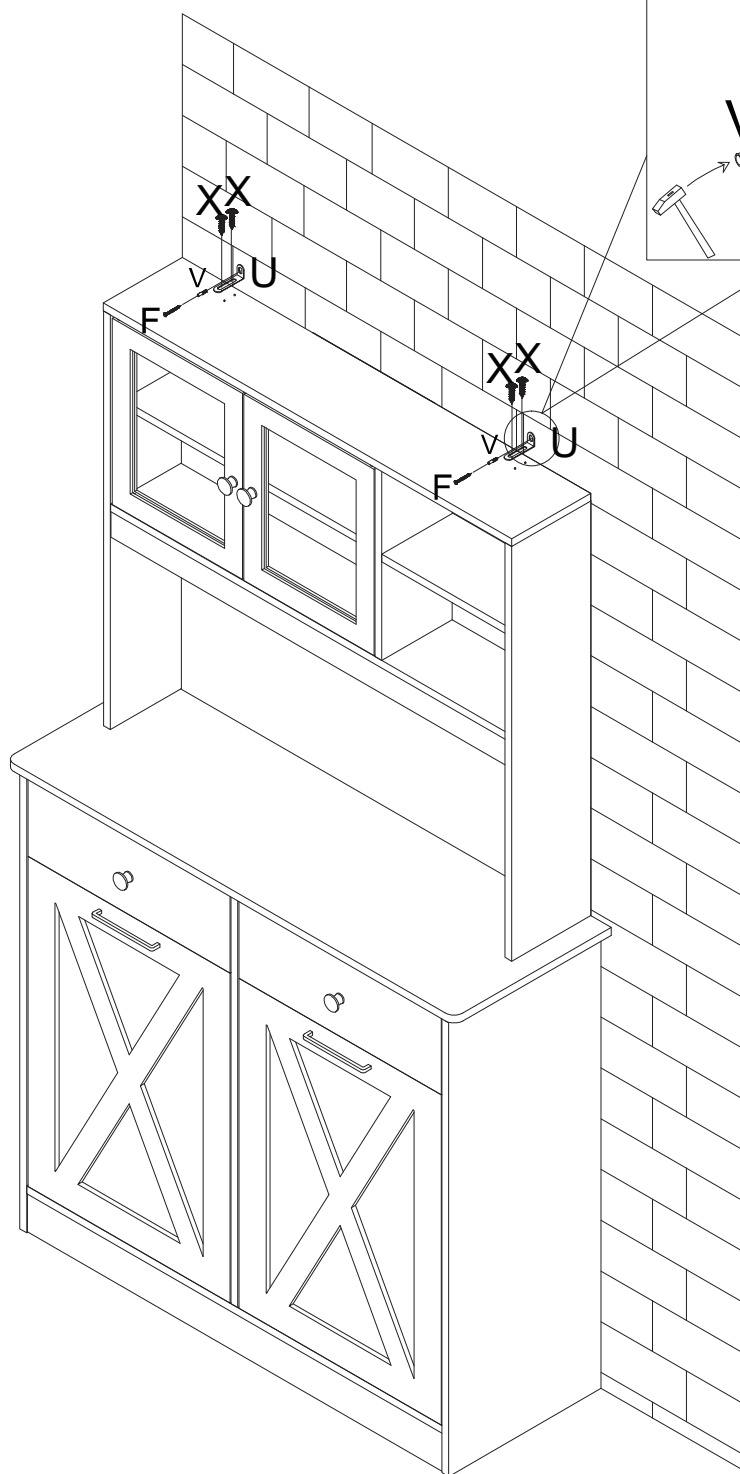
22



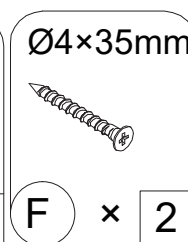
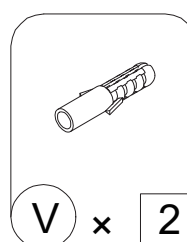
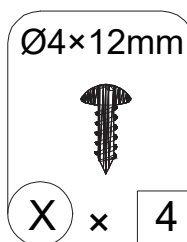
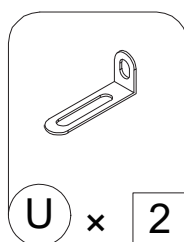
S x

22

32



Note: Please first determine where expansion screw needs to be driven and mark it.



Zhangzhou Xinli Industry and Trade Co., Ltd
Inside Beixing Industrial Park, Shiting Town, Xiangcheng District, Zhangzhou City

Made in China  