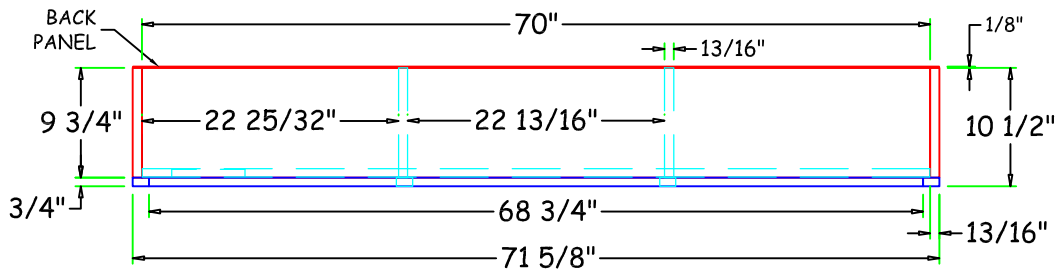
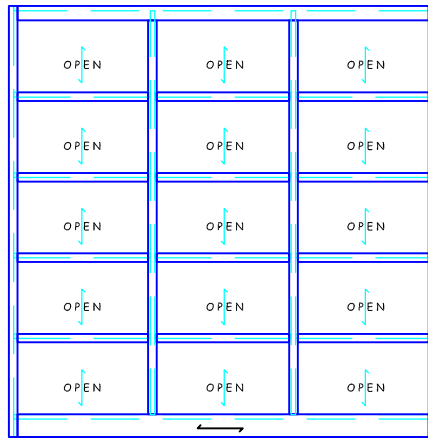
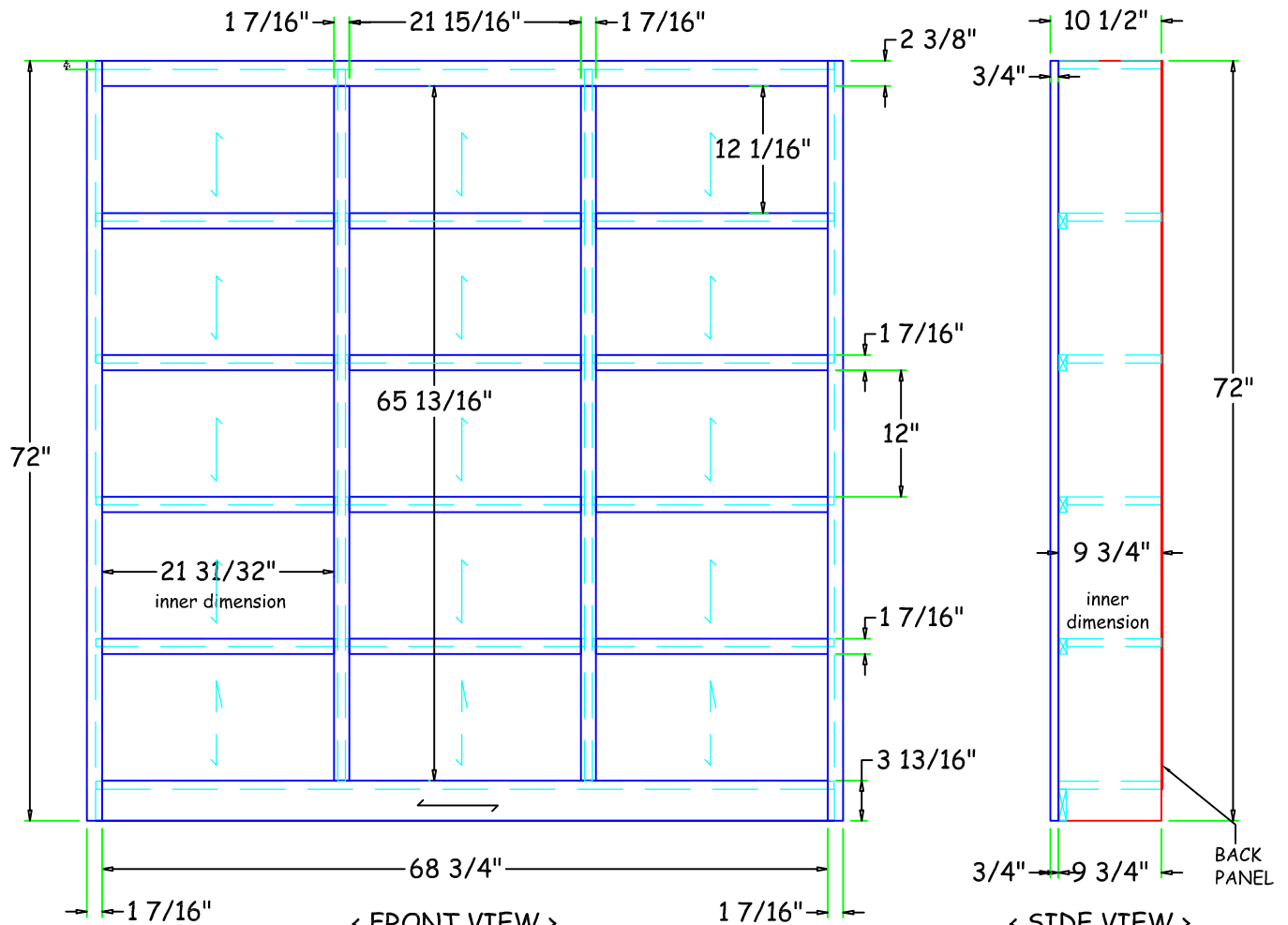


		DESCRIPCION BOOKCASE	MATERIAL MAPLE PB-CORE 1-1	TOTAL PIEZAS -
MEDIDA RUSTICA 72 5/8" w x 10 1/2" w x 72" h	MEDIDA FINAL 72 5/8" w x 10 1/2" w x 72" h	PIEZAS 1		



< PLAN VIEW >



< FRONT VIEW >

< SIDE VIEW >