

# Instruction Manual

**SAVE THESE INSTRUCTIONS**—This manual contains important safety and operating instructions for power units.

<b>Product Name:</b>	Contemporary Cascading Bowls Resin Outdoor Fountain with LED Lights
----------------------	---

Thank you for purchasing this product. This product has been manufactured with the highest standards of safety and quality.

**PLEASE READ ALL INSTRUCTIONS BEFORE ASSEMBLY.**

Unpack all parts from Styrofoam and bubble wrap inside the carton to ensure there are no missing or damaged parts. If any parts are missing or damaged, do not attempt to assemble or use the product.

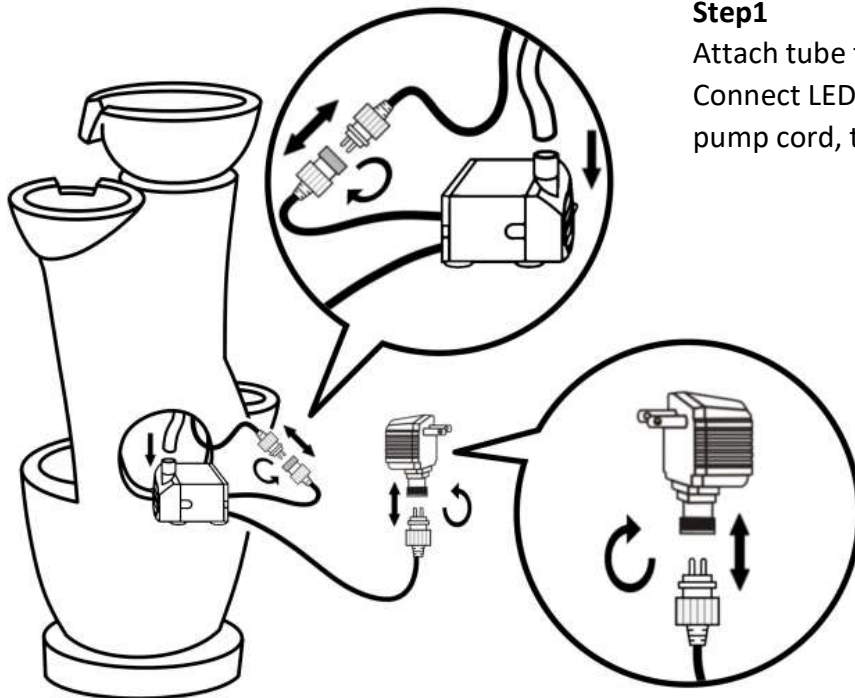
**Carton Contents:**

Description	Quantity
Fountain	1
Pump	1

**Tools required for assembly:** No tools required assembly.

**ASSEMBLY INSTRUCTIONS:**

1. Unpack the contents of the box and check to make sure that all items are accounted for and in good condition.
2. Remove the pump from the package and untie the power cord.
3. Select a flat, level surface for the assembly and final location of your fountain.



**Step1**

Attach tube from fountain body to pump. Connect LED light cord from fountain body with pump cord, then rotate to tighten.

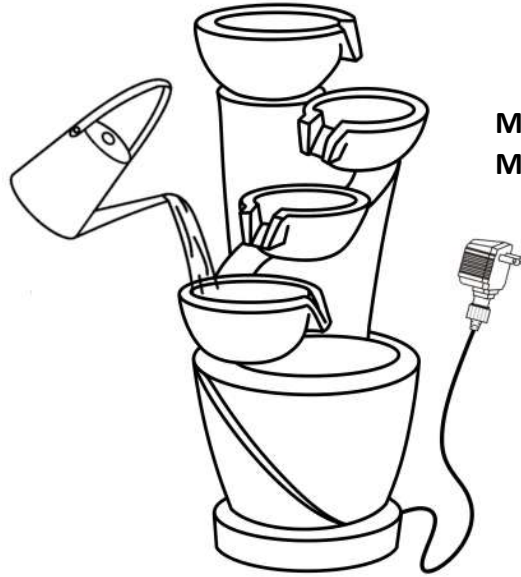
**Step2**

Insert the cord of pump into plug, rotate to tighten. Place the pump upright in the opening of fountain back.

# Instruction Manual

**SAVE THESE INSTRUCTIONS**—This manual contains important safety and operating instructions for power units.

<b>Product Name:</b>	Contemporary Cascading Bowls Resin Outdoor Fountain with LED Lights
----------------------	---



**Min. Water needed: 0.8 Gallon**  
**Max. Water needed: 1.6 Gallon**

### Step3

Add clean water into the reservoir. The water level should be approximately 1.2inch lower than the edge of the reservoir. Ensure the pump in your fountain is completely submerged in the water.



### Step4

For safe operation, connect the pump into a properly Grounded GFCI. If installed properly, water flow in the fountain will begin shortly.

The water flow position of the pump is set by default at the maximum value to help the water flow smoothly, then adjust to your preferred level as needed. (Always disconnect before handling the pump.)

# Instruction Manual

**SAVE THESE INSTRUCTIONS**—This manual contains important safety and operating instructions for power units.

<b>Product Name:</b>	Contemporary Cascading Bowls Resin Outdoor Fountain with LED Lights
----------------------	---

**Note: The above diagram is for illustrative purposes only.**

Please do not use the electrical plug during wet weather conditions.

**Please note:** On first use, there may be air in the pump. It may take several minutes until all the air escapes.

And please:

1. Check the area around your fountain on a regular basis to ensure that there is no leakage.
2. Please refresh the fountain with water each week to ensure it in good condition.
3. Do not add any harmful chemicals to the water as it may alter the finish.

## **MAINTENANCE OF YOUR PUMP:**

- Keep the water clean – clean water will prolong the useful life of your pump.
- Use a pre-filter on your pump if available.
- Regular cleaning of the pump will be necessary depending upon the environment in which it is operated. Clean the pump when it is visibly soiled or when a noticeable drop in performance is detected. **Failure to clean the pump will result in overheating of the pump and the voiding of the warranty!**
- Before cleaning, always disconnect the pump from the power source.
- Disassemble the pump by removing the inlet screen & the impeller housing. Remove the impeller/rotor assembly by gently pulling on the impeller blades. Use a soft cloth or brush to clean the area inside of the pump where the impeller/rotor assembly was. Clean the inlet screen, impeller housing & impeller in warm soapy water. Reassemble the pump and inspect for proper operation.

## **MAINTENANCE OF YOUR FOUNTAIN:**

- Unplug the pump from electric power before servicing, cleaning, or moving.
- Keep water clean - using clean water will reduce mineral deposits and improve water clarity.
- Clean the fountain periodically to prevent mineral deposits and contamination. Use warm soapy water and a stiff brush for heavily stained surfaces. **Do not use harsh chemicals as this will damage the finished surface and void the warranty.**
- Add clean water periodically to ensure that the pump is fully submersed in water.
- Disconnect the power and empty the basin if the fountain will not be used for an extended time.
- If installed outdoors and in a freeze-area of the country, ensure that all water is removed, and the unit is completely dry. **This product is NOT to be operated below 41°F (5°C) freeze damage may occur.**



## **Special Warnings and Cautions:**

### **CAUTION:**

- The pump has been evaluated for use with water only.
- Do not use the pump in water exceeding 35°C / 95°F.
- Do not use the pump in flammable liquids.
- Do not use the pump for industrial purposes.
- Do not use the pump in vehicles or on ships or aircraft or swimming pools.

# Instruction Manual

**SAVE THESE INSTRUCTIONS**—This manual contains important safety and operating instructions for power units.

<b>Product Name:</b>	Contemporary Cascading Bowls Resin Outdoor Fountain with LED Lights
----------------------	---

- Do not use the pump in location where special conditions prevail, such as the presence of a corrosive or explosive atmosphere (dust, vapor, or gas).
- Do not let the pump run dry. Pump must be completely submerged for proper operation and cooling.
- Do not lift the pump by its power cord.
- Keep the plug dry. Do not expose the plug to water or steam.
- Before connecting to the power source, make sure that the pump is assembled and completely submerged in water.
- Check the water level regularly to ensure the pump is completely submerged during operation. The pump should be fully submerged during operation. Do not add water while operating the product. Always disconnect the pump from the power source before adding water.

## **WARNINGS:**

- To reduce the risk of electric shock, connect only to a properly grounded, grounding type receptacle.
- To reduce the risk of electric shock, use only on portable self-contained fountains no larger than 5 feet in any dimension.
- Do not exceed the voltage shown on the pump.
- Always disconnect the pump from the power source prior to beginning any maintenance or work on the pump or fountain.
- Inspect the power cord for damage before installation and/or maintenance. Replace the entire pump if damage is found.
- For pumps with a 3-prong, grounded type plug, do not remove the grounding pin from the plug on the power cord.

## **TIPS AND TROUBLESHOOTING:**

1. Ensure that the pump's flow control switch is set to maximum (+) before operating. Once the flow is established, the pump can be adjusted downward to the desired level.
2. If the pump operates, but there is no flow, check to ensure the pump is fully submerged.
3. If the pump operates, but there is no flow, check the supply tubing for kinks and correct.
4. If the pump operates, but there is no flow, and if the pump is submerged and there are no kinks in the supply tubing, lift the pump from the water. Remove supply tubing at pump outlet and clean tubing inside and out if necessary. Reset pump in water (outlet side up) and once water begins to flow, re-attach the supply tubing.