

**PATRICK  
66-1/2" ACRYLIC  
OVAL TUB**

Cat. No.  
ATOVN67EIG-XX



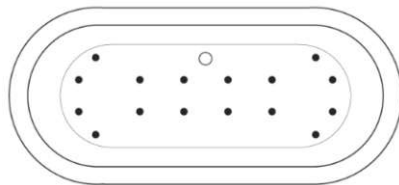
L: 66-1/2"  
W: 31-1/2"  
H: 23-3/4"

Water depth: 18-1/2" to top of tub  
Water depth: 15-1/2" to overflow  
Overflow hole diameter: 3-3/4"  
Center drain to back of rim: 16"  
Bathing well: 45-1/2" x 20"

**The following is recommended for  
ATOVN67E tubs without faucet holes:**

- Freestanding Filler: part #7932, 7952, or 7918  
(Does not need bath supplies)

**For easier installation we  
recommend use of 5598-ITD  
Easy Install Rough In Kit**



(Air jet configuration if system is added,  
more info on page 2.)

Gallon Capacity: 71  
Shipping Weight: 142 lbs.  
Empty Weight: 82 lbs.  
Filled Weight: 675 lbs.

**Features:**

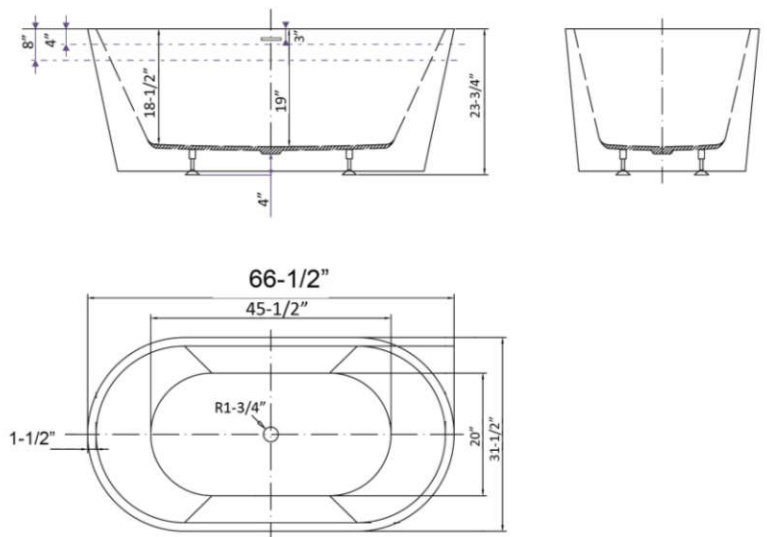
- ▶ Acrylic construction for lighter weight
- ▶ Interior and exterior walls acrylic sheets
- ▶ Overflow slot with integrated drain
- ▶ Drain included
- ▶ Drain and overflow covers included( available in 7 finishes)
- ▶ Rim is 1-3/8" wide
- ▶ IAPMO certified
- ▶ No faucet holes
- ▶ Includes built-in adjusters
- ▶ Tub is thoroughly inspected before shipment
- ▶ Option to add foam insulation between tub walls available
- ▶ **New: Air jet system now available, more info on page 2**



**Finishes:**

- BN** Brushed Nickel
- CP** Polished Chrome
- ORB** Oil Rubbed Bronze
- PB** Polished Brass
- PN** Polished Nickel
- WT** White
- MB** Matte Black

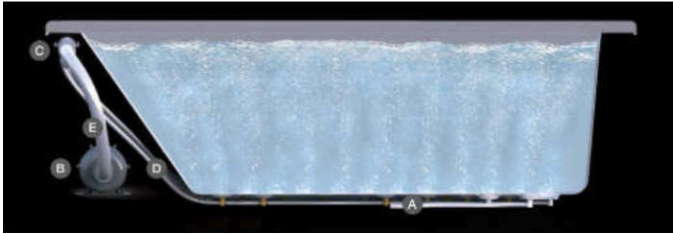
**Custom Colors Available** (inside of tub is always white enamel):  
Painted bathtubs are considered "special order" and are not returnable  
\$160 Bisque or Black \$250 Designer Color



Dimensions of fixture are nominal and specifications subject to change without notice.

# BATHTUB AIR JET KIT

Cat. No.  
AIR KIT 1, AIR KIT 2



- A** AIR JET - Bottom air jets for maximum bubble action.
- B** BLOWER - The heart of the massage system.
- C** MANIFOLD - Double back flow security prevention device.
- D** FLEXIBLE PVC HOSING - IAPMO certified.
- E** MAIN AIR INTAKE HOSE - High temperature and pressure resistant.

## Features:

- ▶ Cord for remote receiver module is 68"
- ▶ Electrical cord for blower is 34"
- ▶ Blower 12-1/2" x 7"
- ▶ 750 Watt blower motor operates system
- ▶ 300 Watt air heater warms air
- ▶ System powered by 120V
- ▶ 16 brass air jets placed in bottom of tub
- ▶ Each air jet has 24 holes
- ▶ Air jet caps available in white (AIR KIT 1) or black (AIR KIT 2)
- ▶ Includes 1 1/2" OD x 3' main air hose plus 1 1/2" OD x 9' extension hose
- ▶ Automatic system purge after each use
- ▶ Automatic safety timer turns off system after 20 minutes
- ▶ Includes water tight remote control
- ▶ Compatible with most acrylic, copper and resin tubs with no feet
- ▶ Not available with cast iron tubs or tubs with feet
- ▶ Connector is smooth with clamps

**Air Kit is installed in tub before shipment**

## INSIDE TUB VIEW - WILL VARY BY TUB DESIGN



Air Jet

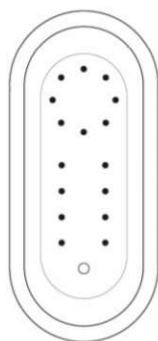


Remote

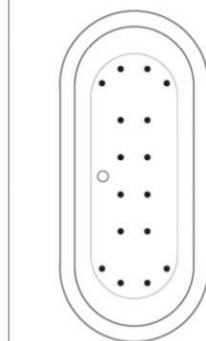


Blower

**Oval bathtub**  
Sample jet configuration

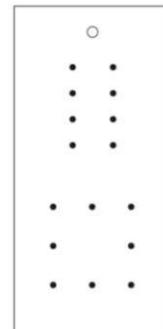


with end drain

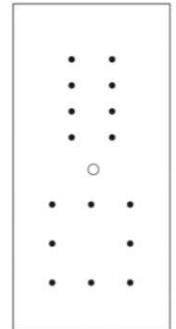


with center drain

**Rectangular bathtub**  
Sample jet configuration

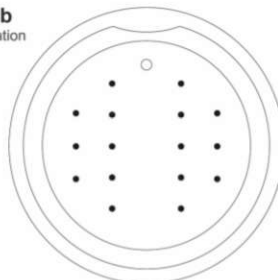


with end drain



with center drain

**Round bathtub**  
Sample jet configuration



These diagrams are general representations. Jet placement may vary dependent on tub shape

### Features:

(16) Maxi Air Jets



Elbows for air jets



Tees for air jets