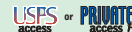


# Postal Specialties



3302

## OUTDOOR PARCEL LOCKERS (OPL's)



Made of heavy duty aluminum, 3300 series U.S.P.S. approved front loading outdoor parcel lockers (OPL's) have two (2) 12" W x 19-3/4" H x 15" D compartments and include a 14-1/2" high matching pedestal. Pedestal mounting kits are available - see below. As a compliment to an existing mailbox system, outdoor parcel lockers offer tenants a convenient way to receive packages on site and are fit with a two (2) key security system. Units feature a durable powder coated finish available in six (6) contemporary colors. For matching Cluster Box Units and Regency® Decorative Cluster Box Units, see pages 6-11.

### 3302 Outdoor Parcel Locker

- 16" W x 62-3/4" H x 18" D
- 85 lbs.
- \$975.00



### Specify



sandstone



bronze



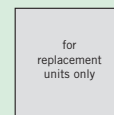
green



black



white



gray

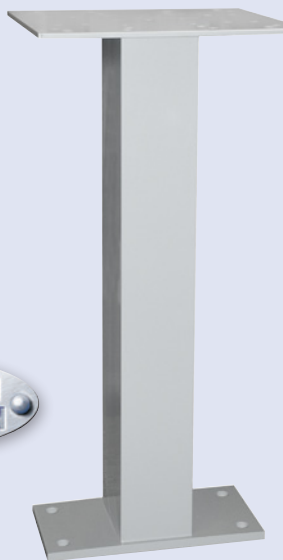
- Specify
- For U.S.P.S. access
  - For private access - order master commercial lock #3375 \$25.00 - for access door and parcel locker

## UNIVERSAL PEDESTALS

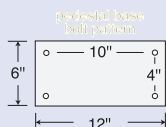
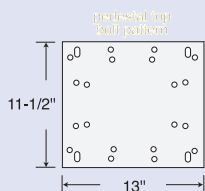
Made entirely of aluminum, Salsbury universal pedestals feature a durable powder coated aluminum finish and can be used as a replacement pedestal for the Neighborhood Delivery and Collection Box Unit (NDCBU) and many other applications. Pedestal mounting kits are available - see right.

### 3285 Universal Pedestal

- 4" W x 28-1/2" H x 5-1/2" D"
- top: 13" W x 11-1/2" D
- base: 12" W x 6" D
- 20 lbs.
- \$125.00



3285

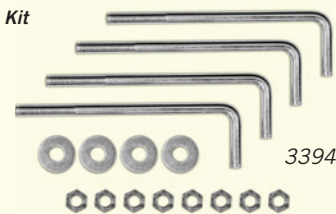


## PEDESTAL MOUNTING KIT

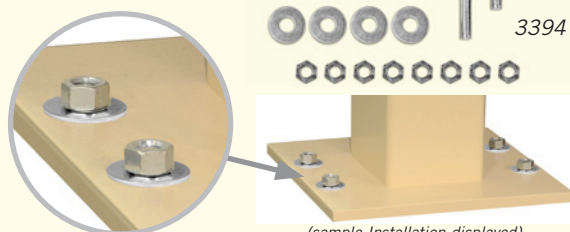
Made of heavy duty zinc plated steel, Salsbury pedestal mounting kits are ideal for pedestal mounted installations in new concrete. Each pedestal mounting kit includes four (4) 1/2" x 12" anchor (j) bolts, washers and nuts. The pedestal mounting kit can be used for all Salsbury commercial bolt mounted posts and pedestals including CBU's, Regency CBU's, 4C Pedestal Mailboxes, Pedestal Collection Boxes, Pedestal Drop Boxes, Mail Chests, Mail Package Drops, OPL's and Universal Pedestals. Pedestal mounting kits can also be used for all Salsbury residential bolt mounted posts and pedestals.

### 3394 Pedestal Mounting Kit

- 3 lbs.
- \$25.00



3394



(sample installation displayed)

## PARCEL DROPS

Made of heavy duty 1/4" thick aluminum plate and 20 gauge sheet aluminum, Salsbury recessed mounted parcel drops feature a front access door for the delivery of packages and parcels. Parcel drops also feature a durable powder coated finish available in three (3) contemporary colors and are suitable for books, videos, e-commerce and many other applications. Custom engraving (#4966 - specify regular or black filled) is available as an option upon request.



#4955 with custom engraving - regular (#4966 - \$20.00) displayed

### 4955 Parcel Drop

- 21" W x 16-1/2" H x 8-1/2" D
- drop opening: 12-1/4" W x 6" H
- rough opening: 14-1/2" W x 13-5/8" H
- 25 lbs.
- \$250.00

- Specify
- aluminum
  - brass
  - bronze



## KEY CABINETS

Made of 20 gauge steel, Salsbury key cabinets are ideal for organizing and securing up to (200) keys. Key cabinets feature a full length piano hinge for smooth operation, a durable powder coated beige finish and a lock with two (2) keys.



1010

### 1010 Key Cabinet

- 13-1/4" W x 30-1/2" H x 1-3/4" D
- 25 lbs.
- \$100.00

## KEY KEEPERS



Made of 20 gauge steel, Salsbury key keepers are available as surface mounted or recessed mounted units and feature a durable powder coated finish. A key keeper allows the U.S.P.S. or other individuals to access a key and deliver the mail and is useful when restricted access to a building or mailroom is required.



1080

### 1080 Key Keeper - surface mounted

- 6" W x 3-1/4" H x 2" D
- 2 lbs.
- \$40.00



1090

### 1090 Key Keeper - recessed mounted

- 6" W x 3-1/4" H x 2" D
- rough opening: 5" W x 2-1/2" H x 1-3/4" D
- 2 lbs.
- \$40.00

- Specify
- aluminum
  - brass

- Specify
- For U.S.P.S. access
  - For private access (order commercial lock #1095 - \$25.00)

## MAILBOX BANKS

Handcrafted of solid oak, mailbox banks include a 3-1/2" W x 5" H brass door, a lock with two (2) keys, a clear 1/4" thick glass window and a name plate.

### 1030 Mailbox Bank

- 5-3/4" W x 6-1/2" H x 5" D
- 3 lbs.
- \$50.00



1030

## KEY LOCKERS

Made of zinc and aluminum alloy, Salsbury key lockers are powder coated black and provide convenient access to stored keys. A combination of four (4) numbers can be easily set and changed by the owner. Key lockers are available as surface mounted (#1075) and shackle style (#1076) units and include a sliding plastic shutter to protect the combination dials. Shackle style key lockers also include a black protective coating. Surface mounted key lockers easily mount to walls or other flat surfaces with four (4) screws (included) and shackle style key lockers can be hung from door handles or other suitable locations. Key lockers are ideal for quick and easy access to businesses and homes by children, friends, associates, realtors and emergency personnel.



1075

### 1075 Key Locker

- surface mounted
- 3" W x 4-1/2" H x 1-1/2" D
- 2 lbs.
- \$50.00



1076

### 1076 Key Locker

- shackle style
- 3" W x 6" H x 1-1/2" D
- 2 lbs.
- \$50.00

## LABEL HOLDERS

Made of heavy duty plastic, transparent self-adhesive label holders neatly organize and identify mailbox compartments. White cardboard inserts are included.

### 1070 Label Holders

- 3" W x 3/8" H
- bag of (50)
- \$30.00

**BOX 123**

1070